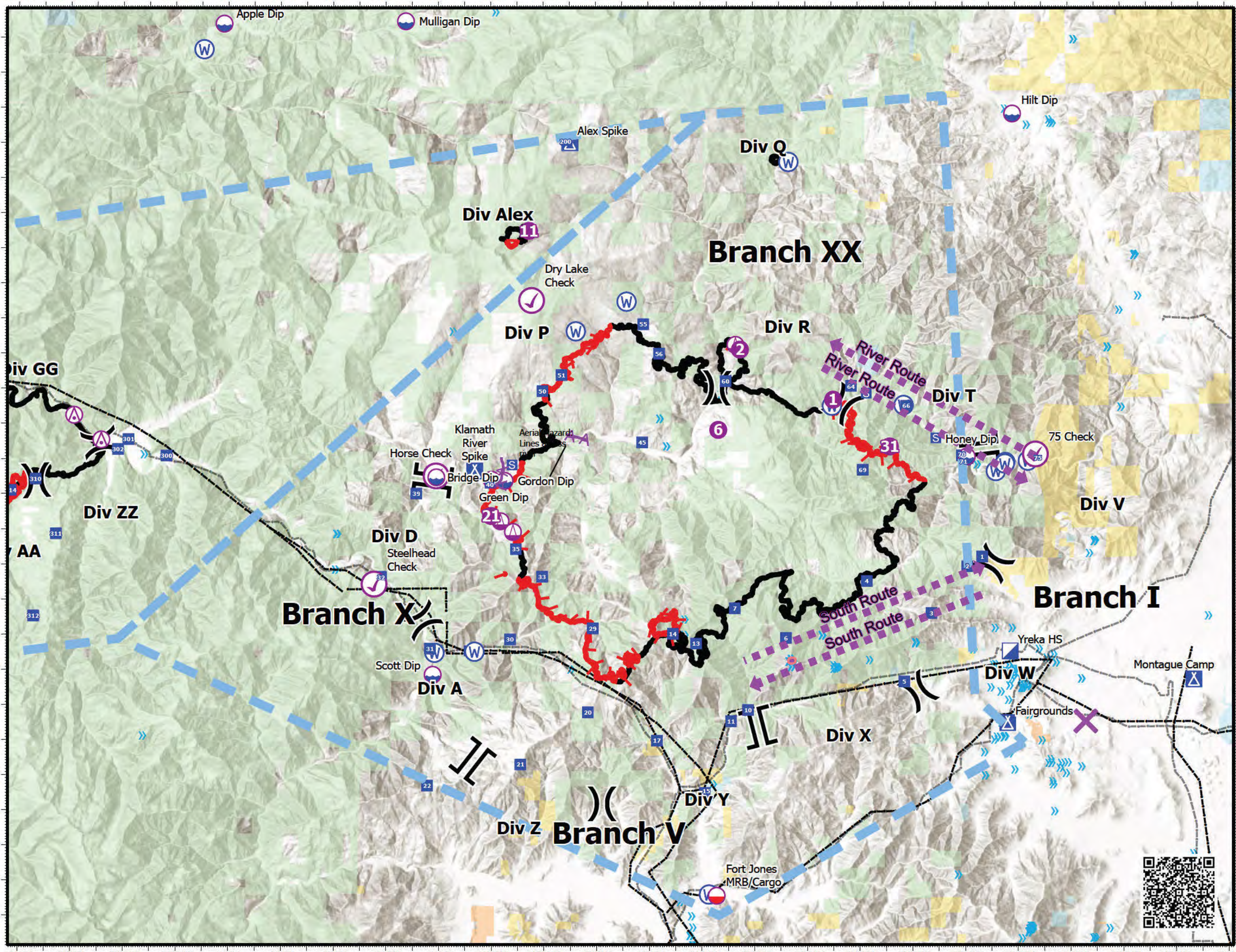


# Pilot Map McKinney Fire CA-KNF-006177

August 10, 2022  
60,389 acres at 8/8/22 at 21:28



- ⊕ Aerial Hazard
- ⊕ Aviation Check Point
- ⊕ Dip Site
- ⊕ Mobile Retardant Base
- ⊕ Helispot
- ⊕ Sling Site
- ) ( Division Break
- || Branch Break
- ⊕ Incident Command Post
- ⊕ Drop Point
- ⊕ Camp
- ⊕ Staging Area
- ⊕ Water Source
- ⊕ Intersection Points
- ⊕ Aerial Hazard
- ⊕ Retardant Drop
- ⊕ Aviation Route
- ⊕ Temporary Flight Restriction
- ⊕ Contained
- ⊕ Uncontained
- ⊕ Powerline
- ⊕ Bridge/Ovepass/Viaduct
- ⊕ Military Training Route
- ⊕ Telephone Line/Telegraph Line
- ⊕ Power Transmission Line
- ⊕ Power Transmission Line
- ⊕ Tower
- ⊕ Bureau of Indian Affairs (BIA)
- ⊕ Bureau of Land Management (BLM)
- ⊕ State
- ⊕ US Forest Service (USFS)

Kilometers  
0 2.5 5

Miles  
0 2.5 5

1:185,000  
Datum: North American 1983



IncidentName	FeatureCategory	Label	LatWGS84_DDM	LongWGS84_DDM
ALEX	Helispot	11	+41° 56.49531285'	-122° 56.54883201'
MCKINNEY	Aviation Check Point	75 Check	41° 50.108' N	122° 37.272' W
MCKINNEY	Aviation Check Point	Steelhead Check	41° 46.440' N	123° 02.451' W
MCKINNEY	Aviation Check Point	Horse Check	41° 49.520' N	123° 00.091' W
MCKINNEY	Aviation Check Point	Dry Lake Check	41° 54.514' N	122° 56.451' W
MCKINNEY	Dip Site	Scott Dip	41° 43.860' N	123° 00.221' W
MCKINNEY	Dip Site	Hilt Dip	41° 59.802' N	122° 38.106' W
MCKINNEY	Dip Site	Mulligan Dip	42° 02.460' N	123° 01.241' W
MCKINNEY	Dip Site	Apple Dip	42° 02.390' N	123° 08.171' W
MCKINNEY	Dip Site	Green Dip	41° 49.410' N	122° 57.981' W
MCKINNEY	Dip Site	Bridge Dip	41° 49.480' N	123° 00.081' W
MCKINNEY	Dip Site	Gordon Dip	41° 49.380' N	122° 57.481' W
MCKINNEY	Dip Site	Honey Dip	41° 50.044' N	122° 39.885' W
MCKINNEY	Helispot	1	41° 51.673' N	122° 44.966' W
MCKINNEY	Helispot	2	41° 53.107' N	122° 48.513' W
MCKINNEY	Helispot	21	41° 48.380' N	122° 58.002' W
MCKINNEY	Helispot	31	41° 50.338' N	122° 42.816' W
MCKINNEY	Helispot	6	41° 50.82200002' N	122° 49.34500000' W
MCKINNEY	Mobile Retardant Base	Fort Jones MRB/Cargo	41° 37.560' N	122° 49.441' W
YETI	Aerial Hazard		+41° 50.54700002'	-123° 12.83600000'
YETI	Aerial Hazard		+41° 51.24799997'	-123° 13.87200002'
YETI	Helispot	1	+41° 51.70390256'	-123° 18.50811515'