

Point Type	Label	Lat WGS84	Long WGS84
Helispot	1	41° 51.704'	-123° 18.508'
Helispot	11	41° 56.495'	-122° 56.548'
Aerial Hazard		41° 50.547'	-123° 12.836'
Aerial Hazard		41° 51.248'	-123° 13.872'
Helibase		41° 47.445'	-123° 23.267'

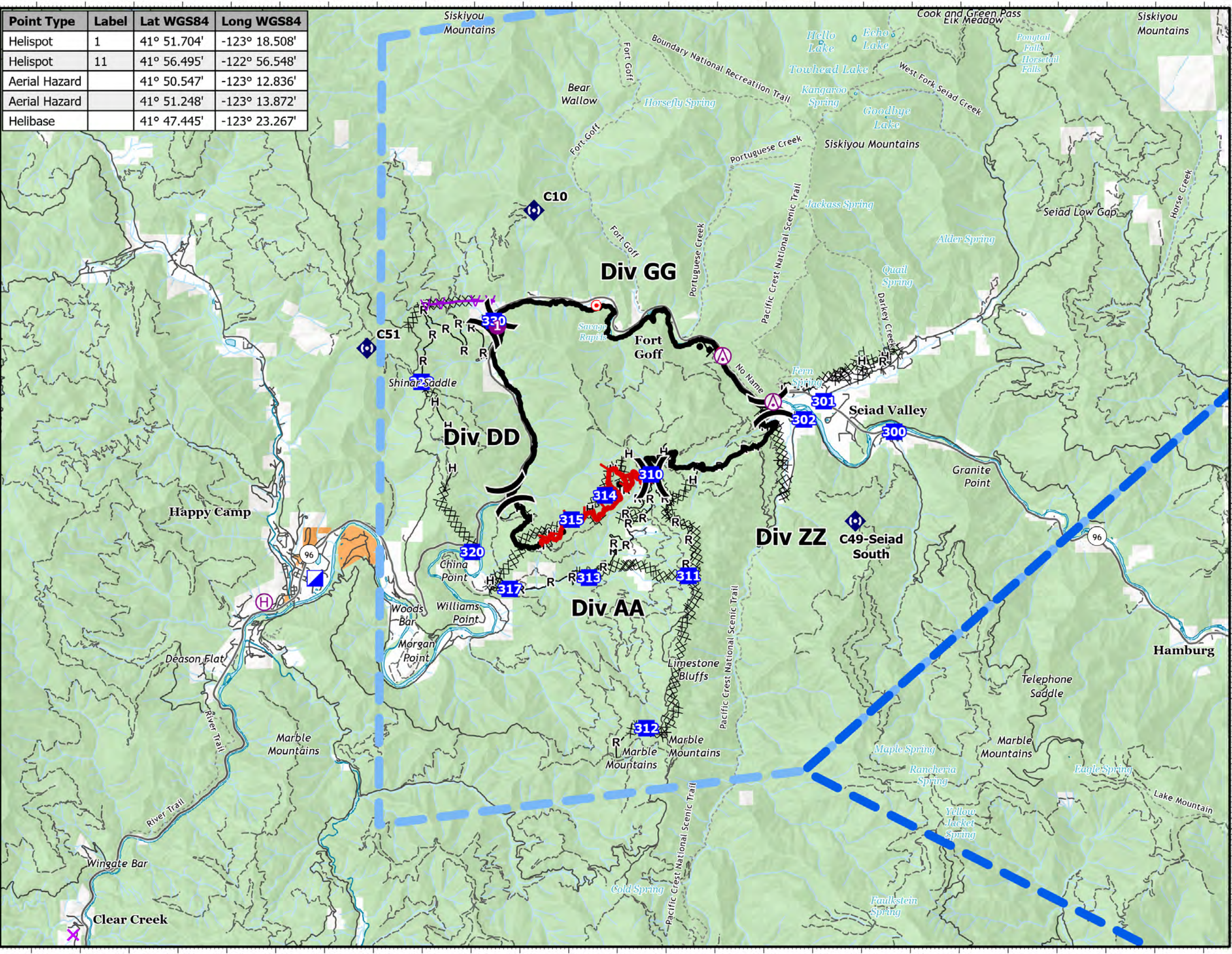
Pilot Map

Yeti Fire

CA-KNF-006200

August 11, 2022

7,886 acres on 8/10 at 20:53

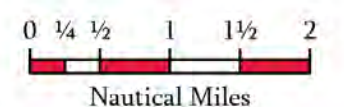
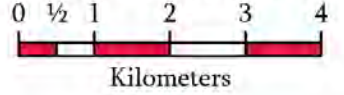


- Intersection Points
- TFR: 2/4959
- TFR: 2/4960
- Aerial Hazard
- Helispot
- Helibase
- Division Break
- Incident Command Post
- Drop Point
- Hot Spot - Spot Fire
- Repeater
- Contained
- Uncontained
- Completed Burnout
- Completed Dozer Line
- Completed Hand Line
- Completed Road as Line
- Aerial Hazard

Surface Management by Agency

Bureau of Indian Affairs (BIA)

US Forest Service (USFS)



1:100,000

Datum: North American 1983

