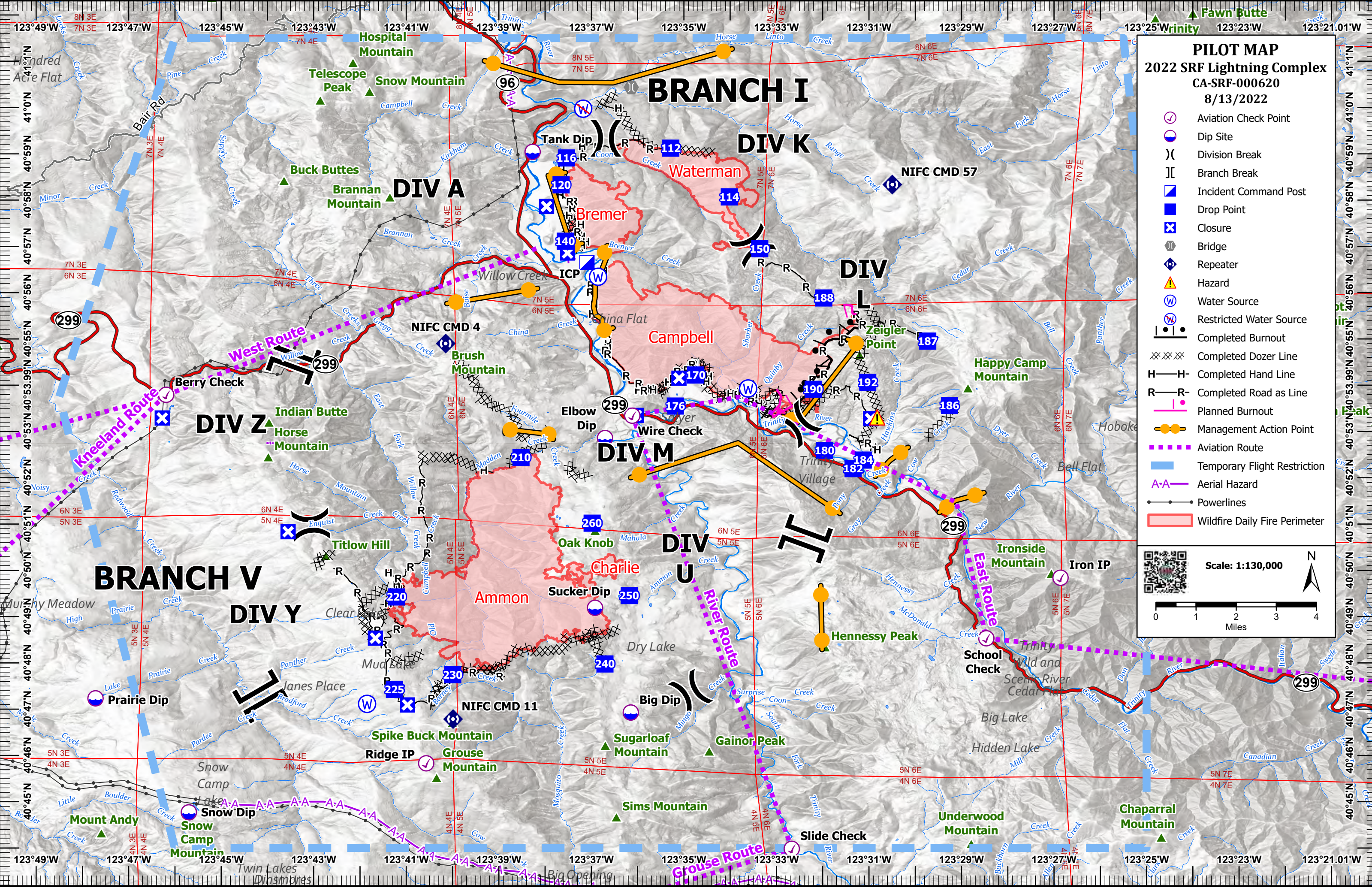


**PILOT MAP**  
**2022 SRF Lightning Complex**  
**CA-SRF-000620**  
**8/13/2022**

- Aviation Check Point
- Dip Site
- Division Break
- Branch Break
- Incident Command Post
- Drop Point
- Closure
- Bridge
- Repeater
- Hazard
- Water Source
- Restricted Water Source
- Completed Burnout
- Completed Dozer Line
- Completed Hand Line
- Completed Road as Line
- Planned Burnout
- Management Action Point
- Aviation Route
- Temporary Flight Restriction
- Aerial Hazard
- Powerlines
- Wildfire Daily Fire Perimeter

Scale: 1:130,000





| Point Type     | Name         | LAT WGS84     | LONG WGS84     |
|----------------|--------------|---------------|----------------|
| Aviation Check | Berry Check  | 40° 53.793' N | 123° 46.190' W |
| Aviation Check | Grassy IP    | 40° 41.700' N | 123° 45.200' W |
| Aviation Check | Iron IP      | 40° 49.840' N | 123° 26.860' W |
| Aviation Check | Ridge IP     | 40° 45.830' N | 123° 40.570' W |
| Aviation Check | School Check | 40° 48.532' N | 123° 28.464' W |
| Aviation Check | Slide Check  | 40° 43.983' N | 123° 32.669' W |
| Aviation Check | Wire Check   | 40° 53.342' N | 123° 36.115' W |
| Dip Site       | Big Dip      | 40° 46.927' N | 123° 36.148' W |
| Dip Site       | Elbow Dip    | 40° 52.859' N | 123° 36.705' W |
| Dip Site       | Prairie Dip  | 40° 47.234' N | 123° 47.717' W |
| Dip Site       | Snow Dip     | 40° 44.770' N | 123° 45.700' W |
| Dip Site       | Sucker Dip   | 40° 49.190' N | 123° 36.921' W |
| Dip Site       | Tank Dip     | 40° 59.042' N | 123° 38.269' W |
| Drop Point     | 112          | 40° 59.122' N | 123° 35.283' W |
| Drop Point     | 114          | 40° 58.068' N | 123° 34.019' W |
| Drop Point     | 116          | 40° 58.910' N | 123° 37.539' W |
| Drop Point     | 120          | 40° 58.329' N | 123° 37.655' W |
| Drop Point     | 140          | 40° 57.113' N | 123° 37.565' W |
| Drop Point     | 150          | 40° 56.948' N | 123° 33.361' W |
| Drop Point     | 170          | 40° 54.220' N | 123° 34.745' W |

| Point Type | Name        | LAT WGS84     | LONG WGS84     |
|------------|-------------|---------------|----------------|
| Drop Point | 176         | 40° 53.550' N | 123° 35.185' W |
| Drop Point | 180         | 40° 52.589' N | 123° 31.957' W |
| Drop Point | 182         | 40° 52.197' N | 123° 31.344' W |
| Drop Point | 184         | 40° 52.383' N | 123° 31.124' W |
| Drop Point | 186         | 40° 53.562' N | 123° 29.260' W |
| Drop Point | 187         | 40° 54.953' N | 123° 29.730' W |
| Drop Point | 188         | 40° 55.885' N | 123° 31.977' W |
| Drop Point | 190         | 40° 53.911' N | 123° 32.207' W |
| Drop Point | 192         | 40° 54.062' N | 123° 31.027' W |
| Drop Point | 210         | 40° 52.437' N | 123° 38.521' W |
| Drop Point | 220         | 40° 49.425' N | 123° 41.213' W |
| Drop Point | 225         | 40° 47.429' N | 123° 41.256' W |
| Drop Point | 230         | 40° 47.744' N | 123° 39.996' W |
| Drop Point | 240         | 40° 47.977' N | 123° 36.706' W |
| Drop Point | 250         | 40° 49.455' N | 123° 36.181' W |
| Drop Point | 260         | 40° 51.019' N | 123° 36.983' W |
| Incident   | ICP         | 40° 56.653' N | 123° 37.095' W |
| Repeater   | NIFC CMD 11 | 40° 46.786' N | 123° 39.989' W |
| Repeater   | NIFC CMD 4  | 40° 54.901' N | 123° 40.149' W |
| Repeater   | NIFC CMD 57 | 40° 58.336' N | 123° 30.494' W |