

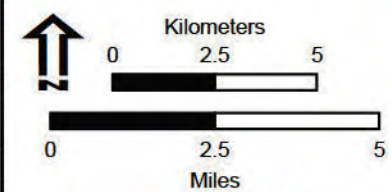
Pilot Map

McKinney Fire

CA-KNF-006177

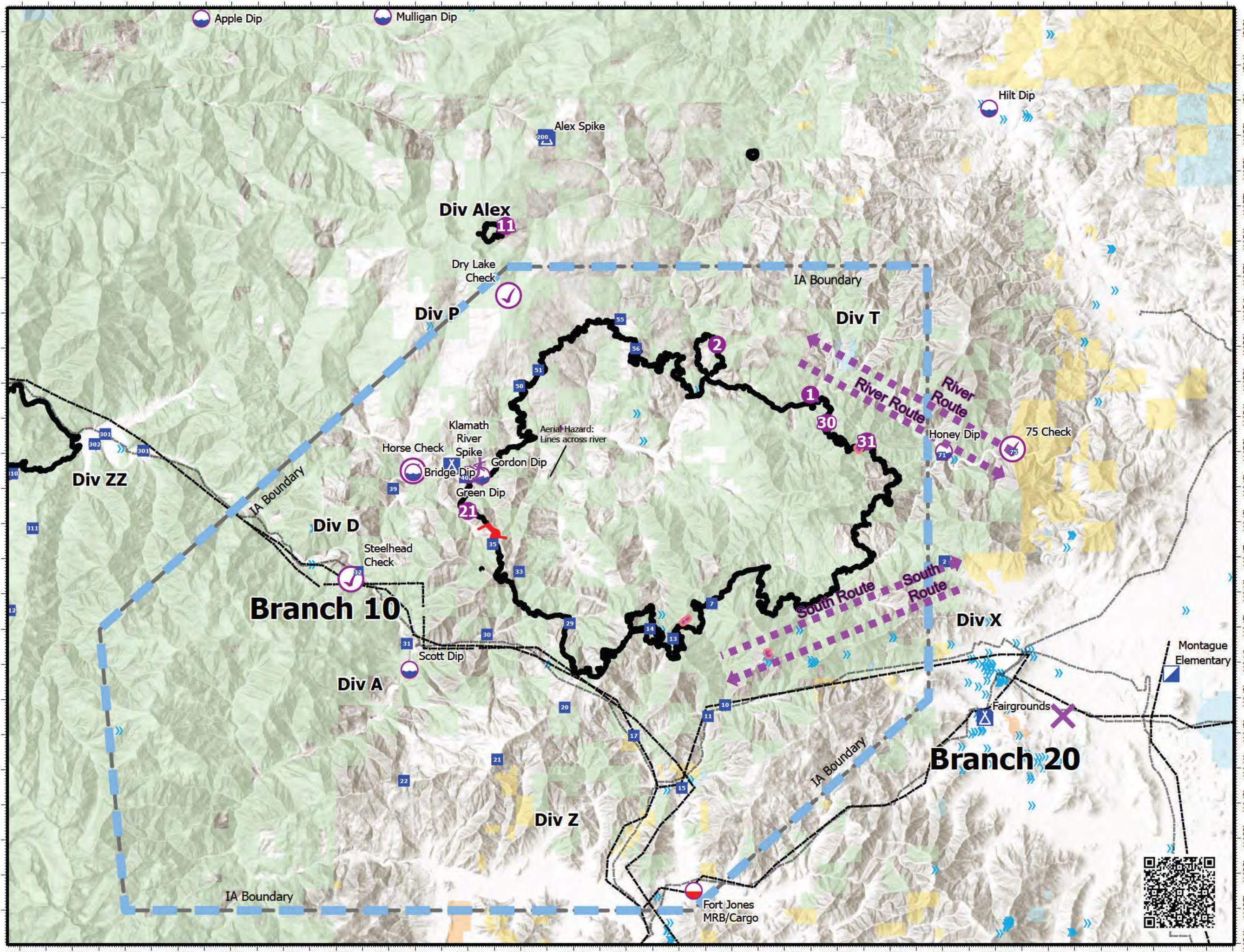
August 23, 2022
60,138 acres at 8/21/22 2205

- Aviation Check Point
- Dip Site
- Mobile Retardant Base
- Helispot
- Incident Command Post
- Drop Point
- Camp
- Intersection Points
- Aerial Hazard
- Retardant Drop
- Aviation Route
- Temporary Flight Restriction
- IA Boundary
- Contained
- Uncontained
- Powerline
- Bridge/Ovepass/Viaduct
- Military Training Route
- Telephone Line/Telegraph Line
- Power Transmission Line
- Power Transmission Line
- Tower
- Bureau of Indian Affairs (BIA)
- Bureau of Land Management (BLM)
- State
- US Forest Service (USFS)



1:185,000
Datum: North American 1983

PILOT



| IncidentName | FeatureCategory | Label | LatWGS84_DDM | LongWGS84_DDM |
|--------------|-----------------------|----------------------|---------------|----------------|
| ALEX | Drop Point | 200 | 41° 59.077' | -122° 55.106' |
| ALEX | Helispot | 11 | 41° 56.495' | -122° 56.548' |
| MCKINNEY | Aviation Check Point | 75 Check | 41° 50.108' N | 122° 37.272' W |
| MCKINNEY | Aviation Check Point | Steelhead Check | 41° 46.440' N | 123° 02.451' W |
| MCKINNEY | Aviation Check Point | Horse Check | 41° 49.520' N | 123° 00.091' W |
| MCKINNEY | Aviation Check Point | Dry Lake Check | 41° 54.514' N | 122° 56.451' W |
| MCKINNEY | Dip Site | Scott Dip | 41° 43.860' N | 123° 00.221' W |
| MCKINNEY | Dip Site | Hilt Dip | 41° 59.802' N | 122° 38.106' W |
| MCKINNEY | Dip Site | Mulligan Dip | 42° 02.460' N | 123° 01.241' W |
| MCKINNEY | Dip Site | Apple Dip | 42° 02.390' N | 123° 08.171' W |
| MCKINNEY | Dip Site | Green Dip | 41° 49.410' N | 122° 57.981' W |
| MCKINNEY | Dip Site | Bridge Dip | 41° 49.480' N | 123° 00.081' W |
| MCKINNEY | Dip Site | Gordon Dip | 41° 49.380' N | 122° 57.481' W |
| MCKINNEY | Dip Site | Honey Dip | 41° 50.044' N | 122° 39.885' W |
| MCKINNEY | Drop Point | 2 | 41° 46.919' N | 122° 39.882' W |
| MCKINNEY | Drop Point | 15 | 41° 40.489' N | 122° 49.887' W |
| MCKINNEY | Drop Point | 11 | 41° 42.528' N | 122° 48.883' W |
| MCKINNEY | Drop Point | 10 | 41° 42.847' N | 122° 48.236' W |
| MCKINNEY | Drop Point | 75 | 41° 50.027' N | 122° 37.231' W |
| MCKINNEY | Drop Point | 20 | 41° 42.789' N | 122° 54.327' W |
| MCKINNEY | Drop Point | 17 | 41° 41.980' N | 122° 51.701' W |
| MCKINNEY | Drop Point | 40 | 41° 49.337' N | 122° 58.120' W |
| MCKINNEY | Drop Point | 35 | 41° 47.435' N | 122° 57.058' W |
| MCKINNEY | Drop Point | 30 | 41° 44.863' N | 122° 57.281' W |
| MCKINNEY | Drop Point | 50 | 41° 51.933' N | 122° 56.039' W |
| MCKINNEY | Drop Point | 55 | 41° 53.833' N | 122° 52.196' W |
| MCKINNEY | Drop Point | 51 | 41° 52.392' N | 122° 55.314' W |
| MCKINNEY | Drop Point | 71 | 41° 49.952' N | 122° 39.950' W |
| MCKINNEY | Drop Point | 56 | 41° 52.997' N | 122° 51.596' W |
| MCKINNEY | Drop Point | 32 | 41° 46.648' N | 123° 02.185' W |
| MCKINNEY | Drop Point | 39 | 41° 49.018' N | 123° 00.843' W |
| MCKINNEY | Drop Point | 31 | 41° 44.605' N | 123° 00.323' W |
| MCKINNEY | Drop Point | 29 | 41° 45.180' N | 122° 54.132' W |
| MCKINNEY | Drop Point | 33 | 41° 46.652' N | 122° 56.058' W |
| MCKINNEY | Drop Point | 14 | 41° 45.020' N | 122° 51.087' W |
| MCKINNEY | Drop Point | 13 | 41° 44.741' N | 122° 50.206' W |
| MCKINNEY | Drop Point | 7 | 41° 45.741' N | 122° 48.731' W |
| MCKINNEY | Drop Point | 21 | 41° 41.306' N | 122° 56.890' W |
| MCKINNEY | Drop Point | 22 | 41° 40.704' N | 123° 00.434' W |
| MCKINNEY | Helispot | 1 | 41° 51.673' N | 122° 44.966' W |
| MCKINNEY | Helispot | 2 | 41° 53.107' N | 122° 48.513' W |
| MCKINNEY | Helispot | 21 | 41° 48.380' N | 122° 58.002' W |
| MCKINNEY | Helispot | 31 | 41° 50.338' N | 122° 42.816' W |
| MCKINNEY | Helispot | 30 | 41° 50.872' N | 122° 44.346' W |
| MCKINNEY | Mobile Retardant Base | Fort Jones MRB/Cargo | 41° 37.560' N | 122° 49.441' W |
| YETI | Drop Point | 301 | 41° 50.560' | -123° 11.800' |
| YETI | Drop Point | 310 | 41° 49.428' | -123° 15.339' |
| YETI | Drop Point | 330 | 41° 51.779' | -123° 18.580' |
| YETI | Drop Point | 314 | 41° 49.104' | -123° 16.285' |
| YETI | Drop Point | 313 | 41° 47.841' | -123° 16.610' |
| YETI | Drop Point | 311 | 41° 47.873' | -123° 14.561' |
| YETI | Drop Point | 301 | 41° 50.094' | -123° 10.354' |
| YETI | Drop Point | 320 | 41° 48.228' | -123° 19.009' |
| YETI | Drop Point | 328 | 41° 50.837' | -123° 20.061' |
| YETI | Drop Point | 315 | 41° 48.729' | -123° 16.972' |
| YETI | Drop Point | 302 | 41° 50.277' | -123° 12.203' |
| YETI | Drop Point | 317 | 41° 47.663' | -123° 18.236' |
| YETI | Drop Point | 312 | 41° 45.531' | -123° 15.415' |
| YETI | Helispot | 1 | 41° 51.704' | -123° 18.509' |