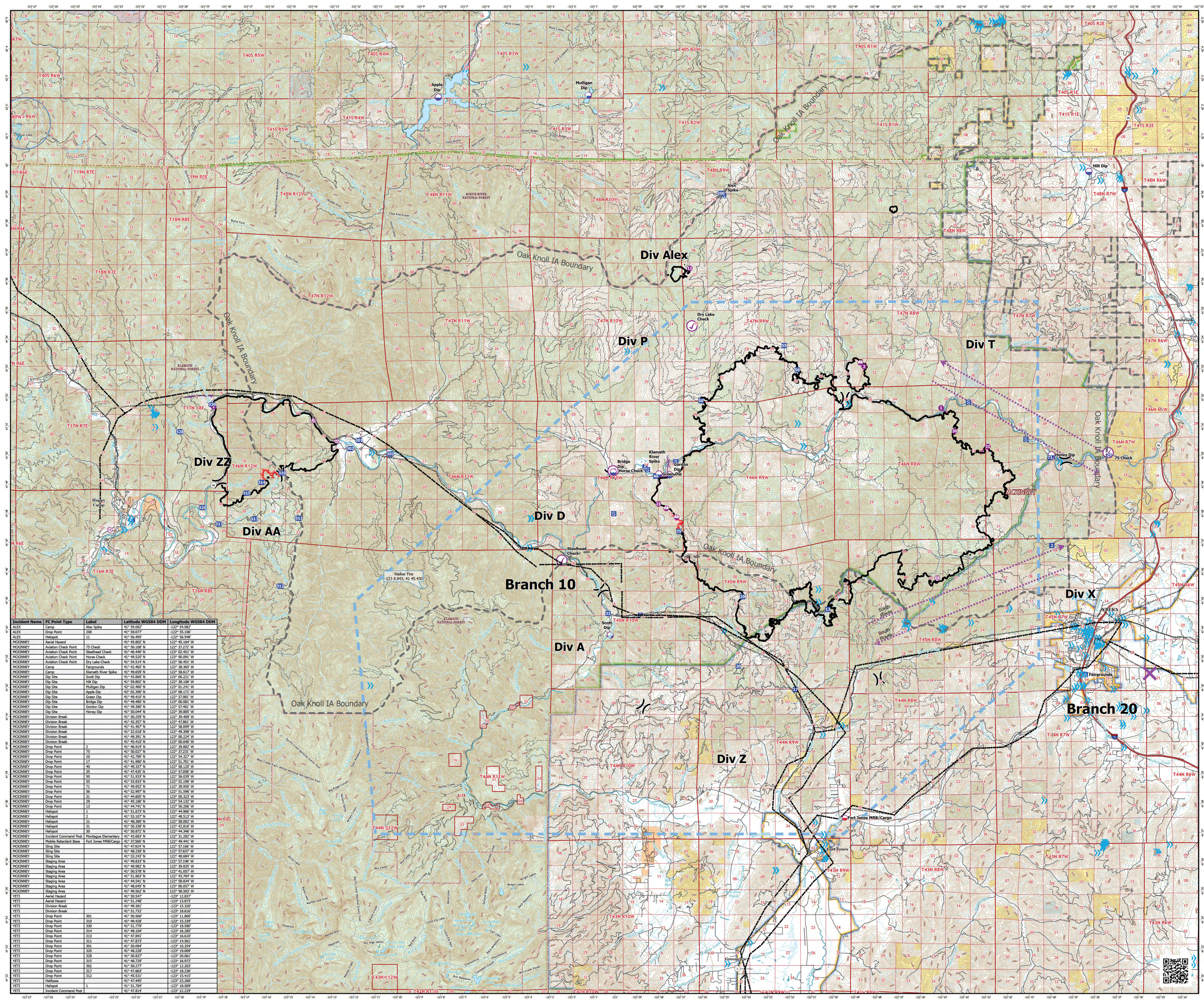


Air Ops McKinney Fire CA-KNF-006177 August 27, 2022

60,138 acres on 8/23/22
2200



- Aerial Hazard
 - Dip Site
 - Aviation Check Point
 - Mobile Retardant Base
 - Helispot
 - Helibase
 - Sling Site
 - Division Break
 - Incident Command Post
 - Drop Point
 - Camp
 - Staging Area
 - Intersection Points
 - Contained
 - Uncontained
 - Aerial Hazard
 - Retardant Drop
 - Aviation Route
 - Temporary Flight Restriction
 - Oak Knoll IA Boundary
- Direct Protection Areas by Agency
- CDF
 - LOCAL
 - USFS
- Surface Management by Agency
- Bureau of Indian Affairs (BIA)
 - Bureau of Land Management (BLM)
 - Department of Defense (DOD)
 - National Park Service (NPS)
 - State
 - US Forest Service (USFS)
- Powerline
- Bridge/Ovepass/Viaduct
 - Military Training Route
 - Telephone Line/Telegraph Line
 - Power Transmission Line
 - Tower

Incident Name	FC Point Type	Label	Latitude WGS84 DDM	Longitude WGS84 DDM
ALEX	Camp	Alex Spike	41° 59.077'	-122° 54.982'
ALEX	Drop Point	200	41° 59.077'	-122° 55.106'
ALEX	Helispot	11	41° 59.099'	-122° 56.598'
MCKINNEY	Aerial Hazard		41° 45.807' N	122° 45.164' W
MCKINNEY	Aviation Check Point	75 Check	41° 50.108' N	122° 57.272' W
MCKINNEY	Aviation Check Point	Shoalhead Check	41° 46.400' N	123° 00.051' W
MCKINNEY	Aviation Check Point	Horse Check	41° 49.520' N	123° 00.051' W
MCKINNEY	Aviation Check Point	Dry Lake Check	41° 54.514' N	122° 56.451' W
MCKINNEY	Camp	Fairgrounds	41° 41.465' N	122° 58.387' W
MCKINNEY	Camp	Klamath River Spike	41° 49.659' N	122° 58.617' W
MCKINNEY	Dip Site	Scott Dip	41° 43.869' N	123° 00.231' W
MCKINNEY	Dip Site	Hill Dip	41° 59.803' N	123° 00.231' W
MCKINNEY	Dip Site	Mulligan Dip	42° 02.460' N	123° 01.241' W
MCKINNEY	Dip Site	Apple Dip	42° 03.390' N	123° 08.171' W
MCKINNEY	Dip Site	Green Dip	41° 47.810' N	123° 07.580' W
MCKINNEY	Dip Site	Bridge Dip	41° 49.480' N	123° 00.051' W
MCKINNEY	Dip Site	Gordon Dip	41° 49.380' N	122° 57.481' W
MCKINNEY	Dip Site	Honey Dip	41° 50.044' N	122° 59.400' W
MCKINNEY	Division Break		41° 50.259' N	122° 39.400' W
MCKINNEY	Division Break		41° 42.357' N	122° 47.861' W
MCKINNEY	Division Break		41° 41.407' N	122° 58.599' W
MCKINNEY	Division Break		41° 52.018' N	122° 49.396' W
MCKINNEY	Division Break		41° 49.391' N	123° 00.224' W
MCKINNEY	Division Break		41° 46.416' N	122° 59.882' W
MCKINNEY	Drop Point	2	41° 46.919' N	122° 39.882' W
MCKINNEY	Drop Point	75	41° 50.027' N	122° 57.231' W
MCKINNEY	Drop Point	25	41° 43.799' N	122° 58.377' W
MCKINNEY	Drop Point	17	41° 41.980' N	122° 51.761' W
MCKINNEY	Drop Point	40	41° 49.377' N	122° 58.120' W
MCKINNEY	Drop Point	28	41° 43.938' N	122° 57.598' W
MCKINNEY	Drop Point	50	41° 51.933' N	122° 56.039' W
MCKINNEY	Drop Point	55	41° 53.833' N	122° 52.196' W
MCKINNEY	Drop Point	71	41° 49.626' N	123° 00.224' W
MCKINNEY	Drop Point	56	41° 52.997' N	122° 51.596' W
MCKINNEY	Drop Point	31	41° 44.605' N	123° 00.373' W
MCKINNEY	Drop Point	25	41° 43.108' N	122° 58.377' W
MCKINNEY	Drop Point	13	41° 44.741' N	122° 50.200' W
MCKINNEY	Helispot	1	41° 51.879' N	122° 44.866' W
MCKINNEY	Helispot	2	41° 43.407' N	122° 58.120' W
MCKINNEY	Helispot	21	41° 48.380' N	122° 58.002' W
MCKINNEY	Helispot	31	41° 50.338' N	122° 42.816' W
MCKINNEY	Helispot	26	41° 50.872' N	122° 57.481' W
MCKINNEY	Incident Command Post	Montague Elementary	41° 43.683' N	122° 31.282' W
MCKINNEY	Mobile Retardant Base	Fort Jones MRB/Cargo	41° 37.560' N	122° 49.441' W
MCKINNEY	Sling Site		41° 48.320' N	122° 57.646' W
MCKINNEY	Sling Site		41° 48.320' N	122° 57.627' W
MCKINNEY	Sling Site		41° 53.243' N	122° 48.684' W
MCKINNEY	Staging Area		41° 49.833' N	122° 57.196' W
MCKINNEY	Staging Area		41° 49.982' N	122° 39.835' W
MCKINNEY	Staging Area		41° 50.579' N	122° 41.057' W
MCKINNEY	Staging Area		41° 51.863' N	122° 43.294' W
MCKINNEY	Staging Area		41° 44.541' N	122° 58.534' W
MCKINNEY	Staging Area		41° 48.045' N	123° 00.057' W
MCKINNEY	Staging Area		41° 49.862' N	122° 58.377' W
YETI	Aerial Hazard		41° 50.547' N	-123° 12.837' W
YETI	Aerial Hazard		41° 51.249' N	-123° 13.873' W
YETI	Division Break		41° 49.391' N	122° 59.882' W
YETI	Division Break		41° 51.732' N	-123° 18.616' W
YETI	Drop Point	301	41° 50.560' N	-123° 11.800' W
YETI	Drop Point	310	41° 49.428' N	-123° 15.320' W
YETI	Drop Point	330	41° 51.779' N	-123° 18.580' W
YETI	Drop Point	314	41° 49.104' N	-123° 16.280' W
YETI	Drop Point	313	41° 47.811' N	-123° 16.610' W
YETI	Drop Point	311	41° 47.873' N	-123° 14.561' W
YETI	Drop Point	301	41° 50.594' N	-123° 10.354' W
YETI	Drop Point	320	41° 48.238' N	-123° 19.890' W
YETI	Drop Point	328	41° 50.837' N	-123° 20.061' W
YETI	Drop Point	315	41° 48.729' N	-123° 16.972' W
YETI	Drop Point	302	41° 50.273' N	-123° 12.203' W
YETI	Drop Point	317	41° 47.663' N	-123° 18.230' W
YETI	Drop Point	312	41° 45.531' N	-123° 15.415' W
YETI	Helispot		41° 47.495' N	-123° 23.568' W
YETI	Helispot		41° 51.704' N	-123° 18.509' W
YETI	Incident Command Post		41° 47.814' N	-123° 22.229' W

80 feet contours

0 2 4 Kilometers
0 2 4 Miles

AIR OPS

1:70,000
Datum: North American 1983