

123°40'W

123°35'W

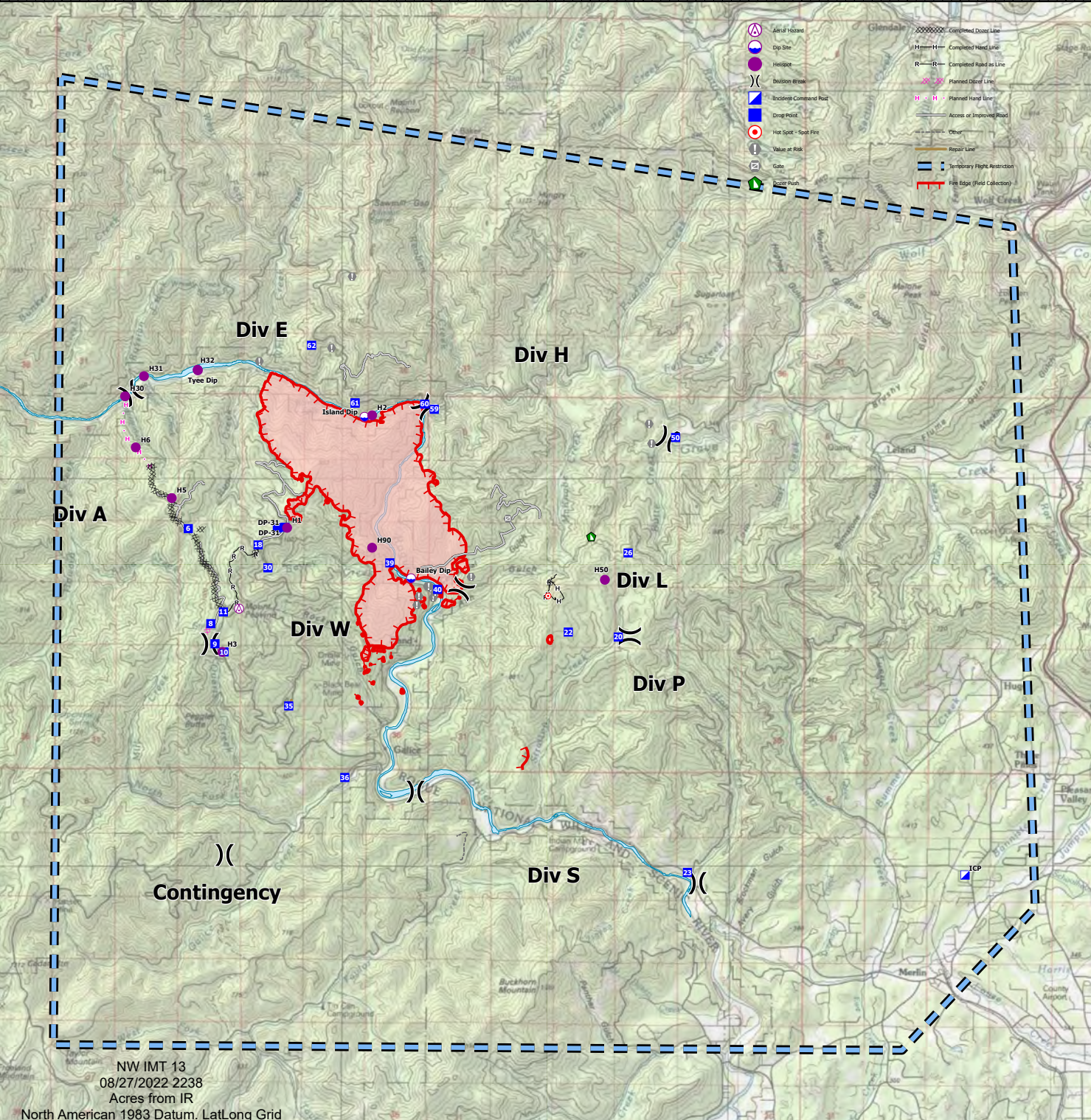
123°30'W

123°25'W

Air Operations
 Rum Creek
 ORMED000243
 08/28/2022 24hr
Rum Creek: 4319 acres on 08/26/2022 @ 2044
Hog Creek: 1:32 acres on 08/26/2022 @ 2044

0 0.75 1.5 3
 Miles

	Aerial Hazard		Completed Dozer Line
	Dip Site		Completed Hand Line
	Helispot		Completed Road as Line
	Division Break		Planned Dozer Line
	Incident Command Post		Planned Hand Line
	Drop Point		Access or Improved Road
	Hot Spot - Spot Fire		Other
	Value at Risk		Repair Line
	Gate		Temporary Flight Restriction
	Dozer Push		Fire Edge (Flood Collection)



FC Point Type	Label	Latitude WGS84 DDM	Longitude WGS84 DDM
Aerial Hazard		42° 36.106' N	123° 38.563' W
Dip Site	Bailey Dip	42° 36.546' N	123° 35.319' W
Dip Site	Island Dip	42° 38.795' N	123° 36.220' W
Dip Site	Tyee Dip	42° 39.428' N	123° 39.375' W
Division Break		42° 38.939' N	123° 35.089' W
Division Break		42° 32.319' N	123° 29.875' W
Division Break		42° 35.611' N	123° 39.108' W
Division Break		42° 36.407' N	123° 34.362' W
Division Break		42° 32.666' N	123° 38.801' W
Division Break		42° 39.102' N	123° 40.635' W
Division Break		42° 38.518' N	123° 30.499' W
Division Break		42° 35.760' N	123° 31.181' W
Division Break		42° 33.571' N	123° 35.207' W
Dozer Push		42° 37.144' N	123° 31.921' W
Drop Point	DP-31	42° 37.247' N	123° 37.710' W
Drop Point	18	42° 36.997' N	123° 38.211' W
Drop Point	11	42° 36.058' N	123° 38.858' W
Drop Point	30	42° 36.678' N	123° 38.024' W
Drop Point	20	42° 35.746' N	123° 31.399' W
Drop Point	26	42° 36.920' N	123° 31.222' W
Drop Point	22	42° 35.811' N	123° 32.343' W
Drop Point	61	42° 38.986' N	123° 36.401' W
Drop Point	36	42° 33.760' N	123° 36.543' W
Drop Point	10	42° 35.500' N	123° 38.841' W
Drop Point	59	42° 38.908' N	123° 34.902' W
Drop Point	60	42° 38.979' N	123° 35.084' W
Drop Point	39	42° 36.760' N	123° 35.721' W
Drop Point	62	42° 39.789' N	123° 37.230' W
Drop Point	50	42° 38.536' N	123° 30.338' W
Drop Point	35	42° 34.753' N	123° 37.611' W
Drop Point	6	42° 37.217' N	123° 39.533' W
Drop Point	61	42° 38.990' N	123° 36.401' W
Drop Point	40	42° 36.395' N	123° 34.816' W
Drop Point	9	42° 35.612' N	123° 39.013' W
Drop Point	23	42° 32.467' N	123° 30.066' W
Drop Point	8	42° 35.893' N	123° 39.094' W
Gate		42° 37.389' N	123° 33.497' W
Helispot	H2	42° 38.818' N	123° 36.075' W
Helispot	H3	42° 35.500' N	123° 38.871' W
Helispot	H50	42° 36.544' N	123° 31.658' W
Helispot	H1	42° 37.239' N	123° 37.668' W
Helispot	H5	42° 37.642' N	123° 39.850' W
Helispot	H32	42° 39.435' N	123° 39.380' W
Helispot	H30	42° 39.057' N	123° 40.747' W
Helispot	H90	42° 36.970' N	123° 36.058' W
Helispot	H31	42° 39.340' N	123° 40.394' W
Helispot	H6	42° 38.345' N	123° 40.538' W
Hot Spot - Spot Fire		42° 36.313' N	123° 32.728' W
Incident Command Post	ICP	42° 32.450' N	123° 24.828' W
Value at Risk		42° 39.561' N	123° 38.215' W
Value at Risk		42° 39.755' N	123° 36.850' W

NW IMT 13
 08/27/2022 2238
 Acres from IR
 North American 1983 Datum. LatLong Grid