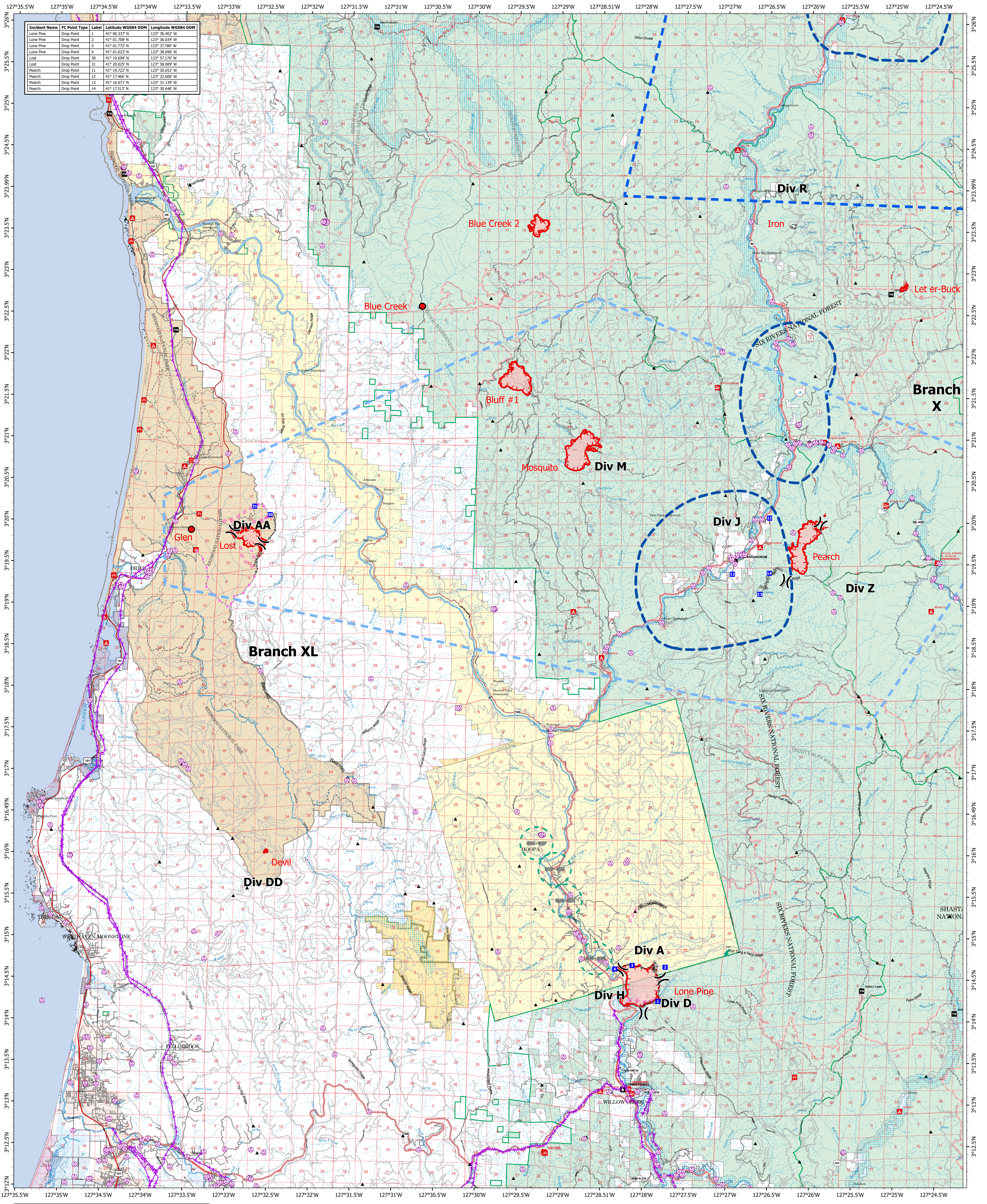


Incident Name	FC Point Type	Label	Latitude WGS84 DDM	Longitude WGS84 DDM
Lone Pine	Drop Point	1	41° 00.337' N	123° 36.402' W
Lone Pine	Drop Point	2	41° 01.708' N	123° 36.034' W
Lone Pine	Drop Point	3	41° 01.772' N	123° 37.780' W
Lone Pine	Drop Point	4	41° 01.623' N	123° 39.690' W
Lost	Drop Point	30	41° 19.694' N	123° 57.176' W
Lost	Drop Point	31	41° 20.025' N	123° 58.009' W
Pearch	Drop Point	11	41° 19.722' N	123° 30.652' W
Pearch	Drop Point	12	41° 17.466' N	123° 32.600' W
Pearch	Drop Point	13	41° 16.671' N	123° 31.139' W
Pearch	Drop Point	14	41° 17.513' N	123° 30.646' W



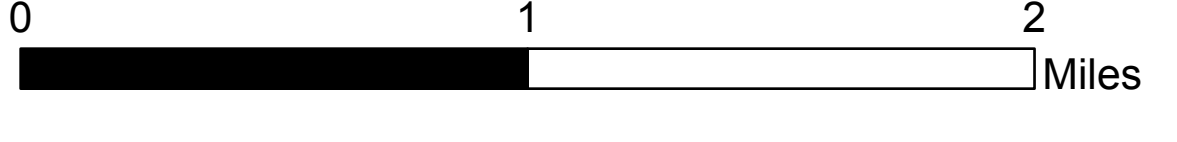
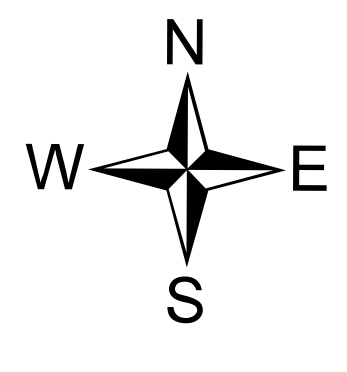
Air Operations

2023 SRF Lightning Complex

CA-SRF-0986

08/22/2023 Day

- Wildfire Daily Fire Perimeter
- Smaller Wildland Fire Location
- ⌋ Division Break
- ⊗ Completed Dozer Line
- ⊘ Completed Hand Line
- Completed Mixed Construction Line
- Completed Road as Line
- ⊗ Planned Dozer Line
- ⊘ Planned Hand Line
- Planned Road as Line
- Other
- Temporary Flight Restriction
- Fire Edge (Field Collection)
- ⊗ Aviation Obstacle Point
- ⊘ Aviation Obstacle Line
- Hoopa Tribe No Fly Zones
- Karuk Tribe Temporary No Fly Zones
- Happy Camp Complex TFR 3.7725



8/21/2023 2220Acres from IR and GPSSouth American 1983 Datum. Lat,Long Grid