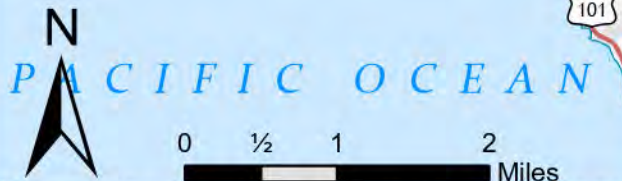
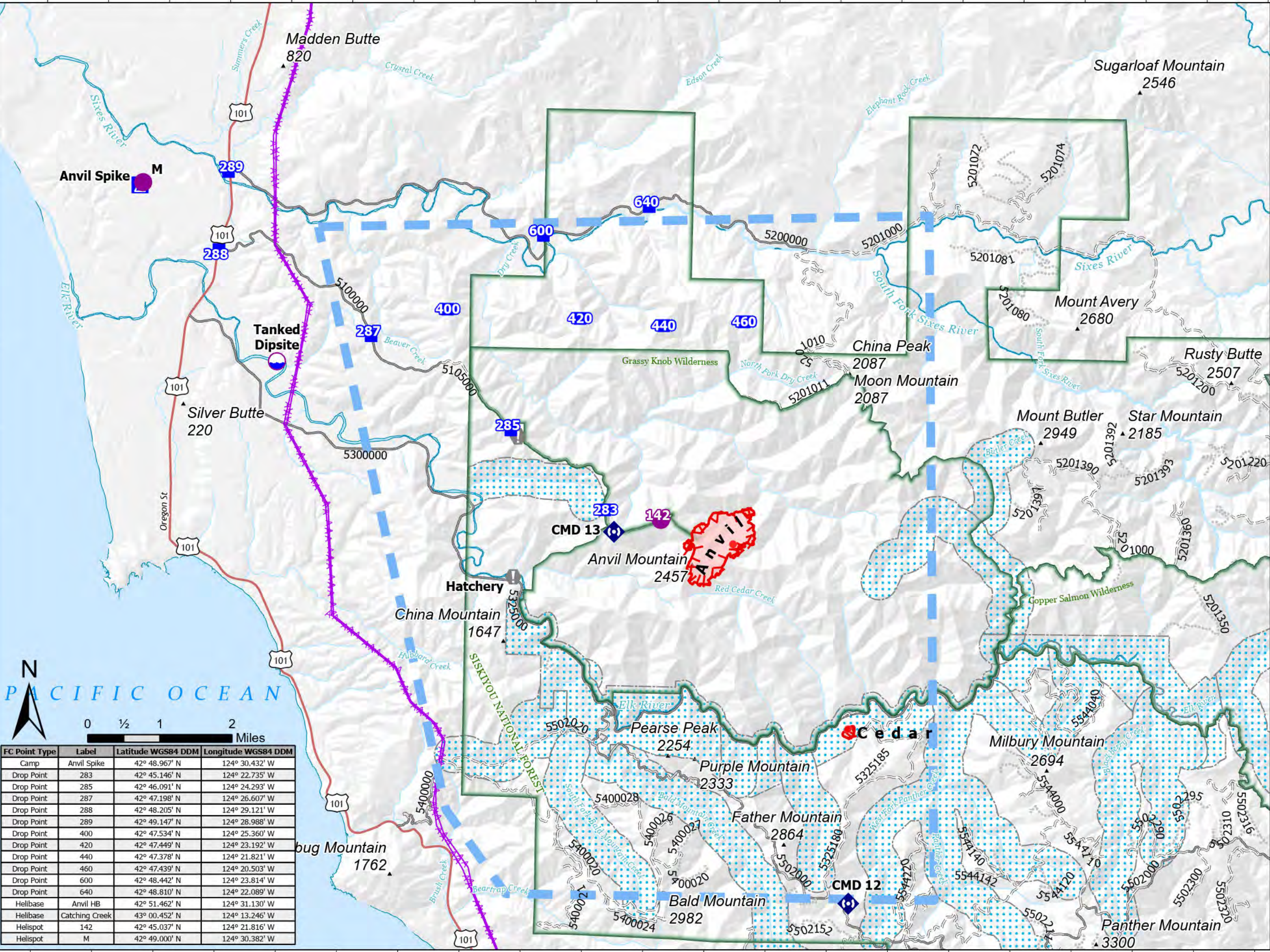


Pilot

Anvil
 OR-RSF-000413
 9/10/2023
 386 acres at 9/9/2023 2130

-  Dip Site
-  Helispot
-  Drop Point
-  Camp
-  Value at Risk
-  Repeater
-  Temporary Flight Restriction
-  Uncontained
-  Transmission Lines
-  Paved Road
-  Gravel Road
-  Unimproved Road
-  Closed Road



FC Point Type	Label	Latitude WGS84 DDM	Longitude WGS84 DDM
Camp	Anvil Spike	42° 48.967' N	124° 30.432' W
Drop Point	283	42° 45.146' N	124° 22.735' W
Drop Point	285	42° 46.091' N	124° 24.293' W
Drop Point	287	42° 47.198' N	124° 26.607' W
Drop Point	288	42° 48.205' N	124° 29.121' W
Drop Point	289	42° 49.147' N	124° 28.988' W
Drop Point	400	42° 47.534' N	124° 25.360' W
Drop Point	420	42° 47.449' N	124° 23.192' W
Drop Point	440	42° 47.378' N	124° 21.821' W
Drop Point	460	42° 47.439' N	124° 20.503' W
Drop Point	600	42° 48.442' N	124° 23.814' W
Drop Point	640	42° 48.810' N	124° 22.089' W
Helibase	Anvil HB	42° 51.462' N	124° 31.130' W
Helibase	Catching Creek	43° 00.452' N	124° 13.246' W
Helispot	142	42° 45.037' N	124° 21.816' W
Helispot	M	42° 49.000' N	124° 30.382' W