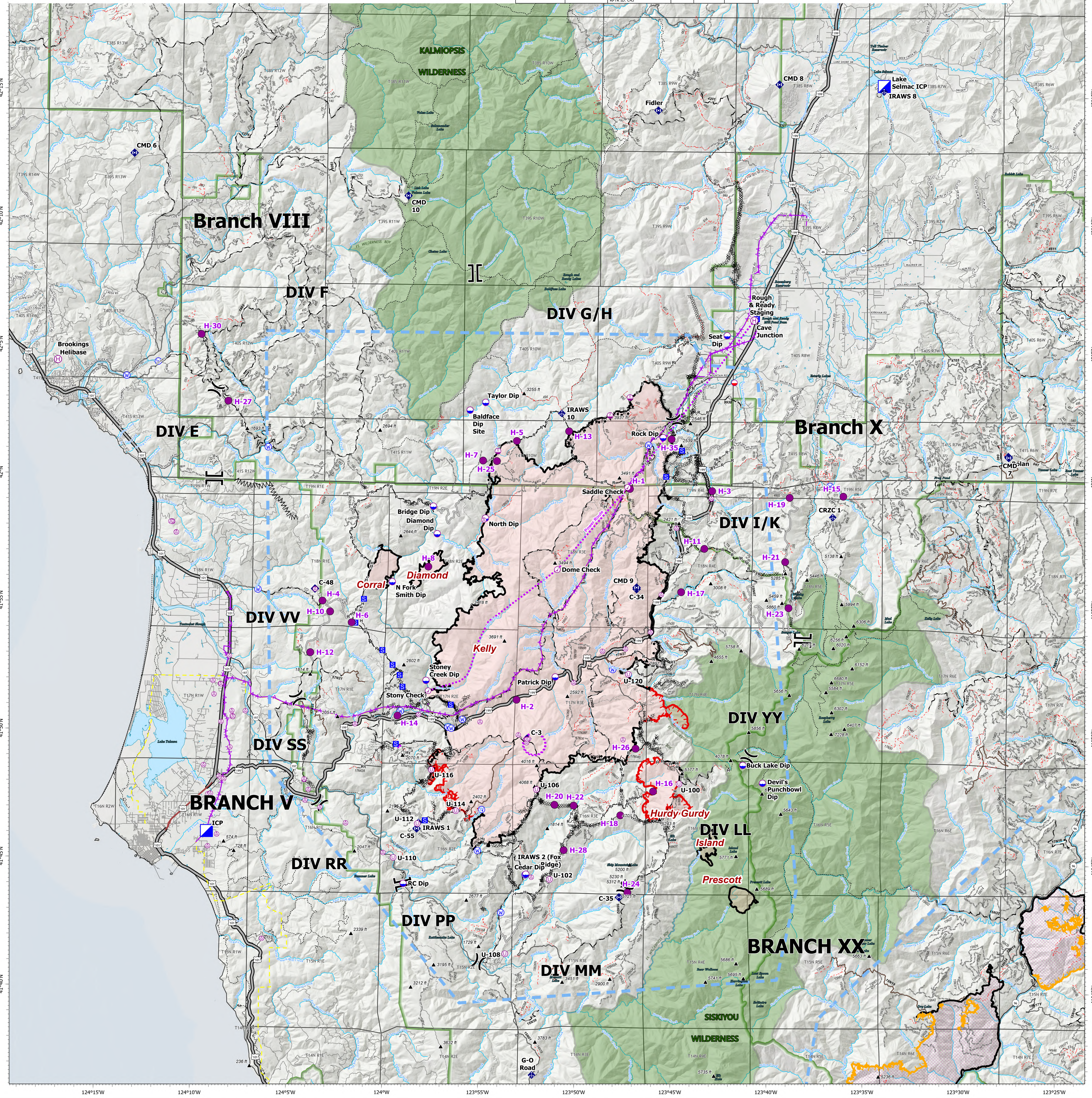


Point Type	Label	Comments	Elevation	Latitude	Longitude	Point Type	Label	Comments	Elevation	Latitude	Longitude	Point Type	Label	Comments	Elevation	Latitude	Longitude	Point Type	Label	Comments	Elevation	Latitude	Longitude	
Aviation Check Point	Dome Check			41° 56.462' N	123° 51.114' W	Helispot	H-12	Large open gravel pit. Type 2&3. HOGE	1920	41° 53.120' N	124° 03.944' W	Helispot	H-4	Good Type 1 & 3 Gravel but not too dusty. HOGE	2120	41° 55.140' N	123° 03.379' W	Repeater	CMD 8	8 Colter Hex. KR# 4312-FCK-C163 RFRTR ID: C53	4900	42° 15.475' N	123° 39.086' W	
Aviation Check Point	Saddle Check			41° 51.680' N	123° 47.796' W	Helispot	H-13	Type 2-3 approved. Dust abate.	4000	42° 01.867' N	123° 50.567' W	Helispot	H-5		3291	42° 01.470' N	123° 53.299' W	Repeater	CMD 9	Monkey Ridge KR#4312-FCK-C203 RFRTR ID: C53	3627	42° 14.422' N	123° 46.959' W	
Dip Site	Baldface Dip Site	Large pool with large bedrock outcropping on SW side of pool (River left)	1449	42° 02.651' N	123° 55.764' W	Helispot	H-14	Approved. Type 2 or Type 3	252	41° 56.699' N	123° 59.395' W	Helispot	H-6	Potential dust abatement needed. Type 3 only. HOGE	1612	41° 54.312' N	124° 01.841' W	Repeater	Fidler		4927	42° 14.422' N	123° 46.037' W	
Dip Site	Bridge Dip	Possible Dip Site up stream of bridge	900	41° 58.884' N	123° 57.630' W	Helispot	H-15	Approved. Type 2 or Type 3	2000	41° 59.400' N	123° 38.180' W	Helispot	H-7	Type 2 and 3 approved. Dust abate. Minimal improvements needed 6-8 small trees. No other hazards identified. Type 2 or 3. No Dust abatement needed	3310	42° 00.692' N	123° 55.056' W	Repeater	Stony Creek		3810	42° 03.206' N	123° 47.396' W	
Dip Site	Buck Lake Dip	Approved by READS. Has not been utilized.	4292	41° 48.879' N	123° 41.335' W	Helispot	H-16	ARCI cleared by ARCH SULLIVAN 9/07/2023	3715	41° 47.832' N	123° 46.004' W	Helispot	H-8		3000	41° 56.525' N	123° 57.858' W	Repeater	Stony Creek		3926	42° 02.499' N	123° 48.429' W	
Dip Site	Cedar Dip			41° 44.550' N	123° 52.600' W	Helispot	H-17	Type2/Type3	1501	41° 56.627' N	123° 44.629' W	Helispot	H-18	Approved, type 2 helicopter per Helibase.	4685	41° 46.889' N	123° 47.702' W	Repeater	Stony Creek		427	42° 03.065' N	123° 54.811' W	
Dip Site	Devil's Punchbowl Dip	READS approved	4760	41° 48.185' N	123° 40.299' W	Helispot	H-18	Type2/Type3	3616	41° 59.338' N	123° 38.994' W	Mobile Retardant Base	CRZC 1	coords and elev from IMET	1400	42° 03.812' N	123° 41.931' W	Repeater	Stony Creek		4850	41° 48.137' N	123° 44.656' W	
Dip Site	Diamond Dip	Diamond Dip	700	41° 57.811' N	123° 57.412' W	Helispot	H-19	Needs Improvement-DIV VV is aware/ ARCI cleared by ARCH SULLIVAN 9/07/2023	1000	41° 51.360' N	123° 53.178' W	Mobile Weather Unit	G-O Road		3790	41° 58.583' N	123° 38.732' W	Repeater	Stony Creek		4107	41° 47.907' N	123° 52.007' W	
Dip Site	N Fork Smith Dip	clutter edit	1200	41° 55.522' N	123° 59.741' W	Helispot	H-20	Approved for Type 2	3144	41° 47.275' N	123° 51.144' W	Mobile Weather Unit	IRAWS 1	Coon Mtn.	4026	42° 02.561' N	123° 50.969' W	Repeater	Stony Creek		827	41° 41.443' N	123° 53.650' W	
Dip Site	North Dip			41° 52.440' N	123° 54.900' W	Helispot	H-21	Type2/Type3 - Must have dust abatement.	4629	41° 56.831' N	123° 39.203' W	Mobile Weather Unit	IRAWS 10	coords and elev from IMET	4026	42° 02.561' N	123° 50.969' W	Repeater	Stony Creek		2432	41° 44.355' N	123° 51.368' W	
Dip Site	Patrick Dip			41° 52.266' N	123° 51.160' W	Helispot	H-22	Type2/Type3	1876	41° 47.252' N	123° 50.140' W	Mobile Weather Unit	IRAWS 2 (Fox Ridge)	coords and elev from IMET	3448	41° 45.502' N	123° 50.638' W	Repeater	Stony Creek		453	41° 45.150' N	123° 59.533' W	
Dip Site	RC Dip	Potential Dip Site	345	41° 44.143' N	123° 58.995' W	Helispot	H-23	Approved for Type 2	4982	41° 43.875' N	123° 47.298' W	Repeater	Bolan		6221	42° 00.992' N	123° 27.555' W	Repeater	Stony Creek		2676	41° 46.467' N	123° 58.289' W	
Dip Site	Rock Dip			42° 01.650' N	123° 45.641' W	Helispot	H-24	Approved for Type 2	3000	42° 00.678' N	123° 54.330' W	Repeater	C-3		3708	41° 48.945' N	123° 52.604' W	Repeater	Stony Creek		2166	41° 47.006' N	123° 56.286' W	
Dip Site	Seat Dip			42° 03.650' N	123° 42.320' W	Helispot	H-25	Type2/Type3	5480	41° 55.027' N	123° 39.011' W	Repeater	C-34	For use on the South side	3696	41° 55.726' N	123° 46.958' W	Repeater	Stony Creek		1929	41° 48.598' N	123° 57.584' W	
Dip Site	Stony Creek Dip	clutter edit	1457	42° 03.650' N	123° 42.320' W	Helispot	H-26	Approved for Type 2	4982	41° 43.875' N	123° 47.298' W	Repeater	C-35		5310	41° 43.686' N	123° 47.732' W	Repeater	Stony Creek		1349	41° 48.598' N	123° 57.584' W	
Dip Site	Taylor Dip			41° 52.266' N	123° 51.160' W	Helispot	H-27	Type III Helicopter	1359	42° 02.907' N	124° 08.434' W	Repeater	C-48	High Divide	2293	41° 55.617' N	124° 03.787' W	Repeater	Stony Creek		1142	41° 52.397' N	123° 47.345' W	
Helibase	Brookings Helibase		466	42° 04.433' N	124° 17.390' W	Helispot	H-28	Type 1-2-3 approved. No dust abatement.	3538	41° 46.492' N	123° 48.539' W	Repeater	CMD 10		4526	42° 11.006' N	123° 59.116' W	Repeater	Stony Creek					
Helibase	Cave Junction		1378	42° 06.250' N	123° 40.917' W	Helispot	H-3	Type 1-2-3 approved. No dust abatement.	1700	41° 59.571' N	124° 43.053' W	Repeater	CMD 6		3438	42° 15.545' N	124° 13.517' W	Repeater	Stony Creek					
Helispot	H-1	HIGE needs dust abatement.	3500	41° 59.630' N	123° 41.390' W	Helispot	H-30	Approved type 2 helicopter	1906	42° 01.599' N	123° 45.210' W	Repeater	CMD 7	Boland Rock KR#4312-FCK-C221 RFRTR ID: C53	6222	42° 00.954' N	123° 27.535' W	Repeater	Stony Creek					
Helispot	H-10	Good gravel. Type 3 Only. 2-way approach. HOGE	2400	41° 54.727' N	124° 02.973' W	Helispot	H-35	Approved type 2 helicopter																
Helispot	H-11	Type2/Type3/SHADE	2905	41° 57.323' N	123° 43.438' W	Helispot																		



Smith River Complex North

CA-SRF-000968
9/22/2023
93,559 acres at 9/20/2023 @ 2036 PDT

<ul style="list-style-type: none"> Aviation Check Point Helibase Mobile Retardant Base Helispot Dip Site Sling Site Unimproved Landing Area Aerial Hazard Branch Hazard Division Break 	<ul style="list-style-type: none"> Incident Command Post Staging Area Mobile Weather Unit Water Source Contained Uncontained Contained (OTHER) Completed Burnout Completed Dozer Line Completed Fuel Break Completed Hand Line Completed Mixed Construction Line Completed Road as Line Access or Improved Road Aerial Hazard Aviation Route UAS Launch and Recovery Zone 	<ul style="list-style-type: none"> Temporary Flight Restriction Wildfire Daily Perimeter (OTHER) Federal Wilderness Boundary National Forest Boundary Transmission Lines Paved Road Gravel Road Dirt Roads Unimproved Roads Closed Roads Expressway Secondary Hwy Local Connector Local Road Ramp 4WD Tunnel Trail
--	--	--



Datum: North American 1983
PNW Updated: 9/21/2023 2:43