



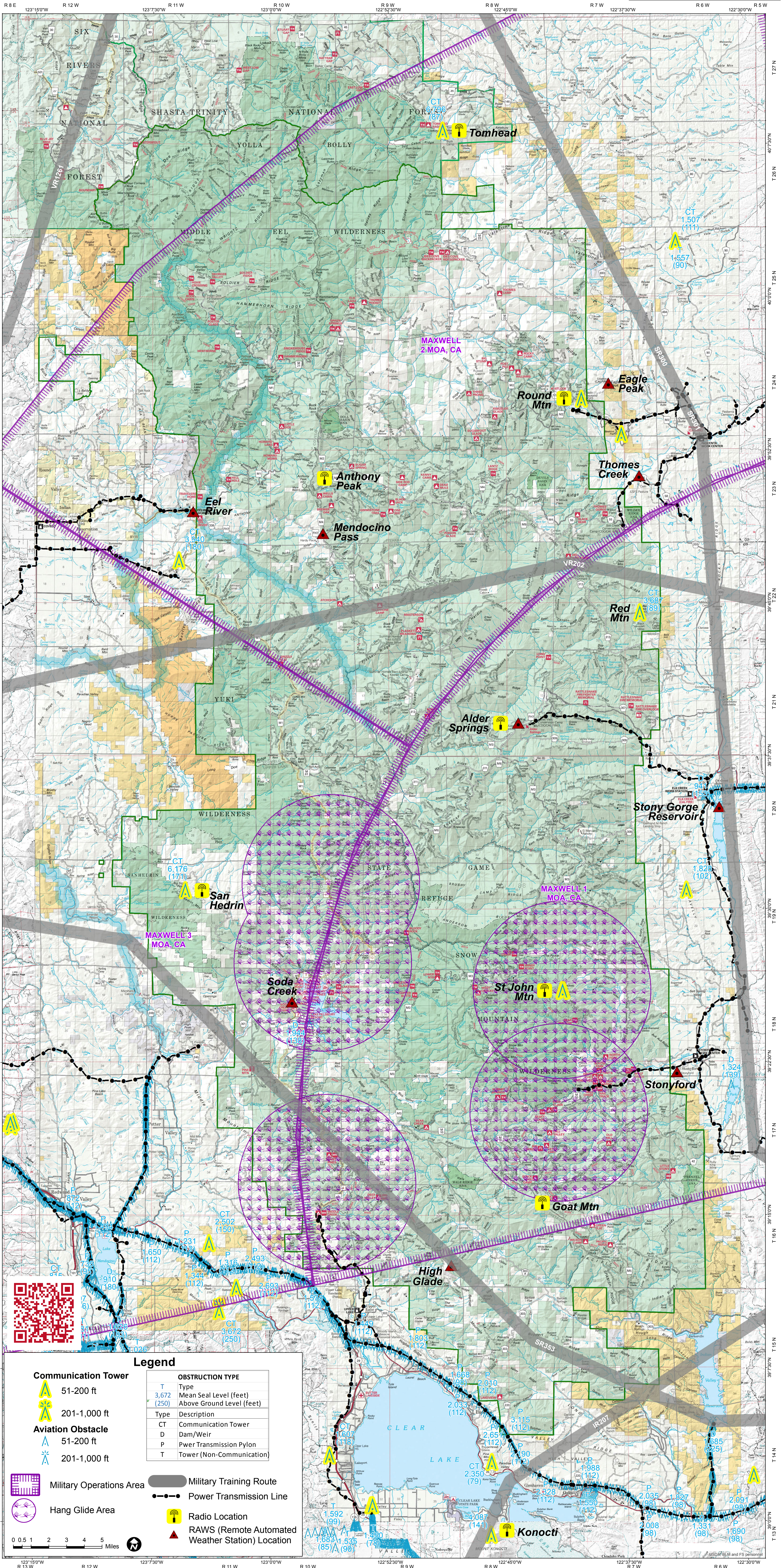
FLIGHT HAZARDS

Mendocino National Forest

May 2017

Warning: This map is not to be used for VFR navigational purposes! It is primarily designed for identifying hazards and obstacles that may be encountered while flying at low altitudes during air operations. See FAA "Sectional" Aeronautical Chart for details.

Curtis Coats
Fire Management Officer, Mendocino National Forest



Legend

Communication Tower		OBSTRUCTION TYPE	
	51-200 ft	T	Type
	201-1,000 ft	3,672	Mean Seal Level (feet)
	Aviation Obstacle	(250)	Above Ground Level (feet)
	51-200 ft	Type	Description
	201-1,000 ft	CT	Communication Tower
	Military Operations Area	D	Dam/Weir
	Hang Glide Area	P	Pwr Transmission Pylon
	Military Training Route	T	Tower (Non-Communication)
	Power Transmission Line		
	Radio Location		
	RAWS (Remote Automated Weather Station) Location		

