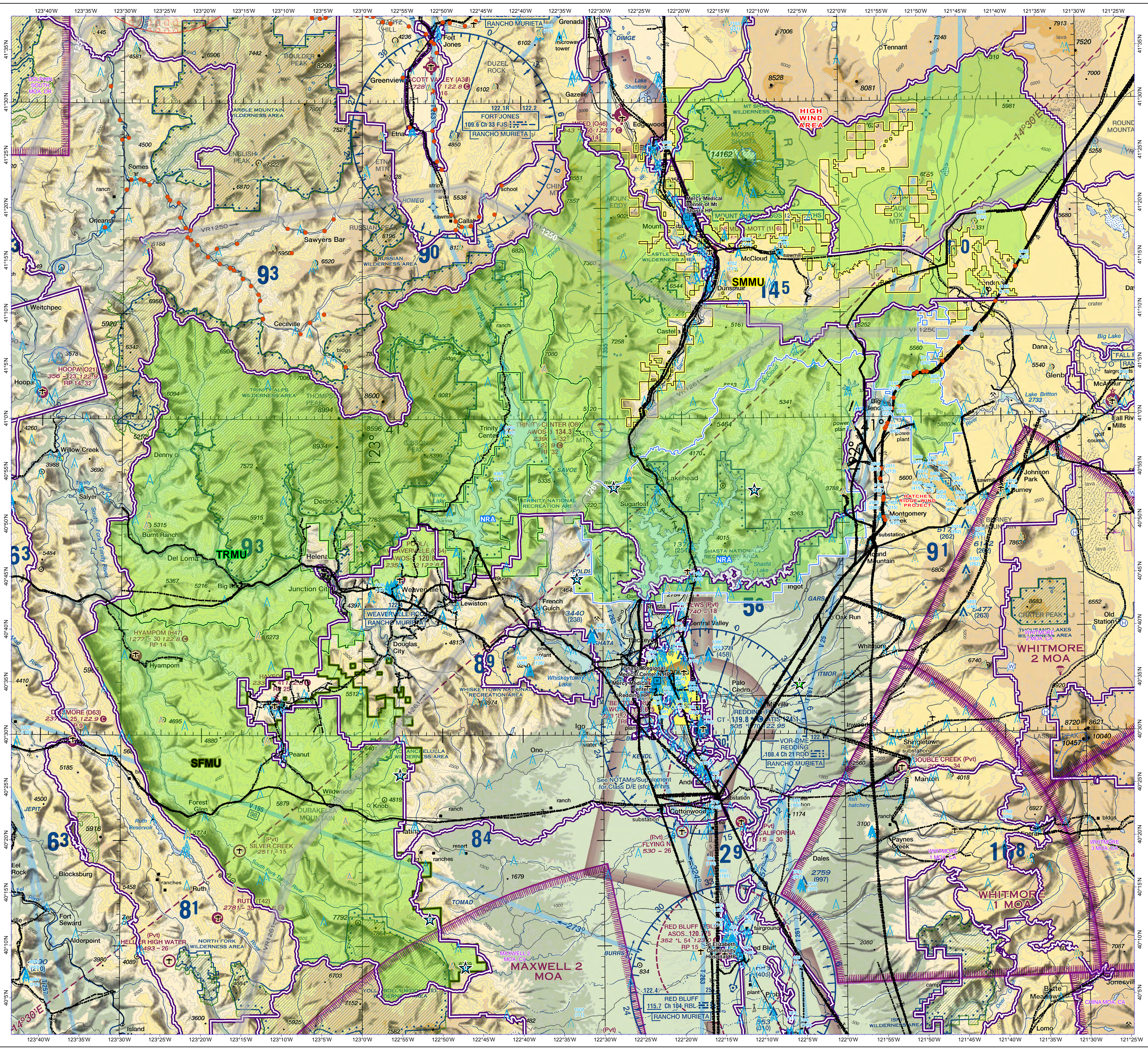


Shasta - Trinity National Forest AVIATION HAZARD 2020



Legend

- Forest Service Jetison Areas
- CalFire Jetison Areas
- Night Helispots
- Hospital
- Aerial cable
- Bridge
- Tower
- 51 ft - 200 ft
- 201 ft - 2000 ft
- Airport
- Congested area
- Dip site
- Hangglide/Paraglide
- Helibase
- Helispot
- Parachute Jumping
- Bridge/Ovpass/Viaduct
- Telephone Line/Telegraph Line
- Power Transmission Line
- Military Training Route
- Aerial cable
- Telephone wires
- Turbulence
- A
- M
- R
- W
- Aerobatic
- Congested area
- Hangglide/Paraglide
- Jetison
- MOA
- No Dipping
- No Fly Zone
- Peak
- Powertine
- Turbulence
- Windmill
- Hangglide/Paraglide
- Zebra mussel
- Quagga mussel
- Direct Protection Areas
- Administrative Forest
- Wilderness
- Waterbody
- NRA
- SFMU
- SMMU
- TRMU

JETISON	NAME	LATITUDE	LONGITUDE	BEARING/NAUTICAL MI
1	Tomhead Mtn 6758	40° 47.236' N	122° 47.236' W	234 32
NOTES: Avoid North facing slopes				
2	Wells Creek Pk 4816	40° 51.647' N	122° 51.647' W	234 31.7
NOTES: Avoid North facing slopes				
3	Knob Peak 4819	40° 26.283' N	122° 55.294' W	260.62 28.95
NOTES: Avoid N facing slopes plus Caution MTR 2 mi E				
4	Mammoth Butte 4217	40° 44.858' N	122° 33.229' W	319.81 18.03
NOTES: Avoid streams				
5	Dog Creek Mtn 4488	40° 53.515' N	122° 28.554' W	340 23.85
NOTES: Caution ridgeline trail				
6	Salt Cr Mtn 4179	40° 53.200' N	122° 30.957' W	33.34 22.69
NOTES: Avoid limestone outcrops				
7	Calfire - Bulkhorn	40° 34.778' N	122° 05.557' W	51 10
NOTES: Caution - Powerlines to West and South				

Bearing/Nautil Miles calculated from RDD VOR



NOTE: This working map is provided for reference only and is NOT intended to be inclusive of all known hazards. POWERLINES are approximate locations.

DISCLAIMER: The Forest Service uses the most current and complete data available. GIS data and product accuracy may vary. Data may be developed from sources of differing accuracy, accuracy only at certain scales, based on modeling or interpretation, incomplete while being created or revised. Using GIS products for purposes other than those for which they were created, may yield inaccurate or misleading results. The Forest Service reserves the right to correct, update, modify, or replace GIS products without notification. For more information, contact: Shasta-Trinity National Forest, 3664 Avoca Parkway, Redding, CA 96002

0 5 10
Nautical Miles
Projection: UTM Zone 10N (WGS84)

John M. Casey
FAO Approved April 30th, 2020

