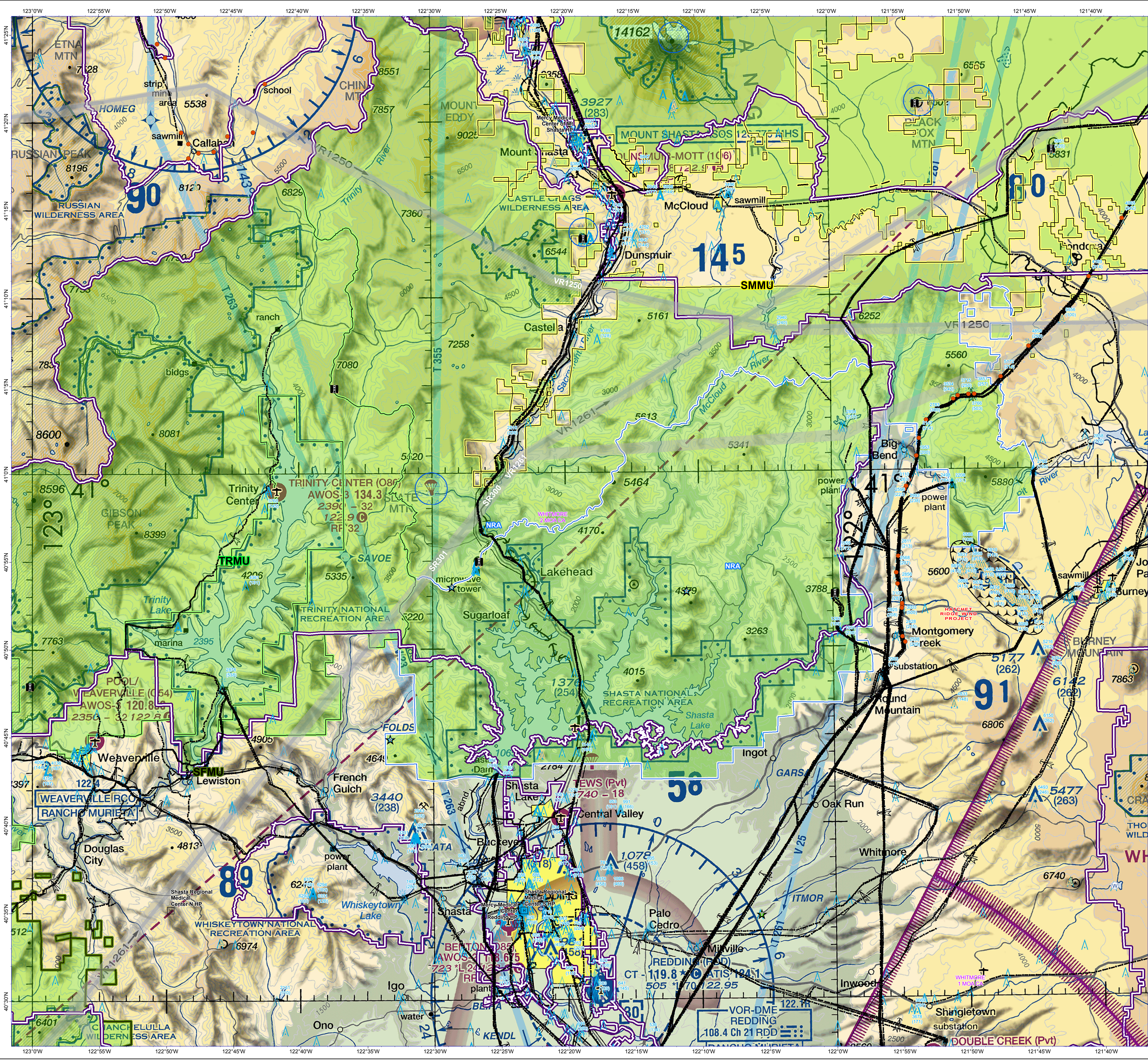


Shasta - Trinity National Forest AVIATION HAZARD 2021 NRA



- Fire Lookout
- FS Jetison Area
- Callfire Jetison Area
- Congested area
- Dip site
- Helibase
- Aerial cable
- Tower
- 50 - 200
- 201 - 14006
- Hospital
- Powerline
- Military Training Route
- Peak
- Windmill
- MOA
- Direct Protection Areas
- Administrative Forest
- Existing Wilderness
- NRA
- SFMU
- SMMU
- TRMU

JETTISON	NAME	LATITUDE	LONGITUDE	BEARING	NAUTICAL MI
1	Townhead Mtn 6758	40° 7.987' N	122° 42.267' W	224	UNIT 32
NOTES					
Avoid North facing slopes					
2	Wells Creek Pk 4816	40° 32.433' N	122° 51.642' W	234	UNIT 31.7
NOTES					
Avoid North facing slopes					
3	Knob Peak 4819	40° 26.287' N	122° 55.294' W	260.62	UNIT 28.95
NOTES					
Avoid N facing slopes plus Caution MTR 2 mi E					
4	Mammoth Butte 4217	40° 44.858' N	122° 33.227' W	319.81	UNIT 38.03
NOTES					
Avoid streams					
5	Dog Creek Mtn 4888	40° 53.535' N	122° 28.554' W	340	UNIT 23.85
NOTES					
Caution ridge/top trail					
6	Salt Crk Mtn 4879	40° 53.207' N	122° 10.957' W	13.34	UNIT 22.69
NOTES					
Avoid limestone outcrops					
7	Callfire - Buckhorn	40° 34.778' N	122° 05.527' W	51	UNIT 10
NOTES					
Caution - Powerlines to West and South					

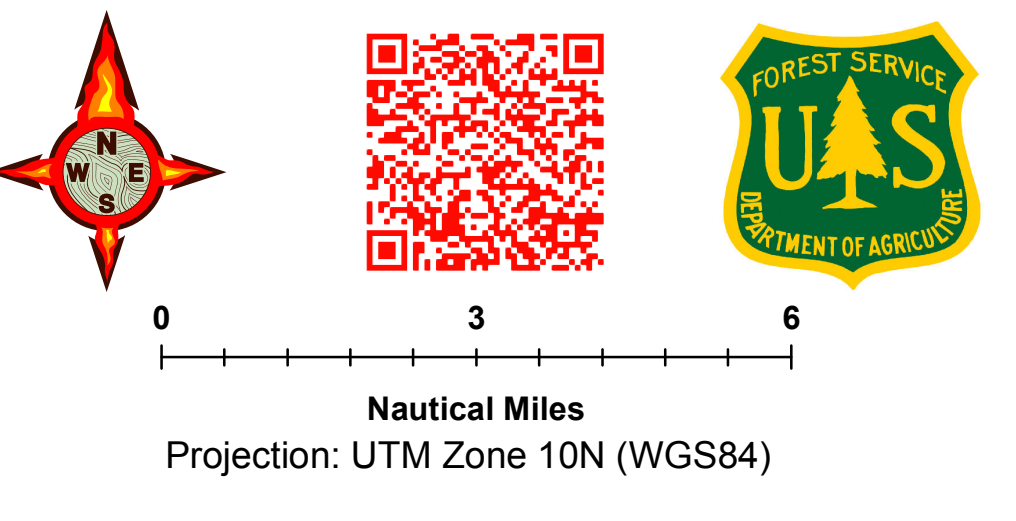
*Bearing/Nautil Miles calculated from RDD VOR



NOTE:
This warning map is provided for reference only and is NOT intended to be inclusive of all known hazards. POWERLINES are approximate locations.

DISCLAIMER:
The Forest Service uses the most current and complete data available. GIS data and product accuracy may vary. Data may be developed from sources of differing accuracy, accurate only at certain scales, based on modeling or interpretation, incomplete while being created or revised. Using GIS products for purposes other than those for which they were created, may yield inaccurate or misleading results.

The Forest Service reserves the right to correct, update, modify, or replace GIS products without notification. For more information, contact:
Shasta-Trinity National Forest
3644 Arvach Parkway
Redding, CA 96002



Cole Wallace
Cole Wallace
FAO Approved April 23rd, 2021

