

Shasta - Trinity National Forest AVIATION HAZARD 2022 Whiskeytown - NRA

- Firelook
- FS Jetson Area
- Cable Jetson Area
- Aerial cable
- Bridge
- Tower
- Airport
- Congested area
- Dip site
- Hangoff/P angle
- Helibase
- Helipad
- Parashute Jumping
- Parashute Jump Areas
- AviationActivity_Pt_2021_DAFIF_Airport
- Bridge/Crossing/Obst
- Miscellaneous Air Observation
- Power Transmission Line
- Aerial cable
- Powerline
- Telephone wires
- Turbulence
- Military Training Route
- Direct Protection Areas
- Existing Wilderness
- Administrative Forest
- Aesthetic
- Congested area
- Hangoff/P Paraglides
- Jetson
- MDA
- No Clipping
- No Fly Zone
- Peak
- Powerline
- Turbulence
- Wildlife
- A. MDA
- R/W
- NRA
- SFMU
- SMMU
- TRMU

JETTISON	NAME	LONGITUDE	BEARING/NAUTICAL MI
1	Townhead Mtn 6758	47° 7.987' N	122° 47.230' W 224
NOTES			
Avoid North facing slopes			
2	Dog Creek Pk 4816	47° 12.433' N	122° 51.642' W 234
NOTES			
Avoid North facing slopes			
3	Knob Peak 4819	47° 26.287' N	122° 55.294' W 260.62
NOTES			
Avoid N facing slopes plus Caution MTR 2 mi E			
4	Mammoth Butte 4217	47° 33.229' N	122° 33.229' W 319.81
NOTES			
Avoid streams			
5	Dog Creek Mtn 4888	47° 53.515' N	122° 28.554' W 340
NOTES			
Caution ridge/top trail			
6	Sail Crk Mtn 4879	47° 53.207' N	122° 10.957' W 13.34
NOTES			
Avoid limestone outcrops			
7	Call Fire - Buckhorn	47° 34.778' N	122° 05.552' W 51
NOTES			
Caution - Powerlines to West and South			

*Bearing/Nautical Miles calculated from RDD VOR



NOTE:
This working map is provided for reference only and is NOT intended to be inclusive of all known hazards. POWERLINES are approximate locations.

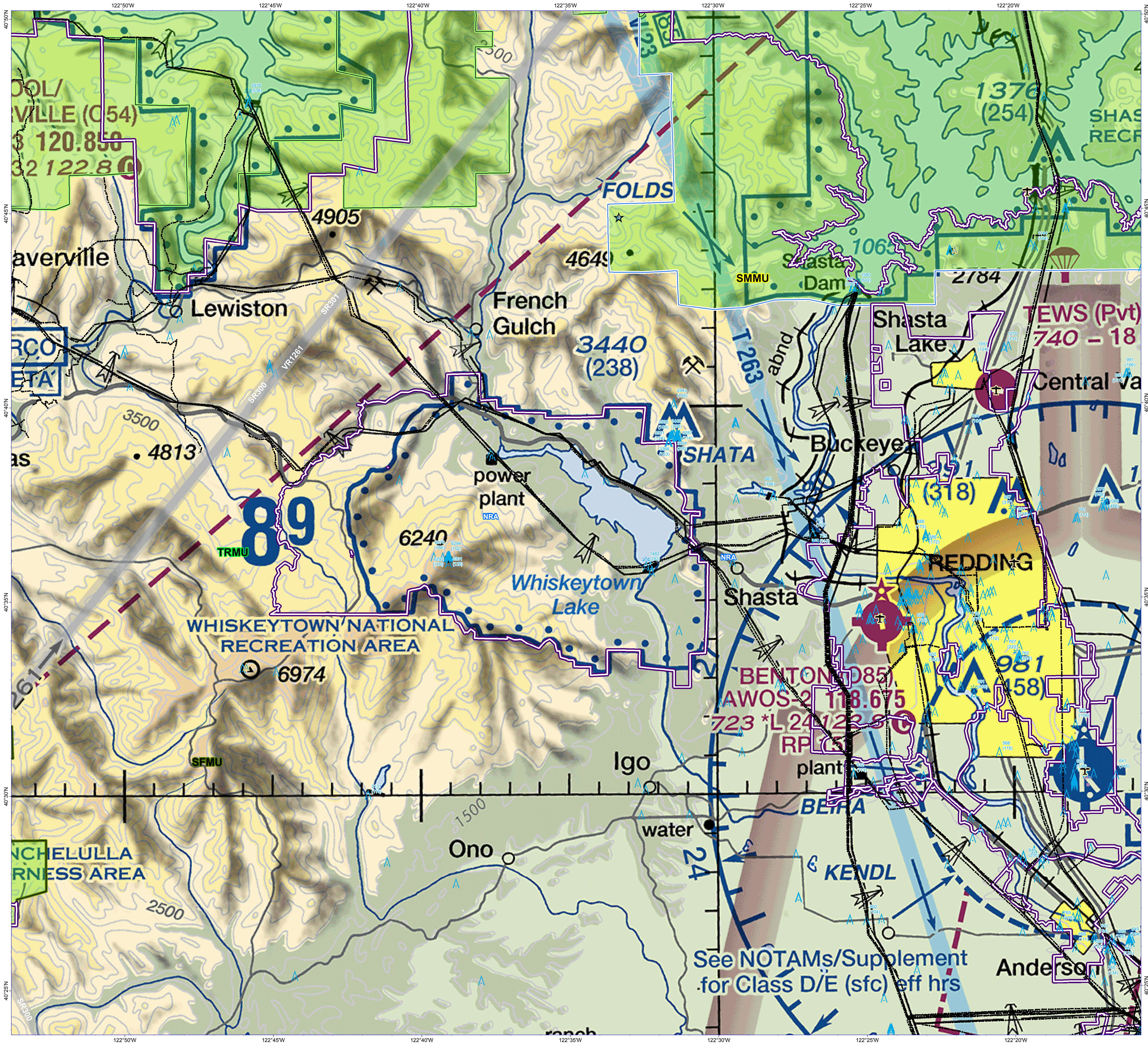
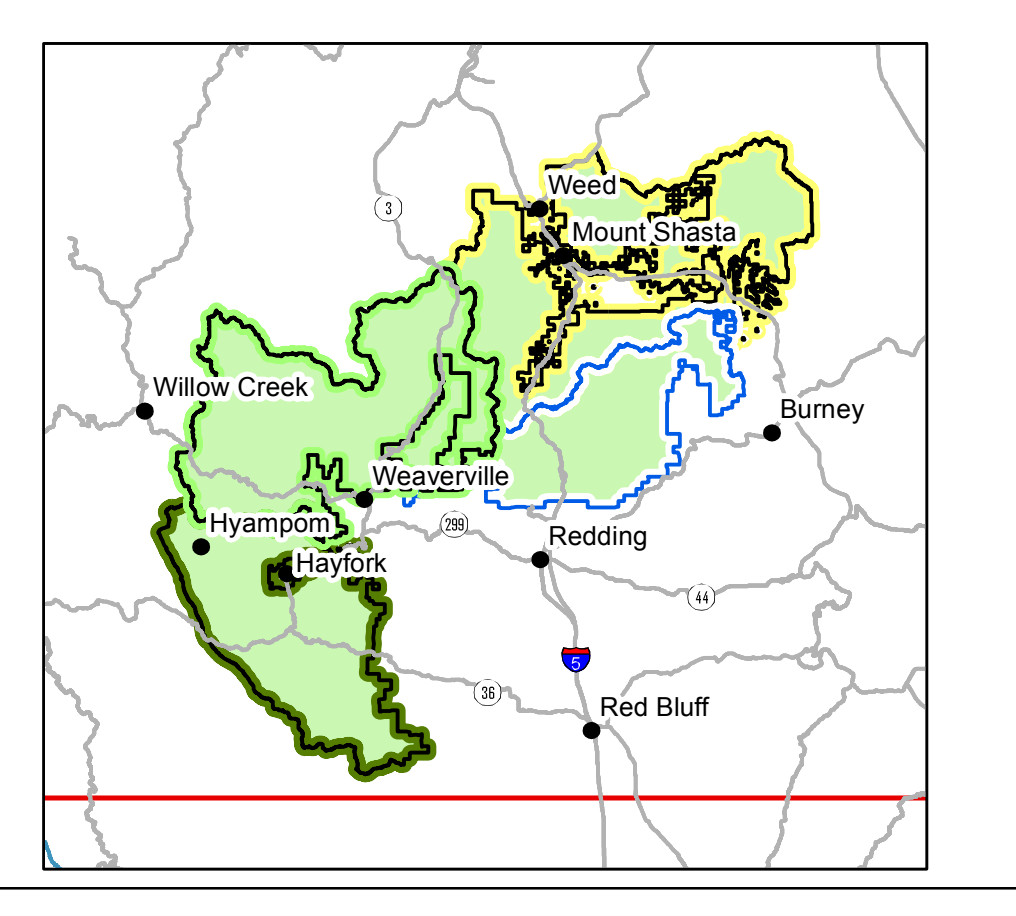
DISCLAIMER:
The Forest Service uses the most current and complete data available. GIS data and product accuracy may vary. Data may be developed from sources of differing accuracy, accurate only at certain scales, based on modeling or interpretation, incomplete, while being created or revised. Using GIS products for purposes other than those for which they were created, may yield inaccurate or misleading results.

The Forest Service reserves the right to correct, update, modify, or replace, GIS products without notification. For more information, contact:
Shasta-Trinity National Forest
3644 Arvich Parkway
Redding, CA 96002



0 1 2
Nautical Miles
Projection: UTM Zone 10N (WGS84)

Cole Wallace
Cole Wallace
FAO Approved March 11th, 2022



See NOTAMs/Supplement
for Class D/E (sfc) eff hrs