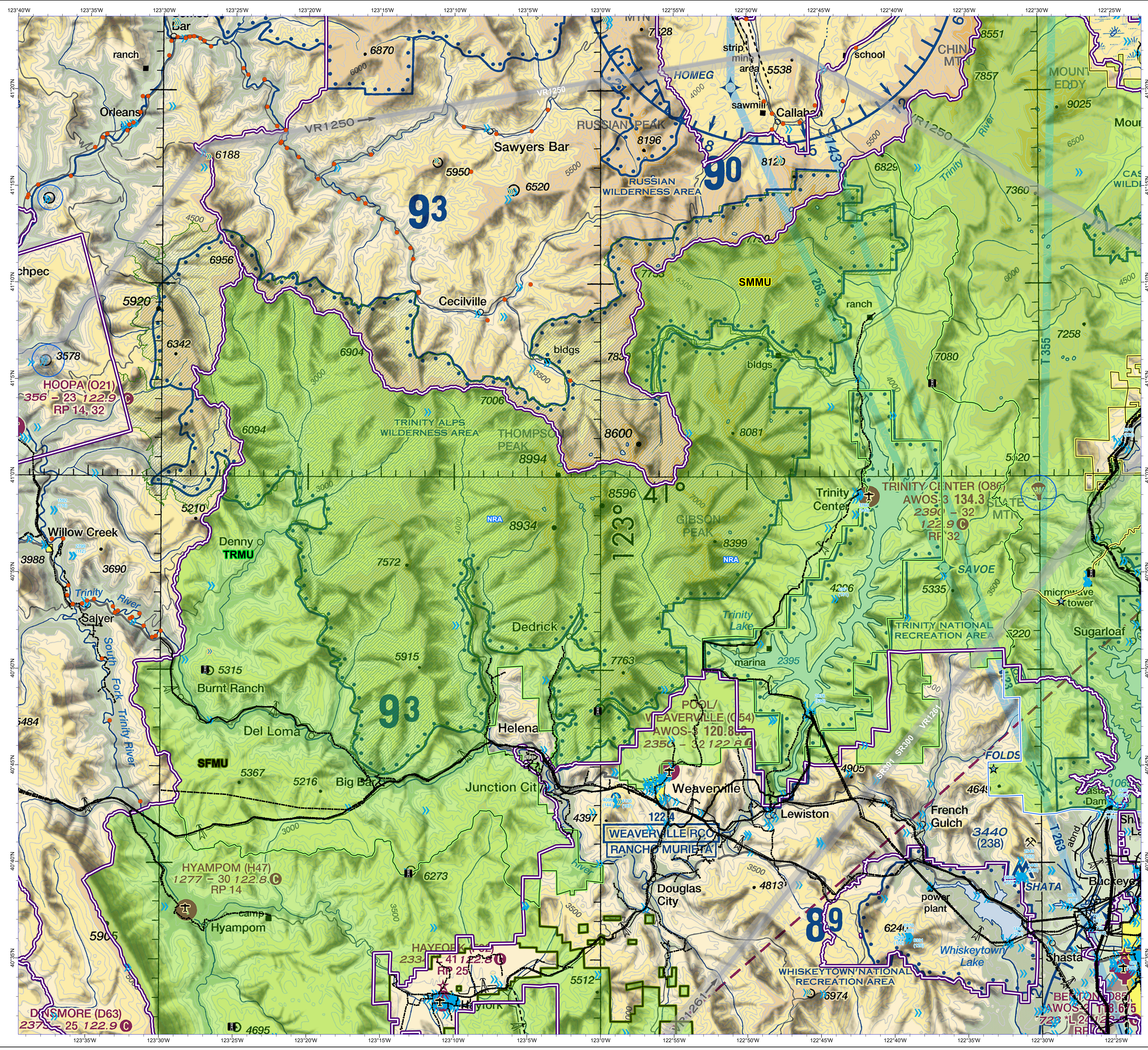


Shasta - Trinity National Forest AVIATION HAZARD 2023 TRMU



- Firelookout
- FS Jetsetion Area
- Aerial cable
- Bridge
- Tower
- 50 - 200
- 201 - 14006
- Airport
- Powerline
- Military Training Route
- Direct Protection Areas
- Existing Wilderness
- Administrative Forest
- Jetsetion
- Peak
- National Recreation Area
- South Fork Management Unit
- Shasta McCloud Management Unit
- Trinity River Management Unit

ID	NAME	LATITUDE	LONGITUDE	BEARING	NAUTICAL MI
1	Summit Mtn 6758	40° 7.987' N	122° 47.230' W	224	31
NOTES					
Avoid North facing slopes					
ELEVATION UNIT					
2	Wells Creek Pk 4816	40° 12.433' N	122° 51.842' W	234	31.7
NOTES					
Avoid North facing slopes					
ELEVATION UNIT					
3	Knob Peak 4819	40° 26.283' N	122° 55.294' W	260.6	28.95
NOTES					
Avoid N facing slopes plus Caution MTR 2 mi E					
ELEVATION UNIT					
4	Mammoth Butte 4217	40° 44.858' N	122° 33.229' W	315.8	34.03
NOTES					
Avoid streams					
ELEVATION UNIT					
5	Dog Creek Mtn 4488	40° 53.515' N	122° 28.554' W	340	23.85
NOTES					
Caution ridge/top trail					
ELEVATION UNIT					
6	Salt Crk Mtn 4379	40° 53.200' N	122° 10.953' W	13.34	22.04
NOTES					
Avoid limestone outcrops					
ELEVATION UNIT					
7	Calfire - Buckhorn	40° 34.778' N	122° 06.552' W	51	10
NOTES					
Caution - Powerlines to West and South					
ELEVATION UNIT					
CDF					

*Bearing/Nautil Miles calculated from RDD VOR



NOTE:
This warning map is provided for reference only and is NOT intended to be inclusive of all known hazards. POWERLINES are approximate locations.

DISCLAIMER:
The Forest Service uses the most current and complete data available. GIS data and product accuracy may vary. Data may be developed from sources of differing accuracy, accurate only at certain scales, based on modeling or interpretation, incorporate while being created or revised. Using GIS products for purposes other than those for which they were created, may give inaccurate or misleading results.
The Forest Service reserves the right to correct, update, modify, or replace, GIS products without notification. For more information, contact:
Shasta-Trinity National Forest
3644 Arsoch Parkway
Redding, CA 96002

