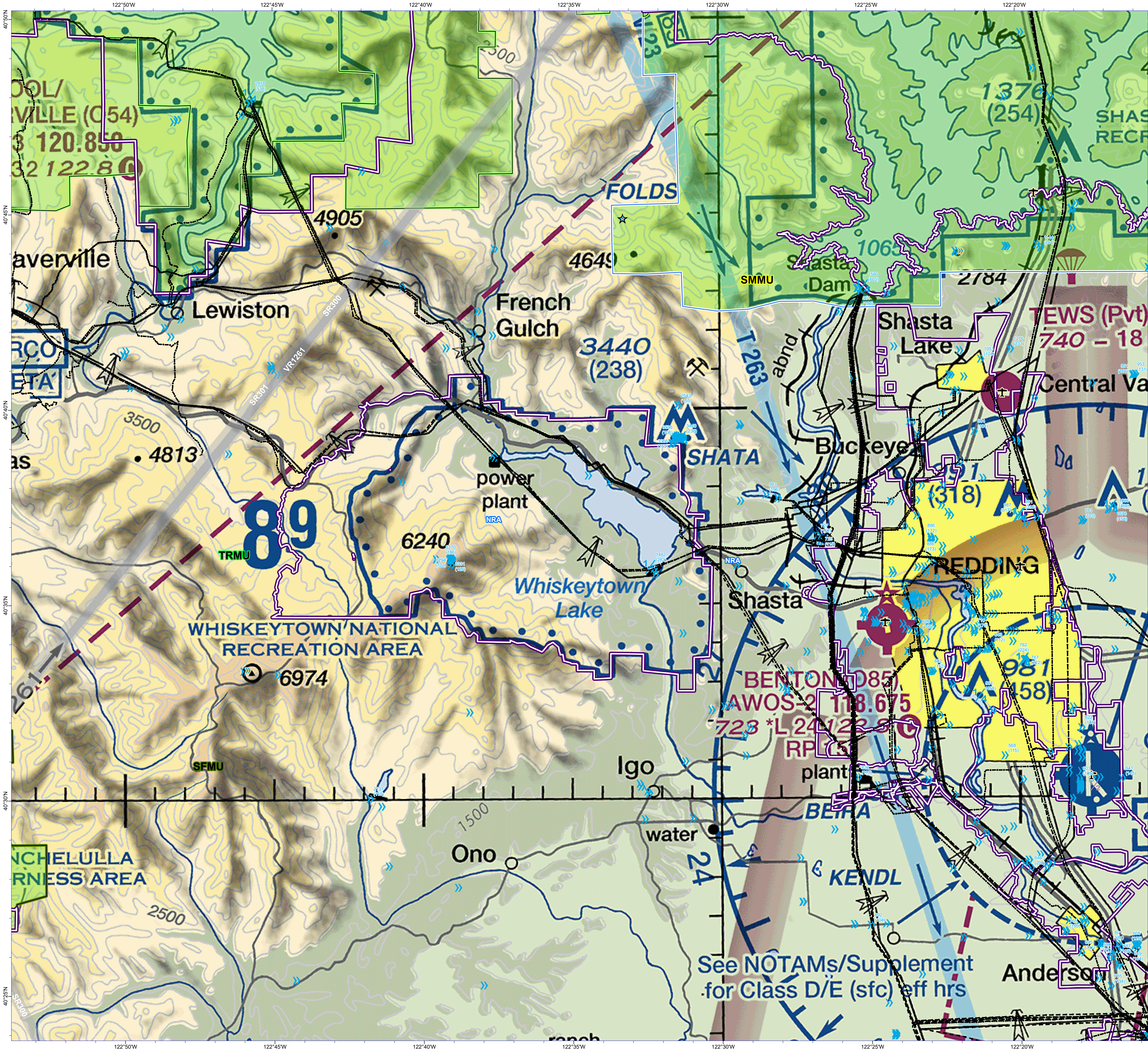


Shasta - Trinity National Forest
 AVIATION HAZARD 2023
 Whiskeytown - NRA



- ★ FS Jetton Area
- ★ Tower
- >>> 50 - 200
- >>> 201 - 14006
- >>> 1/4
- >>> 1/2
- + Airport
- Powerline
- Military Training Route
- Direct Protection Areas
- Administrative Forest
- Jetton
- National Recreation Area
- South Fork Management Unit
- Trinity River Management Unit

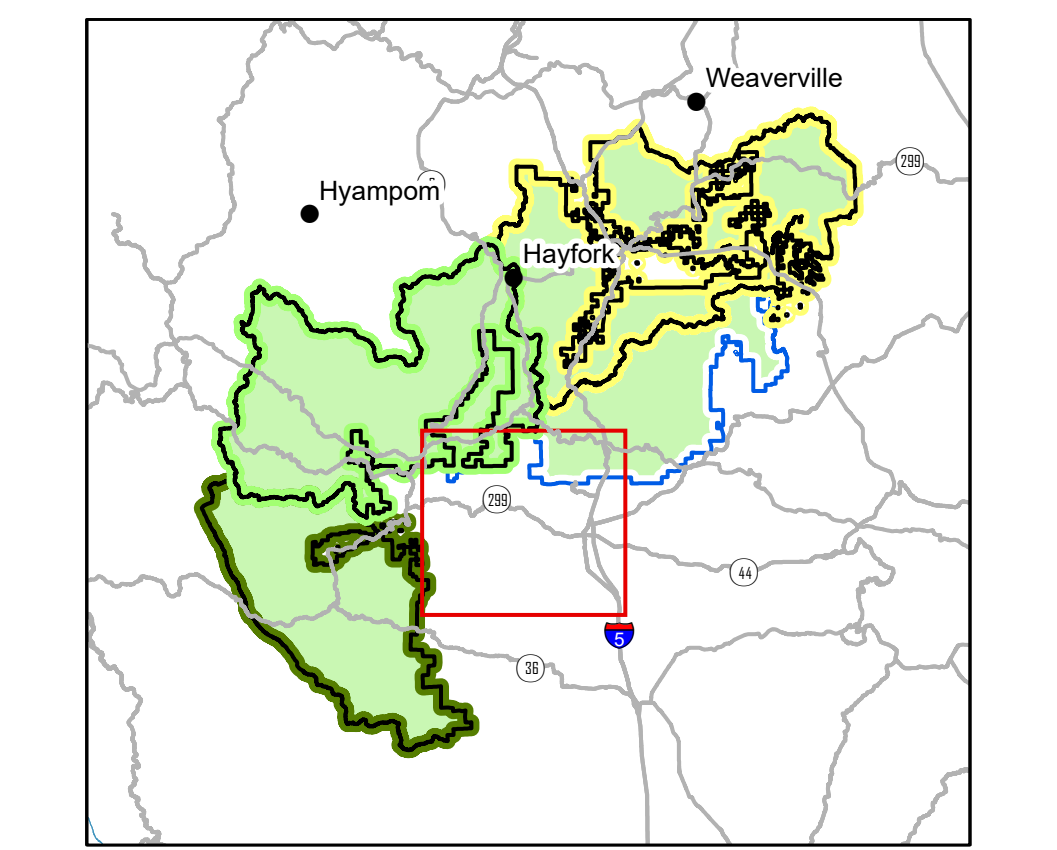
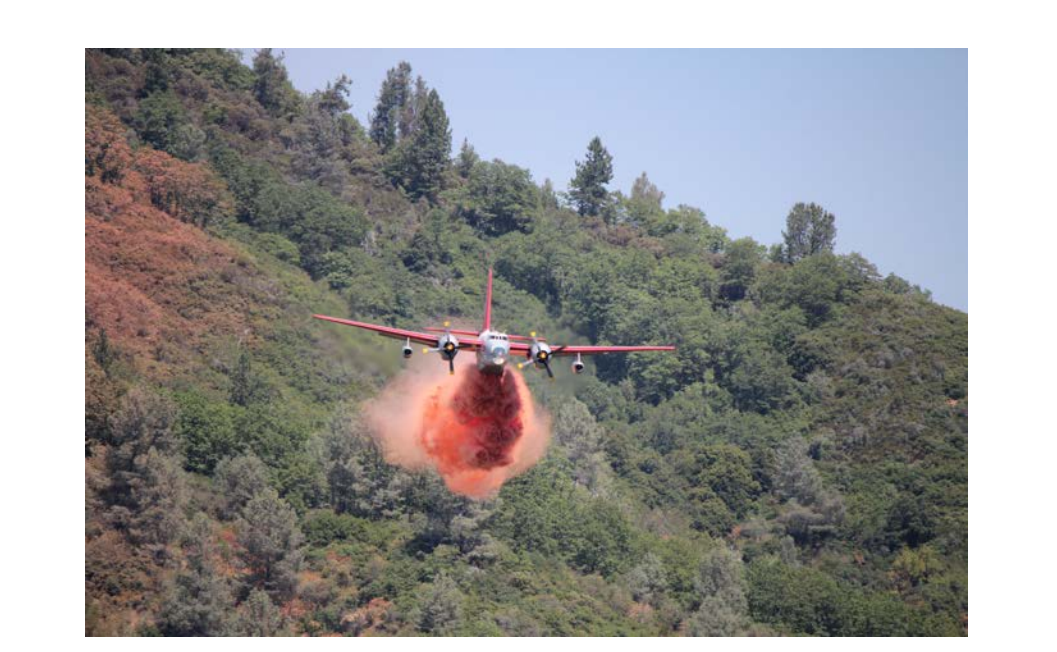
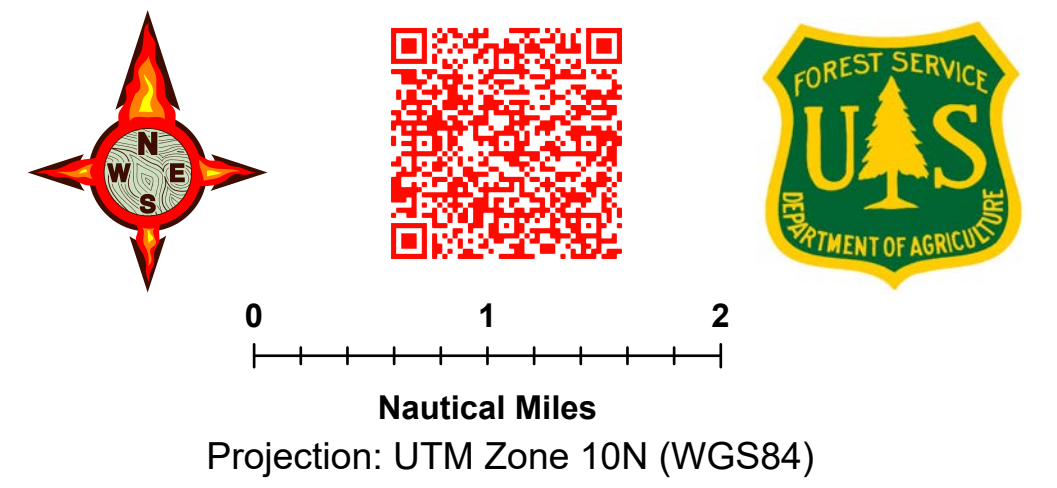
JETTON	NAME	LATITUDE	LONGITUDE	BEARING	NAUTICAL MI
1	Summit Mtn 6758	40° 7.987' N	122° 47.230' W	224	UNIT
NOTES					
Avoid North facing slopes					
2	Wells Creek Pk 4836	40° 12.433' N	122° 51.842' W	234	UNIT
NOTES					
Avoid North facing slopes					
3	Knob Peak 4819	40° 26.283' N	122° 55.294' W	260.6	UNIT
NOTES					
Avoid N facing slopes plus Caution MTR 2 mi E					
4	Mammoth Butte 4217	40° 44.858' N	122° 33.229' W	315.8	UNIT
NOTES					
Avoid streams					
5	Dog Creek Mtn 4488	40° 53.515' N	122° 28.554' W	340	UNIT
NOTES					
Caution ridge-top trail					
6	San Crk Mtn 4379	40° 53.200' N	122° 10.953' W	13.34	UNIT
NOTES					
Avoid limestone outcrops					
7	CalFire - Buckhorn	40° 34.778' N	122° 06.552' W	53	UNIT
NOTES					
Caution - Powerlines to West and South					

*Bearing/Nautil Miles calculated from RDD VOR



NOTE:
 This warning map is provided for reference only and is NOT intended to be inclusive of all known hazards. POWERLINES are approximate locations.

DISCLAIMER:
 The Forest Service uses the most current and complete data available. GIS data and product accuracy may vary. Data may be developed from sources of differing accuracy, accurate only at certain scales, based on modeling or interpretation, incorporate while being created or revised. Using GIS products for purposes other than those for which they were created, may yield inaccurate or misleading results.
 The Forest Service reserves the right to correct, update, modify, or replace, GIS products without notification. For more information, contact:
 Shasta-Trinity National Forest
 3644 Artoch Parkway
 Redding, CA 96002



See NOTAMs/Supplement
 for Class D/E (sfc) eff hrs