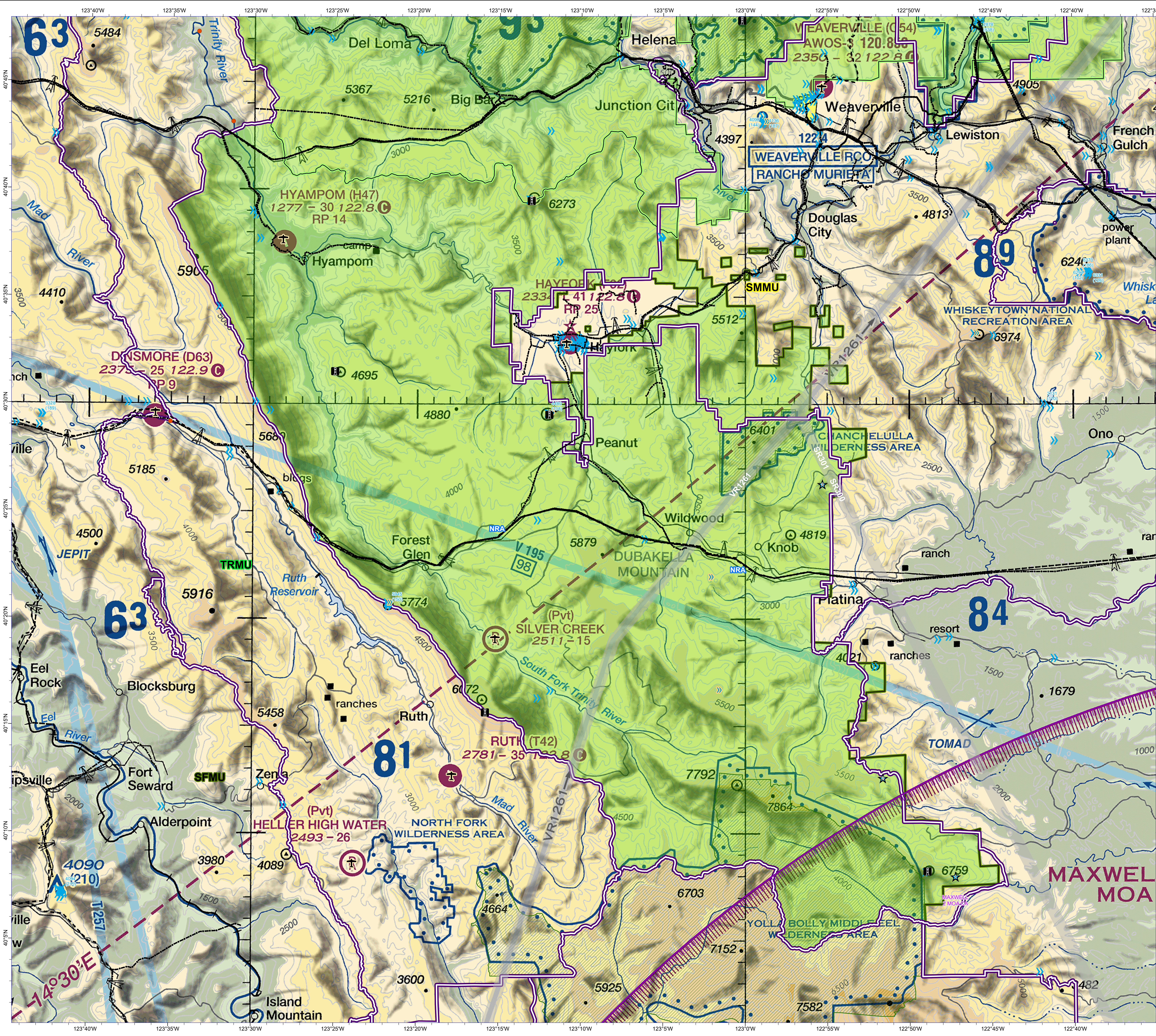


Shasta - Trinity National Forest AVIATION HAZARD 2024 SFMU



- Firelookout
- FS Jettison Area
- Aerial cable
- Tower
- 50-200
- 201-14006
- Airport
- Powerline
- Military Training Route
- Direct Protection Areas
- Existing Wilderness
- Administrative Forest
- Jettison
- A: MOA
- National Recreation Area
- South Fork Management Unit
- Trinity River Management Unit

JETTISON	NAME	LATITUDE	LONGITUDE	BEARING	NAUTICAL MI
1	Southhead Mtn 6258	40° 7.987' N	122° 47.236' W	224	UNIT 32
NOTES					
Avalon North facing slopes					
ELEVATION 6300 SFMU					
2	Wells Creek Pk 4816	40° 12.433' N	122° 53.642' W	234	UNIT 31.7
NOTES					
Avalon North facing slopes					
ELEVATION 5300 SFMU					
3	Knob Peak 4819	40° 26.283' N	122° 55.294' W	260.6	UNIT 28.95
NOTES					
Avalon N facing slopes plus Caution MTR 2 mi E					
ELEVATION 4800 SFMU					
4	Mammoth Butte 4217	40° 44.858' N	122° 33.229' W	319.8	UNIT 18.03
NOTES					
Avalon streams					
ELEVATION 4100 NRA					
5	Dog Creek Mtn 4488	40° 53.515' N	122° 28.554' W	345	UNIT 23.85
NOTES					
Caution ridge-top trail					
ELEVATION 4300 NRA					
6	Shn Crk Mtn 4329	40° 53.200' N	122° 10.953' W	13.34	UNIT 22.08
NOTES					
Avalon limestone outcrops					
ELEVATION 4400 NRA					
7	CalFire - Burkhorn	40° 34.778' N	122° 05.552' W	53	UNIT 10
NOTES					
Caution - Powerlines to West and South					
ELEVATION >3000 UNIT CDF					

*Bearing/Nautical Miles calculated from RDD YOR



NOTE:
This warning map is provided for reference only and is NOT intended to be inclusive of all known hazards. POWERLINES are approximate locations.

DISCLAIMER:
The Forest Service uses the most current and complete data available. GIS data and product accuracy may vary. Data may be developed from sources of differing accuracy, accurate only at certain scales, based on modeling or interpretation, incorporate while being created or revised. Using GIS products for purposes other than those for which they were created, may yield inaccurate or misleading results.
The Forest Service reserves the right to correct, update, modify, or replace, GIS products without notification. For more information, contact:
Shasta-Trinity National Forest
3644 Artoch Parkway
Redding, CA 96002

