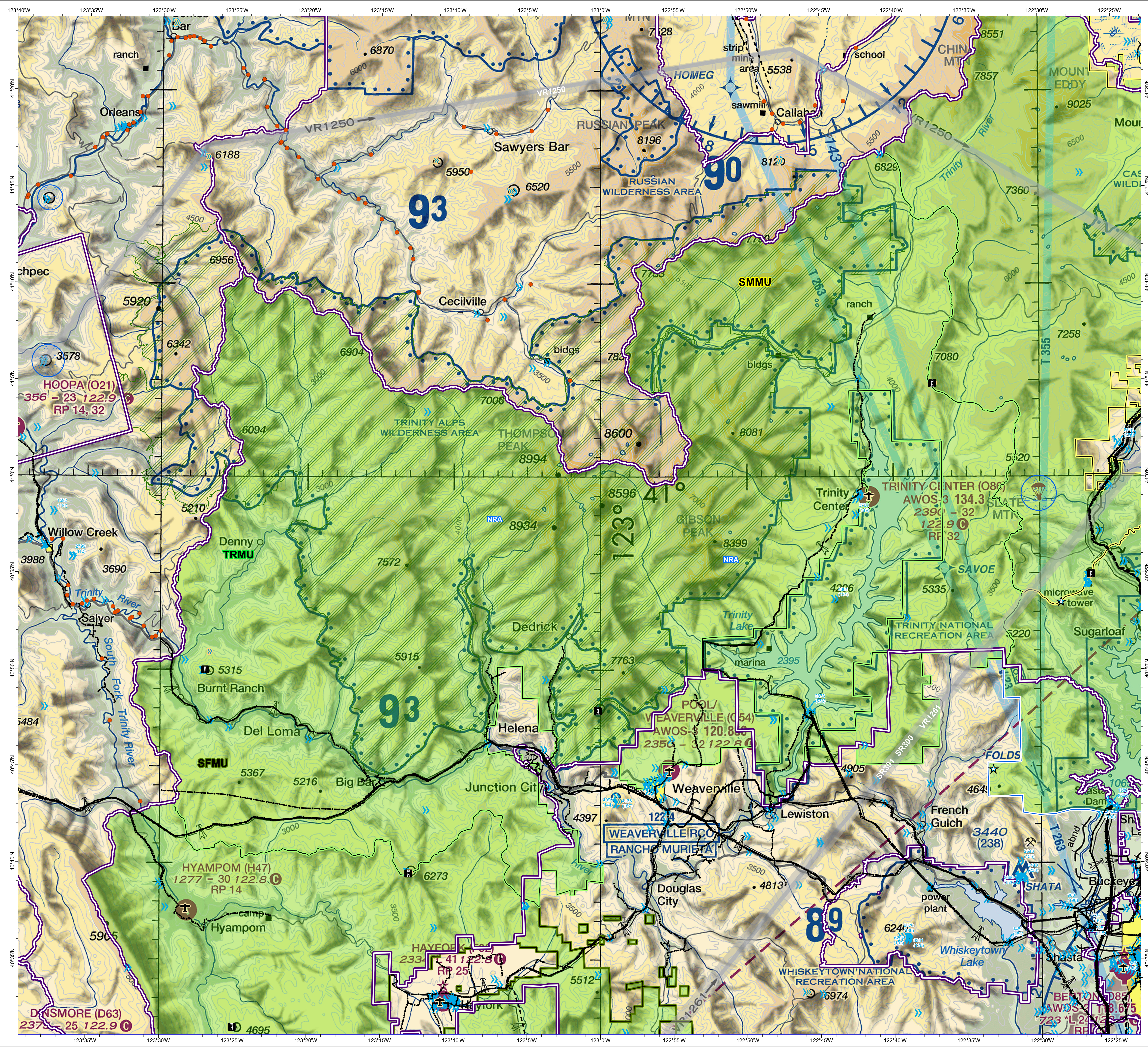


# Shasta - Trinity National Forest AVIATION HAZARD 2024 TRMU



- Firelookout
- FS Jettison Area
- Aerial cable
- Tower
- 50 - 200
- 201 - 14006
- Airport
- Powerline
- Military Training Route
- Direct Protection Areas
- Existing Wilderness
- Administrative Forest
- Jettison
- Peak
- National Recreation Area
- South Fork Management Unit
- Shasta McCloud Management Unit
- Trinity River Management Unit

ID	NAME	LATITUDE	LONGITUDE	BEARING	NAUTICAL MI
1	Southland Mtn 6758	40° 7.987' N	122° 47.236' W	224	UNIT 32
NOTES					
Awoos North facing slopes		6300		SFMU	
2	Wells Creek Pk 4816	40° 12.433' N	122° 51.642' W	234	UNIT 11.7
NOTES					
Awoos North facing slopes		5300		SFMU	
3	French Peak 4819	40° 26.283' N	122° 55.294' W	260.6	UNIT 28.95
NOTES					
Awoos N facing slopes plus Caution MTR 2 mi E		4800		SFMU	
4	Mammoth Butte 4217	40° 44.858' N	122° 33.229' W	319.8	UNIT 18.03
NOTES					
Awoos streams		4100		NRA	
5	Dog Creek Mtn 4488	40° 53.515' N	122° 28.554' W	345	UNIT 23.85
NOTES					
Caution ridge-top trail		4300		UNIT	
6	Sah Crk Mtn 4379	40° 53.200' N	122° 30.953' W	333.4	UNIT 22.68
NOTES					
Awoos limestone outcrops		4400		NRA	
7	Carlfire - Burkhorn	40° 34.778' N	122° 05.552' W	51	UNIT 10
NOTES					
Caution - Powerlines to West and South		>3000		UNIT COF	

\*Bearing/Nautil Miles calculated from RDD VOR



**NOTE:**  
This warning map is provided for reference only and is NOT intended to be inclusive of all known hazards. POWERLINES are approximate locations.

**DISCLAIMER:**  
The Forest Service uses the most current and complete data available. GIS data and product accuracy may vary. Data may be developed from sources of differing accuracy, accurate only at certain scales, based on modeling or interpretation, incorporate while being created or revised. Using GIS products for purposes other than those for which they were created, may yield inaccurate or misleading results.  
The Forest Service reserves the right to correct, update, modify, or replace, GIS products without notification. For more information, contact:  
Shasta-Trinity National Forest  
3644 Arsoch Parkway  
Redding, CA 96002

