

# INCIDENT ACTION PLAN LINE INCIDENT

CA-BDF-012520  
P5 R7XF (0512)

Monday



OPERATIONAL PERIOD

9/30/2024 0700

to

10/1/2024 0700





# INCIDENT OBJECTIVES (ICS 202)

<b>1. Incident Name:</b>  Line	<b>2. Operational Period:</b>	Date From: 9/30/2024 Time From: 0700	Date To: 10/1/2024 Time To: 0700
--------------------------------------	-------------------------------	---	-------------------------------------

**3. Objective(s):**

**Strategic Objectives**

A full suppression strategy is to be implemented on the Line Incident. Values at risk associated to the incident include human safety, private and public property and associated improvements, electrical power infrastructure, and cultural values. Minimize acres burned on all lands by utilizing effective and efficient strategies and tactics while maintaining safety first

**Leaders Intent**

Work effectively with cooperative partners towards a common goal of protecting values in a safe and efficient manner. All incident assigned personnel should be prepared to take the appropriate actions regarding:

- Professional behavior, conduct timely and effective communications.
- Personal safety and safety of others, including driving slowly, safely, and defensively.
- Implementation of tactics that offer a high probability of success.
- Manage fatigue by taking breaks and maintaining work rest cycles.

**Management Objectives**

- Provide for emergency personnel and public safety at all times while maintaining safe work practices to minimize threats and safeguarding the citizens and resources of San Bernardino County.
- Minimize damage to structures, private and public property, and other improvements in the fire area.
- Ensure fire line suppression repair needs are addressed.
- Protect natural, cultural, and heritage resources.
- Continue to foster and maintain positive relationships with all local cooperators and stakeholders.
- Ensure coordinated, timely and accurate release of public information.
- Ensure costs are aligned with mission priorities.

**General Situational Awareness:**

North of: Highland/Mentone/Yucaipa

South of: 18 to mitigate the threat of fire to the communities of Running Springs, Arrow Bear, Green Lake and Big Bear

East of: 330 to mitigate fire spread to the communities West Highlands, Del Rosa, Arrowhead Farms, and Verdomont



West of: 38 to mitigate fire spread east to the communities of Angeles Oak, Mountain View, and Forest Falls

**5. Site Safety Plan Required?** Yes  No

**Approved Site Safety Plan(s) Located at:**

**6. Incident Action Plan**

<input checked="" type="checkbox"/> ICS 203	<input type="checkbox"/> ICS 215A	<input checked="" type="checkbox"/> ICS 205 A	<input type="checkbox"/>
<input checked="" type="checkbox"/> ICS 204	<input checked="" type="checkbox"/> ICS 220	<input checked="" type="checkbox"/> Training Message	<input type="checkbox"/>
<input checked="" type="checkbox"/> ICS 205	<input type="checkbox"/> Facility Maps	<input checked="" type="checkbox"/> Travel Map	<input type="checkbox"/>
<input checked="" type="checkbox"/> ICS 206	<input checked="" type="checkbox"/> Weather Forecast	<input checked="" type="checkbox"/> Demob Plan	<input type="checkbox"/> County Health Message
<input checked="" type="checkbox"/> ICS 208	<input checked="" type="checkbox"/> Fire Behavior	<input checked="" type="checkbox"/> Finance Message	<input checked="" type="checkbox"/> ICS 214

<b>7. Prepared By:</b> Mike Dunkel	<b>Position/Title:</b> PSC	<b>Signature:</b> 
<b>8. Approved by Incident Commander:</b>	Chris Fogle	<b>Signature:</b> 

## ORGANIZATION ASSIGNMENT LIST (ICS 203)

<b>1. Incident Name:</b>		<b>2. Operational Period: Date From:</b> 9/30/2024		<b>Date To:</b> 10/1/2024	
<b>Line</b>		<b>Time From:</b> 0700		<b>Time To:</b> 0700	
<b>3. Incident Commander(s) and Command Staff:</b>			<b>7. Operation Section:</b>		
IC/UC's	Fogle /Courtright(t) / Munsey/ Jones	Operations	M. Lamont		
Deputy	Norm Walker / Martin Serna	PlanningOps	Dan Diaz / Cody Canning (t)		
Safety Officer	Sherman /Colonelli / Harker	Night Ops	Luis Gomez		
Information Officer	Kramer / Munsey / Poole	Staging Area			
Liaison Officer	Klar / Willis / Summy / Mercado(t)	Division/Group			
<b>4. Agency/Organization Representatives:</b>		Division/Group	C	Nathan Lopez	
Agency/Organization	Name	Division/Group	P	Gordon Meyer	
BDF AA	D. Harrison	Division/Group			
BDF AA (t)	Jamahl Butler	Division/Group	R	Robert Hoyle	
BDF AREP	Mike Ho	Division/Group	S	Justin Foy	
BDF AREP	Mike Nobles	Division/Group			
BDF AREP	Annamarie Santana	Division/Group	T	Anthony Reposa	
BDF FMO	Josh Boehm	Division/Group	U	J. Digiando	
CAL OES	T. Rouhotas	Division/Group	Structure Group	TBD	
SBCo Fire AREP	M. Bixler	Division/Group	Night	TBD	
CAL FIRE BDU AREP	Shane Littlefield	<b>Branch</b>	<b>Supp Repair</b>	<b>Sandborg</b>	
Lead READ	Odell Tucker	Division/Group	Repair Group	J. McAhren (t)	
		Division/Group	Hazard Tree Grp	C. Wade	
		Division/Group			
		Division/Group			
		<b>Branch</b>			
		Division/Group			
<b>5. Planning Section:</b>		Division/Group			
Chief	Gary Bishop / Mike Dunkel (t)	Division/Group			
HSRP	Pamela Spearow (t)	Division/Group			
Resource Unit	Shennum / Brock / Paige (t)	Division/Group			
Situation Unit	Greg Breyer	<b>Branch</b>			
SCKN	Barrera / Dorse (t) / Kuhn (t)/ Anolin(t)	Division/Group			
Demobilization Unit	Jason Kammann (t)	Division/Group			
GISS	Matt Bilby (t)	Division/Group			
FBAN	John Fisher	Division/Group			
IMET	K. Fleegel	Division/Group			
Training Tech Spec	Dani McMillon / Manny Martinez (t)	<b>Air Operations Branch</b>	<b>Director:</b>	<b>Galen Young</b>	
ITTS	Wiskow / Jumper	Air Support Group Supervisor	John Steadman		
FOBS	D. Surprise	Air Tactical Group Supervisor			
<b>6. Logistics Section</b>		Helibase Manager			
Chief	Lajoie / O'Leary / Sheets				
Supply Unit	Irland / J. Lamont	<b>8. Finance/Administration Section:</b>			
Facilities Unit	Maria Torres / Denise Kusnir	Chief	Debbie York		
Ground Support Unit	J. Mock / D. Seawright	Time Unit	Dalton Rutherford		
Communications Unit	Dunnick / Holden (t) / Jeckell	PTRC	Jennifer Anderson		
Medical Unit	E. Nelson / S. Hamilton	Comp/Claims Unit	Russell Kraus		
Food Unit	Coleen Gallagher	Cost Unit	Saundra Rappahahn		
Security	Chris George	EQTR	Merriam Aranzanso / Scott Robinson		
<b>Prepared By: Name:</b>	Joel Shennum	<b>Position/Title:</b>	RESL	<b>Signature:</b>	<i>Joel Shennum</i>
<b>ICS 203</b>		<b>Date/Time:</b>	9/29/2024 2300 hours		



# INCIDENT Weather Forecast



**FORECAST NO:** 22  
**PREDICTION FOR:** 24 Hour  
**SHIFT DATE:** 9/30/24 (0700) – 10/1/24 (0700)  
**FORECAST ISSUED:** 9/29/24 @ 1700

**NAME OF FIRE:** Line  
**UNIT:** CA-BDF-012520  
**SIGNED:** Kari Fleegel *[Signature]*  
**Incident Meteorologist** kari.fleegel@noaa.gov

### WEATHER DISCUSSION:

Our steady warmup with more unstable air begins today, with increasing mixing heights and ventilation. Mixing heights will be around twice as high as yesterday! Temperatures will be around 5 degrees warmer today, and another 2 degrees warmer on Tuesday. Tuesday should be the warmest day of the week, with only a slow moderation to temperatures through the rest of the week. Winds will be slightly higher today, gusts of 15 to 20 mph in the afternoon. Relative humidity values will fall into the 13 to 22 percent range once again. Clouds will increase Wednesday, with a 5% chance of mainly dry thunderstorms in the afternoon mainly east of the fire. Gusty winds will be possible if a storm develops near the fire.

### WEATHER FORECAST:

**WEATHER:** Clear with areas of smoke. Elevated smoke to move north.

**TEMPERATURES:**

Above 5000 feet:	Max: 77-90	Min: 44-57
Below 5000 feet:	Max: 87-95	Min: 55-65

**HUMIDITY:**

Above 5000 feet:	Min: 13-20%	Max: 20-30%
Below 5000 feet:	Min: 20-30%	Max: 30-40%

**20 FT WINDS:**

**RIDGETOP -**

0700-0900:	East to southeast 3-6 mph Gust 8-10 mph
0900-2000:	South to southwest 8-12 mph Gust 18-24 mph
2000-0700:	East to northeast 3-6 mph Gust 8-12 mph

**SLOPE/VALLEY -**

0700-1000:	Northeast to east 3-6 mph Gust 8-10 mph
1000-1900:	Southerly/upcanyon 5-10 mph Gust 15-20 mph
1900-0700:	East to northeast 2-5 mph Gust 6-8 mph

**MIXING HEIGHTS:** 9500-1500 ft AGL

### OUTLOOK FOR TUESDAY:

Very warm and continued dry. Partly cloudy. High temperatures: 79-92 higher elevations and 89-97 lower elevations. Low temperatures: 46-59 higher elevations and 58-69 lower elevations. Minimum relative humidity: 14-21% higher elevations and 21-30% lower elevations. Maximum relative humidity: 20-30% higher elevations and 28-38% lower elevations. Ridgetop winds: East 3-6 MPH Gust 8-10 MPH, becoming south to southeast 6-10 MPH Gust 14-19 MPH in the afternoon. Slope/valley winds: northeast to east 2-5 MPH Gust 6-8 MPH, becoming southerly/upcanyon 5-9 MPH Gust 12-17 MPH in the afternoon and evening.



## Local Wx Observations

<https://www.weather.gov/lox/snooper?latlon=34.17349,-117.028151,6,Line&net=999#>

## FIRE BEHAVIOR FORECAST

<b>FORECAST NUMBER:</b> 23	<b>TYPE OF FIRE:</b> Wildland
<b>FIRE NAME:</b> LINE	<b>OPERATIONAL PERIOD:</b> 09/30 (0700) - 10/01 (0700)
<b>DATE ISSUED:</b> September 29, 2024	<b>TIME ISSUED:</b> 1900
<b>UNIT:</b> CA-BDF-012520	<b>SIGNED:</b> /s/ John Fisher, FBAN

**WEATHER SUMMARY: The mixing height is increasing, allowing for more ventilation of the fire.**

**Temp:** Above 5000' Max 77-90 Min 44-57 Below 5000' Max 87-95 Min 55-65

**RH:** Above 5000' Min 13-20 Max 20-30 Below 5000' Min 20-30 Max 30-40

**Wind:**

Ridgetop ESE 3-6 G 8-10 until 0900, then S 8-12 G 18-24. Returning to NE to E around 1900

Slope/Valley E to NE 3-6 G 8-10 until 1000, then upcanyon 5-10 G 15-20. Returning to ENE around 2000.

**FIRE BEHAVIOR INPUTS**

Values in the table are for ignitions outside of current perimeter.

Fuel Type	Rate of Spread (ROS)	Flame Length	Spotting Dist.	Fire Danger Indices (Percentile)	
<i>...If your work area includes -</i>	(CH/HR = FPM)	Feet	Miles	ERC	BI
<b>GS2</b> – Moderate Load, Dry Climate Grass-Shrub	24-60	5-15	0.2	80 <sup>th</sup>	80 <sup>th</sup>
<b>SH5</b> – High Load, Dry Climate Shrub	71-106	13-18	0.6	Based on Converse RAWS	
<b>TU5</b> – Heavy Forest Litter with a Shrub or Small Tree Understory	3-6	1-8	0.5		

**FIRE BEHAVIOR NARRATIVE**

**GENERAL:**

Increased spotting and column development. Active surface fire in areas with remaining heat. Areas with alignment of slope and wind will cause sustained runs. Spotting will occur where ember cast can land in a receptive fuel bed.

**Fuels:** Fuels are above their seasonal ERC averages and will continue to trend higher as drying continues. Smaller fuels have been dried by poor overnight recoveries. 100-hour fuels are much drier than average.

**Complex Terrain:** Large complex drainages of Bear Creek, the Santa Ana River, and numerous tributaries channel winds and create potential for rapid changes in fire behavior. Roll out in steep drainages has potential to cause continued fire spread.

**SPECIFIC:**

**Division C:** Isolated heat interior. Expect residual heat to continue to smolder and be active, but not pose threats to control lines.

**Divisions P and R:** largest areas of remaining activity are in the Bear Creek and Siberia Creek drainages. Short runs will occur where alignment occurs. Frequent rock outcroppings and lighter fuels will work to inhibit fire spread.

**Division S and T:** Fire will begin to push east and north as upcanyon winds increase. Expect long duration alignment runs. Use caution about diurnal wind shifts and strong downslope winds later in the evening and in the early morning.

**Division U:** Heat remains along the open line NW of Angelus Oaks. Short range spotting will continue where wind pushes ember cast. Alignment in the afternoon will increase fire behavior and lead to active burning.


**Initial Attack:** Smaller fuels are very receptive and ready to burn. Identify locations where alignment conditions will occur and perform a fire environment evaluation before engaging.

**AIR OPERATIONS:**

Smoke and haze in the morning in low lying areas and canyons, otherwise clear air.

**SAFETY:** Complex terrain with intersecting drainages can lead to rotating columns and extreme fire behavior.



ASSIGNMENT LIST (ICS 204 WF)						CONTROLLED UNCLASSIFIED INFORMATION//BASIC			
1. Incident Name:			2. Operational Period:			3. Branch		Division	
Line			Date From:	09/30/24	Date To:	10/01/24		P	
			Time From:	0700	Time To:	0700			
4. Operations Personnel:						Page 1 of 1		Papa	
Operations Section Chief: <b>M. Lamont</b>				Night Ops: <b>Luis Gomez</b>					
Branch Director:				Branch Safety:					
Division/Group Supervisor: <b>Gordon Meyer</b>				Air Attack:					
5. Resources Assigned:		** Resources Below in Bold are 12 Hour **							
Resource Identifier	ALS	LWD	Leader	Personnel	Request #	Hours	Reporting Location		
IHC ARROYO GRANDE 35005		10/10	<b>HOLMES, BEN</b>	21	<b>C-35005</b>	<b>0700-1900</b>	SNOW VALLEY ICP		
HC1 GOLDEN EAGLES		10/10	<b>VILLEGAS, ROBERT</b>	21	<b>C-35006</b>	<b>0700-1900</b>	SNOW VALLEY ICP		
HC2 MNF CNMI 32 (C-144)		10/7	<b>BLAS, JAMES</b>	21	<b>C-35002</b>	<b>0700-1900</b>	SNOW VALLEY ICP		
HC2 MNF CNMI 36 (C-145)		10/7	<b>PALACIOS, DAVID</b>	20	<b>C-35003</b>	<b>0700-1900</b>	SNOW VALLEY ICP		
ENG3 S/T OES 1880C (E-266)		10/3	ALVARADO, VINCE	22	E-35201	0700-0700	SNOW VALLEY ICP		
ENG3 INF 322		10/12	<b>LICHFIELD, OLIVER</b>	5	<b>E-35227</b>	<b>0700-1900</b>	SNOW VALLEY ICP		
ENG3 CNF E333		10/12	<b>MERCADO, VICTOR</b>	5	<b>E-35228</b>	<b>0700-1900</b>	SNOW VALLEY ICP		
T/F XIM 6110 (OES TYPE 6) (E-265)		10/2	<b>PARHAN, BRIAN</b>	16	<b>E-35200</b>	<b>0700-1900</b>	SNOW VALLEY ICP		
ENG6 NPS E680		10/12	<b>WILLIAMS, DAVIN</b>	4	<b>E-35222</b>	<b>0700-1900</b>	SNOW VALLEY ICP		
ENG6 FIRE SUPPORT E-35220		10/12	<b>HARRIS, DATON</b>	3	<b>E-35220</b>	<b>0700-1900</b>	SNOW VALLEY ICP		
ENG6 PVT CAMPBELL		10/12	<b>HOOVER, MARIE</b>	3	<b>E-35224</b>	<b>0700-1900</b>	SNOW VALLEY ICP		
EMPF SOLOSKI	x	10/6	<b>SOLOSKI, TED</b>	1	<b>O-650</b>	<b>0700-1900</b>	SNOW VALLEY ICP		
EMTF FROST (O-76)		10/4	<b>FROST, MEREDITH</b>	1	<b>O-35027</b>	<b>0700-1900</b>	SNOW VALLEY ICP		
EMTF FLEENOR		10/4	<b>FLEENOR, WILL</b>	1	<b>O-735</b>	<b>0700-1900</b>	SNOW VALLEY ICP		
REMS CHV REMS 1	x	10/3	<b>SOTO, RICK</b>	4	<b>O-235</b>	<b>0700-1900</b>	SNOW VALLEY ICP		
AMBULANCE 2 (AMB2) E-30154				2	<b>E-30154</b>	<b>0700-1900</b>	SNOW VALLEY ICP		
EXCA PVT STRICKLAND (E-531)		10/3	<b>STRICKLAND, JASON</b>	1	<b>E-35188</b>	<b>0700-1900</b>	SNOW VALLEY ICP		
6. Work Assignments:									
Monitor and patrol, mop up, and improve handlines. Go direct where safe to do so near the P/R break. Backhaul all trash and equipment.									
7. Special Instructions:									
No firing operations unless approved by Operations. Backhaul all trash and equipment. Adhere to the 25 mph speed limit on highway 330.									
8. Communications:									
Name	Ch	Function	Rx Freq	Rx Tone	Tx Freq	Tx Tone	Mode	Notes	
NIFC C8	1	COMMAND	169.5375	(T2) 123.0	164.7125	(T2) 123.0	A	KELLER PEAK	
NIFC T4	7	TACTICAL	166.7250	(T2) 123.0	166.7250	(T2) 123.0	A		
CDFG/G15	14	A/G TAC	159.2775	(T16) 192.8	159.2775	(T16) 192.8	A		
CALCORD	15	TACTICAL	156.0750	(T6) 156.7	156.0750	(T6) 156.7	A		
AIRGUARD	16	EMERGENCY	168.6250	0.0	168.6250	(T1) 110.9	A		
9. Prepared by: Name:			Brad Paige		RESL		Signature: 		
ICS 204		Date/Time: 9/29/2024 2200			Personnel Count: 151				



# ASSIGNMENT LIST (ICS 204 WF)

CONTROLLED UNCLASSIFIED  
INFORMATION//BASIC

<b>1. Incident Name:</b>	<b>2. Operational Period:</b>	<b>3. Branch</b>
<b>Line</b>	Date From: 09/30/24    Date To: 10/01/24 Time From: 0700    Time To: 0700	<b>Division</b>
		<b>R</b>
		<b>Page 1 of 1    Romeo</b>

<b>4. Operations Personnel:</b>	
Operations Section Chief: <b>M. Lamont</b>	Night Ops: <b>Luis Gomez</b>
Branch Director:	Branch Safety:
Division/Group Supervisor: <b>Robert Hoyle</b>	Air Attack:

<b>5. Resources Assigned:</b>							
** Resources Below in Bold are 12 Hour **							
Resource Identifier	ALS	LWD	Leader	Personnel	Request #	Hours	Reporting Location
<b>HC1 DIAMOND MOUNTAIN</b>		<b>10/6</b>	<b>DOBYNS, DAN</b>		<b>C-35000</b>	<b>0700-1900</b>	<b>SNOW VALLEY ICP</b>
<b>HC2 CNA CREW 513</b>		<b>10/6</b>	<b>ARROYO, JUAN</b>	23	<b>C-62.1</b>	<b>0700-1900</b>	<b>SNOW VALLEY ICP</b>
<b>T/F ANF 1601 (E-11)</b>		<b>10/7</b>	<b>MARTINEZ, RONNIE</b>	15	<b>E-35032</b>	<b>0700-1900</b>	<b>SNOW VALLEY ICP</b>
<b>ENG3 CA-ENF E314</b>		<b>10/3</b>	<b>MOLDIN, BEN</b>		<b>E-40</b>	<b>0700-1900</b>	<b>SNOW VALLEY ICP</b>
<b>ENG3 CA-PNF E315</b>		<b>10/2</b>	<b>SIMONI, CASEY M</b>	5	<b>E-554</b>	<b>0700-1900</b>	<b>SNOW VALLEY ICP</b>
<b>ENG3 CA-PNF E322</b>		<b>10/2</b>	<b>MCCREA, DAVID</b>	5	<b>E-30078</b>	<b>0700-1900</b>	<b>SNOW VALLEY ICP</b>
<b>WTT2 ENF WT221</b>		<b>10/12</b>	<b>DAYTON, TYLER</b>	2	<b>E-35061</b>	<b>0700-1900</b>	<b>SNOW VALLEY ICP</b>
<b>WTT2 SHF WT246</b>		<b>10/12</b>	<b>THOMAS RIGGINS</b>	2	<b>E-35065</b>	<b>0700-1900</b>	<b>SNOW VALLEY ICP</b>
<b>DOZ2 PVT CALANCHINI (E-191)</b>		<b>10/11</b>	<b>CALANCHINI, VIC</b>	4	<b>E-35114</b>	<b>0700-1900</b>	<b>SNOW VALLEY ICP</b>
<b>DOZ2 PVT WILBER E-30055</b>		<b>9/30</b>	<b>WILSON, KEVIN</b>	2	<b>E-30055</b>	<b>0700-1900</b>	<b>SNOW VALLEY ICP</b>
<b>DOZ2 PVT LEPAGE (E-223)</b>		<b>10/8</b>	<b>BARKLEY, ROB</b>	2	<b>E-35125</b>	<b>0700-1900</b>	<b>SNOW VALLEY ICP</b>
<b>HEQB URRUTIA</b>		<b>10/6</b>	<b>URRUTIA, FELIX</b>	1	<b>O-692</b>	<b>0700-1900</b>	<b>SNOW VALLEY ICP</b>
<b>REMS RENO</b>	x	<b>10/2</b>	<b>RENO</b>	4	<b>O-237</b>	<b>0700-1900</b>	<b>SNOW VALLEY ICP</b>
<b>EMPF DUNN (O-57)</b>	x	<b>9/30</b>	<b>DUNN, DAN M</b>	1	<b>O-35021</b>	<b>0700-1900</b>	<b>SNOW VALLEY ICP</b>
<b>EMTF BRENMAN (O-684)</b>		<b>10/6</b>	<b>BRENMAN, KYLE</b>	1	<b>O-35193</b>	<b>0700-1900</b>	<b>SNOW VALLEY ICP</b>
<b>EMTF STOCKTON</b>		<b>10/7</b>	<b>STOCKTON, KATHRYN</b>	1	<b>O-668</b>	<b>0700-1900</b>	<b>SNOW VALLEY ICP</b>

**6. Work Assignments:**  
Monitor, patrol, mop up, and improve handlines. Work to improve Helispots as proposed. Construct both direct and indirect handline. Utilize aircraft as needed to keep fire in check. Backhaul trash and equipment when appropriate to do so.


**7. Special Instructions:**  
No firing operations unless approved by Operations. Backhaul all trash and equipment. Adhere to the 25 mph speed limit on highway 330.

<b>8. Communications</b>								
Name	Ch	Function	Rx Freq	Rx Tone	Tx Freq	Tx Tone	Mode	Notes
NIFC C8	1	COMMAND	169.5375	(T2) 123.0	164.7125	(T2) 123.0	A	KELLER PEAK
NIFC T5	8	TACTICAL	166.7750	(T2) 123.0	166.7750	(T2) 123.0	A	
CDFAG15	14	A/G TAC	159.2775	(T16) 192.8	159.2775	(T16) 192.8	A	
CALCORD	15	TACTICAL	156.0750	(T6) 156.7	156.0750	(T6) 156.7	A	
AIRGUARD	16	EMERGENC	168.6250	0.0	168.6250	(T1) 110.9	A	

<b>9. Prepared by: Name:</b>	Brad Paige	RESL	Signature:
<b>ICS 204</b>	Date/Time: 9/29/2024 2200	Personnel Count: 68	







ASSIGNMENT LIST (ICS 204 WF)						CONTROLLED UNCLASSIFIED INFORMATION//BASIC		
1. Incident Name:			2. Operational Period:			3. Branch		Division
Line			Date From:	09/30/24	Date To:	10/01/24		U
			Time From:	0700	Time To:	0700		
4. Operations Personnel:						Page 1 of 1		Uniform
Operations Section Chief: <b>M. Lamont</b>				Night Ops:		<b>Luis Gomez</b>		
Branch Director:				Branch Safety:				
Division/Group Supervisor: <b>J. Digiando</b>				Air Attack:				
5. Resources Assigned:		<b>** Resources Below in Bold are 12 Hour **</b>						
Resource Identifier	ALS	LWD	Leader	Personnel	Request #	Hours	Reporting Location	
HC1 MILL CREEK IHC		10/4	<b>GRUNEWALD, JUSTIN</b>	19	<b>C-142</b>	<b>0700-1900</b>	<b>SNOW VALLEY ICP</b>	
HC2 DALTON		10/11	<b>DIMACULANGAN, LEONARD</b>	20	<b>C-35004</b>	<b>0700-1900</b>	<b>SNOW VALLEY ICP</b>	
HC2 HARRISON CANYON		10/11	<b>CARLISLE, DURK</b>	21	<b>C-35011</b>	<b>0700-1900</b>	<b>SNOW VALLEY ICP</b>	
ENG3 S/T BDF 6606C		10/5	<b>ESPOSITC, BRANDON</b>	27	<b>E-565</b>	<b>0700-1900</b>	<b>SNOW VALLEY ICP</b>	
ENG3 S/T TNF 4660C		10/12	<b>HUFF, ZACHORY</b>	27	<b>E-35157</b>	<b>0700-1900</b>	<b>SNOW VALLEY ICP</b>	
ENG3 SQF E321		10/13	<b>CANTAR-TORRES, CES</b>	5	<b>E-35229</b>	<b>0700-1900</b>	<b>SNOW VALLEY ICP</b>	
ENG3 SQF E321		10/13	<b>CANTAR-TORRES, CES</b>	5	<b>E-35229</b>	<b>0700-1900</b>	<b>SNOW VALLEY ICP</b>	
ENG3 SNF E332		10/12	<b>SABOL, STEVE</b>	5	<b>E-35225</b>	<b>0700-1900</b>	<b>SNOW VALLEY ICP</b>	
WTT2 NV MOAPA VALLEY		10/12	<b>LIVINGSTON, ANNA</b>	2	<b>E-35231</b>	<b>0700-1900</b>	<b>SNOW VALLEY ICP</b>	
WTT2 NATIONAL FIRE SUPPORT T12		10/12	<b>ADAMS, JESSE</b>	2	<b>E-35230</b>	<b>0700-1900</b>	<b>SNOW VALLEY ICP</b>	
REMS ROUGH COUNTY	x	10/5	<b>ROUGH COUNTRY</b>	2	<b>O-582</b>	<b>0700-1900</b>	<b>SNOW VALLEY ICP</b>	
EMPF BRODBECK		10/2	<b>BRODBECK, MICHAEL</b>	1	<b>O-84</b>	<b>0700-1900</b>	<b>SNOW VALLEY ICP</b>	
EMTF ADAMS		10/1	<b>ADAMS, ELISE</b>	1	<b>O-79</b>	<b>0700-1900</b>	<b>SNOW VALLEY ICP</b>	
EMTF GRIGSBY		10/7	<b>GRIGSBY, TASH</b>	1	<b>O-663</b>	<b>0700-1900</b>	<b>SNOW VALLEY ICP</b>	
SOFR HUBBY		10/13	<b>HUBBY, BOBBY</b>	1	<b>O-35071</b>	<b>0700-1900</b>	<b>SNOW VALLEY ICP</b>	
6. Work Assignments:								
Monitor and patrol, improve handlines as necessary. Go direct with handline construction where safe to do so. Prepare proposed firing plan for section 21								
7. Special Instructions:								
No firing operations unless approved by Operations. Backhaul all trash and equipment. Adhere to the 25 mph speed limit on highway 330.								
8. Communications								
Name	Ch	Function	Rx Freq	Rx Tone	Tx Freq	Tx Tone	Mode	Notes
NIFC C8	1	COMMAND	169.5375	(T2) 123.0	164.7125	(T2) 123.0	A	KELLER PEAK
NIFC T6	9	TACTICAL	168.2500	(T2) 123.0	168.2500	(T2) 123.0	A	
CDFA/G15	14	A/G TAC	159.2775	(T16) 192.8	159.2775	(T16) 192.8	A	
CALCORD	15	TACTICAL	156.0750	(T6) 156.7	156.0750	(T6) 156.7	A	
AIRGUARD	16	EMERGENCY	168.6250	0.0	168.6250	(T1) 110.9	A	
9. Prepared by: Name:			Brad Paige		RESL		Signature: 	
ICS 204		Date/Time: 9/29/2024 2200			Personnel Count: 139			






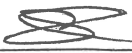
ASSIGNMENT LIST (ICS 204 WF)						CONTROLLED UNCLASSIFIED INFORMATION//BASIC		
1. Incident Name:			2. Operational Period:			3. Branch	Division	
Line			Date From:	09/30/24	Date To:	10/01/24	Supp Repair	
			Time From:	0700	Time To:	0700		
4. Operations Personnel:						Page 1 of 4		
Operations Section Chief: M. Lamont			Night Ops:		Luis Gomez			
Branch Director: Sandborg			Branch Safety:					
Division/Group Supervisor: J. McAhren (t)			Air Attack:					
5. Resources Assigned:		** Resources Below in Bold are 12 Hour **						
Resource Identifier	ALS	LWD	Leader	Personnel	Request #	Hours	Reporting Location	
HC2 CNA CREW 515			<b>MOCETTINI, MARK</b>	23	<b>C-62.3</b>	<b>0700-1900</b>	<b>SNOW VALLEY ICP</b>	
HC2 CNA CREW 516			<b>JOHNSON, MOGNAS</b>	23	<b>C-62.4</b>	<b>0700-1900</b>	<b>SNOW VALLEY ICP</b>	
HC2 CNA CREW 517			<b>GALLI, ALBERT</b>	23	<b>C-63.1</b>	<b>0700-1900</b>	<b>SNOW VALLEY ICP</b>	
HC2 CNA CREW 518			<b>EMORY, GENE</b>	23	<b>C-63.2</b>	<b>0700-1900</b>	<b>SNOW VALLEY ICP</b>	
HC2 CNA CREW 519			<b>GALVIN, JUSTIN</b>	23	<b>C-63.3</b>	<b>0700-1900</b>	<b>SNOW VALLEY ICP</b>	
HC2 CNA CREW 520			<b>RUBICABA, ROBERTO</b>	23	<b>C-63.4</b>	<b>0700-1900</b>	<b>SNOW VALLEY ICP</b>	
HC2 PVT REFOREST C-137			<b>DURAN, ERNEST</b>	20	<b>C-137</b>	<b>0700-1900</b>	<b>SNOW VALLEY ICP</b>	
HC2 PVT MOSQUEDA C-138		10/9	<b>HERNADEZ, NICOLAS</b>	20	<b>C-138</b>	<b>0700-1900</b>	<b>SNOW VALLEY ICP</b>	
ENG6 CO 6532		10/5	<b>BASILLA, NATHAN</b>	3	<b>E-72</b>	<b>0700-1900</b>	<b>SNOW VALLEY ICP</b>	
ENG6 G E FORESTRY		10/12	<b>TOVAR, ARMANDO</b>	3	<b>E-35221</b>	<b>0700-1900</b>	<b>SNOW VALLEY ICP</b>	
DOZ2 PVT CECIL E-190			<b>CECIL, JUSTIN</b>	2	<b>E-190</b>	<b>0700-1900</b>	<b>SNOW VALLEY ICP</b>	
DOZ2 PVT WILDFIRE E-192		10/11	<b>ROSSE, DAVID</b>	2	<b>E-192</b>	<b>0700-1900</b>	<b>SNOW VALLEY ICP</b>	
DOZ2 PVT CUTTING EDGE (E-197)		10/2	<b>DAVIS, MIKE</b>	2	<b>E-35282</b>	<b>0700-1900</b>	<b>SNOW VALLEY ICP</b>	
DOZ2 PVT CLICKS E-199			<b>CLICK, SCOTT</b>	2	<b>E-199</b>	<b>0700-1900</b>	<b>SNOW VALLEY ICP</b>	
DOZ2 PVT BLACK KNIGHT (E-203)		10/3	<b>RISSLER, CAMERON</b>	2	<b>E-35118</b>	<b>0700-1900</b>	<b>SNOW VALLEY ICP</b>	
DOZ2 PVT LARUE (E-205)		10/10	<b>LARUE, DAN</b>	2	<b>E-35120</b>	<b>0700-1900</b>	<b>SNOW VALLEY ICP</b>	
DOZ2 PVT SILLER (E-215)		10/1	<b>METTLES, DUSTIN</b>	2	<b>E-35121</b>	<b>0700-1900</b>	<b>SNOW VALLEY ICP</b>	
DOZ2 PVT MORRISON E-216		10/3	<b>MORRISON, JOHN</b>	1	<b>E-216</b>	<b>0700-1900</b>	<b>SNOW VALLEY ICP</b>	
6. Work Assignments:								
Utilize READs to ensure work begins on approved lines. Ensure that work conforms to suppression repair plan and guidelines. Backhaul trash and equipment when appropriate.								
7. Special Instructions:								
Adhere to the 25 mph speed limit on highway 330.								
8. Communications								
Name	Ch	Function	Rx Freq	Rx Tone	Tx Freq	Tx Tone	Mode	Notes
NIFC C8	1	COMMAND	169.5375	(T2) 123.0	164.7125	(T2) 123.0	A	KELLER PEAK
VTAC 13	10	TACTICAL	158.7375	(T6) 156.7	158.7375	(T6) 156.7	A	SUPP REP/HAZ TREE
CDFA/G15	14	A/G TAC	159.2775	(T16) 192.8	159.2775	(T16) 192.8	A	
CALCORD	15	TACTICAL	156.0750	(T6) 156.7	156.0750	(T6) 156.7	A	
AIRGUARD	16	EMERGENCY	168.6250	0.0	168.6250	(T1) 110.9	A	
9. Prepared by: Name:		Brad Paige			RESL			Signature: 
ICS 204		Date/Time: 9/29/2024 2200			Personnel Count: 199			


<b>ASSIGNMENT LIST (ICS 204 WF)</b>						CONTROLLED UNCLASSIFIED INFORMATION//BASIC		
<b>1. Incident Name:</b>			<b>2. Operational Period:</b>			<b>3. Branch</b>	<b>Division</b>	
<b>Line</b>			Date From:	09/30/24	Date To:	10/01/24	<b>Supp Repair</b>	
			Time From:	0700	Time To:	0700		<b>Repair Group</b>
<b>4. Operations Personnel:</b>						Page 2 of 4		
Operations Section Chief: <b>M. Lamont</b>			Night Ops:		<b>Luis Gomez</b>			
Branch Director: <b>Sandborg</b>			Branch Safety:					
Division/Group Supervisor: <b>J. McAhren (t)</b>			Air Attack:					
<b>5. Resources Assigned:</b>						<b>** Resources Below in Bold are 12 Hour **</b>		
Resource Identifier	ALS	LWD	Leader	Personnel	Request #	Hours	Reporting Location	
DOZ2 PVT LEESVILLE E-217		10/3	RUBINI, NATE	1	E-217	0700-1900	SNOW VALLEY ICP	
DOZ2 PVT DUNLAP E-222		10/1	POINTDEXTER, REVER	2	E-222	0700-1900	SNOW VALLEY ICP	
WTS1 PVT NORTHSTATE E-244		10/13	BARTON, JOHN	1	E-244	0700-1900	SNOW VALLEY ICP	
WTS1 PVT CM CONST E-245		10/6	EICHINGER, STACIE	1	E-245	0700-1900	SNOW VALLEY ICP	
WTS2 PVT DUSTBUSTERS 2		10/12	HOLT, GREG	1	E-35023	0700-1900	SNOW VALLEY ICP	
WTS1 PVT USA RANCH E-248			SALAZAR, CORNELIO	1	E-248	0700-1900	SNOW VALLEY ICP	
GRD PRO-DUMP (E-516)			NORTON, TRACY	1	E-35171	0700-1900	SNOW VALLEY ICP	
GRD PVT CODY R LAMB (E-517)		10/2	REEVES, KIRK	1	E-35172	0700-1900	SNOW VALLEY ICP	
GRD GREGORY EQUIP. (E-518)			GREGORY, STEVE	4	E-35173	0700-1900	SNOW VALLEY ICP	
GRD PVT BUSHEY (E-566)		10/7	BUSHEY, ANDREW	2	E-35175	0700-1900	SNOW VALLEY ICP	
EXCA PVT CECIL (E-520)		10/9	BUTTS, ERNIST	2	E-35178	0700-1900	SNOW VALLEY ICP	
EXCA PVT BKB (E-522)		10/11	COOKSON, SAM	2	E-35180	0700-1900	SNOW VALLEY ICP	
EXCA PVT WYATT (E-523)		10/9	FUKUDA, ADRIAN	2	E-35181	0700-1900	SNOW VALLEY ICP	
EXCA PVT GENERAL LEE (E-524)		10/15	TODD, JOSEPH	1	E-35182	0700-1900	SNOW VALLEY ICP	
EXCA PVT WILBER (E-525)		10/2	WILBER, RANDY	2	E-35183	0700-1900	SNOW VALLEY ICP	
EXCA PVT WARREN (E-526)		10/11	GINDERA, CHRIS	2	E-35184	0700-1900	SNOW VALLEY ICP	
EXCA PVT FISKS (E-527)			CHARD, JOSH	2	E-35185	0700-1900	SNOW VALLEY ICP	
EXCA PVT TRESSLERS (E-528)			TRESSLER, ARTIE	2	E-35186	0700-1900	SNOW VALLEY ICP	
<b>6. Work Assignments:</b>								
Utilize READs to ensure work begins on approved lines. Ensure that work conforms to suppression repair plan and guidelines.								
Backhaul trash and equipment when appropriate.								
<b>7. Special Instructions:</b>								
Adhere to the 25 mph speed limit on highway 330.								
<b>8. Communications</b>								
Name	Ch	Function	Rx Freq	Rx Tone	Tx Freq	Tx Tone	Mode	Notes
NIFC C8	1	COMMAND	169.5375	(T2) 123.0	164.7125	(T2) 123.0	A	KELLER PEAK
VTAC 13	10	TACTICAL	158.7375	(T6) 156.7	158.7375	(T6) 156.7	A	SUPP REP/HAZ TREE
CDFA/G15	14	A/G TAC	159.2775	(T16) 192.8	159.2775	(T16) 192.8	A	
CALCORD	15	TACTICAL	156.0750	(T6) 156.7	156.0750	(T6) 156.7	A	
AIRGUARD	16	EMERGENCY	168.6250	0.0	168.6250	(T1) 110.9	A	
<b>9. Prepared by: Name:</b>		Brad Paige			RESL			Signature: 
<b>ICS 204</b>		Date/Time: 9/29/2024 2200			Personnel Count: 30			



ASSIGNMENT LIST (ICS 204 WF)						CONTROLLED UNCLASSIFIED INFORMATION//BASIC		
1. Incident Name:			2. Operational Period:			3. Branch	Division	
Line			Date From:	09/30/24	Date To:	10/01/24	Supp Repair	
			Time From:	0700	Time To:	0700		
4. Operations Personnel:						Page 3 of 4		
Operations Section Chief: M. Lamont			Night Ops: Luis Gomez					
Branch Director: Sandborg			Branch Safety:					
Division/Group Supervisor: J. McAhren (t)			Air Attack:					
5. Resources Assigned:		** Resources Below in Bold are 12 Hour **						
Resource Identifier	ALS	LWD	Leader	Personnel	Request #	Hours	Reporting Location	
EXCA PVT ADAMES (E-529)		10/12	ROBERT RODRIGUEZ	2	E-35187	0700-1900	SNOW VALLEY ICP	
EXCA PVT STRICKLAND (E-531)		10/3	STRICKLAND, JASON	1	E-35188	0700-1900	SNOW VALLEY ICP	
EXCA PVT NORTHSTATE (E-533)		10/2	FARIA, SCOTT	2	E-35189	0700-1900	SNOW VALLEY ICP	
EXCA PVT IRON (E-20307)		10/1	FRASIER, ZANE	1	E-35019	0700-1900	SNOW VALLEY ICP	
EXCA PVT GENERAL (E-20310)		10/11	TODD, JEREMY	2	E-35021	0700-1900	SNOW VALLEY ICP	
EXCA PVT ABSOLUTE E-20311		10/11	HANFT, KURT	1	E-35017	0700-1900	SNOW VALLEY ICP	
CHIP PVT BAYWORTH (E-452)		10/5	BAY, SHAWN	3	E-35168	0700-1900	SNOW VALLEY ICP	
CHIP PVT MOUNTAIN AIR (E-489)			MADDEN, ROBERT	2	E-35030	0700-1900	SNOW VALLEY ICP	
CHIP PVT CECIL 35020		10/10	PALMER, DENNIS	3	E-35020	0700-1900	SNOW VALLEY ICP	
TFLD(T) DUBOISE			DUBOISE, KENNETH	1	O-35009	0700-1900	SNOW VALLEY ICP	
TFLD(T) PEDERSON			PEDERSON, AARON	1	O-685	0700-1900	SNOW VALLEY ICP	
HEQB WEIDNER			WEIDNER, ANTHONY	1	O-646	0700-1900	SNOW VALLEY ICP	
HEQB MURPHY			MURPHY, KYLE	1	O-567	0700-1900	SNOW VALLEY ICP	
HEQB HERNANDEZ		10/4	HERNANDEZ, NICK	1	O-576	0700-1900	SNOW VALLEY ICP	
HEQB WILLIAMS			WILLIAMS, WILLIAM	1	O-291	0700-1900	SNOW VALLEY ICP	
FSRS LOPEZ (O-565)		10/4	LOPEZ, CALE	1	O-35070	0700-1900	SNOW VALLEY ICP	
EMPF FAABORG	x		FAABORG, RICHARD	1	O-648	0700-1900	SNOW VALLEY ICP	
EMTF HARLA (O-664)		10/8	HARLA, ANTHONY	1	O-35185	0700-1900	SNOW VALLEY ICP	
6. Work Assignments:								
Utilize READs to ensure work begins on approved lines. Ensure that work conforms to suppression repair plan and guidelines. Backhaul trash and equipment when appropriate.								
7. Special Instructions:								
Adhere to the 25 mph speed limit on highway 330.								
8. Communications								
Name	Ch	Function	Rx Freq	Rx Tone	Tx Freq	Tx Tone	Mode	Notes
NIFC C8	1	COMMAND	169.5375	(T2) 123.0	164.7125	(T2) 123.0	A	KELLER PEAK
VTAC 13	10	TACTICAL	158.7375	(T6) 156.7	158.7375	(T6) 156.7	A	SUPP REP/HAZ TREE
CDFA/G15	14	A/G TAC	159.2775	(T16) 192.8	159.2775	(T16) 192.8	A	
CALCORD	15	TACTICAL	156.0750	(T6) 156.7	156.0750	(T6) 156.7	A	
AIRGUARD	16	EMERGENCY	168.6250	0.0	168.6250	(T1) 110.9	A	
9. Prepared by: Name:		Brad Paige			RESL			Signature: 
ICS 204		Date/Time: 9/29/2024 2200			Personnel Count: 26			



ASSIGNMENT LIST (ICS 204 WF)						CONTROLLED UNCLASSIFIED INFORMATION//BASIC			
1. Incident Name:			2. Operational Period:			3. Branch		Division	
Line			Date From:	09/30/24	Date To:	10/01/24		Supp Repair	Hazard Tree Grp
			Time From:	0700	Time To:	0700			
4. Operations Personnel:						Page 1 of 2			
Operations Section Chief: <b>M. Lamont</b>			Night Ops: <b>Luis Gomez</b>						
Branch Director: <b>Sandborg</b>			Branch Safety:						
Division/Group Supervisor: <b>C. Wade</b>			Air Attack:						
5. Resources Assigned:		<b>** Resources Below in Bold are 12 Hour **</b>							
Resource Identifier	ALS	LWD	Leader	Personnel	Request #	Hours	Reporting Location		
ENG6 ME E6217		10/5	<b>BERUBE, BRAD</b>	4	<b>E-85</b>	<b>0700-1900</b>	<b>SNOW VALLEY ICP</b>		
DOZ2 PVT TRESSLER'S E-201		10/9	<b>SIMMONS, MORGAN</b>	2	<b>E-201</b>	<b>0700-1900</b>	<b>SNOW VALLEY ICP</b>		
WTT1 PVT NORTHSTATE (E-169)		10/10	<b>CHANDLER, GARY</b>	1	<b>E-35029</b>	<b>0700-1900</b>	<b>SNOW VALLEY ICP</b>		
WTT2 GOMEZ WT21		10/10	<b>GOMEZ, FABIAN</b>	2	<b>E-35064</b>	<b>0700-1900</b>	<b>SNOW VALLEY ICP</b>		
WTT2 TNF WT 234		10/11	<b>MISNER, AUSTIN</b>	2	<b>E-35063</b>	<b>0700-1900</b>	<b>SNOW VALLEY ICP</b>		
WTS1 PVT AMERICAN E-247		10/2	<b>LOWE, ROBERT</b>	1	<b>E-247</b>	<b>0700-1900</b>	<b>SNOW VALLEY ICP</b>		
WTS1 PVT AMERICAN E-251		10/2	<b>LOWE, AARON</b>	1	<b>E-251</b>	<b>0700-1900</b>	<b>SNOW VALLEY ICP</b>		
WTS2 PVT DUST BUSTERS E-258		10/10	<b>JANDRO, SCOTT</b>	1	<b>E-258</b>	<b>0700-1900</b>	<b>SNOW VALLEY ICP</b>		
FMOD PVT TREE GUYS (O-220)		10/1	<b>FREUND, ABRAHAM</b>	2	<b>O-35095</b>	<b>0700-1900</b>	<b>SNOW VALLEY ICP</b>		
FMOD PVT TREE GUYS O-318		10/1	<b>DADILLA, JOE</b>	2	<b>O-318</b>	<b>0700-1900</b>	<b>SNOW VALLEY ICP</b>		
FMOD PVT TIMBERSMITH (O-322)		10/3	<b>DENIZ, RYAN</b>	2	<b>O-35099</b>	<b>0700-1900</b>	<b>SNOW VALLEY ICP</b>		
FMOD PVT TIMBERSMITH O-323		10/3		1	<b>O-323</b>	<b>0700-1900</b>	<b>SNOW VALLEY ICP</b>		
MAST PVT BUSHY (E-435)		10/7	<b>SNETHEN, BEN</b>	2	<b>E-35165</b>	<b>0700-1900</b>	<b>SNOW VALLEY ICP</b>		
MAST PVT MORRISON E-237		10/6	<b>CALL, RYAN</b>	2	<b>E-237</b>	<b>0700-1900</b>	<b>SNOW VALLEY ICP</b>		
MAST PVT MORRISON E-238		10/6	<b>MORRISON, MATT</b>	2	<b>E-238</b>	<b>0700-1900</b>	<b>SNOW VALLEY ICP</b>		
MAST PVT LEE (E-97)		10/11	<b>JERIS TENNYHILL</b>	2	<b>E-35038</b>	<b>0700-1900</b>	<b>SNOW VALLEY ICP</b>		
MAST PVT GROTEGUTH (E-239)		10/3	<b>GORTEGUTH, JAKE</b>	2	<b>E-35164</b>	<b>0700-1900</b>	<b>SNOW VALLEY ICP</b>		
MAST PVT LAP CONTR E-230		10/4	<b>MOSS, CYLE</b>	2	<b>E-230</b>	<b>0700-1900</b>	<b>SNOW VALLEY ICP</b>		
6. Work Assignments:									
Work with READs to ensure that work begins on approved lines. Ensure that work conforms to suppression repair plan and guidelines. Backhaul trash and equipment when appropriate.									
7. Special Instructions:									
Adhere to the 25 mph speed limit on highway 330.									
8. Communications									
Name	Ch	Function	Rx Freq	Rx Tone	Tx Freq	Tx Tone	Mode	Notes	
NIFC C8	1	COMMAND	169.5375	(T2) 123.0	164.7125	(T2) 123.0	A	KELLER PEAK	
VTAC 13	10	TACTICAL	158.7375	(T6) 156.7	158.7375	(T6) 156.7	A		
CDFA/G15	14	A/G TAC	159.2775	(T16) 192.8	159.2775	(T16) 192.8	A		
CALCORD	15	TACTICAL	156.0750	(T6) 156.7	156.0750	(T6) 156.7	A		
AIRGUARD	16	EMERGENCY	168.6250	0.0	168.6250	(T1) 110.9	A		
9. Prepared by: Name:			Brad Paige		RESL		Signature: 		
ICS 204		Date/Time: 9/29/2024 2200			Personnel Count: 33				

ASSIGNMENT LIST (ICS 204 WF)						CONTROLLED UNCLASSIFIED INFORMATION//BASIC			
1. Incident Name:			2. Operational Period:			3. Branch		Division	
Line			Date From:	09/30/24	Date To:	10/01/24		Supp Repair	Hazard Tree Grp
			Time From:	0700	Time To:	0700			
4. Operations Personnel:						Page 2 of 2			
Operations Section Chief: <b>M. Lamont</b>			Night Ops: <b>Luis Gomez</b>						
Branch Director: <b>Sandborg</b>			Branch Safety:						
Division/Group Supervisor: <b>C. Wade</b>			Air Attack:						
5. Resources Assigned:		<b>** Resources Below in Bold are 12 Hour **</b>							
Resource Identifier	ALS	LWD	Leader	Personnel	Request #	Hours	Reporting Location		
<b>MAST PVT RUSTY E-231</b>							<b>SNOW VALLEY ICP</b>		
<b>MAST PVT FUNES (E-436)</b>		10/8	<b>MICKOW, ALEX</b>	2	<b>E-35166</b>	<b>0700-1900</b>	<b>SNOW VALLEY ICP</b>		
<b>MAST PVT NORTHSTATE (E-456)</b>		10/6	<b>HILL, JT</b>	2	<b>E-35167</b>	<b>0700-1900</b>	<b>SNOW VALLEY ICP</b>		
<b>GRD PVT BUSHEY (E-566)</b>		10/7	<b>BUSHEY, ANDREW</b>	2	<b>E-35175</b>	<b>0700-1900</b>	<b>SNOW VALLEY ICP</b>		
<b>GRD PVT LAP (E-567)</b>		10/9	<b>AYALA, JESUS</b>	2	<b>E-35176</b>	<b>0700-1900</b>	<b>SNOW VALLEY ICP</b>		
<b>GRD2 PVT PONYTAIL (E-568)</b>		10/8	<b>CLOVIS HOOPER</b>	2	<b>E-35177</b>	<b>0700-1900</b>	<b>SNOW VALLEY ICP</b>		
<b>FEL1 - CECIL LOGGING (E-535)</b>		10/11	<b>FLUEGGE, DONALD</b>	2	<b>E-35154</b>	<b>0700-1900</b>	<b>SNOW VALLEY ICP</b>		
<b>EXCA PVT NORTHSTATE (E-521)</b>			<b>VAUGHN, COLETON</b>	2	<b>E-35179</b>	<b>0700-1900</b>	<b>SNOW VALLEY ICP</b>		
<b>FEL1 - MCKELLAR E-537</b>		10/3	<b>MCKELLAR, DOUG</b>	2	<b>E-35156</b>	<b>0700-1900</b>	<b>SNOW VALLEY ICP</b>		
<b>FORW PVT BFC (E-538)</b>		10/6	<b>ROBERTS, LANCE</b>	2	<b>E-35190</b>	<b>0700-1900</b>	<b>SNOW VALLEY ICP</b>		
<b>FORW PVT BFC (E-539)</b>		10/4	<b>SAX, GARRET</b>	2	<b>E-35192</b>	<b>0700-1900</b>	<b>SNOW VALLEY ICP</b>		
<b>FORW PVT BFC (E-540)</b>		10/8	<b>LOVELL, CORY</b>	2	<b>E-35194</b>	<b>0700-1900</b>	<b>SNOW VALLEY ICP</b>		
<b>FORW PVT BFC (E-541)</b>		10/4	<b>PERRY, ADAM</b>	2	<b>E-35193</b>	<b>0700-1900</b>	<b>SNOW VALLEY ICP</b>		
<b>FORW PVT BFC (E-542)</b>		10/8	<b>MAC ARTHUR, RYAN</b>	1	<b>E-35191</b>	<b>0700-1900</b>	<b>SNOW VALLEY ICP</b>		
<b>FORW PVT BFC (E-543)</b>		10/5	<b>REED, JARED</b>	2	<b>E-35275</b>	<b>0700-1900</b>	<b>SNOW VALLEY ICP</b>		
<b>HEQB(T) MARTIN</b>		9/28	<b>MARTIN, MICHAEL</b>	1	<b>O-259</b>	<b>0700-1900</b>	<b>SNOW VALLEY ICP</b>		
<b>EMPF IHDE</b>	x	10/8	<b>IHDE, BRANDON</b>	1	<b>O-649</b>	<b>0700-1900</b>	<b>SNOW VALLEY ICP</b>		
<b>EMTF DURAN</b>							<b>SNOW VALLEY ICP</b>		
6. Work Assignments:									
Work with READs to ensure that work begins on approved lines. Ensure that work conforms to suppression repair plan and guidelines. Backhaul trash and equipment when appropriate.									
7. Special Instructions:									
Adhere to the 25 mph speed limit on highway 330.									
8. Communications									
Name	Ch	Function	Rx Freq	Rx Tone	Tx Freq	Tx Tone	Mode	Notes	
NIFC C8	1	COMMAND	169.5375	(T2) 123.0	164.7125	(T2) 123.0	A	KELLER PEAK	
VTAC 13	10	TACTICAL	158.7375	(T6) 156.7	158.7375	(T6) 156.7	A		
CDFA/G15	14	A/G TAC	159.2775	(T16) 192.8	159.2775	(T16) 192.8	A		
CALCORD	15	TACTICAL	156.0750	(T6) 156.7	156.0750	(T6) 156.7	A		
AIRGUARD	16	EMERGENCY	168.6250	0.0	168.6250	(T1) 110.9	A		
9. Prepared by: Name:			Brad Paige		RESL		Signature: 		
ICS 204		Date/Time: 9/29/2024 2200			Personnel Count: 29				



<b>Lookouts</b> <b>Communications</b> <b>Escape Routes</b> <b>Safety Zones</b>	<b>Line Incident</b> 09/30/2024 – 10/01/24  <b>SAFETY MESSAGE</b>
---	--

## IWI-INCIDENT WITHIN AN INCIDENT

*With persistent hazards such as steep terrain, remain vigilant with your knowledge and preparedness to call in an incident within an incident. ARE YOU READY?*

- *Discuss the process with your crew.*
- *Know the communication plan to request assistance.*
- *Teach the procedure to others in case it is YOU that needs help.*
- *Consider your position on the fire relative to reflex time of resources.*
- *Be clear about your needs when initiating an IWI.*

## WHAT IS THE PROBABILITY OF SUCCESS?

- *When you are developing your tactical plan honestly weigh the probability of successfully completing your objectives.*
- *Do you have the time, resources, logistical support, and supervision needed for the assignment?*
- *Do you have all elements of your safety plan in place?*
- *Are the risks associated with the assignment worth the gain?*
- *When your probability of success falls below 75% it should be a red flag to consider an alternative plan.*

*CIIMT 11 Safety Officers Tom Sherman, Nick Colonelli, Dan Harker*

# ICS 205 - INCIDENT RADIO COMMUNICATIONS PLAN

**1. Incident Name:** \_\_\_\_\_ **2. Date/Time Prepared** \_\_\_\_\_ **3. Operational Period:** \_\_\_\_\_

**Line** \_\_\_\_\_ **Date From:** 09/30/24 **Date To:** 10/01/24


**Incident Channels** \_\_\_\_\_ **Time From:** 0700 **Time To:** 0700

4. Communications		Name	Assigned To	Rx Freq	Rx Tone	Tx Freq	Tx Tone	Mode	Notes
Ch#	Function								
1	COMMAND	NIFC C8	ALL DIVS	169.5375	(T2) 123.0	164.7125	(T2) 123.0	A	KELLER PEAK
2	COMMAND	NIFC C9	ALL DIVS	170.0125	(T2) 123.0	165.2500	(T2) 123.0	A	BEAR MTN
3	COMMAND	NIFC C2	OOS	170.4500	(T2) 123.0	168.1000	(T2) 123.0	A	OUT OF SERVICE
4	COMMAND	NIFC C12	ALL DIVS	173.0375	(T2) 123.0	167.3250	(T2) 123.0	A	BUTLER PEAK
5	DISPATCH	BDF ADMIN	ALL DIVS	172.2250	0.0	164.1375	OST	A	BACK UP
6	TACTICAL	NIFC T3	DIV C/ DIV S	168.6000	(T2) 123.0	168.6000	(T2) 123.0	A	
7	TACTICAL	NIFC T4	DIV P/ NIGHT	166.7250	(T2) 123.0	166.7250	(T2) 123.0	A	
8	TACTICAL	NIFC T5	DIV R	166.7750	(T2) 123.0	166.7750	(T2) 123.0	A	
9	TACTICAL	NIFC T6	DIV U	168.2500	(T2) 123.0	168.2500	(T2) 123.0	A	
10	TACTICAL	VTAC 13	SUPP REP/HAZ TREE	158.7375	(T6) 156.7	158.7375	(T6) 156.7	A	SUPP REP/HAZ TREE
11	TACTICAL	VTAC 14	DIV T	159.4725	(T6) 156.7	159.4725	(T6) 156.7	A	
12	TACTICAL	VFIRE 25	STRUCTURE GRP	154.2875	(T6) 156.7	154.2875	(T6) 156.7	A	HAZARD TREE GRP
13	A/G CMD	A/G CMD	ALL DIVS	169.1000	0.0	169.1000	0.0	A	
14	A/G TAC	CDFA/G15	ALL DIVS	159.2775	(T16) 192.8	159.2775	(T16) 192.8	A	
15	TACTICAL	CALCORD	ALL DIVS	156.0750	(T6) 156.7	156.0750	(T6) 156.7	A	
16	EMERGENCY	AIRGUARD	ALL DIVS	168.6250	0.0	168.6250	(T1) 110.9	A	
17									
18									
19									
20	EMERGENCY	AIRGUARD		168.6250	0.0	168.6250	(T1) 110.9	A	

**5. Special Instructions**

**LINE COMMUNICATIONS PHONE # 805-622-9001 \*\*\*\*LINE V7\*\*\*\* For Commands utilize channels 1-4 depending on your geographic and aspect location on your DIV**

---

**6. Prepared by (Communications Unit Leader):** Name: Brady Holden 619.880.0619  Signature: /s/ Brady Holden

ICS 205 - CONTROLLED UNCLASSIFIED INFORMATION//BASIC NIMS IAP Date/Time: 09/29/24 1930

## Communications Unit NIFC Repeater System Guide

### Overview

- The NIFC repeater system is a series of channels linked together, allowing you to hear traffic from all areas of the fire.

### Channel Management

- **Geographic Location:** Change channels based on your geographic location to achieve the best receive and transmit capabilities.
- **Hard Tone Protection:** The channels are hard tone protected, meaning you cannot change the tones manually; you must change the channels.

### Operational Tips

- **Height and Power:** Height and power are critical. There will be areas where transmission or reception may be obstructed by interference from objects like mountains, trees, etc.
- **Human Repeaters:** Use human repeaters with mobile radios when necessary.

### Reference Materials

- **205 in IAP:** Refer to the 205 in your Incident Action Plan (IAP) for the best channel for your location. The 204 is only a guide.

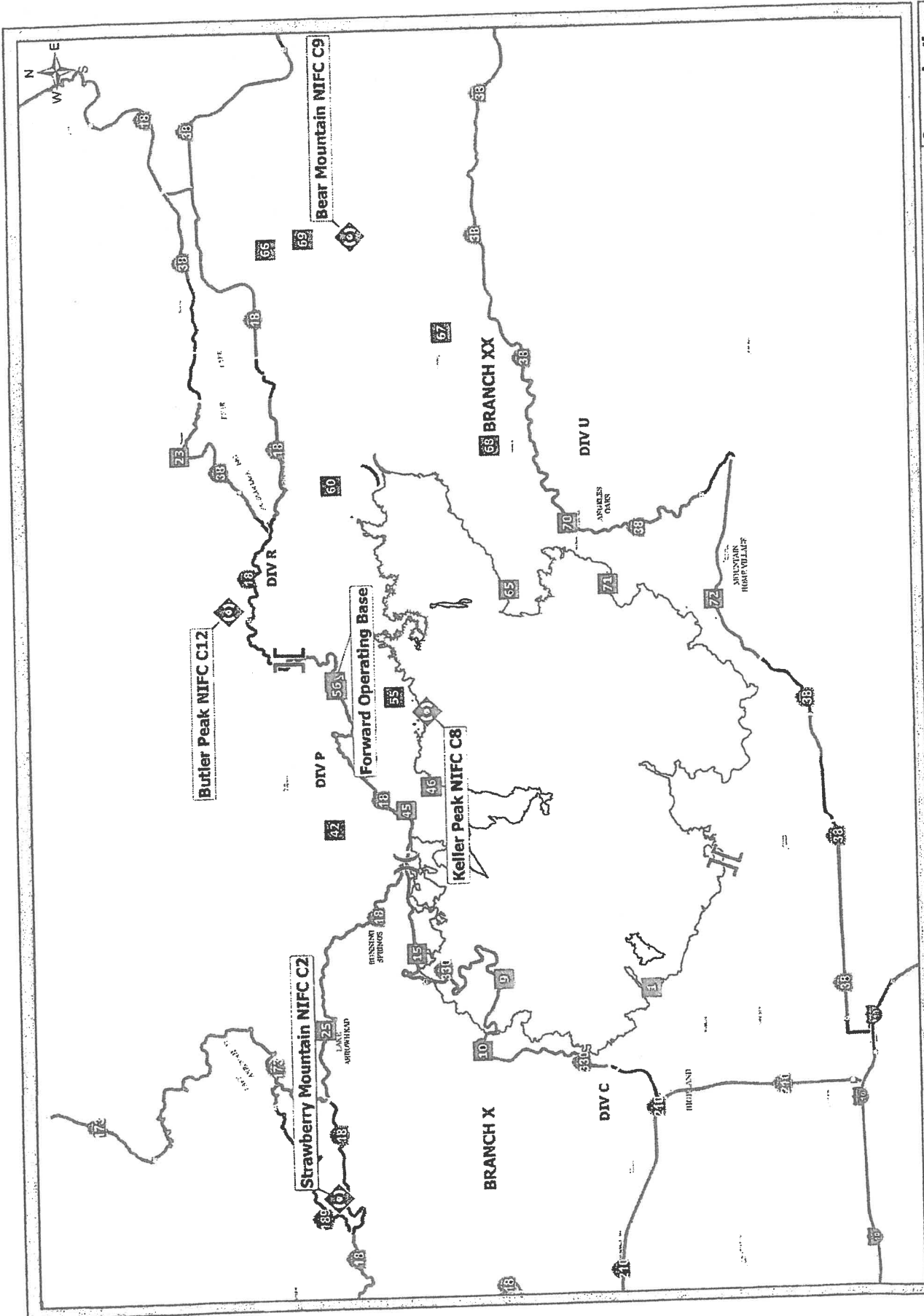
### Radio Settings

- **System Priority:** Your system priority should be disabled.
- **Command Frequencies:** Scan all command frequencies.

### Reporting and Assistance

- **Dead Zones:** Note any large areas with no radio reception, providing Latitude and Longitude Coordinates, and report them to the communications unit.
- **Communication Technicians:** Qualified communication technicians are available at the communications trailer to help answer questions.
- **System Evaluation:** The communication unit evaluates the system every shift to ensure it is functioning at its maximum performance level.





<b>Communications</b> LINE INCIDENT CA-BDF-012520	<b>Communications</b> LINE INCIDENT CA-BDF-012520
X Division Break II Branch Break Drop Point Camp	Repeater Contained Uncontained Wildfire Daily Fire Perimeter

## COMMUNICATIONS LIST (ICS 205A)

<b>1. Incident Name:</b>		<b>2. Operational Period:</b>		Date From:	09/30/24	Date To:	10/01/24
Line				Time From:	0700	Time To:	0700
<b>3. Basic Local Communications Information</b>							
<u>Incident Assigned Position</u>	<u>Name</u>	<u>Number</u>					
Incident Commander	Chris Fogle	(909) 238-2107					
Incident Commander	Norm Walker	(951) 323-6445					
Incident Commander (T)	James Courtright	(707) 798-7535					
Safety	Tom Sherman	(951) 218-6356					
Safety (T)	Nick Colonelli	(714) 507-5303					
Information Officer	Kate Kramer	(951) 970-8890					
Information Officer	Amanda Munsey	(760) 567-8331					
Liaison Officer	Kevin Klar	(661) 714-9282					
Liasion Officer	Janine Summy	(509) 429-1206					
Ops Section Chief	Mark Lamont	(805) 377-3754					
Planning Ops	Daniel Diaz	(909) 659-4596					
Planning Ops (T)	Cody Canning	(619) 639-0544					
Air Ops Branch Director	Galen Young	(575) 574-8720					
Medical	Erik Nelson	(760) 473-7378					
Plans Section Chief	Gary Bishop	(435) 253-2427					
Resources	Joel Shennum	(805) 458-1197					
Demob (T)	Jason Kammann	(775) 815-8050					
Training Specialist	Manny Martinez	(818) 742-8439					
Situation	Greg Breyer	(951) 318-9420					
Fire Behavior Analyst	John Fisher	(858) 945-6869					
Finance Section Chief	Debbie York	(760) 207-8832					
Logistics Section Chief	Russ Lajoie	(619) 504-6738					
Logistics Section Chief	Richard Sheets	(707) 834-2771					
Supply	Jim Lamont	(480) 980-5508					
Facilities	Maria Torres	(559) 359-9223					
Food	Colleen Gallagher	(615) 651-4337					
Ground Support	Dan Seawright	(951) 805-9326					
Ground Support	Joe Mock	(530) 257-3905					
Communications	Brady Holden	(619) 880-0619					
IT	Heather Wiskow	(971) 718-6584					
Lead Read	Odell Tucker	(909) 361-8580					
Security	Chris George	(951) 204-8888					
Communications	Trailer	(805) 622-9001					
<b>4. Prepared by:</b>		Position/Title:	COML	Signature:	Signature: /s/ Brady Holden 		
Name:							
ICS 205A	NIMS IAP	IAP Page _____		Date/Time:	09/29/24		



## Human Resource Message

Wildland Firefighting is hard work! Fatigue in Wildland Firefighting can have significant effects on both your physical and emotional state and can significantly impact how you function. Fatigue can impair performance and decision making, increasing the risk of injury as well as potential conflict in the work environment due to fatigue.

**Fatigue**—A sense of tiredness, either mental or physical, brought on by stress (lack of sleep, physical work, nutritional inadequacies, or mental stresses). Fatigue following work or sleep deprivation is a normal state and can be reversed with adequate recovery or rest.

**Accumulated (Chronic) Fatigue**—Fatigue from which normal rest does not produce recovery. Accumulated fatigue is often caused by extended periods of stress with inadequate recovery periods, resulting in decreased productivity, compromised immune function, and reduced alertness.

Fatigued workers perform poorly and behave carelessly, tolerate greater errors, and become inattentive. They display decreased motivation, increased irritability and depression, and low morale. Accumulated fatigue is more persistent, producing a wider array of effects on performance, health, and morale than ordinary fatigue. Accumulated fatigue requires longer recovery periods than ordinary fatigue.

**Correct nutrition, hydration and rest are all good coping mechanisms for stress and fatigue. Make good use of your down time and rest per the work/rest guidelines.**

### **Your Mental Health Matters!**

***HRSP: Pamela Spearow (t) - 505.228.9442, [pamela.spearow@usda.gov](mailto:pamela.spearow@usda.gov)***

**NFFE Union Steward for the USFS is Rebecca “Bekka” Miller, NFFE Local 1650 Steward; [rebeccam.miller@usda.gov](mailto:rebeccam.miller@usda.gov), 951-255-9408; Secondary: Afterhours/Nights: Justin Brown, NFFE Local 1650 Steward; [justin.i.brown@usda.gov](mailto:justin.i.brown@usda.gov) 530-250-5551 or 775-622-2183 [denice.edgar@usda.gov](mailto:denice.edgar@usda.gov). Available 24 hours daily**

# Line Incident Training Message

Use the QR Code at the bottom or on the IAP cover to access the Trainee Registration form and the exit interview.

## Trainee Registration Process

- ❑ Complete the Trainee Registration form accessed using the QR Code on this page.
- ❑ Submit a copy of your Red Card and the cover page of your Position Task Book to the TNSP. *You may use your smartphone to take pictures and email or text them to me OR come by the Training Office and I will be happy to scan them for you.*
- ❑ Follow up with the TNSP if you have any significant issues... i.e.: Changes in assignment/trainer, problems with the assignment etc.

## Closing Out the Training Package

The trainer and evaluator must “close-out” with the TNSP prior to DEMOB.

### Trainee:

- ❑ Complete the Exit Interview accessed using the QR Code.

### Trainer:

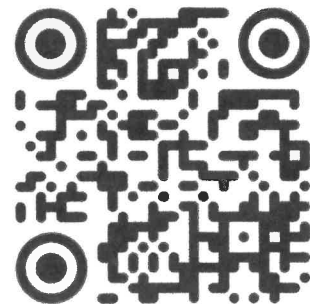
- ❑ Complete an electronic or paper Individual Performance Evaluation (ICS 225 or 226). A link will be provided to the Trainee by email. **Please make sure to INITIAL NOT X recommendation.**
- ❑ Complete the Evaluation Record in the back of the task book.
- ❑ Document all work completed by initialing the tasks in the PTB.
- ❑ If the Trainee is recommended for qualification, complete the Certification (page 2) of the Task Book.

## BRING ALL THE PAPERWORK AND YOUR TASK BOOK TO THE TNSP.

If you reach a point that as much work has been done in the position task book as is likely on this incident, you may perform the close-out process early, saving you time at DEMOB.

**Manny Martinez** is the Training Specialist assigned to the incident. I can be reached at:

- By phone or text at **818-742-8439**
- By email at [manuel\\_martinez@firenet.gov](mailto:manuel_martinez@firenet.gov)
- Or in the Training office trailer in ICP





For Cal OES assistance call:

Tony Rouhotas

(760) 925-8400

Randy Unkovich

(909) 451-1835

---

## **PUBLIC INFORMATION**

Please share photos and videos which may be used on the San Bernardino National Forest social media accounts and Inciweb.

INFO PHONE LINE: (909) 220-4292

EMAIL: 2024.LINE@FIRENET.GOV

LOST AND FOUND at PIO Trailer

For deliveries to ICP:

Line Fire Incident

c/o Snow Valley Ski Resort

Attn: (YOUR NAME & Crew/Engine Number)

35100 Highway 18

Running Springs, CA 92382



## **FINANCE MESSAGE**

**2024.line.finance@firenet.gov**

**CTRs, shift tickets and supporting documents** can be e-mailed to the address above. Hard copy CTRs and shift tickets can be brought to Finance for posting. Please submit documents either electronically (preferred) or hard copy. **Do not submit duplicates, send them in or turn them in NOT both and remember to include request # in top right corner.**

**Virtual Demob** is available for the Finance portion. **Please make sure you to include your e-mail address on at least your final CTR or Shift Ticket.** For contractors your travel time will be calculated based on the terms of your agreement.

**Approving Officials** for CTRs & shift tickets please write legibly and print your name under your signature.

**Contract equipment** please note your request number on the top right of the shift ticket and note any down time in the remarks block. **Make sure to record mileage for transports even if it's zero.** If you have been here for 14 days or more and would like an interim payment, please send an e-mail to the address above.

**Contract crews** – Crew Boss time starts at briefing. Contract crew member times start ½ hour later. Meal breaks need to be shown and **time stops at arrival back at ICP, base or spike camp.**

**Fire Replacement** - For replacement of non-cache items the requesting resource will take a completed OF-213 and OF-289 to Finance for review. Requests for replacement of government-issued non-standard items brought from the home unit must be accompanied by a current copy of a signed JHA or RA (IIBM Chapter 30 Page 30-5). Based on the documentation provided a determination for replacement will be made by the Finance Section Chief, IC, or INBA. Damaged items will be surrendered to the Supply Unit. Replacement for normal wear and tear is through home unit project funds. Please do not wait until demob to begin this process.

**Local Government Resources** – Please see OES page for contact information.

**IF YOU ARE A FEDERAL RESOURCE AND YOU ARE STILL ON THE INCIDENT WITHOUT A NEW 35000 NUMBER PLEASE SEE FINANCE. ALL NEW RESOURCE NUMBERS ARE EFFECTIVE STARTING 09/28/2024. PLEASE USE NEW RESOURCE NUMBERS ON ALL CTR'S AND SHIFT TICKETS GOING FORWARD.**

# Line Fire Documentation Process

1. Name files in accordance with the standardized NWCG naming conventions:  
**{DocType}\_{Version or Author}\_{Date}\_{IncidentNumber}**

EXAMPLE: UNIT DAILY LOGS – ICS 214

214\_DOCL\_Spiess\_20240928\_012520

EXAMPLE: GENERAL MESSAGES – ICS 213

213\_DOCL\_Spiess\_20240928\_012520

**\*Reminder: For 213's, use SENDER's Unit and SENDER's Last Name if known\***

Items required for final eDOC package include the following:

DOAs, Field Wx Obs, Fire Narrative Summaries, IAPs, 209s, 215s, Newspaper Clippings, WFDSS reports, Mechanical Use in Wilderness Requests, Final Maps, Essential Photos, Special Interest and Political Inquiries, Safety Analysis, 201s and , Web Pages, Videos and Final Cost Statements

**\*\*Exceptions to the standard naming conventions can be found on page 15 of PMS 277**

2. Upload your files in one of two ways:

A. Drop them daily into the red folder  
0\_To Be Filed in eDOC Box in  
Teams>General Channel>files, or use  
SharePoint location.

B. Email them daily to  
[2024.line.docs@firenet.gov](mailto:2024.line.docs@firenet.gov)

All documentation will be filed electronically in TEAMS. Not sure which documents are Permanent Records or how to name the files? Check out page 4 of PMS 277.  
If you have questions about what to file or how, please reach out!

**Need help? Ask!**

**Lisa Spiess – DOCL**

**[lisa\\_spiess@firenet.gov](mailto:lisa_spiess@firenet.gov)**

## Line Fire Incident Suppression Repair Plan CA-BDF-012520

**Purpose:** The goal of this Plan is to repair the land, water, and property impacts caused by incident suppression, returning the area to a more natural condition by rehabilitating impacted areas to the extent practical.

**The overall goal for suppression repair on this incident is to:**

- Avoid concentration of water runoff onto the fire line and allow for proper drainage of water across the slope.
- Reduce impacts caused by Fire Suppression Tactics.

**General Suppression Repair Items:**

- Backhaul all trash.
- Backhaul hose.
- Remove all flagging.
- Repair any fences which were cut or damaged to allow for firefighter or equipment access.
- Remove soil that was deposited in watercourses during fire suppression activities.

**Dozer Line Suppression Repair:**

- Pull in/spread all berms created as a result of line construction.
- Install water-bars according to diagram below.
- Pull back perched/piled soil within 100 feet of any watercourse and redistribute across the slope.
- When dozer lines connect to existing permanent roads; use chunking, berming or placement of boulders to prevent OHV and vehicle traffic onto dozer line, unless otherwise specified.

**Hand Line Suppression Repair:**

- Pull in/spread all berms created as a result of line construction.
- Disperse cut vegetation across the line.
- Remove all trenches on under slung line and restore to original contour.
- Install water bars to a depth of at least 4 inches.

**Chipping Suppression Repair:**

- Where identified, chip cut vegetation.
- Haul cut vegetation from surrounding areas to chipper.
- Maintain a chip depth of 2-4".
- Do not deposit chips at the base of trees.

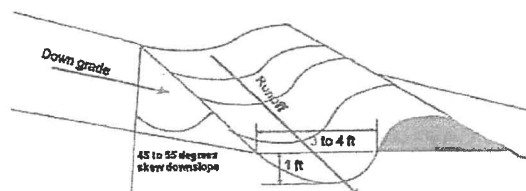
**Helispots, Safety Zones, Drop Points and other Clearings.**

- All clearings will be returned as closely to pre-incident conditions as is possible.
- Berms will be pulled or raked back into the site.
- If needed, site will be crowned to facilitate drainage.
- Vegetation cut within the disturbed area will be scattered and distributed across the area.

**Flagging:**

- White flagging with red polka-dot will be used to identify exclusion zones.

**Equipment Wash:** Suppression repair equipment working in DIV A/Z will be washed before moving to work locations in other divisions. New equipment moving to DIV P/R/U will be washed prior to entering DIV. Washed equipment will be reported to LEAD READ.





**09/30/2024**

**TENTATIVE DEMOB**

**LINE CA-BDF-012520**

**CREWS**

**C-139                      0700                      (CRWC)                      CRWC - FORTUNA 2**

**OVERHEAD**

**O-404                      1100                      (REAF)                      TULEYA, SAMANTHA RAE**

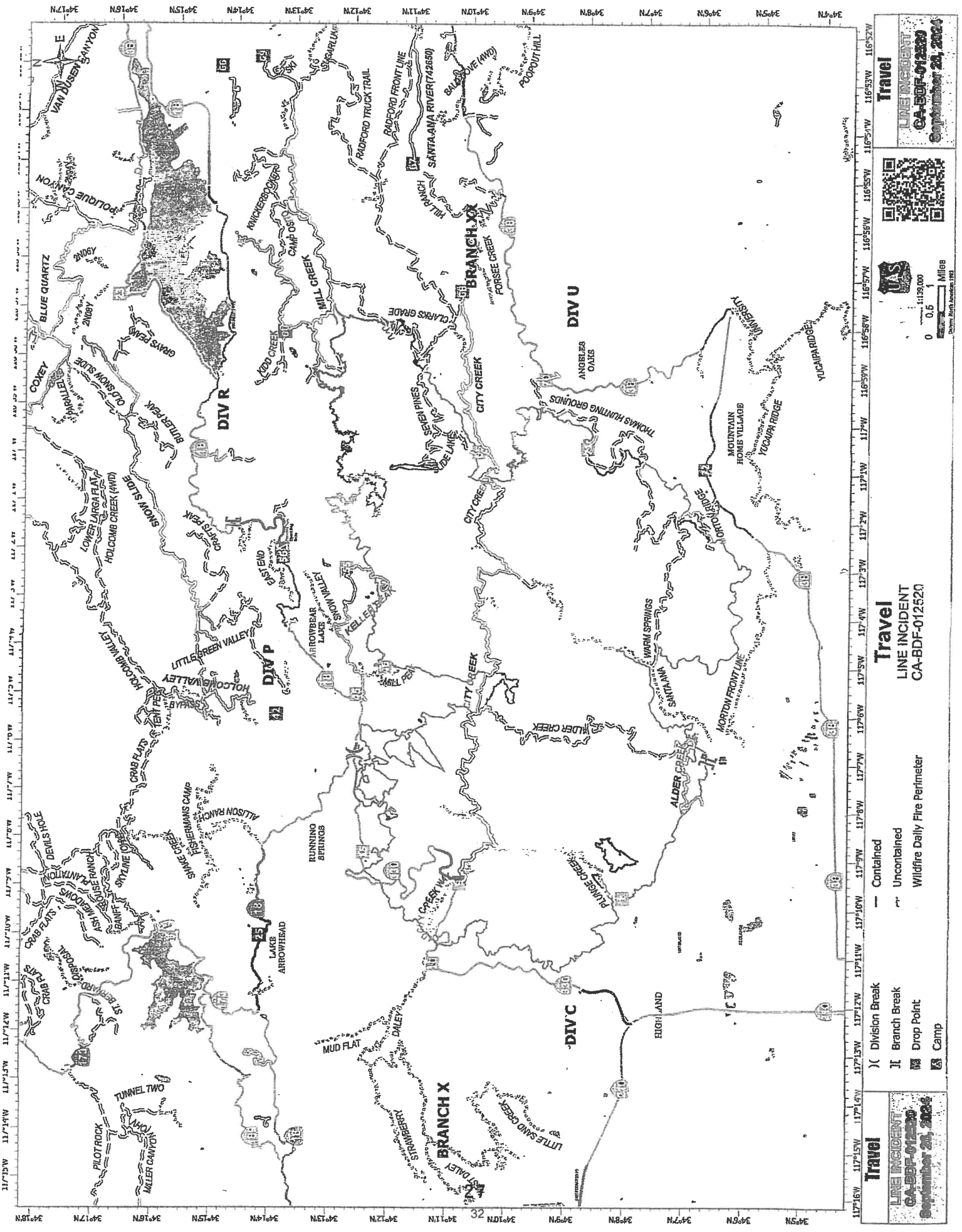
**10/01/2024**

**TENTATIVE DEMOB**

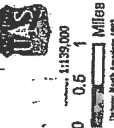
**EQUIPMENT**

**E-30055                      0900                      (DZR2)                      DZR2 - WILBER CONSTRUCTION INC -**

**E-60008                      0900                      (TASK)                      TASK - TASK FORCE - EMAC - MT**



**Travel**  
 LINE INCIDENT  
 CA-BDF-012820  
 September 28, 2024



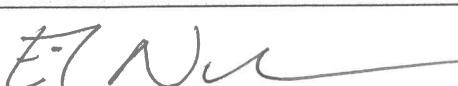
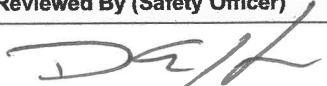
**Travel**  
 LINE INCIDENT  
 CA-BDF-012820

— Contained  
 ~ Uncontained  
 Wildfire Daily Fire Perimeter

) Division Break  
 | Branch Break  
 M Drop Point  
 K Camp

**Travel**  
 LINE INCIDENT  
 CA-BDF-012820  
 September 28, 2024

# MEDICAL PLAN (ICS 206 WF)

<b>1 Incident Name</b>		<b>1. Operational Period (Date/Time)</b>				
<b>Line Fire</b> CA-BDF-012520		<b>09/30/2024 – 10/01/2024</b> 0700 - 0700				
<b>2. EMS / Ground Ambulance Services</b>						
<b>Name</b>	<b>Location</b>	<b>Contact</b>		<b>Advanced Life Support (ALS)</b> Yes No		
<b>Incident Ambulances</b>	<b>As Assigned by OPS</b>	<b>Line Communications</b> <i>Utilize CMD</i>		X		
<b>3. Air Rescue / Air Ambulance Services</b> <i>Notify Air Ops of any air resource order</i>						
<b>Name</b>	<b>Contact</b>		<b>Type of Aircraft &amp; Capability</b>			
<b>Incident Aircraft</b> <i>(Assigned by Air Ops as requested)</i>	<b>Line Communications</b> <i>Utilize CMD</i>		<b>Type II &amp; III Helicopters ALS, Day Only</b> <i>Will require patient transfer</i>			
<b>San Bernardino Sheriff</b> <i>(If available, from San Bernardino)</i>	<b>Line Communications</b> <i>Utilize CMD</i>		<b>Type III Helicopter ALS, Day &amp; Night</b> <i>Day &amp; Night Hoist</i>			
<b>CHP</b> <i>(If available, from Apple Valley)</i>	<b>Line Communications</b> <i>Utilize CMD</i>		<b>Type III Helicopter ALS, Day &amp; Night</b> <i>Day &amp; Night Hoist</i>			
<b>Air Ambulance</b> <i>(15 min from Rancho Cucamonga, 24hrs)</i>	<b>Line Communications</b> <i>Utilize CMD</i>		<b>Type III Helicopter ALS, Day &amp; Night</b> <i>Air Ambulance only</i>			
<b>US Military</b> <i>(As by the AFRCC)</i>	<b>Line Communications</b> <i>Utilize CMD</i>		<b>Type I Helicopter ALS, Day &amp; Night</b> <i>Day &amp; Night Hoist</i>			
<b>4. Hospitals</b> <i>(All times estimated from Aikens Camp; Hospitals listed in distance from incident)</i>						
<b>Hospital Name</b> <i>(Trauma Level, Burn Center)</i>	<b>GPS Datum – WGS 84</b> <b>Degrees Minutes Seconds</b> <i>Lat/Long are to hospital helipads</i>	<b>Travel Time</b> Air Gnd		<b>Phone</b>	<b>Helipad</b> Yes No	<b>Hospital Address</b>
<b>Bear Valley Community Hospital</b> <i>Basic ER</i>	Lat:	N/A	20 Min	(909) 866-6501	X	41870 Garstin Dr Big Bear Lake, CA 92315
	Long:					
	VHF:					
<b>Mountains Community Hospital</b> <i>Basic ER</i>	Lat:	5 Min	30 Min	(909) 336-3651	X	29101 Hospital Rd Lake Arrowhead, CA 92352
	Long:					
	VHF:					
<b>Loma Linda University Medical Center</b> <i>Level 1 Trauma</i>	Lat:	10 Min	1 Hr	(909) 558-4000	X	11234 Anderson St Loma Linda, CA 92354
	Long:					
	VHF:					
<b>Arrowhead Regional Medical Center</b> <i>Level 2 Trauma &amp; Burn Center</i>	Lat:	10 Min	1 Hr	(909) 580-1000	X	400 N. Pepper Ave Colton, CA 92324
	Long:					
	VHF:					
<b>5. Division / Crew Emergency Pre-Plan</b> <span style="float: right;"><i>Update and discuss with assigned resources daily.</i></span>						
<b>Fireline EMT / Medic's Division / Branch Location</b>						
<b>Hoist / Short Haul site:</b> Lat: / Long: / Elevation:						
<b>Helispot:</b> Lat: / Long: / Elevation:						
<b>6. Remote Aid Stations</b>		<b>Point of Contact: Erik Nelson 760-473-7378</b>				
<b>Snow Valley Camp</b>		<b>Equipment Available on Site: Advanced Life Support</b>				
		<b>Ambulance ETA: Air – 15 min Ground – 20 min</b>				
<b>7. Prepared By (Medical Unit Leader)</b>		<b>8. Date/Time</b>	<b>9. Reviewed By (Safety Officer)</b>		<b>10. Date/Time</b>	
 <b>E. Nelson MEDL</b>		<b>09/29/2024</b> <b>1800</b>	 <b>T. Sherman / D. Harker / N. Colonelli</b> <b>SOF2</b>		<b>09/29/2024</b> <b>1800</b>	

**Medical Incident Report**

FOR A **NON-EMERGENCY INCIDENT**: WORK THROUGH CHAIN OF COMMAND TO REPORT AND TRANSPORT INJURED PERSONNEL AS NECESSARY.

FOR A **MEDICAL EMERGENCY**: IDENTIFY ON SCENE POINT OF CONTACT BY NAME AND POSITION AND ANNOUNCE "MEDICAL EMERGENCY" TO INITIATE RESPONSE FROM COMMUNICATIONS

**Use the following items to communicate situation to communications/dispatch.**

**1. CONTACT COMMUNICATIONS / DISPATCH** (Verify correct frequency prior to starting report)

*Ex: "Communications, Div. Alpha. Stand-by for Emergency Traffic."*

**2. INCIDENT STATUS:** Provide incident summary (including number of patients) and command structure.

*Ex: "Communications, I have a Red priority patient, unconscious, struck by a falling tree.*

*Requesting air ambulance to Forest Road 1 at (Lat./Long.)*

*"This will be the Division W Medical, POC is TFLD Jones. EMT Smith is providing medical care."*

Severity of Emergency AND Transport Priority (Priority 1, 2, 3)	<input type="checkbox"/> <b>RED / PRIORITY 1 Life or limb threatening injury or illness. Evacuation need is IMMEDIATE</b> <i>Ex: Unconscious, difficulty breathing, bleeding severely, 2° – 3° burns more than 4 palm sizes, heat stroke, disoriented.</i>	
	<input type="checkbox"/> <b>YELLOW / PRIORITY 2 Serious Injury or illness. Evacuation may be DELAYED if necessary.</b> <i>Ex: Significant trauma, unable to walk, 2° – 3° burns not more than 1-3 palm sizes.</i>	
	<input type="checkbox"/> <b>GREEN / PRIORITY 3 Minor Injury or illness. Non-Emergency transport</b> <i>Ex: Sprains, strains, minor heat-related illness.</i>	
Nature of Injury or Illness & Mechanism of Injury		<i>Brief Summary of Injury or Illness (Ex: Unconscious, Struck by Falling Tree)</i>
Transport Request		<i>Air Ambulance / Short Haul/Hoist Ground Ambulance / Other</i>
Patient Location		<i>Descriptive Location &amp; Lat. / Long. (WGS84)</i>
Incident Name		<i>Geographic Name + "Medical" (Ex: Trout Meadow Medical)</i>
On-Scene Point of Contact		<i>Name of on-scene POC of Incident within an Incident (Ex: TFLD Jones)</i>
Crew Patient Care		<i>Name of Care Provider (Ex: EMT Smith)</i>

**3. INITIAL PATIENT ASSESSMENT:** Complete this section for each patient as applicable (start with the most severe patient)

Patient Assessment:      Age:      Weight:      Chief Complaint:  
(IRPG PAGE 106)

Skin Signs: (color/moisture/temp)      Level of Consciousness:      BP:      HR:      Respirations:

Treatment:

**4. TRANSPORT PLAN:**

Evacuation Location (*drop point, intersection, helispot, Lat. / Long, hazards*)      Patient's ETA to Location:

**5. ADDITIONAL RESOURCES / EQUIPMENT NEEDS:**

*Paramedic / EMT - Crews - Immobilization Devices - AED - Oxygen - Trauma Bag - IV/Fluid(s) - Splints - Rope rescue - Wheeled litter - HAZMAT - Extrication*

**6. COMMUNICATIONS: Identify State Air/Ground EMS Frequencies and Hospital Contacts as applicable**

Function	Channel Name/Number	Receive (RX)	Tone/NAC *	Transmit (TX)	Tone/NAC *
COMMAND					
AIR-TO-GRND					
TACTICAL					

**7. CONTINGENCY: Considerations:** *If primary options fail, what actions can be implemented in conjunction with primary evacuation method? Be thinking ahead.*

**8. ADDITIONAL INFORMATION:** *Updates/Changes, etc.*

**REMEMBER:** Confirm ETA's of resources ordered. Act according to your level of training  
Be Alert - Keep Calm - Think Clearly - Act Decisively

\*\*\* Follow up with MEDL upon return to ICP \*\*\*



