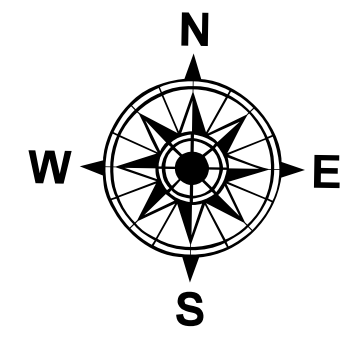
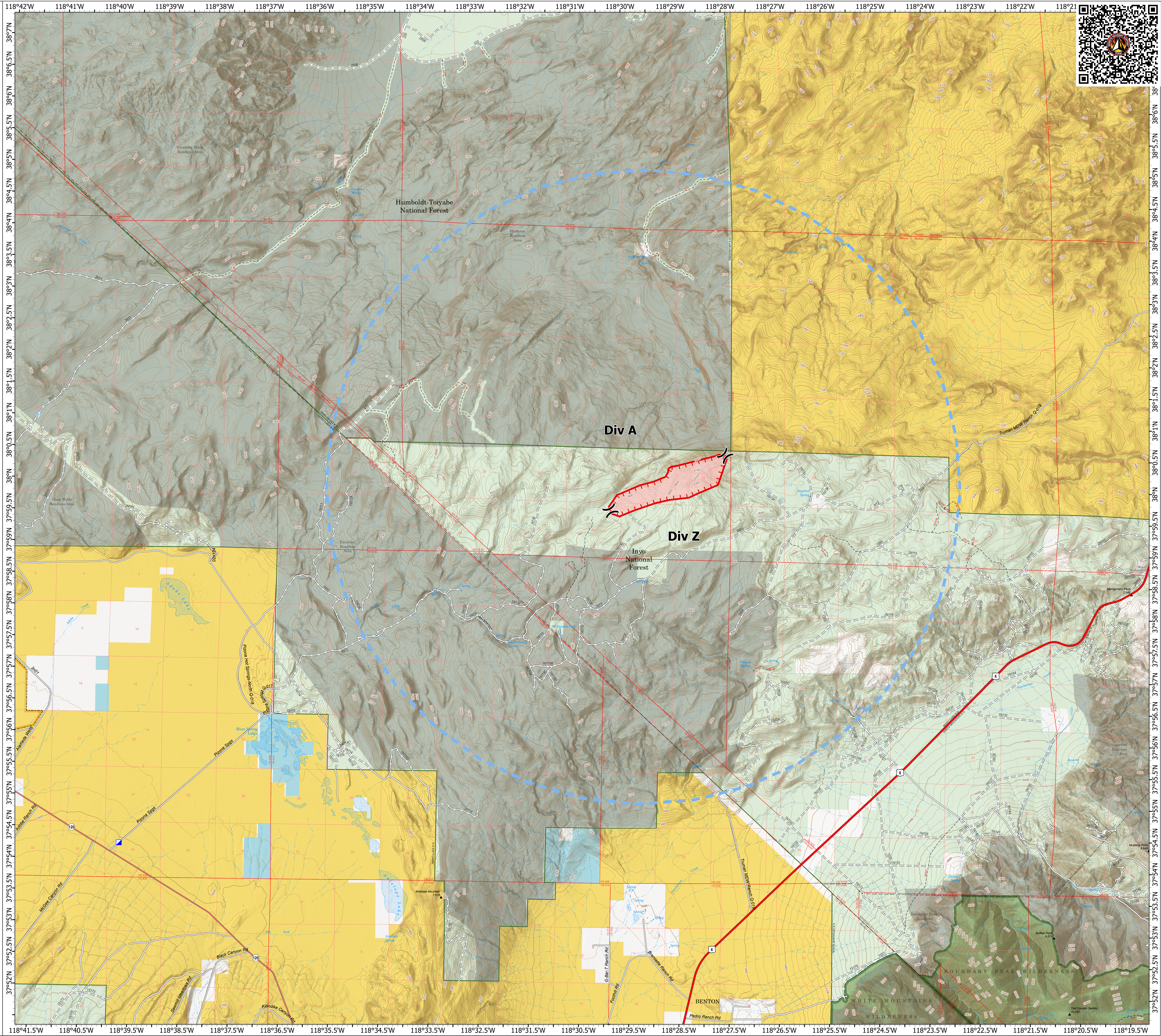


Operations

Pizona
CA-INF-000911
6/28/2024 Day

642 acres acres at 6/27/2024 1800

- Structure
- × Division Break
- Incident Command Post
- Temporary Flight Restriction
- Uncontained
- Wildfire Daily Fire Perimeter
- Primary Highway
- Secondary Highway
- Secondary Dirt
- Dirt Road
- Unimproved Road
- Forest Service Roads Closed
- USFS Roadless Areas
- Bureau of Land Management Wilderness
- FS Wilderness Boundary
- Forest Service Land
- Bureau of Land Management Lands
- State Lands



1:34,466 | ywang | 6/27/2024 1838
Acres from GPS/IR
North American 1983 Datum, LatLong Grid