

**CORRECTED**

# Pizona Fire

July 2, 2024

Tuesday

0600 - 2200

## Incident Action Plan

Pizona: P5R1MU (0504)

Fire Number: CA-INF-000911

Notes	

**Maps, IAP, Check-in, Demob, Finance**



<https://linktr.ee/2024pizona>

## INCIDENT OBJECTIVES (ICS 202)

<b>1. Incident Name:</b>	<b>2. Operational Period: DAY</b>	
PIZONA	Date/Time From: 07/02/2024 0600 TUE	Date/Time To: 07/02/2024 2200 TUE
<b>3. Objective(s):</b>		
<u>Management Objectives:</u>		
<ul style="list-style-type: none"> <li>Provide for emergency personnel and public safety at all times.</li> <li>Protect property, improvements, and infrastructure.</li> <li>Ensure coordinated, timely and accurate release of public information.</li> <li>Foster and maintain relationships with all cooperators and stakeholders.</li> <li>Protect economic, natural, cultural and heritage resources.</li> <li>Maintain fiscal accountability and keep costs commensurate with values at risk.</li> </ul>		
<u>Control Objectives:</u>		
<ul style="list-style-type: none"> <li>Keep the fire North of McBride Springs.</li> <li>Keep the fire South of Jack Spring.</li> <li>Keep the fire East of Forest Rd 1N1132.</li> <li>Keep the fire West of Forest Rd 206.</li> </ul>		
<b>4. Operational Period Command Emphasis:</b>		
<b>General Situational Awareness:</b>		
<ul style="list-style-type: none"> <li>Steep and rugged terrain, dry and receptive fuel beds, active area for fire history and drought-stressed trees.</li> <li>Remote fire area with longer drive times. Limited narrow and unimproved roads or trails.</li> </ul>		
<b>5. Site Safety Plan Required?</b> Yes <input type="checkbox"/> No <input checked="" type="checkbox"/>		
<b>Approved Site Safety Plan(s) Located at:</b>		
<b>6. Incident Action Plan</b> (the items checked below are included in this Incident Action Plan):		
<input checked="" type="checkbox"/> ICS 202 <input checked="" type="checkbox"/> ICS 203 <input checked="" type="checkbox"/> ICS 204 <input checked="" type="checkbox"/> ICS 205 <input type="checkbox"/> ICS 205A <input checked="" type="checkbox"/> ICS 206	<input type="checkbox"/> ICS 207 <input checked="" type="checkbox"/> ICS 208 <input type="checkbox"/> ICS 220 <input checked="" type="checkbox"/> Map/Chart <input checked="" type="checkbox"/> Weather Forecast/Tides/Currents	Other Attachments: <input checked="" type="checkbox"/> ICS 214 <input checked="" type="checkbox"/> DEMOB INSTRUCTIONS <input checked="" type="checkbox"/> FINANCE MESSAGE <input checked="" type="checkbox"/> RESOURCE MESSAGE
<b>7. Prepared by:</b> DANA CARTER	<b>Position/Title:</b> PSCC	<b>Signature:</b> /s/ Dana Carter
<b>8. Approved by Incident Commander:</b>	<b>Name:</b> JAYSON SMITH, ICT3	<b>Signature:</b> /s/ Jayson Smith
<b>ICS 202</b>	<b>IAP Page</b>	<b>Date/Time:</b> 07/01/2024 2000

## ORGANIZATION ASSIGNMENT LIST (ICS 203)

<b>1. Incident Name:</b>		<b>2. Operational Period:</b> DAY	
PIZONA		Date/Time From: 07/02/2024 0600 TUE	Date/Time To: 07/02/2024 2200 TUE
<b>3. Incident Commander(s) and Command Staff:</b>			
IC/UC	JAYSON SMITH (LWD 7/10) JAMES GRUWELL (LWD 7/10) (T)	<b>7. Operations Section:</b>	
DEPUTY		OPS SECTION CHIEF	JAKOB BESMER (LWD: 7/2) ANGEL AVILA (LWD: 7/10) (T)
SAFETY OFFICER		DAY OPS SECTION CHIEF	
INFORMATION OFFICER	LISA COX (LWD 7/10) ROBBIE JOHNSON (RIST VIRTUAL)	NIGHT OPS SECTION CHIEF	
LIAISON OFFICER		DEPUTY OPS SECTION CHIEF	
<b>4. Agency/Organization Representative(s):</b>		STAGING AREA	
<b>Agency/Organization</b>	<b>Name</b>		
USFS INYO	LESLEY YEN TARO PUSINA (T)	DIVISION/GROUP	ALPHA  DANIEL BREUKLANDER (LWD 7/9) MIKE CHRISTIAN (LWD 7/9) (T)
USFS INYO DFMO	ANNAMARIA ECHEVERRIA		
USFS HUMBOLDT-TOIYABE	MATTHEW ZUMSTEIN AARON COOGAN	DIVISION/GROUP	ZULU MATTHEW E DUNLAP ELI MORALES (T)
BLM CARSON CITY	KIMBERLY DOW	DIVISION/GROUP	ICP HELISPOT REPORT TO ICP HELISPOT
BLM BISHOP	SHERRI LISIUS	DIVISION/GROUP	CONTINGENCY REPORT TO IC
LEAD RESOURCE ADVISOR	LAUREL LUEDERS	DIVISION/GROUP	BAER TEAM TODD ELLSWORTH
<b>5. Planning Section:</b>			
CHIEF	DANA CARTER (RIST VIRTUAL)	<b>7b. Air Operations Branch:</b>	
DEPUTY		AIR OPS BRANCH DIRECTOR	
RESOURCES UNIT	KARLY DEMARS (RIST VIRTUAL)	AIR ATTACK SUPERVISOR	
RESOURCE ADVISORS	LAUREL LUEDERS (LWD 7/10); JACQUELINE BEIDL(LWD 7/10) KRYSTAL KISSINGER (LWD 7/11)	AIR SUPPORT SUPERVISOR	
DOCUMENTATION UNIT	SPENCER POLLUCK (RIST VIRTUAL)	HELICOPTER COORDINATOR	
SITUATION UNIT	JODI WETZSTEIN (RIST VIRTUAL)	AIR TANKER COORDINATOR	
DEMOBILIZATION UNIT	DONNA THOMAS (RIST VIRTUAL)	<b>8. Finance/Administration Section:</b>	
FIRE BEHAVIOR ANALYST		CHIEF	SHELLY DENNIS (LWD 7/13)
GIS SPECIALIST	DAVID HOOD (RIST VIRTUAL) YEZHOU WANG (RIST VIRTUAL) (T)	DEPUTY	
<b>6. Logistics Section:</b>		TIME UNIT	CYNTHIA WHARTON (LWD 7/13)
CHIEF	NICOLE GREEN (LWD 7/10)	PERSONNEL TIME RECORDER	JAMEISHA WASHINGTON (LWD 7/10) (T)
DEPUTY	GARY WRIGHT (LWD: 7/13)	EQUIPMENT TIME RECORDER	BOBI WIRKKALA (LWD 7/13) (T)
RECEIVING/DISTRIBUTION MANAGER	DEBBIE MCLAUGHLIN (LWD 7/12)	COST UNIT	
COMMUNICATIONS UNIT	JEFF TONG (LWD 7/11)		
FACILITIES UNIT			
GROUND SUPPORT UNIT			
MEDICAL UNIT			
SECURITY UNIT	WAYNE NOMI (7/14)		
FOOD UNIT			
<b>9. Prepared By:</b> Name: DANA CARTER		Position/Title: PSCC	Signature:
ICS 203	IAP Page	Date/Time: 06/30/2024 2000	/s/ Dana Carter

## Spot Forecast for Pizona...Inyo NF

National Weather Service Reno NV

250 PM PDT Mon Jul 1 2024

Forecast is based on forecast start time of 2200 PDT on July 01.

If conditions become unrepresentative...contact the National Weather Service in Reno.

### .DISCUSSION...

\* Northerly afternoon and evening breezes persist through Wednesday.

\* Strong high pressure brings an extended period of above normal temperatures, with hottest temperatures expected this weekend into early next week.

\* Expect dry conditions to continue. Minimum daytime RH drops to single digits Wednesday onward with very poor overnight recoveries.

### .REST OF TONIGHT...

Sky/Weather.....Clear.

Temperature.....Min 53-55.

RH.....Max 30-32%.

20-Foot Winds.....North winds 11-16 mph with gusts to 25 mph decreasing to 7-8 mph overnight.

LAL.....1.

Chc Wetting Rain....0%.

Mixing Height.....200-600 ft agl overnight.

Transport Winds.....North 10-15 mph.

Ventilation.....Marginal to poor.

Haines Index.....4.

### .TUESDAY...

Sky/Weather.....Sunny.

Temperature.....Max 78-80.

RH.....Min 10-12%.

20-Foot Winds.....Northeast winds around 5-7 mph shifting to the north 7-10 mph in the late morning and afternoon.

LAL.....1.

Chc Wetting Rain....0%.

Mixing Height.....200-600 ft agl then 7100-8100 ft agl in the late morning and afternoon.

Transport Winds.....Light winds becoming northeast around 10 mph early in the afternoon, then shifting to the northwest late in the afternoon.

Ventilation.....Poor to very good.

Haines Index.....4.

**.TUESDAY NIGHT...**

Sky/Weather.....Clear.  
Temperature.....Min 54-56.  
RH.....Max 22-24%.  
20-Foot Winds.....North winds 8-12 mph shifting to the northwest 7-9 mph overnight.  
LAL.....1.  
Chc Wetting Rain....0%.  
Mixing Height.....8000-8200 ft agl in the evening decreasing to 200-600 ft agl overnight.  
Transport Winds.....North 10-15 mph shifting to the west after 3  
am.  
Ventilation.....Very good to poor.  
Haines Index.....5.

**.WEDNESDAY...**

Sky/Weather.....Sunny.  
Temperature.....Max 83-85.  
RH.....Min 8-10%.  
20-Foot Winds.....West winds 7-9 mph shifting to the north 8-12 mph in the afternoon.  
LAL.....1.  
Chc Wetting Rain....0%.  
Mixing Height.....200-600 ft agl then 7800-8800 ft agl in the late morning and afternoon.  
Transport Winds.....West around 10 mph.  
Ventilation.....Poor to very good.  
Haines Index.....5.

Forecaster...Whitlam  
Requested by...Jodi Wetzstein  
Type of request...WILDFIRE  
.TAG 2417132.0/REV  
.DELDT 07/01/24

**Division/Group Assignment List (ICS 204 WF)**  
**Controlled Unclassified Information//Basic**

<b>1. Incident Name:</b>			<b>3.</b>			
PIZONA			<b>Branch:</b>		<b>Division/Group:</b>	
<b>2. Operational Period: DAY</b>			ALPHA			
Date/Time From: 07/02/2024 0600 TUE		Date/Time To: 07/02/2024 2200 TUE				
<b>4. Operations Personnel</b>						
<b>OPERATIONS CHIEF</b>		JAKOB BESMER ANGEL AVILA (T)		<b>BRANCH DIRECTOR</b>		
<b>DIVISION/GROUP SUPERVISOR</b>		DANNY BREUKLANDER MIKE CHRISTIAN (T)		<b>AIR ATTACK SUPERVISOR</b>		
<b>5. Resources Assigned this Period</b>						
Strike Team / Task Force / Resource Designator		LWD	Leader	Number Persons	Drop Off PT./Time	Pick Up PT./Time
HC1 TEXAS CANYON IHC (C-3)		07/09	SAUL MARTINEZ	22	LINE SPIKE/0600	LINE SPIKE/2200
HC1 HELENA IHC (C-4)		07/04	CHARLIE PALERMO	23	LINE SPIKE/0600	LINE SPIKE/2200
CR2I GROVELAND CREW 4 (C-1)		07/11	STEVEN MEEKS	23	LINE SPIKE/0600	LINE SPIKE/2200
CR2I BLACK EAGLES 2 (C-6) <b>Moved to Z</b>		07/12	GUSTAVO SANTOYO	21	LINE SPIKE/0600	LINE SPIKE/2200
READ (O-12)		07/11	KRYSTAL KISSINGER	1	LINE SPIKE/0600	LINE SPIKE/2200
EMPF (O-51) <b>Moved to Z</b>		07/12	BRANDON GRAY	1	LINE SPIKE/0600	LINE SPIKE/2200
EMTF (O-49) <b>Moved to Z</b>		07/12	LOGAN BATES	1	LINE SPIKE/0600	LINE SPIKE/2200
<b>6. Control Operations/Work Assignments:</b>						
Mop up to the extent necessary to secure perimeter.						
<b>7. Special Instructions:</b>						
Use MIST tactics in identified sensitive areas flagged in orange/white stripped flagging. Establish approved helispots and provide lat/longs to Operations. Establish sling sites and provide lat/longs to Operations. Identify qualified EMTs/medical support personnel within crew modules and provide to Operations.						
RADIO USE: Use Pizona Command Repeat on fire. Use Forest North T3 for IWI communications with dispatch and routine traffic with Bishop airport.						
<b>8. Division/Group Communication Summary</b>						
Function	Channel	RX Frequency N/W	RX Tone/NAC	TX Frequency N/W	TX Tone/NAC	Mode
COMMAND	PIZONA CMD RPT	170.0000 N		166.6750 N	136.5	A
COMMAND	NORTH T3	173.800 N		165.0125 N	131.8	A
TACTICAL	R5 T5	167.1125 N		167.1125 N		A
AIR TO GROUND	A/G PRIMARY	169.2000 N		169.2000 N		A
AIR TO GROUND	A/G SECONDARY	168.5000 N		168.5000 N		A
<b>9. Prepared By (Resource Unit Leader)</b>			<b>Approved By (Planning Section Chief)</b>		<b>Date</b>	<b>Time</b>
KARLY DEMARS			DANA CARTER		07/01/2024	2000

**Division/Group Assignment List (ICS 204 WF)**  
**Controlled Unclassified Information//Basic**

<b>1. Incident Name:</b>			<b>3.</b>			
PIZONA			<b>Branch:</b>		<b>Division/Group:</b>	
<b>2. Operational Period: DAY</b>			ZULU			
Date/Time From: 07/02/2024 0600 TUE		Date/Time To: 07/02/2024 2200 TUE				
<b>4. Operations Personnel</b>						
<b>OPERATIONS CHIEF</b>		JAKOB BESMER ANGEL AVILA (T)		<b>BRANCH DIRECTOR</b>		
<b>DIVISION/GROUP SUPERVISOR</b>		MATT DUNLAP ELI MORALES (T)		<b>AIR ATTACK SUPERVISOR</b>		
<b>5. Resources Assigned this Period</b>						
Strike Team / Task Force / Resource Designator		LWD	Leader	Number Persons	Drop Off PT./Time	Pick Up PT./Time
SMJK		07/02	MEGAN EMERSON	6	LINE SPIKE/0600	H-2/0900
HCI CRANE VALLEY IHC (C-2)		07/08	JOSE OLIVA	18	LINE SPIKE/0600	LINE SPIKE/2200
HCI INYO IHC (C-5)		07/13	JOEL SCHILLING	24	LINE SPIKE/0600	LINE SPIKE/2200
HC2IA FOLSOM LAKE (C-7)		07/08	ROGER HOOPER	18	LINE SPIKE/0600	LINE SPIKE/2200
EMPF (O-16)		07/12	BEN CORRAL	1	LINE SPIKE/0600	LINE SPIKE/2200
EMTF (O-50)		07/12	BRYAN OWEN	1	LINE SPIKE/0600	LINE SPIKE/2200
<b>C-6 Black Eagles Crew</b>						
<b>EMPF O-51 Gray</b>						
<b>EMTF O-49 Bates</b>						
<b>6. Control Operations/Work Assignments:</b>						
Mop up to the extent necessary to secure perimeter.						
<b>7. Special Instructions:</b>						
Use MIST tactics in identified sensitive areas flagged in orange/white stripped flagging. Establish approved helispots and provide lat/longs to Operations. Establish sling sites and provide lat/longs to Operations. Identify qualified EMTs/medical support personnel within crew modules and provide to Operations.  <b>RADIO USE:</b> Use Pizona Command Repeat on fire. Use Forest North T3 for IWI communications with dispatch and routine traffic with Bishop airport.						
<b>8. Division/Group Communication Summary</b>						
Function	Channel	RX Frequency N/W	RX Tone/NAC	TX Frequency N/W	TX Tone/NAC	Mode
COMMAND	PIZONA COM RPT	170.0000 N		166.6750 N	136.5	A
COMMAND	NORTH T3	173.800 N		165.0125 N	131.8	A
TACTICAL	R5 T6	168.2375 N		168.2375 N		A
AIR TO GROUND	A/G PRIMARY	169.2000 N		169.2000 N		A
AIR TO GROUND	A/G SECONDARY	168.5000 N		168.5000 N		A
<b>9. Prepared By (Resource Unit Leader)</b>			<b>Approved By (Planning Section Chief)</b>		<b>Date</b>	<b>Time</b>
KARLY DEMARS			DANA CARTER		07/01/2024	2000

**Division/Group Assignment List (ICS 204 WF)**  
 Controlled Unclassified Information//Basic

<b>1. Incident Name:</b>			<b>3.</b>				
PIZONA			<b>Branch:</b>		<b>Division/Group:</b>		
<b>2. Operational Period: DAY</b>			<b>CONTINGENCY</b>				
Date/Time From: 07/02/2024 0600 TUE	Date/Time To: 07/02/2024 2200 TUE						
<b>4. Operations Personnel</b>							
<b>OPERATIONS CHIEF</b>		JAKOB BESMER ANGEL AVILA (T)		<b>BRANCH DIRECTOR</b>			
<b>DIVISION/GROUP SUPERVISOR</b>		REPORT TO IC		<b>AIR ATTACK SUPERVISOR</b>			
<b>5. Resources Assigned this Period</b>							
Strike Team / Task Force / Resource Designator		LWD	Leader		Number Persons	Drop Off PT./Time	Pick Up PT./Time
ENG3 LNF E333 (E-6)		07/10	GREGORY HUSTEN		5	ICP/0600	ICP/2200
ENG3 CA-PNF E332 (E-7) <b>Emergency Demob 7/2</b>		07/10	ROBERT HONROTH		5	ICP/0600	ICP/2200
<b>6. Control Operations/Work Assignments:</b>							
TBD							
<b>7. Special Instructions:</b>							
RADIO USE: Use Pizona Command Repeat on fire. Use Forest North T3 for IWI communications with dispatch and routine traffic with Bishop airport.							
<b>8. Division/Group Communication Summary</b>							
Function	Channel	RX Frequency N/W	RX Tone/NAC	TX Frequency N/W	TX Tone/NAC	Mode	
COMMAND	PIZONA CMD RPT	170.0000 N		166.6750 N	136.5	A	
COMMAND	NORTH T3	173.800 N		165.0125 N	131.8	A	
TACTICAL	R5 T5	167.1125 N		167.1125 N		A	
AIR TO GROUND	A/G PRIMARY	169.2000 N		169.2000 N		A	
AIR TO GROUND	A/G SECONDARY	168.5000 N		168.5000 N		A	
<b>9. Prepared By (Resource Unit Leader)</b>			<b>Approved By (Planning Section Chief)</b>		<b>Date</b>	<b>Time</b>	
KARLY DEMARS			DANA CARTER		07/01/2024	2000	



## Division/Group Assignment List (ICS 204 WF)

Controlled Unclassified Information//Basic

<b>1. Incident Name:</b>			<b>3.</b>			
PIZONA			<b>Branch:</b>		<b>Division/Group:</b>	
<b>2. Operational Period: DAY</b>						
Date/Time From: 07/02/2024 0600 TUE		Date/Time To: 07/02/2024 2200 TUE		<b>ICP HELISPOT</b>		
<b>4. Operations Personnel</b>						
<b>OPERATIONS CHIEF</b>		JAKOB BESMER ANGEL AVILA (T)		<b>BRANCH DIRECTOR</b>		
<b>DIVISION/GROUP SUPERVISOR</b>		REPORT TO ICP HELISPOT		<b>AIR ATTACK SUPERVISOR</b>		
<b>5. Resources Assigned this Period</b>						
Strike Team / Task Force / Resource Designator		LWD	Leader	Number Persons	Drop Off PT./Time	Pick Up PT./Time
WT CA-INF E231 (E-15)		07/11	CHELSEY GRIFFIN	2	ICP/0600	ICP/2200
WT MAMMOTH E3381 (E-18)		07/10	ERIN VAUPEL	2	ICP/0600	ICP/2200
AMB3 - EMERGENCY 47 (E-19)		07/11	ANDREW BELK	2	ICP/0600	ICP/2200
<b>6. Control Operations/Work Assignments:</b>						
Water tenders: Provide dust abatement as requested.						
Ambulance: Stage for emergency incidents.						
<b>7. Special Instructions:</b>						
RADIO USE: Use Pizona Command Repeat on fire. Use Forest North T3 for IWI communications with dispatch and routine traffic with Bishop airport.						
<b>8. Division/Group Communication Summary</b>						
Function	Channel	RX Frequency N/W	RX Tone/NAC	TX Frequency N/W	TX Tone/NAC	Mode
COMMAND	PIZONA CMD RPT	170.0000 N		166.6750 N	136.5	A
COMMAND	NORTH T3	173.800 N		165.0125 N	131.8	A
TACTICAL	R5 T5	167.1125 N		167.1125 N		A
AIR TO GROUND	A/G PRIMARY	169.2000 N		169.2000 N		A
AIR TO GROUND	A/G SECONDARY	168.5000 N		168.5000 N		A
<b>9. Prepared By (Resource Unit Leader)</b>			<b>Approved By (Planning Section Chief)</b>		<b>Date</b>	<b>Time</b>
KARLY DEMARS			DANA CARTER		07/01/2024	2000

**Division/Group Assignment List (ICS 204 WF)**  
**Controlled Unclassified Information//Basic**

<b>1. Incident Name:</b>				<b>3.</b>		
PIZONA				<b>Branch:</b>	<b>Division/Group:</b>  <b>BAER TEAM</b>	
<b>2. Operational Period: DAY</b>						
Date/Time From: 07/02/2024 0600 TUE		Date/Time To: 07/02/2024 2200 TUE				
<b>4. Operations Personnel</b>						
<b>OPERATIONS CHIEF</b>		JAKOB BESMER ANGEL AVILA (T)		<b>BRANCH DIRECTOR</b>		
<b>DIVISION/GROUP SUPERVISOR</b>		TODD ELLSWORTH		<b>AIR ATTACK SUPERVISOR</b>		
<b>5. Resources Assigned this Period</b>						
Strike Team / Task Force / Resource Designator		LWD	Leader	Number Persons	Drop Off PT./Time	Pick Up PT./Time
BAER TEAM MEMBER		07/15	JOHN KNIGHT	1		
<b>6. Control Operations/Work Assignments:</b>						
<b>7. Special Instructions:</b>						
<p>Coordinate with Division Supervisors when entering and leaving divisions.</p> <p>Use appropriate Division Tactical frequencies when entering divisions - see ICS 205 Incident Radio Communications Plan.</p> <p>Coordinate with ICs for flight requests and coordination/collaboration of BAER activities.</p> <p><b>RADIO USE:</b> Use Pizona Command Repeat on fire. Use Forest North T3 for IWI communications with dispatch and routine traffic with Bishop airport.</p>						
<b>8. Division/Group Communication Summary</b>						
Function	Channel	RX Frequency N/W	RX Tone/NAC	TX Frequency N/W	TX Tone/NAC	Mode
COMMAND	PIZONA CMD RPT	170.0000 N		166.6750 N	136.5	A
COMMAND	NORTH T3	173.800 N		165.0125 N	131.8	A
AIR TO GROUND	A/G PRIMARY	169.2000 N		169.2000 N		A
<b>9. Prepared By (Resource Unit Leader)</b>			<b>Approved By (Planning Section Chief)</b>		<b>Date</b>	<b>Time</b>
KARLY DEMARS			DANA CARTER		07/01/2024	2000

ICS 205 INCIDENT RADIO COMMUNICATIONS PLAN		Incident Name Pizona			Date & Time Prepared 06/28/24			Operational Period Date/Time 7/2/24 0600-2200	
Only frequencies listed on this 205 are authorized for use on this incident.					Hand programmers accept all responsibility for the use of unauthorized frequencies.				
Ch #	Function	Channel Name/Trunked Radio System Talkgroup	Assignment	RX Freq N or W	RX Tone/NAC	TX Freq N or W	Tx Tone/NAC	Mode A, D or M	Remarks
1	Command	Pizona CMD RPT		170.0000 N		166.6750 N	T4,136.5	A	Command on Fire
2	Command	Forest North T3		173.8000 N		165.0125 N	T3,131.8	A	IWI Communications with Dispatch and Routine Communication with Helibase
3	Tactical	R5 T5		167.1125 N		167.1125 N		A	
4	Tactical	R5 T6		168.2375 N		168.2375 N		A	
5	A/G	A/G Primary		169.2000 N		169.2000 N		A	
6	A/G	A/G Secondary		168.5000 N		168.5000 N		A	
7								A	
8								A	
9								A	
10								A	
11								A	
12								A	
13								A	
14								A	
15	MEDICAL	CALCORD		156.0750 N		156.0750 N	T6,156.7	A	
16	Air Guard	AIR GUARD		168.6250 N		168.6250 N	T1,110.9	A	Urgent Aircraft Contact
17								A	
18								A	
19								A	
20	Air Guard	AIR GUARD		168.6250 N		168.6250 N	T1,110.9	A	Urgent Aircraft Contact
Approved By & Position Title									
Convention calls for frequencies to show four digits to the right of the decimal point, followed by either an "N" or a "W", N being Narrow, W being Wide band Mode refers to either "A" or "D" indicating analog or digital (e.g. Project 25) or "M" indicating mixed mode. All channels are shown as if programmed in a base station, mobile or portable radio. Repeater and base stations will be programmed with the Rx and Tx reversed.								OST=Operator Selectable Tone	

## AIR OPERATIONS SUMMARY (ICS 220)

<b>1. Incident Name:</b>		<b>2. Operational Period:</b> Date From: _____ Date To: _____ Time From: _____ Time To: _____				<b>3. Sunrise:</b> _____ <b>Sunset:</b> _____	
<b>4. Remarks</b> (safety notes, hazards, air operations special equipment, etc.):			<b>5. Ready Alert Aircraft:</b> Medivac: _____ New Incident: _____			<b>6. Temporary Flight Restriction Number:</b> Altitude: _____ Center Point: _____	
			<b>8. Frequencies:</b>		AM	FM	<b>9. Fixed-Wing</b> (category/kind/type, make/model, N#, base):  Air Tactical Group Supervisor Aircraft: _____
			Air/Air Fixed-Wing				
<b>7. Personnel:</b>	Name:	Phone Number:	Air/Air Rotary-Wing – Flight Following				
Air Operations Branch Director			Air/Ground				
Air Support Group Supervisor			Command			Other Frequencies: _____	
Air Tactical Group Supervisor			Deck Coordinator				
Helicopter Coordinator			Take-Off & Landing Coordinator				
Helibase Manager			Air Guard				
<b>10. Helicopters</b> (use additional sheets as necessary):							
FAA N#	Category/Kind/Type	Make/Model	Base	Available	Start	Remarks	
<b>11. Prepared by:</b> Name: _____ Position/Title: _____ Signature: _____							
<b>ICS 220, Page 1</b>			Date/Time: _____				

## AIR OPERATIONS SUMMARY (ICS 220)

<b>1. Incident Name:</b>	<b>2. Operational Period:</b> Date From: _____ Date To: _____ Time From: _____ Time To: _____	<b>3. Sunrise:</b> _____ <b>Sunset:</b> _____
--------------------------	---	---

12. Task/Mission/Assignment (category/kind/type and function includes: air tactical, reconnaissance, personnel transport, search and rescue, etc.):				
Category/Kind/Type and Function	Name of Personnel or Cargo (if applicable) or Instructions for Tactical Aircraft	Mission Start	Fly From	Fly To

11. Prepared by: Name: _____	Position/Title: _____	Signature: _____
------------------------------	-----------------------	------------------

ICS 220, Page 2	Date/Time: _____
-----------------	------------------

## Command Presence

# LEAD Time



Leaders often face difficult problems for which there are no simple, clear-cut, by-the-book solutions. In these situations, leaders must use their knowledge, skill, experience, education, values, and judgment to make decisions and take or direct action. Command presence is one element of a leader's effectiveness.

Command presence is the way leaders present themselves to others. More than anything else, the leader's command presence sets the tone for the command climate within an organization. Command climate refers to the environment within the influence of a particular leader. A good command climate is characterized by open communication, mutual trust and respect, freedom to raise issues and engage in debate, clear and attainable goals, and teamwork.

Character is the foundation of command presence. Leaders reveal their character in every interaction. Leaders must display a combination of personal attributes and behaviors that communicate to others that they are worthy of trust and respect.

Demeanor is another component of command presence that speaks volumes to others. Poise and self-assurance play a large part in your ability as a leader to influence the actions of others.

Fire leaders take charge when in charge, lead from the front, and act decisively in order to inspire confidence among team members. In times of crisis, a leader's command presence can be the critical factor in determining whether a team succumbs to pressures and dangers, or stays focused, seizing an opportunity to overcome and succeed.

## Discussion Points

- Can you think of a leader with strong command presence? What were some of the behaviors that they exhibited?
- Does command presence look different for different situations? Explain.
- How do we develop command presence?
- Is command presence reflected in the 10 Standard Firefighting Orders?

## MEDICAL PLAN (ICS 206)

<b>1. Incident Name:</b>	<b>2. Operational Period:</b> Date From: _____ Time From: _____	Date To: _____ Time To: _____
--------------------------	--	----------------------------------

3. Medical Aid Stations:			
Name	Location	Contact Number(s)/Frequency	Paramedics on Site?
			<input type="checkbox"/> Yes <input type="checkbox"/> No
			<input type="checkbox"/> Yes <input type="checkbox"/> No
			<input type="checkbox"/> Yes <input type="checkbox"/> No
			<input type="checkbox"/> Yes <input type="checkbox"/> No
			<input type="checkbox"/> Yes <input type="checkbox"/> No
			<input type="checkbox"/> Yes <input type="checkbox"/> No

4. Transportation (indicate air or ground):			
Ambulance Service	Location	Contact Number(s)/Frequency	Level of Service
			<input type="checkbox"/> ALS <input type="checkbox"/> BLS
			<input type="checkbox"/> ALS <input type="checkbox"/> BLS
			<input type="checkbox"/> ALS <input type="checkbox"/> BLS
			<input type="checkbox"/> ALS <input type="checkbox"/> BLS

5. Hospitals:							
Hospital Name	Address, Latitude & Longitude if Helipad	Contact Number(s)/Frequency	Travel Time		Trauma Center	Burn Center	Helipad
			Air	Ground			
					<input type="checkbox"/> Yes Level: _____	<input type="checkbox"/> Yes <input type="checkbox"/> No	<input type="checkbox"/> Yes <input type="checkbox"/> No
					<input type="checkbox"/> Yes Level: _____	<input type="checkbox"/> Yes <input type="checkbox"/> No	<input type="checkbox"/> Yes <input type="checkbox"/> No
					<input type="checkbox"/> Yes Level: _____	<input type="checkbox"/> Yes <input type="checkbox"/> No	<input type="checkbox"/> Yes <input type="checkbox"/> No
					<input type="checkbox"/> Yes Level: _____	<input type="checkbox"/> Yes <input type="checkbox"/> No	<input type="checkbox"/> Yes <input type="checkbox"/> No
					<input type="checkbox"/> Yes Level: _____	<input type="checkbox"/> Yes <input type="checkbox"/> No	<input type="checkbox"/> Yes <input type="checkbox"/> No

<b>6. Special Medical Emergency Procedures:</b>          <input type="checkbox"/> Check box if aviation assets are utilized for rescue. If assets are used, coordinate with Air Operations.
---

<b>7. Prepared by (Medical Unit Leader):</b> Name: _____ Signature: _____
---

<b>8. Approved by (Safety Officer):</b> Name: _____ Signature: <u>/s/ Jayson Smith</u>
--

ICS 206	IAP Page _____	Date/Time: _____
---------	----------------	------------------

# Finance Message

Finance Email: [2024.pizona.finance@firenet.gov](mailto:2024.pizona.finance@firenet.gov)

SUBJECT: Include Key Word **TIME** for Overhead, Crews & Cooperators

SUBJECT: Include Key Word **EQUIPMENT** for Contract Resources

SUBJECT: Include Key Word **COST** for Buying Team, Aircraft

SUBJECT: Include Key Word **COMP** for Comp/Claims

SUBJECT: Include Key Word **CHECK IN** for ROs, Casual Hire, Red Cards

Finance Contact Number: To Be Determined

## FINANCE CHECK IN:

PLEASE ENSURE THE BELOW DOCUMENTS ARE EMAILED TO [2024.PIZONA.FINANCE@FIRENET.GOV](mailto:2024.PIZONA.FINANCE@FIRENET.GOV)

Overhead, Crews & Cooperator Resources	Contract Resources
<ul style="list-style-type: none"><li>• <b>Check-In:</b> Crew Manifest, Cooperative Agreement (if applies), AD Hire Letter, Resource Order</li><li>• <b>Daily:</b> Crew Time Report (CTR), Shift Tickets</li><li>• <b>Demob:</b> Signed OF288, Final Equipment Use Invoice (Cooperator)</li></ul>	<ul style="list-style-type: none"><li>• <b>Check-In:</b> Resource Order, Full Contract/Agreement, Certifications (<i>if required</i>), Pre-Inspection</li><li>• <b>Daily:</b> Shift Tickets, receipts (fuel issues, claims, hotels, etc.)</li><li>• <b>Demob:</b> Contractor Evaluations, Final Shift Tickets and receipt(s) for Addition/Deductions, Post-Inspection, Final Signed Invoices</li></ul>

## REMINDERS

- ★ PLEASE SHOW YOUR LUNCH BREAK – IF NO BREAK SHOWN IT **\*MUST\*** BE JUSTIFIED IN COMMENTS
- ★ PLEASE ENSURE YOU INCLUDE LOCATION OF WHERE YOU ARE WORKING (BRANCH OR DIVISION) ON CTR OR SHIFT TICKET
- ★ PLEASE USE MILITARY TIME (0001-2400)
- ★ WHEN CLAIMING HAZARD PAY YOU MUST INCLUDE THE SUPPRESSION ACTION BEING PERFORMED. THIS INCLUDES OPERATIONS WHICH DIRECTLY SUPPORT CONTROL OF FIRE (E.G., ACTIVITIES TO EXTINGUISH THE FIRE, FIREFIGHTING, GROUND SCOUTING, SPOT FIRE PATROLLING, SEARCH AND RESCUE OPERATIONS, AND BACKFIRING). – PER PMS902 – YELLOW BOOK
- ★ **Steps to turn a picture into a PDF on Android**
  - Open your web browser and navigate to the convert JPG to PDF tool.
  - Tab the button labeled “select a file” and choose your picture.
  - The tool automatically converts your picture to a PDF.
  - Download your freshly converted PDF
- ★ **Steps to turn a picture into a PDF on iPhone**
  - Open Notes and select a note or create a new one.
  - Tap the Camera button, then tap Scan Documents
  - Place your document in view of the camera.
  - If your device is in Auto mode, your document will automatically scan. If you need to manually capture a scan, tap the Shutter button or press one of the Volume buttons. Then drag the corners to adjust the scan to fit the page, then tap Keep Scan.
  - Tap Save or add additional scans to the document



# PIZONA FIRE

CA-INF-000911

## DEMOBILIZATION CHECK-OUT PROCESS

This incident is using a virtual checkout process for demobilization. **Please do not leave the incident until the follow steps have been completed!**

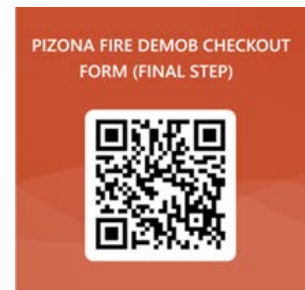
1. **48 hours prior** to demobilization date, please ensure that:  
Your incident supervisor has submitted a [Demob Request Form](#).
  - in coordination with the Demob unit.
  - If you need a flight arranged for you, please submit a [Flight](#) Request Form.
  
2. **On your demob date**, please check out with the following units.
  - Supply Unit – Return gear and supplies.
  - Ground Support/Weed Wash – Return pool NERV rentals, receive inspections, etc.
  - Communications Unit – Return Radios and other communications equipment.
  - Time/Finance – Ensure that all CTRs and/or shift tickets have been submitted and **you have received your final, signed OF-288 Time Report or OF-286 invoice.**
  
3. **Once you have completed the above steps**, please fill out the [Demob Check out Form](#) and contact the Demob Unit Leader to confirm your release from the incident. **PLEASE DO NOT FILL OUT THE DEMOB RELEASE FORM UNTIL ALL PRIOR STEPS BEEN COMPLETED!**  
Demob Unit Leader: (208) 781-6146, [2024.pizona.demob@firenet.gov](mailto:2024.pizona.demob@firenet.gov)



Demob Request Form



Flight Request Form



Demob Checkout Form

**TENTATIVE RELEASE**

**PIZONA US-CA-INF-000911**

07/02/2024

**OVERHEAD**

O-66	1200	(PIOC )	COX, LISA
O-24	1400	(SMKJ)	ADAMS, CORY
O-25	1400	(SMKJ)	BESMER, JAKOB
O-26	1400	(SMKJ)	BOBBA, DILEEP
O-27	1400	(SMKJ)	EMERSON, MEGAN
O-28	1400	(SMKJ)	MAY, JESSE T
O-29	1400	(SMKJ)	OLIVARES, ENRIQUE
O-30	1400	(SMKJ)	SURGENOR, CHRISTOPHER

07/03/2024

**CREWS**

C-1	0800	(CR2I)	CR2I - GROVELAND CREW 4
-----	------	--------	-------------------------

07/04/2024

**CREWS**

C-7	0800	(CR2I)	CR2I - CACND - FOLSOM LAKE
C-4	1800	(CRW1)	CRW1 - HELENA IHC (C-4)

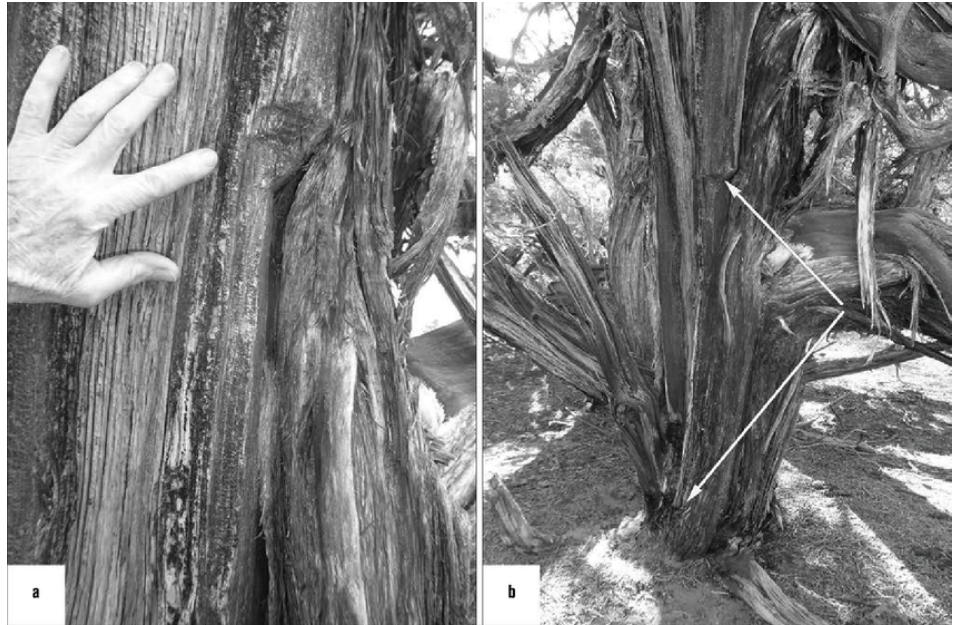
# Pizona Fire Resource Message

7/2/2024

## Cultural Resources

The area of the fire has been used by indigenous peoples since time immemorial. The cultural resources in the fire area are unknown, so please work with the fireline resource advisors (REAFs) to protect them. Cultural resources are a NON-RENEWABLE resource—once they are lost or destroyed, there is no way to bring them back or restore them.

- If you think you have found a cultural site or artifact, please document the coordinates, take a photo, and leave everything where you found it. The collection of artifacts on Federal Land is illegal and erases indigenous people's cultural history.
- Report your findings to a REAF, but please do not share with anyone else—or post the coordinates or photos of your discovery online.

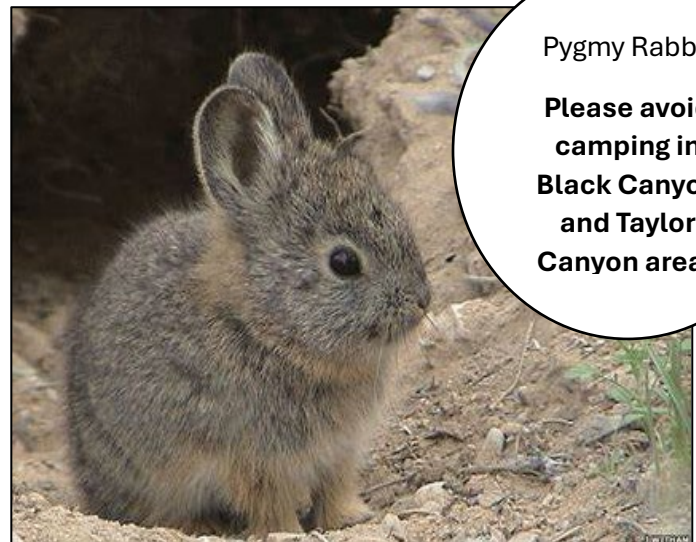


**Photo:** Juniper bow stave tree with arrows pointing to chop marks.

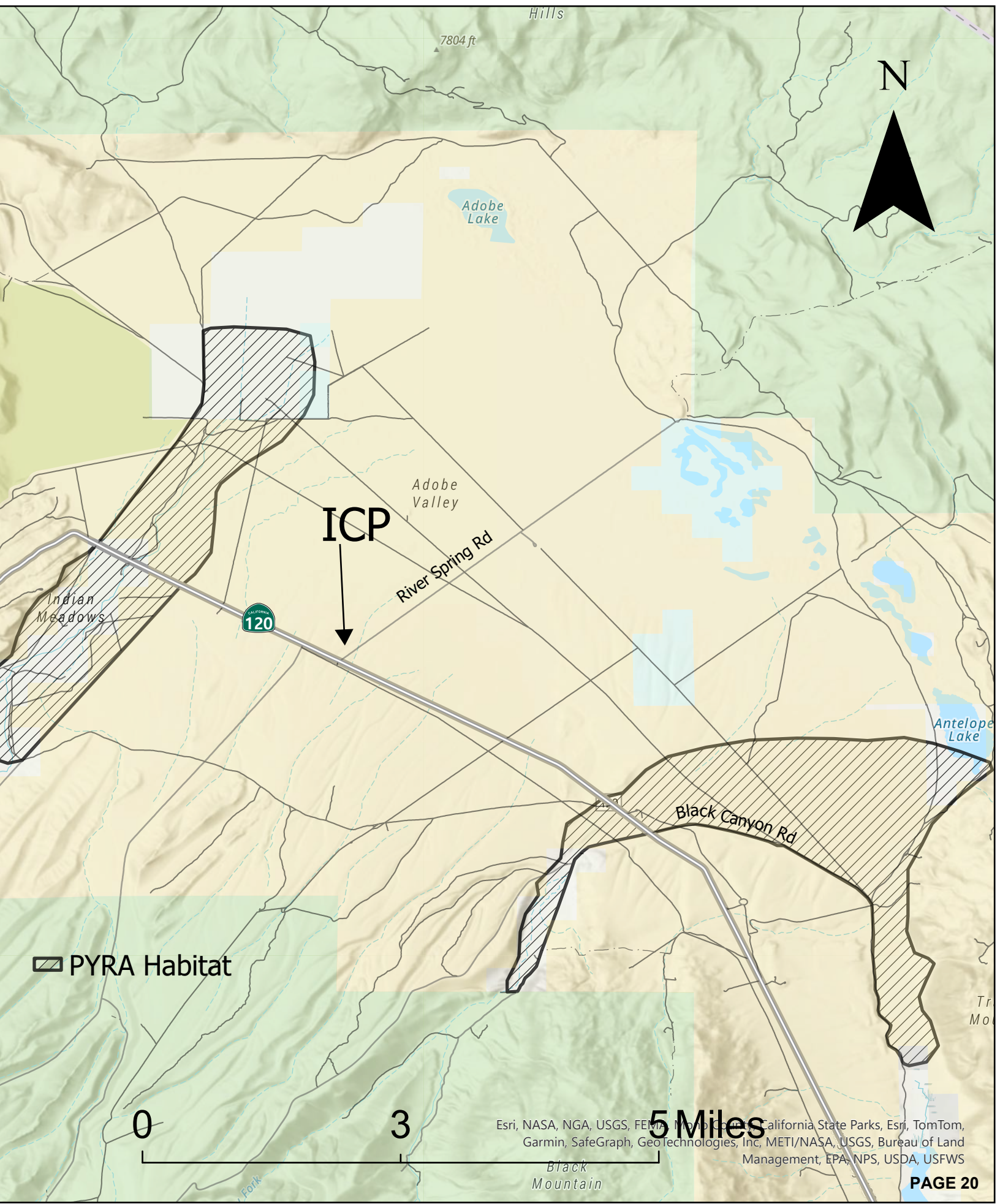
Credit: Kevin Smith and Constance Millar 2017

## ICP, Staging and Camping Areas

- Select campsites and sleeping areas well-outside of the Black Canyon and Taylor Canyon Road areas as these are occupied Pygmy Rabbit habitat (refer to map of avoidance areas in IAP).
- Use existing roads and pullouts to avoid new ground disturbance.
- Don't crush the brush! Please be mindful of this when parking on road shoulders.
- Practice "leave-no-trace" principles.
- Backhaul all trash and leave the area litter-free.
- Please do not leave unsecured food or garbage unattended—we don't want to feed the wildlife.



# Pizona Fire: Pygmy Rabbit Habitat



 PYRA Habitat

## ACTIVITY LOG (ICS 214)

<b>1. Incident Name:</b>		<b>2. Operational Period:</b> Date From: _____ Date To: _____ Time From: _____ Time To: _____																																																			
<b>3. Name:</b>	<b>4. ICS Position:</b>	<b>5. Home Agency (and Unit):</b>																																																			
<b>6. Resources Assigned:</b> <table border="1" style="width: 100%; border-collapse: collapse; margin-top: 5px;"> <thead> <tr> <th style="width: 33%;">Name</th> <th style="width: 33%;">ICS Position</th> <th style="width: 34%;">Home Agency (and Unit)</th> </tr> </thead> <tbody> <tr><td> </td><td> </td><td> </td></tr> <tr><td> </td><td> </td><td> </td></tr> <tr><td> </td><td> </td><td> </td></tr> <tr><td> </td><td> </td><td> </td></tr> <tr><td> </td><td> </td><td> </td></tr> <tr><td> </td><td> </td><td> </td></tr> <tr><td> </td><td> </td><td> </td></tr> <tr><td> </td><td> </td><td> </td></tr> <tr><td> </td><td> </td><td> </td></tr> <tr><td> </td><td> </td><td> </td></tr> </tbody> </table>				Name	ICS Position	Home Agency (and Unit)																																															
Name	ICS Position	Home Agency (and Unit)																																																			
<b>7. Activity Log:</b> <table border="1" style="width: 100%; border-collapse: collapse; margin-top: 5px;"> <thead> <tr> <th style="width: 15%;">Date/Time</th> <th style="width: 85%;">Notable Activities</th> </tr> </thead> <tbody> <tr><td> </td><td> </td></tr> <tr><td> </td><td> </td></tr> <tr><td> </td><td> </td></tr> <tr><td> </td><td> </td></tr> <tr><td> </td><td> </td></tr> <tr><td> </td><td> </td></tr> <tr><td> </td><td> </td></tr> <tr><td> </td><td> </td></tr> <tr><td> </td><td> </td></tr> <tr><td> </td><td> </td></tr> <tr><td> </td><td> </td></tr> <tr><td> </td><td> </td></tr> <tr><td> </td><td> </td></tr> <tr><td> </td><td> </td></tr> <tr><td> </td><td> </td></tr> <tr><td> </td><td> </td></tr> <tr><td> </td><td> </td></tr> <tr><td> </td><td> </td></tr> <tr><td> </td><td> </td></tr> <tr><td> </td><td> </td></tr> <tr><td> </td><td> </td></tr> <tr><td> </td><td> </td></tr> <tr><td> </td><td> </td></tr> <tr><td> </td><td> </td></tr> </tbody> </table>				Date/Time	Notable Activities																																																
Date/Time	Notable Activities																																																				
<b>8. Prepared by:</b> Name: _____ Position/Title: _____ Signature: _____																																																					
<b>ICS 214, Page 1</b>		Date/Time: _____																																																			

# MEDICAL PLAN (ICS 206 WF)

Controlled Unclassified Information//Basic

## Medical Incident Report

**FOR A NON-EMERGENCY INCIDENT, WORK THROUGH CHAIN OF COMMAND TO REPORT AND TRANSPORT INJURED PERSONNEL AS NECESSARY.**

**FOR A MEDICAL EMERGENCY: IDENTIFY ON-SCENE INCIDENT COMMANDER BY NAME AND POSITION AND ANNOUNCE "MEDICAL EMERGENCY" TO INITIATE RESPONSE FROM IMT COMMUNICATIONS/DISPATCH.**

Use the following items to communicate situation to communications/dispatch.

**1. CONTACT COMMUNICATIONS / DISPATCH (Verify correct frequency prior to starting report)**

*Ex: "Communications, Div. Alpha. Stand-by for Emergency Traffic."*

**2. INCIDENT STATUS: Provide incident summary (including number of patients) and command structure.**

*Ex: "Communications, I have a Red priority patient, unconscious, struck by a falling tree. Requesting air ambulance to Forest Road 1 at (Lat./Long.) This will be the Trout Meadow Medical, IC is TFLD Jones. EMT Smith is providing medical care."*

Severity of Emergency / Transport Priority	<input type="checkbox"/> RED / PRIORITY 1 Life or limb threatening injury or illness. Evacuation need is IMMEDIATE <i>Ex: Unconscious, difficulty breathing, bleeding severely, 2° – 3° burns more than 4 palm sizes, heat stroke, disoriented.</i> <input type="checkbox"/> YELLOW / PRIORITY 2 Serious Injury or illness. Evacuation may be DELAYED if necessary. <i>Ex: Significant trauma, unable to walk, 2° – 3° burns not more than 1-3 palm sizes.</i> <input type="checkbox"/> GREEN / PRIORITY 3 Minor Injury or illness. Non-Emergency transport <i>Ex: Sprains, strains, minor heat-related illness.</i>	
Nature of Injury or Illness & Mechanism of Injury		<i>Brief Summary of Injury or Illness (Ex: Unconscious, Struck by Falling Tree)</i>
Evacuation Request		<i>Air Ambulance / Short Haul/Hoist Ground Ambulance / Other</i>
Patient Location		<i>Descriptive Location &amp; Lat. / Long. (WGS84)</i>
Incident Name		<i>Geographic Name + Medical (Ex: Trout Meadow Medical)</i>
On-Scene Incident Commander		<i>Name of on-scene IC of Incident within an Incident (Ex: TFLD Jones)</i>
Patient Care		<i>Name of Care Provider (Ex: EMT Smith)</i>

**3. INITIAL PATIENT ASSESSMENT: Complete this section for each patient as applicable (start with the most severe patient)**

Patient Assessment: See IRPG PAGE 106

Treatment:

**4. EVACUATION PLAN:**

Evacuation Location (if different): (Descriptive Location (drop point, intersection, etc.) or Lat. / Long.) Patient's ETA to Evacuation Location:

Helispot / Extraction Site Size and Hazards:

**5. ADDITIONAL RESOURCES / EQUIPMENT NEEDS:**

*Example: Paramedic/EMT, crews, immobilization devices, AED, oxygen, trauma bag, IV/fluid(s), splints, rope rescue, wheeled litter, HAZMAT, extrication*

**6. COMMUNICATIONS: Identify State Air/Ground EMS Frequencies and Hospital Contacts as applicable**

Function	Channel Name/Number	Receive (RX)	Tone/NAC *	Transmit (TX)	Tone/NAC *
COMMAND					
AIR-TO-GRND					
TACTICAL					

**7. CONTINGENCY: Considerations: If primary options fail, what actions can be implemented in conjunction with primary evacuation method? Be thinking ahead..**

**8. ADDITIONAL INFORMATION: Updates/Changes, etc.**

**REMEMBER:** Confirm ETAs of resources ordered. Act according to your level of training. Be Alert. Keep Calm. Think Clearly. Act Decisively.