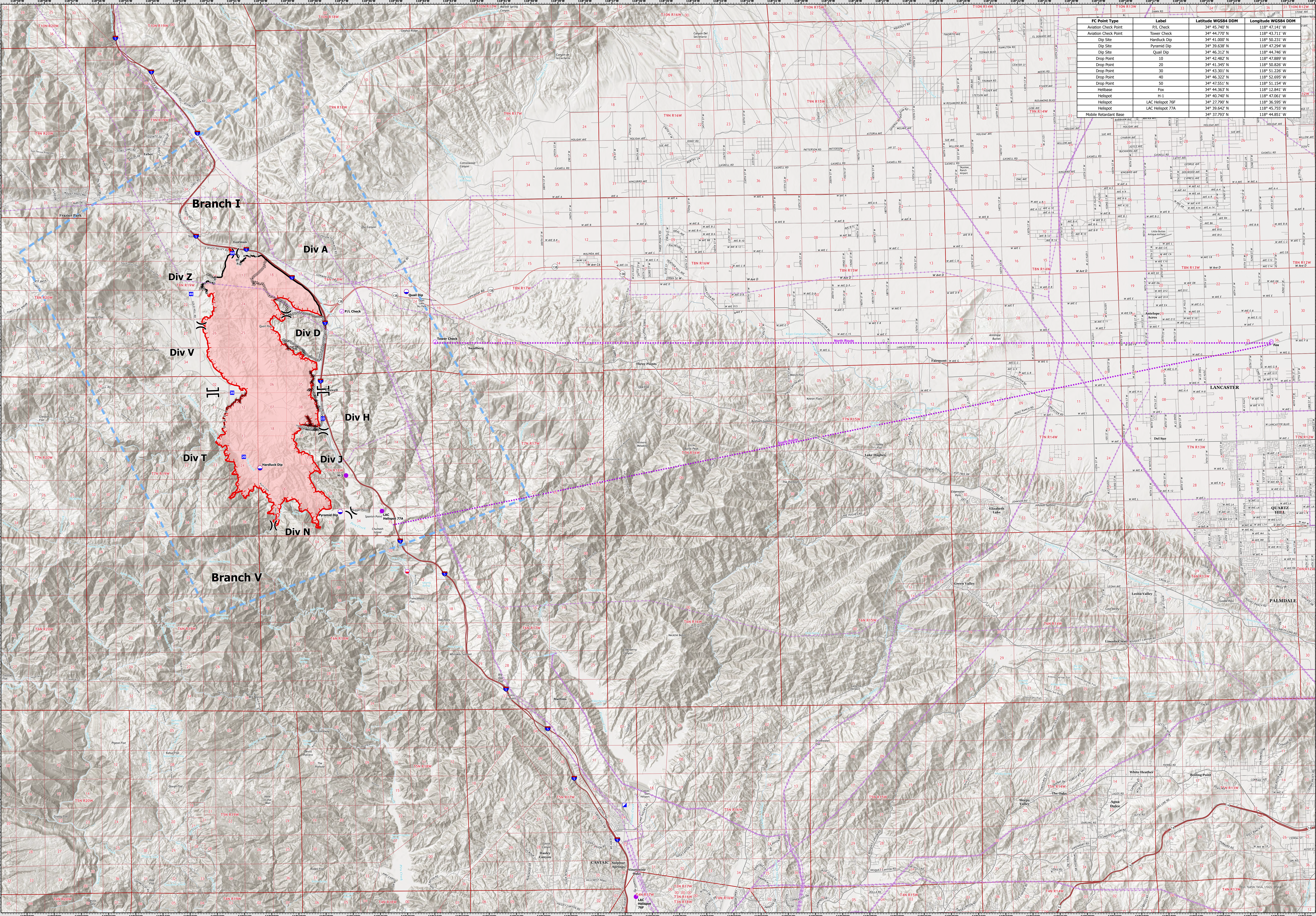


FC Point Type	Label	Latitude WGS84 DDM	Longitude WGS84 DDM
Aviation Check Point	PYL Check	34° 45.740' N	118° 47.141' W
Aviation Check Point	Tower Check	34° 44.770' N	118° 43.711' W
Dip Site	Harduck Dip	34° 41.000' N	118° 50.231' W
Dip Site	Pyramid Dip	34° 39.638' N	118° 47.294' W
Dip Site	Quail Dip	34° 46.312' N	118° 44.740' W
Drop Point	10	34° 40.402' N	118° 47.289' W
Drop Point	20	34° 41.345' N	118° 50.826' W
Drop Point	30	34° 43.301' N	118° 51.226' W
Drop Point	40	34° 46.322' N	118° 52.695' W
Drop Point	50	34° 47.551' N	118° 51.154' W
Helibase	Fox	34° 44.363' N	118° 42.841' W
Helibase	H-1	34° 40.740' N	118° 47.081' W
Helispot	LAC Helispot 76F	34° 27.790' N	118° 36.595' W
Helispot	LAC Helispot 77A	34° 39.642' N	118° 45.755' W
Mobile Retardant Base		34° 37.793' N	118° 44.851' W



Branch I

Div Z

Div D

Div V

Div H

Div T

Div J

Div N

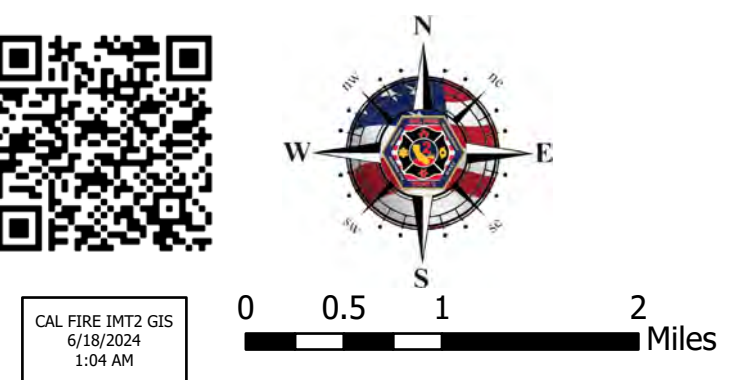
Branch V

AIR OPERATIONS

Post Incident
CA-LAC 205253
6/18/2024

- Wildfire Perimeter
- Contained
- Uncontained
- Contained Dozer Line
- Completed Hand Line
- Completed Road as Line
- Temporary Flight Restriction
- Aviation Routes
- Transmission Lines
- Aviation Check Point
- Mobile Retardant Base
- Helispot
- Helibase
- Dip Site
- Drop Point
- Incident Command Post
- Division Break
- Branch Break

Air Operations
Post Incident
CA-LAC 205253
6/18/2024



Air Operations
Post Incident
CA-LAC 205253
6/18/2024

