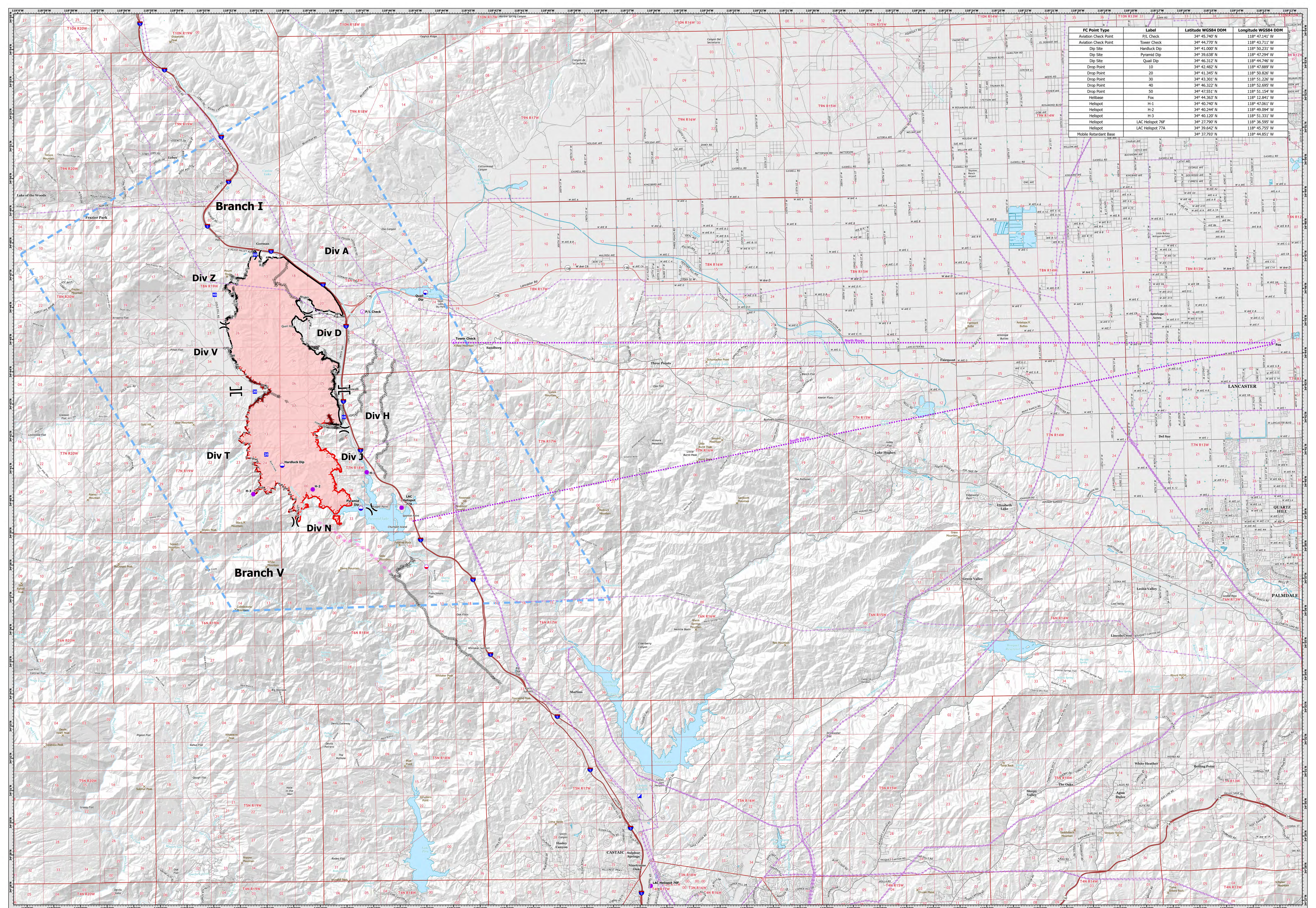


FC Point Type	Label	Latitude WGS84 DDM	Longitude WGS84 DDM
Aviation Check Point	P/L Check	34° 45.740' N	118° 47.711' W
Aviation Check Point	Tower Check	34° 44.770' N	118° 43.711' W
Dip Site	Hardluck Dip	34° 41.000' N	118° 50.231' W
Dip Site	Pyramid Dip	34° 39.638' N	118° 47.294' W
Dip Site	Quail Dip	34° 46.312' N	118° 44.740' W
Drop Point	H-1	34° 42.780' N	118° 47.280' W
Drop Point	H-2	34° 41.345' N	118° 50.826' W
Drop Point	H-3	34° 43.301' N	118° 51.226' W
Drop Point	40	34° 46.322' N	118° 52.695' W
Drop Point	50	34° 47.551' N	118° 51.154' W
Helibase	Fox	34° 44.363' N	118° 42.841' W
Helibase	H-1	34° 40.740' N	118° 47.280' W
Helibase	H-2	34° 40.244' N	118° 49.094' W
Helibase	H-3	34° 40.120' N	118° 51.331' W
Helibase	LAC Helispot 76F	34° 27.790' N	118° 36.595' W
Helibase	LAC Helispot 77A	34° 39.642' N	118° 45.755' W
Mobile Retardant Base		34° 37.793' N	118° 44.851' W



AIR OPERATIONS

Post Incident CA-LAC 205253 6/20/2024

- | | | |
|---|--|--|
| <ul style="list-style-type: none"> — Wildfire Perimeter — Contained — Uncontained — Completed Dozer Line — Completed Fuel Break | <ul style="list-style-type: none"> — Completed Hand Line — Planned Road as Line — Planned Dozer Line — Temporary Flight Restriction — Aviation Routes | <ul style="list-style-type: none"> ● Dip Site ● Drop Point ● Incident Command Post ● Mobile Retardant Base ● Helispot ● Helibase X Division Break X Branch Break |
|---|--|--|

Date: NAD83 1:62,500

CAL FIRE (SFO) GIS
6/20/2024

Air Operations
Post Incident
CA-LAC 205253
6/20/2024

Air Operations
Post Incident
CA-LAC 205253
6/20/2024