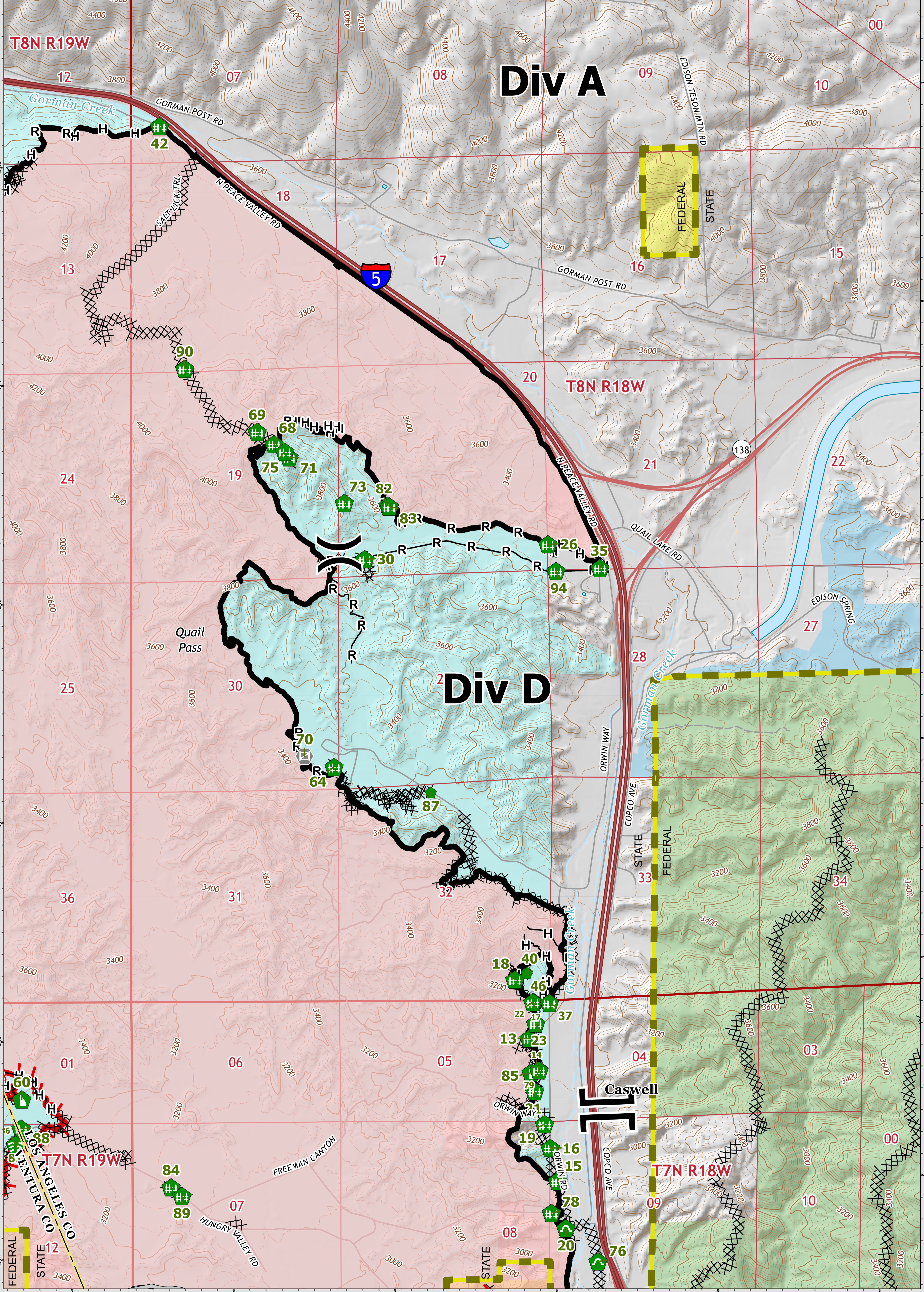


Div A

Div D



Suppression Repair Branch I East Post Incident CA-LAC-205253 June 20, 2024

CAL FIRE IMA-2 GIS
6/20/2024
1:16 AM

Datum: North American 1983
1:12,000
0 0.25 0.5 Miles



- || Branch Break
- XX Division Break
- ⊙ Gate
- ⊙ Stream Crossing
- ⊙ Repair Point
- ⊙ Fence - Cut/Damaged
- ⊙ Dozer Push
- ⊙ Culvert
- ⊙ Completed Dozer Line
- ⊙ Completed Hand Line
- ⊙ Completed Road as Line
- ⊙ Access Route
- ⊙ Contained
- ⊙ Uncontained
- ⊙ County
- ⊙ DPA
- ⊙ Bureau of Land Management
- ⊙ CA Dept. of Fish and Wildlife
- ⊙ CA Dept. of Parks and Recreation
- ⊙ USDA Forest Service

