

INCIDENT ACTION PLAN BASIN INCIDENT

CA-SNF-000731
P5R1L7 (0515)

Sunday



IAP
MAPS

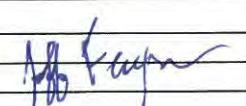
OPERATIONAL PERIOD

6/30/2024 0700

to

7/1/3024 0700

ORGANIZATION ASSIGNMENT LIST (ICS 203)

1. Incident Name: BASIN INCIDENT		2. Operational Period: Date From: 6/30/2024 Time From: 0700		Date To: 7/1/3024 Time To: 0700	
3. Incident Commander(s) and Command Staff:			7. Operation Section:		
IC/UC's	Chris Fogle, James Courtright(t)	Operations	Mark Lamont, Daniel Diaz, Dan Munsey		
Deputy	Norm Walker	Deputy Operations	Bill Sandborg		
Safety Officer	Tom Sherman, Nick Colonelli(t)	Night Ops	TBD		
Information Officer	Amanda Munsey, Kate Kramer	Staging Area			
Liaison Officer	Kevin Klar	Branch			
4. Agency/Organization Representatives:		Division/Group	A	Steve Tracy, Durk Carlisle(t)	
Agency/Organization	Name	Division/Group	D	Garth Crow	
AA	Dean Gould	Division/Group	M	Joseph Bunton	
AA (acting)	Kevin Woods	Division/Group	U	Avdul Pula, Gabe Ford(t)	
AA Rep	Jon Regelbrugge	Division/Group	Z	Josh Sunde	
Fresno SO	Cathy Curtis	Division/Group	BALCH STRUCTURE	Jason Luckenbach	
OES Rep	Van Arroyo				
Cal Fire AA Rep	Will Goodman	Division/Group	NIGHT	Ron White	
		Division/Group			
		Division/Group			
		Division/Group			
		Branch			
		Division/Group			
		Division/Group			
		Division/Group			
		Division/Group			
		Division/Group			
		Branch			
		Division/Group			
5. Planning Section:		Division/Group			
Chief	John Fisher	Division/Group			
Deputy	Jeff Ferguson(t)	Division/Group			
Resource Unit	Kelly Smyth, Jon Regner(t), Lyle Pope(t), Brad Paige(t)	Division/Group			
Situation Unit	Greg Breyer, Jeff Chung	Branch			
Documentation Unit		Division/Group			
Demobilization Unit	Wendy Christopher	Division/Group			
GISS	Dustin Glasgow	Division/Group			
FBAN	Dan Felix, Bryan Gaines(t)	Division/Group			
IMET	Pete Curran	Division/Group			
Training Tech Spec	Manny Martinez(t)	Air Operations Branch	Director: Ted Visser		
READ	Kellen Takenaka	Air Support Group Supervisor	John Steddman		
Human Resources	Janine Summy	Air Tactical Group Supervisor	Pat Bosh, Brad Sellers		
6. Logistics Section		Helibase Manager		Derek Morton	
Chief	Russ Lajoie, Richard Sheets				
Supply Unit	Skip Ireland	8. Finance/Administration Section:			
Facilities Unit	Maria Torres	Chief	Debra York, Joan Disney		
Ground Support Unit	Christian Swiggum(t)	Time Unit			
Communications Unit	Eric Dunnick, Mike S'gro	Procurement Unit			
Medical Unit	Erik Nelson	Comp/Claims Unit			
		Cost Unit			
Prepared By: Name:	Jeff Ferguson	Position/Title:	PSCC(t)	Signature:	
ICS 203		Date/Time:	6/29/2024 2300 hours		

FIRE WEATHER FORECAST

NAME: BASIN INCIDENT

FORECAST #2

UNIT: CA-SNF-000731

SHIFT: SUNDAY, JUNE 30, 2024

SIGNED: 

Pete Curran - IMET

TIME / DATE ISSUED: 1700hrs Sat 6/29/24

WEATHER DISCUSSION:

Warm and dry conditions are expected across the fire area again today with max and min temperatures running 5-8 degrees above average. Daytime RH minimums will also dip to the middle teens today. Diurnal slope winds will prevail over the fire with mostly light westerly winds today. A robust thermal inversion that has kept visibilities low with poor smoke dispersal will continue thru the morning hours before slowly dissipating by mid-afternoon. Starting next week, a long duration heat wave will bring triple digit heat to the entire region with low humidity and result in an extended period of critical fire weather from mid-week at least thru Friday. An Excessive Heat Warning is in effect starting Tuesday (7/2) thru Friday (7/5) including the Basin Fire and fire camp.

SUNDAY: Smokey under the inversion breaking mid-afternoon, then sunny, warm and dry.

MAXIMUM TEMPERATURE (deg F):

87-92 degrees

MINIMUM RELATIVE HUMIDITY:

14-20%

20 FOOT WINDS:

Terrain-driven slope winds 6-12mph early, then west 6-9mph with gusts to 13mph

Chance of Wetting Rain: 0

INVERSION: Strong inversion trapping smoke & haze over lower terrain until mid afternoon.

SUNDAY NIGHT: Warm overnight lows. Mostly clear with haze early, then smokey after 2am.

MINIMUM TEMPERATURE (deg F):

64-72 (upper/lower elevations)

MAXIMUM RELATIVE HUMIDITY:

42-48%

20 FOOT WINDS:

Terrain driven downslope winds 6-12mph. Ridgetops NE 6-12mph

Chance of Wetting Rain: 0

INVERSION: Thermal inversion developing late. Areas of smoke & haze in and over lower elevations.

MONDAY OUTLOOK:

A few degrees warmer. Smokey morning inversion continues. Light west winds 6-9mph. Strong heat wave begins on Tuesday along with an Excessive Heat Warning.

Local Weather Observations near the fire: Email Weather Observations to: firewxobs@gmail.com



FIRE BEHAVIOR FORECAST

FORECAST NUMBER: 3	TYPE OF FIRE: Wildfire
FIRE NAME: Basin	OPERATIONAL PERIOD: June 30-July 01, 2024 Day & Night Shift
DATE ISSUED: June 29, 2024	TIME ISSUED: 2400
UNIT: CA-SNF- 000731	Prepared: Dan Felix, FBAN, Bryan Gaines (t) <i>B.M.B.-S</i>

INPUTS

**** See Fire Weather Forecast for discussion and specific weather. ****

WEATHER SUMMARY: Smokey in the morning, otherwise clear.

Temp: Highs of 87-92 degrees.

RH: Minimum 14-20 percent.

Winds: Slope driven, 6-12mph early, then west 6-9mph gusts to 13mph.

Night: 64-72 degrees, RH 42-48%, down slope 6-12mph, Ridge NE 6-12mph

GENERAL

Fuels in the current fire area are predominately Grass with mixed Oak and brush, which is what the fire has taken advantage of so far. Notably the grass crop is the result of two good winters and is matted, resulting in higher resistance to control because retardant and water cannot penetrate all the way to the ground. Be aware that the fire may be creeping through the matted grass even if it seems to be controlled by retardant. Surrounding areas transition into brush, and timber with large amounts of dead and down, especially to the north near Dinky Creek. As the fire impacts these live fuels they will not support the higher rates of spread we have seen so far, the indices in live fuel and the heavies are not as severe as the average for this year. Therefore, aspect and fuels are going to be your best indicator for the Rate of Spread (ROS) you will see.

Specific areas of concern:

DIV A, D&M – The primary concern for spread is in DIV A, the area west of and in Dinky Creek where the fuels begin to transition to heavier size classes and more live fuels. While this area may be protected from general wind the drainage winds will try to push the fire up canyon during the day will increase fire progression up drainage along Dinky Creek with a chance of spotting across the creek. The west flank in this area will back against the wind to the west during the day especially in lighter fuels, and become an impact to DIV Z.

DIV U&Z – Expect continued backing to the Kings River in the western and eastern portions of each of these divisions, driving the possibility of spotting from roll out and from swirling winds, especially in the areas where the river bends. Continue to be aware of the matted grass holding heat and continuing to move at the surface.

Night: Expect downhill/down canyon spread during the night, and expect the fire to remain active well into early morning.

Air Operations: Smoke will adversely affect operations early in the day.

SAFETY

Unburned fuel between you and the fire.

Lookouts
Communications
Escape Routes
Safety Zones

BASIN FIRE

Period: 6/30-7/1/24

Shift: 0700-0700

SAFETY MESSAGE

Stay focused on the safety aspects of your assignment

- Ensure LCES is in place prior to engagement.
- Establish decision points when conditions can deteriorate.
- Take weather observations.
- Monitor the fire environment for changes in the fuel, topographic and weather elements. Forecast the fire behavior.
- Evaluate the work area for hazards, communicate hazards, mitigate or avoid the hazards.

MAJOR HAZARDS AND RISKS

STEEP TERRAIN FATIGUE SPOT FIRES	ROLLING MATERIAL DEHYDRATION BUCKET DROPS	HEAVY EQUIPMENT HAZARD TREES COMMUNICATION
--	---	--

CRITICAL FIRE WEATHER

With the upcoming forecast for very HOT temperatures and low RH can support extreme fire behavior conditions.

Also, with the upcoming extreme hot weather forecast, we need to take care of ourselves. When possible, take more breaks shade and pace ourselves.

REMEMBER!!

HYDRATE-HYDRATE

Stay Hydrated

Wake up water up!

Drink fluids before, during, and after the shifts.

For every 2 bottles of water, drink 1 bottle of Gatorade.

At 2% dehydration, performance will fall off by 10-20% and is the #1 trigger of fatigue and other heat related illness

ASSIGNMENT LIST (ICS 204 WF)

CONTROLLED UNCLASSIFIED
INFORMATION/BASIC

1. Incident Name:		2. Operational Period:				3. Branch		Division	
BASIN INCIDENT		Date From: 06/30/24	Date To: 07/01/24			A		Alpha	
		Time From: 0700	Time To: 0700						
4. Operations Personnel:									
Operations Section Chief: Mark Lamont, Daniel Diaz, Dan Munsey					Night Ops: TBD				
Branch Director:					Branch Safety: AI Goughnour				
Division/Group Supervisor: Steve Tracy, Durk Carlisle(t)					Air Attack: Pat Bosh, Brad Sellers				
5. Resources Assigned:									
** Resources Below in Bold are 12 Hour **									
Resource Identifier	ALS	LWD	Leader	Personnel	Request #	Hours	Reporting Location		
HC1 EL CARISO IHC		7/12	JOSHUA ACEVEDO	22	C-8	0700-1900	SIERRA HS ICP		
HC1 STANISLAUS IHC		7/8	BRANDON HULL	22	C-12	0700-1900	SIERRA HS ICP		
HC1 MENDOCINO IHC		7/12	ERNIE CECCON	20	C-13	0700-1900	SIERRA HS ICP		
ENG3 STF E-342			TIMMOTHY KIRKWOOD	5	E-1	0700-1900	SIERRA HS ICP		
ENG3 LPF E-352			DAVID CHAVEZ	5	E-7	0700-1900	SIERRA HS ICP		
ENG3 RSF ROGUE E-311		7/1	LLYOD CRUISE	5	E-8	0700-1900	SIERRA HS ICP		
SNF PT-42			SEE RESOURCES			0700-1900	SIERRA HS ICP		
DOZ3 PVT CENTRAL SIERRA		7/12	GAB SANCHEZ	4	E-61	0700-1900	SIERRA HS ICP		
DOZ2 SNF 2			JOSH PERKINS	3	E-13	0700-1900	SIERRA HS ICP		
DOZ2 PVT SUMMITLAND 58		7/12	MARK CAMPBELL	2	E-58	0700-1900	SIERRA HS ICP		
GRD1 ASHBROOK		7/12	JUSTIN CROSS	2	E-80	0700-1900	SIERRA HS ICP		
GRD1 CUTTING EDGE		7/12	ZACH MAY	2	E-79	0700-1900	SIERRA HS ICP		
AMBU MA782 (ALS Ambulance)		7/11	CHAD ADKINS	2	E-14	0700-1900	SIERRA HS ICP		
6. Work Assignments:									
<ul style="list-style-type: none"> - Scout Sacate Ridge as well as the 11S004 and 11S002 roads. - Assist Division Z with road prep as needed along Kings River. - Look for opportunities to improve existing containment lines. - Scout for opportunities to install new containment lines. 									
7. Special Instructions:									
<ul style="list-style-type: none"> - Identify drop point locations. - Scout and identify road hazards and need for roadway repairs. - Identify potential staging and parking areas. - Identify draft site locations. - Backhaul all trash and excess equipment. 									
8. Communications									
Name	Ch	Function	Rx Freq	Rx Tone	Tx Freq	Tx Tone	Mode	Notes	
NIFC C2	1	COMMAND	170.4500	0.0	168.1000	(T2) 123.0	A	FENCE MEADOW LOOKOUT	
NIFC T3	3	TACTICAL	168.6000	0.0	168.6000	(T2) 123.0	A		
A/G CMD	14	A/G CMD	170.0750	0.0	170.0750	0.0	A		
CALCORD	15	TACTICAL	156.0750	(T6) 156.7	156.0750	(T6) 156.7			
AIRGUARD	16	EMERGENCY	168.6250	0.0	168.6250	(T1) 110.9	EMERGENCY		
9. Prepared by: Name:									
Kelly Smyth					RESL				
Signature:									
ICS 204		Date/Time: 6/29/2024			2200		Personnel Count: 94		

ICS 205 - INCIDENT RADIO COMMUNICATIONS PLAN

1. Incident Name: BASIN INCIDENT Incident Channels		2. Date/Time Prepared Date: 06/29/2024 Time: 2113		3. Operational Period: Date From: 06/30/24 Time From: 0700		Date To: 07/01/24 Time To: 0700	
---	--	--	--	---	--	--	--

4. Communications									
Ch#	Function	Name	Assigned To	Rx Freq	Rx Tone	Tx Freq	Tx Tone	Mode	Notes
1	COMMAND	NIFC C2	ALL DIVS	170.4500	0.0	168.1000	(T2) 123.0	A	FENCE MEADOW LOOKOUT
2	COMMAND	NIFC C8	ALL DIVS	169.5375	0.0	164.7125	(T2) 123.0	A	DELILAH LOOKOUT
3	TACTICAL	NIFC T3	DIV A / NIGHT	168.6000	0.0	168.6000	(T2) 123.0	A	
4	TACTICAL	NIFC T4	DIV D	166.7250	0.0	166.7250	(T2) 123.0	A	
5	TACTICAL	NIFC T5	DIV M	166.7750	0.0	166.7750	(T2) 123.0	A	
6	TACTICAL	NIFC T6	DIV U	168.2500	0.0	168.2500	(T2) 123.0	A	
7	TACTICAL	R5 T5	DIV Z	167.1125	0.0	167.1125	(T2) 123.0	A	
8	TACTICAL	R5 T6		168.2375	0.0	168.2375	(T2) 123.0	A	
9	TACTICAL	R5 T7	BALCH SDG	167.9625	0.0	167.9625	(T2) 123.0	A	
10	DISPATCH	SNF 4	IA / BACK UP	172.2250	0.0	164.7875	(T4) 136.5	A	TONE 4
11	DISPATCH	SNF 8	IA / BACK UP	172.2250	0.0	164.7875	(T8) 103.5	A	TONE 8
12	DISPATCH	SNF 10	IA / BACK UP	172.2250	0.0	164.7875	(T10) 107.2	A	TONE 10
13	A/G TAC	A/G TAC	ALL DIVS	169.9750	0.0	169.9750	0.0	A	
14	A/G CMD	A/G CMD	ALL DIVS	170.0750	0.0	170.0750	0.0	A	
15	TACTICAL	CALCORD	ALL DIVS	156.0750	(T6) 156.7	156.0750	(T6) 156.7	A	
16	EMERGENCY	AIRGUARD	ALL DIVS	168.6250	0.0	168.6250	(T1) 110.9	A	EMERGENCY
17									
18									
19									
20	EMERGENCY	AIRGUARD	ALL DIVS	168.6250	0.0	168.6250	(T1) 110.9	A	EMERGENCY


5. Special Instructions

6. Prepared by (Communications Unit Leader): Name: Eric Dunning - 619.339.8150		Signature: /s/ Eric Dunning	
ICS 205 - CONTROLLED UNCLASSIFIED INFORMATION//BASIC		Date/Time: 06/29/24	
		2113	

Air Operations Summary (ICS 220)

1. Incident Name: BASIN INCIDENT		2. Operational Period: Date From: 06/30/24 Date To: 07/01/24 Time From: 0700 Time To: 0700		3. Sunrise: 0539 Sunset: 2021		
4. Remarks (safety notes, hazards, air operations special equipment, etc.): <i>Multiple wires and transmission lines. Auberry Helibase 32180 Auberry Road Prather, CA, 93651 37°0 03.95 119°0 29.30</i>						
5. Ready Alert Aircraft: G820						
Medivac: CHP H-40, CHP 42		Altitude: 11000 MSL		Center Point: 4/5032		
New Incident:		8. Frequencies: AM FM		9. Fixed-Wing (category/kind/type, make/model, N#, base):		
Air/Air Fixed-Wing		169.15		Air Tactical Group Supervisor Aircraft:		
Air/Air Rotary-Wing - Flight Following		119.125		AT 15		
Air/Ground (COM) (TAC)		170.075 169.9750		Other Fixed-Wing Aircraft:		
Command				Dispatch 559-500-4544 SNFBasin2024@gmail.com		
Deck Coordinator		163.1				
Take-Off & Landing Coordinator						
Air Guard						
7. Personnel:						
Name:		Phone Number:				
Air Operations Branch Director	Ted Visser	619-981-2409				
Air Support Group Supervisor	Brent Ohlweiler John Steadman	949-633-1365 760-468-1974				
Air Tactical Group Supervisor (AT15)	Pat Bosch Brad Sellers	559-281-0533 559-287-3552				
Helicopter Coordinator	Kelly Harper	408-981-8811				
Helibase Manager	Derek Morton	951-203-8464				
10. Helicopters (use additional sheets as necessary):						
FAA N#	Category/Kind/Type	Make/Model	Base	Available	Start	Remarks
H522	TYPE 2	Bell A1++	Auberry	0830	0700	EU LongLine w/ Bucket
H534	TYPE 2	Bell A1++	Dinkey	0830	0700	EU Tank
H538	TYPE 2	Bell A1++	Auberry	0830	0700	EU Tank
8CH	TYPE 1	CH-47 D	Auberry	0830	0700	CWN Tank
7RA	TYPE 1	CH-47 D	Auberry	0830	0700	EU Tank
0FS	TYPE 1	UH-60	Auberry	0830	0700	EU Tank
2BH	TYPE 1	UH-60	Auberry	830	0700	EU Tank
H-502	TYPE 3	ASTAR B3	Auberry	830	0700	RECON
H-4TV	TYPE 3	Matt Lynch-HELCO ASTAR B2	Auberry	830	0700	HILCO
11. Prepared by: Name: Ted Visser		Position/Title: AOB		Signature: Ted Visser		
ICS 220, Page 1		Date/Time:				

INCIDENT ACTION PLAN SAFETY ANALYSIS (ICS 215A)

1. Incident Name:	2. Operational Period:	Date From: 6/30/24	Date To: 7/1/24
BASIN INCIDENT		Time From: 0700	Time To: 0700
Incident Area	Hazard/Risks	Mitigations	
ALL	Driving Hazards	Driving and potential for collision with other vehicles (civilian or fire apparatus), pedestrians, wildlife or obstructions in roadway.	
ALL	Snags	Identify potentially fire weakened trees and flag as hazardous. Coordinate with DIVS to have qualified fallers cut down hazard trees. Avoid hazard trees, particularly during high wind. Mitigate snag hazard before inserting personnel for line construction.	
ALL	Rolling Material	Be alert for roll out of burning debris that can cause fire below you. Utilize lookouts. Do not have personnel working below you while digging line.	
ALL	Aircraft use: Fixed wing and helicopters	Coordinate helicopter use with air attack and helicopter manager. Ensure that personnel are clear of drop zone. Adhere to aviation procedures and refer to IRPG.	
ALL	Heavy Equipment Operations	Maintain awareness when working near operating heavy equipment, remain withing view and communications of the operator(s).	
ALL	Medical - Lengthy patient evacuation/transport times	Plan to utilize air medical transport when transportation by ground could be extended. Stage ambulances in areas where extraction times will be extended.	
ALL	Entrapment - Spot Fire Suppression, Compromised Egress	Ensure LCES, Adhere to Fire Orders, Mitigate Watch Out Situations. Be aware of limited turn arounds for vehicles and narrow roads. Establish communications with ground crews.	
ALL	Slips/Trips/Falls	Watch footing and trip hazards. Maintain spacing while hiking and proceed slowly on steep slopes.	
ALL	Human Factors - Night Ops: Visibility, Fatigue	Once established, be aware Spike Camps may have minimal lighting at night, potential for wildlife interactions increased, and greater distances to medical treatment facilities.	
5. Prepared By:	Position/Title: SOFR	Signature: 	
ICS 215A	Date/Time: 6/29/2024 / 2030		

FINANCE MESSAGE

Finance Email: 2024.basin.finance@firenet.gov

CTR's, Shift Tickets and supporting documents can be to be mailed to the email address above. If you are unable to send documents electronically you can drop off paper copies to Finance. Please submit documents either electronic **OR** hard copy. Do not submit duplicates.

Approving Officials for CTRs & Shift Tickets please write legibly and print your name under your signature.

Contract equipment must note any down time in the remarks on the shift ticket and include your resource order at the top of the shift ticket.

All Local Government employees MUST have a MARS account to complete and submit their F-42's for reimbursement.

Authorization for Lodging ended 6/28. As of 6/29 full camp services were available and reimbursement for lodging expenses is not allowed.

Fire Replacement - For replacement of non-cache items the requesting resource will take a completed OF-213 and OF-289 to the Comp/Claims Unit Leader for review. Requests for replacement of government-issued non-standard items brought from the home unit must be accompanied by a copy of a signed JHA or RA (IIBMH Chapter 30 Page 30-5). Based on the documentation provided a determination for replacement will be made by the Finance Section Chief, IC, or INBA. Damaged items will be surrendered to the Supply Unit. Replacement for normal wear and tear is through home unit project funds. Please do not wait until demob to begin this process.

The following resources need to please check in with Finance:

REQUEST NUMBER	RESOURCE NAME	MISSING INFORMATION
E-44.6	BDF Eng 51	Need explanation on CTR
E-29	North State Heavy Equip	Need Resource Order and Agreement
E-21	Gregory Holt Pickup	Need Resource Order and Agreement
Missing	SNF Eng 342	Need E# assigned in IROC
E-31	G&J Truck Sales	Need Resource Order and Agreement

Basin Incident

Human Resource Message



June 30 ,2024

Mutual Respect

- Mutual Respect is your responsibility to treat people with dignity and respect, it is also your right to receive the same treatment.

Some things to remember while on this incident:

- Be kind and considerate to everyone in camp. Interact with all your colleagues with courtesy, politeness, and kindness. Even co-workers who don't particularly like each other can be civil and respectful, even a simple "Good morning" goes a long way.
- Let's remember that not everyone on this incident has the same sleep schedule. At night when you are in the tent sleeping area outside of camp, keep the noise to a minimum.
- Lastly, lets ensure that we are treating our base camp support teams, i.e., CCC's, food service, etc., with the courteous and respect that they deserve. They, as well as everyone else are working tirelessly to ensure that you have the adequate support that you need so we all can accomplish our mission objectives.

Janine Summy, Human Resource Specialist, 509-429-1206

"Alone, we can do little; together we can do so much."

- Helen Keller-

*NFFE Union Steward for the USFS is Randy Meyer, 530-503-5964
Randy.meyer@usda.gov. Available 24 hours daily*

PUBLIC INFORMATION

Please share photos and video from the Basin Fire to be used on the Sierra National Forest's Facebook page, Inciweb & potentially the media. Photos can be airdropped or texted to PIOs after briefing, at the PIO trailer or emailed to: 2024.basin@firenet.gov

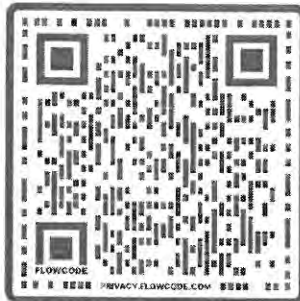
If the public or media approaches you with questions, please refer to them to our incident information phone: (559) 468-6809

Incoming mail/packages:

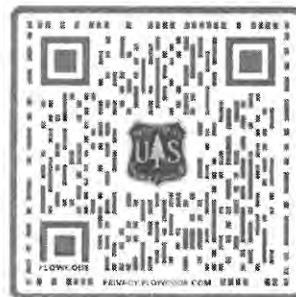
Recipient Name and Unit Designation
c/o Basin Fire Camp PIO Trailer
33326 Lodge Road
Tollhouse, CA 93667

LOST AND FOUND – Located at the Information Trailer

Facebook



Inciweb





Training Message ***Basin Fire***

Training Specialist contact information:

- Manuel Martinez
- (818)742-8439
- Email: manuel.martinez@fire.lacounty.gov

If any Trainee or Trainer has any questions or concerns, stop by the TNSP trailer or call/text me at ANYTIME.

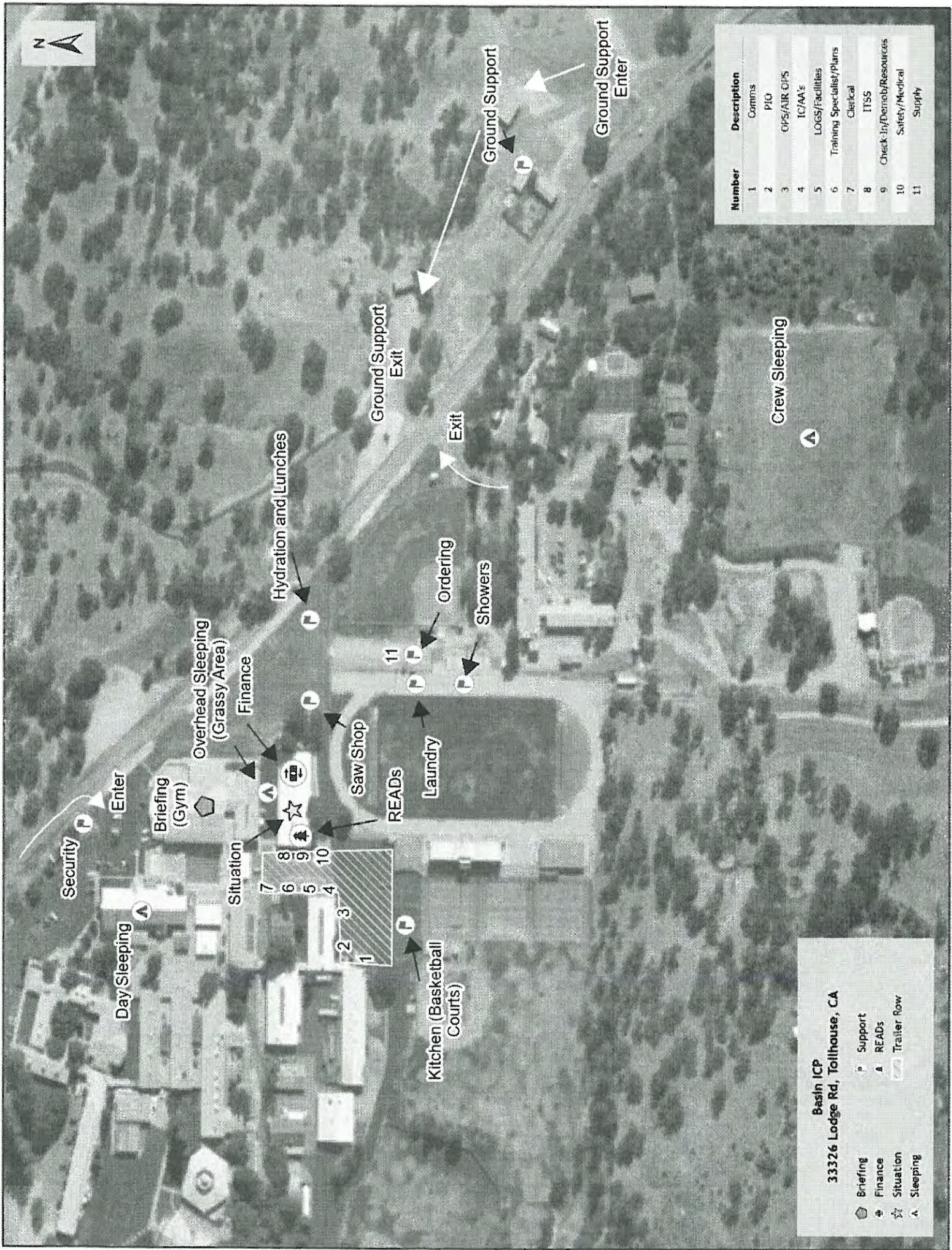
How to register as a Trainee:

1. Use the QR code below to register. If you are unable to register using the QR code, please call/text: 818-742-8439.
2. Once registered, you will receive text and email updates.
3. **Please text or email me a picture of your task book cover page and your Qualification/Red Card.**



Trainee Registration Form





Number	Description
1	Comms
2	PIO
3	OPS/AIR OPS
4	IC/AAs
5	LOGS/Facilities
6	Training Specialist/Plans
7	Clerical
8	ITSS
9	Check-In/Denoby/Resources
10	Safety/Medical
11	Supply

Basin ICP
33326 Lodge Rd, Tollhouse, CA

- Briefing
- Finance
- Situation
- Sleeping
- Support
- READS
- Trailer Row

LINE ORDER FORM

ORDER #	DATE & TIME ORDERED Received from the Line	WHO PLACED ORDER DIVS, OPS, etc...	DELIVER to (DIV, Helispot, DP, etc.) Division, Heli-Spot, Drop Point, etc.	MODE of DEVIVERY Drive, Helo, pick-up

Order Received in Communications By: _____ **TIME:** _____

Communications Relayed/Placed the Order To: _____ **TIME:** _____

Order Shipped to the Line By (Name): _____ **TIME:** _____

ITEM#	DESCRIPTION	AMOUNT
<u>1</u>	<u>1,000 Foot Hose Lay: Includes the following</u> <u>10 lengths, 1 ½" x 100' Hose. 10 lengths, 1" x 100' Hose. 10ea. 1 ½" Gated Wyes.</u> <u>10ea. 1 ½" to 1" Reducers. 10ea. 1" Nozzles.</u>	
<u>2</u>	<u>2,000 Foot Hose Lay: Includes the following</u> <u>20 lengths, 1 ½" x 100' Hose. 20 lengths, 1" x 100' Hose. 20ea. 1 ½" Gated Wyes.</u> <u>20ea. 1 ½" to 1" Reducers. 20ea. 1" Nozzles.</u>	
<u>3</u>	<u>3,000 Foot Hose Lay: Includes the following</u> <u>30 lengths, 1 ½" x 100' Hose. 30 lengths, 1" x 100' Hose. 30ea. 1 ½" Gated Wyes.</u> <u>30ea. 1 ½" to 1" Reducers. 30ea. 1" Nozzles.</u>	

ITEM#	REQUESTED ITEM	NFES#	AMOUNT	ITEM#	REQUESTED ITEM	NFES#	AMOUNT
<u>4</u>	<u>Backpack Pump, 5 gallon</u>	<u>1149</u>		<u>26</u>	<u>Batteries, "AA", (package)</u>	<u>0030</u>	
<u>5</u>	<u>Foam, 5 gallon</u>	<u>1145</u>		<u>27</u>	<u>Gasoline, Unleaded (gallon)</u>		
<u>6</u>	<u>Hose, ¾ inch, 50 ft. length</u>	<u>1016</u>		<u>28</u>	<u>Oil, 2 Cycle Mix (quart)</u>	<u>0341</u>	
<u>7</u>	<u>Hose, 1 inch, 100 ft. length</u>	<u>0966</u>		<u>29</u>	<u>Diesel, straight (gallon)</u>		
<u>8</u>	<u>Hose, 1 ½ inch, 100 ft. length</u>	<u>0967</u>		<u>30</u>	<u>Oil, Bar & Chain (gallon)</u>	<u>1880</u>	
<u>9</u>	<u>Increaser, ¾" to 1"</u>	<u>2235</u>		<u>31</u>	<u>Fusees (box)</u>	<u>0105</u>	
<u>10</u>	<u>Increaser, 1" to 1 ½"</u>	<u>0416</u>		<u>32</u>	<u>Torch, Drip Torch ea.</u>	<u>0241</u>	
<u>11</u>	<u>Nozzle, Garden ¾ inch</u>	<u>0136</u>		<u>33</u>	<u>Mix, Drip Torch 3-1, 5 gal.</u>		
<u>12</u>	<u>Nozzle, Forester, 1"</u>	<u>0024</u>		<u>34</u>	<u>Flagging, Ribbon, Color/Roll</u>		
<u>13</u>	<u>Nozzle, KK Type, 1"</u>	<u>1081</u>		<u>35</u>	<u>Washcloth, Waterless</u>	<u>0206</u>	
<u>14</u>	<u>Nozzle, KK Type, 1 ½"</u>	<u>1082</u>		<u>36</u>	<u>Water, Cubi, 5 gallon ea.</u>	<u>0048</u>	
<u>15</u>	<u>Reducer, 1" to ¾"</u>	<u>0733</u>		<u>37</u>	<u>Water, Bottled, (case)</u>		
<u>16</u>	<u>Reducer, 1 ½" to 1"</u>	<u>0010</u>		<u>38</u>	<u>Sports Drink, Gatorade (case)</u>		
<u>17</u>	<u>Tee, Hoseline, 1"x1"x ¾"</u>	<u>1809</u>		<u>39</u>	<u>Food, MRE's (12 per Box)</u>	<u>1842</u>	
<u>18</u>	<u>Tee, Hoseline, 1"x1"x 1"</u>	<u>2240</u>		<u>40</u>	<u>Pump Kit, High Pressure</u>	<u>0870</u>	
<u>19</u>	<u>Tee, Hoseline, 1 ½" x 1 ½" x 1"</u>	<u>0230</u>		<u>41</u>	<u>Pump, High Pressure</u>	<u>0148</u>	
<u>20</u>	<u>Wye, Gated, ¾" inch</u>	<u>0904</u>		<u>42</u>	<u>Pump Kit, Light Weight</u>	<u>0670</u>	
<u>21</u>	<u>Wye, Gated, 1"</u>	<u>0259</u>		<u>43</u>	<u>Sprinkler Kit</u>	<u>1048</u>	
<u>22</u>	<u>Wye, Gated, 1 ½"</u>	<u>0231</u>		<u>44</u>	<u>Pump Kit, Volume</u>	<u>6041</u>	
<u>23</u>	<u>Tank, Collapsible. Capacity Gallons?</u>			<u>45</u>	<u>Mop-Up Kit</u>	<u>0772</u>	
<u>24</u>	<u>Tank, Folding/Frame. Capacity ??</u>			<u>46</u>	<u>Fuel (gas / diesel / mix)</u>		
<u>25</u>	<u>Wrap, Structure (roll)</u>	<u>0881</u>					

Date and Time Needed	Point of Contact at Delivery Location

OTHER / NOTES:

LINE ORDER FORM

ORDER #	DATE & TIME ORDERED Received from the Line	WHO PLACED ORDER DIVS, OPS, etc...	DELIVER to (DIV, Helispot, DP, etc.) Division, Heli-Spot, Drop Point, etc.	MODE of DELIVERY Drive, Heli, pick-up

Order Received in Communications By: TIME:

Communications Relayed/Placed the Order To: TIME:

Order Shipped to the Line By (Name): TIME:

ITEM#	DESCRIPTION	AMOUNT
1	1,000 Foot Hose Lay: Includes the following 10 lengths, 1 ½" x 100' Hose. 10 lengths, 1" x 100' Hose. 10ea. 1 ½" Gated Wyes. 10ea. 1 ½" to 1" Reducers. 10ea. 1" Nozzles.	
2	2,000 Foot Hose Lay: Includes the following 20 lengths, 1 ½" x 100' Hose. 20 lengths, 1" x 100' Hose. 20ea. 1 ½" Gated Wyes. 20ea. 1 ½" to 1" Reducers. 20ea. 1" Nozzles.	
3	3,000 Foot Hose Lay: Includes the following 30 lengths, 1 ½" x 100' Hose. 30 lengths, 1" x 100' Hose. 30ea. 1 ½" Gated Wyes. 30ea. 1 ½" to 1" Reducers. 30ea. 1" Nozzles.	

ITEM#	REQUESTED ITEM	NFES#	AMOUNT	ITEM#	REQUESTED ITEM	NFES#	AMOUNT
4	Backpack Pump, 5 gallon	1149		26	Batteries, "AA", (package)	0030	
5	Foam, 5 gallon	1145		27	Gasoline, Unleaded (gallon)		
6	Hose, ¾ inch, 50 ft. length	1016		28	Oil, 2 Cycle Mix (quart)	0341	
7	Hose, 1 inch, 100 ft. length	0966		29	Diesel, straight (gallon)		
8	Hose, 1 ½ inch, 100 ft. length	0967		30	Oil, Bar & Chain (gallon)	1880	
ITEM#	REQUESTED ITEM	NFES#	AMOUNT	ITEM#	REQUESTED ITEM	NFES#	AMOUNT
9	Increaser, ¾" to 1"	2235		31	Fusees (box)	0105	
10	Increaser, 1" to 1 ½"	0416		32	Torch, Drip Torch ea.	0241	
11	Nozzle, Garden ¾ inch	0136		33	Mix, Drip Torch 3-1, 5 gal.		
12	Nozzle, Forester, 1"	0024		34	Flagging, Ribbon, Color/Roll		
13	Nozzle, KK Type, 1"	1081		35	Washcloth, Waterless	0206	
14	Nozzle, KK Type, 1 ½"	1082		36	Water, Cubi, 5 gallon ea.	0048	
15	Reducer, 1" to ¾"	0733		37	Water, Bottled, (case)		
16	Reducer, 1 ½" to 1"	0010		38	Sports Drink, Gatorade (case)		
17	Tee, Hoseline, 1"x1"x ¾"	1809		39	Food, MRE's (12 per Box)	1842	
18	Tee, Hoseline, 1"x1"x 1"	2240		40	Pump Kit, High Pressure	0870	
19	Tee, Hoseline, 1 ½" x 1 ½" x 1"	0230		41	Pump, High Pressure	0148	
20	Wye, Gated, ¾" inch	0904		42	Pump Kit, Light Weight	0670	
21	Wye, Gated, 1"	0259		43	Sprinkler Kit	1048	
22	Wye, Gated, 1 ½"	0231		44	Pump Kit, Volume	6041	
23	Tank, Collapsible. Capacity Gallons?			45	Mop-Up Kit	0772	
24	Tank, Folding/Frame. Capacity ??			46	Fuel (gas / diesel / mix)		
25	Wrap, Structure (roll)	0881					

Date and Time Needed	Point of Contact at Delivery Location

OTHER / NOTES:

MEDICAL PLAN (ICS 206)

1. Incident Name: <p style="text-align: center;">BASIN INCIDENT</p>		2. Operational Period: Date From: 6/30/24 Date To: 7/1/24 Time From: 0700 Time To: 0700					
3. Medical Aid Stations:							
Name	Location	Contact Number/Freq	Paramedics				
Medical Unit	ICP		Yes				
4. Transportation (indicate air or ground):							
Ambulance Service	Location	Contact Number	Level of Service				
MA781 and MA782 (Ground)	Incident Ambulance	Order via COMMS	ALS				
CHP- Day hoist only	Fresno, CA	Order via COMMS	ALS				
Air Ambulance (Skylife)	Fresno, CA	Order via COMMS	ALS				
5. Hospitals:							
Hospital Name	Address,	Contact Number(s)/ Frequency	Travel Time		Trauma Center	Burn Center	Helipad
	Lat & Long Helipad		Air	Ground			
Clovis Community Medical Center	2755 Herndon Ave, Clovis, CA 93611, Lat/Long: 36.8390429, -119.660354	559 324-4000	00:12	01:30		<input type="checkbox"/>	<input checked="" type="checkbox"/>
Saint Agnes Medical Center	1303 E Herndon Ave, Fresno, CA 93710, Lat/Long: 36.8352022, -119.7655278	559 450-3000	00:15	01:30		<input type="checkbox"/>	<input checked="" type="checkbox"/>
Community Regional Medical Center	2823 Fresno St., Fresno, CA 93721, Lat/Long: 36.7428949, -119.7843968	559 459-6000	00:16	01:30	Level 1	<input checked="" type="checkbox"/>	<input checked="" type="checkbox"/>
						<input type="checkbox"/>	<input type="checkbox"/>
						<input type="checkbox"/>	<input type="checkbox"/>
6. Special Medical Emergency Procedures							
Line Emergency Crew Supervisor will contact Division Supervisor with patient complaint/condition and location. - Division Group Supervisor Contacts: 1. Closest EMS resource 2. Communications Unit - Communications Unit Contacts: 1. Ground or Air ambulance as requested. 2. Operations 3. Safety 4. Medical Unit - Division Supervisor or designee will serve as point of contact and run medical emergency on assigned channel. 1. A pre-assigned tactical frequency (i.e. CALCORD) should be used for IWI and only for duration of the emergency. - Communications Unit will clear the Command channel for emergency traffic as needed for duration of the need. Camp Emergency Contact Medical Unit with patient complaint/condition and location. Medical staff will respond to stabilize the patient. - Medical Unit contacts 1. Communications 2. Safety 3. Logistics 4. Operations 5. Crew Supervisor 6. Comp/Claims				Injury Reporting Procedures Nature of Injury: _____ Location of Patient: _____ Point of Contact: _____ Transportation Requested by: Air ___ Ground ___ Point of Pick-Up: _____ Lat: _____ Long: _____ Patient Unit ID: _____ Is an EMT with Patient: Yes ___ No ___ Age: _____ Sex: Male ___ Female ___ All Emergencies - Secure the area and identified witnesses for later investigation. Keep accurate log of events.			
<input type="checkbox"/> Check box if aviation assets are utilized for rescue. If assets are used, coordinate with Air Operations.							
7. Prepared by (Medical Unit Leader): <p style="text-align: center;">Erik Nelson</p>				Signature:			
8. Approved by (Safety Officer): <p style="text-align: center;">Tom Sherman, Nick Colonelli (t)</p>				Signature:			
ICS 206		Date/Time:		6/29/2024 1830			
<small>NIMS IAP</small>							

MEDICAL PLAN (ICS 206 WF)

Controlled Unclassified Information//Basic

Medical Incident Report

FOR A NON-EMERGENCY INCIDENT, WORK THROUGH CHAIN OF COMMAND TO REPORT AND TRANSPORT INJURED PERSONNEL AS NECESSARY.

FOR A MEDICAL EMERGENCY: IDENTIFY ON-SCENE INCIDENT COMMANDER BY NAME AND POSITION AND ANNOUNCE "MEDICAL EMERGENCY" TO INITIATE RESPONSE FROM IMT COMMUNICATIONS/DISPATCH.

Use the following items to communicate situation to communications/dispatch.

1. CONTACT COMMUNICATIONS / DISPATCH (Verify correct frequency prior to starting report)

Ex: "Communications, Div. Alpha. Stand-by for Emergency Traffic."

2. INCIDENT STATUS: Provide incident summary (including number of patients) and command structure.

Ex: "Communications, I have a Red priority patient, unconscious, struck by a falling tree. Requesting air ambulance to Forest Road 1 at (Lat./Long.) This will be the Trout Meadow Medical, POC is TFLD Jones. EMT Smith is providing medical care."

Severity of Emergency / Transport Priority	<input type="checkbox"/> RED / PRIORITY 1 Life or limb threatening injury or illness. Evacuation need is IMMEDIATE <i>Ex: Unconscious, difficulty breathing, bleeding severely, 2° – 3° burns more than 4 palm sizes, heat stroke, disoriented.</i> <input type="checkbox"/> YELLOW / PRIORITY 2 Serious Injury or illness. Evacuation may be DELAYED if necessary. <i>Ex: Significant trauma, unable to walk, 2° – 3° burns not more than 1-3 palm sizes.</i> <input type="checkbox"/> GREEN / PRIORITY 3 Minor Injury or illness. Non-Emergency transport <i>Ex: Sprains, strains, minor heat-related illness.</i>	
Nature of Injury or Illness & Mechanism of Injury	Click or tap here to enter text.	Brief Summary of Injury or Illness <i>(Ex: Unconscious, Struck by Falling Tree)</i>
Evacuation Request	Click or tap here to enter text.	Air Ambulance / Short Haul/Hoist Ground Ambulance / Other
Patient Location	Click or tap here to enter text.	Descriptive Location & Lat. / Long. (WGS84)
POC Name	Click or tap here to enter text.	Geographic Name + Medical <i>(Ex: Trout Meadow Medical)</i>
On-Scene POC		Name of on-scene POC of Incident within an Incident <i>(Ex: TFLD Jones)</i>
Patient Care		Name of Care Provider <i>(Ex: EMT Smith)</i>

3. INITIAL PATIENT ASSESSMENT: Complete this section for each patient as applicable (start with the most severe patient)

Patient Assessment: See IRPG PAGE 106 Click or tap here to enter text.

Treatment: Click or tap here to enter text.

4. EVACUATION PLAN:

Evacuation Location (if different): (Descriptive Location (drop point, intersection, etc.) or Lat. / Long.) Patient's ETA to Evacuation Location: Click or tap here to enter text.

Helispot / Extraction Site Size and Hazards: Click or tap here to enter text.

5. ADDITIONAL RESOURCES / EQUIPMENT NEEDS:

Example: Paramedic/EMT, crews, immobilization devices, AED, oxygen, trauma bag, IV/fluid(s), splints, rope rescue, wheeled litter, HAZMAT, extrication

Click or tap here to enter text.

6. COMMUNICATIONS: Identify State Air/Ground EMS Frequencies and Hospital Contacts as applicable

Function	Channel Name/Number	Receive (RX)	Tone/NAC *	Transmit (TX)	Tone/NAC *
COMMAND	Click or tap here to	Click or tap here to	Click or tap	Click or tap here to	Click or tap here to enter text.
AIR-TO-GRND	Click or tap here to	Click or tap here to	Click or tap	Click or tap here to	Click or tap here to enter text.
TACTICAL	Click or tap here to	Click or tap here to	Click or tap	Click or tap here to	Click or tap here to enter text.

7. CONTINGENCY: Considerations: If primary options fail, what actions can be implemented in conjunction with primary evacuation method? Be thinking ahead. Click or tap here to enter text..

8. ADDITIONAL INFORMATION: Updates/Changes, etc. Click or tap here to enter text.

REMEMBER: Confirm ETA's of resources ordered. Act according to your level of training. Be Alert. Keep Calm. Think Clearly. Act Decisively.

