

* CORRECTED *

INCIDENT ACTION PLAN BASIN INCIDENT

CA-SNF-000731

P5R1L7 (0515)

Monday



IAP
MAPS

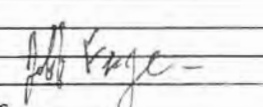
OPERATIONAL PERIOD

7/1/2024 0700

to

7/2/3024 0700

ORGANIZATION ASSIGNMENT LIST (ICS 203)

1. Incident Name: BASIN INCIDENT		2. Operational Period: Date From: 7/1/2024 Time From: 0700		Date To: 7/2/3024 Time To: 0700	
3. Incident Commander(s) and Command Staff:			7. Operation Section:		
IC/UC's	Chris Fogle, James Courtright(t)	Operations	Mark Lamont, Daniel Diaz, Sal Torres, Dan Munsey		
Deputy	Norm Walker	Deputy Operations	Bill Sandborg		
Safety Officer	Tom Sherman, Nick Colonelli(t)	Night Ops			
Information Officer	Amanda Munsey, Kate Kramer	Staging Area			
Liaison Officer	Kevin Klar	Branch			
4. Agency/Organization Representatives:		Division/Group	A	Steve Tracy, Durk Carlisle(t)	
Agency/Organization	Name	Division/Group	D	Avdul Pula, Jesus Gonzalez(t)	
AA	Dean Gould	Division/Group	M	Joseph Bunton	
AA Rep	Jon Regelbrugge	Division/Group	U	Joseph Bunton, Gabe Ford(t) H. BUSSEY (E)	
Fresno SO	Kathy Curtice	Division/Group	Z	Unstaffed	
OES Rep	Van Arroyo	Division/Group	BALCH STRUCTURE	Chad Flemming	
Cal Fire AA Rep	Will Goodman				
SNF Fire Rep	Jeff Crandel	Division/Group	Contingency	Bill Sandborg CHARLES DANIEL (E)	
USFS Tribal Liason	Dirk Charley	Division/Group	NIGHT	Garth Crow, Samuel Jerman(t)	
SCE Rep	Scott Brown	Division/Group			
PG&E Rep	Charlotte Jordan	Division/Group			
Public Works Sup	Russ Vanzant	Branch			
		Division/Group			
		Division/Group			
		Division/Group			
		Division/Group			
		Division/Group			
		Branch			
		Division/Group			
5. Planning Section:		Division/Group			
Chief	John Fisher	Division/Group			
Deputy	Jeff Ferguson(t), Mike Dunkel(t)	Division/Group			
Resource Unit	Kelly Smyth, Jon Regner(t), Lyle Pope(t), Brad Paige(t)	Division/Group			
Situation Unit	Greg Breyer, Jeff Chung	Branch			
Documentation Unit	Dan Turner(t)	Division/Group			
Demobilization Unit	Wendy Christopher	Division/Group			
GISS	Dustin Glasgow	Division/Group			
FBAN	Dan Felix, Bryan Gaines(t)	Division/Group			
IMET	Pete Curran	Division/Group			
Training Tech Spec	Manny Martinez(t)	Air Operations Branch		Director: Ted Visser	
READ	Kellen Takenaka	Air Support Group Supervisor		John Steddman	
Human Resources	Janine Summy	Air Tactical Group Supervisor		Brent Ohlweiler, John Steadman	
6. Logistics Section		Hellbase Manager		Derek Morton	
Chief	Russ Lajoie, Richard Sheets				
Supply Unit	Skip Ireland	8. Finance/Administration Section:			
Facilities Unit	Maria Torres	Chief	Debra York, Joan Disney		
Ground Support Unit	Christian Swiggum(t)	Time Unit			
Communications Unit	Eric Dunnick, Mike S'gro	Procurement Unit			
Medical Unit	Erk Nelson	Comp/Claims Unit			
		Cost Unit			
Prepared By: Name: Jeff Ferguson		Position/Title: PSCC(t)		Signature: 	
ICS 203		Date/Time: 6/30/2024 2300 hours		<small>NIMS IAP</small>	

FIRE WEATHER FORECAST

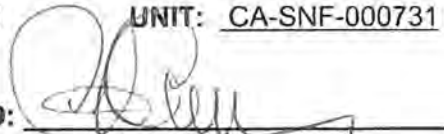
NAME: BASIN INCIDENT

FORECAST #3

UNIT: CA-SNF-000731

SHIFT: MONDAY JULY 1, 2024

SIGNED:



Pete Curran - IMET

TIME / DATE ISSUED: 1700hrs Sun 6/30/24

WEATHER DISCUSSION:

Building high pressure will bring warm and dry conditions over the fire again today with temperatures 5-7 degrees above average. A long duration heat wave will start on Tuesday and bring dangerous heat to the lower elevations of the fire and fire camp at least thru the July 4th holiday period. This combination of high heat and low daytime RH will lead to an extended period of critical fire weather for most of next week. An Excessive Heat Warning is in effect starting Tuesday (7/2) thru Friday (7/5) including the Basin Fire and fire camp.

MONDAY: Smokey under the inversion breaking mid-afternoon, then sunny, hot and dry.

MAXIMUM TEMPERATURE (deg F):

87-93 degrees

MINIMUM RELATIVE HUMIDITY:

15-22%

20 FOOT WINDS:

Terrain-driven slope winds 6-12mph early, then west 6-9mph with gusts to 13mph

Chance of Wetting Rain: 0

INVERSION: Strong thermal inversion trapping smoke & haze over the lower terrain until midafternoon.

MONDAY NIGHT: Warm overnight lows. Mostly clear with haze early, then smokey after 2am.

MINIMUM TEMPERATURE (deg F):

64-72 (upper/lower elevations)

MAXIMUM RELATIVE HUMIDITY:

42-48%

20 FOOT WINDS:

Terrain driven downslope winds 6-12mph. Ridgetops NE 6-12mph

Chance of Wetting Rain: 0

Moonlight Illumination: 31%

INVERSION: Thermal inversion developing late. Areas of smoke & haze in and over lower elevations.

TUESDAY OUTLOOK:

Strong heat wave Tuesday – Saturday. Triple digit temps Wens-Fri. Lower RH. Light winds.

Local Weather Observations near the fire: Email Weather Observations to: firewxobs@gmail.com



FIRE BEHAVIOR FORECAST

FORECAST NUMBER: 4	TYPE OF FIRE: Wildfire
FIRE NAME: Basin	OPERATIONAL PERIOD: July 01-02, 2024 Day & Night Shift
DATE ISSUED: June 30, 2024	TIME ISSUED: 2400
UNIT: CA-SNF- 000731	Prepared: Dan Felix, FBAN, Bryan Gaines (t) 8776-5

INPUTS

**** See Fire Weather Forecast for discussion and specific weather. ****

WEATHER SUMMARY:

Temp: Highs of 87-93 degrees.

RH: Minimum 15-22 percent.

Winds: Slope driven, 6-12mph early, then west 6-9mph gusts to 13mph.

Night: 64-72 degrees, RH 42-48%, down slope 6-12mph, Ridge NE 6-12mph

Moonlight Illumination: 31%

Inversion: Strong thermal inversion trapping smoke & haze over the lower terrain until mid afternoon.

GENERAL

A Fuels and Fire Behavior Advisory has been issued for California Grass and Herbaceous-Dominated Ecosystems for above average fuel loading. This has created a continuous fuel bed, allowing for rapid spread of fire.

Fuels in the current fire area are predominately Grass with mixed Oak and brush, which is what the fire has taken advantage of so far. Notably the grass crop is the result of two good winters and is matted, resulting in higher resistance to control because retardant and water cannot penetrate all the way to the ground. Be aware that the fire may be creeping through the matted grass even if it seems to be controlled by retardant. Surrounding areas transition into brush, and timber with large amounts of dead and down, especially to the north near Dinky Creek. As the fire impacts these live fuels they will not support the higher rates of spread we have seen so far, the indices in live fuel and the heavies are not as severe as the average for this year. Therefore, aspect and fuels are going to be your best indicator for the Rate of Spread (ROS) you will see.

Specific areas of concern:

DIV A, D and M - The primary concern for spread is in DIV A and D. The area west and north of Balch Camp and along Dinky Creek where the light flashy fuels begin to transition to heavier fuel loading. The drainage winds will aid in progressing the fire up canyon during the day. This will increase fire progression up drainage along Dinky Creek with opportunities for the fire to become established in dry stream beds with short runs leading up slope from Dinkey Creek. The west flank in this area will back against the wind to the west during the day with short up slope runs when slope, winds and fuels come into alignment, especially in lighter fuels. This activity could cause impacts to DIV U.

DIV U - Expect continued flanking and backing to the Kings River in the western and eastern portions of each of these divisions. This will increase the possibility of spotting from roll out and from swirling winds, especially in the areas where the river bends. Continue to be aware of the matted grass holding heat and continuing to move at the surface.

Night: Keep your situational awareness up with the winds in your area while paying attention to the wind shifting from up slope to down slope. Expect downhill/down canyon spread after the wind shifts during the night, and expect the fire to remain active well into early morning.

Air Operations: Smoke will adversely affect operations early in the day.

SAFETY

Test your fire behavior skills, anticipate what could happen, be prepared and plan accordingly.

Lookouts Communications Escape Routes Safety Zones	Basin Incident 07/01/2024 - 07/02/2024
	SAFETY MESSAGE

SAFE DRIVING

- Everyone wears a seatbelt.
- Drivers remain focused on the road and traffic conditions.
- Use headlights and warning lights when in poor visibility conditions.
- Watch for washed out roads, blind corners and other hazards.

LEADER'S INTENT

- Task – What are we doing?
 - Purpose – Why are we doing it?
 - End State – How should it look when we're done?

CIIMT 11 Safety Officers Tom Sherman-SOF2, Nick Colonelli-SOF2(t)

ASSIGNMENT LIST (ICS 204 WF)

CONTROLLED UNCLASSIFIED
INFORMATION//BASIC

1. Incident Name: BASIN INCIDENT	2. Operational Period: Date From: 07/01/24 Date To: 07/02/24 Time From: 0700 Time To: 0700	3. Branch Division A Page 1 of 2 Alpha
---	---	--

4. Operations Personnel: Operations Section Chief: Mark Lamont, Daniel Diaz, Sal Torres, Dan Munsey Branch Director: Division/Group Supervisor: Steve Tracy, Durk Carlisle(t)	Night Ops: Branch Safety: Al Goughnour Air Attack: Pat Bosh, Brad Sellers
---	---

5. Resources Assigned: ** Resources Below in Bold are 12 Hour **							
Resource Identifier	ALS	LWD	Leader	Personnel	Request #	Hours	Reporting Location
HC1 EL CARISO IHC		7/12	JOSHUA ACEVEDO	22	C-8	0700-1900	BEAR CREEK SPIKE
HC1 STANISLAUS IHC		7/8	BRANDON HULL	22	C-12	0700-1900	BEAR CREEK SPIKE
HC1 MENDOCINO IHC		7/12	ERNIE CECCON	20	C-13	0700-1900	SIERRA HS ICP
HC2 BLACK EAGLES 3		7/12	DAVID SCOTT	22	C-16	0700-1900	SIERRA HS ICP
HC2 SUNDOWNERS		7/8	JOHN MCGRAW	20	C-26	0700-1900	SIERRA HS ICP
ENG6 S/T XKI 5051F		7/13	MANUEL DAFONTE	16	E-70	0700-1900	SIERRA HS ICP
ENG3 CNF 332		7/14	JAMES STEADMAN	5	E-94	0700-1900	SIERRA HS ICP
ENG3 RSF ROGUE E-311		7/1	LLYOD CRUISE	5	E-8	0700-1900	SIERRA HS ICP
ENG3 STF E-342		7/10	TIMMOTHY KIRKWOOD	5	E-1	0700-1900	SIERRA HS ICP
ENG3 LPF 352			DAVID CHAVEZ	5	E-7	0700-1900	SIERRA HS ICP
SNF PT-42		7/10				0700-1900	SIERRA HS ICP
WTT2 MAM 3382		7/13	BRYCE FREEMAN	2	E-72	0700-1900	SIERRA HS ICP
WTT2 ANT 3788		7/13	RICK FORD	2	E-71	0700-1900	SIERRA HS ICP
WTS2 PVT PRECISION 82		7/13	DANNY GRAY	1	E-82	0700-1900	SIERRA HS ICP
DOZ3 PVT CENTRAL SIERRA		7/12	GAB SANCHEZ	4	E-61	0700-1900	SIERRA HS ICP
DOZ2 SNF 2			JOSH PERKINS	3	E-13	0700-1900	SIERRA HS ICP
DOZ2 PVT SUMMITLAND 58		7/12	MARK CAMPBELL	2	E-58	0700-1900	SIERRA HS ICP
DOZ2 ANF 10		7/10	GILBERT ROSALES	2	E-53	0700-1900	SIERRA HS ICP

- 6. Work Assignments:**
- Improve contingency line on Secate Ridge
 - improve road and trail access to firelines
 - Look for opportunities to improve existing containment lines.
 - Scout for opportunities to install new containment lines.

- 7. Special Instructions:**
- Identify drop point locations.
 - Scout and identify road hazards and need for roadway repairs.
 - Identify potential staging and parking areas.
 - Identify draft site locations.
 - Backhaul all trash and excess equipment.

8. Communications

Name	Ch	Function	Rx Freq	Rx Tone	Tx Freq	Tx Tone	Mode	Notes
NIFC C2	1	COMMAND	170.4500	0.0	168.1000	(T2) 123.0	A	FENCE MEADOW LOOKOUT
NIFC T3	3	TACTICAL	168.6000	0.0	168.6000	(T2) 123.0	A	
A/G CMD	14	A/G CMD	170.0750	0.0	170.0750	0.0	A	
CALCORD	15	TACTICAL	156.0750	(T6) 156.7	156.0750	(T6) 156.7	A	
AIRGUARD	16	EMERGENCY	168.6250	0.0	168.6250	(T1) 110.9	A	EMERGENCY

9. Prepared by: Name: Brad Paige RESL(t)
Signature:

ICS 204 Date/Time: 6/30/2024 2200 Personnel Count 158

ASSIGNMENT LIST (ICS 204 WF)

CONTROLLED UNCLASSIFIED
INFORMATION/BASIC

1. Incident Name: BASIN INCIDENT	2. Operational Period: Date From: 07/01/24 Date To: 07/02/24 Time From: 0700 Time To: 0700	3. Branch Division A Page 2 of 2 Alpha
---	---	--

4. Operations Personnel: Operations Section Chief: Mark Lamont, Daniel Diaz, Sal Torres, Dan Munsey Branch Director: Division/Group Supervisor: Steve Tracy, Durk Carlisle(t)	Night Ops: Branch Safety: Al Goughnour Air Attack: Brent Ohlwiler, John Steadman
---	--

5. Resources Assigned:		** Resources Below in Bold are 12 Hour **					
Resource Identifier	ALS	LWD	Leader	Personnel	Request #	Hours	Reporting Location
DOZ2 STF 52		7/9	LEE BLISS	2	E-52	0700-1900	SIERRA HS ICP
DOZ2 PVT TRESSLERS 56		7/12	MORGAN SIMMONS	2	E-56	0700-1900	SIERRA HS ICP
DOZ2 EVANS BROTHERS 59		7/12	DAN EVANS	2	E-59	0700-1900	SIERRA HS ICP
EXCA2 PVT STRICKLAND 66		7/12	JASON STRICKLAND	2	E-66	0700-1900	SIERRA HS ICP
GRD1 CUTTING EDGE		7/12	ZACH MAY	2	E-79	0700-1900	SIERRA HS ICP
GRD1 ASHBROOK		7/12	JUSTIN CROSS	2	E-80	0700-1900	SIERRA HS ICP
SOFR HARKER		7/13	DANIEL HARKER	1	O-127	0700-1900	SIERRA HS ICP
TFLD STEPHENS		7/13	BOBBY STEPHENS	1	O-106	0700-1900	SIERRA HS ICP
HEQB VERA		7/10	NOE VERA	1	O-90	0700-1900	SIERRA HS ICP
REMS LA VERNE		7/12	COREY THOMPSON	4	O-4	0700-1900	SIERRA HS ICP
AMBU MA782 (ALS)	X		CHAD ADKINS	2	E-14	0700-1900	SIERRA HS ICP
ENG3 SIT DES 189DC		7/14	CHRIS COATES	21	E-64		
ENG6 S/T DES 6846F		7/14	JESS SPECHT	19	E-69		
TFLD MANAGO		7/14	MATTHEW MANAGO	1	O-105		
TFLD(4) COLLINS		7/14	KEVIN COLLINS	1	O-137		
WTS2 BRAUN		7/14	MARTIN BRAUN	1	E-84		
EXCA2 LONESTAR 67		7/12	DAN RAMOS	2	E-67		
HC2 104LLWILD 621		7/14	CHAD HANOUSEK	19	C-19		

- 6. Work Assignments:**
- Improve contingency line on Secate Ridge
 - improve road and trail access to firelines
 - Look for opportunities to improve existing containment lines.
 - Scout for opportunities to install new containment lines.

- 7. Special Instructions:**
- Identify drop point locations.
 - Scout and identify road hazards and need for roadway repairs.
 - Identify potential staging and parking areas.
 - Identify draft site locations.
 - Backhaul all trash and excess equipment.

8. Communications

Name	Ch	Function	Rx Freq	Rx Tone	Tx Freq	Tx Tone	Mode	Notes
NIFC C2	1	COMMAND	170.4500	0.0	168.1000	(T2) 123.0	A	FENCE MEADOW LOOKOUT
NIFC T3	3	TACTICAL	168.6000	0.0	168.6000	(T2) 123.0	A	
A/G CMD	14	A/G CMD	170.0750	0.0	170.0750	0.0	A	
CALCORD	15	TACTICAL	156.0750	(T6) 156.7	156.0750	(T6) 156.7	A	
AIRGUARD	16	EMERGENCY	168.6250	0.0	168.6250	(T1) 110.9	A	EMERGENCY

9. Prepared by: Name: Brad Paige	RESL(t)	Signature:
ICS 204	Date/Time: 6/30/2024 2200	Personnel Count: 21

ASSIGNMENT LIST (ICS 204 WF)

CONTROLLED UNCLASSIFIED
INFORMATION/BASIC

1. Incident Name: BASIN INCIDENT	2. Operational Period: Date From: 07/01/24 Date To: 07/02/24 Time From: 0700 Time To: 0700	3. Branch Division D Delta
---	---	--

4. Operations Personnel:		Page 1 of 2
Operations Section Chief: Mark Lamont, Daniel Diaz, Sal Torres, Dan Munsey	Night Ops:	
Branch Director:	Branch Safety: Al Goughnour	
Division/Group Supervisor: Bill Sandborg <i>AVDUL PULA, JESVS GONZALEZ</i>	Air Attack: Pat Bosh, Brad Sellers	

5. Resources Assigned:		** Resources Below in Bold are 12 Hour **					
Resource Identifier	ALS	LWD	Leader	Personnel	Request #	Hours	Reporting Location
HC1 TRUCKEE IHC		7/13	BRIAN PIMENTEL	24	C-17	0700-1900	SIERRA HS ICP
HC2IA SQF C10 → U		7/9	VICTOR HERNANDEZ	18	C-9	0700-1900	SIERRA HS ICP
HC2IA SCORPIONS 2		7/3	SEE RESOURCES	20	***	0700-1900	SIERRA HS ICP
HC2IA COBRA 4		7/10	SEE RESOURCES	20	***	0700-1900	SIERRA HS ICP
T/F SNF 48		7/8	ALEXIS CASTRO	23	E-43	0700-1900	SIERRA HS ICP
ENG3 STF 312		7/9	HEATHER WOODMAN	5	E-51	0700-1900	SIERRA HS ICP
ENG3 STF E-322		7/10	DAVID MCCREA	6	E-2	0700-1900	SIERRA HS ICP
ENG3 ANF 334			HECKTOR SANCHEZ	5	E-3	0700-1900	SIERRA HS ICP
ENG3 SHF 363		7/11	KEITH SMYTH	5	E-9	0700-1900	SIERRA HS ICP
ENG3 SHF 372		7/11	KEVIN MOGUA	5	E-4	0700-1900	SIERRA HS ICP
ENG3 MISSOULA E363 → U		7/1	PHIL RICHARDS	5	E-5	0700-1900	SIERRA HS ICP
ENG3 CEDAR MTN FD E75 → U		7/2	DAVID MCCREA	5	E-6	0700-1900	SIERRA HS ICP
WTT2 SNF 21 → A			MANNY RIVERA	2	E-41	0700-1900	SIERRA HS ICP
WTT2 TNF 234 → A		7/5	AUSTIN MISNER	2		0700-1900	SIERRA HS ICP
WTT2 ENF 221		7/10	TRENTON HUMPHREYS	2		0700-1900	SIERRA HS ICP
WTT2 CHUMASH 284		7/2	LOREN MCDARMENT	2	E-37	0700-1900	SIERRA HS ICP
DO22 PVT NORTHSTATE 60		7/12	TURK MUNK	2	E-60	0700-1900	SIERRA HS ICP
DO22 PVT NORTHSTATE 57		7/12	KYLE JOHNSON	2	E-57	0700-1900	SIERRA HS ICP
DO23 PVT CHRISTIAN 62		7/12	BRAD CHRISTIAN	4	E-62	0700-1900	SIERRA HS ICP

6. Work Assignments:

- Continue to construct and improve containment lines from Gulch Camp along Sycamore Springs
- Monitor, patrol and mop up as necessary.

7. Special Instructions:

- Identify drop point locations.
- Scout and identify road hazards and need for roadway repairs.
- Identify potential staging and parking areas.
- Identify draft site locations.
- Backhaul all trash and excess equipment.

8. Communications

Name	Ch	Function	Rx Freq	Rx Tone	Tx Freq	Tx Tone	Mode	Notes
NIFC C2	1	COMMAND	170.4500	0.0	168.1000	(T2) 123.0	A	FENCE MEADOW LOOKOUT
R5 T5	7	TACTICAL	167.1125	0.0	167.1125	(T2) 123.0	A	
A/G CMD	14	A/G CMD	170.0750	0.0	170.0750	0.0	A	
CALCORD	15	TACTICAL	156.0750	(T6) 156.7	156.0750	(T6) 156.7	A	
AIRGUARD	16	EMERGENCY	168.6250	0.0	168.6250	(T1) 110.9	A	EMERGENCY

9. Prepared by: Name: Brad Paige RESL(t) Signature:

ICS 204 Date/Time: 6/30/2024 2200 Personnel Count: 153

ASSIGNMENT LIST (ICS 204 WF)

CONTROLLED UNCLASSIFIED
INFORMATION/BASIC

1. Incident Name: BASIN INCIDENT	2. Operational Period: Date From: 07/01/24 Date To: 07/02/24 Time From: 0700 Time To: 0700	3. Branch Division U
4. Operations Personnel:		Page 1 of 1 Uniform

Operations Section Chief: Mark Lamont, Daniel Diaz, Sal Torres, Dan Munsey Branch Director: Division/Group Supervisor: Joseph Bunton, Gabe Ford(t), <i>NOLAN BUSSEY (E)</i>	Night Ops: Branch Safety: Al Goughnour Air Attack: Brent Ohlwiler, John Steadman
---	--

5. Resources Assigned: ** Resources Below in Bold are 12 Hour **							
Resource Identifier	ALS	LWD	Leader	Personnel	Request #	Hours	Reporting Location
HC1 BEAR DIVIDE IHC → m		7/10		21	***	0700-1900	KIRCH FLAT SPIKE
HC1 BRECKENRIDGE IHC		7/10	COREY CORREA	15	***	0700-1900	SIERRA HS ICP
HC1 LITTLE T IHC → m		7/10		24	***	0700-1900	KIRCH FLAT SPIKE
HC2IA HORSESHOE MEADOW		7/9	BROCK MOREHEAD	21	C-10	0700-1900	KIRCH FLAT SPIKE
HC2 COBRAS 5		7/13	TY JACKSON	22	C-15	0700-1900	SIERRA HS ICP
ENG3 SQF 347		7/8	BRENTEN STARLING	5	E-50	0700-1900	SIERRA HS ICP
EXCA2 LONESTAR 67 → A		7/12	DAN RAMOS	2	E-67	0700-1900	KIRCH FLAT SPIKE
SOFR HUBBY		7/13	BOBBY HUBBY	1	O-128	0700-1900	SIERRA HS ICP
SOFR SANDOVAL		7/11	RICHARD SANDOVAL	1	O-16	0700-1900	SIERRA HS ICP
EMPF(t) COLPITTS	X	7/11	NATHANIEL COLPITTS	1	O-15	0700-1900	SIERRA HS ICP
EMTF HAMER		7/11	BRYAN HAMER	1	O-12	0700-1900	SIERRA HS ICP
AMB2 MA781 (ALS)	X	7/14		2		0700-1900	SIERRA HS ICP
<i>ARCK DUNN</i>		<i>7/14</i>	<i>MORGAN DUNN</i>	<i>1</i>	<i>O-159</i>		

6. Work Assignments:

- Improve containment lines along Trimmer Springs Road.
- Monitor, patrol and mop up as necessary.
- Continue to build containment lines along the eastern flank from Trimmer Springs Road north to Rodgers Ridge.

7. Special Instructions:

- Identify drop point locations.
- Scout and identify road hazards and need for roadway repairs.
- Identify potential staging and parking areas.
- Identify draft site locations.
- Backhaul all trash and excess equipment.

8. Communications								
Name	Ch	Function	Rx Freq	Rx Tone	Tx Freq	Tx Tone	Mode	Notes
NIFC C2	1	COMMAND	170.4500	0.0	168.1000	(T2) 123.0	A	FENCE MEADOW LOOKOUT
NIFC T6	6	TACTICAL	168.2500	0.0	168.2500	(T2) 123.0	A	
A/G CMD	14	A/G CMD	170.0750	0.0	170.0750	0.0	A	
CALCORD	15	TACTICAL	156.0750	(T6) 156.7	156.0750	(T6) 156.7	A	
AIRGUARD	16	EMERGENCY	168.6250	0.0	168.6250	(T1) 110.9	A	EMERGENCY

9. Prepared by: Name: Brad Paige	RESL(t)	Signature:
ICS 204	Date/Time: 6/30/2024 2200	Personnel Count: 116

Air Operations Summary (ICS 220)

1. Incident Name: <div style="text-align: center;">BASIN INCIDENT</div>		2. Operational Period: Date: 07/01/24 Date To: 07/02/24 From: 0700 Time To: 0700 Time: 0700		3. Sunrise: 0539 Sunset: 2021		
4. Remarks (safety notes, hazards, air operations special equipment, etc.): Multiple wires and transmission lines. Auberry Helibase 32180 Auberry Road Prather, CA, 93651 37°0 03.95 119°0 29.30		5. Ready Alert Aircraft: Medicac: G821, CHP H-40, CHP 42 New Incident:				
7. Personnel:		6. Temporary Flight Restriction Number:				
Air Operations Branch Director	Name: Ted Visser	Phone Number: 619-981-2409	AM	FM	Altitude: 11000 MSL	
Air Support Group Supervisor	Brent Ohlweiler John Steadman	949-633-1365 760-468-1974	124.225	169.15	Center Point: 4/5664	
Air Tactical Group Supervisor (AT15)	Mike Fralicks	559-760-8379	119.125		9. Fixed-Wing (category/kind/type, make/model, N#, base):	
Helicopter Coordinator	Kelly Harper	408-981-8811			Air Tactical Group Supervisor Aircraft:	
Helibase Manager	Derek Morton	951-203-8464			AT 15 AT 07	
10. Helicopters (use additional sheets as necessary):						
FAA N#	Category/Kind/Type	Make/Model	Base	Available	Start	Remarks
H522	TYPE 2	Bell A1++	Auberry	0830	0700	EU LongLine w/ Bucket
H534	TYPE 2	Bell A1++	Dinkey	0830	0700	EU Tank
H538	TYPE 2	Bell A1++	Auberry	0830	0700	EU Tank
962R	TYPE 1	S-64E	Auberry	830	700	
8CH	TYPE 1	CH-47 D	Auberry	0830	0700	CWN Tank
7RA	TYPE 1	CH-47 D	Auberry	0830	0700	EU Tank
0UH	TYPE 1	UH-60	Auberry	830	700	
0FS	TYPE 1	UH-60	Auberry	0830	0700	EU Tank
2BH	TYPE 1	UH-60	Auberry	830	0700	
H-502	TYPE 3	ASTAR B3	Auberry	830	0700	RECON
H-4TV	TYPE 3	Matt Lynd- HELCO ASTAR B2	Auberry	830	0700	HLCO
11. Prepared by: Name: Ted Visser		Position/Title: ACB/D		Signature:		
Date/Time:						

FINANCE MESSAGE

Finance Email: 2024.basin.finance@firenet.gov

CTR's, Shift Tickets and supporting documents may be mailed to the email address above. If you are unable to send documents electronically you can drop off paper copies to Finance. Please submit documents either electronic **OR** hard copy. Do not submit duplicates.

Approving Officials for CTRs & Shift Tickets please write legibly and print your name under your signature.

Contract equipment must note any down time in the remarks on the shift ticket and include your resource order at the top of the shift ticket.

All Local Government employees MUST have a MARS account to complete and submit their F-42's for reimbursement.

Authorization for Lodging ended 6/28. As of 6/29 full camp services were available and reimbursement for lodging expenses is not allowed.

Fire Replacement - For replacement of non-cache items the requesting resource will take a completed OF-213 and OF-289 to the Comp/Claims Unit Leader for review. Requests for replacement of government-issued non-standard items brought from the home unit must be accompanied by a copy of a signed JHA or RA (IIBMH Chapter 30 Page 30-5). Based on the documentation provided a determination for replacement will be made by the Finance Section Chief, IC, or INBA. Damaged items will be surrendered to the Supply Unit. Replacement for normal wear and tear is through home unit project funds. Please do not wait until demob to begin this process.

The following resources need to please check in with Finance:

REQUEST NUMBER	RESOURCE NAME	ISSUE or QUESTION
Missing	Cobra 4	Need Resource Order # on the Basin Fire
E-22	Diaz Pickup	Shift Ticket Correction
E-56	Tresslers Trucking	Shift Ticket Mileage

**Basin Incident
Human Resource Message
July 1, 2024**

What Makes Communication Difficult?

Words Mean Different Things to Different People

Look up 500 different words in a dictionary and you will find over 2,500 meanings and/or definitions for those same words. To communicate effectively, both the speaker and the listener must have a mutual understanding of the words they use.

The Presenting Problem May Not Be the Major Concern

People often are hesitant to talk about what is really bothering them. The "real issues" are what they tend to hide most carefully. Trying to solve minor problems while the real problems are not clearly understood does not work. Doing this is a major source of ineffectiveness.

Filters Distort What People Hear and Say and Emotions Are Blinding

Our own expectations, experiences, values, biases, self-images, beliefs, ideas, worldview, etc. create a "zone of distortion", the filter that distorts our interpretation of another person's message. People are often unaware of how their emotions affect communications with others and emotions can literally put some people out of control and prevent them from communicating effectively.

Here's what to do to improve communication:

Stand in the other person's shoes. You have stood in the other person's shoes when you repeat their point of view back to their satisfaction.

Drop your point of view long enough to take another way of seeing things.

Remember the point of communication is not to win or be right, but to either bring people together or clarify their differences.

"Many leaders don't listen, and it is one of the greatest methods we have of learning. You need to listen to those under your supervision and to those who are above you."

- John Wooden -

Janine Summy, Human Resource Specialist, 509-429-1206

*NFFE Union Steward for the USFS is Randy Meyer, 530-503-5964
Randy.meyer@usda.gov. Available 24 hours daily*

PUBLIC INFORMATION

Please share photos and video from the Basin Fire to be used on the Sierra National Forest's Facebook page, Inciweb & potentially the media. Photos can be airdropped or texted to PIOs after briefing, at the PIO trailer or emailed to: 2024.basin@firenet.gov

If the public or media approaches you with questions, please refer to them to our incident information phone: (559) 468-6809

Incoming mail/packages:

Recipient Name and Unit Designation
c/o Basin Fire Camp PIO Trailer
33326 Lodge Road
Tollhouse, CA 93667

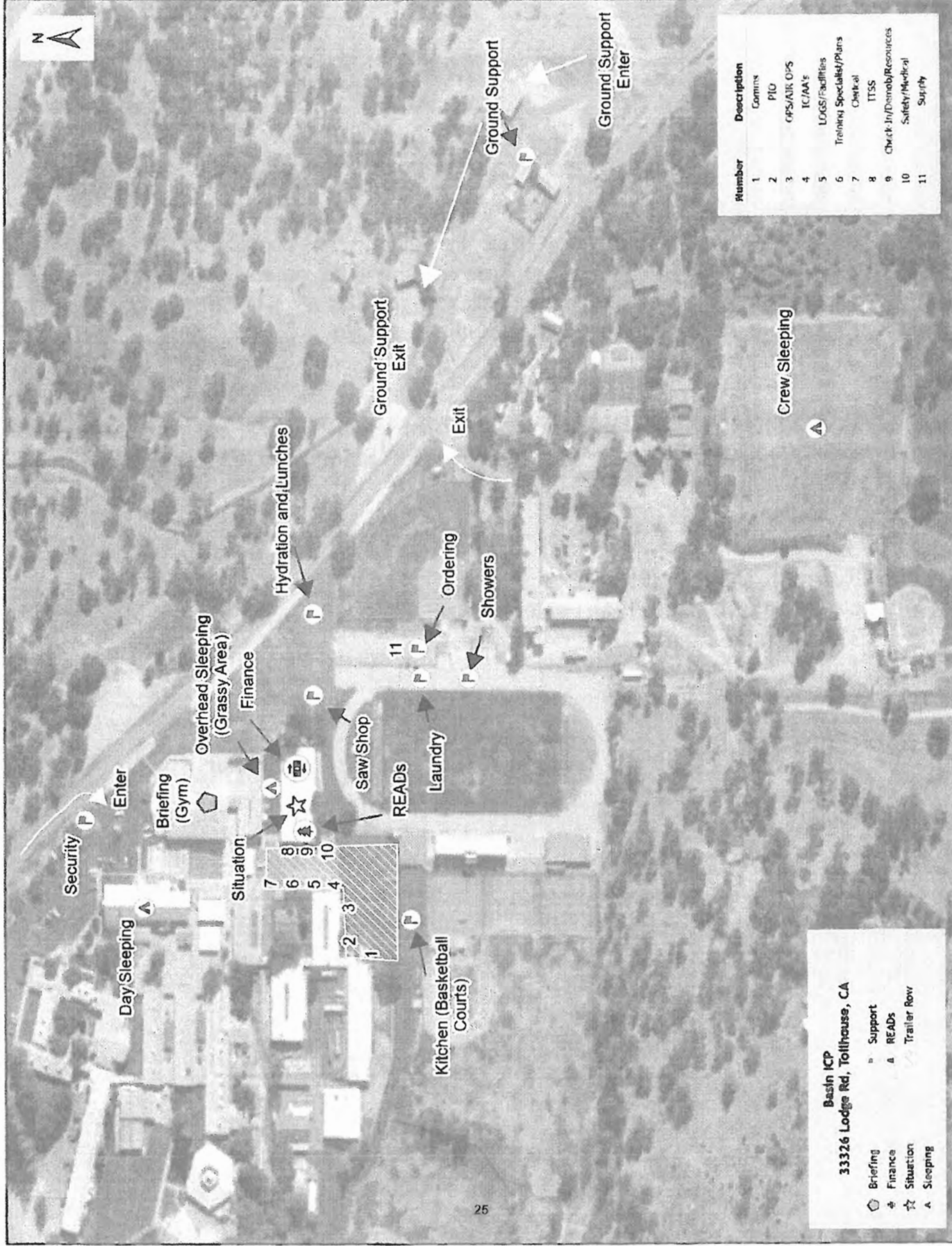
LOST AND FOUND – Located at the Information Trailer

Facebook



Inciweb





Number	Description
1	Comms
2	PIO
3	OPS/AIR OPS
4	IC/AA's
5	LOGS/Facilities
6	Training Specialists/Plans
7	Check-out
8	ITSS
9	Check-In/Demob/Resources
10	Safety/Medical
11	Supply

Basin ICP
33326 Lodge Rd, Tollhouse, CA

- Briefing
- Finance
- Situation
- Sleeping
- Support
- READS
- Trailer Row

Training Message *Basin Fire*

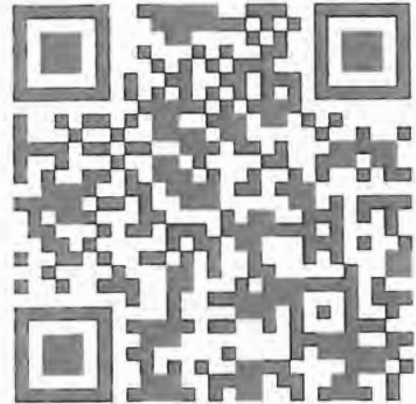
Training Specialist contact information:

- Manuel Martinez
- (818)742-8439
- Email: manuel.martinez@fire.lacounty.gov

If any Trainee or Trainer has any questions or concerns, stop by the TNSP trailer or call/text me at ANYTIME.

How to register as a Trainee:

1. Use the QR code below to register. If you are unable to register using the QR code, please call/text: 818-742-8439.
2. Once registered, you will receive text and email updates.
3. Please text or email me a picture of your task book cover page and your Qualification/Red Card.



Trainee Registration Form

Basin Incident DEMOB Procedures



In person check-out is being utilized on this incident. Monitor the IAP for the tentative DEMOB list. If there is an error on the dates, please communicate through your division or section to the check-in desk. They can then get the information verified and if needed, corrected.

Check out sheets will be available late afternoon on your last work day. Stop in at the DEMOB trailer to pick up your copy. Only get signatures from those sections that are highlighted.

1. All non-local resources will have at least 8 hours of rest prior to being released from the incident.
2. All resources will meet any agency-specific requirements on hours of travel per day or other travel restrictions.
3. Any heavy equipment operators or owners must have appropriate permits and follow any limitation on the movement of their equipment on public highways.
4. For an early release from the incident, prior to your last work day, an ICS 213 for the section must be submitted to DEMOB documenting an early release.
5. Emergency demobilization will be processed as quickly as possible. Individuals will be required to go through demobilization and checkout procedures. Demobilization and Resources Units will assure that manifests are changed as needed.
6. All resources needing airfare arranged will need to notify DEMOB 72 hours prior to the travel day.

Contact information

Phone: (925) 542-9173

Email: 2024.basin.demob@firenet.gov

**TENTATIVE RELEASE
 BASIN CA-SNF-000731
 7-1-2024 TO 7-3-2024**

Request #	Time	Resource Name	Item Code
7/1/2024			
C-4	0700	SIERRA IHC	CRW1
C-6	0700	TRINITY	CRWQ
E-11	0700	3645C	EST3
7/2/2024			
E-5	0700	E363	ENG3
E-8	0700	E311	ENG3
7/3/2024			
E-6	0700	E75	ENG3
E-37	0700	284	WTT2

MEDICAL PLAN (ICS 206)

1. Incident Name: <p style="text-align: center;">BASIN INCIDENT</p>		2. Operational Period: Date From: 7/1/24 Date To: 7/2/24 Time From: 0700 Time To: 0700					
3. Medical Aid Stations:							
Name	Location	Contact Number/Freq	Paramedics				
Frontline Medical	ICP	Order via COMMS	Yes				
4. Transportation (indicate air or ground):							
Ambulance Service	Location	Contact Number	Level of Service				
Incident Ambulances (Ground)	Various Divisions	Order via COMMS	ALS				
CHP- Day hoist only	Fresno, CA	Order via COMMS	ALS				
Air Ambulance (Skylife)	Fresno, CA	Order via COMMS	ALS				
5. Hospitals:							
Hospital Name	Address,	Contact Number(s)/ Frequency	Travel Time		Trauma Center	Burn Center	Helipad
	Lat & Long		Air	Ground			
Clovis Community Medical Center	2755 Herndon Ave, Clovis, CA 93611, Lat/Long: 36.8390429, -119.660354	559 324-4000	00:12	01:30		<input type="checkbox"/>	<input checked="" type="checkbox"/>
Saint Agnes Medical Center	1303 E Herndon Ave, Fresno, CA 93710, Lat/Long: 36.8352022, -119.7655278	559 450-3000	00:15	01:30		<input type="checkbox"/>	<input checked="" type="checkbox"/>
Community Regional Medical Center	2823 Fresno St., Fresno, CA 93721, Lat/Long: 36.7428949, -119.7843968	559 459-6000	00:16	01:30	Level 1	<input checked="" type="checkbox"/>	<input checked="" type="checkbox"/>
						<input type="checkbox"/>	<input type="checkbox"/>
						<input type="checkbox"/>	<input type="checkbox"/>
6. Special Medical Emergency Procedures							
Line Emergency Crew Supervisor will contact Division Supervisor with patient complaint/condition and location. - Division Group Supervisor Contacts: 1. Closest EMS resource 2. Communications Unit - Communications Unit Contacts: 1. Ground or Air ambulance as requested. 2. Operations 3. Safety 4. Medical Unit - Division Supervisor or designee will serve as point of contact and run medical emergency on assigned channel. 1. A pre-assigned tactical frequency (i.e. CALCORD) should be used for IWI and only for duration of the emergency - Communications Unit will clear the Command channel for emergency traffic as needed for duration of the need.				Injury Reporting Procedures Nature of Injury: _____ Location of Patient: _____ Point of Contact: _____ Transportation Requested by: Air _____ Ground _____ Point of Pick-Up: _____ Lat: _____ Long: _____ Patient Unit ID: _____ Is an EMT with Patient: Yes _____ No _____ Age: _____ Sex: Male _____ Female _____			
Camp Emergency Contact Medical Unit with patient complaint/condition and location. Medical staff will respond to stabilize the patient - Medical Unit contacts 1. Communications 2. Safety 3. Logistics 4. Operations 5. Crew Supervisor 6. Comp/Claims				All Emergencies - Secure the area and identified witnesses for later investigation. Keep accurate log of events.			
<input type="checkbox"/> Check box if aviation assets are utilized for rescue. If assets are used, coordinate with Air Operations.							
7. Prepared by (Medical Unit Leader): Erik Nelson				Signature:			
8. Approved by (Safety Officer): Tom Sherman, Nick Colonelli(t)				Signature: _____			
ICS 206		NIMS IAP		Date/Time:		6/30/2024 1630	

MEDICAL PLAN (ICS 206 WF)

Controlled Unclassified Information//Basic

Medical Incident Report																													
<p>FOR A NON-EMERGENCY INCIDENT, WORK THROUGH CHAIN OF COMMAND TO REPORT AND TRANSPORT INJURED PERSONNEL AS NECESSARY.</p> <p>FOR A MEDICAL EMERGENCY: IDENTIFY ON-SCENE INCIDENT COMMANDER BY NAME AND POSITION AND ANNOUNCE "MEDICAL EMERGENCY" TO INITIATE RESPONSE FROM IMT COMMUNICATIONS/DISPATCH.</p>																													
<p>Use the following items to communicate situation to communications/dispatch.</p>																													
<p>1. CONTACT COMMUNICATIONS / DISPATCH (Verify correct frequency prior to starting report) <i>Ex: "Communications, Div. Alpha Stand-by for Emergency Traffic."</i></p> <p>2. INCIDENT STATUS: Provide incident summary (including number of patients) and command structure. <i>Ex: "Communications, I have a Red priority patient, unconscious, struck by a falling tree. Requesting air ambulance to Forest Road 1 at (Lat./Long.) This will be the Trout Meadow Medical, POC is TFLD Jones. EMT Smith is providing medical care."</i></p>																													
Severity of Emergency / Transport Priority	<input type="checkbox"/> RED / PRIORITY 1 Life or limb threatening injury or illness. Evacuation need is IMMEDIATE <i>Ex: Unconscious, difficulty breathing, bleeding severely, 2^o - 3^o burns more than 4 palm sizes, heat stroke, disoriented.</i> <input type="checkbox"/> YELLOW / PRIORITY 2 Serious Injury or illness. Evacuation may be DELAYED if necessary. <i>Ex: Significant trauma, unable to walk, 2^o - 3^o burns not more than 1-3 palm sizes.</i> <input type="checkbox"/> GREEN / PRIORITY 3 Minor Injury or illness. Non-Emergency transport <i>Ex: Sprains, strains, minor heat-related illness.</i>																												
Nature of Injury or Illness & Mechanism of Injury		Brief Summary of Injury or Illness <i>(Ex: Unconscious, Struck by Falling Tree)</i>																											
Evacuation Request		Air Ambulance / Short Haul/Hoist Ground Ambulance / Other																											
Patient Location		Descriptive Location & Lat. / Long. (WGS84)																											
POC Name		Geographic Name + Medical <i>(Ex: Trout Meadow Medical)</i>																											
On-Scene POC		Name of on-scene POC of Incident within an Incident <i>(Ex: TFLD Jones)</i>																											
Patient Care		Name of Care Provider <i>(Ex. EMT Smith)</i>																											
<p>3. INITIAL PATIENT ASSESSMENT: Complete this section for each patient as applicable (start with the most severe patient)</p> <p>Patient Assessment: See IRPG PAGE 106</p> <p>Treatment:</p>																													
<p>4. EVACUATION PLAN:</p> <p>Evacuation Location (if different): (Descriptive Location (drop point, intersection, etc.) or Lat. / Long.) Patient's ETA to Evacuation Location:</p> <p>Helispot / Extraction Site Size and Hazards:</p>																													
<p>5. ADDITIONAL RESOURCES / EQUIPMENT NEEDS:</p> <p><i>Example: Paramedic/EMT, crews, immobilization devices, AED, oxygen, trauma bag, IV/fluid(s), splints, rope rescuc, wheeled litter, HAZMAT, extrication</i></p>																													
<p>6. COMMUNICATIONS: Identify State Air/Ground EMS Frequencies and Hospital Contacts as applicable</p> <table border="1" style="width: 100%; border-collapse: collapse;"> <thead> <tr> <th style="width: 15%;">Function</th> <th style="width: 20%;">Channel Name/Number</th> <th style="width: 15%;">Receive (RX)</th> <th style="width: 15%;">Tone/NAC *</th> <th style="width: 15%;">Transmit (TX)</th> <th style="width: 20%;">Tone/NAC *</th> </tr> </thead> <tbody> <tr> <td>COMMAND</td> <td></td> <td></td> <td></td> <td></td> <td></td> </tr> <tr> <td>AIR-TO-GRND</td> <td></td> <td></td> <td></td> <td></td> <td></td> </tr> <tr> <td>TACTICAL</td> <td></td> <td></td> <td></td> <td></td> <td></td> </tr> </tbody> </table>						Function	Channel Name/Number	Receive (RX)	Tone/NAC *	Transmit (TX)	Tone/NAC *	COMMAND						AIR-TO-GRND						TACTICAL					
Function	Channel Name/Number	Receive (RX)	Tone/NAC *	Transmit (TX)	Tone/NAC *																								
COMMAND																													
AIR-TO-GRND																													
TACTICAL																													
<p>7. CONTINGENCY: Considerations: If primary options fail, what actions can be implemented in conjunction with primary evacuation method? Be thinking ahead.</p>																													
<p>8. ADDITIONAL INFORMATION: Updates/Changes, etc.</p>																													
<p>REMEMBER: Confirm ETA's of resources ordered. Act according to your level of training. Be Alert. Keep Calm. Think Clearly. Act Decisively.</p>																													

