

INCIDENT ACTION PLAN

# BASIN INCIDENT

CA-SNF-000731

PR51L7 (0515)

TUESDAY



mike gutierrez

MAPS



IAP

OPERATIONAL PERIOD

7/9/2024 0700

to

7/10/2024 0700



# INCIDENT OBJECTIVES (ICS 202)

<b>1. Incident Name:</b> <p style="text-align: center;"><b>BASIN INCIDENT</b></p>	<b>2. Operational Period:</b>	Date From: 7/9/2024 Time From: 0700	Date To: 7/10/2024 Time To: 0700
--	-------------------------------	--	-------------------------------------

**3. Objective(s):**

**Management Objectives:**

- Provide for emergency personnel and public safety at all times.
- Protect property, improvements and infrastructure.
- Ensure coordinated, timely and accurate release of public information.
- Foster and maintain relationships with all cooperators and stakeholders.
- Protect economic, natural, cultural and heritage resources.

**Control Objectives:**

- Keep the fire North of the Kings River in order to keep the fire out of the Sequoia National Forest and related infrastructure.
- Keep the fire East of the Dinkey Trimmer Road to protect infrastructure in the Pine Flat Lake area.
- Keep the fire South of McKinley Grove Road to protect campgrounds and grazing allotments.
- Keep the fire West of Garlic Meadow Creek to prevent fire from entering Sequoia & Kings Canyon National Parks.

**General Situational Awareness:**

- Steep and rugged terrain, critically dry and receptive fuel beds, active area for fire history and drought stressed trees.
- Ensure medical plan is in place before beginning operations.
- Dangerously high maximum and minimum temperatures are expected.

**5. Site Safety Plan Required?**                      Yes  No

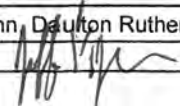
**Approved Site Safety Plan(s) Located at:**

**6. Incident Action Plan**

<input checked="" type="checkbox"/> ICS 203	<input checked="" type="checkbox"/> ICS 215A	<input checked="" type="checkbox"/> ICS 205 A	<input type="checkbox"/>
<input checked="" type="checkbox"/> ICS 204	<input checked="" type="checkbox"/> ICS 220	<input checked="" type="checkbox"/> Training Message	<input type="checkbox"/>
<input checked="" type="checkbox"/> ICS 205	<input checked="" type="checkbox"/> Facility Maps	<input checked="" type="checkbox"/> Camp Map	<input type="checkbox"/>
<input checked="" type="checkbox"/> ICS 206	<input checked="" type="checkbox"/> Weather Forecast	<input checked="" type="checkbox"/> Demob Plan	<input type="checkbox"/> County Health Message
<input checked="" type="checkbox"/> ICS 208	<input checked="" type="checkbox"/> Fire Behavior	<input checked="" type="checkbox"/> Finance Message	<input checked="" type="checkbox"/> ICS 214

<b>7. Prepared By:</b> Jeff Ferguson	<b>Position/Title:</b> PSCC(t)	<b>Signature:</b>	
<b>8. Approved by Incident Commander:</b>	Chris Fogle	<b>Signature:</b>	

## ORGANIZATION ASSIGNMENT LIST (ICS 203)

<b>1. Incident Name:</b> BASIN INCIDENT		<b>2. Operational Period: Date From:</b> 7/9/2024 Time From: 0700		<b>Date To:</b> 7/10/2024 <b>Time To:</b> 0700	
<b>3. Incident Commander(s) and Command Staff:</b>			<b>7. Operation Section:</b>		
IC/UC's	Chris Fogle, James Courtright(t)	Operations	Daniel Diaz, Sal Torres, Mark Lamont		
Deputy	Norm Walker	Deputy Operations			
Safety Officer	Tom Sherman, Nick Colonelli(t)	Night Ops			
Information Officer	Amanda Munsey, Kate Kramer	Staging Area			
Liaison Officer	Jeff Willis	<b>Branch</b>			
<b>4. Agency/Organization Representatives:</b>		Division/Group	A	Steve Tracy	
Agency/Organization	Name	Division/Group	D	Justin Grunewald, Jesus Gonzalez(t)	
AA	Dean Gould	Division/Group	M		
AA Rep	Kim Sorini-Wilson	Division/Group	U/Z	Chris Scott	
Fresno SO	Kathy Curtice				
OES Rep	Javier Lara	Division/Group	Suppression Repair	Clint Wade, Eric Daniel(t)	
Cal Fire AA Rep	Will Goodman				
SNF Fire Rep	Jeff Crandel	Division/Group	IA	Joseph Bunton	
USFS Tribal Liason	Dirk Charley	Division/Group	NIGHT	Garth Crow, Samuel Jerman(t)	
SCE Rep	Troy Whitman	Division/Group			
PG&E Rep	Charlotte Jordan, Mike Minton	Division/Group			
Public Works Sup	Russ Vanzant	<b>Branch</b>			
ARA	Mark Struthwolf	Division/Group			
CCC	Angel Parga	Division/Group			
		Division/Group			
		Division/Group			
		Division/Group			
<b>5. Planning Section:</b>		<b>Branch</b>			
Chief	John Fisher	Division/Group			
Deputy	Jeff Ferguson(t), Mike Dunkel(t)	Division/Group			
Resource Unit	Kelly Smyth, Jon Regner(t), Brad Paige(t)	Division/Group			
Situation Unit	Greg Breyer, Jeff Chung	Division/Group			
Documentation Unit	Dan Turner(t)	Division/Group			
Demobilization Unit	Wendy Christopher	<b>Branch</b>			
GISS	Dustin Glasgow, Matthew Bilby(t)	Division/Group			
FBAN	Dan Felix, Bryan Gaines(t)	Division/Group			
IMET	Pete Curran	Division/Group			
Training Tech Spec	Manny Martinez(t)	Division/Group			
Lead READ	Joshua Courter	Division/Group			
Human Resources	Janine Summy	<b>Air Operations Branch</b>		<b>Director: Ted Visser</b>	
<b>6. Logistics Section</b>		Air Support Group Supervisor		John Steadman, Galen Young	
Chief	Russ Lajoie, Richard Sheets	Air Tactical Group Supervisor		Pat Basch, Brad Sellers	
Supply Unit	Skip Ireland	Helibase Manager		Shane Hagen, Sarah Hudson	
Facilities Unit	Maria Torres	<b>8. Finance/Administration Section:</b>			
Ground Support Unit	Christian Swiggum(t)	Chief	Debra York		
Communications Unit	Eric Dunnick, Eric White	Time Unit	Diane Mendez		
Medical Unit	E. Nelson, S. Hamilton, Y. Kopelowitz(t)	Procurement Unit			
		Comp/Claims Unit	Russel Kraus		
		Cost Unit	Sam Rapphahn, Dalton Rutherford		
<b>Prepared By: Name:</b> Jeff Ferguson		<b>Position/Title:</b> PSCC(t)		<b>Signature:</b> 	
<b>ICS 203</b>		<b>Date/Time:</b> 7/8/2024 2300 hours			

# FIRE WEATHER FORECAST

NAME: BASIN INCIDENT

FORECAST #11

UNIT: CA-SNF-000731

SHIFT: TUESDAY, JULY 9, 2024

SIGNED: 

Pete Curran - IMET

TIME / DATE ISSUED: 1700hrs Mon 7/8/24

---

## WEATHER DISCUSSION

Slightly cooler today by a few degrees under strong high pressure as the record-setting heat wave rolls on thru Friday. Otherwise, little perceptible change with similar warm overnight lows and RH minimums. Generally light west winds will prevail over the fire with NE gravity winds after midnight. Expect uncomfortably warm overnight lows in the upper 70's and low 80's with poor RH recovery. Cumulative heat stress and elevated fire danger are ongoing hazards.

---

**\*\*EXCESSIVE HEAT WARNING THRU 7/13/24\*\***

**TUESDAY:** Sunny hot & dry with a few more degrees cooling. Heat wave continues.

**MAXIMUM TEMPERATURE (deg F):**

97 -108 degrees (upper/lower elevations)

**MINIMUM RELATIVE HUMIDITY:**

16-30% (lower/upper)

**20 FOOT WINDS:**

Morning: Terrain-driven slope winds NE 8-10mph G22 early, then west 6-9mph with gusts to 15mph in the afternoon/evening.

**Chance of Wetting Rain:** 0

**INVERSION:** Subsidence inversion

---

**TUESDAY NIGHT:** Warm overnight lows. Poor R/H recovery.

**MINIMUM TEMPERATURE (deg F):**

76-82 (upper/lower elevations)

**MAXIMUM RELATIVE HUMIDITY:**

28-44%

**20 FOOT WINDS:**

Terrain driven downslope winds 6-12mph. Ridgetops NE G21 mph

**Chance of Wetting Rain:** 0

**Moonlight Illumination:** 12% (waxing crescent)

**INVERSION:** Subsidence inversion

---

## **WEDNESDAY OUTLOOK:**

A few degrees cooling. T: 95-106 RH Min: 16-28% Wind: West 6-9 G14

Local Weather Observations near the fire: Email Weather Observations to: [firewxobs@gmail.com](mailto:firewxobs@gmail.com)



SCAN ME

# FIRE BEHAVIOR FORECAST

FORECAST NUMBER: 12	TYPE OF FIRE: Wildfire
FIRE NAME: Basin	OPERATIONAL PERIOD: July 9, 2024 Day & Night Shift
DATE ISSUED: July 8, 2024	TIME ISSUED: 2000
UNIT: CA-SNF- 000731	Prepared: Dan Felix, FBAN, Bryan Gaines (t) <i>B.M.G.</i>

## INPUTS

**\*\* See Fire Weather Forecast for discussion and specific weather. \*\***

### WEATHER SUMMARY:

**Temp:** Highs 97–108 degrees (upper/lower elevations)

**RH:** Minimum 16-30%.

**Winds:** Morning: Terrain-driven slope winds, NE 8-10mph gusts to 22mph early, then west 6-9mph with gust to 15mph in the afternoon/evening.

**Inversion:** Subsidence inversion.

**Night:** 76-82 degrees (upper/lower), 28-44%, Terrain driven downslope 6-12mph, Ridgetops NE G21mph.

**Moonlight Illumination:** 12% (waxing crescent)

### GENERAL

*A Fuels and Fire Behavior Advisory has been issued for California grass and herbaceous-dominated ecosystems due to above-average fuel loading.*

The fire area contains grass, mixed oak, and brush, with grass being the main contributor to the fire spread. The grass is especially dense due to two good winters, making it hard to control as retardant and water cannot penetrate to the ground. It's important to note that the fire may still spread through the dense grass even if it appears controlled. If the fire spots across Dinkey Creek and onto the west aspect within the grass component, it could rapidly spread and transition into areas with a large amount of heavy fuels.

### Specific areas of concern:

**Division A** - Div A has effectively contained the fire within established lines, but we need to remain vigilant for any unburned areas within these lines. As the surface and live fuels become increasingly susceptible to ignition, there is a potential threat of embers from unburned areas impacting the containment lines.

**Division D** - The fire has been effectively contained within established lines. However, we must remain vigilant as unburned fuels in the area are drying out and could lead to potential flare-ups. It's essential to consider the swirling winds around the creek bend, as they may transport smoke and embers to the high-risk area on the east side, where continuous grass fuel pose a significant threat.

**Division M** - Division M is currently in good shape. However, we need to remain vigilant regarding unburned fuels within the division. As fuel moisture continues to dry out, it becomes more receptive/reactive to any flare-ups that could potentially produce ember cast, causing spotting concerns if enough wind impacts these areas.

**Division U&Z** - The division has been in good shape for several days. Roll-out could still cause some issues on the east end but that threat is diminishing as the heavier fuels consume.

**Night** - Anticipate downslope, down-canyon winds overnight, with the main impact expected in Divisions A and D. However, spread is not expected outside containment lines. For further discussion, please refer to the daytime Div A & D above.

**Air Operations:** No anticipated limitations.

### SAFETY

"All of us know what right looks like and we know where the line is between safe and unsafe. We must hold ourselves accountable to the standards and accomplish our mission with safety constantly in mind." Lt. Gen Brad Heithold, Commander of Air Force Special Operations Command

Lookouts  
Communications  
Escape Routes  
Safety Zones

## Basin Incident

07/09/2024 - Day and Night Shift

### SAFETY MESSAGE



### SUPPRESSION REPAIR & MONITORING MODE

For the next several days heavy equipment and fire crews will continue working & patrolling all divisions of the Basin Fire. Personal and crew safety remain the most important issue on this incident. Minimal fire activity is expected to continue but could become active in some areas in response to changing weather conditions—beware of boredom and complacency. Clearly understand assignments and be accountable for meeting determined objectives. Don't let silly acts result in injuries or accidents. Stay alert. Take care of personal health conditions. Check with the Med Unit if needed.

### MAJOR HAZARDS AND RISKS

- |  |   |
|--|---|
| <ul style="list-style-type: none"><li>• Continued hot days and hot nights.</li><li>• Steep slopes, rolling material—watch footing</li><li>• Heavy equipment, falling timber &amp; snags</li><li>• CAMP CRUD wash hands often</li><li>• Driving—Go Slow, Lights, Seatbelts, Windshields</li></ul> | <ul style="list-style-type: none"><li>• Lots of moving heavy equipment</li><li>• Dehydration—drink lots of fluids</li><li>• Local Community—Watch speeds</li><li>• Traffic congestion at ICP—go slow/use spotters</li><li>• Crew fatigue—Rest often; assess condition</li><li>• ICP Safety—uneven footing/trips/falls/ darkness</li></ul> |
|--|---|

*CIIMT 11 Safety Officers Tom Sherman-SOF2, Nick Colonelli-SOF2(t)*





# ASSIGNMENT LIST (ICS 204 WF)

CONTROLLED UNCLASSIFIED  
INFORMATION/BASIC

<b>1. Incident Name:</b> <b>BASIN INCIDENT</b>	<b>2. Operational Period:</b> Date From: 07/09/24    Date To: 07/10/24 Time From: 0700    Time To: 0700	<b>3. Branch</b> <b>Division</b>  <b>A</b>
---	---	--

<b>4. Operations Personnel:</b>		Page 1 of 2    Alpha
Operations Section Chief: <b>Daniel Diaz, Sal Torres, Mark Lamont</b>	Night Ops:	
Branch Director:	Branch Safety: <b>Al Goughnour</b>	
Division/Group Supervisor: <b>Steve Tracy</b>	Air Attack: <b>Pat Basch, Brad Sellers</b>	

<b>5. Resources Assigned:</b>		** Resources Below in Bold are 12 Hour **					
Resource Identifier	ALS	LWD	Leader	Personnel	Request #	Hours	Reporting Location
HC2IA IDYLLWILD 621		7/14	<b>CHAD HANOUSEK</b>	19	<b>C-19</b>	0700-1900	SIERRA HS ICP
HC2 BLACK EAGLES 3		7/12	<b>DAVID SCOTT</b>	22	<b>C-16</b>	0700-1900	SIERRA HS ICP
ENG3 CNF 332		7/14	<b>JAMES STEADMAN</b>	5	<b>E-94</b>	0700-1900	SIERRA HS ICP
ENG3 LPF 352		7/10	<b>DAVID CHAVEZ</b>	5	<b>E-7</b>	0700-1900	SIERRA HS ICP
ENG3 STF 342		7/10	<b>MICHAEL SCHEU</b>	5	<b>E-1</b>	0700-1900	SIERRA HS ICP
WTT2 ANT 3788		7/13	<b>RICK FORD</b>	2	<b>E-71</b>	0700-1900	SIERRA HS ICP
WTT2 MAM 3382		7/13	<b>BRYCE FREEMAN</b>	2	<b>E-72</b>	0700-1900	SIERRA HS ICP
WTT2 TNF 231		7/15	<b>NATHANIEL VANORDER</b>	2	<b>E-174</b>	0700-1900	SIERRA HS ICP
WTT2 - MOAPA VALLEY 73		7/16	<b>KELCEY TRIGG</b>	2	<b>E-173</b>	0700-1900	SIERRA HS ICP
WTS2 PVT PRECISION 82		7/13	<b>DANNY GRAY</b>	1	<b>E-82</b>	0700-1900	SIERRA HS ICP
DOZ2 PVT TRESSLERS 56		7/12	<b>TYSON MORELAND</b>	2	<b>E-56</b>	0700-1900	SIERRA HS ICP
DOZ2 PVT LONESTAR 55		7/12	<b>ROBERT ASCHERIN</b>	2	<b>E-55</b>	0700-1900	SIERRA HS ICP
DOZ3 PVT CENTRAL SIERRA		7/12	<b>GAB SANCHEZ</b>	4	<b>E-61</b>	0700-1900	SIERRA HS ICP
TFLD MANAGO		7/14	<b>MATTHEW MANAGO</b>	1	<b>O-105</b>	0700-1900	SIERRA HS ICP
TFLD(t) COLLINS		7/14	<b>KEVIN COLLINS</b>	1	<b>O-137</b>	0700-1900	SIERRA HS ICP
HEQB OLVERA		7/10	<b>NOE OLVERA</b>	1	<b>O-90</b>	0700-1900	SIERRA HS ICP
HEQB ORTA		7/16	<b>JAMES ORTA</b>	1	<b>O-165</b>	0700-1900	SIERRA HS ICP
SOFR HARKER		7/13	<b>JAMES FARMER</b>	1	<b>O-129</b>	0700-1900	SIERRA HS ICP

**6. Work Assignments:**

- Patrol, monitor and mop up as necessary.
- Perform suppression repair to turn back standards.

**7. Special Instructions:**

- READs/REAFs/ARCHs/FOBs will check in and out with DIVS when entering/exiting the division.
- Ensure hydration and monitor fatigue through sufficient rest breaks to minimize heat-related injuries.
- Backhaul all trash and excess equipment.

<b>8. Communications</b>								
Name	Ch	Function	Rx Freq	Rx Tone	Tx Freq	Tx Tone	Mode	Notes
NIFC C2	1	COMMAND	170.4500	0.0	168.1000	(T2) 123.0	A	FENCE MEADOW LOOKOUT
NIFC T3	10	TACTICAL	168.6000	0.0	168.6000	(T2) 123.0	A	
A/G CMD	14	A/G CMD	170.0750	0.0	170.0750	0.0	A	
CALCORD	15	TACTICAL	156.0750	(T6) 156.7	156.0750	(T6) 156.7	A	
AIRGUARD	16	EMERGENCY	168.6250	0.0	168.6250	(T1) 110.9	A	EMERGENCY

<b>9. Prepared by: Name:</b> Brad Paige		RESL (t)	Signature:
ICS 204	Date/Time: 7/8/2024	2200	Personnel Count: 78

# ASSIGNMENT LIST (ICS 204 WF)

CONTROLLED UNCLASSIFIED  
INFORMATION//BASIC

<b>1. Incident Name:</b> <b>BASIN INCIDENT</b>	<b>2. Operational Period:</b> Date From: 07/09/24      Date To: 07/10/24 Time From: 0700              Time To: 0700	<b>3. Branch</b> <b>Division</b>  <b>A</b>
---	---	--

<b>4. Operations Personnel:</b>		<b>Page 2 of 2</b> <b>Alpha</b>
Operations Section Chief: <b>Daniel Diaz, Sal Torres, Mark Lamont</b>	Night Ops:	
Branch Director:	Branch Safety: <b>Al Goughnour</b>	
Division/Group Supervisor: <b>Steve Tracy</b>	Air Attack: <b>Pat Basch, Brad Sellers</b>	

<b>5. Resources Assigned:</b>		<b>** Resources Below in Bold are 12 Hour **</b>					
Resource Identifier	ALS	LWD	Leader	Personnel	Request #	Hours	Reporting Location
<b>SOFR FARMER</b>		<b>7/13</b>	<b>JAMES FARMER</b>	<b>1</b>	<b>O-129</b>	<b>0700-1900</b>	<b>SIERRA HS ICP</b>
<b>EMPF MCINNISH</b>	<b>X</b>	<b>7/15</b>	<b>BRYAN MCINNISH</b>	<b>1</b>	<b>O-170</b>	<b>0700-1900</b>	<b>SIERRA HS ICP</b>
<b>EMPF POTTS</b>	<b>X</b>	<b>7/15</b>	<b>RODD POTTS</b>	<b>1</b>	<b>O-120</b>	<b>0700-1900</b>	<b>SIERRA HS ICP</b>
<b>REMS 1</b>		<b>7/12</b>	<b>COREY THOMPSON</b>	<b>4</b>	<b>O-4</b>	<b>0700-1900</b>	<b>SIERRA HS ICP</b>
<b>AMB2 91</b>	<b>X</b>	<b>7/15</b>	<b>MARTIN MONDRAGON</b>	<b>2</b>	<b>E-91</b>	<b>0700-1900</b>	<b>SIERRA HS ICP</b>

**6. Work Assignments:**

- Patrol, monitor and mop up as necessary.
- Perform suppression repair to turn back standards.

**7. Special Instructions:**

- READS/REAFs/ARCHs/FOBs will check in and out with DIVS when entering/exiting the division.
- Ensure hydration and monitor fatigue through sufficient rest breaks to minimize heat-related injuries.
- Backhaul all trash and excess equipment.

<b>8. Communications</b>								
Name	Ch	Function	Rx Freq	Rx Tone	Tx Freq	Tx Tone	Mode	Notes
NIFC C2	1	COMMAND	170.4500	0.0	168.1000	(T2) 123.0	A	FENCE MEADOW LOOKOUT
NIFC T3	10	TACTICAL	168.6000	0.0	168.6000	(T2) 123.0	A	
A/G CMD	14	A/G CMD	170.0750	0.0	170.0750	0.0	A	
CALCORD	15	TACTICAL	156.0750	(T6) 156.7	156.0750	(T6) 156.7	A	
AIRGUARD	16	EMERGENCY	168.6250	0.0	168.6250	(T1) 110.9	A	EMERGENCY

**9. Prepared by: Name:** Brad Paige                      RESL (t)                      Signature:

**ICS 204**                      Date/Time: 7/8/2024      2200                      Personnel Count: 9







# ASSIGNMENT LIST (ICS 204 WF)

CONTROLLED UNCLASSIFIED  
INFORMATION/BASIC

<b>1. Incident Name:</b> <b>BASIN INCIDENT</b>		<b>2. Operational Period:</b> Date From: 07/09/24    Date To: 07/10/24 Time From: 0700    Time To: 0700				<b>3. Branch</b> <b>Group</b>  <b>Suppression Repair</b>		
<b>4. Operations Personnel:</b>					Page 1 of 5			
Operations Section Chief: <b>Daniel Diaz, Sal Torres, Mark Lamont</b>					Night Ops:			
Branch Director:					Branch Safety: <b>Al Goughner</b>			
Division/Group Supervisor: <b>Clint Wade, Eric Daniel(t)</b>					Air Attack: <b>Pat Basch, Brad Sellers</b>			
<b>5. Resources Assigned:</b>		<b>** Resources Below in Bold are 12 Hour **</b>						
Resource Identifier	ALS	LWD	Leader	Personnel	Request #	Hours	Reporting Location	
HC2IA MCKENZIE RIVER		7/16	<b>DARIN COLLINS</b>	21	<b>C-37</b>	0700-1900	<b>SIERRA HS ICP</b>	
ENG3 ENF 333		7/15	<b>WILLIAM DUARTE</b>	5	<b>E-178</b>	0700-1900	<b>SIERRA HS ICP</b>	
ENG3 TNF 334		7/15	<b>ALEX RODRIGUEZ</b>	5	<b>E-176</b>	0700-1900	<b>SIERRA HS ICP</b>	
ENG3 MISSOULA 363	X	7/15	<b>TIM DEVOS</b>	5	<b>E-5</b>	0700-1900	<b>SIERRA HS ICP</b>	
ENG3 PVT J3 CONTRACTING 177		7/15	<b>DAN TEGART</b>	3	<b>E-177</b>	0700-1900	<b>SIERRA HS ICP</b>	
DO22 SNF 2		7/10	<b>JOSH PERKINS</b>	3	<b>E-13</b>	0700-1900	<b>SIERRA HS ICP</b>	
DO22 PVT B&C DEMO 143		7/13	<b>WADE FIELDS</b>	2	<b>E-143</b>	0700-1900	<b>SIERRA HS ICP</b>	
DO22 PVT BLACK KNIGHT 159		7/16	<b>TRAVIS MENDES</b>	2	<b>E-159</b>	0700-1900	<b>SIERRA HS ICP</b>	
DO22 PVT KROEKER 142		7/13	<b>MARTIN MENDOZA</b>	2	<b>E-142</b>	0700-1900	<b>SIERRA HS ICP</b>	
DO22 PVT LEESVILLE 161		7/16	<b>DOMINIC RUBINI</b>	2	<b>E-161</b>	0700-1900	<b>SIERRA HS ICP</b>	
DO22 PALMER 160		7/15	<b>WALT PALMER</b>	2	<b>E-160</b>	0700-1900	<b>SIERRA HS ICP</b>	
DO22 PVT NORTHSTATE 57		7/12	<b>KYLE JOHNSON</b>	2	<b>E-57</b>	0700-1900	<b>SIERRA HS ICP</b>	
DO22 PVT SUMMITLAND 58		7/12	<b>MARK CAMPBELL</b>	2	<b>E-58</b>	0700-1900	<b>SIERRA HS ICP</b>	
WTT1 BIG PINES 2313		7/13	<b>JAMES SCHLIEKER</b>	2	<b>E-73</b>	0700-1900	<b>SIERRA HS ICP</b>	
WTT2 SNF 21		7/10	<b>WILLIAM CAVAGNARO</b>	2	<b>E-41</b>	0700-1900	<b>SIERRA HS ICP</b>	
WTT2 BLACKTIMBER 214		7/18	<b>MICHAEL RUDOLPH</b>	2	<b>E-214</b>	0700-1900	<b>SIERRA HS ICP</b>	
WTT2 PVT LOOMIS 175		7/16	<b>JEAN LOOMIS</b>	2	<b>E-175</b>	0700-1900	<b>SIERRA HS ICP</b>	
WTS2 BRAUN		7/14	<b>MARTIN BRAUN</b>	1	<b>E-84</b>	0700-1900	<b>SIERRA HS ICP</b>	
<b>6. Work Assignments:</b>								
- Repair contingency lines to the suppression repair standards.								
<b>7. Special Instructions:</b>								
- READs/REAfS/ARCHs/FOBs will check in and out with DIVS when entering/exiting the division.								
- Backhaul all trash and excess equipment.								
- Report to law enforcement any unauthorized vehicles in evacuated areas.								
- Coordinate with READs prior to performing suppression repair efforts.								
- Ensure hydration and monitor fatigue through sufficient rest breaks to minimize heat-related injuries.								
<b>8. Communications</b>								
Name	Ch	Function	Rx Freq	Rx Tone	Tx Freq	Tx Tone	Mode	Notes
NIFC C2	1	COMMAND	170.4500	0.0	168.1000	(T2) 123.0	A	FENCE MEADOW LOOKOUT
R5 T6	8	TACTICAL	168.2375	0.0	168.2375	(T2) 123.0	A	
A/G CMD	14	A/G CMD	170.0750	0.0	170.0750	0.0	A	
CALCORD	15	TACTICAL	156.0750	(T6) 156.7	156.0750	(T6) 156.7	A	
AIRGUARD	16	EMERGENCY	168.6250	0.0	168.6250	(T1) 110.9	A	EMERGENCY
<b>9. Prepared by: Name:</b> Brad Paige    RESL (t)								
						Signature:		
<b>ICS 204</b>		Date/Time: 7/8/2024    2200				Personnel Count: 65		

# ASSIGNMENT LIST (ICS 204 WF)

CONTROLLED UNCLASSIFIED  
INFORMATION//BASIC

<b>1. Incident Name:</b> <b>BASIN INCIDENT</b>	<b>2. Operational Period:</b> Date From: 07/09/24    Date To: 07/10/24 Time From: 0700    Time To: 0700	<b>3. Branch</b> <b>Group</b>  <b>Suppression</b> <b>Repair</b>
<b>4. Operations Personnel:</b>		Page 2 of 5

Operations Section Chief: <b>Daniel Diaz, Sal Torres, Mark Lamont</b>	Night Ops:
Branch Director:	Branch Safety: <b>Al Coughner</b>
Division/Group Supervisor: <b>Clint Wade, Eric Daniel(t)</b>	Air Attack: <b>Pat Basch, Brad Sellers</b>

5. Resources Assigned:	** Resources Below in Bold are 12 Hour **							
Resource Identifier	ALS	LWD	Leader	Personnel	Request #	Hours	Reporting Location	
WTS3 PVT VALLEY FARM SERVICE 224		7/18	<b>JOEL HEDDON</b>	1	<b>E-224</b>	0700-1900	SIERRA HS ICP	
FMOD TREE GUYS 118		7/12	<b>NICK LOESCH</b>	2	<b>O-118</b>	0700-1900	SIERRA HS ICP	
FMOD PVT JACKSON 119		7/12	<b>KYLE JACKSON</b>	2	<b>O-119</b>	0700-1900	SIERRA HS ICP	
FMOD TIMBERSMITH 268		7/18	<b>MATTHEW MECKLEY</b>	2	<b>O-268</b>	0700-1900	SIERRA HS ICP	
FMOD TIMBERSMITH 269		7/17	<b>TOMMY DAVIS</b>	2	<b>O-269</b>	0700-1900	SIERRA HS ICP	
FMOD TIMBERSMITH 270		7/17	<b>DANIEL WADER</b>	2	<b>O-270</b>	0700-1900	SIERRA HS ICP	
FMOD PVT ENTERPRISES 273		7/17	<b>JOSIAH PARKER</b>	2	<b>O-273</b>	0700-1900	SIERRA HS ICP	
FMOD PVT A&F 274		7/18	<b>CONNOR FAOURNIER</b>	2	<b>O-274</b>	0700-1900	SIERRA HS ICP	
FMOD PVT UNDERDOG TIMBER 275		7/18	<b>RICHARD BROWN</b>	2	<b>O-275</b>	0700-1900	SIERRA HS ICP	
MAST PVT RJW ENTERPRISE 183		7/15	<b>ROBER WALKER</b>	1	<b>E-183</b>	0700-1900	SIERRA HS ICP	
MAST ASHBROOK 184		7/15	<b>ANDREW JACOBSON</b>	2	<b>E-184</b>	0700-1900	SIERRA HS ICP	
MAST PVT MCKELLAR 220		7/19	<b>JESSE ELLIS</b>	2	<b>E-220</b>	0700-1900	SIERRA HS ICP	
MAST PVT NORTHSTATE 221		7/17	<b>TYLER WAITS</b>	2	<b>E-221</b>	0700-1900	SIERRA HS ICP	
MAST PVT BELING 222		7/17	<b>BRYANT BOWMAN</b>	2	<b>E-222</b>	0700-1900	SIERRA HS ICP	
MAST GENERAL LEE 223		7/17	<b>JEREMY TODD</b>	2	<b>E-223</b>	0700-1900	SIERRA HS ICP	
MAST PVT GENERAL LEE 244		7/20	<b>NICHOLAS NEWMAN</b>	2	<b>E-244</b>	0700-1900	SIERRA HS ICP	
MAST PVT DOUBLE TREE 245		7/21	<b>JESTON SMITH</b>	2	<b>E-245</b>	0700-1900	SIERRA HS ICP	
MAST PVT RJW ENTERPRISE 246		7/21	<b>HUNTER ROSENFELD</b>	2	<b>E-246</b>	0700-1900	SIERRA HS ICP	

**6. Work Assignments:**  
- Repair contingency lines to the suppression repair standards.

**7. Special Instructions:**  
- READs/REAFs/ARCHs/FOBs will check in and out with DIVS when entering/exiting the division.  
- Backhaul all trash and excess equipment.  
- Report to law enforcement any unauthorized vehicles in evacuated areas.  
- Coordinate with READs prior to performing suppression repair efforts.  
- Ensure hydration and monitor fatigue through sufficient rest breaks to minimize heat-related injuries.

**8. Communications**


Name	Ch	Function	Rx Freq	Rx Tone	Tx Freq	Tx Tone	Mode	Notes
NIFC C2	1	COMMAND	170.4500	0.0	168.1000	(T2) 123.0	A	FENCE MEADOW LOOKOUT
R5 T6	8	TACTICAL	168.2375	0.0	168.2375	(T2) 123.0	A	
A/G CMD	14	A/G CMD	170.0750	0.0	170.0750	0.0	A	
CALCORD	15	TACTICAL	156.0750	(T6) 156.7	156.0750	(T6) 156.7	A	
AIRGUARD	16	EMERGENCY	168.6250	0.0	168.6250	(T1) 110.9	A	EMERGENCY

**9. Prepared by: Name:** Brad Paige                      RESL (t)                      Signature:

**ICS 204**                      Date/Time: 7/8/2024    2200                      Personnel Count: 34

# ASSIGNMENT LIST (ICS 204 WF)


CONTROLLED UNCLASSIFIED  
INFORMATION//BASIC

<b>1. Incident Name:</b>		<b>2. Operational Period:</b>				<b>3. Branch</b>		<b>Group</b>		
<b>BASIN INCIDENT</b>		Date From: 07/09/24	Date To: 07/10/24	Time From: 0700	Time To: 0700	<b>Suppression Repair</b>		<b>Page 3 of 5</b>		
<b>4. Operations Personnel:</b>		Operations Section Chief: <b>Daniel Diaz, Sal Torres, Mark Lamont</b>		Night Ops:						
Branch Director:		Branch Safety: <b>Al Coughner</b>		Air Attack: <b>Pat Basch, Brad Sellers</b>						
Division/Group Supervisor: <b>Clint Wade, Eric Daniel(t)</b>										
<b>5. Resources Assigned:</b>		<b>** Resources Below in Bold are 12 Hour **</b>								
Resource Identifier	ALS	LWD	Leader	Personnel	Request #	Hours	Reporting Location			
GRD1 CUTTING EDGE 79		7/12	<b>ZACH MAY</b>	2	<b>E-79</b>	0700-1900	<b>SIERRA HS ICP</b>			
GRD1 ASHBROOK 80		7/12	<b>JUSTIN CROSS</b>	2	<b>E-80</b>	0700-1900	<b>SIERRA HS ICP</b>			
SKID1 PVT RJW ENTERPRISES 209		7/16	<b>LUKE BROCK</b>	2	<b>E-209</b>	0700-1900	<b>SIERRA HS ICP</b>			
SKID PVT SUMMIT LAND MGT 210		7/18	<b>WALT WILLIAMS</b>	1	<b>E-210</b>	0700-1900	<b>SIERRA HS ICP</b>			
SKID1 PVT LASSEN EQUIPMENT 211		7/18	<b>DAREN WARD</b>	2	<b>E-211</b>	0700-1900	<b>SIERRA HS ICP</b>			
SKID2 PVT LITE ON LAND 212		7/17	<b>CODY PARKER</b>	2	<b>E-212</b>	0700-1900	<b>SIERRA HS ICP</b>			
EXCA2 PVT STRICKLAND 66		7/12	<b>JASON STRICKLAND</b>	2	<b>E-66</b>	0700-1900	<b>SIERRA HS ICP</b>			
EXCA2 LONESTAR 67		7/12	<b>DAN RAMOS</b>	2	<b>E-67</b>	0700-1900	<b>SIERRA HS ICP</b>			
FEL1 PVT RJW 230		7/18	<b>ROBERT WALKER</b>	2	<b>E-230</b>	0700-1900	<b>SIERRA HS ICP</b>			
FELB BRENNAN		7/19	<b>BRIAN BRENNAN</b>	1	<b>O-278</b>	0700-1900	<b>SIERRA HS ICP</b>			
FELB MACAL		7/18	<b>RUSS MACAL</b>	1	<b>O-280</b>	0700-1900	<b>SIERRA HS ICP</b>			
TFLD RADER		7/13	<b>DYLAN RADER</b>	1	<b>O-83</b>	0700-1900	<b>SIERRA HS ICP</b>			
TFLD REID		7/16	<b>DEREK REID</b>	1	<b>O-182</b>	0700-1900	<b>SIERRA HS ICP</b>			
TFLD(t) JOHNSON		7/15	<b>JOEL JOHNSON</b>	1	<b>O-107</b>	0700-1900	<b>SIERRA HS ICP</b>			
TFLD WEBSTER		7/13	<b>RYAN WEBSTER</b>	1	<b>O-222</b>	0700-1900	<b>SIERRA HS ICP</b>			
HEQB ADAMS		7/16	<b>TOMMY ADAMS</b>	1	<b>O-108</b>	0700-1900	<b>SIERRA HS ICP</b>			
HEQB GLAZENER		7/15	<b>CODY GLAZENER</b>	1	<b>O-184</b>	0700-1900	<b>SIERRA HS ICP</b>			
HEQB GUTIERREZ		7/15	<b>ANIBAL GUTIERREZ</b>	1	<b>O-221</b>	0700-1900	<b>SIERRA HS ICP</b>			
<b>6. Work Assignments:</b>										
- Repair contingency lines to the suppression repair standards.										
<b>7. Special Instructions:</b>										
- READs/REAFs/ARCHs/FOBs will check in and out with DIVS when entering/exiting the division.										
- Backhaul all trash and excess equipment.										
- Report to law enforcement any unauthorized vehicles in evacuated areas.										
- Coordinate with READs prior to performing suppression repair efforts.										
- Ensure hydration and monitor fatigue through sufficient rest breaks to minimize heat-related injuries.										
<b>8. Communications</b>										
Name	Ch	Function	Rx Freq	Rx Tone	Tx Freq	Tx Tone	Mode	Notes		
NIFC C2	1	COMMAND	170.4500	0.0	168.1000	(T2) 123.0	A	FENCE MEADOW LOOKOUT		
R5 T6	8	TACTICAL	168.2375	0.0	168.2375	(T2) 123.0	A			
A/G CMD	14	A/G CMD	170.0750	0.0	170.0750	0.0	A			
CALCORD	15	TACTICAL	156.0750	(T6) 156.7	156.0750	(T6) 156.7	A			
AIRGUARD	16	EMERGENCY	168.6250	0.0	168.6250	(T1) 110.9	A	EMERGENCY		
<b>9. Prepared by: Name:</b>		Brad Paige			RESL (t)			Signature: 		
ICS 204		Date/Time: 7/8/2024 2200			Personnel Count: 26					



# ASSIGNMENT LIST (ICS 204 WF)

CONTROLLED UNCLASSIFIED  
INFORMATION//BASIC

<b>1. Incident Name:</b>		<b>2. Operational Period:</b>				<b>3. Branch</b>		<b>Group</b>	
<b>BASIN INCIDENT</b>		Date From: 07/09/24		Date To: 07/10/24		<b>Suppression Repair</b>		<b>Page 4 of 5</b>	
		Time From: 0700		Time To: 0700					
<b>4. Operations Personnel:</b>									
Operations Section Chief: <b>Daniel Diaz, Sal Torres, Mark Lamont</b>					Night Ops:				
Branch Director:					Branch Safety: <b>Al Coughner</b>				
Division/Group Supervisor: <b>Clint Wade, Eric Daniel(t)</b>					Air Attack: <b>Pat Basch, Brad Sellers</b>				
<b>5. Resources Assigned:</b>									
<b>** Resources Below in Bold are 12 Hour **</b>									
Resource Identifier	ALS	LWD	Leader	Personnel	Request #	Hours	Reporting Location		
HEQB STERNER		7/16	<b>KYLE STERNER</b>	1	O-185	0700-1900	<b>SIERRA HS ICP</b>		
SOFR HUBBY		7/13	<b>BOBBY HUBBY</b>	1	O-128	0700-1900	<b>SIERRA HS ICP</b>		
SOFR DIERSING		7/13	<b>PAUL DIERSING</b>	1	O-126	0700-1900	<b>SIERRA HS ICP</b>		
EMPF BATTAD	X	7/11	<b>RICHARD BATTAD</b>	1	O-14	0700-1900	<b>SIERRA HS ICP</b>		
EMTF(t) LEHMAN			<b>EUGENE LEHMAN</b>	1	O-13	0700-1900	<b>SIERRA HS ICP</b>		
EMPF COPEMAN	X	7/15	<b>ROYCE COPEMAN</b>	1	O-167	0700-1900	<b>SIERRA HS ICP</b>		
AMB2 MA781 (ALS)	X	7/14	<b>RICARDO LLAMAS</b>	2	E-166	0700-1900	<b>SIERRA HS ICP</b>		
ARCH BAPTISTA		7/14	<b>MOLLY BAPTISTA</b>	1	O-158	0700-1900	<b>SIERRA HS ICP</b>		
ARCH DUNN		7/14	<b>MORGAN DUNN</b>	1	O-159	0700-1900	<b>SIERRA HS ICP</b>		
ARCH ATKINS		7/14	<b>MARISSA ATKINS</b>	1	O-160	0700-1900	<b>SIERRA HS ICP</b>		
ARCH RAY		7/17	<b>MOLLY RAY</b>	1	O-256	0700-1900	<b>SIERRA HS ICP</b>		
ARCH GASSAWAY		7/17	<b>LINN GASSAWAY</b>	1	O-286	0700-1900	<b>SIERRA HS ICP</b>		
REAF QUINTERO		7/12	<b>NATHALIE QUINTERO</b>	1	O-87	0700-1900	<b>SIERRA HS ICP</b>		
REAF SOWARDS		7/14	<b>TRAVIS SOWARDS</b>	1	O-162	0700-1900	<b>SIERRA HS ICP</b>		
REAF COURTER		7/14	<b>JOSHUA COURTER</b>	1	O-89	0700-1900	<b>SIERRA HS ICP</b>		
REAF TAKENAKA		7/15	<b>KELLEN TAKENAKA</b>	1	O-88	0700-1900	<b>SIERRA HS ICP</b>		
REAF ROBINSON		7/17	<b>MATTHEW ROBINSON</b>	1	O-263	0700-1900	<b>SIERRA HS ICP</b>		
REAF STEELE		7/18	<b>REBECCA STEELE</b>	1	O-285	0700-1900	<b>SIERRA HS ICP</b>		
<b>6. Work Assignments:</b>									
- Repair contingency lines to the suppression repair standards.									
<b>7. Special Instructions:</b>									
- READs/REAFs/ARCHs/FOBs will check in and out with DIVS when entering/exiting the division.									
- Backhaul all trash and excess equipment.									
- Report to law enforcement any unauthorized vehicles in evacuated areas.									
- Coordinate with READs prior to performing suppression repair efforts.									
- Ensure hydration and monitor fatigue through sufficient rest breaks to minimize heat-related injuries.									
<b>8. Communications</b>									
Name	Ch	Function	Rx Freq	Rx Tone	Tx Freq	Tx Tone	Mode	Notes	
NIFC C2	1	COMMAND	170.4500	0.0	168.1000	(T2) 123.0	A	FENCE MEADOW LOOKOUT	
R5 T6	8	TACTICAL	168.2375	0.0	168.2375	(T2) 123.0	A		
A/G CMD	14	A/G CMD	170.0750	0.0	170.0750	0.0	A		
CALCORD	15	TACTICAL	156.0750	(T6) 156.7	156.0750	(T6) 156.7	A		
AIRGUARD	16	EMERGENCY	168.6250	0.0	168.6250	(T1) 110.9	A	EMERGENCY	
<b>9. Prepared by: Name:</b>									
Brad Paige			RESL (t)			Signature: 			
<b>ICS 204</b>									
				Date/Time: 7/8/2024 2200		Personnel Count: 19			

# ASSIGNMENT LIST (ICS 204 WF)

CONTROLLED UNCLASSIFIED  
INFORMATION//BASIC

<b>1. Incident Name:</b> <b>BASIN INCIDENT</b>	<b>2. Operational Period:</b> Date From: 07/09/24    Date To: 07/10/24 Time From: 0700    Time To: 0700	<b>3. Branch</b> <b>Group</b> <b>Suppression</b> <b>Repair</b>
---	---	--

**4. Operations Personnel:** Page 5 of 5

Operations Section Chief: <b>Daniel Diaz, Sal Torres, Mark Lamont</b>	Night Ops:
Branch Director:	Branch Safety: <b>Al Coughner</b>
Division/Group Supervisor: <b>Clint Wade, Eric Daniel(t)</b>	Air Attack: <b>Pat Basch, Brad Sellers</b>

5. Resources Assigned:		** Resources Below in Bold are 12 Hour **						
Resource Identifier	ALS	LWD	Leader	Personnel	Request #	Hours	Reporting Location	
CULS CHARLEY		<b>7/12</b>	<b>DIRK CHARLEY</b>	<b>1</b>	<b>O-181</b>	<b>0700-1900</b>	<b>SIERRA HS ICP</b>	

**6. Work Assignments:**

- Repair contingency lines to the suppression repair standards.

**7. Special Instructions:**

- READs/REAFs/ARCHs/FOBs will check in and out with DIVS when entering/exiting the division.
- Backhaul all trash and excess equipment.
- Report to law enforcement any unauthorized vehicles in evacuated areas.
- Coordinate with READs prior to performing suppression repair efforts.
- Ensure hydration and monitor fatigue through sufficient rest breaks to minimize heat-related injuries.

**8. Communications**

Name	Ch	Function	Rx Freq	Rx Tone	Tx Freq	Tx Tone	Mode	Notes
NIFC C2	1	COMMAND	170.4500	0.0	168.1000	(T2) 123.0	A	FENCE MEADOW LOOKOUT
R5 T6	8	TACTICAL	168.2375	0.0	168.2375	(T2) 123.0	A	
A/G CMD	14	A/G CMD	170.0750	0.0	170.0750	0.0	A	
CALCORD	15	TACTICAL	156.0750	(T6) 156.7	156.0750	(T6) 156.7	A	
AIRGUARD	16	EMERGENCY	168.6250	0.0	168.6250	(T1) 110.9	A	EMERGENCY

**9. Prepared by: Name:** Brad Paige                      RESL (t)                      Signature:

ICS 204                      Date/Time: 7/8/2024    2200                      Personnel Count: 1

# ASSIGNMENT LIST (ICS 204 WF)

CONTROLLED UNCLASSIFIED  
INFORMATION//BASIC

<b>1. Incident Name:</b> <b>BASIN INCIDENT</b>	<b>2. Operational Period:</b> Date From: 07/09/24    Date To: 07/10/24 Time From: 0700            Time To: 0700	<b>3. Branch</b> <b>IA</b>	<b>Division</b>
---	---	-------------------------------	-----------------

**4. Operations Personnel:** Page 1 of 1

Operations Section Chief: <b>Daniel Diaz, Sal Torres, Mark Lamont</b>	Night Ops:
Branch Director:	Branch Safety:
Division/Group Supervisor: <b>Joseph Bunton</b>	Air Attack: <b>Pat Basch, Brad Sellers</b>

**5. Resources Assigned:** \*\* Resources Below in Bold are 12 Hour \*\*

Resource Identifier	ALS	LWD	Leader	Personnel	Request #	Hours	Reporting Location
<b>HC1 SIERRA IHC</b>		7/18	<b>ROBY ALAN</b>	21	C-4	<b>0700-1900</b>	<b>SIERRA HS ICP</b>
<b>HC2IA HORSESHOE MEADOW</b>		7/9	<b>BROCK MOREHEAD</b>	21	C-10	<b>0700-1900</b>	<b>SIERRA HS ICP</b>
<b>WFM1 NPS BLACK HILLS 265</b>		7/18	<b>LEE DUEKER</b>	10	O-265	<b>0700-1900</b>	<b>SIERRA HS ICP</b>
<b>ENG3 SHF 372</b>		7/11	<b>KEVIN MOGLIA</b>	5	E-4	<b>0700-1900</b>	<b>SIERRA HS ICP</b>
<b>ENG3 STF 312</b>		7/9	<b>HEATHER WOODMAN</b>	5	E-51	<b>0700-1900</b>	<b>SIERRA HS ICP</b>
<b>ENG3 STF 322</b>		7/10	<b>DAVID MCCREA</b>	6	E-2	<b>0700-1900</b>	<b>SIERRA HS ICP</b>
<b>TFLD STEPHENS</b>		7/13	<b>BOBBY STEPHENS</b>	1	O-106	<b>0700-1900</b>	<b>SIERRA HS ICP</b>

**6. Work Assignments:**

- Respond as dispatched to initial attack wildfires within the designated IA area.
- Be prepared for reassignments to support future incident needs.

**7. Special Instructions:**

- 100% suppression of any new starts within the IA area.
- Ensure hydration and monitor fatigue through sufficient rest breaks to minimize heat-related injuries.

**8. Communications**

Name	Ch	Function	Rx Freq	Rx Tone	Tx Freq	Tx Tone	Mode	Notes
NIFC C2	1	COMMAND	170.4500	0.0	168.1000	(T2) 123.0	A	FENCE MEADOW LOOKOUT
NIFC T4	4	TACTICAL	166.7250	0.0	166.7250	(T2) 123.0	A	
A/G CMD	14	A/G CMD	170.0750	0.0	170.0750	0.0	A	
CALCORD	15	TACTICAL	156.0750	(T6) 156.7	156.0750	(T6) 156.7	A	
AIRGUARD	16	EMERGENCY	168.6250	0.0	168.6250	(T1) 110.9	A	EMERGENCY

**9. Prepared by: Name:** Brad Paige                      RESL (t)                      Signature:

**ICS 204**                      Date/Time: 7/8/2024    2200                      Personnel Count: 69

# ASSIGNMENT LIST (ICS 204 WF)

CONTROLLED UNCLASSIFIED  
INFORMATION//BASIC

<b>1. Incident Name:</b> <b>BASIN INCIDENT</b>	<b>2. Operational Period:</b> Date From: 07/09/24      Date To: 07/10/24 Time From: 0700              Time To: 0700	<b>3. Branch</b> <b>Division</b>  <b>NIGHT</b>
<b>4. Operations Personnel:</b>		Page 1 of 1


Operations Section Chief: <b>Daniel Diaz, Sal Torres, Mark Lamont</b> Branch Director:	Night Ops: Branch Safety:
Division/Group Supervisor: <b>Garth Crow, Samuel Jerman(t)</b>	Air Attack: <b>Pat Basch, Brad Sellers</b>

5. Resources Assigned:		** Resources Below in Bold are 12 Hour **					
Resource Identifier	ALS	LWD	Leader	Personnel	Request #	Hours	Reporting Location
ENG3 S/T ANF 1600C		7/9	<b>SALVADOR CORTEZ</b>	26	E-40	1900-0700	SIERRA HS ICP
ENG3 S/T BDF 6601C		7/9	<b>RONALD NAVARRO</b>	26	E-44	1900-0700	SIERRA HS ICP
WTT2 BDF 232		7/10	<b>LUIS CHAVEZ</b>	2	E-185	1900-0700	SIERRA HS ICP
SOFR FULLMER		7/16	<b>DONALD FULLMER</b>	1	O-179	1900-0700	SIERRA HS ICP
EMPF STILLMAN	X	7/15	<b>THOMAS STILLMAN</b>	1	O-168	1900-0700	SIERRA HS ICP
EMTF RIOUX		7/14	<b>AUSTIN RIOUX</b>	1	O-124	1900-0700	SIERRA HS ICP
AMB2 MA782 (ALS)	X	7/11	<b>NOLAN BARROWS</b>	2	E-14	0700-1900	SIERRA HS ICP

**6. Work Assignments:**  
- Monitor, patrol and mop up as necessary.

**7. Special Instructions:**  
- Ensure hydration and monitor fatigue through sufficient rest breaks to minimize heat-related injuries.

8. Communications								
Name	Ch	Function	Rx Freq	Rx Tone	Tx Freq	Tx Tone	Mode	Notes
NIFC C2	1	COMMAND	170.4500	0.0	168.1000	(T2) 123.0	A	FENCE MEADOW LOOKOUT
NIFC T3	10	TACTICAL	168.6000	0.0	168.6000	(T2) 123.0	A	
A/G CMD	14	A/G CMD	170.0750	0.0	170.0750	0.0	A	
CALCORD	15	TACTICAL	156.0750	(T6) 156.7	156.0750	(T6) 156.7	A	
AIRGUARD	16	EMERGENCY	168.6250	0.0	168.6250	(T1) 110.9	A	EMERGENCY

**9. Prepared by: Name:** Brad Paige      RESL (t)      Signature: 

ICS 204      Date/Time: 7/8/2024      2200      Personnel Count: 59

# ICS 205 - INCIDENT RADIO COMMUNICATIONS PLAN

1. Incident Name: BASIN INCIDENT Incident Channels		2. Date/Time Prepared Date: 07/08/2024 Time: 1830		3. Operational Period: Date From: 07/09/24 Time From: 0700		Date To: 07/10/24 Time To: 0700			
4. Communications									
Ch#	Function	Name	Assigned To	Rx Freq	Rx Tone	Tx Freq	Tx Tone	Mode	Notes
1	COMMAND	NIFC C2	ALL DIVS	170.4500	0.0	168.1000	(T2) 123.0	A	FENCE MEADOW LOOKOUT
2	COMMAND	NIFC C8	ALL DIVS	169.5375	0.0	164.7125	(T2) 123.0	A	DELILAH LOOKOUT
3	COMMAND	NIFC C9	ALL DIVS	170.0125	0.0	165.2500	(T2) 123.0	A	HOG MOUNTAIN
4	TACTICAL	NIFC T4	IA GROUP	166.7250	0.0	166.7250	(T2) 123.0	A	
5	TACTICAL	NIFC T5	DIV M	166.7750	0.0	166.7750	(T2) 123.0	A	
6	TACTICAL	NIFC T6	DIV U / Z	168.2500	0.0	168.2500	(T2) 123.0	A	
7	TACTICAL	R5 T5	DIV D	167.1125	0.0	167.1125	(T2) 123.0	A	
8	TACTICAL	R5 T6	SUP REPAIR	168.2375	0.0	168.2375	(T2) 123.0	A	
9	TACTICAL	R5 T7	UNASSIGNED	167.9625	0.0	167.9625	(T2) 123.0	A	
10	TACTICAL	NIFC T3	DIV A / NIGHT	168.6000	0.0	168.6000	(T2) 123.0	A	
11	DISPATCH	SNF 8	IA / BACK UP	172.2250	0.0	164.7875	(T8) 103.5	A	tone 8
12	DISPATCH	SNF 4	IA / BACK UP	172.2250	0.0	164.7875	(T4) 136.5	A	tone 4
13	A/G TAC	A/G TAC	ALL DIVS	169.9750	0.0	169.9750	0.0	A	
14	A/G CMD	A/G CMD	ALL DIVS	170.0750	0.0	170.0750	0.0	A	
15	TACTICAL	CALCORD	ALL DIVS	156.0750	(T6) 156.7	156.0750	(T6) 156.7	A	
16	EMERGENCY	AIRGUARD	ALL DIVS	168.6250	0.0	168.6250	(T1) 110.9	A	EMERGENCY
17									
18									
19									
20	EMERGENCY	AIRGUARD	ALL DIVS	168.6250	0.0	168.6250	(T1) 110.9	A	EMERGENCY
5. Special Instructions									
6. Prepared by (Communications Unit Leader): Name: Eric White 310-560-3733				Signature: /s/ Eric White					
ICS 205 - CONTROLLED UNCLASSIFIED INFORMATION//BASIC				NIMS IAP		Date/Time: 07/08/24		1830	

# Air Operations Summary (ICS 220)

<b>1. Incident Name:</b>  <div style="text-align: center; font-weight: bold; font-size: 1.2em;">BASIN INCIDENT</div>		<b>2. Operational Period:</b> Date From: 07/09/24      Date To: 07/10/24 Time From: 0700              Time To: 0700		<b>3. Sunrise:</b> 0544   <b>Sunset:</b> 2019		
<b>4. Remarks (safety notes, hazards, air operations special equipment, etc.):</b>  Multiple wires and transmission lines. Auberry Helibase 32180 Auberry Road Prather, CA, 93651 37^0 03.95 119^0 29.30		<b>5. Ready Alert Aircraft:</b>  Medivac: CHP H-40, CHP 42 New Incident: FM <b>8. Frequencies:</b> AM      FM Air/Air Fixed-Wing Briefing: 132.525      169.15 Air/Air Rotary-Wing - Flight Following: 124.225 Air/Ground (COM) (TAC): 170.075      169.9750 Command: 163.1 Deck Coordinator: 163.1 Take-Off & Landing Coordinator: 163.1 Air Guard: 163.1				
<b>7. Personnel:</b> Name: Phone Number: Air Operations Branch Director: Ted Visser 619-981-2409 Air Support Group Supervisor: Galen Young 575-574-8720      John Steadman 760-468-1974 Air Tactical Group Supervisor (AT15): Pat Bausch 559-281-0533      Brad Sellers 559-287-3552 Helicopter Coordinator: Brad Corbin 530-517-1452 Helibase Manager: Eleazar Martinez 559-359-7346      Sarah Hudson 702-755-4251		<b>6. Temporary Flight Restriction Number: 4/5664</b> Altitude: 11000 MSL      119.125 <b>9. Fixed-Wing (category/kind/type, make/model, N#, base):</b> Air Tactical Group Supervisor Aircraft: AT 15 Other Fixed-Wing Aircraft: Dispatch 559-500-4544 SNFBasin2024@gmail.com				
<b>10. Helicopters (use additional sheets as necessary):</b>						
FAA N#	Category/Kind/Type	Make/Model	Base	Available	Start	Remarks
A-13 H534	TYPE 2	Bell A1++	Dinkey	0830	0800	EU Tank
A-14 H538	TYPE 2	Bell A1++	Auberry	0830	0700	EU Tank
A-12 H522	TYPE 2	Bell A1++	Auberry	0830	0800	EU LongLine w/ Bucket
A-70 2KA	TYPE 1	K-MAX	Auberry	0830	0800	Bucket
A-36 0UH	TYPE 1	UH-60	Auberry	0830	0800	CWN Tank/Bucket
A-20 0FS	TYPE 1	UH-60	Auberry	0830	0700	Bucket
A-37 4VG	TYPE 1	UH-60	Auberry	0830	0800	Tanked/Bucket/CWN
<b>11. Prepared by:</b> Name: Ted Visser		Position/Title: AOBP		Date/Time:		Signature: <i>Ted Visser</i>

## INCIDENT ACTION PLAN SAFETY ANALYSIS (ICS 215A)

<b>1. Incident Name:</b>	<b>2. Operational Period:</b>	Date From:	7/9/24	Date To:	7/10/24
BASIN INCIDENT		Time From:	0700	Time To:	0700
<b>Incident Area</b>	<b>Hazard/Risks</b>	<b>Mitigations</b>			
ALL	Heat Related Fatigue & Overexertion	Remain hydrated, seek shade and take breaks to reduce exertion when and where possible. Access provided electrolytes, use as directed.			
ALL	Driving Hazards	Drive with caution and due regard, be cautious of potential for collision with other vehicles (civilian or fire apparatus), pedestrians, wildlife or obstructions in roadway.			
ALL	Snags	Identify potentially fire weakened trees and flag as hazardous. Coordinate with DIVS to have qualified fallers cut down hazard trees. Avoid hazard trees, particularly during high wind. Mitigate snag hazard before inserting personnel for line construction.			
ALL	Rolling Material	Be alert for roll out of burning debris that can cause fire below you. Utilize Lookouts. Do not have personnel working below you while digging line.			
ALL	Aircraft use: Fixed wing and helicopters	Coordinate helicopter use with air attack and helicopter manager. Ensure that personnel are clear of drop zone. Adhere to aviation procedures and refer to IRPG.			
ALL	Heavy Equipment Operations	Maintain awareness when working near operating heavy equipment, remain within view and communications of the operator(s).			
ALL	Medical - Lengthy patient evacuation/transport times	Plan to utilize air medical transport when transportation by ground could be extended. Stage ambulances in areas where extraction times will be extended.			
ALL	Entrapment - Spot Fire Suppression, Compromised Egress	Ensure LCES, Adhere to Fire Orders, Mitigate Watch Out Situations. Be aware of limited turn arounds for vehicles and narrow roads. Establish communications with ground crews.			
ALL	Slips/Trips/Falls	Watch footing and trip hazards. Maintain spacing while hiking and proceed slowly on steep slopes.			
ALL	Human Factors - Night Ops: Visibility, Fatigue	Drive within your illuminated view, use headlamps and other illumination devices to increase safe working conditions at night.			
ALL	Burns - Ash Pit/Stump Holes	Ensure all appropriate PPE is worn, be alert hazards within the burn while moping up.			
<b>5. Prepared By:</b>		Position/Title: SOF2(t)		Signature: /s/ N.Colonelli	
ICS 215A	Date/Time:	7/8/2024 / 2030			

## FINANCE MESSAGE

**Finance Email: [2024.basin.finance@firenet.gov](mailto:2024.basin.finance@firenet.gov)**



**CTR's, Shift Tickets and supporting documents** may be mailed to the email address above. If you are unable to send documents electronically you can drop off paper copies to Finance. Please submit documents either electronic **OR** hard copy. Do not submit duplicates. **Approving Officials** for CTRs & Shift Tickets please write legibly and print your name under your signature.

**Contract equipment** please note your resource order number on the top right of the shift ticket and note any down time in the remarks block. Make sure to record mileage for transports.

**Contract crews** – Crew Boss time starts at briefing. Contract crew member times start ½ hour later. Meal breaks need to be shown and time stops at arrival back at ICP or spike camp.

**All Local Government employees** MUST have a MARS account to complete and submit their F-42's for reimbursement.

**Authorization for Lodging** ended 6/28 for most resources. As of 6/29 full camp services were available and reimbursement for lodging expenses is only allowed for night shift resources.

**Water Logs** need to be filled out when pulling water from the water sources.

**Fire Replacement** - For replacement of non-cache items the requesting resource will take a completed OF-213 and OF-289 to the Comp/Claims Unit Leader for review. Requests for replacement of government-issued non-standard items brought from the home unit must be accompanied by a copy of a signed JHA or RA (IIBMH Chapter 30 Page 30-5). Based on the documentation provided a determination for replacement will be made by the Finance Section Chief, IC, or INBA. Damaged items will be surrendered to the Supply Unit. Replacement for normal wear and tear is through home unit project funds. Please do not wait until demob to begin this process.

The following resources need to please check in with Finance:

REQUEST NUMBER	RESOURCE NAME	ISSUE or QUESTION
E-31	G&J Truck	Date needed on shift ticket
O-254	All Terrain	Need miles
E-85	Northstate	Missing shift ticket
E-225	The Tree Guys	Need operator names on shift ticket
E-16	Nomadic Land	Missing shift ticket

THANKS FOR KEEPING UP ON YOUR TIMES!!!



**Basin Incident  
Human Resource Message  
July 9, 2024**

**Personality Factors in Emergency Personnel...**

Research indicates that emergency personnel have different personalities from the average person who has a less risky or demanding job.

Emergency personnel are more interested in details than people from other professions.

They take pride in doing a perfect job, set personal standards that are extremely high, and become frustrated when they fail. This attention to detail helps them do a better job, but it also sets them up for the stress associated with a failure to achieve high expectations.

They are action oriented. They are quick decision makers under pressure and task oriented. They seek immediate results and are easily bored.

Risk taking behaviors accompany action orientation in their personalities. They often seek sports activities that are highly stimulating and exciting because they are easily bored and need something to keep them alert.

They have an extreme sense of dedication.

They have a strong need to be liked by the people around them.

They have a difficult time expressing their emotions and are more prone to experiencing delayed stress responses and the effects of cumulative stress.

Consider your own personality, some of these traits may or may not fit....

-Janine Summy, Human Resource Specialist, 509-429-1206-

"I slept and dreamt that life was **joy**. I awoke and saw that life was **service**. I acted, and behold, **service** was **joy**." -Rabindranath Tagore-

## PUBLIC INFORMATION

Please share photos and video from the Basin Fire to be used on the Sierra National Forest's Facebook page, Inciweb & potentially the media. Photos can be airdropped or texted to PIOs after briefing, at the PIO yurt or emailed to: [2024.basin@firenet.gov](mailto:2024.basin@firenet.gov)

If the public or media approaches you with questions, please refer to them to our incident information phone: (559) 468-6809

### Incoming mail/packages:

Recipient Name and Unit Designation  
c/o Basin Fire Camp PIO  
33326 Lodge Road  
Tollhouse, CA 93667

### LOST AND FOUND – Located at the Information Yurt

Facebook



Inciweb



## RESOURCE ADVISOR MESSAGE

Below is a summary of the methods outlined in the suppression repair plan (SRP). It doesn't replace the full suppression repair plan, but it can be used as a cheat sheet. See the suppression repair plan for full details on each activity.

**OVERALL GOAL:** Leave the area better than you found it and leave no trace of suppression actions as much as possible.

**Fire Line:** Pull back soil berms (dozer, cup trenching, etc.), flush cut stumps where possible, restore ground cover, water bar where necessary, block/hide entrance and exit.

**Sensitive Natural and Cultural Areas:** These areas are flagged off with neon green and white. Give these areas a buffer and avoid causing additional ground disturbance.

**Heli-spots, drop point zones, sling sites, staging areas, medi-vac sites:** Remove trash, equipment; restore ground cover where possible/practical.

**Spike Camps:** Clear site equipment, back haul trash, restore ground cover where appropriate.

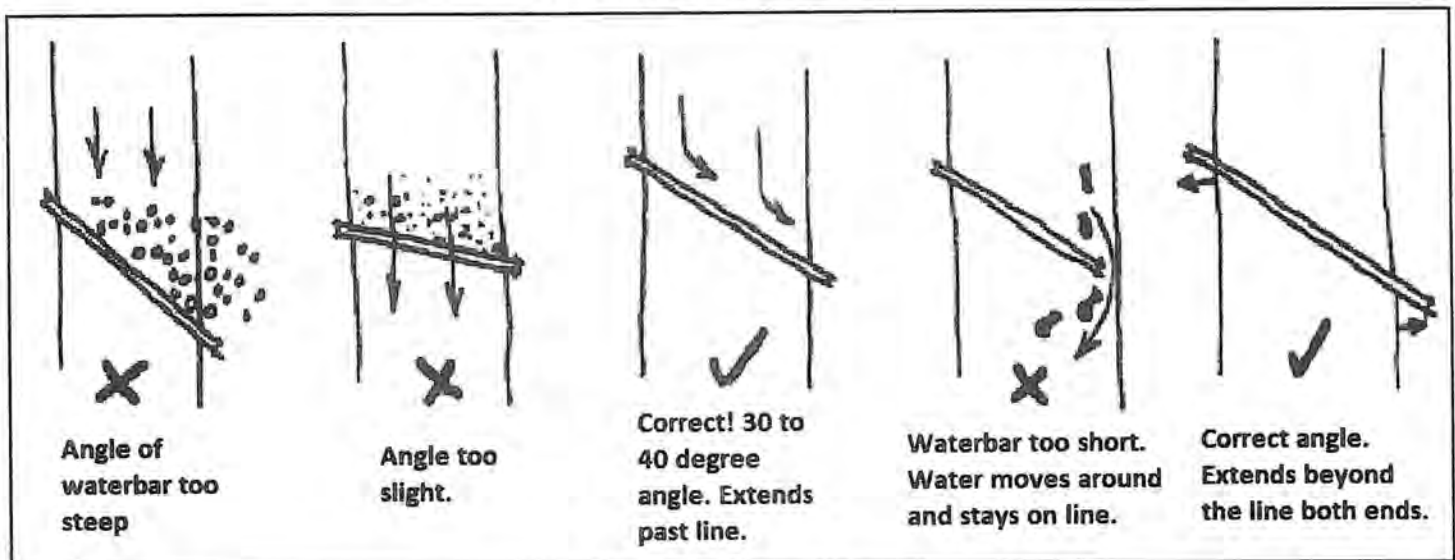
**Water Drafting/Pump Sites:** Restore water sources used or developed as draft sites to original condition. Remove any dams, dikes, or other impoundments created for fire suppression activities. Repair stream banks if damaged.

**Road Repair:** Restore roads to pre-incident condition according to their maintenance level. Repair suppression-related damage: Culvert function, rolling dips, ditch lines. Restore grade if needed. Remove/chip excess vegetation from clearing activities. Close access where appropriate to prevent unauthorized OHV use.

**Concentrations of Slash:** Slash will either be chipped or piled. See the SRP for details on slash piling.

**Trash and Backhaul:** Please pay attention to the little stuff, micro trash. Hose straps are a great example of micro trash.

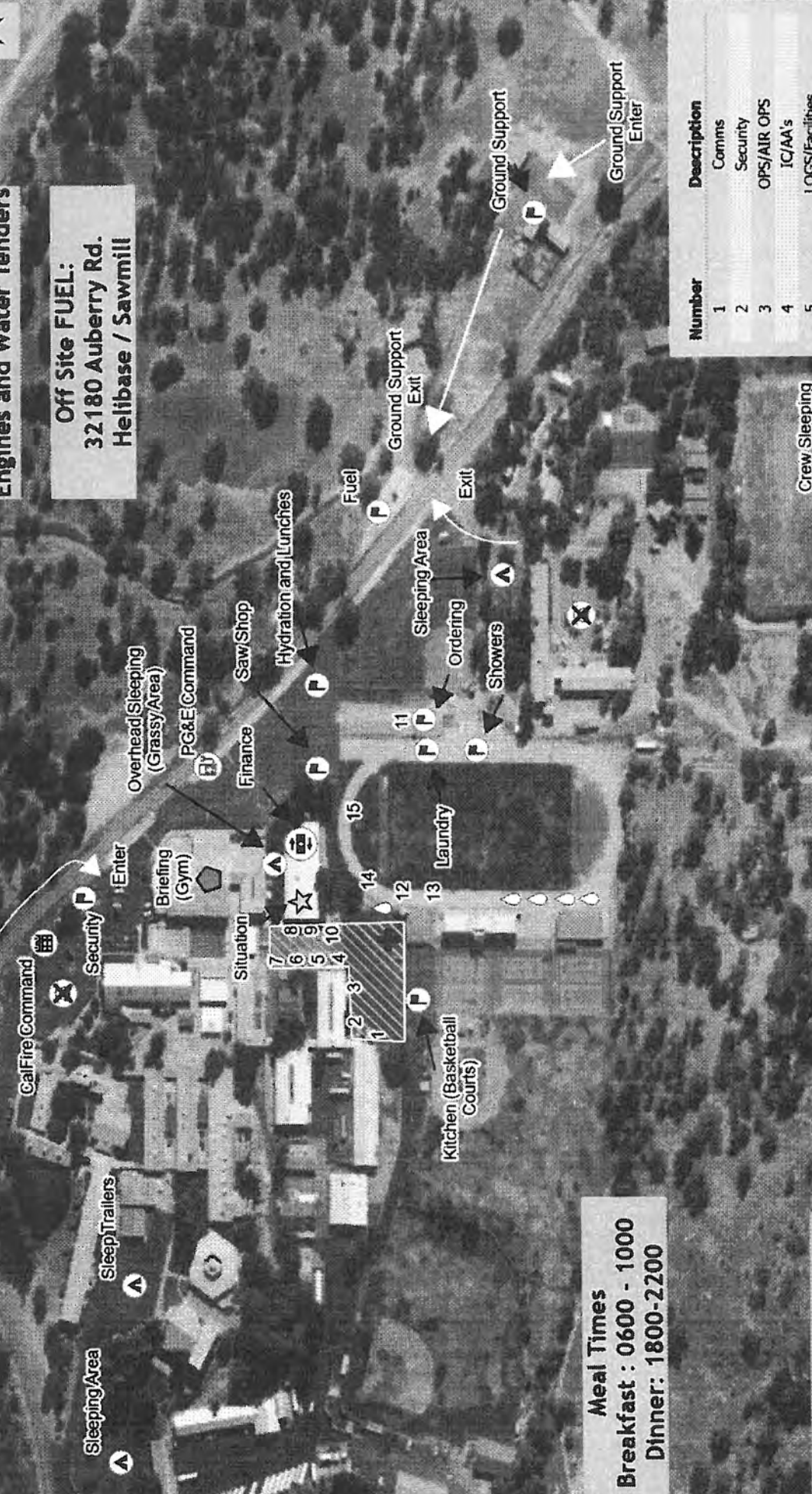
### Building Good Water Bars



Updated: 7/4/2024 2:12 PM

**Lodge Water Source:**  
\*32202 Lodge Rd\*  
Engines and Water Tenders

**Off Site FUEL:**  
32180 Auberry Rd.  
Helibase / Sawmill



**Meal Times**  
Breakfast : 0600 - 1000  
Dinner: 1800-2200

- Basin ICP**  
33326 Lodge Rd, Tollhouse, CA
- Brieing
  - ⊕ Finance
  - ☆ Situation
  - ▲ Sleeping
  - Support
  - × No Parking
  - ⬆ Frontline
  - ⊕ Medical
  - Cal Fire Command
  - ⊕ PG&E Command
  - Cooling Center
  - ▭ Trailer Row

**Shower**  
0500-1100, 1300-2200

**Laundry**  
0500-2200

**Reefer**  
0500-2100

Number	Description
1	Comms
2	Security
3	OPS/AIR OPS
4	IC/AA's
5	LOGS/Facilities
6	Plains/Training Specialist/Dermob/Docs
7	Clerical
8	IT
9	Check-In/Resources
10	Safety/Medical
11	Supply
12	HR/Liaison/Law
13	READS
14	PIO/Lost and Found
15	OES

# 3 DAYS LEFT TO CLOSE OUT WITH TRAINING

## TRAINING SPECIALIST MESSAGE

### TRAINERS:

If you leave the incident before your trainee, or if your trainee is no longer assigned to you, you will need to complete a performance evaluation for the time period your trainee was assigned to you.

### TRAINEES:

In order to receive documented credit for your training assignment you must close out with the Training Specialist before you Demob. Make sure you complete the exit interview (scan QR code) and bring your completed Eval Record and 225.

### CLOSE OUT CHECK LIST

- Collect PTB with signatures
- Have trainer complete evaluation record in back of PTB
- Have trainer complete trainee evaluation (225)
- Complete exit interview (Use QR code in IAP on TNSP page)
- Stop by the TNSP trailer to close out.



**Last Day to Register - Today, July 9, 2024**

**Last Day to check out - July 11, 2024**

If you have any questions, don't be hesitate to reach out.

**MANUEL MARTINEZ | TNSPt**

**818-742-8439**



Trainee Registration &  
Training Completion Form

### TRAINEES

Use this QR code to complete the registration and training completion process.

# Basin Incident DEMOB Procedures



In person check-out is being utilized on this incident. Monitor the IAP for the tentative DEMOB list. If there is an error on the dates, please communicate through your division or section to the check-in desk. They can then get the information verified and if needed, corrected.

Check out sheets will be available late afternoon on your last work day. Stop in at the DEMOB trailer to pick up your copy. Only get signatures from those sections that are highlighted.

1. All non-local resources will have at least 8 hours of rest prior to being released from the incident.
2. All resources will meet any agency-specific requirements on hours of travel per day or other travel restrictions.
3. Any heavy equipment operators or owners must have appropriate permits and follow any limitation on the movement of their equipment on public highways.
4. For an early release from the incident, prior to your last work day, an ICS 213 from your section must be submitted to DEMOB documenting an early release.
5. Emergency demobilization will be processed as quickly as possible. Individuals will be required to go through demobilization and checkout procedures. Demobilization and Resources Units will assure that manifests are changed as needed.
6. All resources needing airfare arranged will need to notify DEMOB 72 hours prior to the travel day.
7. Weed wash is co-located with the fuel tender. 32180 Auberry RD

Contact information Phone:

(925) 542-9173

Email: [2024.basin.demob@firenet.gov](mailto:2024.basin.demob@firenet.gov)

**TENTATIVE RELEASE  
BASIN CA-SNF-000731  
7-9-2024 TO 7-11-2024**

Request #	Time	Resource Name	Item Code
<b>7/9/2024</b>			
C-12	0700	STANISLAUS HOTSHOTS IHC	CRW1
C-14	0700	LOS PADRES IHC	CRW1
C-46	0700	REFORESTATION	CRW2
E-50	0700	ENG3 - 347	ENG3
E-188	0700	ENG3 - CASNF 342	ENG3
E-227	0700	CECIL LOGGING	CHP2
O-20	0700	PATTERSON DANIEL	PIO2
O-73	0700	HUDICK ELIZABETH	PIOT
O-76	0700	WATSON DANIEL	SEC2
O-86	0700	VAUGHAN, CASSIE M	READ
O-204	0700	STEWART, LEO E	BCMG
O-205	0700	ROMERO, JAMES FELIPE	BCMG
O-207	0700	BARNES, STEPHANIE	READ
<b>7/10/2024</b>			
C-9	0700	SEQUOIA - 10	CR2I
C-10	0700	HORSESHOE MEADOW IHC	CR2I
E-40	0700	1600 C	EST3
E-44	0700	6601C	EST3
E-51	0700	312	ENG3
E-53	0700	DOZ - 10	DZR2
O-188	0700	ARMSTRONG, KRISTINA MARIE	INBA
<b>7/11/2024</b>			
C-51	0700	BEAR DIVIDE HOTSHOTS IHC	CRW1
E-1	0700	342 STF	ENG3
E-2	0700	322	ENG3
E-3	0700	ENG - 334	ENG3
E-7	0700	ENGINE 352	ENG3
E-13	0700	SNF DOZER 2	DZR2
E-185	0700	232	WTT2
O-51	0700	GARCIA, ROLAND L	SOF2
O-52	0700	VEACH, TIMOTHY A	EQPM
O-77	0700	CURTIS, JEREMY JAMES	SEC1
O-87	0700	QUINTERO, NATHALIE	REAF
O-90	0700	OLVERA, NOE	HEQB
O-99	0700	MONROE, ROBERT PETER	SEC2





**Medical Incident Report**

FOR A **NON-EMERGENCY INCIDENT**: WORK THROUGH CHAIN OF COMMAND TO REPORT AND TRANSPORT INJURED PERSONNEL AS NECESSARY.

FOR A **MEDICAL EMERGENCY**: IDENTIFY ON SCENE POINT OF CONTACT BY NAME AND POSITION AND ANNOUNCE "MEDICAL EMERGENCY" TO INITIATE RESPONSE FROM COMMUNICATIONS

**Use the following items to communicate situation to communications/dispatch.**

- 1. CONTACT COMMUNICATIONS / DISPATCH** (Verify correct frequency prior to starting report)  
*Ex: "Communications, Div. Alpha. Stand-by for Emergency Traffic."*
- 2. INCIDENT STATUS:** Provide incident summary (including number of patients) and command structure.  
*Ex: "Communications, I have a Red priority patient, unconscious, struck by a falling tree. Requesting air ambulance to Forest Road 1 at (Lat./Long.) This will be the Division W Medical, POC is TFLD Jones. EMT Smith is providing medical care."*

Severity of Emergency AND Transport Priority (Priority 1, 2, 3)	<input type="checkbox"/> <b>RED / PRIORITY 1 Life or limb threatening injury or illness. Evacuation need is IMMEDIATE</b> <i>Ex: Unconscious, difficulty breathing, bleeding severely, 2<sup>o</sup> - 3<sup>o</sup> burns more than 4 palm sizes, heat stroke, disoriented.</i>  <input type="checkbox"/> <b>YELLOW / PRIORITY 2 Serious Injury or illness. Evacuation may be DELAYED if necessary.</b> <i>Ex: Significant trauma, unable to walk, 2<sup>o</sup> - 3<sup>o</sup> burns not more than 1-3 palm sizes.</i>  <input type="checkbox"/> <b>GREEN / PRIORITY 3 Minor Injury or illness. Non-Emergency transport</b> <i>Ex: Sprains, strains, minor heat-related illness.</i>
Nature of Injury or Illness & Mechanism of Injury	Brief Summary of Injury or Illness <i>(Ex: Unconscious, Struck by Falling Tree)</i>
Transport Request	Air Ambulance / Short Haul/Hoist Ground Ambulance / Other
Patient Location	Descriptive Location & Lat. / Long. (WGS84)
Incident Name	Geographic Name + "Medical" <i>(Ex: Trout Meadow Medical)</i>
On-Scene Point of Contact	Name of on-scene POC of Incident within an Incident <i>(Ex: TFLD Jones)</i>
Crew Patient Care	Name of Care Provider <i>(Ex: EMT Smith)</i>

**3. INITIAL PATIENT ASSESSMENT:** Complete this section for each patient as applicable (start with the most severe patient)

Patient Assessment:      Age:      Weight:      Chief Complaint:

(IRPG PAGE 106)

Skin Signs: (color/moisture/temp)      Level of Consciousness:      BP:      HR:      Respirations:

Treatment:

**4. TRANSPORT PLAN:**

Evacuation Location (*drop point, intersection, hellspot, Lat. / Long, hazards*)      Patient's ETA to Location:

**5. ADDITIONAL RESOURCES / EQUIPMENT NEEDS:**

*Paramedic / EMT - Crews - Immobilization Devices - AED - Oxygen - Trauma Bag - IV/Fluid(s) - Splints - Rope rescue - Wheeled litter - HAZMAT - Extrication*

**6. COMMUNICATIONS: Identify State Air/Ground EMS Frequencies and Hospital Contacts as applicable**

Function	Channel Name/Number	Receive (RX)	Tone/NAC *	Transmit (TX)	Tone/NAC *
COMMAND					
AIR-TO-GRND					
TACTICAL					

**7. CONTINGENCY: Considerations:** If primary options fail, what actions can be implemented in conjunction with primary evacuation method?  
*Be thinking ahead.*

**8. ADDITIONAL INFORMATION:** *Updates/Changes, etc.*

**REMEMBER:** Confirm ETA's of resources ordered. Act according to your level of training  
 Be Alert - Keep Calm - Think Clearly - Act Decisively

\*\*\* Follow up with MEDL upon return to ICP \*\*\*

**UNIT LOG (ICS 214)**

<b>1. Incident Name:</b> BASIN INCIDENT	<b>2. Operational Period:</b> Date From: 7/9/24   Date To: 7/10/24 Time From: 0700   Time To: 0700
--	--

<b>3. Unit Name/Designators</b>	<b>4. Unit Leader (Name and ICS Position)</b>

<b>5. Personnel Assigned/Designators</b>		
NAME	ICS POSITION	HOME BASE

<b>6. Activity Log (Continue on Reverse)</b>	
TIME	MAJOR EVENTS

<b>7. Prepared By:</b> _____	<b>Date/Time:</b> _____
------------------------------	-------------------------

