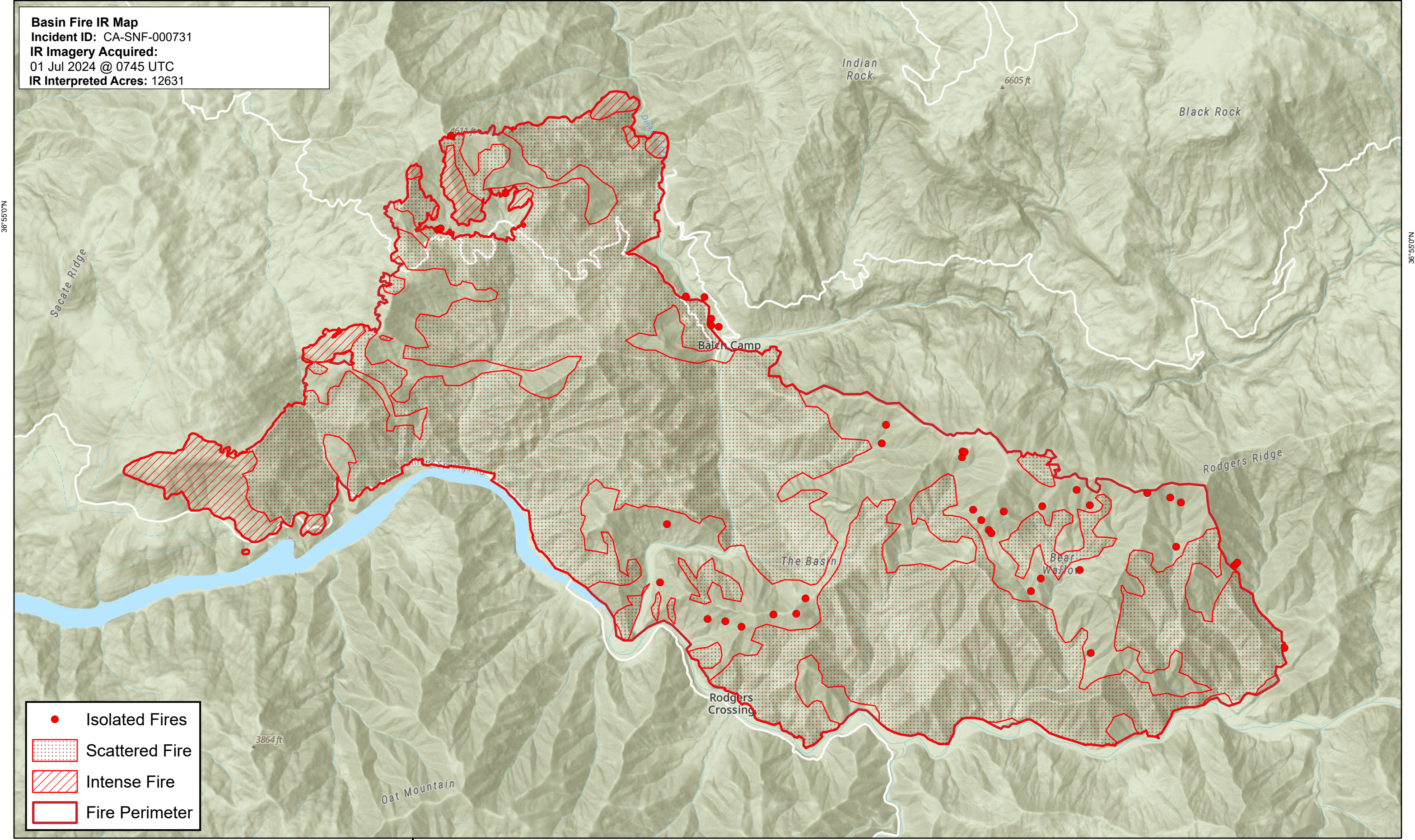


119°10'0"W





119°5'0"W

Basin Fire IR Map
Incident ID: CA-SNF-000731
IR Imagery Acquired:
01 Jul 2024 @ 0745 UTC
IR Interpreted Acres: 12631



36°55'0"N

36°55'0"N

-  Isolated Fires
-  Scattered Fire
-  Intense Fire
-  Fire Perimeter

3864 ft

6605 ft

119°10'0"W

119°5'0"W

