

INCIDENT ACTION PLAN

2024 SQF LIGHTNING

CA- SQF-001247 P5R3DR

Sunday



OPERATIONAL PERIOD

8/4/2024 0700

to

8/5/2024 0700

Approved by Incident Commander
Michael Burke

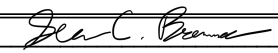
A handwritten signature in black ink.

IAP and Maps



(This Page Intentionally Left Blank)

ORGANIZATION ASSIGNMENT LIST (ICS 203)

1. Incident Name: 2024 SQF LIGHTNING		2. Operational Period: Date From: 8/4/2024 Time From: 0700		Date To: 8/5/2024 Time To: 0700	
3. Incident Commander(s) and Command Staff:			7. Operation Section:		
IC/UC's	Michael Burke	Operations	Tim Wodicka(t), Maris Gabliks		
Deputy	Steve Goldman	Deputy Operations			
Safety Officer	Dan Crowley(t), Rob Shields	Night Ops			
Information Officer	Chris Cimorelli	Staging Area			
Liaison Officer	Craig Hachemeister(t)	Division/Group	AA	Michael Lehman	LWD 8/8
4. Agency/Organization Representatives:		Division/Group	DD	Sean Gast	LWD 8/7
Agency/Organization	Name	Division/Group	PP	Bill Alleman	LWD 8/14
AA USFS	Cavan Fitzsimmons, Ted McArthur	Division/Group			
AA USFS	Tony Edwards (t)				
AA BLM	Gabe Garcia, Neil Craig (t)	Division/Group			
USFS LEO	Ty Davis	Division/Group			
Tulare County Sheriff	Josh Howser	Branch			
Tulare County Fire	Jesse Renteria	Division/Group			
Tribal Liason	William Garfield	Division/Group			
Cal OES	Javier Lara, Van Orro	Division/Group			
CCC	Chad Harris	Division/Group			
SCE	Troy Whitman	Division/Group			
CalTrans	Domenico Caminity	Division/Group			
Lead READ	Todd Ellsworth	Division/Group			
		Branch			
		Division/Group			
5. Planning Section:		Division/Group			
Chief	Sean Brennan	Division/Group			
Deputy		Division/Group			
Resource Unit	Anthony Watts	Division/Group			
Situation Unit	Fred Carlson(t), Michael Pisciotta	Branch			
ITSS	John Costello	Division/Group			
Demobilization Unit		Division/Group			
GISS	Thomas Merkel	Division/Group			
FBAN		Division/Group			
IMET	Colin McKellar	Division/Group			
Training Tech Spec	Danielle McMillon	Air Operations Branch		Director:	
Human Resources		Air Support Group Supervisor		Lee Kessler	
Check-in		Air Tactical Group Supervisor			
6. Logistics Section				Helibase Manager	
Chief	Brian Fitzpatrick				
Ordering Manager	Nathan Evans	Finance Section			
Facilities Unit	Christopher Nock	Chief	Kathleen Knuth		
Ground Support Unit	Robert Merkle III	Time Unit	Robert Ditrani		
Communications Unit	Jon Hadden	PTRC	Christopher McKeon(t), Robert Salorio(t)		
Communications Tech	Sean O'Grady	Comp/Claims Unit			
INCM	John Beck	Cost Unit	Philip Darcey		
Radio Operator	Yaanique Scott(t)				
Medical Unit	Kevin Klytta(t)				
Prepared By: Name:	Sean Brennan	Position/Title:	PSC	Signature: 	
ICS 203		Date/Time:	8/3/2024 2300 hours	NIMS IAP	



Fire Weather Forecast



FORECAST NO: 19
PREDICTION FOR: August 4, 2024
DATE: August 3th, 2024
FORECAST ISSUED: 1800 August 3rd, 2024

Fire: SQF Lightning Fire
UNIT: CA-SQF-001247
IMET: Colin McKellar
Signed: *Colin McKellar*

WEATHER DISCUSSION:

A ridge of high pressure over the region will increase temperatures around 1-3 degrees for Sunday. Winds will be terrain driven in the morning, followed by west/southwest winds in the afternoon, to west/northwest in the evening. Relative humidity will decrease today, along with poor overnight recoveries.

TODAY:

WEATHER: Sunny in the morning, becoming partly cloudy in the afternoon. Dry and Warmer
MAX TEMP AT 7000 FT: 74-82° **MIN RH: 18-24%**

20 FOOT WINDS:

Terrain-driven down slope 4-8 becoming west/southwest 8-12/G22 mph after 1400.

TRANSPORT WIND:

West 10-15 mph

CHANCE OF WETTING RAIN: 0%

INVERSION: None

TONIGHT:

WEATHER: Partly cloudy.
MIN TEMP AT 7000 FT: 59-64° **MAX RH: 25-30%**

20 FOOT WINDS:

West/Northwest 5-10 mph/G 16 mph, becoming terrain-driven downslope 4-8 mph after 0200.

TRANSPORT WIND:

NW 8-12 mph.

CHANCE OF WETTING RAIN: 0%

Inversion: None

MONDAY OUTLOOK:

WEATHER: Partly cloudy
MAX TEMP AT 5000 FT: 77-84° **MIN RH: 17-24%**

20 FOOT WINDS:

Terrain-driven down slope 4-8 becoming west/southwest 8-12/G22 mph after 1400.

TRANSPORT WIND:

West 10-15 mph.

CHANCE OF WETTING RAIN: 0%

FIRE BEHAVIOR FORECAST

FORECAST NUMBER: 20A	TYPE OF FIRE: Wildfire
FIRE NAME: SQF Lightning – Trout and Long	OPERATIONAL PERIOD: August 4, 2024
DATE ISSUED: August 3, 2024	TIME ISSUED: 1900 hours.
UNIT: CA-SQF-001362	SIGNED: Dan Felix FBAN /s/ Daniel J. Felix

WEATHER SUMMARY

- Sunny in the morning, partly cloudy in the afternoon. Dry and warmer
- Max temps: 74-82°. Nighttime min temps: 59-64°.
- Min RH: 18-24%. Nighttime max RH: 25-30%.
- Winds-slope/valley: Terrain 4-8mph becoming W/SW 8-12mph G22mph.
Nighttime: N/NW 5-10mph G16mph becoming terrain driven downslope 4-8mph after 0200.

FIRE BEHAVIOR

GENERAL:

Fire behavior. Conditions remain conducive for active fire behavior in any areas where slope, wind and solar heating align. Any unlined areas will continue to spread, areas with a grass component will produce more rapid rates of spread. Areas that have moved into timber understory will experience reduced spread rates but will produce higher intensity fire.

Fuels are approaching critically dry levels. Live fuel moistures, 1000 hr. and other dead fuels are at critical levels. Fuels include grass, grass with shrubs, shrubs, and timber with litter and understory. The timber litter and down and dead fuels are the major driver of spread, areas with little grass require high winds for rapid rates of spread.

Topography. The fires are burning in *steep, rugged terrain* characterized by deep v-notch drainages, prominent ridges, and meadows. The Trout and Long are burning in So. Fork Kern River tributaries. Elevation ranges on these two fires are between 7000-9500', and slopes range from 10-100%. All three fires have all aspects represented.

SPECIFIC FIRE BEHAVIOR:

Trout: Any interior pockets that are still active will maintain the risk of short-range spotting. Today's warming and drying will quickly dry out the fuels and previous moisture levels will be realized.

DIV AA: The fire approaching the indirect handline is expected to continue to spread, but at a slow rate. The fuels are relatively continuous in this division and will offer more resistance to control. Modeling indicates that you could experience moderate rates of spread under high winds once the fuels dry out.

DIV DD: The remaining area of concern is from around H-32 to the west, where the remaining heat is concentrated. Fuels are much more discontinuous in most of this division so organized spread is not expected if spotting occurs. The 1000 hr. fuels and the timber litter are the fuels that are receptive to spotting and will promote further spotting as they ignite standing trees.

Long: No problems are anticipated.

AIR OPERATIONS

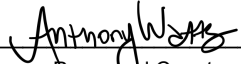
No limitations are anticipated unless thunderstorms occur.

SAFETY

The weather is getting hotter and drier... keep a heads up to how this is going to affect the fuels and fire behavior on your particular piece of dirt.

ASSIGNMENT LIST (ICS 204 WF)

CONTROLLED UNCLASSIFIED
INFORMATION//BASIC

1. Incident Name:		2. Operational Period:				3. Branch		Division	
2024 SQF LIGHTNING		Date From: 08/04/24		Date To: 08/05/24		AA		Alpha-Alpha	
		Time From: 0700		Time To: 0700					
4. Operations Personnel:						Page 1 of 1			
Operations Section Chief: Tim Wodicka(t), Maris Gabliks					Night Ops:				
Branch Director:					Branch Safety:				
Division/Group Supervisor: Michael Lehman LWD 8/8					Air Attack:				
5. Resources Assigned:									
Resource Identifier	ALS	LWD	Leader	Personnel	Request #	Hours	Reporting Location		
DIVS(t) ROGERS		8/14	PAUL ROGERS	1	O-360.3	0700-1900	TROY MEADOWS		
DIVS(t) GUERIN		8/14	KEN GUERIN	1	O-360.21	0700-1900	TROY MEADOWS		
TFLD WARE		8/14	MIKE WARE	1	O-360.4	0700-1900	TROY MEADOWS		
CR2I SCORPIONS 2		8/15	ROGER CEBALLOS	21	C-72	0700-1900	TROY MEADOWS		
CRW2 J & SONS CONTRACTING		8/7	JUAN SIADANA	20	C-26	0700-1900	TROY MEADOWS		
CR2I COBRAS 1		8/14	MANUEL ZAVALA	20	C-73	0700-1900	TROY MEADOWS		
CR2I BEAR JAW		8/7	SHELBY ERICKSON	18	C-62	0700-1900	TROY MEADOWS		
CR2I FORT APACHE #06		8/17	JOSHUA NOSIE	20	C-61	0700-1900	TROY MEADOWS		
ENG3 KS JOX E58		8/11	ERIC BARNUM	3	E-1	0700-1900	TROY MEADOWS		
ENG3 SOUTH METRO 2279		8/10	THOMAS ROGERS	4	E-2	0700-1900	TROY MEADOWS		
ENG3 TRI CITY		8/12	SERVONDO HENRY	3	E-249	0700-1900	TROY MEADOWS		
ENG6 GAS FIRE 228		8/15	MIKE RICHMOND	3	E-228	0700-1900	TROY MEADOWS		
CHP2 PVT CECIL LOGGING 212		8/11	PAUL BLAINE	3	E-212	0700-1900	TROY MEADOWS		
CHP2 PVT CECIL LOGGING 213		8/11	EDGAR HERNANDEZ	3	E-213	0700-1900	TROY MEADOWS		
CHP2 TRACK		8/15	PHILIPS	3	E-246	0700-1900	TROY MEADOWS		
SOF2 DAVIS		8/8	STEVE DAVIS	1	O-174	0700-1900	TROY MEADOWS		
EMPF BAVERY	X	8/7	ADRIAN BAVERY	1	O-271	0700-1900	TROY MEADOWS		
EMPF HETTINGA	X	8/11	ALLE HETTINGA	1	O-64.1	0700-1900	TROY MEADOWS		
EMPF(t) DELGADO	X	8/16	STEVEN DELGADO	1	O-372	0700-1900	TROY MEADOWS		
EMTF SCHNEIDER		8/11	MACKENZIE SCHNEIDER	1	O-64.3	0700-1900	TROY MEADOWS		
EMTF SANDERS		8/4	JOSH SANDERS	1	O-144	0700-1900	TROY MEADOWS		
AMB2 AMBULANCE 1	X	8/12	DILLON NGUYEN	2	E-55	0700-1900	TROY MEADOWS		
6. Work Assignments:									
<p>Hold and mop-up Sherman Pass Road from Bald Mountain to indirect line and improve former line to Sirretta Pass.</p> <p>Backhaul excess hose and equipment. Inventory and locate accountable property.</p> <p>Chip all material along road systems that were created during suppression operation.</p> <p>All blue marked trees must be assessed for hazards and safety before engaging in operations.</p> <p>Assess areas for suppression repair work as needed.</p>									
7. Special Instructions:									
<p>Identify Drop Points and Helispot locations. Notify REAFs prior to heavy equipment use.</p> <p>All streamside pumps and associated jerry cans need to be placed in an EPA approved spill containment basin.</p> <p>Backhaul all trash to Troy Meadows. Do NOT leave trash at drop points or at portable toilet locations.</p> <p>Initial attack resources will be designated at the morning briefing.</p>									
8. Communications									
Name	Ch	Function	Rx Freq	Rx Tone	Tx Freq	Tx Tone	Mode	Notes	
NIFC C6	1	COMMAND	168.4750	(T6) 156.7	165.4000	(T6) 156.7	A	SHERMAN PEAK	
NIFC C31	4	COMMAND	167.8375	(T6) 156.7	162.1750	(T6) 156.7	A	BALD MOUNTAIN	
NIFC T4	8	TACTICAL	166.7250	0.0	166.7250	0.0	A	TROUT FIRE	
A/G TAC N	14	A/G TAC	164.6000	0.0	164.6000	0.0	A		
CALCORD	15	TACTICAL	156.0750	(T6) 156.7	156.0750	(T6) 156.7	A	MEDEVAC	
AIRGUARD	16	EMERGENCY	168.6250	0.0	168.6250	(T1) 110.9	A	EMERGENCY	
9. Prepared by: Name:		Anthony Watts			RESL				
					Signature: 				
ICS 204		Date/Time: 8/3/2024			2200		Personnel Count: 68		

NIMS IAP

CONTROLLED UNCLASSIFIED INFORMATION//BASIC

AIR OPERATIONS SUMMARY ICS-220

Incident Name and Incident Number	Sunrise	Startup	Cutoff	Sunset	Time Prepared	Date Prepared	Prepared By
2024 SQF LIGHTNING / BOREL	0604	0634	1925	1955	1800	Saturday, August 3, 2024	Daniel Diaz / Lee Kessler
General Remarks, Safety Notes, Hazards, Air Operations Special Equipment, etc.	TRACK ALL DIPSITE LOCATIONS / NUMBER OF DIPS / GALLONS TAKEN. TRACK ALL DROP LOCATIONS / NUMBER OF DROPS / GALLONS DROPPED R2508 Complex Caution Military Route/Deconflict On Air Guard AVOID Aerial Application of Retardant / Foam / Agent within 300' of Waterways, Bodies of Water, etc. If Retardant / Foam / Agent is Dropped Within These Areas Immediately Notify the AOB/D and Provide the Following Information: Lat / Long, Estimated Number of Gallons and a Map Detailing The Area. Separate costs by file.						
All GPS DATA TO BE COLLECTED IN DEGREES, MINUTES, DECIMAL MINUTES FORMAT. H-407 ALS, Hoist and NVG Capable							
SQF Lightning Frequencies	RX	Tone	TX	Tone	AM / FM	BOREL Frequencies	TX
AIR TACTICS Primary	172.5500		172.5500		FM	AIR TACTICS Primary	162.3875
AIR / AIR TFR	124.4250		124.4250		AM	AIR / AIR TFR	133.5250
AIR / AIR ROTOR	134.4250		134.4250		AM	AIR / AIR ROTOR	120.9750
AIR / GROUND COMMAND	172.4375		172.4375		FM	AIR / AIR ROTOR BRIEF	128.6750
AIR / GROUND TACTICAL	164.6000		164.6000		FM	AIR / GROUND COMMAND	169.7625
					FM	AIR / GROUND TACTICAL	165.4375
COMMAND	See Com Plan		See Com Plan		FM	Position	Name
HELIBASE DECK	163.1000	156.7 (6)	163.1000	156.7 (6)	FM	AOBD	Phone
CALCORD - MEDICAL	156.0750	156.7 (6)	156.0750	156.7 (6)	FM	ASGS	John Steadman
AIR GUARD - Emergency Only	168.6250	110.9 (1)	168.6250	110.9 (1)	FM	HEBM	Geoffrey Gillespie (Kernville)
					FM	HEBM	Cindy Bradley (Shafter)
						ATGS	On Order
						ASGS(T)	Lee Kessler (Trout)
HELICOPTERS							
FAA #	Type	Make/Model	Helibase	Start	Avail	Remarks / A - #	Rescue Ship Information
HT-115	1	HH-60L	Shafter	0700	0800	LL Bucket	Day
HB-83BH	1	EH-60A	Shafter	0700	0800	LL Bucket	H-407
HB-0FS	1	UH-60A	Shafter	0700	0800	LL Bucket	661-282-7030 (24HR)
HT-0HX	1	S-64	Shafter	0700	0800	Tank	UH1H
HT-7RA	1	CH-47	Shafter	0700	0800	Tank	Location
HT-2HT	1	CH-54A	Shafter	0700	0800	Tank	Kernville
HB-947CH	1	CH-47D	Shafter	0700	0800	Tank	Request Procedure for These Aircraft:
							See Medical Plan For Additional Info
H-530 (534HQ)	2	Bell 205 A1++	Kernville	0700	0800	Bucket	Note:
H-534 (N56TA)	2	Bell 205 A1++	Kernville	0700	0800	Bucket	
H-522 (N99WL)	2	Bell 205 A1++	Kernville	0700	0800	Bucket	
H-523 (N262HQ)	2	Bell 205 A1++	Kernville	0700	0800	Bucket	
H-538 (N380PL)	2	Bell 205 A1++	Kernville	0700	0800	Bucket	
H-535 (N911FS)	3	Bell 407	Shafter	0700	0800	Bucket	
H-554 (N44HX)	3	Bell 407	Kernville	0700	0800	Bucket	
H-509 (N41HX)	3	Bell 407	Shafter	0700	0800	HICO	
							UAS
							Make/Model
							Alta X
							Operator
							R.Ordonez
							Shift
							Day
							Avail
							0800
Helibase Name:		Kernville					Helibase Name:
Latitude:		35 43.69					Porterville
Longitude:		118 25.18					Latitude:
							36 01.77
							Longitude:
							119 03.76

*** COMMUNICATIONS MESSAGE ***

*** 8/4/24 Operational Period ***

As of today, August 4th, we will be transferring all Radio Operations from “Lightning Communications” to “Trout Communications”

“Trout Communications” Will be Monitoring the Radio System 24 Hours a Day

Please take note that **ALL** Air Operations are still being handled in and by Borel.

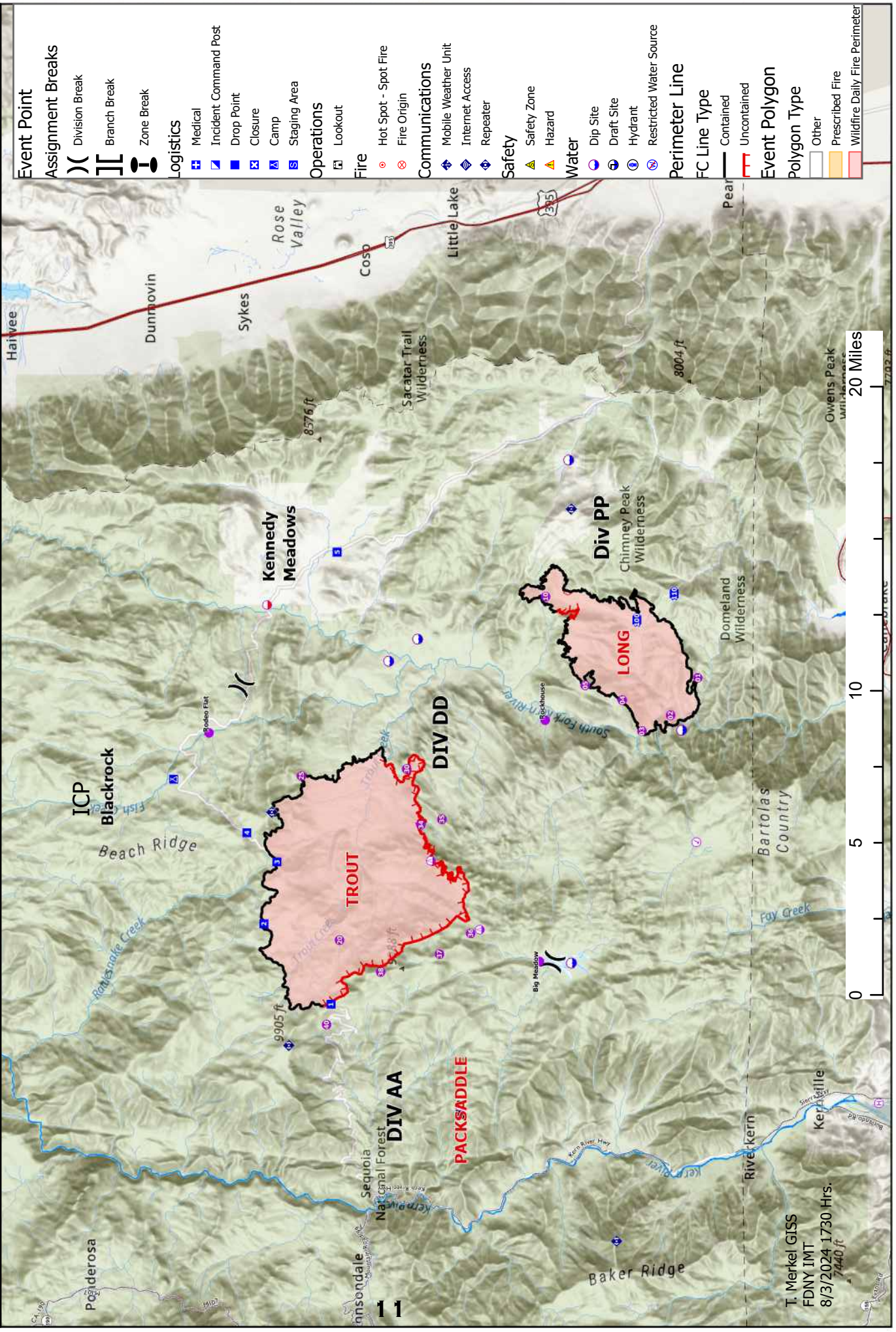
There is No New Clone Today

ICS 205 - INCIDENT RADIO COMMUNICATIONS PLAN										CONTROLLED UNCLASSIFIED INFORMATION//BASIC	
1. Incident Name:		2. Date/Time Prepared		3. Operational Period:							
2024 SQF LIGHTNING		08/03/2024 1358		Date From:	08/04/24	Date To:	08/05/24	Time From:	0700	Time To:	0700
4. Communications											
Ch#	Function	Name	Assigned To	Rx Freq	Rx Tone	Tx Freq	Tx Tone	Mode	Notes		
1	COMMAND	NIFC C6	ALL DIVS	168.475	(T6) 156.7	165.4	(T6) 156.7	A	SHERMAN PEAK		
2		NOT IN USE	NOT IN USE								
3	COMMAND	NIFC C23	ALL DIVS	173.025	(T6) 156.7	162.1875	(T6) 156.7	A	CHIMNEY PEAK		
4	COMMAND	NIFC C31	ALL DIVS	167.8375	(T6) 156.7	162.175	(T6) 156.7	A	BALD MOUNTAIN		
5	TACTICAL	NIFC T1	DIV DD	168.05	0	168.05	0	A	TROUT FIRE		
6	TACTICAL	NIFC T2	UNASSIGNED	168.2	0	168.2	0	A			
7	TACTICAL	NIFC T3	DIV PP	168.6	0	168.6	0	A	LONG FIRE		
8	TACTICAL	NIFC T4	DIV AA	166.725	0	166.725	0	A	TROUT FIRE		
9	TACTICAL	NIFC T5	UNASSIGNED	166.775	0	166.775	0	A			
10	TACTICAL	NIFC T6	UNASSIGNED	168.25	0	168.25	0	A			
11	COMMAND	CND 4	IA COMMAND	169.775	0	163.025	OST	A	T3 - Mule, T4 - Baker, T6 - Piute		
12	TACTICAL	R5 T4	IA TAC	166.55	0	166.55	0	A			
13	A/G CMD	A/G CMD N	ALL DIVS	172.4375	0	172.4375	0	A			
14	A/G TAC	A/G TAC N	ALL DIVS	164.6	0	164.6	0	A			
15	TACTICAL	CALCORD	ALL DIVS	156.075	(T6) 156.7	156.075	(T6) 156.7	A	MEDEVAC		
16	EMERGENCY	AIRGUARD	ALL DIVS	168.625	0	168.625	(T1) 110.9	A	EMERGENCY		
17											
18											
19											
20	EMERGENCY	AIRGUARD	ALL DIVS	168.625	0	168.625	(T1) 110.9	A	EMERGENCY		
5. Special Instructions											
6. Prepared by (Communications Unit Leader): Name: Jon Hadden 718-679-5296 Signature: DS: Jonathan M. Hadden											
ICS 205 - CONTROLLED UNCLASSIFIED INFORMATION//BASIC											
										Date/Time:	08/03/2024 1358

IAP Map Operational Period 8/4/2024 0700 - 8/5/2024 0700

SQF Lightning
CA-SQF-00124

Approx. 32,643 Acres
8/3/2024 1730 Hrs.
NAD 1983 UTM Zone 11N
Reference Scale: 1:100,000



MEDICAL PLAN ICS 206	1. INCIDENT NAME SQF Lighting Complex	2. DATE PREPARED 08/03/2024	3. TIME PREPARED 1600	4. OPERATIONAL PERIOD 8/04/2024 0700 to 8/05/2024 0700				
5. INCIDENT MEDICAL AID STATIONS								
MEDICAL AID STATIONS		LOCATION			PARAMEDICS			
					YES	NO		
ICP		Black Rock Ranger Station				X		
Troy Meadows Camp		Troy Meadows Campground-Medical/Supply Tent			EMT			
6. TRANSPORTATION								
A. AIR AMBULANCES								
NAME		LOCATION		PHONE		PARAMEDICS		
						YES	NO	
Kern 407 (Day and Night Hoist)		Kernville Helibase		Trout Communications		X		
Local 911 System		Porterville & Fresno		Porterville		X		
T-CAD Tulare County Medivac		Porterville/Visalia		559-687-3050		X		
B. GROUND AMBULANCES & REM TEAMS								
NAME		LOCATION			PARAMEDICS			
					YES	NO		
Ambulance 1		DP-1			X			
Local 911 System-Kern County		Kernville & Lake Isabella (West Side)			X			
Local 911 System-Tulare County		Kennedy Meadows (East Side)				X		
Local 911 System-Tulare County		Inyo-Kern (East Side)			X			
7. HOSPITALS								
NAME	ADDRESS		TRAVEL TIME		PHONE	Trauma Center	Burn Center	Helipad
	Lat & Long Helipad							
Kern Valley Healthcare District	6412 Laurel Ave, Lake Isabella, CA 93420 Lat/Long: 35.6351365, -118.4073602		00:20	02:20	760-379-2681			X
Kern Medical Center	1700 Mount Vernon Ave. Bakersfield, CA 93306 Lat/Long: 35.33829347, -118.9705331		00:40	03:45	661-326-2000	Level 2		X
Bakersfield Memorial Hospital	420 34 th St. Bakersfield, CA 93301 Lat/Long: 35.3909088, -119.0060445		00:40	03:39	661-327-4647		X	X
Ridgecrest Regional Hospital	1081th North China Lake Blvd, Ridgecrest, CA 93555 Lat/Long: 35.64086, -117.671187		00:30	01:33	760-446-3551	Level 4		X
8. MEDICAL EMERGENCY PROCEDURES								
<p><u>LINE "MEDICAL-EMERGENCY" PLAN:</u></p> <p>- Reporting Party to contact Communications with:</p> <ul style="list-style-type: none"> • Patient Complaint, Condition and Location via Tactical or Command frequency. • Red, Yellow & Green Patients triggers Incident within Incident (IWI) • The highest qualified responder will run "Medical-Emergency" on the assigned frequency assuming the role of IWI IC. • IWI IC will use "Medical Incident Report" worksheet on back of this page or in IRPG. • Communications contacts Medical Unit Leader on the assigned frequency or cell phone (list number). <p>IN-CAMP – 24 HOUR MEDICAL</p> <ul style="list-style-type: none"> • Contact incident Communications with: Patient Complaint, Condition and Location via LOGS net or assigned frequency. 								
ICS 206 6/2017		9. PREPARED BY: (Medical Unit Leader) MEDL Kevin Klytta – MEDL (t) <i>Kevin Klytta</i>			10. REVIEWED BY: (Safety Officer) Daniel Crowley – SOFR (t)			

Incident: 2024 SQF Lightning	Date: August 4, 2024 – August 5, 2024	Operational Period: 0700 - 0700
--	---	---



SAFETY MESSAGE

SAFETY IS OUR FIRST PRIORITY










Fire fighter safety comes first on every fire, every time

SAFETY THOUGHT
 “Listen for the Alarm”. Watch for changing conditions.
 Be aware of “watch out” situations. Be alert to indicators of fire behavior.

MAJOR HAZARDS AND RISKS

<ul style="list-style-type: none"> • Complacency/Boredom • Civilian vehicles/onlookers • Hazard Trees • Cumulative Fatigue 	<ul style="list-style-type: none"> • Vehicle Operations • Air Operations • Make sure to have proper PPE; WEAR IT • Fire Access—go slow
--	---

TACTICAL WATCHOUTS	HAZARD CONTROL
Vehicle Operations 	Pull off roads to allow traffic to pass, watch for soft shoulders, keep speed down, headlights on , use a spotter when parking, use chock blocks.
Chain Saw Operations 	Use chain guards when transporting saws, DO NOT drop start saws! Only employees who are trained and certified should operate chain saws under any conditions. No employee shall approach a felling operation closer than 3 tree lengths of the tree being felled. Use swampers, watch spacing, wear PPE.
Air Operations 	Use clear text communication and identify ground contact with pilot. Stay heads up with helicopter operations.
Slips and Falls 	Slips and falls can happen quickly and easily when walking through dense brush, uneven muddy terrain, or along slopes. Check for proper and good condition boots. They must meet the standard! Make sure you go slowly and watch your step
Equipment Operations 	Make eye contact with operator before approaching vehicle. Avoid working below equipment. Don't approach equipment from behind.
Personal Hygiene 	Wash your hands often. Wash fresh fruits and vegetables before eating. Always wash your hands before handling food. Wash hands after using the bathroom.
First Aid Prevention 	Encourage crews to seek first aid to avoid aggravating minor injuries or ailments. Seek first aid remedies for blisters, sprains, athlete's foot, coughs.

Safety Officer Daniel Crowley	Line Safety Steve Davis / Rob Shields
---	---

INCIDENT SAFETY ANALYSIS 215a

SQF Lightning / CA-SQF-001247 - Sunday, August 04, 2024

8. Location	9. Hazard	6. Control or Abatement Action (Engineering, Administrative, PPE, Avoidance, Education, etc)
All	Driving & Traffic	~ Practice "Defensive Driving" techniques traveling on all roads and city streets, mitigation strategy includes: ~ Use spotters when backing ~ Honk horn to alert personnel when backing ~ Always use headlights ~ Yield to pedestrians and bicycles ~ Observe posted speed limits ~ Follow 3 second rule of following distance when driving ~ Use chock blocks, turn wheels into hill"
All	Air Operations	~Follow "" Aviation Watch-Out Situations"" on page 52, IRPG ~Don't plan on air resources for medical transport or resupply. ~Refer to page 65, IRPG for directing bucket drops. ~Ensure positive communication with all air resources.
All	Hazard Trees	~ Follow "Hazard Tree Safety" guidelines, IRPG pages 20 & 21 ~ Post lookouts, or use a spotter in mop-up areas with personnel ~ Don't park vehicles or take breaks in high concentrations of hazard trees ~ Establish trigger points for disengagement during high wind events
All	Injury & Medical Emergency	~ Assist injured employee appropriate medical care ~ Use EMT's on Division for initial care ~ Follow medical protocol as outlined in ICS-206
All	Steep Terrain & Rolling Debris	~ Maintain 8'-10' spacing when working & walking ~ Don't work above any personnel ~ Evaluate necessity to send personnel in areas with limited access
All	Severe Weather	~ Review and follow Thunderstorm Safety guidelines in IRPG page 17 ~ Observe 30/30 Rule for lightning safety.....page 19, IRPG ~ Establish "Trigger Points" to withdraw, and ensure all know rally site ~ Use "Risk Management" process to determine retreat criteria and actions ~ Carry rain gear and extra food and water if weather limits retreat to ICP
All	Extreme Fire Behavior	~ Share weather observations with all personnel assigned to division Complete JHA and have operator(s) sign. ~ Establish "Trigger Points" to withdraw ~ Use "Risk Management" process prior to engaging in suppression actions, refer to page 1, IRPG
All	Heat Related Illness (HRI)& Dehydration	~Drink Fluids throughout operational period ~Carry extra water on line and cache water at drop points ~Take Frequent breaks, minimum of 10 minutes every hour ~Recognize symptoms of HEAT RELATED ILLNESS which include <ul style="list-style-type: none"> o Lack of energy o Headaches, dizziness o Lack of rest o No hunger, poor eating habits o Hot skin, and lack of sweating"
All	Chipper Operations	~ Complete JHA and have operator(s) sign. ~ Only qualified personnel to operate/feed the chipper ~ Wear proper PPE

INCIDENT SAFETY ANALYSIS 215a

All	Structure Protection & HAZMAT	<ul style="list-style-type: none"> ~ Review "Wildland Urban Interface" Watch outs, IRPG page 10 ~ Use "Structure Assessment" checklist, IRPG pages 11-14 ~ Follow "HAZMAT Incident Operations" on pages 32-37 in IRPG
All	Mop-up& Rehab	<ul style="list-style-type: none"> ~ Do not work above or below personnel during rehab/mop-up operations ~ Alert crew personnel of rolling debris by yelling to affected individuals ~ Position debris that could roll vertically on slope ~ Wear eye protection
All	ATV/UTV use	<ul style="list-style-type: none"> ~Ensure equipment is inspected and safe to use. ~Ensure operator is trained and certified to operate. ~Ensure operator has proper PPE. ~Question if it is mission critical.
All	Wildlife & Livestock	<ul style="list-style-type: none"> ~ Watch out for wildlife & livestock inside fire area and along roadways. ~ Clean up all debris and trash during each operational period
All	Mines	<ul style="list-style-type: none"> ~ Identify and avoid mining areas ~ Notify others of hazard

Logistics Message:

Caterer: Grumpy Bear

Located at: Troy Meadows Camp

Hours: Breakfast 0600-0900

Dinner 1800-2100

Shower Trailer:

Located at: Troy Meadows Camp

Hours: 0730-1200 and 1400-2200

Laundry Services:

Located at: Blackrock ICP

Hours: 0730-1830

All Backhaul is to be dropped off at Blackrock ICP, follow signs past the fuel tanker.

PUBLIC INFORMATION

Fire Information Line: (917) 921-5226 (8:00 a.m. to 8:00 p.m.)

Media Inquiries: (917) 921-5226 (8:00 a.m. to 8:00 p.m.)

2024.lightning@firenet.gov

For the latest fire information: <https://tinyurl.com/5n8v4jcv> (inciweb)

We would appreciate photos or video from the field: fire activity, people at work, etc. Please Email content to 2024.lightning@firenet.gov and include the location, date taken, involved crew, and photo credit. If the photo has people working, please make sure they are in full PPE.

Any inquiries concerning the Borel Fire can be directed to the California Interagency Incident Management Team 11 (CAIIMT11) fire information number: 559-481-7849.

Finance Message

CTRs, Shift Tickets, and Supporting Documentation

- Please submit all documentation electronically via the Finance e-mail:
2024.Lightning.Finance@firenet.gov
- Include your resource number and the name of the fire you are working on.
- Write legibly and print your name below your signature.

Contractors

- Documents you need to send to Finance
 - RO
 - Contract/Agreement
 - Pre and Post Inspection
 - CTRs and/or STs
 - Evaluations
 - Supporting Documentation

Equipment Notes

- Write your Resource Number on the top right of your Shift Ticket
- In remarks box:
 - Record all Mileage or Transport Retained
 - Record any down time
- Interim payments are available at Finance upon request after 14 days of work

Contract Crew Notes

- Crew Boss time starts at briefing; all other crew members begin 30 minutes later.
- Show meal breaks
- Time ends upon return to ICP or Spike Camp

Fire Replacement

- Cache Items
 - Surrender and Replace at Supply for equivalent
- Non-Cache Items
 - Submit OF289 and GM213 to Finance
- Federal IT Equipment, including radios
 - Replacement occurs through your regional radio manager and CIO

Local Government Resources

- OES Support contact 2024.Borel.Finance@firenet.gov
- CAL Fire Support contact jack.franklin@fire.ca.gov

Trainees: There is much the (On Site) Incident Training Specialist can do to help make your assignment as productive as possible. Register your assignment with the TNSP to take advantage of the available services.

Access the Incident Training Page by scanning the QR Code on the IAP Cover Page and select the “Training check in” link.

There is also a check out link that will allow you to start the check out process. Avoid creating a delay when it’s time for you to Demob. On that link there is the Trainee exit interview to complete on your trainer.

Danielle McMillon, TNSP 213.760.1559 or email danielle.mcmillon@fire.lacounty.gov

Or go here for all forms <https://linktr.ee/dani.mcmillon>

08/04/2024

TENTATIVE RELEASE

2024 SQF LIGHTNING US-CA-SQF-001247

DEMOB INSTRUCTIONS:

Begin by speaking to the Resources unit in the Planning yurt to start the process and receive the ICS 221 Check-Out form. Based on your resource type and if any equipment was issued (Radios, Supply, etc.) it must be returned and you are to receive a signature from the corresponding section. If your vehicle requires an inspection, visit ground support and collect a signature if the inspection is satisfactory with no action needed. Next you are to visit the Finance section and ensure all of your documents have been submitted and recorded to their satisfaction. The final stop will be returning to the Planning yurt (Resources Unit) to turn in your ICS 221 and be final DEMOBED.

Resource ID:	Resource Name:	Last Work Day:
O-144	EMTF SANDERS	8/4/2024

MEDICAL PLAN (ICS 206 WF)

Controlled Unclassified Information//Basic

Medical Incident Report

FOR A NON-EMERGENCY INCIDENT, WORK THROUGH CHAIN OF COMMAND TO REPORT AND TRANSPORT INJURED PERSONNEL AS NECESSARY.

FOR A MEDICAL EMERGENCY: IDENTIFY ON-SCENE INCIDENT COMMANDER BY NAME AND POSITION AND ANNOUNCE "MEDICAL EMERGENCY" TO INITIATE RESPONSE FROM IMT COMMUNICATIONS/DISPATCH.

Use the following items to communicate situation to communications / dispatch.

1. CONTACT COMMUNICATIONS / DISPATCH (**Verify correct frequency prior to starting report**)

Ex: "Communications, Div. Alpha. Stand-by for Emergency Traffic."

2. INCIDENT STATUS: Provide incident summary (including number of patients) and command structure.

Ex: "Communications, I have a Red priority patient, unconscious, struck by a falling tree. Requesting air ambulance to Forest Road 1 at (Lat./Long.) This will be the Trout Meadow Medical, IC is TFLD Jones. EMT Smith is providing medical care."

Severity of Emergency / Transport Priority	<input type="checkbox"/> RED / PRIORITY 1 Life or limb threatening injury or illness. Evacuation need is IMMEDIATE <i>Ex: Unconscious, difficulty breathing, bleeding severely, 2° – 3° burns more than 4 palm sizes, heat stroke, disoriented.</i> <input type="checkbox"/> YELLOW / PRIORITY 2 Serious Injury or illness. Evacuation may be DELAYED if necessary. <i>Ex: Significant trauma, unable to walk, 2° – 3° burns not more than 1-3 palm sizes.</i> <input type="checkbox"/> GREEN / PRIORITY 3 Minor Injury or illness. Non-Emergency transport <i>Ex: Sprains, strains, minor heat-related illness.</i>
Nature of Injury or Illness & Mechanism of Injury	Brief Summary of Injury or Illness (Ex: Unconscious, Struck by Falling Tree)
Evacuation Request	Air Ambulance / Short Haul/Hoist Ground Ambulance / Other
Patient Location	Descriptive Location & Lat. / Long. (WGS84)
Incident Name	Geographic Name + Medical (Ex: Trout Meadow Medical)
On-Scene Incident Commander	Name of on-scene IC of Incident within an Incident (Ex: TFLD Jones)
Patient Care	Name of Care Provider (Ex: EMT Smith)

3. INITIAL PATIENT ASSESSMENT: Complete this section for each patient as applicable (start with the most severe patient)

Patient Assessment: See IRPG PAGE 106

Treatment:

4. EVACUATION PLAN:

Evacuation Location (if different): (Descriptive Location (drop point, intersection, etc.) or Lat. / Long.) Patient's ETA to Evacuation Location:

Helispot / Extraction Site Size and Hazards:

5. ADDITIONAL RESOURCES / EQUIPMENT NEEDS:

Example: Paramedic/EMT, crews, immobilization devices, AED, oxygen, trauma bag, IV/fluid(s), splints, rope rescue, wheeled litter, HAZMAT, extrication

6. COMMUNICATIONS: Identify State Air/Ground EMS Frequencies and Hospital Contacts as applicable

Function	Channel Name/Number	Receive (RX)	Tone/NAC *	Transmit (TX)	Tone/NAC *
COMMAND					
AIR-TO-GRND					
TACTICAL					

7. CONTINGENCY: **Considerations:** If primary options fail, what actions can be implemented in conjunction with primary evacuation method? Be thinking ahead..

8. ADDITIONAL INFORMATION: Updates/Changes, etc.

REMEMBER: Confirm ETAs of resources ordered. Act according to your level of training. Be Alert. Keep Calm. Think Clearly. Act Decisively.