

INCIDENT ACTION PLAN

2024 SQF LIGHTNING

CA- SQF-001247 P5R3DR

Tuesday



OPERATIONAL PERIOD

8/6/2024 0700

to

8/7/2024 0700

Approved by Incident Commander
Michael Burke


A handwritten signature in black ink, appearing to be 'Michael Burke'.

IAP and Maps



(This Page Intentionally Left Blank)

ORGANIZATION ASSIGNMENT LIST (ICS 203)

1. Incident Name: 2024 SQF LIGHTNING		2. Operational Period: Date From: 8/6/2024 Time From: 0700		Date To: 8/7/2024 Time To: 0700	
3. Incident Commander(s) and Command Staff:			7. Operation Section:		
IC/UC's	Michael Burke	Operations	Tim Wodicka(t), Maris Gabliks		
Deputy	Steve Goldman	Deputy Operations			
Safety Officer	Rob Shields, Dan Crowley (t)	Night Ops			
Information Officer	Chris Cimorelli	Staging Area			
Liaison Officer	Craig Hachemeister(t)	Division/Group	AA	Michael Lehman	LWD 8/8
4. Agency/Organization Representatives:		Division/Group	DD	Sean Gast	LWD 8/7
Agency/Organization	Name	Division/Group	PP	Bill Alleman	LWD 8/14
AA USFS	Ted McArthur	Division/Group			
AA USFS	Tony Edwards (t)				
AA BLM	Gabe Garcia, Neil Craig (t)	Division/Group			
USFS LEO	Ty Davis	Division/Group			
Tulare County Sheriff	Josh Howser	Branch			
Tulare County Fire	Jesse Renteria	Division/Group			
Tribal Liason	William Garfield	Division/Group			
Cal OES	Javier Lara, Van Orro	Division/Group			
CCC	Chad Harris	Division/Group			
SCE	Troy Whitman	Division/Group			
CalTrans	Domenico Caminity	Division/Group			
Lead READ	Todd Ellsworth	Division/Group			
		Branch			
		Division/Group			
5. Planning Section:		Division/Group			
Chief	Sean Brennan, Anthony Watts (t)	Division/Group			
Deputy		Division/Group			
Resource Unit		Division/Group			
Situation Unit	Michael Pisciotta, Fred Carlson (t)	Branch			
ITSS	John Costello	Division/Group			
Demobilization Unit		Division/Group			
GISS	Thomas Merkel	Division/Group			
DOCL	Lisa Spiess	Division/Group			
IMET	Colin McKellar	Division/Group			
Training Tech Spec	Danielle McMillon	Air Operations Branch		Director:	
Human Resources		Air Support Group Supervisor		Lee Kessler	
Check-in		Air Tactical Group Supervisor			
6. Logistics Section				Helibase Manager	
Chief	Brian Fitzpatrick				
Ordering Manager	Nathan Evans	Finance Section			
Facilities Unit	Christopher Nock	Chief	Robert Ditrani (t)		
Ground Support Unit	Robert Merkle III	Time Unit	Christopher McKeon(t)		
Communications Unit	Jon Hadden	PTRC	Kathleen Knuth, Robert Salorio(t)		
Communications Tech	Sean O'Grady	Comp/Claims Unit			
INCM	John Beck	Cost Unit	Philip Darcey		
Radio Operator	Dan Flynn, Yaanique Scott(t)				
Medical Unit	Kevin Klytta(t)				
Prepared By: Name:	Sean Brennan	Position/Title:	PSC	Signature:	
ICS 203		Date/Time:	8/5/2024 2300 hours		



Fire Weather Forecast



FORECAST NO: 21
PREDICTION FOR: August 6th, 2024
DATE: August 5th, 2024
FORECAST ISSUED: 1800 August 5th, 2024

Fire: SQF Lightning Fire
UNIT: CA-SQF-001247
IMET: Colin McKellar
Signed: *Colin McKellar*

WEATHER DISCUSSION:

High pressure remains over the western U.S., with continued warm temperatures and low humidities through Wednesday. Winds today will be stronger, and will stay elevated from the northwest into the early morning.

TODAY:

WEATHER: Becoming partly cloudy. Dry and Warm.
MAX TEMPERATURES: 78-85° **MIN RH:** 13-21%

20 FOOT WINDS:

Slopes/Valleys: Terrain-driven down-slope 4-9 mph, becoming west/southwest 11-16/G24 mph after 1500.
 Ridges/Exposed: South/southeast 5-10/G15 mph, becoming west/southwest 13-18/G26 mph after 1500.

TRANSPORT WIND:

Northwest 17 mph

CHANCE OF WETTING RAIN: 0%

INVERSION: None

TONIGHT:

WEATHER: Mostly clear.
MIN TEMPERATURES:
 Mid-Slopes/Ridges: 62-66° **MAX RH:** 23-29%
 Valleys/Drainages: 53-57° **MAX RH:** 34-39%

20 FOOT WINDS:

Slopes/Valleys: West/northwest 10-16/G26 mph through 0300, then northwest 4-10 mph.
 Ridges/Exposed: West/northwest 13-19/G28 mph through 0300 then northwest 6-11/G17 mph.

TRANSPORT WIND:

Northwest 12 mph.

CHANCE OF WETTING RAIN: 0%

Inversion: None

WEDNESDAY OUTLOOK:

WEATHER: Partly cloudy. Dry and warm.
MAX TEMPERATURES: 79-86° **MIN RH:** 13-20%

20 FOOT WINDS:

Slopes/Valleys: West 4-9 mph, becoming west/southwest 7-13/G22 mph after 1500.
 Ridges/Exposed: West 5-10/G15 mph, becoming west/southwest 11-16/G23 mph after 1500.

TRANSPORT WIND:

West to northwest 12 mph.

CHANCE OF WETTING RAIN: 0%

INVERSION: None

FIRE BEHAVIOR FORECAST

FORECAST NUMBER: 22A	TYPE OF FIRE: Wildfire
FIRE NAME: SQF Lightning – Trout and Long	OPERATIONAL PERIOD: August 6, 2024
DATE ISSUED: August 5, 2024	TIME ISSUED: 1900 hours.
UNIT: CA-SQF-001362	SIGNED: Dan Felix FBAN /s/ Daniel J. Felix

WEATHER SUMMARY **** See Fire Weather Forecast for details ****

- Becoming partly cloudy. Dry and Warm.
- Max temps: 78-85°.
- Min RH: 13-21%.
- Slope/Valleys: Terrain-driven down-slope 4-9 mph, then west/southwest 11-16/G24 mph after 1500.
- Ridges/Exposed: South/southeast 5-10/G15 mph, then west/southwest 13-18/G26 mph after 1500.

FIRE BEHAVIOR

GENERAL:

Fire behavior. Conditions remain conducive for active fire behavior in any areas where slope, wind and solar heating align. Any unlined areas will continue to spread, areas with a grass component will produce more rapid rates of spread. Areas that have moved into timber understory will experience reduced spread rates but will produce higher intensity fire.

Fuels are approaching critically dry levels. Live fuel moistures, 1000 hr. and other dead fuels are at critical levels. Fuels include grass, grass with shrubs, shrubs, and timber with litter and understory. The timber litter and down and dead fuels are the major driver of spread, areas with little grass require high winds for rapid rates of spread.

Topography. The fires are burning in *steep, rugged terrain* characterized by deep v-notch drainages, prominent ridges, and meadows. The Trout and Long are burning in So. Fork Kern River tributaries. Elevation ranges on these two fires are between 7000-9500', and slopes range from 10-100%. All three fires have all aspects represented.

SPECIFIC FIRE BEHAVIOR:

Trout: The warming and drying trend will continue the threat of short-range spotting if terrain winds impact areas of single and/or group tree torching. Heavy surface and ground fuels will continue to generate heat driving that possibility.

DIV AA: The fire approaching the indirect handline is expected to continue to spread, especially in the southern portion of the division. The fuels are relatively continuous in this division and will offer more resistance to control. Modeling indicates that you could experience moderate rates of spread under high winds.

DIV DD: The remaining area of concern is from around H-32 to the west, where the remaining heat is concentrated. Fuels in the majority of this division are much more discontinuous in most of this division so organized spread is not expected if spotting occurs. The 1000 hr. fuels and the timber litter are the fuels that are receptive to spotting and will promote further spotting as they ignite standing trees.

Long: No problems are anticipated.

AIR OPERATIONS

No limitations are anticipated unless thunderstorms occur.

SAFETY

There is unburned fuel between you and the fire. While the progression is slow towards the indirect line keep a heads up in that area if conditions change.

ASSIGNMENT LIST (ICS 204 WF)

CONTROLLED UNCLASSIFIED
INFORMATION//BASIC

1. Incident Name:		2. Operational Period:				3. Branch		Division	
2024 SQF LIGHTNING		Date From: 08/06/24		Date To: 08/07/24		AA		Alpha-Alpha	
		Time From: 0700		Time To: 0700					
4. Operations Personnel:									
Operations Section Chief: Tim Wodicka(t), Maris Gabliks					Night Ops:				
Branch Director:					Branch Safety:				
Division/Group Supervisor: Michael Lehman LWD 8/8					Air Attack:				
5. Resources Assigned:									
Resource Identifier	ALS	LWD	Leader	Personnel	Request #	Hours	Reporting Location		
DIVS(t) ROGERS		8/9	PAUL ROGERS	1	O-360.3	0700-1900	TROY MEADOWS		
DIVS(t) GUERIN		8/14	KEN GUERIN	1	O-360.21	0700-1900	TROY MEADOWS		
TFLD WARE		8/14	MIKE WARE	1	O-360.4	0700-1900	TROY MEADOWS		
CR2I SCORPIONS 2		8/15	ROGER CEBALLOS	21	C-72	0700-1900	TROY MEADOWS		
CRW2 J & SONS CONTRACTING		8/7	JUAN SIADANA	20	C-26	0700-1900	TROY MEADOWS		
CR2I COBRAS 1		8/14	MANUEL ZAVALA	20	C-73	0700-1900	TROY MEADOWS		
CR2I BEAR JAW		8/7	SHELBY ERICKSON	18	C-62	0700-1900	TROY MEADOWS		
CR2I FORT APACHE #06		8/17	JOSHUA NOSIE	20	C-61	0700-1900	TROY MEADOWS		
CRW2 WEST COAST REF		8/17	LUIS GONZALEZ	20	C-74	0700-1900	TROY MEADOWS		
CRW2 SCORPIONS 3		8/14	ARTURO ZAPEDA	20	C-63	0700-1900	TROY MEADOWS		
ENG3 KS JOX E58		8/11	ERIC BARNUM	3	E-1	0700-1900	TROY MEADOWS		
ENG3 SOUTH METRO 2279		8/10	THOMAS ROGERS	4	E-2	0700-1900	TROY MEADOWS		
ENG3 TRI CITY		8/12	SERVONDO HENRY	3	E-249	0700-1900	TROY MEADOWS		
ENG6 GAS FIRE 228		8/15	MIKE RICHMOND	3	E-228	0700-1900	TROY MEADOWS		
WTT2 DYNAMITE WATER		8/17	MIKE RUDOLPH	3	E-192	0700-1900	TROY MEADOWS		
CHP2 PVT CECIL LOGGING 212		8/11	PAUL BLAINE	3	E-212	0700-1900	TROY MEADOWS		
CHP2 PVT CECIL LOGGING 213		8/11	EDGAR HERNANDEZ	3	E-213	0700-1900	TROY MEADOWS		
CHP2 TRACK		8/15	PHILIPS	3	E-246	0700-1900	TROY MEADOWS		
CHP2 CTS VENTURES		8/18	WILLIAM BEARDEN	3	E-258	0700-1900	TROY MEADOWS		
SOF2 DAVIS		8/8	STEVE DAVIS	1	O-174	0700-1900	TROY MEADOWS		
EMPF BAVERY	X	8/7	ADRIAN BAVERY	1	O-271	0700-1900	TROY MEADOWS		
EMPF HETTINGA	X	8/11	ALLE HETTINGA	1	O-64.1	0700-1900	TROY MEADOWS		
EMTF SCHNEIDER		8/11	MACKENZIE SCHNEIDER	1	O-64.3	0700-1900	TROY MEADOWS		
EMTF(t) MONTES		8/16	ALONSO MONTES	1	O-386	0700-1900	TROY MEADOWS		
AMB2 AMBULANCE 1	X	8/12	DILLON NGUYEN	2	E-55	0700-1900	TROY MEADOWS		
6. Work Assignments:									
<p>Hold and mop-up Sherman Pass Road from Bald Mountain to indirect line and improve former line to Sirretta Pass.</p> <p>Backhaul excess hose and equipment. Inventory and locate accountable property.</p> <p>Chip all material along road systems that were created during suppression operation.</p> <p>All blue marked trees must be assessed for hazards and safety before engaging in operations.</p> <p>Assess areas for suppression repair work as needed.</p> <p>Conduct strategic burnout operations to secure lines as necessary.</p>									
7. Special Instructions:									
<p>Identify Drop Points and Helispot locations. Notify REAFs prior to heavy equipment use.</p> <p>All streamside pumps and associated jerry cans need to be placed in an EPA approved spill containment basin.</p> <p>Backhaul all trash to Troy Meadows. Do NOT leave trash at drop points or at portable toilet locations.</p> <p>Initial attack resources will be designated at the morning briefing.</p>									
8. Communications									
Name	Ch	Function	Rx Freq	Rx Tone	Tx Freq	Tx Tone	Mode	Notes	
NIFC C6	1	COMMAND	168.4750	(T6) 156.7	165.4000	(T6) 156.7	A	SHERMAN PEAK	
NIFC C31	4	COMMAND	167.8375	(T6) 156.7	162.1750	(T6) 156.7	A	BALD MOUNTAIN	
NIFC T4	8	TACTICAL	166.7250	0.0	166.7250	0.0	A	TROUT FIRE	
A/G TAC N	13	A/G TAC	164.6000	0.0	164.6000	0.0	A		
CALCORD	15	TACTICAL	156.0750	(T6) 156.7	156.0750	(T6) 156.7	A	MEDEVAC	
AIRGUARD	16	EMERGENCY	168.6250	0.0	168.6250	(T1) 110.9	A	EMERGENCY	
9. Prepared by: Name:		Anthony Watts			RESL				
					Signature:				
ICS 204		Date/Time: 8/5/2024			2200		Personnel Count: 177		

AIR OPERATIONS SUMMARY ICS-220									
Time Prepared			Date Prepared			Prepared By			
0000			Monday, August 5, 2024			Steadman/Kessler			
Shutdown			Operational Period - Date			Operational Period - Time			
20:22:00			Tuesday, August 6, 2024			0700-0700			
MRB Locations			SQF Lightning TFR Information			Borel TFR Information			
Name/ Site (Day)			Request #			Request #			
Latitude 118 24.536			Radius: Poly NM			Radius: Poly NM			
Longitude 35 40.751			Altitude: 13000'			Altitude: 13000'			
			Centerpoint: Lat Long			Centerpoint: Lat Long			
Latitude			NOTAMS: 4/7582			NOTAMS: 4/2591			
			Frequency 124.425			Frequency 133.525			
			http://tfr.faa.gov/tfr2/list.html			http://tfr.faa.gov/tfr2/list.html			
<p>AVOID Aerial Application of Retardant / Foam / Agent within 300' of Waterways, Bodies of Water, etc. If Retardant / Foam / Agent is Dropped Within These Areas Immediately Notify the AOB/D and Provide the Following Information: Lat / Long, Estimated Number of Gallons and a Map Detailing The Area. Separate costs by fire.</p>									
<p>All GPS DATA TO BE COLLECTED IN DEGREES, MINUTES, DECIMAL MINUTES FORMAT. H-407 ALS, Hoist and NVG Capable</p>									
SQF Lightning Frequencies	RX	Tone	TX	Tone	AM / FM	BORELE Frequencies	RX	Tone	TX
AIR TACTICS Primary	172.5500		172.5500		FM	AIR TACTICS Primary	162.3875		162.3875
AIR / AIR TFR	124.4250		124.4250		AM	AIR / AIR TFR	133.5250		133.5250
AIR / AIR ROTOR	134.4250		134.4250		AM	AIR / AIR ROTOR	120.9750		120.9750
AIR / GROUND COMMAND	172.4375		172.4375		FM	AIR / AIR ROTOR BRIEF	128.6750		128.6750
AIR / GROUND TACTICAL	164.6000		164.6000		FM	AIR / GROUND COMMAND	169.7625		169.7625
					FM	AIR / GROUND TACTICAL	165.4375		165.4375
COMMAND	See Com Plan		See Com Plan		FM	Position	Name	Phone	Trainee Name
HELIBASE DECK	163.1000	156.7 (6)	163.1000	156.7 (6)	FM	AOBD			
CALCORD - MEDICAL	156.0750	156.7 (6)	156.0750	156.7 (6)	FM	ASGS	John Steadman	760-468-1974	Lynn Correa 760-417-1220
AIR GUARD - Emergency Only	168.6250		168.6250	110.9 (1)	FM	HEBM	Geoffrey Gillespie (Kernville)	559-920-3446	Mario Melendez 661-912-8235
					FM	HEBM	Cindy Bradley (Shafter)	559-916-9355	Edwin Fell 208-861-7158
						ATGS	On Order		
						ASGS(T)	Lee Kessler (Trout)	218-244-1765	
HELICOPTERS									
FAA #	Type	Make/Model	Helibase	Start	Avail	Remarks / A - #	Rescue Ship Information		
HT-115	1	HH-60L	Shafter	0700	0800	LL Bucket	Day	Night	
HB-83BH	1	EH-60A	Shafter	0700	0800	LL Bucket	Name	H-407	H-407
HB-0FS	1	UH-60A	Shafter	DAY	OFF	LL Bucket	Phone	661-282-7030 (24HR)	
HT-0HX	1	S-64	Shafter	0700	0800	Loaded	Make/Model	UH1H	UH1H
HT-7RA	1	CH-47	Shafter	0700	0800	TBD	Location	Kernville	Kernville
HT-2HT	1	CH-54A	Shafter	0700	0800	Tank	Request Procedure for These Aircraft:		
HB-947CH	1	CH-47D	Shafter	0700	0800	Tank	See Medical Plan For Additional Info		
							Note:		
H-530 (534HQ)	2	Bell 205 A1++	Kernville	0700	0800	Bucket			
H-534 (N56TA)	2	Bell 205 A1++	Kernville	0700	0800	Bucket			
H-522 (N99WL)	2	Bell 205 A1++	Kernville	0700	0800	Bucket			
H-523 (N262HQ)	2	Bell 205 A1++	Kernville	0700	0800	Bucket			
H-538 (N380PL)	2	Bell 205 A1++	Kernville	0700	0800	Bucket			
H-535 (N911FS)	3	Bell 407	Shafter	0700	0800	Bucket	UAS		
H-554 (N44HX)	3	Bell 407	Kernville	0700	0800	Bucket	Identifier	Make/Model	Operator
H-509 (N41HX)	3	Bell 407	Shafter	0700	0800	HICO	UR-32	Alta X	J.Erickson
							Type	Shift	Avail
							3	Day	0800
							Helibase Name:	Porterville	Helibase Name:
							Latitude:	36 01.77	Latitude:
							Longitude:	119 03.76	Longitude:

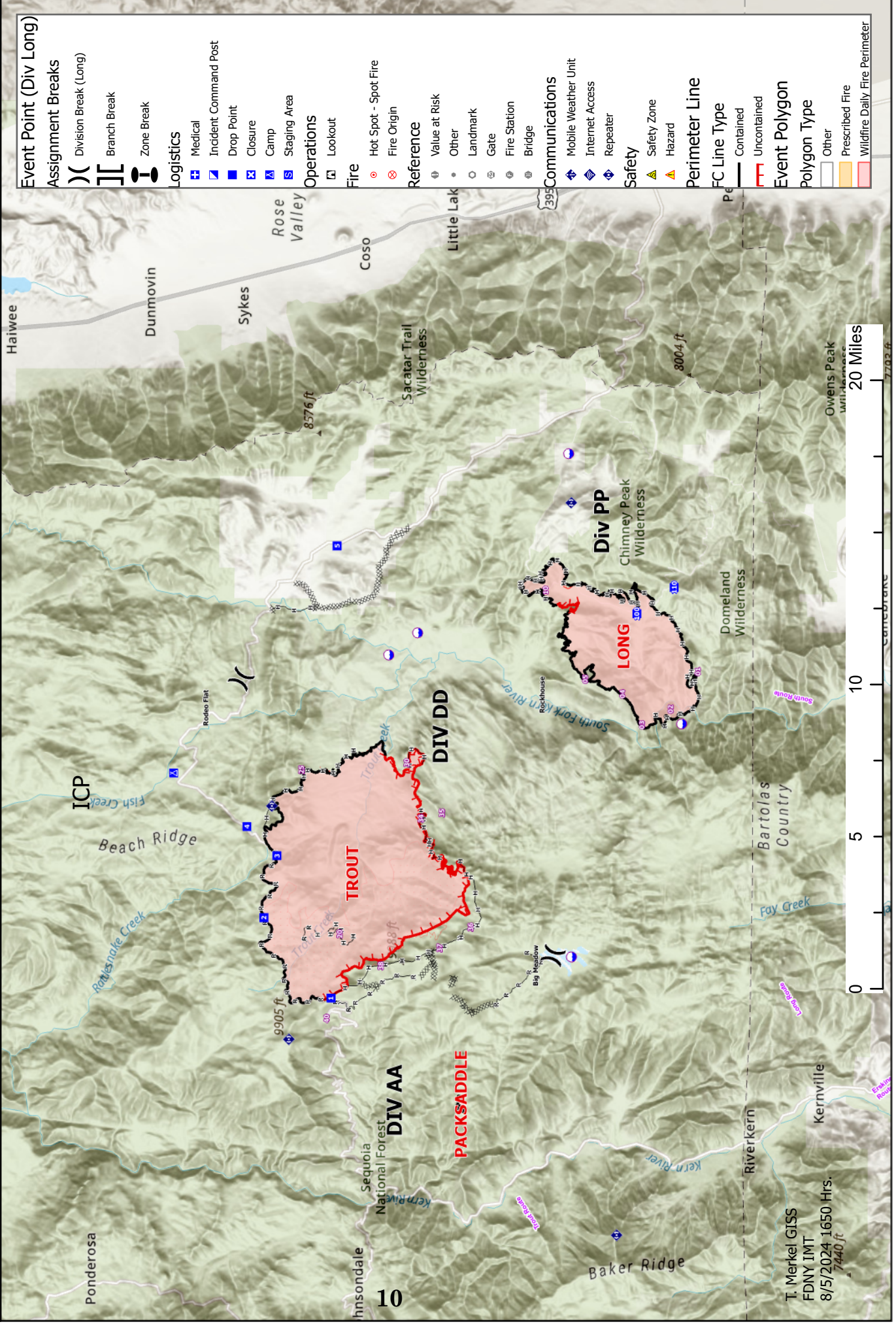
ICS 205 - INCIDENT RADIO COMMUNICATIONS PLAN										CONTROLLED UNCLASSIFIED INFORMATION//BASIC	
1. Incident Name:		2. Date/Time Prepared		3. Operational Period:							
2024 SQF LIGHTNING		08/05/2024 1358		Date From:	08/06/24	Date To:	08/07/24	Time From:	0700	Time To:	0700
4. Communications											
Ch#	Function	Name	Assigned To	Rx Freq	Rx Tone	Tx Freq	Tx Tone	Mode	Notes		
1	COMMAND	NIFC C6	ALL DIVS	168.475	(T6) 156.7	165.4	(T6) 156.7	A	SHERMAN PEAK		
2	COMMAND	NIFC C9	ALL DIVS	170.0125	(T6) 156.7	165.25	(T6) 156.7	A	BAKER POINT		
3	COMMAND	NIFC C23	ALL DIVS	173.025	(T6) 156.7	162.1875	(T6) 156.7	A	CHIMNEY PEAK		
4	COMMAND	NIFC C31	ALL DIVS	167.8375	(T6) 156.7	162.175	(T6) 156.7	A	BALD MOUNTAIN		
5	TACTICAL	NIFC T1	DIV DD	168.05	0	168.05	0	A	TROUT FIRE		
6	TACTICAL	NIFC T2	UNASSIGNED	168.2	0	168.2	0	A			
7	TACTICAL	NIFC T3	DIV PP	168.6	0	168.6	0	A	LONG FIRE		
8	TACTICAL	NIFC T4	DIV AA	166.725	0	166.725	0	A	TROUT FIRE		
9	TACTICAL	NIFC T5	UNASSIGNED	166.775	0	166.775	0	A			
10	TACTICAL	NIFC T6	UNASSIGNED	168.25	0	168.25	0	A			
11		WX-162.550	WEATHER						NOAA WEATHER RX ONLY		
12	TACTICAL	R5 T4	IA TAC	166.55	0	166.55	0	A			
13	A/G TAC	A/G TAC N	ALL DIVS	164.6	0	164.6	0	A			
14	A/G TAC	A/G TAC N	ALL DIVS	164.6	0	164.6	0	A			
15	TACTICAL	CALCORD	ALL DIVS	156.075	(T6) 156.7	156.075	(T6) 156.7	A	MEDEVAC		
16	EMERGENCY	AIRGUARD	ALL DIVS	168.625	0	168.625	(T1) 110.9	A	EMERGENCY		
17											
18											
19											
20	EMERGENCY	AIRGUARD	ALL DIVS	168.625	0	168.625	(T1) 110.9	A	EMERGENCY		
5. Special Instructions											
6. Prepared by (Communications Unit Leader): Name: Jon Hadden 718-679-5296											
Signature: DS: Jonathan M. Hadden										Date/Time: 08/05/2024 1358	
ICS 205 - CONTROLLED UNCLASSIFIED INFORMATION//BASIC											

IAP Map Operational Period 8/6/2024 0700 - 8/7/2024 0700

SQF Lightning
CA-SQF-00124



Approx. 32,643 Acres
8/5/2024 1650 Hrs.
NAD 1983 UTM Zone 11N
Reference Scale: 1:100,000



ICS 206 Template (for IAP-Appendix A)

MEDICAL PLAN ICS 206	1. INCIDENT NAME SQF Lighting Complex	2. DATE PREPARED 08/05/2024	3. TIME PREPARED 1600	4. OPERATIONAL PERIOD 8/06/2024 0700 to 8/07/2024 0700			
5. INCIDENT MEDICAL AID STATIONS							
MEDICAL AID STATIONS	LOCATION			PARAMEDICS			
				YES	NO		
ICP	Black Rock Ranger Station				X		
Troy Meadows Camp	Troy Meadows Campground-Medical/Supply Tent			EMT			
6. TRANSPORTATION							
A. AIR AMBULANCES							
NAME	LOCATION	PHONE			PARAMEDICS		
					YES	NO	
Kern 407 (Day and Night Hoist)	Kernville Helibase	Trout Communications			X		
Local 911 System	Porterville & Fresno	Porterville			X		
T-CAD Tulare County Medivac	Porterville/Visalia	559-687-3050			X		
B. GROUND AMBULANCES & REM TEAMS							
NAME	LOCATION			PARAMEDICS			
				YES	NO		
Ambulance 1	DP-1			X			
Local 911 System-Kern County	Kernville & Lake Isabella (West Side)			X			
Local 911 System-Tulare County	Kennedy Meadows (East Side)				X		
Local 911 System-Tulare County	Inyo-Kern (East Side)			X			
7. HOSPITALS							
NAME	ADDRESS	TRAVEL TIME		PHONE	Trauma Center	Burn Center	Helipad
	Lat & Long Helipad	AIR	GRND				
Kern Valley Healthcare District	6412 Laurel Ave, Lake Isabella, CA 93420 Lat/Long: 35.6351365, -118.4073602	00:20	02:20	760-379-2681			X
Kern Medical Center	1700 Mount Vernon Ave. Bakersfield, CA 93306 Lat/Long: 35.33829347, -118.9705331	00:40	03:45	661-326-2000	Level 2		X
Bakersfield Memorial Hospital	420 34 th St. Bakersfield, CA 93301 Lat/Long: 35.3909088, -119.0060445	00:40	03:39	661-327-4647		X	X
Ridgecrest Regional Hospital	1081th North China Lake Blvd, Ridgecrest, CA 93555 Lat/Long: 35.64086, -117.671187	00:30	01:33	760-446-3551	Level 4		X
8. MEDICAL EMERGENCY PROCEDURES							
<p><u>LINE "MEDICAL-EMERGENCY" PLAN:</u></p> <p>- Reporting Party to contact Communications with:</p> <ul style="list-style-type: none"> • Patient Complaint, Condition and Location via Tactical or Command frequency. • Red, Yellow & Green Patients triggers Incident within Incident (IWI) • The highest qualified responder will run "Medical-Emergency" on the assigned frequency assuming the role of IWI IC. • IWI IC will use "Medical Incident Report" worksheet on back of this page or in IRPG. • Communications contacts Medical Unit Leader on the assigned frequency or cell phone (list number). <p>IN-CAMP – 24 HOUR MEDICAL</p> <ul style="list-style-type: none"> • Contact incident Communications with: Patient Complaint, Condition and Location via LOGS net or assigned frequency. 							
ICS 206 6/2017	9. PREPARED BY: (Medical Unit Leader) MEDL Kevin Klytta – MEDL (t)			10. REVIEWED BY: (Safety Officer) Daniel Crowley – SOFR (t)			

SAFETY MESSAGE

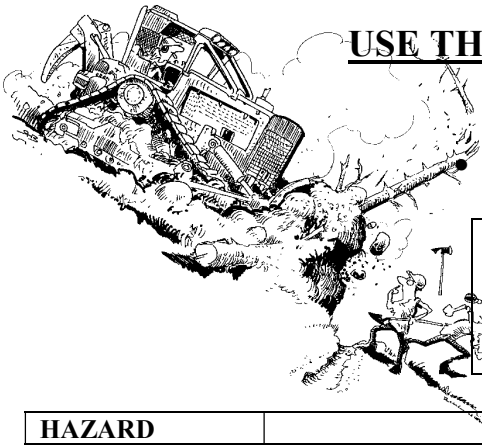
Incident: 2024 SQF Lightning	Date: August 6, 2024 – August 7, 2024	Shift: 0700 - 0700
--	---	------------------------------

SAFETY IS OUR FIRST PRIORITY

Firefighter safety comes first on every fire, every time.

Crew Safety Is Dependent Upon Competent and Confident Leadership

- **TAKE CHARGE** of assigned resources
- **MOTIVATE** firefighters with a “can do” safety attitude
- **DEMONSTRATE INITIATE** by taking action in the absence of orders
- **COMMUNICATE** by giving specific instructions and asking for feedback
- **SUPERVISE** at the scene of the action



USE THE INCIDENT RESPONSE POCKET GUIDE

- Assess The Situation
 - Identify The Hazards
- Determine The Hazard Controls or Mitigations



FIRELINE CONTROL STRATEGY

- Continue Patrolling For Hot Spots
- Begin Hand Crew Rehab
- Begin Dozer Line Rehab

HAZARD	HAZARD CONTROL
Cold Trailing And Mop-Up Operations	<ul style="list-style-type: none"> • Issue warnings to lift hose with legs not back and to not twist backs with loads, watch for stump holes, nozzle spray ash, wear goggles, warn not to be complacent, keep your mind focused on your work, don't forget to look up, watch for each other.
Rehab Operations	<ul style="list-style-type: none"> • Warn crews to pull brush straight and not twist their backs, wear eye protection, and watch spacing
Helicopter Bucket Drops	<ul style="list-style-type: none"> • Clear drop area of all personnel prior to drop. Maintain 300 feet clear zone around dip site. No personnel in zone during dipping or dropping operation. Watch out for rotor downwash. Use clear text communication and identify ground contact with pilot.
Driving	<ul style="list-style-type: none"> • SLOW DOWN, do not over-drive mountain roads, watch for one-way traffic on maintained roads, anticipate meeting other vehicles, turn on headlights, use compression, maintain spacing, check brakes, clean windshield, observe max speed of 40 MPH on Chalk Creek Road.
Engine Operations	<ul style="list-style-type: none"> • Pull off roads to allow traffic to pass, watch soft shoulders, wear PPE, keep speed down, headlights on, use a spotter when parking in camp, use chock blocks.
Dozer Operations	<ul style="list-style-type: none"> • There is no safe area around a working dozer, make sure operator is wearing PPE, dozer boss is assigned, all personnel stay away from dozer—it's hard for him to see you.
Winds Shifting From SW to NW	<ul style="list-style-type: none"> • Be alert to indicators of sudden weather changes. Have a well understood plan of action for potential blow-up conditions. Remember and follow the “Standard Fire Orders” !!! Post lookouts and Communicate “heads-up” situations to others.
Dehydration	<ul style="list-style-type: none"> • Drink plenty of fluids (1 qt/hr), pace work, limit shift lengths.

Safety Officer Daniel Crowley	Line Safety Officers Steve Davis, Rob Shields
---	---

INCIDENT SAFETY ANALYSIS 215a

SQF Lightning / CA-SQF-001247 - Tuesday, August 06, 2024

8. Location	9. Hazard	6. Control or Abatement Action (Engineering, Administrative, PPE, Avoidance, Education, etc)
All	Firing Operations & Devices	<ul style="list-style-type: none"> ~ Only personnel trained in the use of each device will be authorized to use firing equipment. ~ Ensure all personnel are aware of firing operation that may affect them. ~ Wear appropriate PPE. ~ Ensure aerial/ground ignition plans have been adequately developed and personnel are briefed.
All	Driving & Traffic	<ul style="list-style-type: none"> ~ Practice "Defensive Driving" techniques traveling on all roads and city streets, mitigation strategy includes: ~ Use spotters when backing ~ Honk horn to alert personnel when backing ~ Always use headlights ~ Yield to pedestrians and bicycles ~ Observe posted speed limits ~ Follow 3 second rule of following distance when driving ~ Use chock blocks, turn wheels into hill"
All	Air Operations	<ul style="list-style-type: none"> ~Follow "" Aviation Watch-Out Situations"" on page 52, IRPG ~Don't plan on air resources for medical transport or resupply. ~Refer to page 65, IRPG for directing bucket drops. ~Ensure positive communication with all air resources."
All	Hazard Trees	<ul style="list-style-type: none"> ~ Follow "Hazard Tree Safety" guidelines, IRPG pages 20 & 21 ~ Post lookouts, or use a spotter in mop-up areas with personnel ~ Don't park vehicles or take breaks in high concentrations of hazard trees ~ Establish trigger points for disengagement during high wind events
All	Injury & Medical Emergency	<ul style="list-style-type: none"> ~ Assist injured employee appropriate medical care ~ Use EMT's on Division for initial care ~ Follow medical protocol as outlined in ICS-206
All	Steep Terrain & Rolling Debris	<ul style="list-style-type: none"> ~ Maintain 8'-10' spacing when working & walking ~ Don't work above any personnel ~ Evaluate necessity to send personnel in areas with limited access
All	Severe Weather	<ul style="list-style-type: none"> ~ Review and follow Thunderstorm Safety guidelines in IRPG page 17 ~ Observe 30/30 Rule for lightning safety.....page 19, IRPG ~ Establish "Trigger Points" to withdraw, and ensure all know rally site ~ Use "Risk Management" process to determine retreat criteria and actions ~ Carry rain gear and extra food and water if weather limits retreat to ICP
All	Extreme Fire Behavior	<ul style="list-style-type: none"> • Share weather observations with all personnel assigned to division • Establish "Trigger Points" to withdraw • Use "Risk Management" process prior to engaging in suppression actions, refer to page 1, IRPG "

INCIDENT SAFETY ANALYSIS 215a

All	Heat Related Illness (HRI)& Dehydration	<ul style="list-style-type: none"> ~Drink Fluids throughout operational period ~Carry extra water on line and cache water at drop points ~Take Frequent breaks, minimum of 10 minutes every hour ~Recognize symptoms of HEAT RELATED ILLNESS which include <ul style="list-style-type: none"> o Lack of energy o Headaches, dizziness o Lack of rest o No hunger, poor eating habits o Hot skin, and lack of sweating"
All	Chipper Operations	<ul style="list-style-type: none"> ~ Complete JHA and have operator(s) sign. ~ Only qualified personel to operate/feed the chipper ~ Wear proper PPE
All	Structure Protection & HAZMAT	<ul style="list-style-type: none"> "~ Review "Wildland Urban Interface" Watch outs, IRPG page 10 ~ Use "Structure Assessment" checklist, IRPG pages 11-14 ~ Follow "HAZMAT Incident Operations" on pages 32-37 in IRPG"
All	Mop-up& Rehab	<ul style="list-style-type: none"> ~ Do not work above or below personnel during rehab/mop-up operations ~ Alert crew personnel of rolling debris by yelling to affected individuals ~ Position debris that could roll vertically on slope ~ Wear eye protection
All	ATV/UTV use	<ul style="list-style-type: none"> ~Ensure equipment is inspected and safe to use. ~Ensure operator is trained and certified to operate. ~Ensure operator has proper PPE. ~Question if it is mission critical.
All	Wildlife & Livestock	<ul style="list-style-type: none"> ~ Watch out for wildlife & livestock inside fire area and along roadways. ~ Clean up all debris and trash during each operational period
All	Mines	<ul style="list-style-type: none"> ~ Identify and avoid mining areas ~ Notify others of hazard

Logistics Message:

Caterer: Grumpy Bear

Located at: Troy Meadows Camp

Hours: Breakfast 0600-0900

Dinner 1800-2100

Shower Trailer:

Located at: Troy Meadows Camp

Hours: 0530-1200 and 1400-2200

Laundry Services:

Located at: Blackrock ICP

Hours: 0730-1830

All Backhaul is to be dropped off at Blackrock ICP, follow signs past the fuel tanker.

PUBLIC INFORMATION

Fire Information Line: (917) 921-5226 (8:00 a.m. to 8:00 p.m.)

Media Inquiries: (917) 921-5226 (8:00 a.m. to 8:00 p.m.)

2024.lightning@firenet.gov

For the latest fire information: <https://tinyurl.com/5n8v4jcv> (inciweb)

We would appreciate photos or video from the field: fire activity, people at work, etc. Please Email content to 2024.lightning@firenet.gov and include the location, date taken, involved crew, and photo credit. If the photo has people working, please make sure they are in full PPE.

Any inquiries concerning the Borel Fire can be directed to the California Interagency Incident Management Team 11 (CAIIMT11) fire information number: 559-481-7849.

Finance Message

CTRs, Shift Tickets, and Supporting Documentation

- Please submit all documentation electronically via the Finance e-mail:
2024.Lightning.Finance@firenet.gov
- Include your resource number and the name of the fire you are working on.
- Write legibly and print your name below your signature.

Contractors

- Documents you need to send to Finance
 - RO
 - Contract/Agreement
 - Pre and Post Inspection
 - CTRs and/or STs
 - Evaluations
 - Supporting Documentation

Equipment Notes

- Write your Resource Number on the top right of your Shift Ticket
- In remarks box:
 - Record all Mileage or Transport Retained
 - Record any down time
- Interim payments are available at Finance upon request after 14 days of work

Contract Crew Notes

- Crew Boss time starts at briefing; all other crew members begin 30 minutes later.
- Show meal breaks
- Time ends upon return to ICP or Spike Camp

Fire Replacement

- Cache Items
 - Surrender and Replace at Supply for equivalent
- Non-Cache Items
 - Submit OF289 and GM213 to Finance
- Federal IT Equipment, including radios
 - Replacement occurs through your regional radio manager and CIO

Local Government Resources

- OES Support contact 2024.Borel.Finance@firenet.gov
- CAL Fire Support contact jack.franklin@fire.ca.gov

Trainees: There is much the (On Site) Incident Training Specialist can do to help make your assignment as productive as possible. Register your assignment with the TNSP to take advantage of the available services.

Access the Incident Training Page by scanning the QR Code on the IAP Cover Page and select the “Training check in” link.

There is also a check out link that will allow you to start the check out process. Avoid creating a delay when it’s time for you to Demob. On that link there is the Trainee exit interview to complete on your trainer.

Danielle McMillon, TNSP 213.760.1559 or email danielle.mcmillon@fire.lacounty.gov

Or go here for all forms <https://linktr.ee/dani.mcmillon>

08/06/2024

TENTATIVE RELEASE

2024 SQF LIGHTNING US-CA-SQF-001247

DEMOB INSTRUCTIONS:

Begin by speaking to the Resources unit in the Planning yurt to start the process and receive the ICS 221 Check-Out form. Based on your resource type and if any equipment was issued (Radios, Supply, etc.) it must be returned and you are to receive a signature from the corresponding section. If your vehicle requires an inspection, visit ground support and collect a signature if the inspection is satisfactory with no action needed. Next you are to visit the Finance section and ensure all of your documents have been submitted and recorded to their satisfaction. The final stop will be returning to the Planning yurt (Resources Unit) to turn in your ICS 221 and be final DEMOBED.

Resource ID:	Resource Name:	Last Work Day:
C-26	CRW2 J & SONS CONTRACTING	8/7/24
C-62	CR2I BEAR JAW	8/7/24
O-271	EMPF BAVERY	8/7/24
O-310	WFM2 SUMMIT	8/7/24
O-311	SMOD CALAVERAS	8/7/24

(This Page Intentionally Left Blank)

MEDICAL PLAN (ICS 206 WF)

Controlled Unclassified Information//Basic

Medical Incident Report

FOR A NON-EMERGENCY INCIDENT, WORK THROUGH CHAIN OF COMMAND TO REPORT AND TRANSPORT INJURED PERSONNEL AS NECESSARY.

FOR A MEDICAL EMERGENCY: IDENTIFY ON-SCENE INCIDENT COMMANDER BY NAME AND POSITION AND ANNOUNCE "MEDICAL EMERGENCY" TO INITIATE RESPONSE FROM IMT COMMUNICATIONS/DISPATCH.

Use the following items to communicate situation to communications / dispatch.

1. CONTACT COMMUNICATIONS / DISPATCH (**Verify correct frequency prior to starting report**)

Ex: "Communications, Div. Alpha. Stand-by for Emergency Traffic."

2. INCIDENT STATUS: Provide incident summary (including number of patients) and command structure.

Ex: "Communications, I have a Red priority patient, unconscious, struck by a falling tree. Requesting air ambulance to Forest Road 1 at (Lat./Long.) This will be the Trout Meadow Medical, IC is TFLD Jones. EMT Smith is providing medical care."

Severity of Emergency / Transport Priority	<input type="checkbox"/> RED / PRIORITY 1 Life or limb threatening injury or illness. Evacuation need is IMMEDIATE <i>Ex: Unconscious, difficulty breathing, bleeding severely, 2° – 3° burns more than 4 palm sizes, heat stroke, disoriented.</i> <input type="checkbox"/> YELLOW / PRIORITY 2 Serious Injury or illness. Evacuation may be DELAYED if necessary. <i>Ex: Significant trauma, unable to walk, 2° – 3° burns not more than 1-3 palm sizes.</i> <input type="checkbox"/> GREEN / PRIORITY 3 Minor Injury or illness. Non-Emergency transport <i>Ex: Sprains, strains, minor heat-related illness.</i>
Nature of Injury or Illness & Mechanism of Injury	Brief Summary of Injury or Illness (Ex: Unconscious, Struck by Falling Tree)
Evacuation Request	Air Ambulance / Short Haul/Hoist Ground Ambulance / Other
Patient Location	Descriptive Location & Lat. / Long. (WGS84)
Incident Name	Geographic Name + Medical (Ex: Trout Meadow Medical)
On-Scene Incident Commander	Name of on-scene IC of Incident within an Incident (Ex: TFLD Jones)
Patient Care	Name of Care Provider (Ex: EMT Smith)

3. INITIAL PATIENT ASSESSMENT: Complete this section for each patient as applicable (start with the most severe patient)

Patient Assessment: See IRPG PAGE 106

Treatment:

4. EVACUATION PLAN:

Evacuation Location (if different): (Descriptive Location (drop point, intersection, etc.) or Lat. / Long.) Patient's ETA to Evacuation Location:

Helispot / Extraction Site Size and Hazards:

5. ADDITIONAL RESOURCES / EQUIPMENT NEEDS:

Example: Paramedic/EMT, crews, immobilization devices, AED, oxygen, trauma bag, IV/fluid(s), splints, rope rescue, wheeled litter, HAZMAT, extrication

6. COMMUNICATIONS: Identify State Air/Ground EMS Frequencies and Hospital Contacts as applicable

Function	Channel Name/Number	Receive (RX)	Tone/NAC *	Transmit (TX)	Tone/NAC *
COMMAND					
AIR-TO-GRND					
TACTICAL					

7. CONTINGENCY: **Considerations:** If primary options fail, what actions can be implemented in conjunction with primary evacuation method? Be thinking ahead..

8. ADDITIONAL INFORMATION: Updates/Changes, etc.

REMEMBER: Confirm ETAs of resources ordered. Act according to your level of training. Be Alert. Keep Calm. Think Clearly. Act Decisively.