

# INCIDENT ACTION PLAN

## 2024 SQF LIGHTNING

### CA- SQF-001247 P5R3DR

*Tuesday*



## OPERATIONAL PERIOD

8/13/2024 0700

to

8/14/2024 0700

Approved by Incident Commander  
Michael Burke

A handwritten signature in black ink, appearing to be 'Michael Burke'.

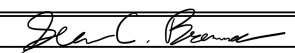
IAP and Maps



*(This Page Intentionally Left Blank)*



## ORGANIZATION ASSIGNMENT LIST (ICS 203)

<b>1. Incident Name:</b> 2024 SQF LIGHTNING		<b>2. Operational Period: Date From:</b> 8/13/2024 Time From: 0700		<b>Date To:</b> 8/14/2024 <b>Time To:</b> 0700	
<b>3. Incident Commander(s) and Command Staff:</b>			<b>7. Operation Section:</b>		
IC/UC's	Michael Burke	Operations	Tim Wodicka(t), Maris Gabliks		
Deputy	Steve Goldman	Deputy Operations			
Safety Officer	Rob Shields, Dan Crowley (t)	Night Ops			
Information Officer	Chris Cimorelli	Staging Area			
Liaison Officer	Craig Hachemeister(t)	Division/Group	AA	Mike Ware LWD 8/13	
<b>4. Agency/Organization Representatives:</b>		Division/Group	DD	Unstaffed	
Agency/Organization	Name	Division/Group	PP	Unstaffed	
AA USFS	Tony Edwards, Matthew Bokach	Division/Group			
AA BLM	Gabe Garcia	Division/Group			
USFS LEO	Ty Davis	Division/Group			
Kern River Dis. FMO	Joe Gonzalez	Division/Group			
Tulare County Sheriff	Josh Howser	<b>Branch</b>			
Tulare County Fire	Jesse Renteria	Division/Group			
Tribal Liason	William Garfield	Division/Group			
Cal OES	Javier Lara, Van Orro	Division/Group			
CCC	Eduardo Lopez	Division/Group			
SCE	Troy Whitman	Division/Group			
CalTrans	Domenico Caminity	Division/Group			
Lead READ	Todd Ellsworth	Division/Group			
		<b>Branch</b>			
<b>5. Planning Section:</b>		Division/Group			
Chief	Sean Brennan	Division/Group			
Deputy	Anthony Watts (t)	Division/Group			
Resource Unit		Division/Group			
Situation Unit	Michael Pisciotta, Fred Carlson (t)	<b>Branch</b>			
ITSS	John Costello	Division/Group			
Demobilization Unit		Division/Group			
GISS	Thomas Merkel, Nick Berretta (t)	Division/Group			
DOCL	Lisa Spiess	Division/Group			
IMET	Colin McKellar	Division/Group			
Training Tech Spec		<b>Air Operations Branch</b>		<b>Director:</b>	
Human Resources		Air Support Group Supervisor		Lee Kessler (t)	
Check-in		Air Tactical Group Supervisor			
<b>6. Logistics Section</b>				Helibase Manager	
Chief	Brian Fitzpatrick				
Supply Unit	Nathan Evans	<b>Finance Section</b>			
Facilities Unit	Chris Nock	Chief	Kathleen Knuth		
Ground Support Unit	Robert Merkle III	Time Unit	Robert Ditrani		
Communications Unit	Jon Hadden	PTRC	Robert Salorio (t)		
Communications Tech	Sean O'Grady	EQTR	Christopher McKeon (t)		
INCM	John Beck	Cost Unit	Phil Darcey		
Radio Operator	Dan Flynn, Yaanique Scott(t)				
Medical Unit	Bob Carlson, Kevin Klytta(t)				
Food Unit	Lee-Ann Lewis-Brander				
<b>Prepared By: Name:</b>	Sean Brennan	<b>Position/Title:</b>	PSC	<b>Signature:</b>	
<b>ICS 203</b>		<b>Date/Time:</b>	8/12/2024 2300 hours		



# Fire Weather Forecast



**FORECAST NO: 28**  
**PREDICTION FOR: August 13th, 2024**  
**DATE: August 12th, 2024**  
**FORECAST ISSUED: 1800 August 11th, 2024**

**Fire: SQF Lightning Fire**  
**UNIT: CA-SQF-001247**  
**IMET: Colin McKellar**  
**Signed: *Colin McKellar***

**WEATHER DISCUSSION:**

Today will be the coolest day of the week, with continued low RHs across the fire. Winds will not be as strong today, but will remain breezy through the early morning. More typical winds return on Wednesday, with continued dry conditions.

**TODAY:**

**WEATHER:** Sunny.  
**MAX TEMPERATURES:** 67-77°                      **MIN RH:** 19-27%

**20 FOOT WINDS:**

Slopes/Valleys: W 8-16/G20 mph, becoming W/NW 14-19/G30 mph after 1500.  
 Ridges/Exposed: W 19-25/G30 mph, becoming W/NW 19-26/G35 mph after 1500.

**TRANSPORT WIND:**

West 20-25 mph.

**CHANCE OF WETTING RAIN:** 0%

**INVERSION:** None.

**TONIGHT:**

**WEATHER:** Clear.  
**MIN TEMPERATURES:**  
 Mid-Slopes/Ridges: 52-57°                      **MAX RH:** 28-35%  
 Valleys/Drainages: 42-48°                      **MAX RH:** 53-63%

**20 FOOT WINDS:**

Slopes/Valleys: W/NW 14-19/G30 mph through 2400, then terrain-driven down slope 6-12 mph.  
 Ridges/Exposed: W/NW 19-26/G35 mph through 0500, then NW 10-15/G20 mph.

**TRANSPORT WIND:**

Northwest 10 mph.

**CHANCE OF WETTING RAIN:** 0%

**Inversion:** None.

**WEDNESDAY OUTLOOK:**

**WEATHER:** Sunny.  
**MAX TEMPERATURES:** 69-79°                      **MIN RH:** 15-24%

**20 FOOT WINDS:**

Slopes/Valleys: Terrain-driven down slope 6-12 mph., becoming W/SW 8-15/G23 mph after 1500.  
 Ridges/Exposed: W 10-15/G20 mph, becoming W/SW 10-17/G26 mph after 1500.

**TRANSPORT WIND:**

West to northwest 10-15 mph.

**CHANCE OF WETTING RAIN:** 0%

**INVERSION:** None.

# FIRE BEHAVIOR FORECAST

<b>FORECAST NUMBER:</b> 29	<b>TYPE OF FIRE:</b> Wildfire
<b>FIRE NAME:</b> SQF Lightning	<b>OPERATIONAL PERIOD:</b> 8/13/24
<b>DATE ISSUED:</b> 8/12/2024	<b>TIME ISSUED:</b> 1800
<b>UNIT:</b> CA-SQF	<b>SIGNED:</b> Dennis Burns /s/

## INPUTS

**\*\*\*The entire Fire Area is under a Fuels and Fire behavior advisory for fine fuel loading\*\*\*  
Cooler bu still RH**

### WEATHER SUMMARY:

**Temps:** Day 67-77

**RH:** Day 19-27%

**Winds:** Day W 14-19mph gusts up to 30mph Ridge top gusts up to 35mph.

Johnsondale ERC 58/ 95<sup>th</sup> Percentile POI 60-70%

## FIRE BEHAVIOR

**GENERAL:** Minimal forward fire progression is expected on the Trout Fire and no fire progression is expected on the Long Fire.

Fuels become will become sparse as the Trout Fire approaches the indirect line. Main fire spread will be log to log and in continuous patches of Manzanita. Any spotting will be short range less than 100'

### SPECIFIC:

#### Trout Fire:

The fire is burning in sparse fuels under timber understory. With the forecasted weather the fire will struggle to reach the indirect line in Div AA.

Expect fire activity to increase in the afternoon as the wind ramps up as this will vent the fire. Spotting should not be an issue with the wind direction. Although yesterdays IR showed almost no heat the Southwest corner could be problematic with the heavier fuel loading in this area.

No forward fire spread is expected on the other two divisions.

**Long Fire:** No forward fire progression expected.

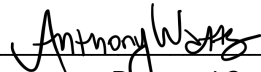
**AIR OPERATIONS:** Conditions will be good for air operations. No expected smoke or fog impacts.

## SAFETY

- Common Denominator 1 tragedies often occur on quiet areas of large fires.
- Common Denominator 2 tragedies often occur in light flashy fuels.

# ASSIGNMENT LIST (ICS 204 WF)

CONTROLLED UNCLASSIFIED  
INFORMATION/BASIC

<b>1. Incident Name:</b>		<b>2. Operational Period:</b>				<b>3. Branch</b>		<b>Division</b>	
<b>2024 SQF LIGHTNING</b>		Date From: 08/13/24		Date To: 08/14/24		<b>AA</b>		<b>Alpha-Alpha</b>	
		Time From: 0700		Time To: 0700					
<b>4. Operations Personnel:</b>						<b>Page 1 of 1</b>			
Operations Section Chief: <b>Tim Wodicka(t), Maris Gabliks</b>						Night Ops:			
Division/Group Supervisor: <b>Mike Ware LWD 8/13</b>						Air Attack:			
<b>5. Resources Assigned:</b>									
Resource Identifier	ALS	LWD	Leader	Personnel	Request #	Hours	Reporting Location		
DIVS ALLEMAN		8/13	BILL ALLEMAN	1	O-360.6	0700-1900	TROY MEADOWS		
DIVS(t) GUERIN		8/13	KEN GUERIN	1	O-360.21	0700-1900	TROY MEADOWS		
DIVS(t) COLLIER		8/13	CHRIS COLLIER	1	O-360.22	0700-1900	TROY MEADOWS		
CR2I SCORPIONS 2		8/15	ROGER CEBALLOS	21	C-72	0700-1900	TROY MEADOWS		
CR2I COBRAS 1		8/14	MANUEL ZAVALA	20	C-73	0700-1900	TROY MEADOWS		
CR2I FORT APACHE #06		8/17	JOSHUA NOSIE	20	C-61	0700-1900	TROY MEADOWS		
CRW2 SCORPIONS 3		8/14	ARTURO ZAPEDA	20	C-63	0700-1900	TROY MEADOWS		
ENG3 KS JOX E58		8/16	ERIC BARNUM	3	E-1	0700-1900	TROY MEADOWS		
ENG3 TRI CITY		8/19	SERVONDO HENRY	3	E-249	0700-1900	TROY MEADOWS		
ENG3 - 346 USFS		8/22	MICHAEL ULTRERAS	5	E-263	0700-1900	TROY MEADOWS		
WTT2 DYNAMITE WATER		8/17	MIKE RUDOLPH	1	E-192	0700-1900	TROY MEADOWS		
SOFR SHIELDS		8/13	ROB SHIELDS	1	O-360.5	0700-1900	TROY MEADOWS		
EMPF KERFOOT	X	8/21	ERRICK KERFOOT	1	O-420	0700-1900	TROY MEADOWS		
EMPF HETTINGA	X	8/18	ALLE HETTINGA	1	O-412.1	0700-1900	TROY MEADOWS		
EMTF SCHNEIDER		8/18	MACKENZIE SCHNEIDER	1	O-412.2	0700-1900	TROY MEADOWS		
EMTF(t) MONTES		8/16	ALONSO MONTES	1	O-386	0700-1900	TROY MEADOWS		
EMPF(t) DELGADO	X	8/16	STEVEN DELGADO	1	O-372	0700-1900	TROY MEADOWS		
EMTF JENKINS		8/14	JEFFREY JENKINS	1	O-366	0700-1900	TROY MEADOWS		
AMB2 AMBULANCE 1	X	8/15	DILLON NGUYEN	2	E-55	0700-1900	TROY MEADOWS		
<b>6. Work Assignments:</b>									
Hold and mop-up Sherman Pass Road from Bald Mountain to indirect line and improve former line to Sirretta Pass. All blue marked trees must be assessed for hazards and safety before engaging in operations. Assess areas for suppression repair work as needed. Conduct strategic burnout operations to secure lines as necessary.									
<b>7. Special Instructions:</b>									
Identify Drop Points and Helispot locations. Notify REAFs prior to heavy equipment use. All streamside pumps and associated jerry cans need to be placed in an EPA approved spill containment basin. Backhaul all equipment and trash to Troy Meadows. Do NOT leave trash at drop points or at portable toilet locations. Initial attack resources will be designated at the morning briefing.									
<b>8. Communications</b>									
Name	Ch	Function	Rx Freq	Rx Tone	Tx Freq	Tx Tone	Mode	Notes	
NIFC C6	1	COMMAND	168.4750	(T6) 156.7	165.4000	(T6) 156.7	A	SHERMAN PEAK	
NIFC C31	4	COMMAND	167.8375	(T6) 156.7	162.1750	(T6) 156.7	A	BALD MOUNTAIN	
NIFC T6	10	TACTICAL	168.2500	0.0	168.2500	0.0	A	TROUT FIRE	
A/G TAC N	13	A/G TAC	164.6000	0.0	164.6000	0.0	A		
CALCORD	15	TACTICAL	156.0750	(T6) 156.7	156.0750	(T6) 156.7	A	MEDEVAC	
AIRGUARD	16	EMERGENCY	168.6250	0.0	168.6250	(T1) 110.9	A	EMERGENCY	
<b>9. Prepared by: Name:</b>		Anthony Watts			RESL				
					Signature: 				
<b>ICS 204</b>		Date/Time: 8/12/2024			2200		Personnel Count: 104		

# ASSIGNMENT LIST (ICS 204 WF)

CONTROLLED UNCLASSIFIED  
INFORMATION//BASIC

<b>1. Incident Name:</b>		<b>2. Operational Period:</b>				<b>3. Branch</b>		<b>Division</b>	
<b>2024 SQF LIGHTNING</b>		Date From: 08/13/24		Date To: 08/14/24				<b>DD</b>	
		Time From: 0700		Time To: 0700					
<b>4. Operations Personnel:</b>						<b>Page 1 of 1</b>		<b>Delta-Delta</b>	
Operations Section Chief: <b>Tim Wodicka(t), Maris Gabliks</b>						Night Ops:			
Division/Group Supervisor: <b>Unstaffed</b>						Air Attack:			
<b>5. Resources Assigned:</b>									
Resource Identifier	ALS	LWD	Leader	Personnel	Request #	Hours	Reporting Location		
<b>UNSTAFFED</b>									
<b>6. Work Assignments:</b>									
Monitor by air.									
<b>7. Special Instructions:</b>									
<b>8. Communications</b>									
Name	Ch	Function	Rx Freq	Rx Tone	Tx Freq	Tx Tone	Mode	Notes	
NIFC C6	1	COMMAND	168.4750	(T6) 156.7	165.4000	(T6) 156.7	A	SHERMAN PEAK	
NIFC C31	4	COMMAND	167.8375	(T6) 156.7	162.1750	(T6) 156.7	A	BALD MOUNTAIN	
NIFC T1	5	TACTICAL	168.0500	0.0	168.0500	0.0	A	TROUT FIRE	
A/G TAC N	13	A/G TAC	164.6000	0.0	164.6000	0.0	A		
CALCORD	15	TACTICAL	156.0750	(T6) 156.7	156.0750	(T6) 156.7	A	MEDEVAC	
AIRGUARD	16	EMERGENCY	168.6250	0.0	168.6250	(T1) 110.9	A	EMERGENCY	
<b>9. Prepared by: Name:</b>			Anthony Watts			RESL			
						Signature:			
<b>ICS 204</b>			Date/Time: 8/12/2024 2200			Personnel Count: 0			

NIMS IAP

CONTROLLED UNCLASSIFIED INFORMATION//BASIC



# ASSIGNMENT LIST (ICS 204 WF)

CONTROLLED UNCLASSIFIED  
INFORMATION//BASIC

<b>1. Incident Name:</b>		<b>2. Operational Period:</b>				<b>3. Branch</b>		<b>Division</b>	
<b>2024 SQF LIGHTNING</b>		Date From: 08/13/24		Date To: 08/14/24		<b>PP</b>		<b>Papa-Papa</b>	
		Time From: 0700		Time To: 0700					
<b>4. Operations Personnel:</b>						<b>Page 1 of 1</b>			
Operations Section Chief: <b>Tim Wodicka(t), Maris Gabliks</b>						Night Ops:			
Division/Group Supervisor: <b>Unstaffed</b>						Air Attack:			
<b>5. Resources Assigned:</b>									
Resource Identifier	ALS	LWD	Leader	Personnel	Request #	Hours	Reporting Location		
<b>UNSTAFFED</b>									
<b>6. Work Assignments:</b>									
Monitor by air.									
<b>7. Special Instructions:</b>									
<b>8. Communications</b>									
Name	Ch	Function	Rx Freq	Rx Tone	Tx Freq	Tx Tone	Mode	Notes	
NIFC C6	1	COMMAND	168.4750	(T6) 156.7	165.4000	(T6) 156.7	A	SHERMAN PEAK	
NIFC C31	4	COMMAND	167.8375	(T6) 156.7	162.1750	(T6) 156.7	A	BALD MOUNTAIN	
NIFC T3	7	TACTICAL	168.6000	0.0	168.6000	0.0	A	LONG FIRE	
A/G TAC N	13	A/G TAC	164.6000	0.0	164.6000	0.0	A		
CALCORD	15	TACTICAL	156.0750	(T6) 156.7	156.0750	(T6) 156.7	A	MEDEVAC	
AIRGUARD	16	EMERGENCY	168.6250	0.0	168.6250	(T1) 110.9	A	EMERGENCY	
<b>9. Prepared by: Name:</b>			Anthony Watts			RESL			
						Signature:			
<b>ICS 204</b>			Date/Time: 8/12/2024 2200			Personnel Count: 0			

NIMS IAP

CONTROLLED UNCLASSIFIED INFORMATION//BASIC

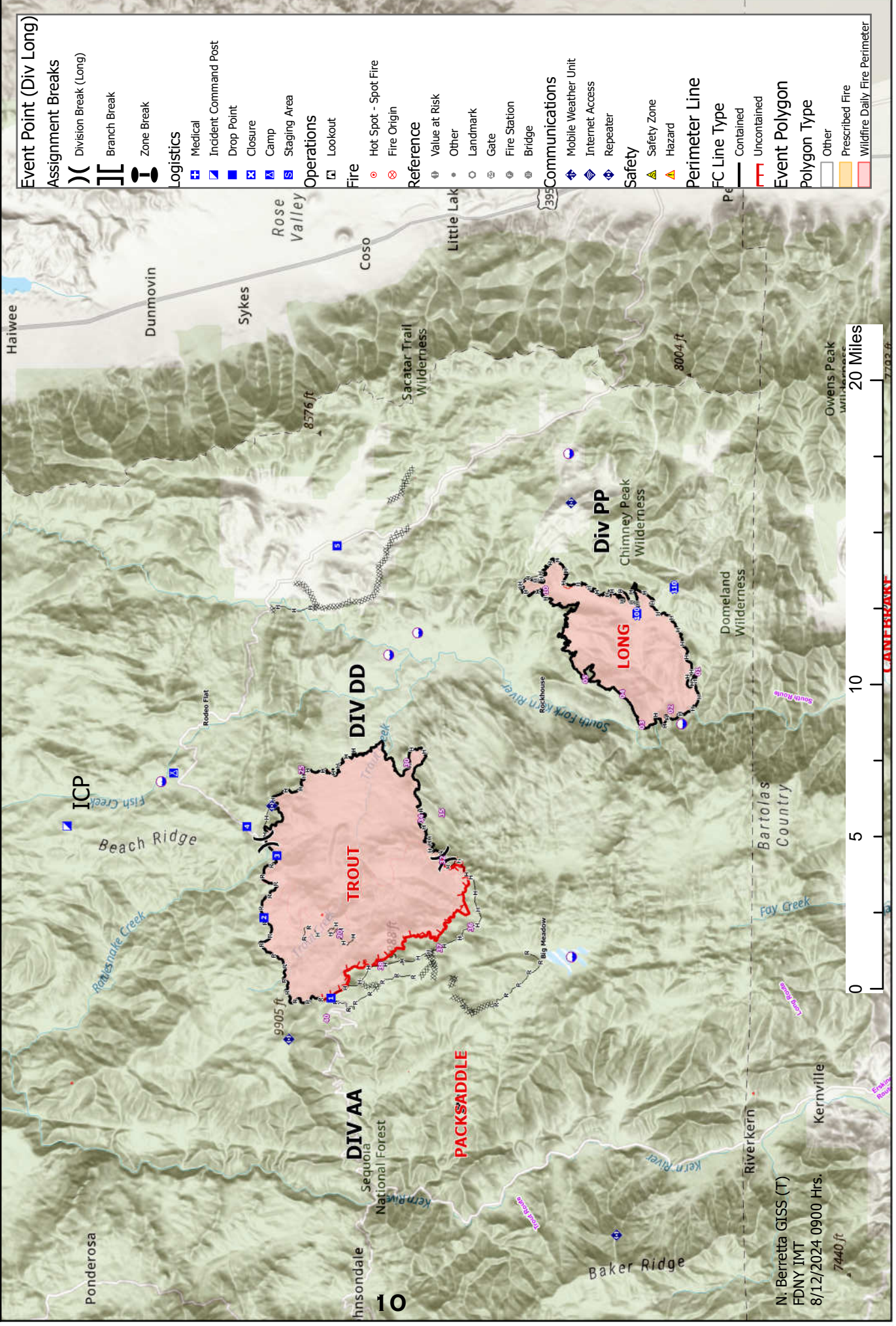


ICS 205 - INCIDENT RADIO COMMUNICATIONS PLAN										CONTROLLED UNCLASSIFIED INFORMATION//BASIC	
1. Incident Name:		2. Date/Time Prepared		3. Operational Period:							
2024 SQF LIGHTNING		08/12/2024 1615		Date From:	08/13/24	Date To:	08/14/24	Time From:	0700	Time To:	0700
<b>4. Communications</b>											
Ch#	Function	Name	Assigned To	Rx Freq	Rx Tone	Tx Freq	Tx Tone	Mode	Notes		
1	COMMAND	NIFC C6	ALL DIVS	168.475	(T6) 156.7	165.4	(T6) 156.7	A	SHERMAN PEAK		
2	COMMAND	NIFC C9	ALL DIVS	170.0125	(T6) 156.7	165.25	(T6) 156.7	A	BAKER POINT		
3	COMMAND	NIFC C23	ALL DIVS	173.025	(T6) 156.7	162.1875	(T6) 156.7	A	CHIMNEY PEAK		
4	COMMAND	NIFC C31	ALL DIVS	167.8375	(T6) 156.7	162.175	(T6) 156.7	A	BALD MOUNTAIN		
5	TACTICAL	NIFC T1	DIV DD	168.05	0	168.05	0	A	TROUT FIRE		
6	TACTICAL	NIFC T2	UNASSIGNED	168.2	0	168.2	0	A			
7	TACTICAL	NIFC T3	DIV PP	168.6	0	168.6	0	A	LONG FIRE		
8	TACTICAL	NIFC T4	UNASSIGNED	166.725	0	166.725	0	A			
9	TACTICAL	NIFC T5	UNASSIGNED	166.775	0	166.775	0	A			
10	TACTICAL	NIFC T6	DIV AA	168.25	0	168.25	0	A	TROUT FIRE		
11		WX-162.550	WEATHER						NOAA WEATHER RX ONLY		
12	TACTICAL	R5 T4	IA TAC	166.55	0	166.55	0	A			
13	A/G TAC	A/G TAC N	ALL DIVS	164.6	0	164.6	0	A			
14	A/G CMD N	A/G CMD	ALL DIVS	172.4375	0	172.4375	0	A			
15	TACTICAL	CALCORD	ALL DIVS	156.075	(T6) 156.7	156.075	(T6) 156.7	A	MEDEVAC		
16	EMERGENCY	AIRGUARD	ALL DIVS	168.625	0	168.625	(T1) 110.9	A	EMERGENCY		
17											
18											
19											
20	EMERGENCY	AIRGUARD	ALL DIVS	168.625	0	168.625	(T1) 110.9	A	EMERGENCY		
<b>5. Special Instructions</b>											
6. Prepared by (Communications Unit Leader): Name: Jon Hadden 718-679-5296											
Signature: DS: Jonathan M. Hadden										Date/Time: 08/12/2024 1615	
<b>ICS 205 - CONTROLLED UNCLASSIFIED INFORMATION//BASIC</b>											

**IAP Map Operational Period 8/13/2024 0700 - 8/14/2024 0700** Approx. 32,801 Acres  
**8/12/2024 0900 Hrs.**  
**NAD 1983 UTM Zone 11N**  
**Reference Scale: 1:100,000**



**CA-SQF-001247**  
**Lightning**  
**FDNY IMT**  
**8/12/2024 0900 Hrs.**

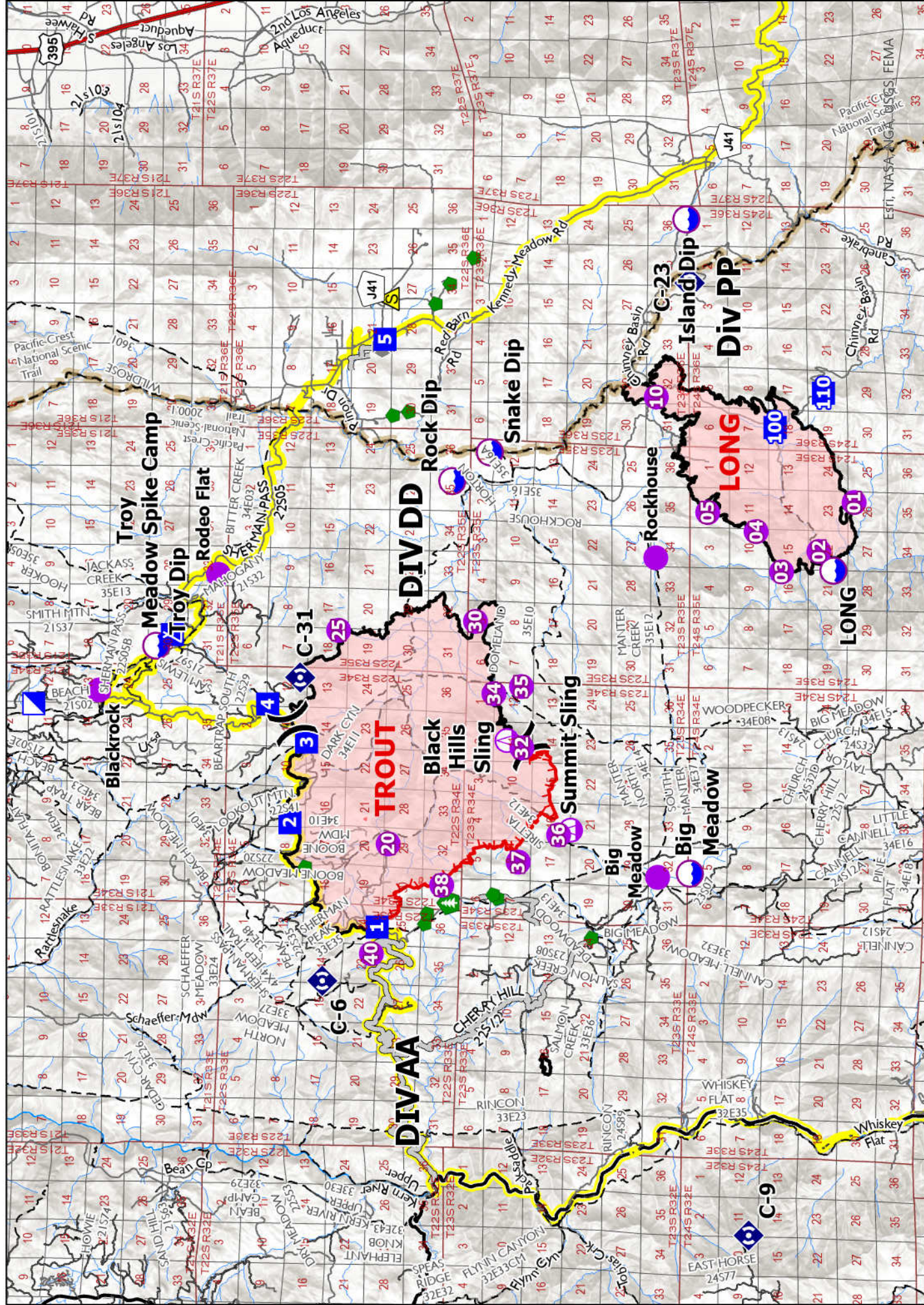


- Event Point (Div Long)**
- Assignment Breaks**
  - Division Break (Long)
  - Branch Break
  - Zone Break
- Logistics**
  - Medical
  - Incident Command Post
  - Drop Point
  - Closure
  - Camp
  - Staging Area
- Operations**
  - Lookout
  - Fire
  - Hot Spot - Spot Fire
  - Fire Origin
- Reference**
  - Value at Risk
  - Other
  - Landmark
  - Gate
  - Fire Station
  - Bridge
- Communications**
  - Mobile Weather Unit
  - Internet Access
  - Repeater
- Safety**
  - Safety Zone
  - Hazard
- Perimeter Line**
- FC Line Type**
  - Contained
  - Uncontained
- Event Polygon**
- Polygon Type**
  - Other
  - Prescribed Fire
  - Wildfire Daily Fire Perimeter



N. Berretta GISS (T)  
 FDNY IMT  
 8/12/2024 0900 Hrs.





**TRANSPORTATION**

2024 SQF Lighting  
CA-SQF-1247  
August 13, 2024

Map Updated: Nicholas Berretta FDNY IMT GIS 8/12/2024 12:05 PM

**Legend:**

- Access Route
- Contained
- Uncontained
- Wildfire Daily Fire Perimeter
- Main Travel Route
- Heavy Equipment Route
- Highways
- Local Connectors
- Local Roads
- Gravel Roads
- Dirt Roads
- Trails
- Pacific Crest Trail



<b>MEDICAL PLAN ICS 206</b>	1. INCIDENT NAME SQF Lighting Complex	2. DATE PREPARED 08/12/2024	3. TIME PREPARED 1600	4. OPERATIONAL PERIOD 8/13/2024 0700 to 8/14/2024 0700			
<b>5. INCIDENT MEDICAL AID STATIONS</b>							
MEDICAL AID STATIONS	LOCATION			PARAMEDICS			
				YES	NO		
ICP	Black Rock Ranger Station					<b>X</b>	
Troy Meadows Camp	Troy Meadows Campground-Medical Tent (Next to morning briefing)			<b>EMT</b>			
<b>6. TRANSPORTATION</b>							
<b>A. AIR AMBULANCES</b>							
NAME	LOCATION	PHONE			PARAMEDICS		
					YES	NO	
Kern 407 (Day and Night Hoist)	Kernville Helibase	Trout Communications			<b>X</b>		
Local 911 System	Porterville & Fresno	Porterville			<b>X</b>		
T-CAD Tulare County Medivac	Porterville/Visalia	559-687-3050			<b>X</b>		
<b>B. GROUND AMBULANCES &amp; REM TEAMS</b>							
NAME	LOCATION			PARAMEDICS			
				YES	NO		
Ambulance 1	DP-1			<b>X</b>			
Local 911 System-Kern County	Kernville & Lake Isabella (West Side)			<b>X</b>			
Local 911 System-Tulare County	Kennedy Meadows (East Side)					<b>X</b>	
Local 911 System-Tulare County	Inyo-Kern (East Side)			<b>X</b>			
<b>7. HOSPITALS</b>							
NAME	ADDRESS	TRAVEL TIME		PHONE	Trauma Center	Burn Center	Helipad
		AIR	Ground				
Kern Valley Healthcare District	6412 Laurel Ave, Lake Isabella, CA 93420 Lat/Long: 35.6351365, -118.4073602	00:20	02:20	760-379-2681			<b>X</b>
Kern Medical Center	1700 Mount Vernon Ave. Bakersfield, CA 93306 Lat/Long: 35.33829347, -118.9705331	00:40	03:45	661-326-2000	Level 2		<b>X</b>
Bakersfield Memorial Hospital	420 34 <sup>th</sup> St. Bakersfield, CA 93301 Lat/Long: 35.3909088, -119.0060445	00:40	03:39	661-327-4647		<b>X</b>	<b>X</b>
Ridgecrest Regional Hospital	1081th North China Lake Blvd, Ridgecrest, CA 93555 Lat/Long: 35.64086, -117.671187	00:30	01:33	760-446-3551	Level 4		<b>X</b>
<b>8. MEDICAL EMERGENCY PROCEDURES</b>							
<p><b><u>LINE "MEDICAL-EMERGENCY" PLAN:</u></b></p> <p>- <b>Reporting Party</b> to contact Communications with:</p> <ul style="list-style-type: none"> <li>• Patient Complaint, Condition and Location via Tactical or Command frequency.</li> <li>• <b>Red, Yellow &amp; Green</b> Patients triggers Incident within Incident (IWI)</li> <li>• The highest qualified responder will run "<b>Medical-Emergency</b>" on the assigned frequency assuming the role of IWI IC.</li> <li>• IWI IC will use "<b>Medical Incident Report</b>" worksheet on back of this page or in IRPG.</li> <li>• Communications contacts Medical Unit Leader on the assigned frequency or cell phone (list number).</li> </ul> <p><b>IN-CAMP – 24 HOUR MEDICAL</b></p> <ul style="list-style-type: none"> <li>• Contact incident Communications with: Patient Complaint, Condition and Location via LOGS net or assigned frequency.</li> </ul>							
<b>ICS 206</b> 6/2017	9. PREPARED BY: (Medical Unit Leader) MEDL <b>Kevin Klytta – MEDL (t)</b>			10. REVIEWED BY: (Safety Officer) <b>Daniel Crowley – SOFR (t)</b>			

**Incident:**  
SQF Lightning 2024

**Date:**  
August 13, 2024 – August 14, 2024

**Shift:**  
0700 - 0700



# **SAFETY MESSAGE**

## **SAFETY IS OUR FIRST PRIORITY**

*Fire fighter safety comes first on every fire, every time*



### **SAFETY THOUGHT**

Never go into a more dangerous area or situation because you are carrying a fire shelter.

### **Major Hazards and Risks:**

- Aviation
- Hazard Trees
- ATV/Vehicle Operations
- Complacency

### ***Accountability in Leadership***

It is easy to dodge our responsibilities,  
but we cannot dodge the **consequences of dodging** our responsibilities.



**SAFETY ENDS IN “Y”  
BUT IT STARTS WITH “YOU”**

**Do you  
have.....**

**L = Lookout**

**C = Communication**

**E = Escape Route(s)**

**S = Safety Zone(s)**

**Safety Officer**

Daniel Crowley, SOFR (T)

**Line Safety**

Rob Shields

## INCIDENT SAFETY ANALYSIS 215a

SQF Lightning / CA-SQF-001247 - Tuesday, August 13, 2024

8. Location	9. Hazard	6. Control or Abatement Action (Engineering, Administrative, PPE, Avoidance, Education, etc)
All	Driving & Traffic	"~ Practice "Defensive Driving" techniques traveling on all roads and city streets, mitigation strategy includes: ~ Use spotters when backing ~ Honk horn to alert personnel when backing ~ Always use headlights ~ Yield to pedestrians and bicycles ~ Observe posted speed limits ~ Follow 3 second rule of following distance when driving ~ Use chock blocks, turn wheels into hill" Parking on slopes
All	Air Operations	"~Follow "" Aviation Watch-Out Situations"" on page 52, IRPG ~Don't plan on air resources for medical transport or resupply. ~Refer to page 65, IRPG for directing bucket drops. ~Ensure positive communication with all air resources."
All	Hazard Trees	~ Follow "Hazard Tree Safety" guidelines, IRPG pages 20 & 21 ~ Post lookouts, or use a spotter in mop-up areas with personnel ~ Don't park vehicles or take breaks in high concentrations of hazard trees ~ Establish trigger points for disengagement during high wind events
All	Injury & Medical Emergency	~ Assist injured employee appropriate medical care ~ Use EMT's on Division for initial care ~ Follow medical protocol as outlined in ICS-206
All	Steep Terrain & Rolling Debris	~ Maintain 8'-10' spacing when working & walking ~ Don't work above any personnel ~ Evaluate necessity to send personnel in areas with limited access
All	Unburned Area	~ Monitor weather. ~ Base actions upon observed and predicted fire behavior. ~ LCES Checklist IRPG Pg 7. ~ Refer to "Look Up, Down and Around" IRPG Page 34.
All	Heat Related Illness (HRI)& Dehydration	"~Drink Fluids throughout operational period ~Carry extra watert on line and cache water at drop points ~Take Frequent breaks, minimum of 10 minutes every hour ~Recognize symptoms of HEAT RELATED ILLNESS which include o Lack of energy o Headaches, dizziness o Lack of rest o No hunger, poor eating habits o Hot skin, and lack of sweating" Refer to IRPG pages 110-111
All	Structure Protection & HAZMAT	"~ Review "Wildland Urban Interface" Watch outs, IRPG page 10 ~ Use "Structure Assessment" checklist, IRPG pages 11-14 ~ Follow "HAZMAT Incident Operations" on pages 32-37 in IRPG"
All	Mop-up& Rehab	~ Do not work above or below personnel during rehab/mop-up operations ~ Alert crew personnel of rolling debris by yelling to affected individuals ~ Position debris that could roll vertically on slope ~ Wear eye protection



## INCIDENT SAFETY ANALYSIS 215a

All	ATV/UTV use	<ul style="list-style-type: none"> <li>~Ensure equipment is inspected and safe to use.</li> <li>~Ensure operator is trained and certified to operate.</li> <li>~Ensure operator has proper PPE.</li> <li>~Question if it is mission critical.</li> </ul>
All	Heavy Equipment Operations	<ul style="list-style-type: none"> <li>~ Ensure communications are established with operators</li> <li>~ Use hand signals if other communications are unavailable</li> <li>~ Maintain a 50'-100' exclusion area around equipment</li> <li>~ Use a spotter when backing</li> </ul>
All	Wildlife & Livestock	<ul style="list-style-type: none"> <li>~ Watch out for wildlife &amp; livestock inside fire area and along roadways.</li> <li>~ Clean up all debris and trash during each operational period</li> </ul>
All	Mines	<ul style="list-style-type: none"> <li>~ Identify and avoid mining areas</li> <li>~ Notify others of hazard</li> </ul>

# Logistics Message:

Caterer: Grumpy Bear

Located at: Troy Meadows Camp

Hours: Breakfast 0600-0900

Dinner 1800-2100

Shower Trailer:

Located at: Troy Meadows Camp

Hours: 0530-1200 and 1400-2200

Laundry Services:

Located at: Blackrock ICP

Hours: 0730-1830

For any ordering needs please contact:

Nate Evans ORDM: [2024.lightning.ordering@firenet.gov](mailto:2024.lightning.ordering@firenet.gov)

All Backhaul is to be dropped off at Blackrock ICP, follow signs past the fuel tanker.

# **PUBLIC INFORMATION**

**Fire Information Line: (917) 921-5226 (8:00 a.m. to 8:00 p.m.)**

**Media Inquiries: (917) 921-5226 (8:00 a.m. to 8:00 p.m.)**

**[2024.lightning@firenet.gov](mailto:2024.lightning@firenet.gov)**

**For the latest fire information: <https://tinyurl.com/5n8v4jcv> (inciweb)**

**We would appreciate photos or video from the field: fire activity, people at work, etc. Please Email content to [2024.lightning@firenet.gov](mailto:2024.lightning@firenet.gov) and include the location, date taken, involved crew, and photo credit. If the photo has people working, please make sure they are in full PPE.**

**Any inquiries concerning the Borel Fire can be directed to the California Interagency Incident Management Team 11 (CAIIMT11) fire information number: 559-481-7849.**

# Finance Message

---

## CTRs, Shift Tickets, and Supporting Documentation

- Please submit all documentation electronically via the Finance e-mail:  
[2024.Lightning.Finance@firenet.gov](mailto:2024.Lightning.Finance@firenet.gov)
- Include your resource number and the name of the fire you are working on.
- Write legibly and print your name below your signature.

## Contractors

- Documents you need to send to Finance
  - RO
  - Contract/Agreement
  - Pre and Post Inspection
  - CTRs and/or STs
  - Evaluations
  - Supporting Documentation

## Equipment Notes

- Write your Resource Number on the top right of your Shift Ticket
- In remarks box:
  - Record all Mileage or Transport Retained
  - Record any down time
- Interim payments are available at Finance upon request after 14 days of work

## Contract Crew Notes

- Crew Boss time starts at briefing; all other crew members begin 30 minutes later.
- Show meal breaks
- Time ends upon return to ICP or Spike Camp

## Fire Replacement

- Cache Items
  - Surrender and Replace at Supply for equivalent
- Non-Cache Items
  - Submit OF289 and GM213 to Finance
- Federal IT Equipment, including radios
  - Replacement occurs through your regional radio manager and CIO

## Local Government Resources

- OES Support contact [2024.Borel.Finance@firenet.gov](mailto:2024.Borel.Finance@firenet.gov)
- CAL Fire Support contact [jack.franklin@fire.ca.gov](mailto:jack.franklin@fire.ca.gov)



# 2024 SQF Lightning Documentation Process



1. Name files in accordance with the standardized NWCG naming conventions:  
**{DocType}\_{Version or Unit/Author}\_{Date}\_{IncidentNumber}**

**EXAMPLE: UNIT DAILY LOGS – ICS 214**

**214\_Spiess\_20240806\_001247**

**EXAMPLE: GENERAL MESSAGES – ICS 213**

**213\_DOCL\_Spiess\_20240806\_001247**

**EXAMPLE: PERFORMANCE EVALUATIONS**

**PerfEvalO\_SpiessLisa\_20240806\_001247**

**\*Reminder:** For 213's, use SENDER's unit name and SENDER's Last Name if known  
**ONLY UPLOAD 213s YOU RECEIVE FROM OTHER UNITS**

2. Upload your files in one of two ways:

**A.** Upload daily into  
2024\_CASQF\_Lightning  
Teams>General Channel>files>  
**01 LIGHTNING\_To Be Filed in eDoc Box**

**B.** Email them daily to  
[2024.lightning.docs@firenet.gov](mailto:2024.lightning.docs@firenet.gov)

All documentation will be filed electronically in TEAMS. Any paper copies can be brought to DOCL desk in the Plans tent. If you need to scan files, there is one available in the Plans tent at ICP. Not sure which documents are Permanent Records? Reference the [Wildland Fire Incident Records-Retention Guidance](#).

If you have questions about what to file or how, check out **PMS 277**

**Need help? Ask!**

Lisa Spiess – DOCL-t

[2024.lightning.docs@firenet.gov](mailto:2024.lightning.docs@firenet.gov)

You can also catch me in the Plans tent!

**08/13/2024**

**TENTATIVE RELEASE**

**2024 SQF LIGHTNING US-CA-SQF-001247**

**DEMOB INSTRUCTIONS:**

Begin by speaking to the Resources unit in the Planning yurt to start the process and receive the ICS 221 Check-Out form. Based on your resource type and if any equipment was issued (Radios, Supply, etc.) it must be returned and you are to receive a signature from the corresponding section. If your vehicle requires an inspection, visit ground support and collect a signature if the inspection is satisfactory with no action needed. Next you are to visit the Finance section and ensure all of your documents have been submitted and recorded to their satisfaction. The final stop will be returning to the Planning yurt (Resources Unit) to turn in your ICS 221 and be final DEMOBED.

If you require **AIR TRAVEL** home, please see Planning 72 hours before your DEMOB date so we can coordinate the arrangements.

<b>Resource ID:</b>	<b>Resource Name:</b>	<b>Last Work Day:</b>
O-360.XX	IMT - IMT3 NY - FDNY	08/13/24
O-254	WILLIAM MCFADDEN	08/13/24
C-73	CR2I COBRAS 1	08/14/24
C-63	CRW2 SCORPIONS 3	08/14/24
O-366	EMTF JENKINS	08/14/24



**MEDICAL PLAN (ICS 206 WF)**

Controlled Unclassified Information//Basic

**Medical Incident Report**

**FOR A NON-EMERGENCY INCIDENT, WORK THROUGH CHAIN OF COMMAND TO REPORT AND TRANSPORT INJURED PERSONNEL AS NECESSARY.**

**FOR A MEDICAL EMERGENCY: IDENTIFY ON-SCENE INCIDENT COMMANDER BY NAME AND POSITION AND ANNOUNCE "MEDICAL EMERGENCY" TO INITIATE RESPONSE FROM IMT COMMUNICATIONS/DISPATCH.**

Use the following items to communicate situation to communications / dispatch.

1. CONTACT COMMUNICATIONS / DISPATCH (**Verify correct frequency prior to starting report**)

Ex: "Communications, Div. Alpha. Stand-by for Emergency Traffic."

2. INCIDENT STATUS: Provide incident summary (including number of patients) and command structure.

Ex: "Communications, I have a Red priority patient, unconscious, struck by a falling tree. Requesting air ambulance to Forest Road 1 at (Lat./Long.) This will be the Trout Meadow Medical, IC is TFLD Jones. EMT Smith is providing medical care."

Severity of Emergency / Transport Priority	<input type="checkbox"/> RED / PRIORITY 1 Life or limb threatening injury or illness. Evacuation need is IMMEDIATE <i>Ex: Unconscious, difficulty breathing, bleeding severely, 2° – 3° burns more than 4 palm sizes, heat stroke, disoriented.</i> <input type="checkbox"/> YELLOW / PRIORITY 2 Serious Injury or illness. Evacuation may be DELAYED if necessary. <i>Ex: Significant trauma, unable to walk, 2° – 3° burns not more than 1-3 palm sizes.</i> <input type="checkbox"/> GREEN / PRIORITY 3 Minor Injury or illness. Non-Emergency transport <i>Ex: Sprains, strains, minor heat-related illness.</i>
Nature of Injury or Illness & Mechanism of Injury	Brief Summary of Injury or Illness (Ex: Unconscious, Struck by Falling Tree)
Evacuation Request	Air Ambulance / Short Haul/Hoist Ground Ambulance / Other
Patient Location	Descriptive Location & Lat. / Long. (WGS84)
Incident Name	Geographic Name + Medical (Ex: Trout Meadow Medical)
On-Scene Incident Commander	Name of on-scene IC of Incident within an Incident (Ex: TFLD Jones)
Patient Care	Name of Care Provider (Ex: EMT Smith)

3. INITIAL PATIENT ASSESSMENT: Complete this section for each patient as applicable (start with the most severe patient)

Patient Assessment: See IRPG PAGE 106

Treatment:

4. EVACUATION PLAN:

Evacuation Location (if different): (Descriptive Location (drop point, intersection, etc.) or Lat. / Long.) Patient's ETA to Evacuation Location:

Helispot / Extraction Site Size and Hazards:

5. ADDITIONAL RESOURCES / EQUIPMENT NEEDS:

Example: Paramedic/EMT, crews, immobilization devices, AED, oxygen, trauma bag, IV/fluid(s), splints, rope rescue, wheeled litter, HAZMAT, extrication

6. COMMUNICATIONS: Identify State Air/Ground EMS Frequencies and Hospital Contacts as applicable

Function	Channel Name/Number	Receive (RX)	Tone/NAC *	Transmit (TX)	Tone/NAC *
COMMAND					
AIR-TO-GRND					
TACTICAL					

7. CONTINGENCY: **Considerations:** If primary options fail, what actions can be implemented in conjunction with primary evacuation method? Be thinking ahead..

8. ADDITIONAL INFORMATION: Updates/Changes, etc.

**REMEMBER:** Confirm ETAs of resources ordered. Act according to your level of training. Be Alert. Keep Calm. Think Clearly. Act Decisively.