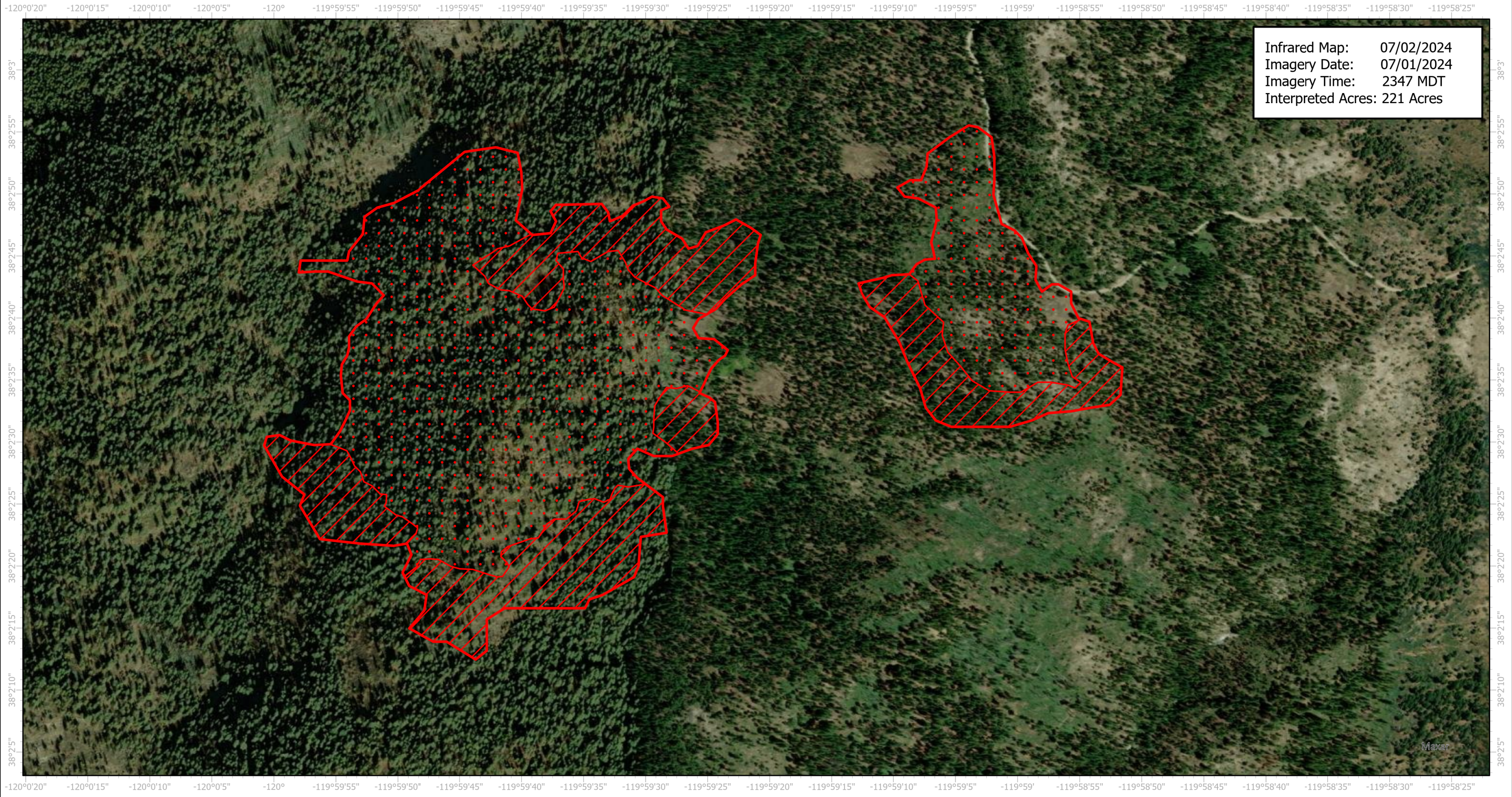
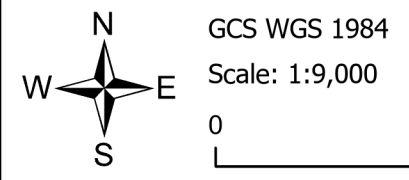





Sheering Infrared Map

Incident # (CA-STF-1060)



Infrared Map: 07/02/2024
Imagery Date: 07/01/2024
Imagery Time: 2347 MDT
Interpreted Acres: 221 Acres



-  IR Heat Perimeter
-  IR Intense Heat
-  IR Scattered Heat

Infrared Interpreter: Andrew Owens
email: Andrew.Owens@usda.gov
2 Miles