

Sunday

INCIDENT ACTION PLAN

PACK INCIDENT

CA-INF-002630
P5SDQK26 (0504)



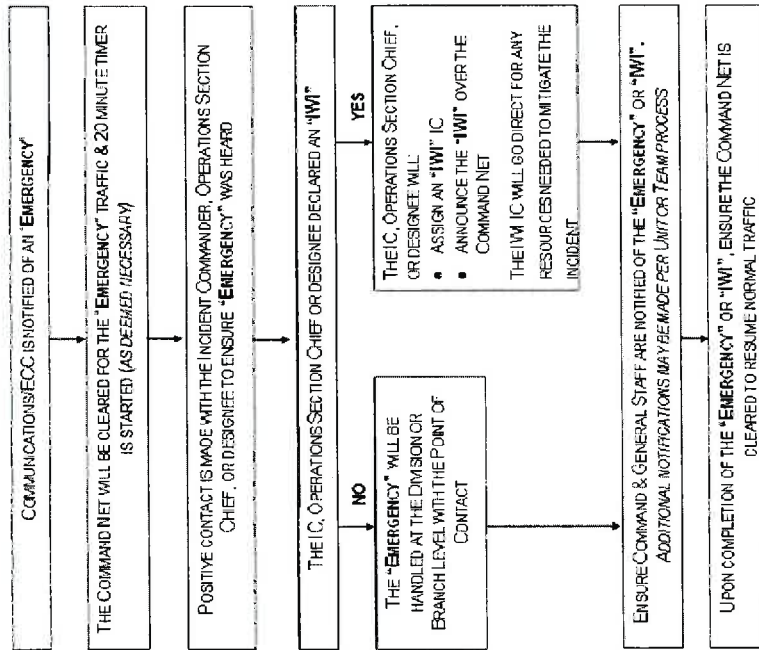
OPERATIONAL PERIOD

11/16/2025 0700
to
11/17/2025 0700



EMERGENCY & INCIDENT WITHIN INCIDENT (IWI) FLOW CHART

An EMERGENCY WILL ONLY BE DECLARED AS AN IWI BY THE INCIDENT COMMANDER, OPERATIONS SECTION CHIEF OR THEIR DESIGNEE



AT ANY TIME, AN EMERGENCY MAY BE UPGRADED TO AN IWI BY THE IC

IN-CAMP EMERGENCY: Contact Medical Unit with patient complaint/condition and location. Medical Staff will respond to stabilize incident.

INJURY REPORTING PROCEDURES

NATURE OF INJURY _____

LOCATION OF PATIENT _____

TRANSPORTATION REQUESTED BY: AIR _____ GROUND _____

POINT OF PICKUP _____

LAT _____ LONG _____

PATIENT UNIT ID _____ REMINDER: DO NOT GIVE PT NAME OVER RADIO

IS AN EMT WITH PATIENT: YES _____ NO _____

AGE _____

SEX: MALE _____ FEMALE _____

ALL EMERGENCIES---Secure the area and identify witnesses for later investigation. Keep an accurate log of events.

INCIDENT OBJECTIVES (ICS 202)

1. Incident Name: <div style="text-align: center;">PACK</div>	2. Operational Period: <div style="display: flex; justify-content: space-between;"> <div>Date From: 11/16/2025 Time From: 0700</div> <div>Date To: 11/17/2025 Time To: 0700</div> </div>
---	---

3. Objective(s):
Management Objectives

- Provide for firefighter and public safety at all times.
- Ensure coordinated, timely and accurate release of public information.
- Foster and maintain relationships with all cooperators and stakeholders.
- Protect economic, natural, cultural and heritage resources.
- Maintain fiscal accountability and keep costs commensurate with values at risk.
-
-
-

Operational Objectives

- Keep the fire North of Mt. Morgan
- Keep the fire East of Benton Crossing Rd
- Keep the fire South of North Landing Rd.
- Keep the fire West of the community of Crowley Lake

5. Site Safety Plan Required?

 Yes ☐ No ☒
Approved Site Safety Plan(s) Located at:
6. Incident Action Plan

- | | | | |
|---|--|---|--|
| <input checked="" type="checkbox"/> ICS 203 | <input checked="" type="checkbox"/> ICS 215A | <input type="checkbox"/> ICS 205 A | <input type="checkbox"/> |
| <input checked="" type="checkbox"/> ICS 204 | <input type="checkbox"/> ICS 220 | <input type="checkbox"/> Training Message | <input type="checkbox"/> |
| <input checked="" type="checkbox"/> ICS 205 | <input checked="" type="checkbox"/> Facility Maps | <input checked="" type="checkbox"/> Travel Map | <input type="checkbox"/> |
| <input checked="" type="checkbox"/> ICS 206 | <input checked="" type="checkbox"/> Weather Forecast | <input type="checkbox"/> Demob Plan | <input type="checkbox"/> County Health Message |
| <input checked="" type="checkbox"/> ICS 208 | <input checked="" type="checkbox"/> Fire Behavior | <input checked="" type="checkbox"/> Finance Message | <input checked="" type="checkbox"/> ICS 214 |

7. Prepared By:

James Lopez

Position/Title: PSC

Signature:

8. Approved by Incident Commander:

Bryan White

Signature:

DocuSigned by:


Bryan White

B5B50014F7B041F...

ICS 202

NIMS IAP

ORGANIZATION ASSIGNMENT LIST (ICS 203)

1. Incident Name: <div style="text-align: center;">PACK</div>		2. Operational Period: Date From: 11/16/2025 Date To: 11/17/2025 Time From: 0700 Time To: 0700	
3. Incident Commander(s) and Command Staff:		7. Operation Section:	
IC/UC's	Jason Wingard INF Brian Etheridge BLM(T)	Operations	Mark Scoville, Brandon Willson (T)
	Todd Hopkins CAL FIRE	Deputy Operations	Deano Esades/ Robby Peterson (T)/ Todd McDivitt
	Brent Gillespie MCSO	Night Ops	
Deputy	Dan Olson, Richard Tovar	Staging Area	
	Bryan White	Branch	
Safety Officer	Barry Owens, Dave Perez (T)	Division/Group	A J. Shutt
Information Officer	Daniel Potter, Benjamin Cossel	Division/Group	M E. Bernardo
Liaison Officer	Greg Bratcher	Division/Group	Z J. Rivers, T. Rye (T)
		Division/Group	
4. Agency/Organization Representatives:		Branch	
CALTRANS	Donald Conde	Division/Group	
Mono Emergency Management	Chris Mokracek	Division/Group	
CHP	Ben Lingenfelter	Division/Group	
Long Valley FD	Scott McGuire	Division/Group	
CDCR	James Varela/ Chris Trimnle (T)	Division/Group	
LADWP	Ryan Yeager/ John Hays	Branch	
Bishop Paiute Tribe	Darren Delgado	Division/Group	
SCE	Courtney Morrison	Division/Group	
CAL FIRE	John Toon	Division/Group	
USFS	Taro Pusina	Branch	
OES	Randy Unkovich	Division/Group	
5. Planning Section:		Division/Group	
Chief	Robert Clark, James Lopez (T)	Division/Group	
Deputy	Roger Noon	Division/Group	
Resource Unit	Jacob Hopkins	Division/Group	
Situation Unit	Dan Lerma, Ben Krone	Branch	
Documentation Unit		Division/Group	
Demobilization Unit		Division/Group	
GISS	Max Beheshti	Division/Group	
FBAN	Alex Giery	Division/Group	
IMET		Division/Group	
Training Tech Spec		Air Operations Branch	Director:
		Air Support Group Supervisor	
		Air Tactical Group Supervisor	
6. Logistics Section		Helibase Manager	
Chief	Milford Ferguson		
Supply Unit		8. Finance/Administration Section:	
Facilities Unit	Luis Castillo	Chief	Jack Franklin/ Cody Wright
Ground Support Unit	Jeremy Chistofferson	Time Unit	Cora Maga-Lafaele/ Adam Rubio (T)
Communications Unit	Ken Parker	Procurement Unit	Tim Myers
Medical Unit	Joshua Clark	Comp/Claims Unit	
		Cost Unit	Jennifer Combs
Prepared By: Name: James Lopez Position/Title: PSC ICS 203		Signature:  Date/Time: 11/15/2025 2300 hours	

Spot Forecast

FNUS75 KREV 152242 FWSREV

Pack Incident CAL FIRE National Weather Service Reno NV 242 PM PST Sat Nov 15 2025

Forecast is based on forecast start time of 0600 PST on November 16.

If conditions become unrepresentative...contact the National Weather Service in Reno.

DISCUSSION...

- Snow in the morning will transition to a rain/snow mix through the daytime, then back to snow Sunday night.
- Tuesday will offer a break in the precipitation, Wednesday chances (10% for AM, increasing to 30% late Wednesday).
- Wednesday's rain/snow mix will become all snowfall by Thursday morning, with 1-2" possible by early Friday morning as the storm exits.

SUNDAY DAYTIME

Sky/Weather.....Cloudy. Areas of freezing fog in the morning. Snow in the morning. Rain and snow likely early in the afternoon, then chance of rain and snow late in the afternoon.

Temperature.....29-31 at forecast start...Max 41-43.

RH.....95-100% at forecast start...Min 65-70%.

20-Foot Winds.....Winds southeast at 6 mph at forecast start...otherwise 3-7 mph becoming southeast 8-13 mph in the late morning and afternoon.

Chc Wetting Rain....0%.

Chance of thunder...0%.

Transport Winds.....South 10-15 mph shifting to the southwest around 20 mph in the afternoon.

SUNDAY NIGHT

Sky/Weather.....Mostly cloudy. Chance of rain overnight. Chance of snow overnight.

Temperature.....Min 25-27.

RH.....Max 95-100%.

20-Foot Winds.....South winds 7-12 mph becoming light.

Chc Wetting Rain....10%.

Chance of thunder...0%.

Transport Winds.....Southwest 10-15 mph.

\$\$ Forecaster...Richards...Requested by...Alex Giery FBAN...Type of request...WILDFIRE....TAG 2526000.1/RE

FIRE BEHAVIOR FORECAST

FORECAST NUMBER: 2

TYPE OF FIRE: WILDFIRE

FIRE NAME: PACK

OPERATIONAL PERIOD: 11/16 0700 – 11/17 0700

DATE ISSUED: November 15, 2025

TIME ISSUED: 1900

UNIT: CA-INF-2630

SIGNED: /s/ Alex Giery FBAN

WEATHER SUMMARY: *****WINTER WEATHER ADVISORY IN AFFECT UNTIL 1600*****

See attached Spot Weather Forecast

See attached Spot Weather Forecast

TOPOGRAPHY: Elevations: 6,700- 9,200' **Slopes:** 0%-65+% (Avg. 20%)

FIRE BEHAVIOR INPUTS	
1. Fuel Type	2. Fuel Load
3. Fuel Arrangement	4. Fuel Moisture
5. Fuel Surface Area	6. Fuel Volume
7. Fuel Shape	8. Fuel Color
9. Fuel Texture	10. Fuel Density
11. Fuel Temperature	12. Fuel Humidity
13. Fuel Wind Speed	14. Fuel Wind Direction
15. Fuel Rainfall	16. Fuel Snowfall
17. Fuel Icefall	18. Fuel Fogfall
19. Fuel Hailfall	20. Fuel Sleetfall
21. Fuel Thunderfall	22. Fuel Lightningfall
23. Fuel Tornado	24. Fuel Hurricane
25. Fuel Tsunami	26. Fuel Earthquake
27. Fuel Volcano	28. Fuel Asteroid
29. Fuel Comet	30. Fuel Meteor
31. Fuel Supernova	32. Fuel Black Hole
33. Fuel Galaxy	34. Fuel Universe
35. Fuel Time	36. Fuel Space
37. Fuel Energy	38. Fuel Matter
39. Fuel Force	40. Fuel Motion
41. Fuel Mass	42. Fuel Volume
43. Fuel Density	44. Fuel Temperature
45. Fuel Pressure	46. Fuel Humidity
47. Fuel Wind Speed	48. Fuel Wind Direction
49. Fuel Rainfall	50. Fuel Snowfall
51. Fuel Icefall	52. Fuel Fogfall
53. Fuel Hailfall	54. Fuel Sleetfall
55. Fuel Thunderfall	56. Fuel Lightningfall
57. Fuel Tornado	58. Fuel Hurricane
59. Fuel Tsunami	60. Fuel Earthquake
61. Fuel Volcano	62. Fuel Asteroid
63. Fuel Comet	64. Fuel Meteor
65. Fuel Supernova	66. Fuel Black Hole
67. Fuel Galaxy	68. Fuel Universe
69. Fuel Time	70. Fuel Space
71. Fuel Energy	72. Fuel Matter
73. Fuel Force	74. Fuel Motion
75. Fuel Mass	76. Fuel Volume
77. Fuel Density	78. Fuel Temperature
79. Fuel Pressure	80. Fuel Humidity
81. Fuel Wind Speed	82. Fuel Wind Direction
83. Fuel Rainfall	84. Fuel Snowfall
85. Fuel Icefall	86. Fuel Fogfall
87. Fuel Hailfall	88. Fuel Sleetfall
89. Fuel Thunderfall	90. Fuel Lightningfall
91. Fuel Tornado	92. Fuel Hurricane
93. Fuel Tsunami	94. Fuel Earthquake
95. Fuel Volcano	96. Fuel Asteroid
97. Fuel Comet	98. Fuel Meteor
99. Fuel Supernova	100. Fuel Black Hole
101. Fuel Galaxy	102. Fuel Universe
103. Fuel Time	104. Fuel Space
105. Fuel Energy	106. Fuel Matter
107. Fuel Force	108. Fuel Motion
109. Fuel Mass	110. Fuel Volume
111. Fuel Density	112. Fuel Temperature
113. Fuel Pressure	114. Fuel Humidity
115. Fuel Wind Speed	116. Fuel Wind Direction
117. Fuel Rainfall	118. Fuel Snowfall
119. Fuel Icefall	120. Fuel Fogfall
121. Fuel Hailfall	122. Fuel Sleetfall
123. Fuel Thunderfall	124. Fuel Lightningfall
125. Fuel Tornado	126. Fuel Hurricane
127. Fuel Tsunami	128. Fuel Earthquake
129. Fuel Volcano	130. Fuel Asteroid
131. Fuel Comet	132. Fuel Meteor
133. Fuel Supernova	134. Fuel Black Hole
135. Fuel Galaxy	136. Fuel Universe
137. Fuel Time	138. Fuel Space
139. Fuel Energy	140. Fuel Matter
141. Fuel Force	142. Fuel Motion
143. Fuel Mass	144. Fuel Volume
145. Fuel Density	146. Fuel Temperature
147. Fuel Pressure	148. Fuel Humidity
149. Fuel Wind Speed	150. Fuel Wind Direction
151. Fuel Rainfall	152. Fuel Snowfall
153. Fuel Icefall	154. Fuel Fogfall
155. Fuel Hailfall	156. Fuel Sleetfall
157. Fuel Thunderfall	158. Fuel Lightningfall
159. Fuel Tornado	160. Fuel Hurricane
161. Fuel Tsunami	162. Fuel Earthquake
163. Fuel Volcano	164. Fuel Asteroid
165. Fuel Comet	166. Fuel Meteor
167. Fuel Supernova	168. Fuel Black Hole
169. Fuel Galaxy	170. Fuel Universe
171. Fuel Time	172. Fuel Space
173. Fuel Energy	174. Fuel Matter
175. Fuel Force	176. Fuel Motion
177. Fuel Mass	178. Fuel Volume
179. Fuel Density	180. Fuel Temperature
181. Fuel Pressure	182. Fuel Humidity
183. Fuel Wind Speed	184. Fuel Wind Direction
185. Fuel Rainfall	186. Fuel Snowfall
187. Fuel Icefall	188. Fuel Fogfall
189. Fuel Hailfall	190. Fuel Sleetfall
191. Fuel Thunderfall	192. Fuel Lightningfall
193. Fuel Tornado	194. Fuel Hurricane
195. Fuel Tsunami	196. Fuel Earthquake
197. Fuel Volcano	198. Fuel Asteroid
199. Fuel Comet	200. Fuel Meteor
201. Fuel Supernova	202. Fuel Black Hole
203. Fuel Galaxy	204. Fuel Universe
205. Fuel Time	206. Fuel Space
207. Fuel Energy	208. Fuel Matter
209. Fuel Force	210. Fuel Motion
211. Fuel Mass	212. Fuel Volume
213. Fuel Density	214. Fuel Temperature
215. Fuel Pressure	216. Fuel Humidity
217. Fuel Wind Speed	218. Fuel Wind Direction
219. Fuel Rainfall	220. Fuel Snowfall
221. Fuel Icefall	222. Fuel Fogfall
223. Fuel Hailfall	224. Fuel Sleetfall
225. Fuel Thunderfall	226. Fuel Lightningfall
227. Fuel Tornado	228. Fuel Hurricane
229. Fuel Tsunami	230. Fuel Earthquake
231. Fuel Volcano	232. Fuel Asteroid
233. Fuel Comet	234. Fuel Meteor
235. Fuel Supernova	236. Fuel Black Hole
237. Fuel Galaxy	238. Fuel Universe
239. Fuel Time	240. Fuel Space
241. Fuel Energy	242. Fuel Matter
243. Fuel Force	244. Fuel Motion
245. Fuel Mass	246. Fuel Volume
247. Fuel Density	248. Fuel Temperature
249. Fuel Pressure	250. Fuel Humidity
251. Fuel Wind Speed	252. Fuel Wind Direction
253. Fuel Rainfall	254. Fuel Snowfall
255. Fuel Icefall	256. Fuel Fogfall
257. Fuel Hailfall	258. Fuel Sleetfall
259. Fuel Thunderfall	

Fuel Type	Rate of Spread	Flame Length	Spotting Dist.	Fire Danger Indices	
...If your work area includes -	(CH/HR = FPM)	Feet	Miles	ERC	BI
GS2 - Moderate Load, Grass	No spread	Due to	Inputs	<60th	<60th
SH4 - Moderate Load, Shrub	No spread	Due to	Inputs	Rock Creek RAWS	

FIRE BEHAVIOR NARRATIVE	
-------------------------	--

GENERAL:

Fire activity will be minimal across the incident today. It is anticipated to consist primarily of smoldering in the heavier fuel classes. The persistent precipitation should limit any fire growth or spread potential, due to fuels being saturated, making chance of ignitability negligible.

Probability of Ignition: Ignition of fine dead fuels not likely

SPOT: Fire spread not probable

SPECIFIC:

Division A: Smoldering may continue in heavier fuels. Fire spread not likely.

Division M: Minimal fire activity anticipated east of HWY 395. Most fuels should remain at moisture of extinction levels or saturated from precipitation.

Division Z: Larger size class fuels and standing dead trees in McGee Creek may continue to smolder and produce smoke. Fire spread not likely.

AIR OPERATIONS: Conditions will not be favorable to air operations.

Continued periods of rain through daylight hours. Episodes of low clouds and fog will occur.

Sunrise: 6:33 am

Sunrise: 6:33 am Sunset: 16:43 pm

SAFETY:

1. On relatively small fires or deceptively quiet areas of large fires.

ASSIGNMENT LIST (ICS 204 WF)

CONTROLLED UNCLASSIFIED
INFORMATION//BASIC

1. Incident Name: <div style="text-align: center; font-weight: bold; font-size: 1.2em;">PACK</div>	2. Operational Period: Date From: 11/16/25 Date To: 11/17/25 Time From: 0700 Time To: 0700	3. Branch Division <div style="text-align: center; font-weight: bold; font-size: 1.5em;">A</div>
4. Operations Personnel:		Page 1 of 1 Alpha

Operations Section Chief: Mark Scoville, Brandon Willson (T)	Night Ops:
Branch Director:	Branch Safety:
Division/Group Supervisor: J. Shutt	Air Attack:

5. Resources Assigned:	** Resources Below in Bold are 12 Hour **						
Resource Identifier	ALS	LWD	Leader	Personnel	Request #	Hours	Reporting Location
STC ANF 1603C		11/27	MITCHELL	22	E-16	0700-1900	ICP
STG BDU 9351G (CDCR)			SALGADO	37	C-12	0700-1900	ICP
CRW SQF BRECKENRIDGE		11/20	CORREA	22	C-3	0700-1900	ICP
IHC TEXAS CANYON		11/27	MARTINEZ	19	C-6	0700-1900	ICP
IHC LITTLE TUJUANGA			SORIANO	20	C-7	0700-1900	ICP
DZR2 ANF DZR 12			NAVA	3	E-9	0700-1900	ICP
WTT2 MDF WT 257		11/19	MENA	2	E-14	0700-1900	ICP
SOFL			McNAMARA	1	O-20045	0700-1900	ICP
REMS			TBD				ICP
FEMP			TBD				ICP

6. Work Assignments:

Hold fire within established control lines.

Improve direct fire line.

Mop up 150 ft in from control lines.

7. Special Instructions:

SOFL, REAF, and READ assigned to all divisions.

Work directly with Resource Advisors to implement suppression repair plan.

Report to Resource Advisors any findings of artifacts and leave them where they were found.

8. Communications

Name	Ch	Function	Rx Freq	Rx Tone	Tx Freq	Tx Tone	Mode	Notes
FS INF N	1	COMMAND	173.8000	0.0	165.0125	(T3) 131.8	A	INF NORTH FOREST NET TONE 3
R5 T4	3	TACTICAL	166.5500	0.0	166.5500	0.0	A	
	14							
CALCORD	15	TACTICAL	156.0750	(T6) 156.7	156.0750	(T6) 156.7	A	MEDICAL COORDINATION
AIRGUARD	16	EMERGENCY	168.6250	0.0	168.6250	(T1) 110.9	A	EMERGENCY

9. Prepared by: Name:	Jacob Hopkins	RESL	Signature: <i>Jacob Hopkins</i>
ICS 204	Date/Time: 11/15/2025 2200	Personnel Count: 126	

CONTROLLED UNCLASSIFIED
INFORMATION//BASIC

NIMS IAP

CONTROLLED UNCLASSIFIED INFORMATION//BASIC

CONTROLLED UNCLASSIFIED
INFORMATION//BASIC

CONTROLLED UNCLASSIFIED INFORMATION//BASIC

PACK FIRE **HEALTH AND SAFETY MESSAGE**

Maintain Situational Awareness!!!

INCIDENT PACK	CA-INF-002630	DATE: November 16, 2025	TIME: 0700-1900
----------------------	----------------------	--------------------------------	------------------------

Major Hazards and Risks:

Complacency-Demobilization-Situational Awareness

Mop Up Operations: When conducting mop up operations around structures be aware of unstable footing, ash pits, hazardous material indicators and wear appropriate PPE.

Driving: Drive defensively and make sure you have plenty of clearance when passing on roads. There is no need to speed while en-route or returning from the fire line. If traveling longer distances remain vigilant for civilian traffic near the fire's perimeter.

Situational Awareness: Assess your current situation constantly. Take the time to educate your crew on various parts of your division as it relates to the safety message.

Wildlife Awareness: Be vigilant during your assignment watching wildlife, the area is experiencing the annual deer migration that may enter your area or roadways. Bears have also been known to be in the area. Ensure you are disposing of your trash and your food is secure. Remember, **DO NOT FEED** wildlife.

Steep Slopes/Rolling Material/Snags: Watch your footing while hiking in steep terrain. Be careful of loose rolling debris. Maintain Situational Awareness while working around trees and snags.

Fatigue: Monitor personnel for fatigue and plan accordingly with work assignments. Stay operationally ready for possible new assignments.

Demobilization: Those who are traveling conduct a pre-trip inspection prior to departure, take breaks as needed, and drive safely to your home location.

Lookouts, Communication, Escape routes, Safety zones

TAILGATE SAFETY

- **Safety gear:** Ensure everyone has the appropriate PPE and is using it.
- **Accountability:** Supervisors know where their crews are at all times.
- **Hydration and Nutrition:** Monitor each other for proper hydration and nutrition.
- **Communication:** Everyone knows the comm plan and follows it.
- **Briefing:** Leader's intent is fully communicated, and safety briefing is provided.
- **LCES:** They are clear, understandable, and made known to everyone.

Planning For Medical Emergencies

Supervisors and all firefighters need to Review your ICS 206 ask and be able to answer the following questions:

What are we going to do if someone gets hurt?

- Is there personnel and equipment available to assist?

How will we get them out of here?


- What is your best extraction and transport method? Road, helispot, hoist? Primary plan and contingency plan in place?

How long will it take to get them to the hospital?

- Will you request air or ground resources?
- Are helicopters able to fly?


Incident Safety Officer: Dave Perez, SOF3 (T)

INCIDENT ACTION PLAN SAFETY ANALYSIS (ICS 215A)

1. Incident Name: Pack Fire		2. Incident Number: CA-INF-002630	
3. Date/Time Prepared: Date :11/15/2025 Time: 1500		4. Operational Period: Date From: 11/16/2015 Date To: 11/16/2025 Time From: 0700 Time To: 1900	
5. Incident Area	6. Hazards/Risks	7. Mitigations	
ALL	Weather conditions	Continuously monitor weather; adjust tactics for wind shifts, reduced visibility, and thunderstorms.	
ALL	Driving / Transportation - Steep grades, loose surfaces, increased weekend traffic, speeding in residential areas.	Maintain controlled speeds; follow posted limits; increase following distance; remain alert for increased public traffic.	
ALL	Power line safety	Treat all lines as energized; establish exclusion zones; notify utilities immediately if suspected to be energized.	
ALL	Travel / Access - Wetland, soft soils, risk of stuck vehicles	Identify wet areas; avoid when possible; use designated routes and scout access roads.	
ALL	Snags	Follow Hazard Tree Safety Guidelines (IRPG 2022 p. 20); limit number of personnel around snags and their exposure time; be especially alert around snags during wind events; check overhead for dead branches/suspended power poles in work areas.	
ALL	Wildlife - Bears, migrating deer entering work sites or crossing roads	Stay alert; reduce speed; maintain safe distance; do not feed wildlife.	
ALL	Fatigue	Be alert for signs of fatigue and take breaks as necessary.	
ALL	Complacency	Having the same assignment on the same day can lead to complacency and make us more vulnerable to accidents.	
ALL	Demob	Operators perform thorough pre-trip inspection prior to demob. Take breaks as needed.	
<div style="display: flex; justify-content: space-between;"> <div> 8. Prepared by (Safety Officer): Name: David Perez </div> <div> Signature:  </div> </div> <div style="display: flex; justify-content: space-between; margin-top: 10px;"> <div> Prepared by (Operations Section Chief): Name: </div> <div> Signature: </div> </div>			
ICS 215A		Date/Time: 11/16/2025	

ICS 205 - INCIDENT RADIO COMMUNICATIONS PLAN

CONTROLLED UNCLASSIFIED
INFORMATION//BASIC

1. Incident Name: PACK		2. Date/Time Prepared Date: 11/15/2025 Time: 1930		3. Operational Period: Date From: 11/16/25 Time From: 0700		Date To: 11/17/25 Time To: 0700			
Incident Channels									
4. Communications									
Ch#	Function	Name	Assigned To	Rx Freq	Rx Tone	Tx Freq	Tx Tone	Mode	Notes
1	COMMAND	FS INF N	ALL DIVS	173.8000	0.0	165.0125	(T3) 131.8	A	INF NORTH FOREST NET TONE 3
2									
3	TACTICAL	R5 T4	DIV A	166.5500	0.0	166.5500	0.0	A	
4	TACTICAL	R5 T7	DIV Z	167.9625	0.0	167.9625	0.0	A	
5	TACTICAL	CDF T3	UNASSIGNED	151.1750	(T16) 192.8	151.1750	(T16) 192.8	A	
6	TACTICAL	R5 T5	DIV M	167.1125	0.0	167.1125	0.0	A	
7	TACTICAL	R5 T6	UNASSIGNED	168.2375	0.0	168.2375	0.0	A	
8									
9									
10									
11									
12									
13									
14									
15	TACTICAL	CALCORD	ALL DIVS	156.0750	(T6) 156.7	156.0750	(T6) 156.7	A	MEDICAL COORDINATION
16	EMERGENCY	AIRGUARD	ALL DIVS	168.6250	0.0	168.6250	(T1) 110.9	A	EMERGENCY
5. Special Instructions									
6. Prepared by (Communications Unit Leader): Name: Ken Parker 951-217-4482								Signature: 	
ICS 205 - CONTROLLED UNCLASSIFIED INFORMATION//BASIC				NIMS IAP		Date/Time: 11/15/25		1930	

MEDICAL PLAN ICS-206	1. INCIDENT NAME PACK CA-INF-002630	2. DATE PREPARED 11/15/25	3. TIME PREPARED 1700	4. OPERATIONAL PERIOD 0700-0700 11/16/25-11/17/25
--------------------------------	--	----------------------------------	------------------------------	---

5. INCIDENT MEDICAL AID STATIONS				
MEDICAL AID STATIONS	LOCATION	Service Level		
		ALS	BLS	
Fire Department Ambulance	Request via OVCC 760 873-2488	ALS		
Mono County EMS	June Lake Station	ALS		

6. TRANSPORTATION				
A. Air Ambulances				
NAME	ADDRESS/PHONE	CONTACT	Service Level	
			ALS	BLS
CHP Air Ambulance Fresno, CA-24 Hr Hoist	(559) 488-4121	CMD Channel	ALS	
Care Flight Gardnerville, NV	(775) 856-9111	CMD Channel	ALS	
Mercy Air Mojave, CA	(800) 222-3456	CMD Channel	ALS	
B. Ground Ambulances				
Inyo/Mono County	As assigned by OVCC 760 873-2488	CMD Channel	ALS	

7. HOSPITALS								
NAME	ADDRESS	TRAVEL TIME		PHONE	HELIPAD		BURN CENTER	
		AIR	GRND		YES	NO	YES	NO
Mammoth Hospital ER	85 Sierra Park Rd Mammoth, CA 37° 38.64' N 118° 57.81' W		20 min	(760) 934-3311		XX		XX
UC Davis Medical Center	2315 Stockton Blvd Sacramento 38° 33.05' N 121° 27.01' W	90 min	4 hrs	(916) 734-2011	XX		XX	
Renown Reno Medical Center Level 2 Trauma	1155 Mill St Reno, NV 39° 31.56' N 119° 47.77' W	75 min	3 hrs	(775) 982-4100	XX		XX	
Community Regional Medical Level 1 Trauma	2823 Fresno St. Fresno, CA 37° 22.41' N 118° 23.97' W	120min	5 hrs	(559) 459-6000	XX			XX

8. MEDICAL EMERGENCY PROCEDURES	
<p style="text-align: center;">EMERGENCY & INCIDENT WITHIN INCIDENT (IWI) FLOW CHART</p> <p style="text-align: center; font-size: small;">**AN EMERGENCY WILL ONLY BE DECLARED AS AN IWI BY THE INCIDENT COMMANDER, OPERATIONS SECTION CHIEF OR THEIR DESIGNEE**</p> <div style="border: 1px solid black; padding: 5px; margin-bottom: 5px; text-align: center;"> COMMUNICATIONS/ECC IS NOTIFIED OF AN "EMERGENCY" FROM A DIVISION/BRANCH </div> <div style="text-align: center;">↓</div> <div style="border: 1px solid black; padding: 5px; margin-bottom: 5px; text-align: center;"> THE COMMAND NET WILL BE CLEARED FOR THE "EMERGENCY" TRAFFIC & 20 MINUTE TIMER IS STARTED (AS DEEMED NECESSARY) </div> <div style="text-align: center;">↓</div> <div style="border: 1px solid black; padding: 5px; margin-bottom: 5px; text-align: center;"> POSITIVE CONTACT IS MADE WITH THE INCIDENT COMMANDER, OPERATIONS SECTION CHIEF, OR DESIGNEE TO ENSURE "EMERGENCY" WAS HEARD </div> <div style="text-align: center;">↓</div> <div style="border: 1px solid black; padding: 5px; margin-bottom: 5px; text-align: center;"> THE IC, OPERATIONS SECTION CHIEF OR DESIGNEE DECLARED AN "IWI" </div> <div style="display: flex; justify-content: space-between;"> <div style="width: 45%;"> <p style="text-align: center; font-size: small;">NO</p> <div style="border: 1px solid black; padding: 5px; text-align: center; font-size: small;"> THE "EMERGENCY" WILL BE HANDLED AT THE DIVISION OR BRANCH LEVEL WITH THE POINT OF CONTACT </div> </div> <div style="width: 45%;"> <p style="text-align: center; font-size: small;">YES</p> <div style="border: 1px solid black; padding: 5px; text-align: center; font-size: small;"> THE IC, OPERATIONS SECTION CHIEF, OR DESIGNEE WILL: • ASSIGN AN "IWI" IC • ANNOUNCE THE "IWI" OVER THE COMMAND NET THE IWI IC WILL GO DIRECT FOR ANY RESOURCES NEEDED TO MITIGATE THE INCIDENT </div> </div> </div> <p style="margin-top: 20px;">CAMP EMERGENCY---Contact Communications with patient complaint/condition and location. Medical Staff will respond to stabilize incident.</p>	<p style="text-align: center;"><u>INJURY REPORTING PROCEDURES</u></p> <p>NATURE OF INJURY _____</p> <p>LOCATION OF PATIENT _____</p> <p>TRANSPORTATION REQUESTED BY: AIR__ GROUND__</p> <p>POINT OF PICKUP _____</p> <p>LAT _____ LONG _____</p> <p>PATIENT UNIT ID _____</p> <p style="text-align: right; font-size: small;">REMEMBER: DO NOT GIVE PT NAME OVER RADIO</p> <p>IS AN EMT WITH PATIENT: YES ____ NO ____</p> <p>AGE _____</p> <p>SEX: MALE ____ FEMALE ____</p> <p style="margin-top: 20px;">ALL EMERGENCIES---Secure the area and identify witnesses for later investigation. Keep an accurate log of events.</p> <p style="text-align: right; font-size: small;">Communications-(760) 873-2488</p>

ICS 206 8-78	9. PREPARED BY (MEDICAL UNIT LEADER) Josh Clark MEDL 951 551-2528	10. REVIEWED BY (SAFETY OFFICER) Barry Owens SOF1
--------------	--	--

FINANCE SECTION MESSAGE



FINANCE SECTION is located in the first trailer on trailer row.

CAL FIRE TIME UNIT (Personnel and Hired Equipment)

- **CAL FIRE PERSONNEL** – make sure you have started your eFC-33's and update after each shift. Please make sure Epay schedules are up to date.
- **HIRED EQUIPMENT SUPPLIERS** – Check in with the Time Unit and drop off your agreements.

FEDERAL TIME (Personnel and Hired Equipment)

- Please email your CTRs and crew manifests daily to Kim_Linse@firenet.gov

DIVISION / GROUP - LINE SUPERVISORS

- Please complete your hired equipment e-shift tickets at the end of each shift.

COMP / CLAIMS

- **Damage Claims (suppression, property, vehicle):**
 - ICS-213. We will need location, description of damage, and your contact information. Drop off at Finance.
- **Injuries:** no matter how minor, please come see us in the Finance trailer, we will have a computer set up for IAPS.

CAL OES REPRESENTATIVE

- Located in OES Command Unit on trailer row.

**Jack Franklin - FSC
Cody Wright - FSC3
Cora Maga-Lafaele - TIME
Tim Myers – PROC
Jennifer Combs - COST**

Pack Fire Suppression Repair Plan

2025-CA-INF-002630

November 15, 2025

This plan provides direction for rehabilitating and repairing impacts from suppression efforts on the Pack Fire (CA-INF-002630). All rehab and repair work will be coordinated with Operations, implemented under guidance of Resource Advisors, and completed when tactically appropriate.

GENERAL GUIDELINES

- Avoid areas marked off with orange/black or orange/white candy stripe flagging. Consult with READ/REAF.
- Remove all flagging and pick up all trash.
- Backhaul all fire equipment, tools, and supplies.
- Repair handline and dozer line as described below.
- Repair all constructed staging areas, safety zones, drop points, helispots, or sling spots following the guidelines below.
- Repair any roads damaged by suppression traffic.
- Report any property damage, cultural resource discoveries or hazardous spills to a READ or REAF.

Any Constructed Staging Areas, Drop Points, Safety Zones, Helispots, and Sling Spots:

- Pull back any berms, recontour, sweep out, and naturalize the disturbed area.
- Scatter any cut brush and slash back over the area (if available).
- Inspect site for gas or oil spills and remove contaminated soil in plastic garbage bag, double bag. Dispose of in dumpster.

Dozer Line:

- Knock down berms, pull soil and rocks back onto the line and smooth out to original contour.
- Ensure that rocks, root wads, and uprooted plants (where available) are well distributed across the line to provide roughness, interrupt water flow, and provide a natural appearance
- If dozer lines cross intermittent or perennial drainages, remove any cut or uprooted vegetation and re-contour/naturalize channel path to restore flow.
- Disguise dozer lines least 30' in from all road and trail intersections and block so that it cannot be accessed by vehicles and turn into a road or UTV trail.

Hand Lines:

Repair handlines that might divert water, or that connect to a road or a trail and need to be disguised at least 30' in. Where repair is needed:

- Pull back any berms and re-contour as appropriate.
- Scatter available slash and woody material to naturalize and disguise.
- Where fireline crosses intermittent or perennial drainages, remove any cut vegetation in the channel and riparian area and re-contour/naturalize stream course to restore flow.

Fences and Other Infrastructure:

- Repair fences, culverts, or other infrastructure that was damaged by suppression actions as identified in Field Maps. As of 11/15, there are only two repair points (cut fences). Both are on federal lands.

ADDITIONAL ACTIONS BY DIVISION

Refer to Field Maps for repair locations.

DIV A:

- On dozer line in Division A, install small water bars as appropriate on slopes greater than 20%. Waterbars should be 12-18" from bottom of drain to top of berm and spaced roughly 100 feet apart. Outlet below waterbar drain needs to extend beyond the edge of the dozer line and be free of obstructions. Hand work.

DIV M:

- Repair dozer lines. Recontour as appropriate and pull back any available rocks and vegetation root wads. Thoroughly disguise and block dozer lines where they intercept 395 so that vehicles cannot access it and turn it into a road or UTV trail. Hand work.

DIV Z:

- Block access where dozer line crosses Crowley Lake Drive and powerline. Disguise by pulling soil/material from surrounding area to blend in. Hand work.
- Chip slash piles identified in Field Maps. Spread chips to depth less than 4". Neatly stack rounds for firewood.



PUBLIC INFORMATION SECTION



Incident Information:

Status	
Incident Start Date: 11/13/2025	Incident Start Time: 11:15 A.M.
Total acres:	Containment:
Cause:	Total Personnel:

MEDIA

California State Penal Code Section 409.5(d) allows the news media to enter scenes of disaster, riot, or civil disturbance. Correctly identified news media members should not be restricted from entering locations specified within the code. However, this does not include crime scenes or private property and does not imply that the news media may interfere with incident operations while in the areas of concern. More information can be found by following the QR code.



PHOTOGRAPHS AND VIDEOS OF THE INCIDENT

The Public Information Office would like copies of the video and pictures you safely took while not in an emergency, fire suppression activity, or overhead assignment. Bring your video and pictures to the Public Information trailer or the QR code, they will be reviewed and possibly uploaded to our many CAL FIRE social media sites. Remember, we don't want photographs or videos that depict unsafe, unprofessional, or embarrassing circumstances, which are a severe breach of ethics.



LOST AND FOUND

The Information Section will manage lost and found items for the incident. Please bring any items found on the Fireline or at basecamp to the Public Information Trailer, and we will work to reunite the item with the owner.

Pack Fire Ground Support

Ground support / Demob Inspections

***2781 S Round Valley Rd
Bishop, CA 93514***

Incident Repairs

***2781 S Round Valley Rd
Bishop, CA 93514***

EQPM Ken Gorecki: (951) 315-4973

GLSU Jeremy Christofferson: (951) 287-0886

10:00 p.m. to 6:00 a.m. repair contact number: (951) 315-4973

No available fuel at the ICP

Fuel available at local cardlock locations

Chevron

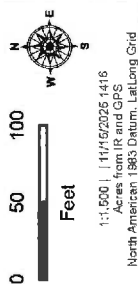
***2392 N Sierra Hwy
Bishop, CA 93514***

Shell

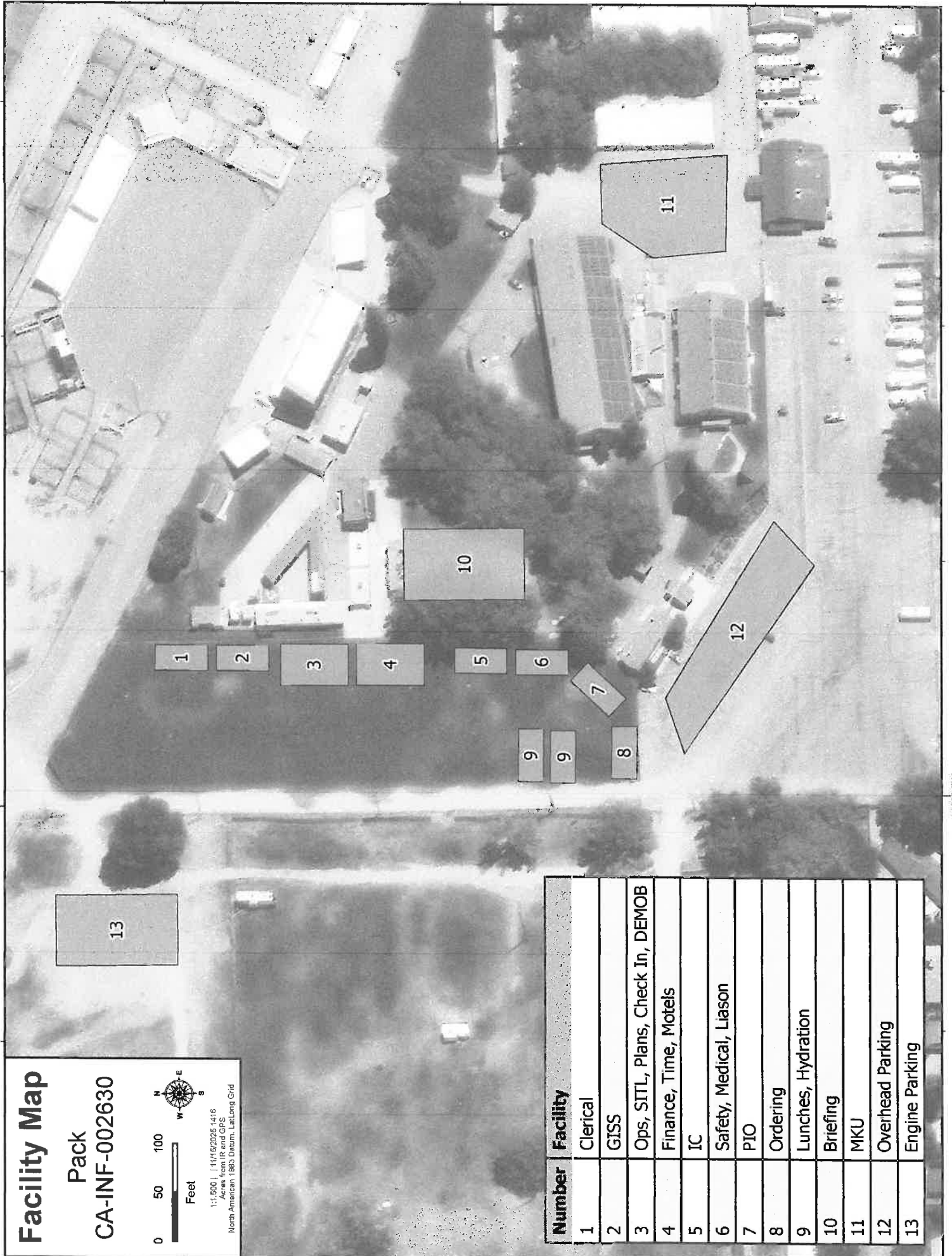
***1290 N Main Street
Bishop, CA 93514***

Facility Map

Pack
CA-INF-002630



Number	Facility
1	Clerical
2	GISS
3	Ops, SITL, Plans, Check In, DEMOB
4	Finance, Time, Motels
5	IC
6	Safety, Medical, Liason
7	PIO
8	Ordering
9	Lunches, Hydration
10	Briefing
11	MKU
12	Overhead Parking
13	Engine Parking



UNIT LOG (ICS 214)		
1. Incident Name: PACK		2. Operational Period: Date From: 11/16/25 Date To: 11/17/25 Time From: 0700 Time To: 0700
3. Unit Name/Designators		4. Unit Leader (Name and ICS Position)
5. Personnel Assigned/Designators		
NAME	ICS POSITION	HOME BASE
6. Activity Log (Continue on Reverse)		
TIME	MAJOR EVENTS	
7. Prepared By:		
		Date/Time:

NIMS IA

[illegible]