

INCIDENT ACTION PLAN BOONE INCIDENT

CA-FKU-019190

Sunday



OPERATIONAL PERIOD

9/8/2024 0700

to

9/9/2024 0700



INCIDENT OBJECTIVES (ICS 202)

1. Incident Name: <p style="text-align: center; margin-top: 10px;">BOONE</p>	2. Operational Period: <table style="width: 100%; border: none;"> <tr> <td style="width: 20%;">Date From:</td> <td style="width: 20%;">9/8/2024</td> <td style="width: 20%;">Date To:</td> <td style="width: 20%;">9/9/2024</td> </tr> <tr> <td>Time From:</td> <td>0700</td> <td>Time To:</td> <td>0700</td> </tr> </table>	Date From:	9/8/2024	Date To:	9/9/2024	Time From:	0700	Time To:	0700
Date From:	9/8/2024	Date To:	9/9/2024						
Time From:	0700	Time To:	0700						

3. Objective(s):

Management Objectives

- Provide for emergency personnel and public safety at all times.
- Protect property, infrastructure, and values at risk.
- Ensure coordinated, timely and accurate release of public information.
- Foster and maintain relationships with all cooperators and stakeholders.
- Protect economic, natural, cultural and heritage resources.
- Maintain fiscal accountability and keep costs commensurate with values at risk.

Control Objectives

- Keep the fire North of the Monterey County Line
- Keep the fire South of Roach Canyon and Adobe Flat
- Keep the fire East of Priest Valley
- Keep the fire West of Parsons Road

General Situational Awareness:

Steep and rugged terrain, critically dry and receptive fuel beds, active area for fire history, asbestos fields and valley fever.

5. Site Safety Plan Required? Yes No

Approved Site Safety Plan(s) Located at:

6. Incident Action Plan

<input checked="" type="checkbox"/> ICS 203	<input checked="" type="checkbox"/> ICS 215A	<input type="checkbox"/> ICS 205 A	<input type="checkbox"/>
<input checked="" type="checkbox"/> ICS 204	<input checked="" type="checkbox"/> ICS 220	<input checked="" type="checkbox"/> Training Message	<input type="checkbox"/>
<input checked="" type="checkbox"/> ICS 205	<input checked="" type="checkbox"/> Base Camp Map	<input type="checkbox"/> Travel Map	<input type="checkbox"/>
<input checked="" type="checkbox"/> ICS 206	<input checked="" type="checkbox"/> Weather Forecast	<input type="checkbox"/> Demob Plan	<input type="checkbox"/>
<input checked="" type="checkbox"/> ICS 208	<input checked="" type="checkbox"/> Fire Behavior	<input checked="" type="checkbox"/> Finance Message	<input checked="" type="checkbox"/> ICS 214

7. Prepared By: K. O'Neil	Position/Title: PSC	Signature:
8. Approved by Incident Commander:	B. Carter	Signature:

DD8A9EC12224475... NIMS IAP

ORGANIZATION ASSIGNMENT LIST (ICS 203)

1. Incident Name: BOONE		2. Operational Period: Date From: 9/8/2024		Date To: 9/9/2024	
		Time From: 0700		Time To: 0700	
3. Incident Commander(s) and Command Staff:			7. Operation Section:		
IC/UC's	B. Carter / J. Macomb (T)		Operations	L. Haack	
Deputy	B. Mackwood / M. Ryan		Deputy Operations	A. Ahmad / R. Valles (T)	
Safety Officer	R. Danielsen / N. La Russo		Night Ops	L. Monsen	
Information Officer	T. Shoots / C. Castillo		Staging Area		
Liaison Officer	C. Thompson / J. Windham		Branch	III	T. Craig / K. Mancebo (T)
4. Agency/Organization Representatives:			Division/Group	A	R. Tucker / S. Watkins (T)
Agency/Organization	Name		Division/Group	H	M. Mason (T)
CAL FIRE-FKU	D. Hale		Division/Group	K	R. Peterson / B. Barlett (T)
CAL OES	V. Arroyo		Division/Group		
CDCR	T. Presson		Division/Group		
PG&E	C. Jordan		Branch	IX	G. Trull
BLM	G. Keegan		Division/Group	O	B. Lowry
CHP	J. Beeson		Division/Group	R	H. Pitt / B. Powell (T)
Fresno County SO	A. Maldonado		Division/Group	Z	J. Detmer / B. Meadows (T)
CAL TRANS	B. Torres		Division/Group		
CCC	L. Owens		Division/Group		
FCO EH	G. Gomez		Branch	Contingency	M. Bontrager (12hr)
MCSO	J. Smith		Division/Group	Contingency	D. Schmidt / L. French (T)
SBSO	E. Taylor		Division/Group		
Coalinga PD	S. Young		Division/Group		
Red Cross	B. Slotter		Division/Group		
			Division/Group		
			Branch		
			Division/Group	FSR	J. Fitch (12hr) / N. Kent (12hr) (T)
5. Planning Section:			Division/Group	ROADS	P. Leuzinger (12hr)
Chief	R. Noon / K. O'Neil (T)		Division/Group		
Deputy	J. Clark		Division/Group		
Resource Unit	G. Padilla / L. Pasero / C. Borello (T) J. Nehring (T)		Division/Group		
Situation Unit	D. Campbell / S. Atchison (T)		Branch		
Documentation Unit	R. Calin		Division/Group		
Demobilization Unit	C. Tyler		Division/Group		
GISS	F. Postler		Division/Group		
FBAN	R. Clark / J. Magana (T)		Division/Group		
IMET	C. White		Division/Group		
Training Tech Spec	C. Soiza / J. Cernansky (T)		Air Operations Branch		Director: B. Vance
			Air Support Group Supervisor		E. Johnson / C. Clower
			Air Tactical Group Supervisor		A. Sanchez
6. Logistics Section			Helibase Manager		
Chief	M. Ferguson / J. Guerra		D. Bosia		
Supply Unit	C. Bonner		8. Finance/Administration Section:		
Facilities Unit	B. Smutney		Chief	M. Patton / C. Nerey (T)	
Ground Support Unit	K. Coulston		Time Unit	M. McConnell	
Communications Unit	B. Rapp		Procurement Unit	M. White	
Medical Unit	J. Clarke		Comp/Claims Unit	M. Janssen	
Prepared By: Name: K. O'Neil		Position/Title: PSC		Signature: 	
ICS 203		Date/Time: 9/7/2024 2300 hours			



Fire Weather Forecast



FORECAST NO: 3
PREDICTION FOR: Sunday - Monday
DATE: September 8th, 2024
FORECAST ISSUED: 1900 September 7th, 2024

FIRE: Boone Fire
UNIT: CA-FKU
IMET: James White (707-296-1635)
SIGNED: *James White*

WEATHER DISCUSSION: * Valleys = 2000 ft (Los Gatos Rd), Ridgetop = 3500 ft (Bald Mtn / Juniper Ridge) *
 Hot and dry conditions will continue through Monday with highs grazing near 100 and minimum RH in the low teens. Very poor RH recoveries will keep conditions enhanced overnight except in low valleys such as along Los Gatos Road which sees strong cold air pooling and stronger recoveries up to 50 percent. Wind will remain out of the southwest through Monday. Winds will be generally gentle on Sunday but increase again on Monday with gusts up to 25 mph in exposed areas. Enhanced instability will also increase winds and fire danger each afternoon through Monday.

SUNDAY:

WEATHER: Smoke quickly lifting. Few clouds in the afternoon.
MAX TEMP: Valleys: 94-98°F (1-3°F ↓) 3PM RH: Valleys: 10-16% (Little Change)
 Ridgetops: 92-96°F (1-3°F ↓) Ridgetops: 12-18% (Little Change)
CHC WTG RAIN: 0% **CHC THUNDER:** 0% **INSTABILITY:** High

WINDS: Valleys: Upslope 1-3 mph, afternoon west 3-6 mph, gusts to 15 mph.
 (20 feet) Ridgetops: Upslope 2-5 mph, afternoon west 6-10 mph, gusts to 18 mph.

MIXING HEIGHT: Rising to 7,000 ft by 1300. **TRANSPORT WIND:** Southwest 8-12 mph.

SUNDAY NIGHT:

WEATHER: Few clouds.
MIN TEMP: Valleys: 66-72°F (Little Change) 3AM RH: Valleys: 28-38% (Little Change)
 Ridgetops: 75-79°F (Little Change) Ridgetops: 16-22% (1-3% ↓)
CHC WTG RAIN: 0% **CHC THUNDER:** 0% **INSTABILITY:** Low

WINDS: Valleys: Northwest 3-6 mph, strongest just after sunset.
 (20 FEET) Ridgetops: Northwest 3-6 mph.

MIXING HEIGHT: Dropping to 300 ft by 2300. **TRANSPORT WIND:** Northwest 4-8 mph.

MONDAY:

WEATHER: Few clouds in the afternoon.
MAX TEMP: Valleys: 93-97°F (1-3°F ↓) 3PM RH: Valleys: 10-16% (Little Change)
 Ridgetops: 91-95°F (1-3°F ↓) Ridgetops: 12-18% (Little Change)
CHC WTG RAIN: 0% **CHC THUNDER:** 0% **INSTABILITY:** Medium

WINDS: Valleys: Upslope 2-4 mph, afternoon southwest 5-10 mph, gusts to 16 mph.
 (20 feet) Ridgetops: Southwest 3-6 mph, afternoon southwest 10-14 mph, gusts to 24 mph.

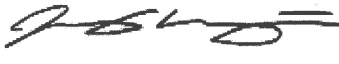

MIXING HEIGHT: Rising to 6,000 ft by 1300. **TRANSPORT WIND:** Southwest 10-15 mph.

EXTENDED OUTLOOK: High pressure will push east through early week, allowing for fire weather conditions to gradually ease. Highs will drop back into the 80s with minimum RH above 20% by Tuesday. Winds will remain moderate out of the south and west. A cold front crossing the area around Wednesday will enhance and turn winds northwest, gusting 30 to 40 mph alongside highs dropping back into the upper 80s and minimum RH as high as 30%. There is wide disagreement in terms of exact magnitude but essentially all models show cooling and moistening through the week.

→ Nearby Weather Observations



FIRE BEHAVIOR FORECAST

FORECAST NUMBER: 4	TYPE OF FIRE: WILDLAND FIRE
FIRE NAME: BOONE CA-FKU-019190	OPERATIONAL PERIOD: 9/8-9/09/2024 (0700-0700)
DATE ISSUED: 09/07/2024	TIME ISSUED: 2000
UNIT: FRESNO-KINGS UNIT	 SIGNED:  Typed/printed: James Magana FBAN(t)

INPUTS

WEATHER SUMMARY: Hot and dry conditions will continue through Monday with highs grazing near 100 and minimum RH in the low teens. Very poor RH recoveries will keep conditions enhanced overnight except in low valleys such as along Los Gatos Road which sees strong cold air pooling and stronger recoveries overnight up to 50 percent. Wind will remain out of the southwest through Monday. Winds will be generally gentle on Sunday but increase again on Monday with gusts up to 25 mph in exposed areas. Enhanced instability will also increase winds and fire danger each afternoon through Monday.

DAY: Max Temp 94-98°F **Min RH:** 10-18%

20' WIND VALLEY: Upslope 1-3 mph, becoming West 3-6 mph, gusts to 15 mph in the afternoon

20' WIND RIDGETOP: Upslope 2-5 mph, becoming West 6-10 mph, gusts to 18 mph in the afternoon

NIGHT: Min Temp 66-79°F **Max RH:** 16-38%

20' WIND VALLEY: Northwest 3-6 mph, strongest just after sunset.

20' WIND RIDGETOP: Northwest 3-6 mph

Review the weather forecast for specific details

FIRE BEHAVIOR

GENERAL: Fuels adjacent to the fire perimeter as well as within the TFR remain available as there is an above average loading of fine dead fuels. Any spot fire, slopovers, or new starts could experience Moderate to Dangerous rates of spread. Backing and creeping fire has been observed. Where there are isolated pockets of heat ground fuels will continue to be consumed. Heavy down fuels will retain heat and continue to smolder. Expect an increase in rates of spread as wind speed increases.

FUEL MODEL	RATE OF SPREAD FT/MIN	FLAME LENGTH FT	SPOTTING DISTANCE	PROBABILITY OF IGNITION
Grass	60-110	8-12	0.1 mi	92%
Grass/Shrub	15-37	4-6	0.2 mi	92%

SPECIFIC:

BRANCH III: Steep terrain provides an environment where rolling material can ignite readily available fuels below. Readily available ground fuels will continue to be consumed.

BRANCH IX: Large dead and down fuels retain heat and will continue to smolder. Be alert for any ember sources near the fire's edge as West winds will be strongest in the afternoon.

FIRE SUPPRESSION REPAIR: Elevated PIG coupled with receptive fuels provide potential for unplanned ignitions. Be alert of your work area and plan appropriately.

Forecast is valid for areas within 5 miles of fire perimeter

AIR OPERATIONS: **Sunset:** 19:19 **Sunrise:** 06:38
Mixing height 7,000' AGL in the afternoon.

SAFETY

- Be alert when working near fire weakened trees as the situation can change without warning.
- Be alert for deep seated heat in stump holes where heavy down material has been smoldering.
- Resources working in light flashy fuel should have a plan for an unplanned ignition.

Fuels and Fire Behavior Advisory

California Wide

September 3, 2024 – September 16, 2024



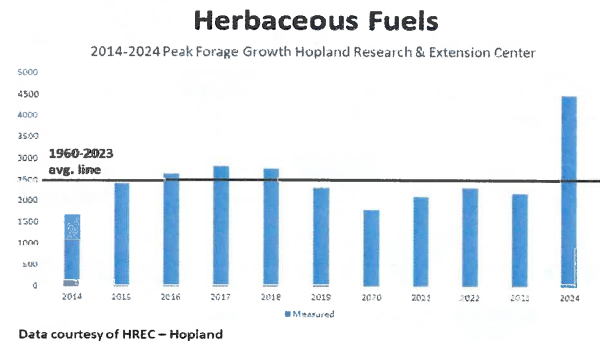
Subject: Herbaceous fuel loads are above to well above average across most of California's grass-dominated systems, including typically arid deserts and valleys that often do not support fire growth.

Discussion: Precipitation and temperature alignments throughout the winter and spring of 2024 have resulted in an above average load of herbaceous fuels across many grass-dominated systems throughout California. The above normal grass and herbaceous load creates a continuous fuel bed, allowing for rapid spread of fires when these fuels are cured. The continuous nature of the herbaceous fuel bed is enhanced by remnant thatch resulting from herbaceous growth during the abnormally wet late summer and fall of 2023 and multiple consecutive years of above average herbaceous growth.

The combination of heavy herbaceous fuels with seasonably available dead woody and live fuels results in a highly flammable fire environment where rapid fire growth has been observed and is expected to continue for initial attack fires.

Difference from normal conditions:

Herbaceous fuel loadings in the California Coast Ranges, Sierra Foothills, and areas east of the Sierra Crest range from 120% to as much as 198% of normal. These fuels are fully cured at all elevations and across all PSAs in California where herbaceous fuels dominate the fire environment.



Concerns to Firefighters and the Public:

- Continuous and above normal fuel loading lowers the wind speed threshold needed to initiate rapid spread of fires during initial attack. Under what are typically low to moderate wind speeds, rates of spread and flame lengths are likely to exceed direct attack capabilities.
- Areas that typically resist fire spread, such as grazed areas and arid / semi-arid high valleys and deserts, may not slow fire growth or reduce fire behavior as expected.
- Heavy and continuous cured herbaceous fuels are highly available and may serve as catalysts for rapid fire spread in brush and timber fuel types.

Mitigation Measures:

- Modify tactics to account for expected rapid rates of spread and long-range spotting potential.
- Brief all resources on these conditions, especially out-of-area resources unfamiliar with local conditions.
- Consider augmentation of initial attack resources.
- Fire behavior prediction simulations using fuel models GR1 and GR2 are likely to underpredict spread; modification to GR4 or GR7 may be needed to accurately model fire spread in herbaceous fuels.

Area of Concern: Areas where herbaceous fuels dominate the fire environment across all PSAs and at all elevations in California.

Issued By: Predictive Services Units of Northern California and Southern California, in coordination with Cal Fire and Cal OES Fire and Rescue Division.

Fuels and Fire Behavior Advisory

California Wide

September 3, 2024 – September 16, 2024





CAL FIRE INCIDENT MANAGEMENT TEAM 2

1. INCIDENT NAME:	2. DATE PREPARED:	3. TIME PREPARED:
Boone	September 7, 2024	1800
4. PREPARED BY:	5. LEADER NAME:	6. OPERATIONAL PERIOD:
Nate La Russo SOF1(T)	Ryan Danielsen SOF1	9/8/2024 0700 TO 9/9/2024 0700

SAFETY MESSAGE

Complacency: *“A feeling of quiet pleasure or security, often while unaware of some potential danger or defect.”*

Don't become complacent in your work assignments. The fuel model allows fire behavior to increase rapidly, and a small incident can become a major incident in the blink of an eye.

Situational Awareness to identify, process, and comprehend the critical elements of information about what is happening to the team with regards to the mission. More simply, it's knowing what is going on around you.

HYDRATION

- ✓ **H**ave enough cold water available for the entire shift.
- ✓ **Y**ou are responsible for your daily hydration habits.
- ✓ **D**rink a minimum of one quart of water each hour.
- ✓ **R**emember that nutrition will keep your body healthy.
- ✓ **A**void carbonated and caffeinated beverages.
- ✓ **T**alk to your crew about Heat Illness prevention measures.
- ✓ **E**valuate the work pace based on the day's assignments.

Ash Pit Awareness

- Observe the remnants of the vegetation model.
- Look for depressions in the ground.
- Be aware of potential for stump holes where trees may have burned.
- White ash may be an indicator of an ash pit.
- Ensure that PPE is worn and properly fitted.
- Utilize hoselines and hand tools to thoroughly extinguish hot spots that may threaten control lines.

INCIDENT RISK ANALYSIS

ICS 215A

BR/DV	HAZARDOUS ACTIONS – CONDITIONS	MITIGATIONS – WARNINGS – REMEDIES
ALL	HEAT & DEHYDRATION	<ul style="list-style-type: none"> • Drink water before, during and after shifts. Up to 1 ½ gallons per shift. • Review heat related emergencies (IRPG Pg. 110). • When over 95 degrees, break for a minimum of 10 minutes every two hours. • Seek shade during breaks. In areas of limited shade, utilize vehicles and A/C. • Be alert for signs of heat stress in yourself and others; use the buddy system.
ALL	TRAFFIC HAZARDS AND DRIVING	<ul style="list-style-type: none"> • Take extra precautions when entering or exiting the roadways. • Maintain high visibility when in the operational area and use warning lights when working on roads or traveling in smoke. • Many roads are narrow and mid-slope, with soft shoulders. Allow heavy vehicles to pass on the uphill side. Use spotters when backing or turning around. • Keep your speed down in all areas. Drive at or below posted speed limits. • Use chock blocks and turn wheels into hills.
ALL	STEEP TERRAIN & ROLLING DEBRIS	<ul style="list-style-type: none"> • Maintain 8'-10' spacing when working & walking. • Be mindful of footing and loose debris. Do not work above any personnel. • Evaluate the necessity to send personnel into areas with limited access. • Review and validate emergency plans in steep, remote areas.
ALL	FIRE BEHAVIOR	<ul style="list-style-type: none"> • Monitor weather conditions and forecasts. Make sure all personnel receive a briefing. • Critically low fuel moistures will contribute to rapid fire growth and rates of spread. • Expect spotting in receptive fuel beds adjacent to active burning. • Expect erratic, shifting winds in and around drainages. • Identify escape routes, temporary refuge areas and safety zones.
ALL	VALLEY FEVER	<ul style="list-style-type: none"> • Firefighting activities can generate dust in the air making the fungal spores airborne. • Limit personnel in dusty areas when possible. Consider use of N-95's. • When servicing equipment, stay upwind and use N-95 mask. • Consider wetting soil prior to disturbance, including LZ's, DP's, and dirt roads. • Stay uphill and upwind of soil disturbing activities such as heavy equipment use. • Remove dusty PPE and clothing after shift and launder frequently. Do not store it in vehicle cabs or sleeping areas. Monitor for Valley Fever conditions for 1-3 weeks.
K/H	STRATEGIC/TACTICAL FIRING	<ul style="list-style-type: none"> • Monitor weather conditions and forecasts. Make sure all personnel receive a briefing. • Follow the chain of command when undertaking burning operations. • Ensure that the aerial/ground ignition plans have been well briefed, including LCES and drought-related fire behavior considerations. • Wear and use appropriate PPE. • Initiate burning after ensuring the plan is authorized and understood by all.
ALL	HEAVY EQUIPMENT OPERATIONS/ SUPPRESSION REPAIR	<ul style="list-style-type: none"> • Ensure communications are established with operators. • Use hand signals if other communications are unavailable. • Maintain a 50'-100' exclusion area around equipment. • Use road guards as needed to control traffic. • Stay out of the dust.
A	SERPENTINE SOILS	<ul style="list-style-type: none"> • Avoid areas of serpentine soils that contain naturally occurring asbestos. • Be aware of asbestos exclusion zones identified on maps. • Ensure everyone gets a safety briefing.
H/K/O/R	LINE CONSTRUCTION	<ul style="list-style-type: none"> • Brief all personnel on Valley Fever hazards and prevention methods. • Consider use of existing trails and roads for fire control to avoid dust disturbance activities. • Ensure LCES are in place prior to engagement. Ensure safety zones are adequate. • Use the Downhill Fireline Construction checklist (IRPG pg. 7)
ALL	AIRCRAFT OPERATIONS	<ul style="list-style-type: none"> • Monitor Air-to-Ground frequencies, they are your eyes in the sky. • Use Air-to-Ground frequency to communicate with aircraft. • Use clear, concise statements when directing aircraft; CLEAR THE LINE! • Do not rely on aircraft: visibility & priorities can change quickly. • Only utilize aircraft to insert personnel on the line when necessary. • Be aware of rotor wash when working near helicopters. • Ensure all personnel have received a safety briefing. • Ensure all PPE is utilized and secured.
ALL	NIGHT OPERATIONS	<ul style="list-style-type: none"> • Maintain high visibility in the work area and wear vest while in roadway. • Use glow sticks to mark hazards. • Ensure personnel have a personal light (headlamp). • Watch for signs of fatigue. • Take breaks away from areas of known hazards.
ALL	MOP-UP AND PATROL	<ul style="list-style-type: none"> • Balance the risk of exposure to hazards against the mop-up objective. • Evaluate areas for hazard trees and locate stump holes for avoidance. • Review and follow "Look Up, Look Down, Look Around" procedures. • Evaluate mop-up distances against what is safe and necessary.
<p>INCIDENT NAME: BOONE INCIDENT</p>		<p>OPERATIONAL PERIOD: 0700 – 0700 SEPTEMBER 8-9, 2024 Date/Time Prepared: 09/07/24 – 1500</p> <p>Prepared by R. Danielsen CAL FIRE IMT2</p>

ASSIGNMENT LIST (ICS 204 WF)

CONTROLLED UNCLASSIFIED
INFORMATION//BASIC

1. Incident Name: <p style="text-align: center; font-size: 1.2em;">BOONE</p>	2. Operational Period: Date From: 09/08/24 Date To: 09/09/24 Time From: 0700 Time To: 0700	3. Branch Division <p style="text-align: center; font-size: 1.5em;">III A</p> <p style="text-align: center;">Page 1 of 1 Alpha</p>
---	---	--

4. Operations Personnel:			
Operations Section Chief: L. Haack	Night Ops: L. Monsen		
Branch Director: T. Craig / K. Mancebo (T)	Branch Safety: C. Rutherglen / B. Diregolo / T. Day (T) / B. Lahiff (T)		
Division/Group Supervisor: R. Tucker / S. Watkins (T)	Air Attack: A. Sanchez		

5. Resources Assigned:		** Resources Below in Bold are 12 Hour **					
Resource Identifier	ALS	LWD	Leader	Personnel	Request #	Hours	Reporting Location
STC ORC 9328C	X		A. ESPINOSA	22	E-29	0700-0700	HWY 198 / Boone Ln.
ENG3 FKU 4363			N. MCGRATH	3	E-297	0700-0700	HWY 198 / Boone Ln.
ENG3 XFR 5306			J. CHICOINE	3	E-294	0700-0700	HWY 198 / Boone Ln.
W/T PVT E-16 A&G Pump			J. STEPHENSON	2	E-16	0700-0700	HWY 198 / Boone Ln.
W/T PVT E-17 Kritz Trucking			B. ANDERSON	2	E-17	0700-0700	HWY 198 / Boone Ln.

6. Work Assignments:
 Mop up 300' interior.
 Backhaul trash/hose/water.
 Tactical patrol.

7. Special Instructions:
 REMS WCV O-202 BRANCH III

8. Communications								
Name	Ch	Function	Rx Freq	Rx Tone	Tx Freq	Tx Tone	Mode	Notes
C2 T7	1	COMMAND	151.2650	(T8) 103.5	159.3300	(T7) 167.9	A	CDF C2 TONE 7
CDF T27	7	TACTICAL	159.2925	(T17) 67.0	159.2925	(T17) 67.0	A	
CDF A/G8	14	A/G TAC	159.3450	(T16) 192.8	159.3450	(T16) 192.8	A	A/G TACTICAL
CALCORD	15	MEDICAL	156.0750	(T6) 156.7	156.0750	(T6) 156.7	A	
AIRGUARD	16	EMERGENCY	168.6250	0.0	168.6250	(T1) 110.9	A	

9. Prepared by: Name: J. Nehring **RESL**

Signature:

ICS 204 Date/Time: 9/7/2024 2200 Personnel Count: 32

ASSIGNMENT LIST (ICS 204 WF)

CONTROLLED UNCLASSIFIED
INFORMATION//BASIC

1. Incident Name:	2. Operational Period:	3. Branch	Division
BOONE	Date From: 09/08/24 Date To: 09/09/24 Time From: 0700 Time To: 0700	III	H
4. Operations Personnel:		Page 1 of 1	Hotel

Operations Section Chief: L. Haack	Night Ops: L. Monsen
Branch Director: T. Craig / K. Mancebo (T)	Branch Safety: C. Rutherglen / B. Diregolo / T. Day (T) / B. Lahiff (T)
Division/Group Supervisor: M. Mason (T)	Air Attack: A. Sanchez

5. Resources Assigned:		** Resources Below in Bold are 12 Hour **					
Resource Identifier	ALS	LWD	Leader	Personnel	Request #	Hours	Reporting Location
STC SDU 9332C			C. RESNICK	16	E-76	0700-0700	DP 5
STC XBO 6231C	X		S. SOLIS	17	E-123	0700-0700	DP 5
CRW2 TBD						0700-0700	DP 5
W/T PVT E-18 Kritz Trucking			H. HERNANDEZ	2	E-18	0700-0700	DP 5
W/T PVT E-19 Kroker			J. MENDOZA	2	E-19	0700-0700	DP 5

6. Work Assignments:
 Hold fire within current lines.
 Mop up 200' interior.
 Backhaul trash/hose/water.
 Tactical patrol.

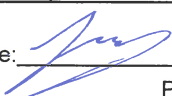
7. Special Instructions:
 REMS WCV O-202 BRANCH III

8. Communications								
Name	Ch	Function	Rx Freq	Rx Tone	Tx Freq	Tx Tone	Mode	Notes
C2 T7	1	COMMAND	151.2650	(T8) 103.5	159.3300	(T7) 167.9	A	CDF C2 TONE 7
CDF T28	8	TACTICAL	159.3075	(T17) 67.0	159.3075	(T17) 67.0	A	
CDF A/G8	14	A/G TAC	159.3450	(T16) 192.8	159.3450	(T16) 192.8	A	A/G TACTICAL
CALCORD	15	MEDICAL	156.0750	(T6) 156.7	156.0750	(T6) 156.7	A	
AIRGUARD	16	EMERGENCY	168.6250	0.0	168.6250	(T1) 110.9	A	

9. Prepared by: Name:	J. Nehring	RESL	Signature:
ICS 204	Date/Time: 9/7/2024	2200	Personnel Count: 37

ASSIGNMENT LIST (ICS 204 WF)

CONTROLLED UNCLASSIFIED
INFORMATION//BASIC

1. Incident Name:		2. Operational Period:				3. Branch		Division	
BOONE		Date From: 09/08/24		Date To: 09/09/24		III		K	
		Time From: 0700		Time To: 0700					
4. Operations Personnel:						Page 1 of 1		Kilo	
Operations Section Chief: L. Haack				Night Ops: L. Monsen					
Branch Director: T. Craig / K. Mancebo (T)				Branch Safety: C. Rutherglen / B. Diregolo / T. Day (T) / B. Lahiff (T)					
Division/Group Supervisor: R. Peterson / B. Barlett (T)				Air Attack: A. Sanchez					
5. Resources Assigned:		** Resources Below in Bold are 12 Hour **							
Resource Identifier	ALS	LWD	Leader	Personnel	Request #	Hours	Reporting Location		
STC HUU 9120C			D. RICKSON	18	E-79	0700-0700	DP 60		
STC OES 2870C			D. WYLIE	22	E-264	0700-0700	DP 60		
STC OES 4821C	X		W. IRVINE	22	E-269	0700-0700	DP 60		
STC XSD 6849C	X		J. FLORES	22	E-267	0700-0700	DP 60		
STG TGU 9257G			T. GILL	33	C-11	0700-0700	DP 60		
STG RRU 9313G (CCC)			E. POTTER	30	C-25	0700-0700	DP 60		
STG SDU 9331G			C. EAVES	33	C-13	0700-0700	DP 60		
STG SDU 9338G			COLEMAN	35	C-12	0700-0700	DP 60		
STG SLU 9344G (CDCR)			J. SMITH	30	C-38	0700-0700	DP 60		
STG BDU 9355G			J. FRANKLIN	36	C-2	0700-0700	DP 60		
STG FKU 9435G (CMD)			B. SIEGERS	37	C-20	0700-0700	DP 60		
STG TCU 9444G (CDCR)			K. HUKKANEN	33	C-9	0700-0700	DP 60		
STL MMU 9428L			J. WILLIAMS	6	E-31	0700-0700	DP 60		
DOZ PVT E-10 Varian			G. VARIAN	2	E-10	0700-0700	DP 60		
DOZ PVT E-23 A&CC			M. SCHMIDT	2	E-23	0700-0700	DP 60		
W/T PVT E-102 Fire Support			G. ROMO	2	E-102	0700-0700	DP 60		
W/T PVT E-104 Valley Farm			S. EDGERLY	2	E-104	0700-0700	DP 60		
W/T PVT E-107 Clovis			J. BOOK	2	E-107	0700-0700	DP 60		
W/T PVT E-108 Clovis			J. BOOK	2	E-108	0700-0700	DP 60		
HEQB Susic			C. SUSIC	1	O-286	0700-0700	DP 60		
FEMP Chambers	X		J. CHAMBERS	1	O-422	0700-0700	DP 60		
FEMT Gutierrez			J. GUTIERREZ	1	O-194	0700-0700	DP 60		
6. Work Assignments:									
Construct line from Bear Cyn. to Robbers Cyn. Hold fire within current lines. Improve and hold control lines. Prepare crews for helicopter shuttle operations.									
7. Special Instructions:									
REMS WCV O-202 BRANCH III									
8. Communications									
Name	Ch	Function	Rx Freq	Rx Tone	Tx Freq	Tx Tone	Mode	Notes	
C2 T7	1	COMMAND	151.2650	(T8) 103.5	159.3300	(T7) 167.9	A	CDF C2 TONE 7	
CDF T31	9	TACTICAL	151.3925	(T17) 67.0	151.3925	(T17) 67.0	A		
CDF A/G8	14	A/G TAC	159.3450	(T16) 192.8	159.3450	(T16) 192.8	A	A/G TACTICAL	
CALCORD	15	MEDICAL	156.0750	(T6) 156.7	156.0750	(T6) 156.7	A		
AIRGUARD	16	EMERGENCY	168.6250	0.0	168.6250	(T1) 110.9	A		
9. Prepared by: Name:		J. Nehring			RESL				
					Signature: 				
ICS 204		Date/Time: 9/7/2024			2200		Personnel Count: 369		

NIMS IAP

CONTROLLED UNCLASSIFIED INFORMATION//BASIC

ASSIGNMENT LIST (ICS 204 WF)

CONTROLLED UNCLASSIFIED
INFORMATION/BASIC

1. Incident Name: <div style="text-align: center; font-weight: bold;">BOONE</div>	2. Operational Period: Date From: 09/08/24 Date To: 09/09/24 Time From: 0700 Time To: 0700	3. Branch Division <div style="text-align: center; font-size: 2em; font-weight: bold;">IX O</div> Page 1 of 1 Oscar
---	---	---

4. Operations Personnel:	
Operations Section Chief: L. Haack	Night Ops: L. Monsen
Branch Director: G. Trull	Branch Safety: S. Gonzales / R. Pope (T)
Division/Group Supervisor: B. Lowry	Air Attack: A. Sanchez

5. Resources Assigned:								** Resources Below in Bold are 12 Hour **							
Resource Identifier	ALS	LWD	Leader	Personnel	Request #	Hours	Reporting Location								
STC SHU 9241C			C. REGINATTO	18	E-81	0700-0700	DP 50								
STC VNC 9326C	X		D. ROBERTSON	22	E-142	0700-0700	DP 50								
STC XSL 1472C			T. HUGHEY	18	E-74	0700-0700	DP 50								
STG BDU 9353G			R. VELASQUEZ	33	C-3	0700-0700	DP 50								
DOZ BEU 4645			M. ABOY	4	E-13	0700-0700	DP 50								
W/T PVT E-95 Frisco Trucking			D. VILLARS	2	E-95	0700-0700	DP 50								
W/T PVT E-100 Twissleman			T. SANTOS	2	E-100	0700-0700	DP 50								
W/T PVT E-101 Pankey			C.PANKEY	2	E-101	0700-0700	DP 50								
W/T PVT E-103 Firestorm			S. GARCIA	2	E-103	0700-0700	DP 50								
W/T PVT E-112 H2O			A. KELLY	2	E-112	0700-0700	DP 50								
FALM PVT O-315 J&A Timber			J. CORCHERO	2	O-315	0700-1900	DP 50								
FEMP Hawk	X		C. HAWK	1	O-421	0700-0700	DP 50								
FEMT Oberg			A. OBERG	1	O-193	0700-0700	DP 50								

6. Work Assignments:
 Fall trees that threaten control lines.
 Mop up 300' interior
 Backhaul trash/hose/water
 Tactical patrol.

7. Special Instructions:

8. Communications								
Name	Ch	Function	Rx Freq	Rx Tone	Tx Freq	Tx Tone	Mode	Notes
C2 T7	1	COMMAND	151.2650	(T8) 103.5	159.3300	(T7) 167.9	A	CDF C2 TONE 7
CDF T38	10	TACTICAL	159.3375	(T17) 67.0	159.3375	(T17) 67.0	A	
CDF A/G8	14	A/G TAC	159.3450	(T16) 192.8	159.3450	(T16) 192.8	A	A/G TACTICAL
CALCORD	15	MEDICAL	156.0750	(T6) 156.7	156.0750	(T6) 156.7	A	
AIRGUARD	16	EMERGENCY	168.6250	0.0	168.6250	(T1) 110.9	A	

9. Prepared by: Name: J. Nehring RESL Signature:

ICS 204 Date/Time: 9/7/2024 2200 Personnel Count: 109

ASSIGNMENT LIST (ICS 204 WF)

CONTROLLED UNCLASSIFIED
INFORMATION//BASIC

1. Incident Name:	2. Operational Period:	3. Branch	Division
BOONE	Date From: 09/08/24 Date To: 09/09/24 Time From: 0700 Time To: 0700	IX	R
4. Operations Personnel:		Page 1 of 1	Romeo

Operations Section Chief: L. Haack	Night Ops: L. Monsen
Branch Director: G. Trull	Branch Safety: S. Gonzales / R. Pope (T)
Division/Group Supervisor: H. Pitt / B. Powell (T)	Air Attack: A. Sanchez

5. Resources Assigned:	** Resources Below in Bold are 12 Hour **						
Resource Identifier	ALS	LWD	Leader	Personnel	Request #	Hours	Reporting Location
STC SDU 9330C			D. PIETRCZAK	18	E-122	0700-0700	DP 30
STC SDU 9331C			B. BRUNO	18	E-32	0700-0700	DP 30
CRW2 TBD						0700-0700	DP 30
CRW2 TBD						0700-0700	DP 30
DOZ PVT E-24 A&CC			A. AVILA	2	E-24	0700-0700	DP 30
DOZ PVT E-84 Smith Livestock			A. DUKE	3	E-84	0700-1900	DP 30
W/T PVT E-21 WCI			D. MITCHELL	2	E-21	0700-0700	DP 30
W/T PVT E-94 Garcia			J. GARCIA	2	E-94	0700-1900	DP 30
W/T PVT E-98 Fireline			R. MOOK	2	E-98	0700-0700	DP 30
W/T PVT E-110 Lundstrom			E. LUNDSTROM	2	E-110	0700-0700	DP 30

6. Work Assignments:
 Fall trees that threaten control lines.
 Improve and hold control lines.
 Mop up 300' interior
 Backhaul trash/hose/water

7. Special Instructions:

8. Communications

Name	Ch	Function	Rx Freq	Rx Tone	Tx Freq	Tx Tone	Mode	Notes
C2 T7	1	COMMAND	151.2650	(T8) 103.5	159.3300	(T7) 167.9	A	CDF C2 TONE 7
VFIRE 25	11	TACTICAL	154.2875	(T6) 156.7	154.2875	(T6) 156.7	A	
CDF A/G8	14	A/G TAC	159.3450	(T16) 192.8	159.3450	(T16) 192.8	A	A/G TACTICAL
CALCORD	15	MEDICAL	156.0750	(T6) 156.7	156.0750	(T6) 156.7	A	
AIRGUARD	16	EMERGENCY	168.6250	0.0	168.6250	(T1) 110.9	A	

9. Prepared by: Name: J. Nehring RESL

Signature:

ICS 204 Date/Time: 9/7/2024 2200 Personnel Count: 49

ASSIGNMENT LIST (ICS 204 WF)

CONTROLLED UNCLASSIFIED
INFORMATION//BASIC

1. Incident Name: <p style="text-align: center; font-weight: bold;">BOONE</p>	2. Operational Period: Date From: 09/08/24 Date To: 09/09/24 Time From: 0700 Time To: 0700	3. Branch Division <p style="text-align: center; font-size: 2em; font-weight: bold;">IX Z</p> <p style="text-align: center;">Page 1 of 1 Zulu</p>
---	---	--

4. Operations Personnel:	
Operations Section Chief: L. Haack	Night Ops: L. Monsen
Branch Director: G. Trull	Branch Safety: S. Gonzales / R. Pope (T)
Division/Group Supervisor: J. Detmer / B. Meadows (T)	Air Attack: A. Sanchez

5. Resources Assigned:	** Resources Below in Bold are 12 Hour **						Hours	Reporting Location
Resource Identifier	ALS	LWD	Leader	Personnel	Request #			
STC MEU 9110C			A. LEONARD	18	E-80	0700-0700	DP 10	
STC XSC 2312C	X		M. KRISMAN	22	E-265	0700-0700	DP 10	
CRW2 TBD						0700-0700	DP 10	
W/T PVT E-9 Jardine's			M. JARDINE	2	E-9	0700-0700	DP 10	
W/T PVT E-20 Weyrick			C. MARGRAVE	2	E-20	0700-0700	DP 10	
W/T PVT E-131 Docs Equipment			D. GINN	2	E-131	0700-0700	DP 10	
W/T PVT E-176 Berlogar			C. BERLOGAR	1	E-176	0700-1900	DP 10	

6. Work Assignments:
 Hold fire within current lines.
 Improve and hold control lines.
 Mop up 300' interior.
 Backhaul trash/hose/water.

7. Special Instructions:

8. Communications								
Name	Ch	Function	Rx Freq	Rx Tone	Tx Freq	Tx Tone	Mode	Notes
C2 T7	1	COMMAND	151.2650	(T8) 103.5	159.3300	(T7) 167.9	A	CDF C2 TONE 7
VFIRE 26	12	TACTICAL	154.3025	(T6) 156.7	154.3025	(T6) 156.7	A	
CDF A/G8	14	A/G TAC	159.3450	(T16) 192.8	159.3450	(T16) 192.8	A	A/G TACTICAL
CALCORD	15	MEDICAL	156.0750	(T6) 156.7	156.0750	(T6) 156.7	A	
AIRGUARD	16	EMERGENCY	168.6250	0.0	168.6250	(T1) 110.9	A	

9. Prepared by: Name:	J. Nehring	RESL	Signature:
ICS 204	Date/Time: 9/7/2024	2200	Personnel Count: 47

ASSIGNMENT LIST (ICS 204 WF)

CONTROLLED UNCLASSIFIED
INFORMATION//BASIC

1. Incident Name: <p style="text-align: center; font-weight: bold;">BOONE</p>	2. Operational Period: Date From: 09/08/24 Date To: 09/09/24 Time From: 0700 Time To: 0700	3. Branch Group <p style="text-align: center; font-weight: bold;">Contingency</p>
4. Operations Personnel:		Page 1 of 1

Operations Section Chief: L. Haack	Night Ops: L. Monsen
Branch Director: M. Bontrager (12hr)	Branch Safety:
Division/Group Supervisor: D. Schmidt / L. French (T)	Air Attack: A. Sanchez

5. Resources Assigned:	** Resources Below in Bold are 12 Hour **							
Resource Identifier	ALS	LWD	Leader	Personnel	Request #	Hours	Reporting Location	
STC LPF 1652C		9/18	J. COPE	25	E-75	0700-1900	DP 50	
DOZ FKU 4341			C. LEMONS	2	E-1	0700-0700	DP 50	
DOZ XFR 43			D. ROBERTS	3	E-15	0700-0700	DP 50	
DOZ PVT E-22 Varian			B. BARIAN	2	E-22	0700-1900	DP 50	
DOZ PVT E-25 Dye Trucking			K. DYE	2	E-25	0700-1900	DP 50	
DOZ PVT E-26 Firestorm			B. DONN	2	E-26	0700-1900	DP 50	
DOZ PVT E-88 Wilber			K. WILSON	2	E-88	0700-1900	DP 50	
W/T PVT E-8 A&CC			CRYSTAL	2	E-8	0700-1900	DP 50	
W/T PVT E-96 Dusi Servizio			M. DUSI	2	E-96	0700-1900	DP 50	
W/T PVT E-97 Fireline			R. HURL	2	E-97	0700-1900	DP 50	
W/T PVT E-106 H2O Transport			U. PEREZ	2	E-106	0700-1900	DP 50	
EXC PVT E-317 Gen Lee			N. NEWMANN	2	E-317	0700-1900	DP 50	
HEQB Breniman			Q. BRENNIMAN	1	O-23	0700-0700	DP 50	
HEQB Brown			C. BROWN	1	O-25	0700-0700	DP 50	
HEQB (T) Terstegge			D. TERSTEGGE	1	O-284	0700-0700	DP 50	
HEQB (T) Reynolds			B. REYNOLDS	1	O-288	0700-0700	DP 50	

6. Work Assignments:
Construct contingency line from DIV O to DIV H.

7. Special Instructions:

8. Communications

Name	Ch	Function	Rx Freq	Rx Tone	Tx Freq	Tx Tone	Mode	Notes
C2 T7	1	COMMAND	151.2650	(T8) 103.5	159.3300	(T7) 167.9	A	CDF C2 TONE 7
CDF T27	7	TACTICAL	159.2925	(T17) 67.0	159.2925	(T17) 67.0	A	
CDF A/G8	14	A/G TAC	159.3450	(T16) 192.8	159.3450	(T16) 192.8	A	A/G TACTICAL
CALCORD	15	MEDICAL	156.0750	(T6) 156.7	156.0750	(T6) 156.7	A	
AIRGUARD	16	EMERGENCY	168.6250	0.0	168.6250	(T1) 110.9	A	

9. Prepared by: Name: J. Nehring RESL Signature:

ICS 204 Date/Time: 9/7/2024 2200 Personnel Count: 52

ASSIGNMENT LIST (ICS 204 WF)

CONTROLLED UNCLASSIFIED
INFORMATION//BASIC

1. Incident Name: <p style="text-align: center; font-weight: bold;">BOONE</p>	2. Operational Period: Date From: 09/08/24 Date To: 09/09/24 Time From: 0700 Time To: 0700	3. Branch Group <p style="text-align: center; font-weight: bold;">FSR</p>
---	---	--

Page 1 of 2

4. Operations Personnel:	
Operations Section Chief: L. Haack	Night Ops: L. Monsen
Branch Director:	Branch Safety:
Division/Group Supervisor: J. Fitch (12hr) / N. Kent (12hr) (T)	Air Attack: A. Sanchez

5. Resources Assigned:	** Resources Below in Bold are 12 Hour **						
Resource Identifier	ALS	LWD	Leader	Personnel	Request #	Hours	Reporting Location
STF OES 2860F			R. GERING	17	E-351	0700-1900	ICP
DOZ PVT E-27 Wilber			S. HEILMANN	2	E-27	0700-1900	ICP
DOZ PVT E-86 Forestry Equip			T. BISHOP	4	E-86	0700-1900	ICP
DOZ PVT E-87 Trahan			M. BROWN	2	E-87	0700-1900	ICP
DOZ PVT E-89 Liquidation			B. HENDRIX	2	E-89	0700-1900	ICP
DOZ PVT E-91 Gus Mueller			G. MUELLER	2	E-91	0700-1900	ICP
DOZ PVT E-92 Kroeker Inc			A. REINKE	2	E-92	0700-1900	ICP
DOZ PVT E-93 Adames Trans			R. ADAME	2	E-93	0700-1900	ICP
DOZ PVT E-290 Rowell			J. ROWELL	1	E-290	0700-1900	ICP
DOZ PVT E-291 Gill Cattle			L. GILL	1	E-291	0700-1900	ICP
DOZ PVT E-292 Algerine West			M. WEST	2	E-292	0700-1900	ICP
DOZ PVT E-339 American Iron			D. CASH	4	E-339	0700-1900	ICP
DOZ PVT E-340 805 Discing			S. LANDER	2	E-340	0700-1900	ICP
DOZ PVT E-341 Lynch Trucking			M. LYNCH	2	E-341	0700-1900	ICP
DOZ PVT E-342 Maely INC			C. ROEWER	2	E-342	0700-1900	ICP
DOZ PVT E-343 Lynch Trucking			M. LYNCH	2	E-343	0700-1900	ICP
DOZ PVT E-344 O' Ferrall			T. O'FERRAL	1	E-344	0700-1900	ICP
EXC PVT E-316 Gill			N. JARED	1	E-316	0700-1900	ICP
SKID TBD							ICP

6. Work Assignments:
Identify and document fire suppression repair needs.
Implement fire suppression plan.

7. Special Instructions:

8. Communications								
Name	Ch	Function	Rx Freq	Rx Tone	Tx Freq	Tx Tone	Mode	Notes
C2 T7	1	COMMAND	151.2650	(T8) 103.5	159.3300	(T7) 167.9	A	CDF C2 TONE 7
VFIRE 26	12	TACTICAL	154.3025	(T6) 156.7	154.3025	(T6) 156.7	A	
CDF A/G8	14	A/G TAC	159.3450	(T16) 192.8	159.3450	(T16) 192.8	A	A/G TACTICAL
CALCORD	15	MEDICAL	156.0750	(T6) 156.7	156.0750	(T6) 156.7	A	
AIRGUARD	16	EMERGENCY	168.6250	0.0	168.6250	(T1) 110.9	A	

9. Prepared by: Name: J. Nehring RESL Signature:
ICS 204 Date/Time: 9/7/2024 2200 Personnel Count: 51

ASSIGNMENT LIST (ICS 204 WF)

CONTROLLED UNCLASSIFIED
INFORMATION//BASIC

1. Incident Name: <p style="text-align: center;">BOONE</p>	2. Operational Period: Date From: 09/08/24 Date To: 09/09/24 Time From: 0700 Time To: 0700	3. Branch Group <p style="text-align: center;">FSR</p>
---	---	--


4. Operations Personnel:		Page 2 of 2
Operations Section Chief: L. Haack	Night Ops: L. Monsen	
Branch Director:	Branch Safety:	
Division/Group Supervisor: J. Fitch (12hr) / N. Kent (12hr) (T)	Air Attack: A. Sanchez	

5. Resources Assigned:		** Resources Below in Bold are 12 Hour **					
Resource Identifier	ALS	LWD	Leader	Personnel	Request #	Hours	Reporting Location
HEQB Sooy			D. SOOY	1	O-290	0700-1900	ICP
HEQB Castairs			M. CASTAIRS	1	O-292	0700-1900	ICP
HEQB (T) Fazio			J. FAZIO	1	O-238	0700-1900	ICP
HEQB TBD						0700-1900	ICP
FSRS Kiniery			K. KINIERY	1	O-378	0700-1900	ICP
FSRS Lopez			C. LOPEZ	1	O-378	0700-1900	ICP
ARCH Spitzer			R. SPITZER	1	O-69	0700-1900	ICP
REAF Westphal			M. WESTPHAL	1	O-70	0700-1900	ICP

6. Work Assignments:
Identify and document fire suppression repair needs.
Implement fire suppression plan.

7. Special Instructions:

8. Communications								
Name	Ch	Function	Rx Freq	Rx Tone	Tx Freq	Tx Tone	Mode	Notes
C2 T7	1	COMMAND	151.2650	(T8) 103.5	159.3300	(T7) 167.9	A	CDF C2 TONE 7
VFIRE 26	12	TACTICAL	154.3025	(T6) 156.7	154.3025	(T6) 156.7	A	
CDF A/G8	14	A/G TAC	159.3450	(T16) 192.8	159.3450	(T16) 192.8	A	A/G TACTICAL
CALCORD	15	MEDICAL	156.0750	(T6) 156.7	156.0750	(T6) 156.7	A	
AIRGUARD	16	EMERGENCY	168.6250	0.0	168.6250	(T1) 110.9	A	

9. Prepared by: Name: J. Nehring RESL Signature: 

ICS 204 Date/Time: 9/7/2024 2200 Personnel Count: 7

ASSIGNMENT LIST (ICS 204 WF)

CONTROLLED UNCLASSIFIED
INFORMATION//BASIC

1. Incident Name:	2. Operational Period:	3. Branch
BOONE	Date From: 09/08/24 Date To: 09/09/24 Time From: 0700 Time To: 0700	ROAD

Page 1 of 1

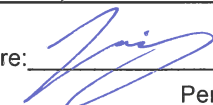
4. Operations Personnel:	
Operations Section Chief: L. Haack	Night Ops: L. Monsen
Branch Director:	Branch Safety:
Group Supervisor: P. Leuzinger	Air Attack: A. Sanchez

5. Resources Assigned:	** Resources Below in Bold are 12 Hour **						
Resource Identifier	ALS	LWD	Leader	Personnel	Request #	Hours	Reporting Location
W/T PVT E-99 Walton Ranch			J. KELSEY	2	E-99	0700-1900	ICP
W/T PVT E-105 Valley Farm			L. HARRINGTON	1	E-105	0700-1900	ICP
W/T PVT E-109 Arbor			S. HURT	2	E-109	0700-1900	ICP
W/T PVT E-111 Kroker			G. VARGAS	2	E-111	0700-1900	ICP
W/T PVT E-113 Vilian Bates			T. BROWNING	2	E-113	0700-1900	ICP
W/T PVT E-132 Docs Equipment			D. PINN	2	E-132	0700-1900	ICP
W/T PVT E-140 Fisks			S. SKERCE	1	E-140	0700-1900	ICP
W/T PVT E-280 Iron Response			MICHAEL	1	E-280	0700-1900	ICP
W/T PVT E-281 Golden State			R. WARD	1	E-281	0700-1900	ICP
W/T PVT E-282 Owens			J. OWENS	1	E-282	0700-1900	ICP
W/T PVT E-283 Golden State			P. MCCABE	1	E-283	0700-1900	ICP
W/T PVT E-284 Alanf			S. WHARFF	1	E-284	0700-1900	ICP
W/T PVT E-285 Ca Fireline			N. WATSON	1	E-285	0700-1900	ICP
W/T PVT E-286 Docs Water			R. EDWARDS	1	E-286	0700-1900	ICP
W/T PVT E-287 Reids			J. STURGES	1	E-287	0700-1900	ICP
W/T PVT E-327 H2O			S. MORASCI	1	E-327	0700-1900	ICP
W/T PVT E-331 Matrix			J. ANDERSON	1	E-331	0700-1900	ICP
HEQB Campbell			M. CAMPBELL	1	O-24	0700-1900	ICP
HEQB (T) Moore			M. MOORE	1	O-237	0700-1900	ICP

6. Work Assignments:
Identify areas within and adjacent to fire area that require road repair or watering.
Water roads to mitigate dust.

7. Special Instructions:

8. Communications								
Name	Ch	Function	Rx Freq	Rx Tone	Tx Freq	Tx Tone	Mode	Notes
C2 T7	1	COMMAND	151.2650	(T8) 103.5	159.3300	(T7) 167.9	A	CDF C2 TONE 7
VFIRE 26	12	TACTICAL	154.3025	(T6) 156.7	154.3025	(T6) 156.7	A	
CDF A/G8	14	A/G TAC	159.3450	(T16) 192.8	159.3450	(T16) 192.8	A	A/G TACTICAL
CALCORD	15	MEDICAL	156.0750	(T6) 156.7	156.0750	(T6) 156.7	A	
AIRGUARD	16	EMERGENCY	168.6250	0.0	168.6250	(T1) 110.9	A	

9. Prepared by: Name: J. Nehring RESL Signature: 

ICS 204 Date/Time: 9/7/2024 2200 Personnel Count: 23

AIR OPERATIONS SUMMARY ICS-220													
Incident Name / Number		Sunrise	Startup	Cutoff	Sunset	Time Prepared		Date Prepared		Prepared By			
800NE / CAFKU019190		6:39	7:09	18:51	19:21	1900 Shutdown 19:51		Saturday, September 7, 2024 Operational Period - Date Sunday September 8, 2024		BYRON VANCE Operational Period - Time 0700-2100			
General Remarks, Safety Notes, Hazards, Air Operations Special Equipment, etc.													
TRACK ALL DIPSITE LOCATIONS / NUMBER OF DIPS / GALLONS TAKEN. TRACK ALL DROP LOCATIONS / NUMBER OF DROPS / GALLONS DROPPED ALL GPS DATA TO BE COLLECTED IN DEGREES. MINUTES. DECIMAL MINUTES FORMAT. AVOID Aerial Application of Retardant / Foam / Agent within 300' of Waterways, Bodies of Water, etc. If Retardant / Foam / Agent is Dropped Within These Areas Immediately Notify the AOBDD and Provide the Following Information: Lat / Long, Estimated Number of Gallons and a Map Detailing The Area.													
Helibase Information			Request #			TFR Information			Rescue Ship Information				
Name Coalinga (C80)			Request #			POLY NM			Day Helist H407				
Latitude 36 09.84			Altitude: 9,500 MSL			Centerpoint: POLY Lat			Name H407				
Longitude 120 17.61			NOTAMS: FDC 4/0530			Frequency 135.0250			Phone 661-282-7030				
RETARDANT BASE			http://tfr.faa.gov/tfr2/list.html			Make/Model 205++			205++				
Name MUD RUN MRB			Frequency 135.0250			Location KVIS			KVIS				
Latitude 36 13.47			Request Procedure for These Aircraft:			Incident Communications							
Longitude 120 31.39			See Medical Plan For Additional Info										
(use page 2 if needed)													
FAA #	Type	Make/Model	Helibase	Avail	Start	Remarks	FAA #	Type	Make/Model	Helibase	Avail	Start	Remarks
HELICOPTERS (Use page 2 if Needed)													
20HT	I	CH-54	C80	0800	0800	A-13							
19HT	I	CH-54	C80	0800	0800	A-40							
1CH	I	CH-47	C80	0800	0800	A-73							
37S	I	CH-54	C80	0800	0800	A-68							
4AJ	I	CH-47	C80	0800	0800	A-67							
2AH	II	B212HP	C80	0800	0800	A-42							
17N	II	UH-1H	C80	0800	0800	A-43							
1VR	II	B212HP	C80	0800	0800	A-61							
7AC	III	B407	C80	0800	0800	A-52 HELCO/RECON							
4TV	III	AS-350B3	C80	0800	0800	A-53 HELCO/RECON							
UAS MODULES													
FAA #	Type	Make/Model	Base	Avail	Start	Remarks	FAA #	Type	Make/Model	Base	Avail	Start	Remarks

MEDICAL PLAN ICS-206	1. INCIDENT NAME	2. DATE PREPARED	3. TIME PREPARED	4. OPERATIONAL PERIOD
	BOONE CA-FKU-01910	09/07/24	1700	0700-0700 09/08/24-09/09/24

5. INCIDENT MEDICAL AID STATIONS			
MEDICAL AID STATIONS	LOCATION	PARAMEDICS	
Cal Mat	Base Camp	YES	NO
MERT	Base Camp	XX	

6. TRANSPORTATION				
A. Air Ambulances				
NAME	ADDRESS	PHONE	PARAMEDICS	
FD Hoist Copter Kern H-407 (24hr)	Dispatched @ time of request (40 min response)	CMD Channel	ALS	
Skylife Air Ambulance	Visalia/Paso Robles	CMD Channel	ALS	
B. Ground Ambulances				
American Ambulance 198	Base Camp	CMD Channel	ALS	
American Ambulance 195	DP 10	CMD Channel	ALS	
Coalinga FD M256	DP 50	CMD Channel	ALS	

7. HOSPITALS								
NAME	ADDRESS	TRAVEL TIME		PHONE	HELIPAD		BURN CENTER	
		AIR	GRND		YES	NO	YES	NO
Coalinga Regional Medical Ctr	1191 Phelps Ave, Coalinga 36° 9.17' N 120° 20.50' W	10 min	30 min	(559) 935-6400		XX		XX
Adventist Medical Center	115 Mall Dr, Hanford 36° 19.72' N 119° 39.59' W	15 min	60 min	(559) 589-9200	XX			XX
Saint Agnes Medical Center Level 3 Trauma	1303 E Herndon Ave, Fresno 36° 50.12' N 119° 45.92' W	35 min	90 min	(559) 450-3000	XX			XX
Community Regional Med Center Level 1 Trauma	2823 Fresno St, Fresno 36° 44.64' N 119° 47.07' W	35 min	90 min	(559) 459-7427	XX		XX	

8. MEDICAL EMERGENCY PROCEDURES

EMERGENCY & INCIDENT WITHIN INCIDENT (IWI) FLOW CHART

AN EMERGENCY WILL ONLY BE DECLARED AS AN IWI BY THE INCIDENT COMMANDER, OPERATIONS SECTION CHIEF OR THEIR DESIGNEE

```

    graph TD
      A[COMMUNICATIONS/ECC IS NOTIFIED OF AN "EMERGENCY" FROM A DIVISION/BRANCH] --> B[THE COMMAND NET WILL BE CLEARED FOR THE "EMERGENCY" TRAFFIC & 20 MINUTE TIMER IS STARTED (AS DEEMED NECESSARY)]
      B --> C[POSITIVE CONTACT IS MADE WITH THE INCIDENT COMMANDER, OPERATIONS SECTION CHIEF, OR DESIGNEE TO ENSURE "EMERGENCY" WAS HEARD]
      C --> D[THE IC, OPERATIONS SECTION CHIEF OR DESIGNEE DECLARED AN "IWI"]
      D -- NO --> E[THE "EMERGENCY" WILL BE HANDLED AT THE DIVISION OR BRANCH LEVEL WITH THE POINT OF CONTACT]
      D -- YES --> F[THE IC, OPERATIONS SECTION CHIEF, OR DESIGNEE WILL:  
• ASSIGN AN "IWI" IC  
• ANNOUNCE THE "IWI" OVER THE COMMAND NET  
THE IWI IC WILL GO DIRECT FOR ANY RESOURCES NEEDED TO MITIGATE THE INCIDENT]
  
```

CAMP EMERGENCY---Contact Communications with patient complaint/condition and location. Medical Staff will respond to stabilize incident.

INJURY REPORTING PROCEDURES

NATURE OF INJURY _____

LOCATION OF PATIENT _____

TRANSPORTATION REQUESTED BY: AIR ___ GROUND ___

POINT OF PICKUP _____

LAT _____ LONG _____

PATIENT UNIT ID _____

REMINDER: DO NOT GIVE PT NAME OVER RADIO

IS AN EMT WITH PATIENT: YES ___ NO ___

AGE _____


SEX: MALE ___ FEMALE ___

ALL EMERGENCIES---Secure the area and identify witnesses for later investigation. Keep an accurate log of events.

Communications-(916) 883-0933

ICS 206 8-78	9. PREPARED BY (MEDICAL UNIT LEADER) Josh Clark MEDL 951 551-2528	10. REVIEWED BY (SAFETY OFFICER) Nate LaRusso SOF1
--------------	--	---

ICS 205 - INCIDENT RADIO COMMUNICATIONS PLAN

1. Incident Name: BOONE Incident Channels		2. Date/Time Prepared Date: 09/07/2024 Time: 1930		3. Operational Period: Date From: 09/08/24 Time From: 0700		Date To: 09/09/24 Time To: 0700			
4. Communications									
Ch#	Function	Name	Assigned To	Rx Freq	Rx Tone	Tx Freq	Tx Tone	Mode	Notes
1	COMMAND	C2 T7	ALL DIVS	151.2650	(T8) 103.5	159.3300	(T7) 167.9	A	CDF C2 TONE 7
2	COMMAND	C2 T10	ALL DIVS	151.2650	(T8) 103.5	159.3300	(T10) 107.2	A	CDF C2 TONE 10
3	COMMAND	C2 T15	ALL DIVS	151.2650	(T8) 103.5	159.3300	(T15) 162.2	A	CDF C2 TONE 15
4									
5									
6									
7	TACTICAL	CDF T27	DIV A / CONTINGENCY	159.2925	(T17) 67.0	159.2925	(T17) 67.0	A	
8	TACTICAL	CDF T28	DIV H	159.3075	(T17) 67.0	159.3075	(T17) 67.0	A	
9	TACTICAL	CDF T31	DIV K	151.3925	(T17) 67.0	151.3925	(T17) 67.0	A	
10	TACTICAL	CDF T38	DIV O	159.3375	(T17) 67.0	159.3375	(T17) 67.0	A	
11	TACTICAL	VFIRE 25	DIV R	154.2875	(T6) 156.7	154.2875	(T6) 156.7	A	
12	TACTICAL	VFIRE 26	DIV Z / FSR	154.3025	(T6) 156.7	154.3025	(T6) 156.7	A	
13	A/G CMD	A/G CMD	ALL DIVS	167.8125	0.0	167.8125	0.0	A	A/G COMMAND
14	A/G TAC	CDF A/G8	ALL DIVS	159.3450	(T16) 192.8	159.3450	(T16) 192.8	A	A/G TACTICAL
15	MEDICAL	CALCORD	ALL DIVS	156.0750	(T6) 156.7	156.0750	(T6) 156.7	A	MEDICAL COORDINATION
16	EMERGENCY	AIRGUARD	ALL DIVS	168.6250	0.0	168.6250	(T1) 110.9	A	EMERGENCY USE ONLY
17									
18									
19									
20	EMERGENCY	AIRGUARD	ALL DIVS	168.6250	0.0	168.6250	(T1) 110.9	A	EMERGENCY USE ONLY
5. Special Instructions								BOONE COMMUNICATIONS (916) 883-0933	
6. Prepared by (Communications Unit Leader): Name: BERNIE RAPP				Signature: 		Date/Time: 09/07/24		NIMS IAP 1930	
ICS 205 - CONTROLLED UNCLASSIFIED INFORMATION//BASIC									

FIRING OPERATION CHECKLIST

Location: _____

Date: _____ Time: _____

Firing Supervisor _____

1. Personnel Briefing

- Objectives
- Conditions (fire environment)
- Resource assignments identified
 - Firing personnel
 - Holding forces
 - Lookouts
- Ignition plan/sequence
- Communication Plan
- Contingency Plan
- Safety issues

2. Go / No-Go

- All personnel briefed
- Weather forecast reviewed
- Resources in place
- Lookouts posted as needed
- Anchor and termination firing points identified
- Communications systems in place
- Fire behavior forecast reviewed
- Escape routes and safety zones established and made known
- Adjoining forces/Air Attack notified

3. Approval Prior To Firing

- Division Supervisor
- Branch Director
- Operations

4. Other Notifications

- Other: _____
- Other: _____

Attach Firing Operations Checklist to ICS-214

BOONE FIRE

SUPPRESSION REPAIR GUIDELINES 9/8/2024

Fresno Kings Unit Support Incident # CA-FKU-019190

OBJECTIVES:

- Minimize surface and gully erosion.
- Minimize sediment delivery to stream channels.
- Restore conditions to pre-fire drainage patterns.
- Limit off road vehicle access on hand and dozer lines where possible with dirt berm or existing obstructions.
- To the extent possible support agency specific needs.

GENERAL GUIDELINES

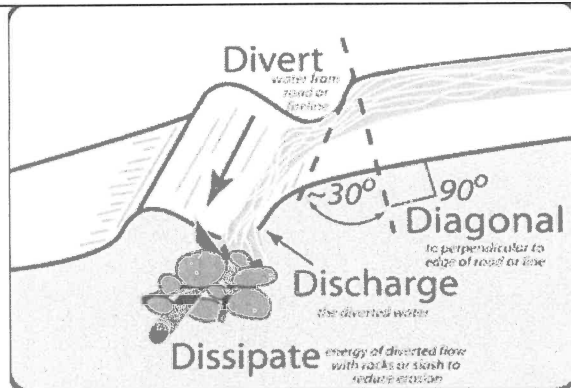
Dozer lines

- Pull back berms of the downhill side of dozer line
- Install and construct water bars on lines steeper than 10%, as per the following, or as directed by the Suppression Repair team:

WATER BAR OR CROSS DRAIN SPACING

Fireline or Road Gradient (%)	0-10%	11-25%	26-50%	>50%
Spacing	200'	150'	100'	75'

*All waterbars should be installed diagonally with a minimum cut of 6” into existing grade, and minimum height of 12” from the bottom of the trench to backfill top. Waterbars shall be installed at all approaches to watercourse crossings. Waterbars shall be constructed to allow for drainage at the discharge end into non-erodible material and into the green where feasible.



Roads

- Clean culverts plugged with soil and debris resulting from fire control activities.
- Breach/remove berms to facilitate drainage.
- Water roads as directed by Suppression Repair Specialist

Camps, Staging, Helispots/Helibases and Drop Points

- Restore sites to pre-fire conditions to best extent possible
- Remove all flagging, garbage, litter and unneeded equipment
- Comply with all conditions of any Land Use Agreement

Watercourses

- All watercourse issues shall be reported to the Suppression Repair Group Supervisor immediately, before any work may begin.
- All slash, soil, and debris deposited into watercourses resulting from fire suppression activities shall be removed and stabilized.
- All loose soil must be pulled away from the watercourse and stabilized.

Archaeological or Historic Sites (if discovered)

- All potential sites shall be avoided.
- Impacted sites will be reported to the Fire Suppression Repair Group Supervisor or Suppression Repair Coordinator.
- If sites are encroached upon, work will stop immediately; **if there is no threat of fire spread**, and the Fire Suppression Repair Group Supervisor shall be notified.
- Avoid all sites within “STZ” orange and white candy stripe flagging.

TRAINING SPECIALIST MESSAGE

Trainer / Mentors:

If in the event:

You are leaving the incident before your assigned trainee

Or

Your trainee is reassigned

You must complete a performance evaluation for the period the trainee was assigned to you

TRAINEES:

In order to receive documented credit for your training assignment – you must close out with the Training Specialist before you Demob!!

Bring the following to the closeout:

- ✓ **A completed and signed ICS 225 or 226 Performance Evaluation**
- ✓ **A completed Exit Interview Form**

Forms are available at the Training Office

Training Specialists

Claudia Soiza 949-632-7813
Jeremy Cernansky 831-246-0834

INCIDENT TRAINEE REGISTRATION FORM

TRAINING SPECIALISTS: Claudia Soiza 949-632-7813 -- Jeremy Cernansky (t) 831-246-0834

- ✓ All Incident trainees, including those on Firefighting Modules at your earliest opportunity complete this form and see the Training Specialist.
- ✓ Prior to or as you process through DEMOB, remember to close your training package. To close your training package, bring: 1) A performance rating from your trainer. (ICS 225)
2) Your task book that has as many entries as possible by your Trainer.

TRAINEE'S DATA

Name (PRINT): _____ ICS Trainee Position: _____

Request # (A,C,E,or O): _____ Agency Designator (Ex. CA-LMU): _____

Ordered as a Trainee? Yes No

Priority Trainee? Yes No

Date Assigned: _____ Cell Phone: _____

Trainee's Email Address _____

HOME UNIT TRAINING OFFICER INFORMATION: (Chief, Training Officer, etc.)

Name: _____

Name of Home Unit: _____

Phone: _____

Training Officer's Email Address _____

TRAINEE PREREQUISITES

1. Valid Red Card or agency certification card? _____ Yes _____ No

2. Trainee has current position task book issued by home unit? _____ Yes _____ No

Current Task Book Progress: (Circle) 0% 25% 50% 75% 90%

YOUR TRAINER/EVALUATOR'S DATA

Trainer/Evaluator Name: _____ ICS position on Incident _____

Home Unit: _____ Agency Designator (ex. CA-LMU): _____

Cell Phone: _____

FINANCE SECTION

MESSAGE

FINANCE SECTION is located at Caballo Rodeo Grounds in Coalinga - on trailer row.

CAL FIRE TIME UNIT (Personnel and Hired Equipment)

- **CAL FIRE PERSONNEL:** Make sure you have started your eFC-33's with TIME and update after each shift. Please make sure Epay schedules are up to date.
- **HIRED EQUIPMENT SUPPLIERS:** Check in with the Time Unit and drop off your agreements.
- **Shift Tickets:** Line supervisors complete for Hired Equipment and submit hard copy to TIME OR complete an e-Shift Ticket online at <https://shifftickets.fire.ca.gov> AND provide a hard copy to TIME at the end of every shift. Shift Ticket example on the next page of IAP.
- **Local Government Resources: Check in with OES**

COMP / CLAIMS

- Report all comp claims to FINANCE. Sully Ramirez (t): 760-715-7400
David Janssen: 707-599-2564

Water Useage:

- Only pull Water from metered hydrants in the city of Coalinga

AO-341 Hotel Rosters

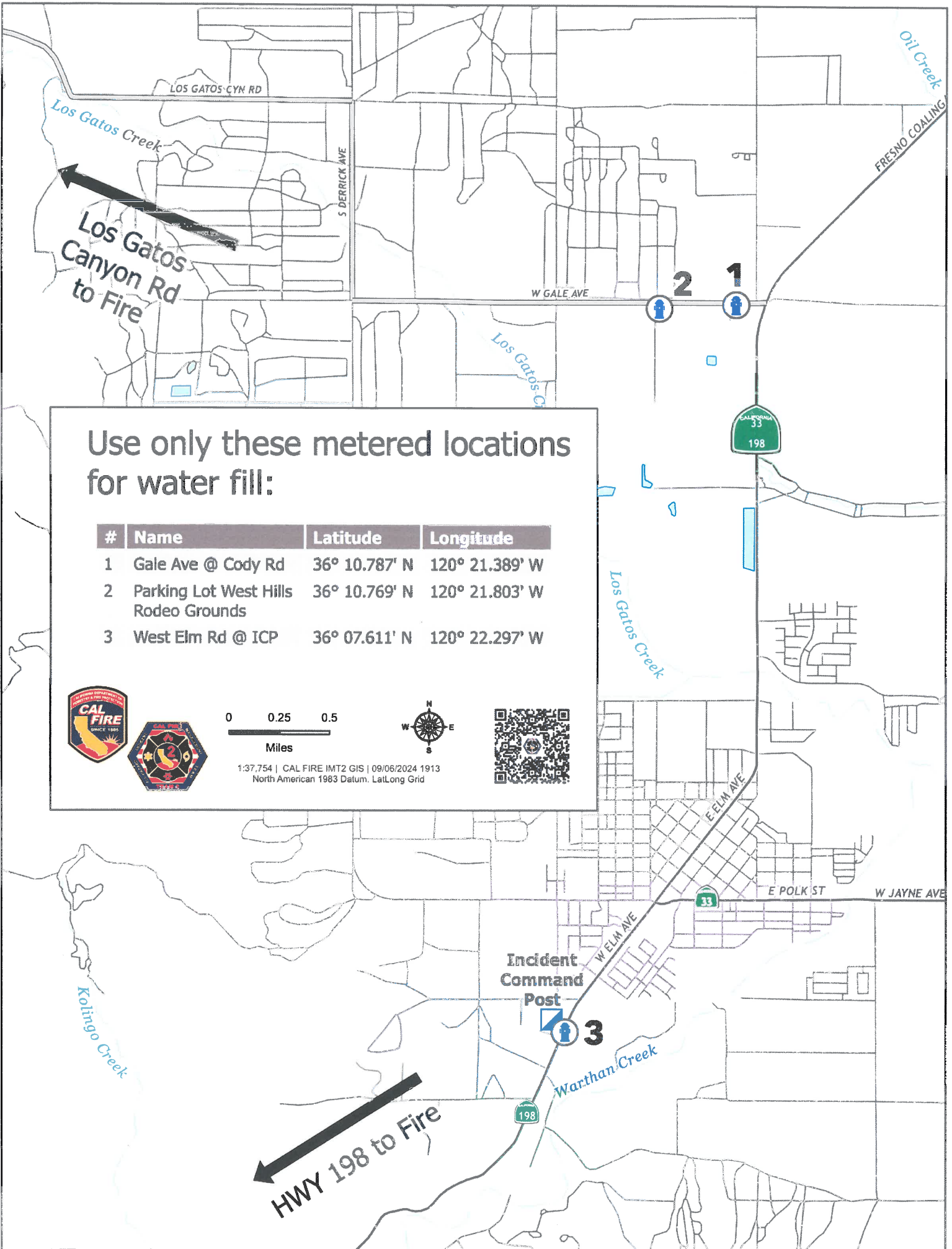
- Please sign the roster for **every** night.

Michele Patton, FSC1
Cesar Nerey, Deputy FSC1

Shift Ticket Example

EMERGENCY SHIFT TICKET and EVALUATION FORM					Contractor Name	
The responsible Government Officer will complete this form each shift					Fireline Builders	
Incident or Project Name BOONE		Incident Number CA-FKU-019190	Request Number E # Here		Operator #1 Bob Smith	Operator #2 Jeff Smith
Agreement Number Obtain from suppliers agreement					Operator Furnished By: <input checked="" type="checkbox"/> Contractor <input type="checkbox"/> Government	
Equipment Make CAT		Equipment Model / Type D6N, Type II E			Operating Supplies Furnished By: <input checked="" type="checkbox"/> Contractor <input type="checkbox"/> Government	
Serial Number 6LN3344		Licence Number			Equipment Status <input checked="" type="checkbox"/> Inspected <input checked="" type="checkbox"/> Under Agreement <input type="checkbox"/> Released by Government <input type="checkbox"/> Withdrawn by Contractor	
Equipment Use					Remarks/Comments ** NO DAMAGE / NO CLAIMS	
Date		(Circle) Hours / Days / Miles				
Mo / Day	Start	Stop	Work	Assignment		
9/15	0700	2400	17	Division B		
9/16	0001	0700	7	Division B		
Vendor Rating					Govt. Rep. Name and Position - PRINT Mike Weber Div. A	
		Poor*	Avg.	Good	Exc.	N/A
Met Performance Expectations		Vendor Rating must be done.			Govt. Rep. Signature <i>Mike Weber</i>	
Equipment in Safe Working Condition					Contractor Signature <i>Bob Smith</i>	
Operator Skill Level					Date 09/15/24	
Operates Safely					Time 0700	
Operator's Cooperation Level					Date 09/15/24	
Overall Performance					Time 0700	
* NOTE: Any rating of POOR requires an explanation in Comment Section.					CALFIRE 297	
**Final evaluation or for more documentation, use an ICS Form 230 or equivalent.					(Rev 3-2011)	
Pink - Finance		Blue - Home Unit HE Coordinator		Yellow - Vendor		White - Govt Representative

EMERGENCY SHIFT TICKET and EVALUATION FORM					Contractor Name	
The responsible Government Officer will complete this form each shift					Fireline Builders	
Incident or Project Name BOONE		Incident Number CA-FKU-019190	Request Number E # Here		Operator #1 Bob Smith	Operator #2
Agreement Number Obtain from suppliers agreement					Operator Furnished By: <input checked="" type="checkbox"/> Contractor <input type="checkbox"/> Government	
Equipment Make CAT		Equipment Model / Type D6N, Type II E			Operating Supplies Furnished By: <input checked="" type="checkbox"/> Contractor <input type="checkbox"/> Government	
Serial Number 6LN3344		Licence Number			Equipment Status <input checked="" type="checkbox"/> Inspected <input checked="" type="checkbox"/> Under Agreement <input type="checkbox"/> Released by Government <input type="checkbox"/> Withdrawn by Contractor	
Equipment Use					Remarks/Comments ** NO DAMAGE / NO CLAIMS	
Date		(Circle) Hours / Days / Miles				
Mo / Day	Start	Stop	Work	Assignment		
9/15	0700	1900	12	Division B		
Vendor Rating					Govt. Rep. Name and Position - PRINT Mike Weber Div. A	
		Poor*	Avg.	Good	Exc.	N/A
Met Performance Expectations		Vendor Rating must be done.			Govt. Rep. Signature <i>Mike Weber</i>	
Equipment in Safe Working Condition					Contractor Signature <i>Bob Smith</i>	
Operator Skill Level					Date 09/15/24	
Operates Safely					Time 1900	
Operator's Cooperation Level					Date 09/15/24	
Overall Performance					Time 1900	
* NOTE: Any rating of POOR requires an explanation in Comment Section.					CALFIRE 297	
**Final evaluation or for more documentation, use an ICS Form 230 or equivalent.					(Rev 3-2011)	
Pink - Finance		Blue - Home Unit HE Coordinator		Yellow - Vendor		White - Govt Representative



Use only these metered locations for water fill:

#	Name	Latitude	Longitude
1	Gale Ave @ Cody Rd	36° 10.787' N	120° 21.389' W
2	Parking Lot West Hills Rodeo Grounds	36° 10.769' N	120° 21.803' W
3	West Elm Rd @ ICP	36° 07.611' N	120° 22.297' W



1:37,754 | CAL FIRE IMT2 GIS | 09/06/2024 1913
North American 1983 Datum, Lat/Long Grid

IMT2 WATER USAGE REPORT

DATE: 8/14/24 WORK LOCATION: DIV A REQUEST #: E-23

AGENCY or VENDOR NAME: CAL FIRE/AAA Water RESOURCE ID: WT51/C309

TURN IN TO FINANCE DAILY

WATER SOURCE LOCATION Address, DP #, Lat-Long, etc.	Hydrant	Open source i.e. pond	Tank	Gallons Used	Property Owner and Contact Number if known **

**Please note if you made contact with property owner and their contact. (Use reverse side if needed.)

Additional Information: _____



The intent of this document is to track, record and validate the amount of water used on an incident. It is not intended to review the performance of equipment using the water on an incident.





PUBLIC INFORMATION

Boone Incident Media Line: (559) 356-5041

CURRENT INCIDENT STATUS	
Incident Start Date: 9/3/2024	Incident Start Time: 12:10 p.m.
Cause: Under Investigation	Acres:
Containment:	Total Personnel:

CAL FIRE SOCIAL MEDIA POLICY

The CAL FIRE Social Media Policy, Section 0691, must be adhered to when assigned to a CAL FIRE incident. You can find further information about the CAL FIRE Social Media Policy using the QR code.



PHOTOGRAPHS AND VIDEOS OF THE INCIDENT

The Information Section would like copies of videos and/or photos you took safely. Please bring your content to the PIO trailer; it will be reviewed and possibly uploaded to our many CAL FIRE social media sites.

LOST AND FOUND

The Information Section will manage lost and found items for the incident at the PIO Trailer.

MAIL

USPS: See mailing address below. Please do not go to the Post Office to pick up your mail. The Information Section will pick up all incident mail daily and bring it to base camp. Come by the PIO trailer for pickup.

FedEx and UPS: See mailing address below. CAL FIRE-Coalinga Station has graciously offered to receive incoming packages sent to personnel on the Boone Fire. Please do not go to the fire station for your packages. The Information Section will pick up all incident packages daily and bring them to base camp. Come by the PIO trailer for pickup.

Incident Base Camp Mailing Addresses

For Mail/Packages shipped through U.S. Postal Service (USPS)

Boone Fire
 Recipient Name
 General Delivery
 Coalinga, CA 93210

For Packages shipped through FedEx and UPS

CAL FIRE - Coalinga Station
 ATTN: Your Name & Position/Resource ID
 25600 Jayne Avenue
 Coalinga, CA 93210



Boone Fire Ground Support / Demob Inspections

Cal Trans Yard

30933 W Gale, Coalinga, CA 93210

Fuel Locations

518 West Gale Ave, Coalinga, CA 93210

Repairs

Boone Communications: (916) 883 – 0933

Ground Support

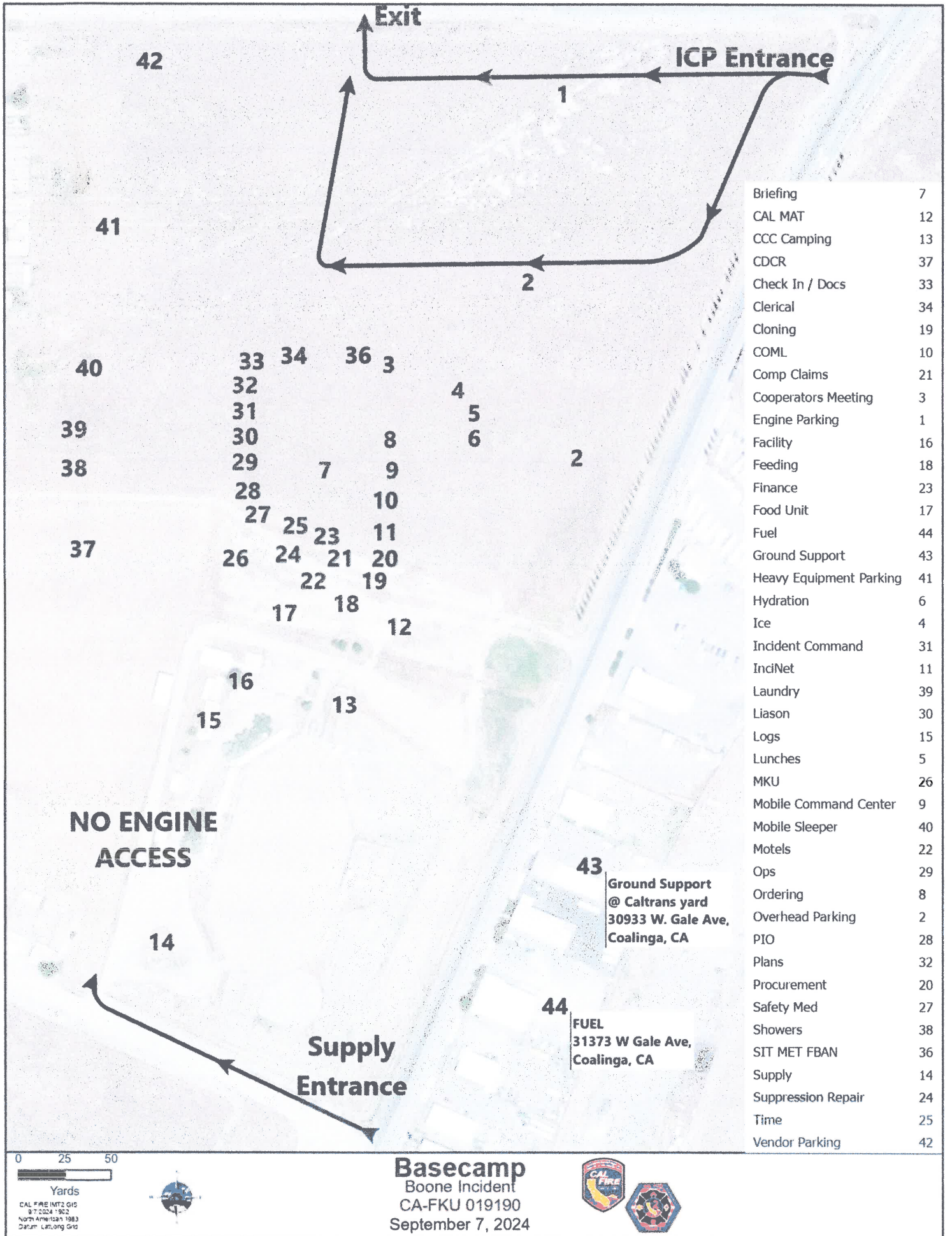
Kenneth Coulston (GSUL): (760) 835 - 5396

Jessie Trulock (GSUL): (209) 419 – 4430

Brennen Maldonado (GSUL-T): (707) 779 - 2783

Transportation

Scott Brown (EQPM - T): (626) 676 - 1636



Briefing	7
CAL MAT	12
CCC Camping	13
CDCR	37
Check In / Docs	33
Clerical	34
Cloning	19
COML	10
Comp Claims	21
Cooperators Meeting	3
Engine Parking	1
Facility	16
Feeding	18
Finance	23
Food Unit	17
Fuel	44
Ground Support	43
Heavy Equipment Parking	41
Hydration	6
Ice	4
Incident Command	31
InciNet	11
Laundry	39
Liason	30
Logs	15
Lunches	5
MKU	26
Mobile Command Center	9
Mobile Sleeper	40
Motels	22
Ops	29
Ordering	8
Overhead Parking	2
PIO	28
Plans	32
Procurement	20
Safety Med	27
Showers	38
SIT MET FBAN	36
Supply	14
Suppression Repair	24
Time	25
Vendor Parking	42

NO ENGINE ACCESS

43
Ground Support
 @ Caltrans yard
 30933 W. Gale Ave,
 Coalinga, CA

44
FUEL
 31373 W Gale Ave,
 Coalinga, CA

0 25 50
 Yards
 CAL FIRE INT3 GIS
 9/7/2024 1:02
 North American 1983
 Datum: WGS84 Grid

Basecamp
 Boone Incident
 CA-FKU 019190
 September 7, 2024



UNIT LOG (ICS 214)

1. Incident Name: <div style="text-align: center; padding: 5px;">BOONE</div>	2. Operational Period: Date From: <u>9/8/24</u> Date To: <u>9/9/24</u> Time From: <u>0700</u> Time To: <u>0700</u>
---	--

3. Unit Name/Designators	4. Unit Leader (Name and ICS Position)
---------------------------------	---

5. Personnel Assigned/Designators		
NAME	ICS POSITION	HOME BASE

6. Activity Log (Continue on Reverse)	
TIME	MAJOR EVENTS

7. Prepared By:	Date/Time:
-----------------	------------

NIMS IAP