

# INCIDENT ACTION PLAN FRANKLIN INCIDENT

CA-LAC-434928

Tuesday



## OPERATIONAL PERIOD

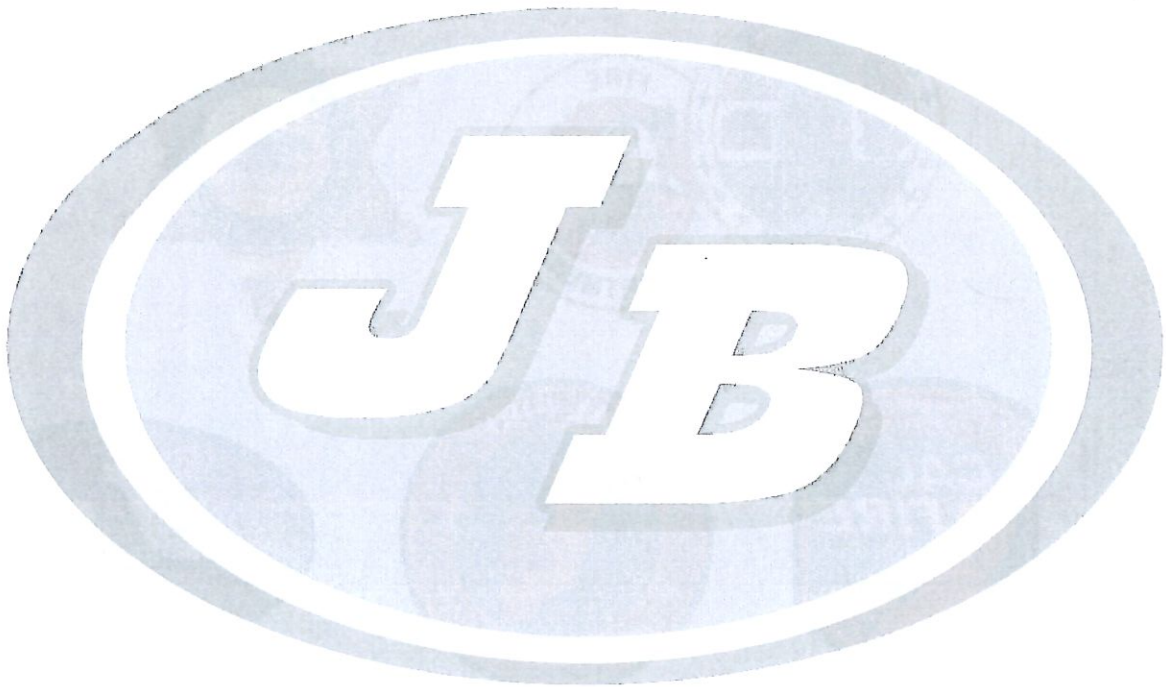
12/17/2024 0700

to

12/18/2024 0700



This page intentionally left blank



# INCIDENT OBJECTIVES (ICS 202)

<b>1. Incident Name:</b> <p style="text-align: center;">FRANKLIN</p>	<b>2. Operational Period:</b>	Date From: 12/17/2024	Date To: 12/18/2024
		Time From: 0700	Time To: 0700

**3. Objective(s):**

**Strategic Objectives**

A full suppression strategy is to be implemented on the Franklin Incident. Values at risk associated to the incident include human safety, private and public property and associated improvements, electrical power infrastructure, and cultural values. Minimize acres burned on all lands by utilizing effective and efficient strategies and tactics while maintaining safety first.

**Leaders Intent**

Work effectively with cooperative partners towards a common goal of protecting values in a safe and efficient manner. All incident assigned personnel should be prepared to take the appropriate actions regarding:

- Professional behavior, conduct timely and effective communications.
- Personal safety and safety of others, including driving slowly, safely, and defensively.
- Implementation of tactics that offer a high probability of success.
- Manage fatigue by taking breaks and maintaining work rest cycles.

**Management Objectives**

- Fight fire aggressively while maintaining safe work practices to minimize threats to the public and emergency responders, all actions and efforts will focus on safeguarding the residents and resources of Los Angeles County.
- Minimize damage to structures, private and public property, and other improvements in the fire area.
- Ensure repopulation takes place in a quick, efficient, and effective manner.
- Protect natural, cultural, and heritage resources.
- Continue to foster and maintain positive relationships with all local cooperators and stakeholders.
- Ensure coordinated, timely and accurate release of public information.
- Ensure costs are aligned with mission priorities.

**Control Objectives**

- Keep the fire South of Stokes Canyon Rd.
- Keep the fire West of Tuna Canyon Rd.
- Keep the fire East of Kanan Rd.
- Keep the fire North of the Pacific Ocean.

**General Situational Awareness:**

**5. Site Safety Plan Required?** Yes  No

**Approved Site Safety Plan(s) Located at:**

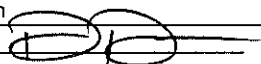
**6. Incident Action Plan**

- |   |  |   |  |
|---|--|---|--|
| <input checked="" type="checkbox"/> ICS 203 | <input checked="" type="checkbox"/> ICS 215A         | <input checked="" type="checkbox"/> PIO Message           | <input checked="" type="checkbox"/> ICP Map            |
| <input checked="" type="checkbox"/> ICS 204 | <input checked="" type="checkbox"/> ICS 220          | <input checked="" type="checkbox"/> Comms Message         | <input checked="" type="checkbox"/> Facilities Maps    |
| <input checked="" type="checkbox"/> ICS 205 | <input checked="" type="checkbox"/> Weather Forecast | <input checked="" type="checkbox"/> Finance Message       | <input checked="" type="checkbox"/> Transportation Map |
| <input checked="" type="checkbox"/> ICS 206 | <input checked="" type="checkbox"/> Fire Behavior    | <input checked="" type="checkbox"/> Water Usage           | <input checked="" type="checkbox"/> ICS 214            |
| <input checked="" type="checkbox"/> ICS 208 | <input checked="" type="checkbox"/> Training Message | <input checked="" type="checkbox"/> Fire Supp Repair Plan | <input type="checkbox"/>                               |

**7. Prepared By:** D. Dresselhaus Position/Title: PSC Signature:

**8. Approved by Incident Commander:** Dusty Martin / Albert Yanagisa Signature:

## ORGANIZATION ASSIGNMENT LIST (ICS 203)


<b>1. Incident Name:</b> FRANKLIN		<b>2. Operational Period: Date From:</b> 12/17/2024 <b>Date To:</b> 12/18/2024	
		<b>Time From:</b> 0700 <b>Time To:</b> 0700	
<b>3. Incident Commander(s) and Command Staff:</b>		<b>7. Operation Section:</b>	
IC/UC's	Dusty Martin / Albert Yanagisawa Jennifer Seeloo	Operations	John Fredrick / Drew Smith (T)
Deputy	Andy Turner / Bob Counts Eleni Pappas / Scott Corn (T)	Deputy Operations	Shane Lauderdale / Mike Batham (T) / Shane Frederick (T) Kristian Litz / Derrick Chapman (T) / Brian Riley (T)
Safety Officer	J. Piccinini / J. Kitchens (T) M. McDonald (T)	Night Ops	Erich Schwab
Information Officer	L. Spelman / J. Shaw / W. Oaks	Staging Area	
Liaison Officer	D. Pender / A. Avila / D. Haack	<b>Branch</b>	<b>X / XX</b> <b>Ryan Kinyon (12)</b>
<b>4. Agency/Organization Representatives:</b>		Division/Group	D/H/K Mark Skrainar (12) / Christopher Dubois (T)(12)
Agency/Organization	Name	Division/Group	M/O Marc Bontrager (12) / Lee Elliott (T)(12)
LACo Sheriff Office	Cpt. Rodriguez	Division/Group	S/W Brian Powers (12) / Charles Ferris (T)(12)
CAL FIRE	B. Spelman	Division/Group	
Ventura Co FD	J. Spykerman	Division/Group	
CalOES	G. McKeown	<b>Branch</b>	<b>Suppression Repair</b> <b>Mark Scoville (12)</b>
NPS	T. Sandrini	Division/Group	FSR
CHP	S. Geraty	Division/Group	
CA State Parks	J. Langley	Division/Group	
Community Fire Brig	J. Vandermeulen	Division/Group	
Pepperdine University	N. Taylor	Division/Group	
LACo Animal Control	W. Romero	<b>Branch</b>	
American Red Cross	D. Richman	Division/Group	
CalTrans	P. Zatikyan	Division/Group	
LACo PW	L. Bradley	Division/Group	
LACo Public Health	M. Rogers	Division/Group	
CCC	E. Lopez	Division/Group	
		<b>Branch</b>	
		Division/Group	
<b>5. Planning Section:</b>		Division/Group	
Chief	G. Ozard / R. Stillwagon (T)	Division/Group	
Deputy	D. Dresselhaus (T)	Division/Group	
Resource Unit	D. Newell / J. Rhoads / T. Rye / J. Irving / T. Hullquist (T) / P. Root (T)	Division/Group	
Situation Unit	N. Wallingford / E. Gicker (T)	<b>Branch</b>	
Documentation Unit	P. Zepeda	Division/Group	
Demobilization Unit	C. Lynch	Division/Group	
GISS	D. Funderburg / R. Rametta	Division/Group	
FBAN	J. Pangburn / J. Smutz (T)	Division/Group	
IMET	R. Thompson	Division/Group	
Training Tech Spec	C. Soiza	<b>Air Operations Branch</b>	<b>Director:</b> G. Bradshaw / L. Kalfsbeek
		Air Support Group Supervisor	K. Dossey / R. Gomez / E. Johnson
		Air Tactical Group Supervisor	
<b>6. Logistics Section:</b>		Helibase Manager	R. Bowman
Chief	M. Reich / K. Delos Reyes		
Supply Unit	D. Williams / M. Martinez	<b>8. Finance/Administration Section:</b>	
Facilities Unit	O. Martinez / D. Wilson	Chief	B. Chapin / M. Zaver
Ground Support Unit	H. Meza / R. Walton	Deputy	J. Tapla / D. Haas
Communications Unit	F. Heyfron / G. Grunbaum	Time Unit	T. Holsworth / R. Chesnick
Medical Unit	S. McGary	Procurement Unit	M. Stark / D. Magana
Food Unit	R. McGuire	Comp/Claims Unit	M. Boone / C. Nady
		Cost Unit	D. McTiernan
<b>Prepared By: Name:</b>	D. Dresselhaus	<b>Position/Title:</b>	PSC
<b>ICS 203</b>		<b>Date/Time:</b>	12/16/2024 2300 hours
		<b>Signature:</b>	



# INCIDENT Weather Forecast



**FORECAST NO:** 6  
**PREDICTION FOR:** 24 hour Shift  
**SHIFT DATE:** 12/17/24-12/18/24 (0700-0700)  
**FORECAST ISSUED:** 1216//24 @ 1800

**NAME OF FIRE:** Franklin  
**UNIT:** LAC  
**SIGNED:** Rich Thompson   
**Incident Meteorologist**

## WEATHER DISCUSSION:

**...RED FLAG WARNING FROM 300 PM THIS AFTERNOON UNTIL 600 PM WEDNESDAY...**

Moderate Santa Ana winds will bring widespread critical fire weather conditions to the incident this operational period. North to northeast winds will increase through the day with gusts peaking in the 30-50 MPH range this evening and into Wednesday morning. Relative humidity will peak this morning, then will drop throughout the operational period, bottoming out in the teens by Wednesday morning.

The Red Flag conditions (strong winds and low humidity) will continue through Wednesday afternoon. For Wednesday night and Thursday, the offshore winds will decrease dramatically, but humidity will remain at low levels, resulting in elevated fire weather conditions. For Friday through the weekend, cooler conditions and higher relative humidity is expected.

## WEATHER FORECAST:

**WEATHER:** Mostly clear.

**TEMPERATURES:** Max: 66-76.  
Min: 45-55 except 36-44 wind sheltered areas.

**HUMIDITY:** Min: 15-25%.  
Max: 35-50%. Max RH will occur this morning.

**20 FT WINDS:**

**RIDGETOP -** 0700-1000: North 8-15 MPH Gust 18-25 MPH  
 1000-1900: North to northeast 12-20 MPH Gust 25-40 MPH  
 1900-0700: North to northeast 20-30 MPH Gust 35-50 MPH

**SLOPE/VALLEY -** 0700-1000: North 6-12 MPH Gust 14-22 MPH  
 1000-1900: North to northeast 10-18 MPH Gust 20-35 MPH  
 1900-0700: North to northeast 15-25 MPH Gust 30-45 MPH

**STABILITY/INVERSION:** Below 1000 ft AGL night/morning...3000 ft AGL this afternoon/evening.

**OUTLOOK FOR WEDNESDAY:** **Weather:** Mostly clear.

**Temperatures:** **Highs** 68-78.  
**Lows:** 48-58 except 38-47 wind sheltered areas.

**Humidity:** **Min:** 10-20%. **Max:** 20-35%.

**Wind (20 ft):** **Ridgetop:** North to northeast 20-30 MPH Gust 35-50 MPH decreasing to 10-20 MPH Gust 25-35 MPH in the afternoon.

**Slope/Valley:** North to northeast 15-25 MPH Gust 30-45 MPH decreasing to 8-15 MPH Gust 20-30 MPH in the afternoon.

# FIRE BEHAVIOR FORECAST

FORECAST NUMBER: 6	TYPE OF FIRE: WILDFIRE
FIRE NAME: FRANKLIN	OPERATIONAL PERIOD: 12/17 0700 – 12/18 0700
DATE ISSUED: December 16, 2024	TIME ISSUED: 1900
UNIT: CA-LAC-434928	SIGNED: Jan Smutz, FBAN(T)

**WEATHER SUMMARY: \*\*\*Red Flag Warning in effect Tuesday @ 1500 thru Wednesday @ 1800\*\*\***  
Tuesday: Clear, max temps 66 - 76, min RH 15 - 25%, winds: north to northeast 20 - 30 mph, gusts up to 50 mph  
Min FDFM 5%, Max PIG 60%

\*\*See IMET Weather Forecast for more information\*\*

**TOPOGRAPHY: Elevations:** Sea level to 2,200' **Slopes:** 30%-60+% (Avg. 35%)

### FIRE BEHAVIOR OUTPUTS:

Fuel Type	Rate of Spread (ROS)	Flame Length	Spotting Dist. (Max)	Burn Index (Value - Percentile)
...If your work area includes -	(CH/HR = FPM)	Feet	Miles	244 - 97 <sup>th</sup>
Shrub/Grass mix – 2-3' (Woolsey Fire Scar)	90 - 180	10 - 13	1.0	Based on Santa Monica Mtns. FDRA Value >192 indicates critical conditions
Dense, Heavy Brush – 4-6'+	180 - 240	25 - 35	2.0	

*Fire behavior predictions valid for areas within 10 miles of perimeter*

### FIRE BEHAVIOR NARRATIVE

**GENERAL:**

- Critical Fire Weather:** Conditions forecast for today are consistent with LA County Fire Danger criteria for critical fire conditions: BI above 192, wind greater than 15-35 mph, live fuel moisture critical at 60%. Expect **HIGH RATES OF SPREAD** and **FLAME LENGTH, LONG SPOTTING DISTANCE, and RAPID FIRE GROWTH** from any active fire, whether on the Franklin or a new start in the area.
- Complex Terrain:** Very steep slopes dominate much of the landscape. If fire is established in alignment with slope and wind, expect very high rates of spread. Large drainages, such as the Malibu, Carbon and Corral Canyons channel significant airflow due to diurnal patterns and will influence fire movement across the landscape. They can cause conflicting winds that may lead to erratic fire behavior.
- Slope Reversal:** Slope reversal can occur when the fire is backing downhill, crosses a drainage and becomes head fire moving up the opposite slope, or when the fire is wind-driven down slope into the lower portions of a drainage and the wind shifts to upslope, creating head fire running back up the drainage. This rapid change in fire behavior has caught firefighters off-guard in this area in the past and led to burn-over situations.

**SPECIFIC:**

**Div D:** Areas of isolated heat remain in the heavy fuels of Malibu Canyon and where combined with patches of dirty burn, there is still potential for the fire there to "wake up" and become active. Fuels in Malibu Canyon and to the East are decadent brush over 6' tall, head fire there would be very intense.

**Div H/K:** This portion of the line has not shown much residual heat for several days. Remember the brush remains very dry and be prepared for the unexpected.

**Div M/O:** With the patchy, discontinuous burn in many of these areas, there may be hidden sources of heat that could potentially threaten improvements and public safety. Remain vigilant in patrols.

**Div S/W:** Due to the steep terrain, some portions of the line may be extremely difficult to access and secure. Those will be the most important places to check for and suppress any remaining heat sources.

**AIR OPERATIONS:** Expect good visibility around the fire throughout the day. Be aware of potential turbulence and wind shear with high winds.

Sunset: 4:48 pm                      Sunrise: 6:56 am

**SAFETY:** Maintain a high level of situational awareness. Rapid fire growth may cut off your escape routes. Keep LCES in place and know what your contingency and emergency plans are.

# SAFETY MESSAGE

## FRANKLIN INCIDENT

12/17/2024 0700-0700

Each safety message is designed to be a tool for a daily tailgate safety discussion.

### CRITICAL FIRE CONDITIONS

#### Watch Outs - Potential critical fire weather entering the area

- Live and dead fuels can be receptive to fire spread with the potential high winds
- Extreme fire behavior and rapid rates of spread may occur in these areas, when winds are extreme
- Fire behavior changes due to current fire weather indices resulting in explosive fuels

#### Mitigation - Have a heightened amount of situational awareness

- Brief, Brief, Brief! Brief at all levels of your organization and brief throughout the shift
- Take tactical pauses, evaluate conditions and brief on current and predicted fire behavior
- Make sure tactics are appropriate during the elevated fire weather event

### OPERATIONAL TEMPO

#### Watch Out – The fire's progress has slowed, but there is a high potential for extreme fire spread

- Fire growth of existing fire or new starts has heightened
- Complacency during the mop-up stages can exist
- The weather can change at a moment's notice

#### Mitigation- Slow down and think before acting

- Maintain situational awareness at all times
- Keep crews engaged at all times
- Monitor the weather at all times. Look for high winds and low RH's

### CIVILIAN DRIVING

#### Watch Out – People are repopulating the area

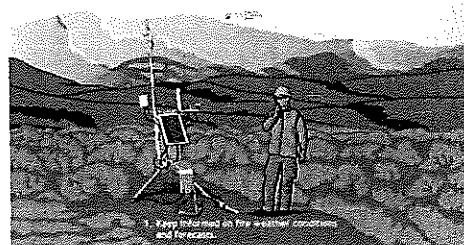
- Homeowners are anxiously wanting to get home quickly
- Some roads are closed, giving the residents a false sense of freedom on the road
- People may not be focused on the current task as they think about their homes and possible damages

#### Mitigation- Stay alert and maintain situational awareness

- Be diligent and drive defensively
- Post a lookout when working around roadways
- Notify law enforcement if the situation becomes a safety issue during your operations

# HYDRATE!

(Cool weather gives you a false sense of hydration)



Keep informed on fire weather conditions and forecasts.

# CAL FIRE INCIDENT MANAGEMENT TEAM 4

## FRANKLIN INCIDENT RISK ANALYSIS ICS 215A

BRANCH	HAZARDOUS ACTIONS/ CONDITIONS	MITIGATIONS/WARNINGS/REMEDIES
IA/ ALL	<b>CRITICAL FIRE BEHAVIOR</b>	<ul style="list-style-type: none"> <li>• Review "Severe Fire Behavior Potential" (IRPG p.76).</li> <li>• Maintain adequate escape routes and safety zones. Advise all personnel if these are compromised or changed.</li> <li>• Make sure tactics are appropriate during critical fire weather events</li> </ul>
DIV D, H, S, W	<b>STEEP TERRAIN</b>	<ul style="list-style-type: none"> <li>• Ensure proper footing and maintain spacing between crew members.</li> <li>• Develop a plan for medical emergency extrication utilizing resources on your Branch.</li> </ul>
ALL	<b>DRIVING HAZARDS</b>	<ul style="list-style-type: none"> <li>• <b>Watch your speeds.</b></li> <li>• Drive defensively! Expect the unexpected.</li> <li>• Watch for civilian traffic in fire areas</li> <li>• Be aware of congested traffic in and around base camp</li> </ul>
DEMOB	<b>DEMOBILIZATION</b>	<ul style="list-style-type: none"> <li>• Conduct vehicle walk around and secure loose items</li> <li>• Always wear seat belts</li> <li>• Monitor drivers for fatigue</li> </ul>
DIV D, H, S, W	<b>ROCK FALL</b>	<ul style="list-style-type: none"> <li>• Watch above for rolling material</li> <li>• If you encounter rocks on the road, reduce speed and remain vigilant</li> </ul>
ALL	<b>COMPLACENCY</b>	<ul style="list-style-type: none"> <li>• Keep crews mentally engaged</li> <li>• Ensure clear leaders' intent</li> <li>• Ensure everyone gets a briefing</li> </ul>
ALL	<b>CHANGING WEATHER CONDITIONS</b>	<ul style="list-style-type: none"> <li>• Monitor current weather conditions and obtain forecast.</li> <li>• Wind events can adversely change the fire environment from what was seen just hours ago.</li> <li>• Adjust tactics and LCES as needed to respond to changing weather conditions.</li> </ul>
ALL	<b>COMMUNICATION</b>	<ul style="list-style-type: none"> <li>• Check the communication plan for frequency assignments.</li> <li>• Be clear and concise when talking on the radio.</li> <li>• Use human repeaters as needed.</li> </ul>
ALL	<b>PERSONNEL SAFETY</b>	<ul style="list-style-type: none"> <li>• All personnel are responsible for their personal safety.</li> <li>• Be sure to wear all required PPE while on the fire line.</li> <li>• Provide sufficient rest during the work cycle.</li> <li>• Ensure accountability of your subordinates</li> </ul>
DIV O, M	<b>HAZARDOUS STRUCTURES</b>	<ul style="list-style-type: none"> <li>• Follow Structure Size Up (IRPG p.12).</li> <li>• Be aware of propane tank and natural gas hazards.</li> <li>• Scout areas prior to committing resources to work assignments.</li> <li>• Void spaces (pools) may be hidden by ash and debris.</li> <li>• Treat all downed power lines as energized.</li> </ul>
ALL	<b>HYDRATION</b>	<ul style="list-style-type: none"> <li>• Drink water before, during and after each shift.</li> <li>• Be alert for signs of heat stress in yourself and others.</li> <li>• Cooler temperatures make it easier to become dehydrated without realizing it</li> </ul>

Date Prepared: 12/16/2024  
 Prepared by: *Matt McDonald* SOF1

Operational Period: 12/17/2024-12/18/2024  
 0700-0700



# ASSIGNMENT LIST (ICS 204 WF)

CONTROLLED UNCLASSIFIED  
INFORMATION//BASIC

<b>1. Incident Name:</b> <b>FRANKLIN</b>	<b>2. Operational Period:</b> Date From: 12/17/24    Date To: 12/18/24 Time From: 0700        Time To: 0700	<b>3. Branch</b> <b>Division</b> <b>X / XX</b> <b>D/H/K</b>  Page 1 of 1        Delta
---	---	--

<b>4. Operations Personnel:</b>			
Operations Section Chief: <b>John Fredrick / Drew Smith (T)</b>	Night Ops: <b>Erich Schwab</b>		
Branch Director: <b>Ryan Kinyon (12)</b>	Branch Safety: <b>Peter Adamo (12) / Louie Cervantes (12)</b>		
Division/Group Supervisor: <b>Mark Skrainar (12) / Christopher Dubois (T)(12)</b>	Air Attack:		

<b>5. Resources Assigned:</b>		** Resources Below in Bold are 12 Hour **					
Resource Identifier	ALS	LWD	Leader	Personnel	Request #	Hours	Reporting Location
STC BDU 9351C			<b>NICHOLSON, BRIAN</b>	18	<b>E-44</b>	0700-1900	DP 10
STC LAC 1151C	X		<b>HARTER, KEITH</b>	22	<b>E-70</b>	0700-1900	DP 10
STG RRU 9315G (CDCR)**			<b>ARBGAST, DANIEL</b>	30	<b>C-31</b>	0700-1900	DP 10
STG TUU 9413G (CDCR)**			<b>WILLIAMS, BRANDON</b>	33	<b>C-30</b>	0700-1900	DP 10
STG LAC 1174G (CDCR)			<b>KOCH, DAN</b>	25	<b>C-18</b>	0700-1900	DP 10
FEMP BORUM	X		<b>BORUM, CONNOR</b>	1	<b>O-270</b>	0700-1900	DP 10
FEMT LOMBARDI			<b>LOMBARDI, BRIAN</b>	1	<b>O-278</b>	0700-1900	DP 10

**6. Work Assignments:**  
 Hold and improve control lines.  
 Mop up all visible heat sources.  
 Backhaul excess trash/hose/water to DP 10 or DP 22.

**7. Special Instructions:**  
 \*\* Indicates a resource that is available for Initial Attack Response.

<b>8. Communications</b>								
Name	Ch	Function	Rx Freq	Rx Tone	Tx Freq	Tx Tone	Mode	Notes
LAC V-1	1	COMMAND	152.1500	(T14) 151.4	158.6100	(T14) 151.4	A	COMMAND ALL DIVS
CDF T37	8	TACTICAL	151.1525	(T17) 67.0	151.1525	(T17) 67.0	A	BRANCH X / XX
CDF A/G5	14	A/G	159.2700	(T16) 192.8	159.2700	(T16) 192.8	A	AIR TO GROUND
CALCORD	15	TACTICAL	156.0750	(T6) 156.7	156.0750	(T6) 156.7	A	
AIRGUARD	16	EMERGENCY	168.6250	0.0	168.6250	(T1) 110.9	A	

<b>9. Prepared by: Name:</b> D. Newell	RESL	Signature:
<b>ICS 204</b>	Date/Time: 12/16/2024 2200	Personnel Count: 130

# ASSIGNMENT LIST (ICS 204 WF)

CONTROLLED UNCLASSIFIED  
INFORMATION//BASIC

<b>1. Incident Name:</b> <b>FRANKLIN</b>	<b>2. Operational Period:</b> Date From: 12/17/24    Date To: 12/18/24 Time From: 0700    Time To: 0700	<b>3. Branch</b> <b>Division</b> <b>X / XX</b> <b>M/O</b>
---	---	--

<b>4. Operations Personnel:</b>		Page 1 of 1    Mike
Operations Section Chief: <b>John Fredrick / Drew Smith (T)</b>	Night Ops: <b>Erich Schwab</b>	
Branch Director: <b>Ryan Kinyon (12)</b>	Branch Safety: <b>Peter Adamo (12) / Louie Cervantes (12)</b>	
Division/Group Supervisor: <b>Marc Bontrager (12) / Lee Elliott (T)(12)</b>	Air Attack:	

<b>5. Resources Assigned:</b>		<b>** Resources Below in Bold are 12 Hour **</b>					
Resource Identifier	ALS	LWD	Leader	Personnel	Request #	Hours	Reporting Location
STA LAC 1103A	X		<b>FRANK INFANTE</b>	21	E-71	0700-1900	DP 23
STC BEU 9460C**			<b>GAINES, PAUL</b>	16	E-202	0700-1900	DP 23
STC RRU 9310C**			<b>BALLINGER, MIKE</b>	17	E-48	0700-1900	DP 23

**6. Work Assignments:**  
 Perform tactical patrol and mop-up around structures.  
 Mop up all visible heat sources.  
 Backhaul excess trash/hose/water to DP 23.  
 Be aware of and assist with repopulation activities in the area.

**7. Special Instructions:**  
 \*\* Indicates a resource that is available for Initial Attack Response.

<b>8. Communications</b>								
Name	Ch	Function	Rx Freq	Rx Tone	Tx Freq	Tx Tone	Mode	Notes
LAC V-1	1	COMMAND	152.1500	(T14) 151.4	158.6100	(T14) 151.4	A	COMMAND ALL DIVS
CDF T38	9	TACTICAL	159.3375	(T17) 67.0	159.3375	(T17) 67.0	A	BRANCH X / XX
CDF A/G5	14	A/G	159.2700	(T16) 192.8	159.2700	(T16) 192.8	A	AIR TO GROUND
CALCORD	15	TACTICAL	156.0750	(T6) 156.7	156.0750	(T6) 156.7	A	
AIRGUARD	16	EMERGENCY	168.6250	0.0	168.6250	(T1) 110.9	A	

**9. Prepared by: Name:**                      D. Newell                      RESL                      Signature:

**ICS 204**                      Date/Time: 12/16/2024 2200                      Personnel Count: 54

## ASSIGNMENT LIST (ICS 204 WF)

CONTROLLED UNCLASSIFIED  
INFORMATION//BASIC

<b>1. Incident Name:</b>	<b>2. Operational Period:</b>	<b>3. Branch</b>	<b>Division</b>
<b>FRANKLIN</b>	Date From: 12/17/24      Date To: 12/18/24 Time From: 0700                  Time To: 0700	<b>X / XX</b>	<b>S/W</b>
<b>4. Operations Personnel:</b>		<b>Page 1 of 1</b>	<b>Sierra</b>

Operations Section Chief: <b>John Fredrick / Drew Smith (T)</b>	Night Ops: <b>Erich Schwab</b>
Branch Director: <b>Ryan Kinyon (12)</b>	Branch Safety: <b>Peter Adamo (12) / Louie Cervantes (12)</b>
Division/Group Supervisor: <b>Brian Powers (12) / Charles Ferris (T)(12)</b>	Air Attack:

5. Resources Assigned:	** Resources Below in Bold are 12 Hour **						
Resource Identifier	ALS	LWD	Leader	Personnel	Request #	Hours	Reporting Location
STC BDU 9350C			HOSTETTER, ERIK	21	E-43	0700-0700	DP 24
<b>STG BDU 9351G (CDCR)</b>			<b>HATCH, JOE</b>	<b>38</b>	<b>C-9</b>	<b>0700-1900</b>	<b>DP 24</b>
<b>STG BDU 9357G (CDCR)</b>			<b>SKERSTON, BRIAN</b>	<b>33</b>	<b>C-10</b>	<b>0700-1900</b>	<b>DP 24</b>
<b>STG LAC 1180G (FF)</b>			<b>RAMOS, JASON</b>	<b>30</b>	<b>C-19</b>	<b>0700-1900</b>	<b>DP 24</b>

**6. Work Assignments:**

Hold and improve control lines.  
Mop up all visible heat sources.  
Perform tactical patrol and mop-up around structures.  
Backhaul excess trash/hose/water to DP 24.

**7. Special Instructions:**

8. Communications								
Name	Ch	Function	Rx Freq	Rx Tone	Tx Freq	Tx Tone	Mode	Notes
LAC V-1	1	COMMAND	152.1500	(T14) 151.4	158.6100	(T14) 151.4	A	COMMAND ALL DIVS
CDF T34	5	TACTICAL	159.2475	(T17) 67.0	159.2475	(T17) 67.0	A	BRANCH X / XX
CDF A/G5	14	A/G	159.2700	(T16) 192.8	159.2700	(T16) 192.8	A	AIR TO GROUND
CALCORD	15	TACTICAL	156.0750	(T6) 156.7	156.0750	(T6) 156.7	A	
AIRGUARD	16	EMERGENC	168.6250	0.0	168.6250	(T1) 110.9	A	

**9. Prepared by: Name:** D. Newell      RESL      Signature:

**ICS 204**      Date/Time: 12/16/2024 2200      Personnel Count: 122

## ASSIGNMENT LIST (ICS 204 WF)

CONTROLLED UNCLASSIFIED  
INFORMATION/BASIC

1. Incident Name: <b>FRANKLIN</b>		2. Operational Period: Date From: 12/17/24    Date To: 12/18/24 Time From: 0700    Time To: 0700				3. Branch: <b>Suppression Repair</b>		Division: <b>FSR</b>			
4. Operations Personnel:						Page 1 of 1					
Operations Section Chief: <b>John Fredrick / Drew Smith (T)</b>			Night Ops: <b>Erich Schwab</b>			Branch Director: <b>Mark Scoville (12)</b>			Branch Safety:		
Division/Group Supervisor:			Air Attack:								
5. Resources Assigned:					<b>** Resources Below in Bold are 12 Hour **</b>						
Resource Identifier	ALS	LWD	Leader	Personnel	Request #	Hours	Reporting Location				
STG LAC 1173G (CDCR)			<b>SMITH, EDWARD</b>	30	<b>C-16</b>	<b>0700-1900</b>	<b>DP 22</b>				
STG LAC 1182G (FF)			<b>MCLAUGHLIN, DONALD</b>	30	<b>C-20</b>	<b>0700-1900</b>	<b>DP 22</b>				
6. Work Assignments: Implement Suppression Repair Plan.											
7. Special Instructions:											
8. Communications											
Name	Ch	Function	Rx Freq	Rx Tone	Tx Freq	Tx Tone	Mode	Notes			
LAC V-1	1	COMMAND	152.1500	(T14) 151.4	158.6100	(T14) 151.4	A	COMMAND ALL DIVS			
CDF T35	6	TACTICAL	151.4675	(T17) 67.0	151.4675	(T17) 67.0	A	SUPPRESSION REPAIR			
CDF A/G5	14	A/G	159.2700	(T16) 192.8	159.2700	(T16) 192.8	A	AIR TO GROUND			
CALCORD	15	TACTICAL	156.0750	(T6) 156.7	156.0750	(T6) 156.7	A				
AIRGUARD	16	EMERGENC	168.6250	0.0	168.6250	(T1) 110.9	A				
9. Prepared by: Name:		D. Newell			RESL		Signature:				
<b>ICS 204</b>		Date/Time: 12/16/2024 2200				Personnel Count: 60					

**AIR OPERATIONS SUMMARY ICS-220**

Time Prepared  
1900

Date Prepared  
Monday, December 16, 2024

Prepared By  
Kenny Dossey

Incident Name / Number  
FRANKLIN / CA-LAC-434928

Sunrise 6:53 Startup 7:23 Cutoff 16:19 Sunset 16:49

Shutdown  
17:19

Operational Period - Date  
Tuesday December 17, 2024

Operational Period - Time  
0700-0700

**General Remarks, Safety Notes, Hazards, Air Operations Special Equipment, etc.**

TRACK ALL DIPSITE LOCATIONS / NUMBER OF DIPS / GALLONS TAKEN.

TRACK ALL DROP LOCATIONS / NUMBER OF DROPS / GALLONS DROPPED

All GPS DATA TO BE COLLECTED IN DEGREES, MINUTES, DECIMAL MINUTES FORMAT.

AVOID Aerial Application of Retardant / Foam / Agent within 300' of Waterways, Bodies of Water, etc.

If Retardant / Foam / Agent is Dropped Within These Areas Immediately Notify the AOBD and Provide the Following Information: Lat / Long, Estimated Number of Gallons and a Map Detailing The Area.

**Helibase Information**

Name Camarillo  
Latitude 34° 12.84  
Longitude 122° 15.13

Name  
Latitude  
Longitude  
(use page 2 if needed)

**TFR Information**

Request # A-83  
Polygon: NM  
Altitude: 6500 MSL  
Centerpoint: SEE Lat  
NOTAMS: NOTAMS Long  
Frequency 4/6114 123.1750  
<http://tfr.faa.gov/tfr2/list.html>

**Rescue Ship Information**

	Day Heist	Night Heist
Name	C14	C14
Phone	213-435-7648	(213) 435-7648
Make/Model	Bell 412	Bell 412
Location	Barton	Barton

Request Procedure for These Aircraft:  
Incident Communications  
See Medical Plan For Additional Info

Frequencies	RX	RX Tone	TX	TX Tone	AM / FM	Position	Name	Phone	Trainee	Phone
AIR TACTICS	166.6125		166.6125		FM	AOBD	Greg Bradshaw	(949) 887-2841		
AIR / AIR Rotary Wing	132.775		132.775		AM	AOBD	Logan Kalfsbeek	(916) 558-8572		
Air / Air Brief	127.0750		127.0750		AM	ASGS	Kenny Dossey	(949) 322-8815		
Secondary Rotor Victor						ASGS	Ray Gomez	(626) 377-7406		
AIR / AIR -TFR	123.1750		123.1750		AM	ASGS	Ezra Johnson	(916) 956-8422		
AIR / GROUND (Command)	159.2700	(T16) 192.8	159.2700	(T16) 192.8	FM	HEBM	Rick Boman	(760) 473-7022		
A/G Tactical:										
COMMAND	152.1500	(T14) 151.4	158.6100	(T14) 151.4	FM	HLCO	Kyle Tolosano	(530) 605-7334		
Camarillo Tower	128.2000		128.2000		AM					
DECK	163.1000		163.1000		FM					
TOLC	123.0250		123.0250		AM					
CALCORD - MEDICAL	156.0750	(T6) 156.7	156.0750	(T6) 156.7	FM					
AIRGUARD - Emergency Only	168.6250		168.6250	(T1) 110.9	FM					

**HELICOPTERS ( Use page 2 if Needed )**

**HELICOPTERS ( Use page 2 if Needed )**

FAA #	Type	Make/Model	Helibase	Avail	Start	Remarks	FAA #	Type	Make/Model	Helibase	Avail	Start	Remarks
3BH	1	UH-60	Camarillo	0700	0700	Long Line A-59							
H532	2	205++	Camarillo	0700	0700	Tank A-53							
1NC	3	429	Camarillo	0700	0700	HLCO/Recon A-63							
509/1HX	3	Bell 407	Camarillo	0700	0700	HLCO A-55							
** Night Ops Helicopters (NVG) **													

**Mobile Retardant Base (MRB) & Torch Base (TB) Information**

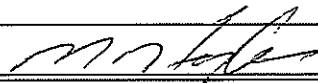
Name	Manager	Mgr Phone	Latitude	Longitude	Address

**Unmanned Aircraft Systems (UAS)**

Identifier	Pilot	Trainee	Pilot Phone	Remarks / Capabilities

# ICS 205 - INCIDENT RADIO COMMUNICATIONS PLAN

CONTROLLED UNCLASSIFIED  
INFORMATION//BASIC

<b>1. Incident Name:</b> FRANKLIN Incident Channels			<b>2. Date/Time Prepared</b> Date: 12/16/2024 Time: 1930			<b>3. Operational Period:</b> Date From: 12/17/24 Time From: 0700 Date To: 12/18/24 Time To: 0700			
<b>4. Communications</b>									
Ch#	Function	Name	Assigned To	Rx Freq	Rx Tone	Tx Freq	Tx Tone	Mode	Notes
1	COMMAND	LAC V-1	ALL DIVS	152.1500	(T14) 151.4	158.6100	(T14) 151.4	A	COMMAND ALL DIVS
2									
3									
4									
5	TACTICAL	CDF T34	DIV S / W	159.2475	(T17) 67.0	159.2475	(T17) 67.0	A	BRANCH X / XX
6	TACTICAL	CDF T35	FSR	151.4675	(T17) 67.0	151.4675	(T17) 67.0	A	SUPPRESSION REPAIR
7	TACTICAL	CDF T36	UNASSIGNED	159.3225	(T17) 67.0	159.3225	(T17) 67.0	A	UNASSIGNED
8	TACTICAL	CDF T37	DIV D / H / K	151.1525	(T17) 67.0	151.1525	(T17) 67.0	A	BRANCH X / XX
9	TACTICAL	CDF T38	DIV M / O	159.3375	(T17) 67.0	159.3375	(T17) 67.0	A	BRANCH X / XX
10									
11									
12									
13									
14	A/G	CDF A/G5	ALL DIVS	159.2700	(T16) 192.8	159.2700	(T16) 192.8	A	AIR TO GROUND
15	TACTICAL	CALCORD	ALL DIVS	156.0750	(T6) 156.7	156.0750	(T6) 156.7	A	CALCORD
16	EMERGENCY	AIRGUARD	ALL DIVS	168.6250	0.0	168.6250	(T1) 110.9	A	EMERGENCY
17									
18									
19									
20	EMERGENCY	AIRGUARD	ALL DIVS	168.6250	0.0	168.6250	(T1) 110.9	A	EMERGENCY
<b>5. Special Instructions</b>									
***VERSIONS V1 AND V2 ARE BOTH VALID*** Communications Phone Number: 916-883-0932									
<b>6. Prepared by (Communications Unit Leader): Name: Mike Heyfron</b>						Signature: 			
ICS 205 - CONTROLLED UNCLASSIFIED INFORMATION//BASIC						NIMS IAP		Date/Time: 12/16/24 1930	

12

# ICS 205 - INCIDENT RADIO COMMUNICATIONS PLAN

CONTROLLED UNCLASSIFIED  
INFORMATION//BASIC

<b>1. Incident Name:</b> <b>FRANKLIN</b> <b>Incident Channels</b>			<b>2. Date/Time Prepared</b> Date: 12/16/2024 Time: 1930			<b>3. Operational Period:</b> Date From: 12/17/24      Date To: 12/18/24 Time From: 0700          Time To: 0700			
<b>4. Communications</b>									
Ch#	Function	Name	Assigned To	Rx Freq	Rx Tone	Tx Freq	Tx Tone	Mode	Notes
1	COMMAND	LAC V-1	COMMAND	152.1500	(T14) 151.4	158.6100	(T14) 151.4	A	SUSANA ZONE 30
2	COMMAND	LAC V-2	COMMAND	152.2400	(T14) 151.4	158.7000	(T14) 151.4	A	SUSANA ZONE 30
3	COMMAND	LAC V-3	COMMAND	152.5400	(T14) 151.4	157.8000	(T14) 151.4	A	SUSANA ZONE 30
4	COMMAND	LAC V-4	COMMAND	152.5700	(T14) 151.4	157.8300	(T14) 151.4	A	SUSANA ZONE 30
5	COMMAND	LAC V-5	COMMAND	152.7800	(T14) 151.4	158.0400	(T14) 151.4	A	SUSANA ZONE 30
6	COMMAND	VNC C 2	COMMAND	154.3250	(T21) 79.7	155.8350	(T21) 79.7	A	SUSANA ZONE 30
7	COMMAND	VNC C 8	COMMAND	155.9850	(T31) 186.2	154.7250	(T31) 186.2	A	SUSANA ZONE 30
8	TACTICAL	VFIRE 22	I/A	154.2650	(T6) 156.7	154.2650	(T6) 156.7	A	SUSANA ZONE 30
9	TACTICAL	VFIRE 23	I/A	154.2950	(T6) 156.7	154.2950	(T6) 156.7	A	SUSANA ZONE 30
10	TACTICAL	VFIRE 24	I/A	154.2725	(T6) 156.7	154.2725	(T6) 156.7	A	SUSANA ZONE 30
11	TACTICAL	VFIRE 25	I/A	154.2875	(T6) 156.7	154.2875	(T6) 156.7	A	SUSANA ZONE 30
12	TACTICAL	VFIRE 26	I/A	154.3025	(T6) 156.7	154.3025	(T6) 156.7	A	SUSANA ZONE 30
13	A/G	LAC A/G	AIR TO GROUND	154.4000	(T14) 151.4	154.4000	(T14) 151.4	A	SUSANA ZONE 30
14	A/G	LFD A/G	AIR TO GROUND	154.8300	(T9) 100.0	154.8300	(T9) 100.0	A	SUSANA ZONE 30
15	A/G CMD	VNC A/G	AIR TO GROUND	154.2350	(T7) 167.9	154.2350	(T7) 167.9	A	SUSANA ZONE 30
16	EMERGENCY	AIRGUARD	ALL DIVS	168.6250	0.0	168.6250	(T1) 110.9	A	SUSANA ZONE 30
17	INITIAL ATTACK ONLY								
18	INITIAL ATTACK ONLY								
19	INITIAL ATTACK ONLY								
20	EMERGENCY	AIRGUARD	ALL DIVS	168.6250	0.0	168.6250	(T1) 110.9	A	EMERGENCY
<b>5. Special Instructions</b>									
***SUSANA LOAD IS IN GROUP 30 IN STATE LOAD FOR IA***									
<b>6. Prepared by (Communications Unit Leader): Name: Mike Heyfron</b>						Signature:			
ICS 205 - CONTROLLED UNCLASSIFIED INFORMATION//BASIC					NIMS IAP	Date/Time: 12/16/24		1930	

13

## MEDICAL PLAN (ICS 206)

<b>1. Incident Name:</b> FRANKLIN	<b>2. Operational Period:</b> Date From: 12/17/24 Date To: 12/18/24 Time From: 0700 Time To: 0700
--------------------------------------	--

3. Medical Aid Stations:			
Name	Location	Contact Number/Freq	Level of Service
CAL MAT	ICP	CMD	<input checked="" type="checkbox"/> ALS
MERT	CAMP 16	CMD	<input checked="" type="checkbox"/> ALS

4. Transportation (indicate air or ground):				
Ambulance Service	Air or Ground	Location	Contact Number/Freq	Level of Service
McCORMICK	GROUND	LOCAL PROVIDER	CMD	<input checked="" type="checkbox"/> BLS
COPTER 14	AIR	BARTON AIR FIELD	CMD	<input checked="" type="checkbox"/> ALS

5. Hospitals:								
Hospital Name	Address,		Contact Number(s)/ Frequency	Travel Time		Trauma Center	Burn Center	Helipad
	Lat & Long	Helipad		Air	Ground			
RONALD REAGAN MED CTR	757 WESTWOOD PLZ LOS ANGELES 90095 N34 03.903 W118 26.545		310-208-5387	7	30	Level 1	<input type="checkbox"/>	<input checked="" type="checkbox"/>
TORRENCE MEMORIAL	330 W LOMITA BLVD TORRANCE 90505 N33 48.556 W118 20.739		310-530-7631	13	45	Level 1	<input checked="" type="checkbox"/>	<input checked="" type="checkbox"/>
UCLA SANTA MONICA	1250 16th STREET SANTA MONICA 90404		424-259-8401	N/A	20	Level 3	<input type="checkbox"/>	<input type="checkbox"/>

6. Special Medical Emergency Procedures	
<p><b>Emergency Frequency:</b> 15 [1] CALCORD 156.075 156.075</p> <p><u>Line Emergency Protocol</u> Crew Supervisor will contact Division Supervisor with patient complaint/condition and location.</p> <ul style="list-style-type: none"> <li>• Division or Group Supervisor Contacts:               <ol style="list-style-type: none"> <li>1. Closest EMS resource</li> <li>2. Communications Unit</li> </ol> </li> <li>• Communications Unit Contacts:               <ol style="list-style-type: none"> <li>1. Ground or Air ambulance as requested.</li> <li>2. Operations</li> <li>3. Safety</li> <li>4. Medical Unit Leader</li> </ol> </li> <li>• Division Supervisor or designee will serve as point of contact and run medical emergency on assigned channel.</li> <li>• Communications Unit will clear the Command channel for emergency traffic as needed for duration of the need.</li> </ul> <p><u>Camp Emergency</u> Contact Medical Unit with patient complaint/condition and location. Medical staff will respond and contact:</p> <ol style="list-style-type: none"> <li>1. Communications</li> <li>2. Safety</li> <li>3. Logistics</li> <li>4. Operations</li> <li>5. Crew Supervisor</li> <li>6. Comp/Claims</li> </ol>	<p><u>Injury Reporting Procedures</u></p> <p>The following information should be relayed to the Communications Unit:            Nature of Emergency: _____            Chief Complaint: _____            Location of Patient: _____            Patient Age: _____            Patient Unit ID: _____            Point of Contact ID: _____            Resource Needs: _____</p> <p>Transportation Requested by: Air _____ Ground _____            Point of Pick-Up: _____            Lat: _____            Long: _____</p> <p>Is an EMT or Paramedic with Patient: Yes _____ No _____</p> <p style="text-align: center;"><b>FRANKLIN COMMUNICATIONS 916-883-0932</b></p> <p style="text-align: center;"><b>All Emergencies:</b>  <b>Secure the area and identify witnesses for later investigation.</b>  <b>Keep accurate log of events.</b></p>

Check box if aviation assets are utilized for rescue. If assets are used, coordinate with Air Operations.

<b>7. Prepared by (Medical Unit Leader):</b> S. McGary	<b>Signature:</b>
---	-------------------

<b>8. Approved by (Safety Officer):</b> J. Piccinini	<b>Signature:</b>
---	-------------------

ICS 206	NIMS IAP	Date/Time: 12/16/2024 1700
---------	----------	----------------------------





# FRANKLIN FIRE

Incident Information/Media Line: (323) 881-2450

CURRENT INCIDENT STATUS	
Incident Start Date: December 9, 2024	Incident Start Time: 11:50 p.m.
Cause:	Acres:
Containment:	Total Personnel:

### MEDIA

The California State Penal Code Section 409.5(d) allows the news media to enter scenes of disaster, riot, or civil disturbance. Properly identified members of the news media should not be restricted from entering locations specified within the code. However, this does not include crime scenes, private property and does not imply that the news media may interfere with incident operations while they are in the areas of concern.

### CAL FIRE SOCIAL MEDIA POLICY

When assigned to a CAL FIRE incident, you will adhere to the CAL FIRE Social Media Policy, Section 0691



### PHOTOGRAPHS AND VIDEOS OF INCIDENT

The Public Information Office would like copies of the video and pictures that you safely took while not in an emergency, fire suppression activity or in an overhead assignment. Bring your video and pictures to the Public Information trailer; they will be reviewed and possibly uploaded to our many CAL FIRE social media sites. Remember, we don't want photographs or videos that depict unsafe, unprofessional, or embarrassing circumstances, which are a serious breach of ethics.



### LOST AND FOUND

The Information Section will manage lost and found items for the incident. Items can be dropped off and picked up at the PIO Trailer.

### MAIL SERVICE

The Information Section can assist you with mail service. Please have packages sent to the address below:

**Base Camp Mailing Address**  
**ATTN: Recipients Name and O-number**  
**Zuma Beach**  
**30050 Pacific Coast Highway**  
**Malibu, CA 90265**

## ***TRAINING SPECIALIST MESSAGE***

***All Training Documentation Packages must be “closed out” with the TNSP no later than Wednesday December 17<sup>th</sup> at 1800 Hrs.***

**Bring the following to the Training Closeout:**

- Completed work in your Task Book
- Completed Performance Evaluation (ICS 225)
- Completed Evaluator’s Recommendation Letter

Forms are available at the TNSP Desk

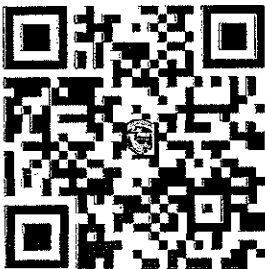
Claudia Soiza  
949.632.7813  
Training Specialist

## **FRANKLIN INCIDENT FINANCE**

- **CAL FIRE PERSONNEL** – make sure you have started your eFC-33's and update after each shift. Please make sure EPay schedules are up to date.
- **HIRED EQUIPMENT SUPPLIERS** – Report to Check in, then report to the Time Unit and drop off your agreements.
- **SHIFT TICKET BOOKS** - for line supervisors are available in the Time Unit (agency personnel only).
- **DIVISION / GROUP – LINE SUPERVISORS:** Please make sure to turn in hired equipment shift tickets at the end of each shift

**For the CAL FIRE eShift Ticket Application use the QR Codes Below**

**CAL FIRE  
eShift Ticket  
QR Code**



**CAL FIRE  
User Guide Access  
QR Code**



**CAL FIRE  
eShift Ticket  
Feedback QR**





FIRE SUPPRESSION REPAIR & REHABILITATION PLAN

**FRANKLIN INCIDENT**

CA-LAC-434928

Fire Suppression Repair will occur on dozer lines, hand lines, roads, and other areas utilized by fire suppression resources. The purpose of the repair is to mitigate possible adverse effects to resources resulting from fire suppression activities.

**Instructions for suppression repair during mop-up**

Dozer operators and crews shall install waterbreaks (waterbars) on all fire lines as well as secondary access roads while performing mop-up operations. Dozer lines shall have the berms pulled and waterbreaks installed to minimize erosion.

Scattered trash shall be collected and deposited in trash piles. Trash piles shall be removed and placed at drop points either before or while hose lays are collected. Police your areas.

**Inventory and Mapping**

Suppression overhead and other personnel shall note rehabilitation needs and report them to the Suppression Repair Lead Tim Montgomery at (831) 601-6547.

**Objectives**

- Install waterbreaks while crews and dozers are actively onsite on roads and trails damaged by fire suppression. Waterbreaks shall have proper angle and open outlets to insure effective drainage.
- Repair damaged fences (remember, those portions damaged by suppression efforts, not by the fire itself).
- Restore berms and barriers on roads opened for suppression activities previously abandoned.
- Ensure that drainage is provided at crossings, ditch drains etc.
- Complete repair work prior to final demobilization.
- Clean culverts and drainage facilities clogged with soil and debris deposited during suppression activities; it is likely necessary to use hand tools versus dozer blades to accomplish this task.

**Staging Areas/Safety Zones**

- Remove debris deposited during suppression activities, including flagging and signs.
- Install cross drains.
- Remove berms created during suppression activities.

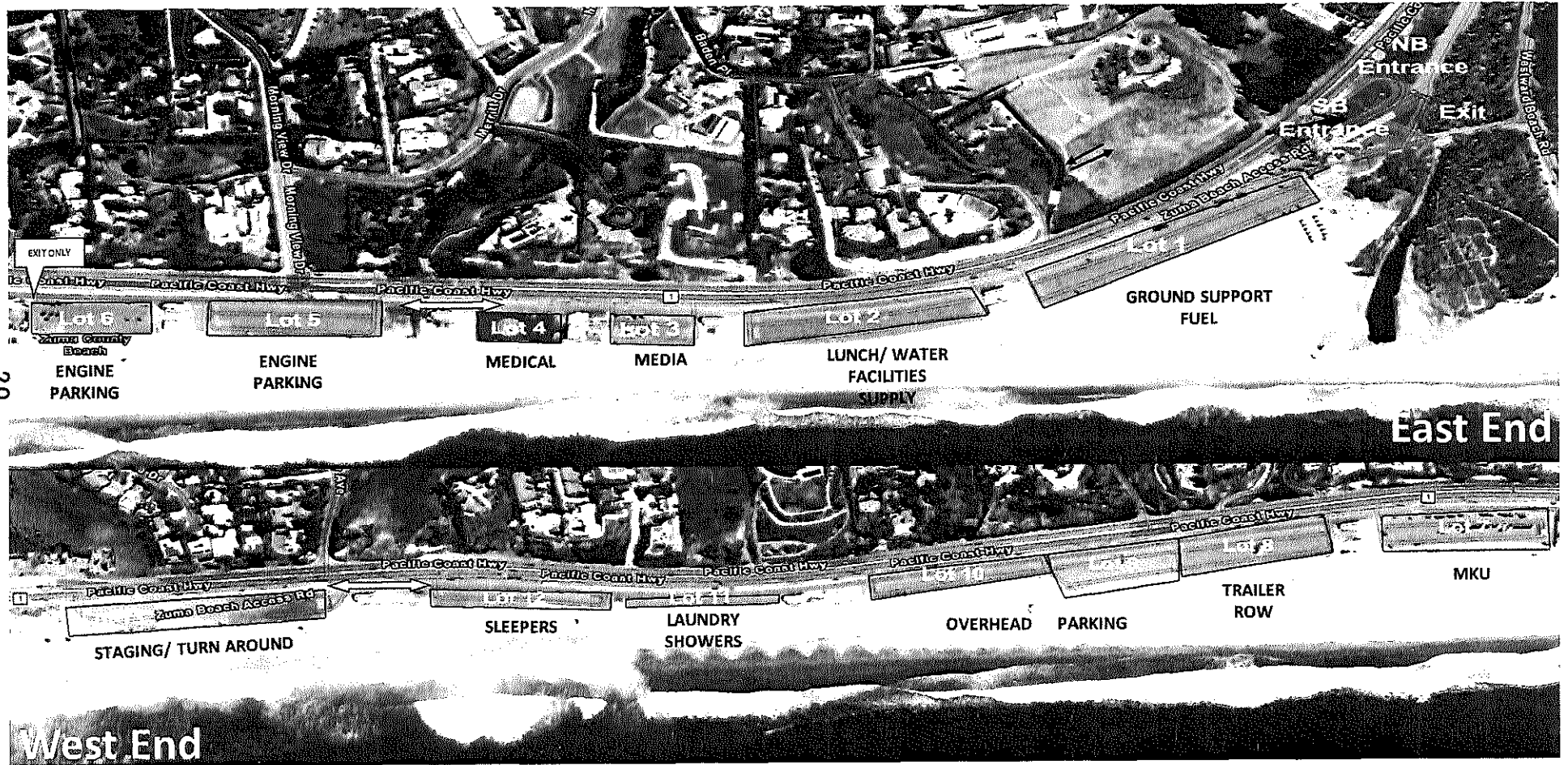
**Waterbreak/Waterbar/Cross Drain spacing**

Line or Road Gradient (%)	0-10%	11-25%	26-50%	>50%
Spacing	150'	100'	75'	50'

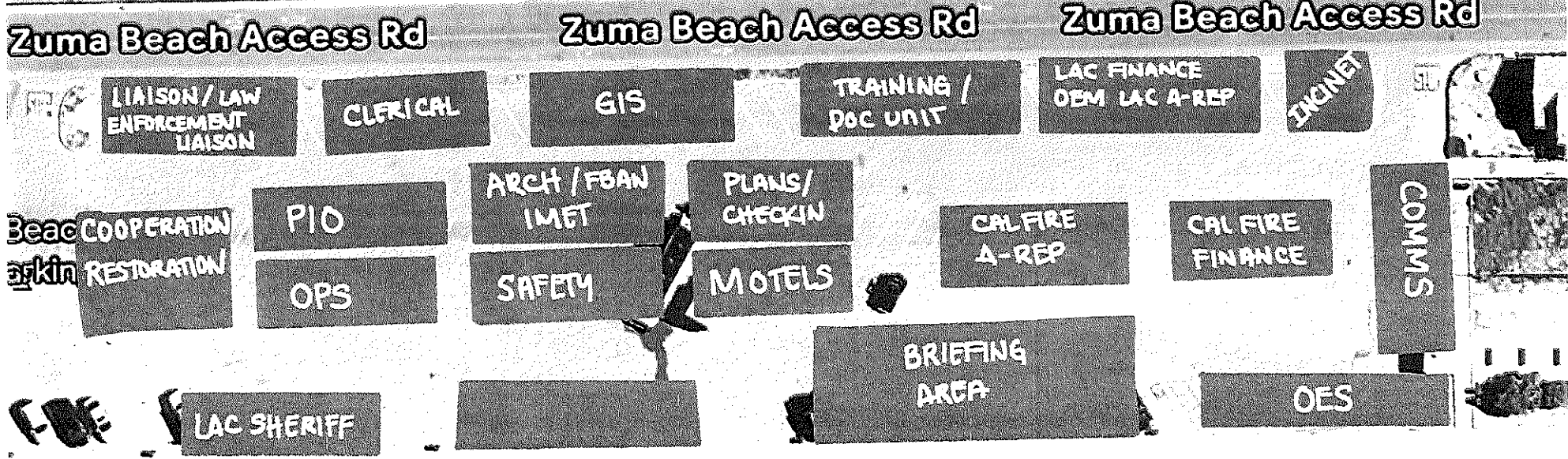
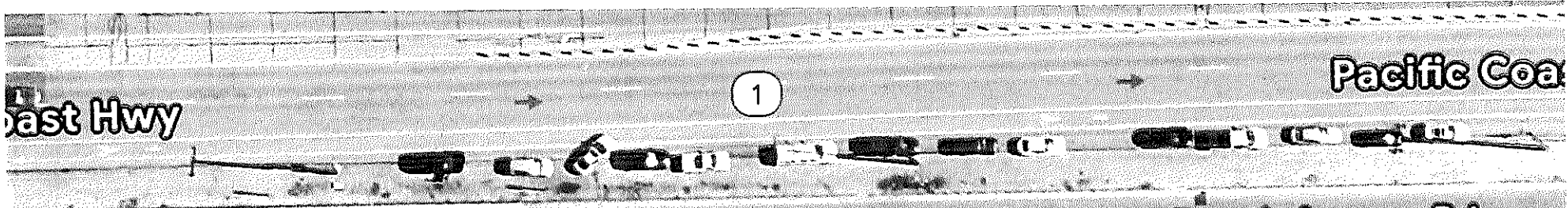
Waterbreaks, waterbars, or cross drains shall be cut diagonally with a minimum depth of 6" into existing grade and overall minimum height of 18". Outlets shall be open and directed into non-erodible material.

**Other Repair Concerns-** Broken, damaged fences, and/or gates damaged as the result of the fire control operations shall be repaired.

# Franklin Basecamp Map

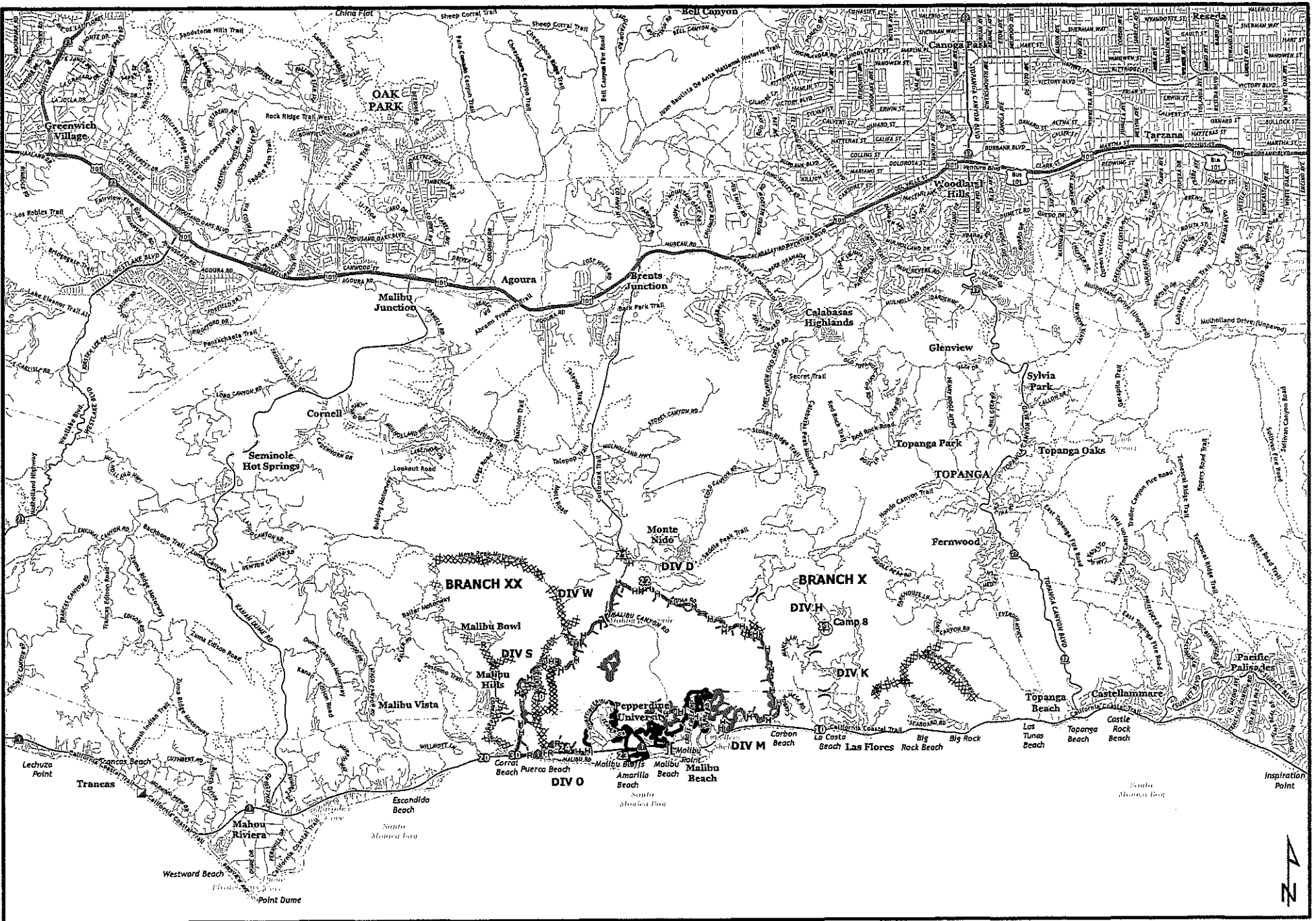


20



# FRANKLIN FIRE ICP

## TRAILER ROW MAP



- |                         |                          |                   |                                 |
|-------------------------|--------------------------|-------------------|---------------------------------|
| ⊃ Branch Break          | ⊃ Completed Dozer Line   | — Expressway      | — Tunnel                        |
| ⊃ Division Break        | ⊃ Completed Hand Line    | — Secondary Hwy   | — Trail                         |
| ⊃ Hellbase              | ⊃ Completed Road as Line | — Local Connector | — Wildfire Daily Fire Perimeter |
| ⊃ Incident Command Post | ⊃ Planned Dozer Line     | — Local Road      | — Ramp                          |
| ⊃ Drop Point            | ⊃ Contained              | — Ramp            | — 4WD                           |
|                         | ⊃ Uncontained            |                   |                                 |

**Transportation**  
**Franklin Incident**  
 CA-LAC-434928

Scale: 1:124,000  
 MAP DATE: 11/15/11





