

# **BRECKENRIDGE COMPLEX**

**Saturday**

**9-17-2011**

**Day Shift**

**CA-KRN-027969**

**1502 PNGFJ6**

|                            |   |                                     |                                 |
|----------------------------|---|-------------------------------------|---------------------------------|
| <b>Incident Objectives</b> | 1. Incident Name<br><b>BRECKENRIDGE</b> | 2. Date Prepared<br><b>09/16/11</b> | 3. Time Prepared<br><b>0906</b> |
|----------------------------|---|-------------------------------------|---------------------------------|

4. Operational Period  
**09/17/11 Saturday Day Shift 0600 - 1800**

5. General Control Objectives for the incident (include alternatives)

Keep fire East of Camanche Road  
 Keep fire South of the Kern River  
 Keep fire West of Caliente-Bodfish Road  
 Keep fire North of Walker Basin Creek

**MANAGEMENT OBJECTIVES:**

Provide for emergency personnel and public safety at all times  
 Protect natural and heritage resources  
 Keep costs commensurate with values at risk  
 Minimize loss to structures, private property and other improvements

6. Weather Forecast for Period

See attached

7. General Safety Message

See attached

8. Attachments (mark if attached)

|  |  |  |
|--|--|--|
| <input checked="" type="checkbox"/> Organization List - ICS 203      | <input checked="" type="checkbox"/> Incident Map   | <input checked="" type="checkbox"/> Training Message |
| <input checked="" type="checkbox"/> Div. Assignment Lists - ICS 204  | <input checked="" type="checkbox"/> Safety Message | <input checked="" type="checkbox"/> Base Camp Map    |
| <input checked="" type="checkbox"/> Communications Plan - ICS205     | <input type="checkbox"/> Traffic Plan              | <input checked="" type="checkbox"/> Phone List       |
| <input checked="" type="checkbox"/> Medical Plan - ICS 206           | <input checked="" type="checkbox"/> Weather        | <input checked="" type="checkbox"/> 214 Unit Log     |
| <input checked="" type="checkbox"/> Air Operations Summary - ICS 220 | <input checked="" type="checkbox"/> 215A           | <input type="checkbox"/>                             |

|  |  |
|--|--|
| 9. Prepared by (Planning Section Chief)<br><i>John Schmechel</i> | 10. Approved by (Incident Commander)<br><i>Drew McCall</i> |
|--|--|

| ORGANIZATION ASSIGNMENT LIST                                     |   |                          | 9 Operations Section   |                               |
|--|---|--------------------------|--|-------------------------------|
| 1. Incident Name<br><b>BRECKENRIDGE</b>                          |   |                          | Day Operations   | SMITH, JOHN                   |
| 2. Date Prepared<br>09/16/11                                     |   | 3. Time Prepared<br>0916 | Planning Operations  | KINGSBURY, MARK               |
| 4. Operational Period<br>09/17/11 Saturday Day Shift 0600 - 1800 |   |                          | <b>a Branch I - Division/Groups</b>  |                               |
| Position   |   | Name                     | Branch Director  |                               |
|  |   |                          | Deputy   |                               |
| <b>5 Incident Commander and Staff</b>                            |   |                          | Division/Group A/C/F/H   | DELLANINI, P; VILLA, E (T)    |
| Incident Commander   | COOPER, DAVID; ZOMBRO, KELLY; BROTHERS, VERNELL |                          | Division/Group K   | PANETTA, J; OKEEFE, D (T)     |
| Deputy   | MILLS, DERON                                    |                          | Division/Group M   | WATKINS, STEVE; FUNK, JERRY   |
| Safety Officer   | PULCHER, TOM                                    |                          | Division/Group Z   | JACKSON, C; STEINBRING, S (T) |
| Information Officer  | SINGH, ROYJINDAR                                |                          | Suppression Repair Group   |                               |
| Liaison Officer  |   |                          | <b>b Branch II - Division/Groups</b>   |                               |
| <b>6 Agency Representative</b>                                   |   |                          | Branch Director  |                               |
| Agency   | Name  |                          | Deputy   |                               |
| CAL EMA  | BONDSHU, BILL                                   |                          | Division/Group   |                               |
| USFS - SQF   | LARSON, RICK                                    |                          | Division/Group   |                               |
| USDI - BLM   | SMITH, TIM                                      |                          | Division/Group   |                               |
| KERN COUNTY FIRE   | MARSHALL, BRIAN                                 |                          | Division/Group   |                               |
|  |   |                          | Division/Group   |                               |
| <b>7 Planning Section</b>  |   |                          | <b>c Branch III - Division/Groups</b>  |                               |
| Chief  | SCHMECHEL, JOHN                                 |                          | Branch Director  |                               |
| Deputy   |   |                          | Deputy   |                               |
| Resources Unit   | ELLISON, RUTH                                   |                          | Division/Group   |                               |
| Situation Unit   | LEMON, MARK                                     |                          | Division/Group   |                               |
| Documentation Unit   | NOLEN, HAL                                      |                          | Division/Group   |                               |
| Demobilization Unit  | RYAN, CHRIS                                     |                          | Division/Group   |                               |
| Fire Behavior Analyst  | BOURSIER, DON M                                 |                          | Division/Group   |                               |
| Human Resource Specialist  |   |                          | <b>d Air Operations Branch</b>   |                               |
| Training Specialist  | NOLEN, HAL                                      |                          | Air Operations Branch Director   | REECE, ROBERT                 |
| GIS Specialist   |   |                          | Helibase Manager   |                               |
| Computer Specialist  | WATSON, RONALD; HENNEN, ALEX                    |                          | Air Attack Supervisor  |                               |
|  |   |                          | Air Support Supervisor   | DISNEY, JERRY                 |
|  |   |                          | Helicopter Coordinator   |                               |
|  |   |                          | Air Tanker Coordinator   |                               |
| <b>8 Logistics Section</b>                                       |   |                          | <b>10 Finance Section</b>  |                               |
| Chief  | STINNETT, JOSHUA                                |                          | Chief  | DISNEY, JOAN                  |
| Deputy   | DIRK, LARRY (T)                                 |                          | Deputy   | BROWNE, RICH                  |
| Supply Unit  | MCCARVER, RANDY                                 |                          | Time Unit  | LAWSON, JODI                  |
| Facilities Unit  | ORTIZ, TIMOTHY                                  |                          | Procurement Unit   |                               |
| Ground Support Unit  | SMITH, VERN; BAKER, DAVID                       |                          | Compensation/Claims Unit   |                               |
| Communications Unit  | MEHCIZ, JOSEPH                                  |                          | Cost Unit  | MASSEY, FAUZIA                |
| Medical Unit   | ALBERTSON, KEVIN                                |                          | Prepared by (Resource Unit Leader)   |                               |
| Security Unit  | YOUNG, TOM                                      |                          |  |                               |
| Food Unit  | SANCHEZ, JOSE                                   |                          |  |                               |



# Fire Weather Forecast



**FORECAST NO:** 8

**NAME OF FIRE:** Breckenridge

**PREDICTION FOR:** Day SHIFT

**UNIT:** CA-KRN

**SHIFT DATE:** Saturday, September 17, 2011

**SIGNED:** Jim Harrison *Jim Harrison*

**TIME AND DATE**

**Incident Meteorologist**

**FORECAST ISSUED:** 2100 hours September 16, 2011

**WEATHER DISCUSSION:** A dry northwest flow aloft and a stable air mass will be over the fire area today. There will be little change in temperature and humidity compared to Friday. A ridge of high pressure will start to build over California Sunday leading to warmer temperatures and lower relative humidity.

## **TODAY:**

**WEATHER:** Sunny.

**TEMPERATURES:** 72-82 degrees.

**MINIMUM HUMIDITY:** 20-30 percent.

### **20 FT WINDS:**

**Slopes/Drainages:** Light and variable early then upslope/upcanyon 4-8 mph.

**Ridges:** Northwest 5-10 mph.

**LAL:** 1.

**STABILITY/INVERSION:** Weak inversion in canyons early diminishing by 1100. Mixing height about 3000 AGL.

## **TONIGHT:**

**WEATHER:** Clear.

**TEMPERATURES:** 52-62 degrees.

**MAXIMUM HUMIDITY:** 48-58 percent.

### **20 FT WINDS:**

**Slopes/Drainages:** Upslope/upcanyon 4-8 mph early then downslope/downcanyon 2-5 mph.

**Ridges:** Northwest 4-8 mph in the evening then northeast 4-8 mph.

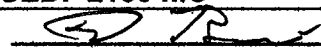
**LAL:** 1.

**STABILITY/INVERSION:** Moderate inversion developing in canyons after 2200.

## **Outlook for Sunday:**

The air mass will remain dry and stable with temperatures up several degrees and relative humidity down about 5 percent.

# FIRE BEHAVIOR FORECAST

|  |  |
|--|--|
| FORECAST NUMBER: 4                       | TYPE OF FIRE: Wildland   |
| FIRE NAME: Breckenridge Complex          | OPERATIONAL PERIOD: 9/17/11 24 hrs   |
| DATE ISSUED: 9/16/11                     | TIME ISSUED: 2100 hrs  |
| UNIT: CA-KRN                             | SIGNED:  |
| Typed/printed: Don Boursier, LTAN/FBAN-T |  |

## INPUTS

### WEATHER SUMMARY:

Dry N/W flow aloft and a stable air mass over the fire area today. High pressure system will start to build over the Southwest on Sunday with warmer and dryer conditions to follow.

Daytime: Max Temps 72-82, Min RH 20-30%, Winds N/W 5-10 mph, Gust to 15 mph along ridge tops with valley bottoms upslope/up canyon 4-8 mph, Gust to 10 mph.

Nighttime: Min Temps 52-62, Max RH 48-58% above 2500 feet and 55-65% in canyon bottoms, Winds N/W 4-8 mph becoming N/E and light down canyon winds in canyon bottoms.

## OUTPUTS

### FIRE BEHAVIOR

#### GENERAL:

Steep slopes present the opportunity for hot material to roll-out across containment lines. Numerous divisions have underslung line that will require a greater level of attentiveness.

Opportunity for flare ups in small unburned interior duff areas exist with < 1' Flame Lengths.

Probability of ignition: 79%

Moderate night time RH recovery is expected on upper slopes and excellent on lower slopes.

#### SPECIFIC:

Divisions A, C, and Z: No fire activity.

Divisions F, H and M: No significant fire activity.

Division K: Minimal smoldering in steep canyon areas. Interior hot spots with isolated heat. All activity within containment lines.

#### AIR OPERATIONS:

Good visibility; Mixing height 3000' agl. and transport winds N/W 5-10 mph.

## SAFETY

Keep alert to hot ash pots/stump holes.

|                                 |                  |                   |
|---------------------------------|------------------|-------------------|
| <b>Division Assignment List</b> | 1. Branch        | 2. Division/Group |
|                                 | <b>A/C/I/F/H</b> |                   |

|   |  |
|---|--|
| 3. Incident Name<br><b>BRECKENRIDGE</b> | 4. Operational Period<br>09/17/11 Saturday Day Shift 0600 - 1800 |
|---|--|

**5. Operations Personnel**

|                     |                 |                           |                             |
|---------------------|-----------------|---------------------------|-----------------------------|
| Operations Chief    | SMITH, JOHN     | Division/Group Supervisor | DELLANINI, P ; VILLA, E (T) |
| Planning Operations | KINGSBURY, MARK | Air Attack Supervisor     | REECE, ROBERT               |
| Branch Director     |                 | Safety Officer            | PULCHER, TOM                |

**6. Resources Assigned This Period**

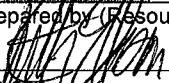
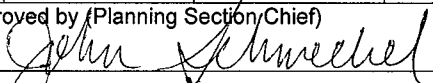
| Strike Team/Task Force/ Resource Designator | Leader        | Num of Pers. | Trans. Y/N | Drop Off PT./Time | Pick Up PT./Time |
|---|---------------|--------------|------------|-------------------|------------------|
| ENGINE S/T - T3 - 9230C                     | WRIGHT, RAY   | 17           | N          | DP 3 0700         | ICP 1900         |
| WT - T1 HAFENFELD FARMS E-43                | CHAFFIN, HUGH | 2            | N          | DP 3 0700         | ICP 1900         |
|   |               |              |            |                   |                  |
|   |               |              |            |                   |                  |
|   |               |              |            |                   |                  |
|   |               |              |            |                   |                  |
|   |               |              |            |                   |                  |
|   |               |              |            |                   |                  |
|   |               |              |            |                   |                  |
|   |               |              |            |                   |                  |
|   |               |              |            |                   |                  |
|   |               |              |            |                   |                  |
|   |               |              |            |                   |                  |
|   |               |              |            |                   |                  |
|   |               |              |            |                   |                  |
|   |               |              |            |                   |                  |
|   |               |              |            |                   |                  |
|   |               |              |            |                   |                  |
|   |               |              |            |                   |                  |
|   |               |              |            |                   |                  |
|   |               |              |            |                   |                  |

**7. Control Operations**  
 MOP-UP, PATROL  
 BACK HAUL TRASH AND EXCESS SUPPLIES

**8. Special Instructions**

**9. Division/Group Communications Summary**

| Function           | Frequency - RX | Frequency - TX | Tone      | System | Channel | System | Channel |
|--------------------|----------------|----------------|-----------|--------|---------|--------|---------|
| Command            | 170.6875       | 166.5750       | 4 (136.5) | VHF    | 3       |        |         |
| Tactical Div/Group | 154.3025       | 154.3025       |           | VHF    | 4       |        |         |
| Log Sites          |                |                |           |        |         |        |         |
| Air to Ground      | 172.6125       | 172.6125       |           | VHF    | 13      |        |         |

|  |  |               |               |
|--|--|---------------|---------------|
| Prepared by (Resource Unit Leader)   | Approved by (Planning Section Chief)   | Date Prepared | Time Prepared |
|  |  | 09/16/11      | 0939          |

|                                 |   |                               |
|---------------------------------|---|-------------------------------|
| <b>Division Assignment List</b> | 1. Branch                               | 2. Division/Group<br><b>K</b> |
|                                 | 3. Incident Name<br><b>BRECKENRIDGE</b> |                               |

|   |  |
|---|--|
| 4. Operational Period<br><b>09/17/11 Saturday Day Shift 0600 - 1800</b> |  |
|---|--|

| 5. Operations Personnel |                        |                           |                                       |
|-------------------------|------------------------|---------------------------|---------------------------------------|
| Operations Chief        | <b>JOHN SMITH</b>      | Division/Group Supervisor | <b>PANETTA, JEFF; OKEEFE, DAN (T)</b> |
| Planning Operations     | <b>KINGSBURY, MARK</b> | Air Attack Supervisor     | <b>REECE ROBERT</b>                   |
| Branch Director         |                        | Safety Officer            | <b>PULCHER, TOM</b>                   |

**6. Resources Assigned this Period**

| Strike Team/Task Force/ Resource Designator | Leader          | Num of Pers. | Trans. Y/N | Drop Off PT./Time | Pick Up PT./Time |
|---|-----------------|--------------|------------|-------------------|------------------|
| ENGINE S/T - T3 - 9351 C                    | LOGAN, RICHARD  | 21           | N          | DP 4 0700         | ICP 1900         |
| CREW S/T - T1 - 9254G                       | CRAIG, DAN      | 36           | N          | DP 4 0700         | ICP 1900         |
| CREW S/T - T1 - 9253G                       | JONSSON, MAGNUS | 33           | N          | DP 4 0700         | ICP 1900         |
| CREW S/T - T1 - 9373G                       | JORGENSEN, SUE  | 39           | N          | DP 4 0700         | ICP 1900         |
|   |                 |              |            |                   |                  |
|   |                 |              |            |                   |                  |
|   |                 |              |            |                   |                  |
|   |                 |              |            |                   |                  |
|   |                 |              |            |                   |                  |
|   |                 |              |            |                   |                  |
|   |                 |              |            |                   |                  |
|   |                 |              |            |                   |                  |
|   |                 |              |            |                   |                  |
|   |                 |              |            |                   |                  |
|   |                 |              |            |                   |                  |
|   |                 |              |            |                   |                  |
|   |                 |              |            |                   |                  |
|   |                 |              |            |                   |                  |
|   |                 |              |            |                   |                  |

7. Control Operations

IMPROVE EXISTING LINE  
 HOLD LINE AND MOP-UP  
 BACK HAUL ALL TRASH AND EXCESS SUPPLIES

8. Special Instructions

**9. Division/Group Communications Summary**

| Function           | Frequency - RX | Frequency - TX | Tone      | System | Channel | System | Channel |
|--------------------|----------------|----------------|-----------|--------|---------|--------|---------|
| Command            | 166.6125       | 168.4000       | 4 (136.5) | VHF    | 2       |        |         |
| Tactical DIV/Group | 166.5500       | 166.5500       |           | VHF    | 5       |        |         |
| Logistics          |                |                |           |        |         |        |         |
| Air to Ground      | 172.6125       | 172.6125       |           | VHF    | 13      |        |         |

|  |  |                                  |                              |
|--|--|----------------------------------|------------------------------|
| Prepared by (Resource Unit Leader)<br><i>[Signature]</i> | Approved by (Planning Section Chief)<br><i>[Signature]</i> | Date Prepared<br><b>09/16/11</b> | Time Prepared<br><b>1709</b> |
|--|--|----------------------------------|------------------------------|

|                                 |           |                               |
|---------------------------------|-----------|-------------------------------|
| <b>Division Assignment List</b> | 1. Branch | 2. Division/Group<br><b>M</b> |
|---------------------------------|-----------|-------------------------------|

|   |  |
|---|--|
| 3. Incident Name<br><b>BRECKENRIDGE</b> | 4. Operational Period<br>09/17/11 Saturday Day Shift 0600 - 1800 |
|---|--|

| 5. Operations Personnel |                        |                           |  |
|-------------------------|------------------------|---------------------------|--|
| Operations Chief        | <b>SMITH, JOHN</b>     | Division/Group Supervisor | <b>WATKINS, STEVE; FUNK, JERRY (T)</b> |
| Planning Operations     | <b>KINGSBURY, MARK</b> | Air Attack Supervisor     | <b>REECE, ROBERT</b>                   |
| Branch Director         |                        | Safety Officer            | <b>PULCHER, TOM</b>                    |

| 6. Resources Assigned this Period           |                    |              |            |                   |                  |
|---|--------------------|--------------|------------|-------------------|------------------|
| Strike Team/Task Force/ Resource Designator | Leader             | Num of Pers. | Trans. Y/N | Drop Off PT./Time | Pick Up PT./Time |
| ENGINE S/T - T3 - 9312C                     | RODRIGUEZ, JORGE H | 16           | N          | DP 4 0700         | ICP 1900         |
| CREW S/T - T1 - 9376G                       | CLAYS, JOHN        | 31           | N          | DP 4 0700         | ICP 1900         |
| WT - T1 - PETERSON FARMS E-7                | PETERSON, DUSTIN   | 2            | N          | DP 4 0700         | ICP 1900         |
| SOFR  | BERGSTRAND, MATT   | 1            | N          | DP 4 0700         | ICP 1900         |
|   |                    |              |            |                   |                  |
|   |                    |              |            |                   |                  |
|   |                    |              |            |                   |                  |
|   |                    |              |            |                   |                  |
|   |                    |              |            |                   |                  |
|   |                    |              |            |                   |                  |
|   |                    |              |            |                   |                  |
|   |                    |              |            |                   |                  |
|   |                    |              |            |                   |                  |
|   |                    |              |            |                   |                  |
|   |                    |              |            |                   |                  |
|   |                    |              |            |                   |                  |
|   |                    |              |            |                   |                  |
|   |                    |              |            |                   |                  |
|   |                    |              |            |                   |                  |
|   |                    |              |            |                   |                  |
|   |                    |              |            |                   |                  |
|   |                    |              |            |                   |                  |

7. Control Operations

HOLD LINE AND MOP-UP  
BACK HAUL ALL TRASH AND EXCESS SUPPLIES

8. Special Instructions

| 9. Division/Group Communications Summary |                |                |           |        |         |        |         |
|--|----------------|----------------|-----------|--------|---------|--------|---------|
| Function                                 | Frequency - RX | Frequency - TX | Tone      | System | Channel | System | Channel |
| Command                                  | 166.6125       | 168.4000       | 4 (136.5) | VHF    | 2       |        |         |
| Tactical Div/Group                       | 168.2375       | 168.2375       |           | VHF    | 7       |        |         |
| Logistics                                |                |                |           |        |         |        |         |
| Air to Ground                            | 172.6125       | 172.6125       |           | VHF    | 13      |        |         |

|  |  |                           |                       |
|--|--|---------------------------|-----------------------|
| Prepared by (Resource Unit Leader)<br><i>[Signature]</i> | Approved by (Planning Section Chief)<br><i>[Signature]</i> | Date Prepared<br>09/16/11 | Time Prepared<br>1721 |
|--|--|---------------------------|-----------------------|



|                                 |           |                               |
|---------------------------------|-----------|-------------------------------|
| <b>Division Assignment List</b> | 1. Branch | 2. Division/Group<br><b>Z</b> |
|---------------------------------|-----------|-------------------------------|

|   |   |
|---|---|
| 3. Incident Name<br><b>BRECKENRIDGE</b> | 4. Operational Period<br><b>09/17/11 Saturday Day Shift 0600 - 1800</b> |
|---|---|

**5. Operations Personnel**

|                     |                        |                           |  |
|---------------------|------------------------|---------------------------|--|
| Operations Chief    | <b>SMITH, JOHN</b>     | Division/Group Supervisor | <b>JACKSON, CURTIS; STEINBRING, SCOT (T)</b> |
| Planning Operations | <b>KINGSBURY, MARK</b> | Air Attack Supervisor     | <b>REECE, ROBERT</b>                         |
| Branch Director     |                        | Safety Officer            | <b>PULCHER, TOM</b>                          |

**6. Resources Assigned This Period**

| Strike Team/Task Force/ Resource Designator | Leader        | Num of Pers. | Trans. Y/N | Drop Off PT./Time | Pick Up PT./Time |
|---|---------------|--------------|------------|-------------------|------------------|
| ENGINE S/T - T3 - 9333C                     | SCALES, RANDY | 17           | N          | DP 4 0700         | ICP 1900         |
| R.I.C. CONTSTRUCTION E-19                   | VANDENRAADT,  | 2            | N          | DP 4 0700         | ICP 1900         |
|   |               |              |            |                   |                  |
|   |               |              |            |                   |                  |
|   |               |              |            |                   |                  |
|   |               |              |            |                   |                  |
|   |               |              |            |                   |                  |
|   |               |              |            |                   |                  |
|   |               |              |            |                   |                  |
|   |               |              |            |                   |                  |
|   |               |              |            |                   |                  |
|   |               |              |            |                   |                  |
|   |               |              |            |                   |                  |
|   |               |              |            |                   |                  |
|   |               |              |            |                   |                  |
|   |               |              |            |                   |                  |
|   |               |              |            |                   |                  |
|   |               |              |            |                   |                  |
|   |               |              |            |                   |                  |

**7. Control Operations**

PATROL AND MOP-UP  
BACK HAUL ALL TRASH AND EXCESS SUPPLIES

**8. Special Instructions**

**9. Division/Group Communications Summary**

| Function           | Frequency - RX | Frequency - TX | Tone      | System | Channel | System | Channel |
|--------------------|----------------|----------------|-----------|--------|---------|--------|---------|
| Command            | 166.6125       | 168.4000       | 4 (136.5) | VHF    | 2       |        |         |
| Tactical Div/Group | 154.6500       | 154.6500       |           | VHF    | 8       |        |         |
| Logistics          |                |                |           |        |         |        |         |
| Air/C Ground       | 172.6125       | 172.6125       |           | VHF    | 13      |        |         |

|  |   |                                  |                              |
|--|---|----------------------------------|------------------------------|
| Prepared by (Resource Unit Leader)<br><i>[Signature]</i> | Approved by (Planning Section Chief)<br><i>John Schmechel</i> | Date Prepared<br><b>09/16/11</b> | Time Prepared<br><b>1728</b> |
|--|---|----------------------------------|------------------------------|

|                                 |           |  |
|---------------------------------|-----------|--|
| <b>Division Assignment List</b> | 1. Branch | 2. Division/Group<br><b>REPAIR GROUP</b> |
|---------------------------------|-----------|--|

|   |   |
|---|---|
| 3. Incident Name<br><b>BRECKENRIDGE</b> | 4. Operational Period<br><b>09/17/11 Saturday Day Shift 0600 - 1800</b> |
|---|---|

| 5. Operations Personnel |                        |                           |                      |
|-------------------------|------------------------|---------------------------|----------------------|
| Operations Chief        | <b>SMITH, JOHN</b>     | Division/Group Supervisor |                      |
| Planning Operations     | <b>KINGSBURY, MARK</b> | Air Attack Supervisor     | <b>REECE, ROBERT</b> |
| Branch Director         |                        | Safety Officer            | <b>PULCHER, TOM</b>  |

| 6. Resources Assigned this Period           |                |              |            |                   |                  |
|---|----------------|--------------|------------|-------------------|------------------|
| Strike Team/Task Force/ Resource Designator | Leader         | Num of Pers. | Trans. Y/N | Drop Off PT./Time | Pick Up PT./Time |
| DOZER S/T - T2 - 9145L                      | BALDWIN, JOE   | 6            | N          | 0700              | 1900             |
| DOZER S/T - T2 - 5240L                      |                |              |            |                   |                  |
| REHAB SPECIALIST                            | BRENT, HEATHER | 1            | N          | 0700              | 1900             |
|   |                |              |            |                   |                  |
|   |                |              |            |                   |                  |
|   |                |              |            |                   |                  |
|   |                |              |            |                   |                  |
|   |                |              |            |                   |                  |
|   |                |              |            |                   |                  |
|   |                |              |            |                   |                  |
|   |                |              |            |                   |                  |
|   |                |              |            |                   |                  |
|   |                |              |            |                   |                  |
|   |                |              |            |                   |                  |
|   |                |              |            |                   |                  |
|   |                |              |            |                   |                  |
|   |                |              |            |                   |                  |
|   |                |              |            |                   |                  |
|   |                |              |            |                   |                  |

7. Control Operations

REPAIR DOZERLINES  
BACK HAUL ALL TRASH

8. Special Instructions

| 9. Division/Group Communications Summary |                |                |           |        |         |        |         |
|--|----------------|----------------|-----------|--------|---------|--------|---------|
| Function                                 | Frequency - RX | Frequency - TX | Tone      | System | Channel | System | Channel |
| Command                                  | 166.6125       | 168.4000       | 4 (136.5) | VHF    | 2       |        |         |
| Operational Div/Group                    | 154.2650       | 154.2650       |           | VHF    | 9       |        |         |
| Logistics                                |                |                |           |        |         |        |         |
| Air to Ground                            | 172.6125       | 172.6125       |           | VHF    | 13      |        |         |

|  |  |                           |                       |
|--|--|---------------------------|-----------------------|
| Prepared by (Resource Unit Leader)<br> | Approved by (Planning Section Chief)<br> | Date Prepared<br>09/16/11 | Time Prepared<br>1734 |
|--|--|---------------------------|-----------------------|

**Incident Radio Communications Plan**

1. Incident Name  
**BRECKENRIDGE**

2. Operational Period  
09/17/11 Saturday Day Shift 0600 - 1800

**3 Basic Radio Channel Utilization**

| Radio Type | Channel | Function      | Frequency/Tone |             | Assignment                   | Remarks                        |
|------------|---------|---------------|----------------|-------------|------------------------------|--------------------------------|
| VHF        | 1       | Command 1     | RX 155.8800    | TX 158.9400 | Backup Command (ECC)         | KRN 2                          |
|            |         |               | Tone 3 (131.8) |             |                              |                                |
| VHF        | 2       | Command 2     | RX 166.6125    | TX 168.4000 | DIV K,M,Z,REPAIR             | NIFC C-4<br>Breckenridge Mt.   |
|            |         |               | Tone 4 (136.5) |             |                              |                                |
| VHF        | 3       | Command 3     | RX 170.6875    | TX 166.5750 | DIV <u>A</u> /C/F/H          | NIFC C-11<br>Wood Rd.          |
|            |         |               | Tone 4 (136.5) |             |                              |                                |
| VHF        | 4       | TAC 4         | RX 154.3025    | TX 154.3025 | DIV <u>A</u> /C/F/H          | V FIRE 26                      |
|            |         |               |                |             |                              |                                |
| VHF        | 5       | TAC 5         | RX 166.5500    | TX 166.5500 | DIV K                        | R5 T4                          |
|            |         |               |                |             |                              |                                |
| VHF        | 6       | TAC 6         | RX 167.1125    | TX 167.1125 | AVAILABLE                    | R5 T5                          |
|            |         |               |                |             |                              |                                |
| VHF        | 7       | TAC 7         | RX 168.2375    | TX 168.2375 | DIV M                        | R5 T6                          |
|            |         |               |                |             |                              |                                |
| VHF        | 8       | TAC 8         | RX 154.6500    | TX 154.6500 | DIV Z                        | KRN TAC 15C                    |
|            |         |               |                |             |                              |                                |
| VHF        | 9       | TAC 9         | RX 154.2650    | TX 154.2650 | REPAIR GROUP                 | V FIRE 22                      |
|            |         |               |                |             |                              |                                |
| VHF        | 13      | AIR TO GROUND | RX 172.6125    | TX 172.6125 | OPERATIONAL<br>AIR TO GROUND |                                |
|            |         |               |                |             |                              |                                |
| VHF        | 14      | AIR GUARD     | RX 168.6250    | TX 168.6250 | EMERGENCY USE<br>ONLY        | TONE ON TRANSMIT ONLY<br>110.9 |
|            |         |               | Tone 1 (110.9) |             |                              |                                |
| VHF        | 16      | AIR GUARD     | RX 168.6250    | TX 168.6250 | EMERGENCY USE<br>ONLY        | TONE ON TRANSMIT ONLY<br>110.9 |
|            |         |               | Tone 1 (110.9) |             |                              |                                |
|            |         |               |                |             |                              |                                |
|            |         |               |                |             |                              |                                |
|            |         |               |                |             |                              |                                |
|            |         |               |                |             |                              |                                |

4. Prepared by (Communications Unit)

Joe Mehciz COML



5. Date Prepared

09/16/11

6. Time Prepared

1750

|                                       |   |                                      |                                 |   |
|---------------------------------------|---|--------------------------------------|---------------------------------|---|
| <b>MEDICAL PLAN</b><br><b>206 ICS</b> | 1. INCIDENT NAME<br><b>Breckenridge Complex</b> | 2. DATE PREPARED<br><b>9/16/2011</b> | 3. TIME PREPARED<br><b>1930</b> | 4. OPERATIONAL PERIOD<br><b>9/17/2011 Day</b><br><b>0600-1800</b> |
|---------------------------------------|---|--------------------------------------|---------------------------------|---|

**5. INCIDENT MEDICAL AID STATIONS**

| MEDICAL AID STATIONS | LOCATION                         | PARAMEDICS |    |
|----------------------|----------------------------------|------------|----|
|                      |                                  | YES        | NO |
| ICP                  | Hart Park (Breckenridge Complex) |            | X  |

**6. TRANSPORTATION**

**A. GROUND AMBULANCE SERVICES**

| NAME            | LOCATION                                  | PHONE        | PARAMEDICS |    |
|-----------------|---|--------------|------------|----|
|                 |   |              | YES        | NO |
| Halls Ambulance | Bakersfield, request through incident ECC | 661 392-8536 | X          |    |

**B. AIR AMBULANCES**

| NAME  | LOCATION                    | PARAMEDICS |    |
|---|-----------------------------|------------|----|
|   |                             | YES        | NO |
| Mercy Air   | Mojave, (661) 868-4068      | X          |    |
| Hall Air Ambulance (Primary Airship)              | Bakersfield, (661) 868-4068 | X          |    |
| Kern County Fire 408 (Hoist & Night Ops. Capable) | Bakersfield, (661) 868-4068 |            | X  |
| Kern Sheriff Air 5 (Hoist and Night Ops. Capable) | Bakersfield, (661) 868-4068 |            | X  |

**7. HOSPITALS**

| NAME  | ADDRESS  | TRAVEL TIME |      | PHONE        | HELIPAD |    | BURN CENTER |    |
|---|--|-------------|------|--------------|---------|----|-------------|----|
|   |  | AIR         | GRND |              | YES     | NO | YES         | NO |
| Tehachapi Hospital (Basic)                        | 115 West E St. Tehachapi   | :10         | :50  | 661-823-3070 | X       |    |             | X  |
| Kern Medical Center (Trauma Center)               | Bakersfield<br>N35.23.03 W118.58.09<br>1700 Mount Vernon Ave Bakersfield | 15          | 30   | 661-326-2667 | X       |    |             | X  |
| San Joaquin Community Hospital (Burn and Cardiac) | 2615 Chester Ave Bakersfield<br>N35.23.01 W119.01.08                     | 18          | 40   | 661-869-6200 | X       |    | X           |    |

**8. MEDICAL EMERGENCY PROCEDURES**

**FIRE LINE OR SPIKE CAMP EMERGENCY**  
 Crew Boss to contact Division Supervisor with patient complaint/condition and location.  
 Division Supervisor contacts:

- (Consider requesting ECC to close channel for emergency traffic)
  - Operations with Patient injury/illness info.
  - Request medical supplies/evacuation equipment
  - Give DP or LZ information for Patient transport.
- Operations or Division:
  - Oversees Med EVAC operations
  - Makes all necessary notifications & transport Decisions per Med Unit input.
  - Contact Breckenridge Comm. to request ground or air ambulance if needed.
  - The Division can communicate with the airship on Air to Ground.
  - Notify Safety Officer and IC
- Medical Unit:
  - Notify receiving hospital of injury status.

**BASE CAMP EMERGENCY**  
 Contact Medical Unit with patient complaint/condition and location.

**INJURY REPORTING PROCEDURES**  
**(DO NOT USE PATIENT NAME OVER THE AIR)**

NATURE OF INJURY \_\_\_\_\_  
 LOCATION OF PATIENT \_\_\_\_\_  
 IS EMT WITH THE PATIENT: YES \_\_\_ NO \_\_\_  
 TRANSPORT REQUEST BY: AIR \_\_\_ GROUND \_\_\_  
 POINT OF PICKUP \_\_\_\_\_  
 LAT \_\_\_\_\_ LONG \_\_\_\_\_  
 PATIENT UNIT ID \_\_\_\_\_  
 PATIENT WT \_\_\_\_\_ lbs. (For Air Evac)  
 AGE \_\_\_\_\_  
 SEX: MALE \_\_\_ FEMALE \_\_\_  
**Vitals and other information:**  
 \_\_\_\_\_  
 \_\_\_\_\_  
 \_\_\_\_\_

**ALL EMERGENCIES---Secure the area and identify witnesses for later investigation. Keep an accurate log of events.**

|                |  |                                   |
|----------------|--|-----------------------------------|
| <b>206 ICS</b> | 9. PREPARED BY: (Kevin Albertson MEDL-T) | 10. REVIEWED BY: (Safety Officer) |
|----------------|--|-----------------------------------|

# AIR OPERATIONS SUMMARY

OPERATIONAL PERIOD DATE: 09-17-2011

START: 06:00

END: 20:30

1. INCIDENT NAME: Breckenridge Complex

2. PREPARED BY: Robert Reece

PREPARED DATE/TIME: 09-16-2011 20:00

3. Sunrise: 06:37 Sunset: 19:06

4. REMARKS (Safety Notes, Hazards, Air Operations Special Equipment, etc.):

Medivac Helo: H-408 (Rescue/Hoist) 24HRS Primary.  
Medivac Helo: H-K AIR 5 (rescue/hoist) local sheriff

Do not over fly structures with external load missions.  
All aircraft should have strobes and running lights on in smoky conditions.  
Hazards: Snags, non-incident aircraft, and winds.

Be aware of hot temperatures and high altitudes.  
Watch for military aircraft operating in the area.

5. TFR: 9451  
Radius: 7 NM  
Altitude: 8,000 MSL  
Centerpoint: Lat: 35 24.20  
Long: 118 43.39

Give clear, concise direction when requesting missions... need a location and a contact.

| 6. PERSONNEL                    | Phone        | 7. REQUENCIES | AM           | FM           | 8. FIXED-WING | # Avail / Type/ Make-Model / FAA # / Base(s) |
|---------------------------------|--------------|---------------|--------------|--------------|---------------|--|
| AOBD: Robert Reece              | 559-760-2186 | AIR/AIR FW:   |              | 170.4625     | Airtankers    | By Request                                   |
| ASGS:                           |              | AIR/AIR RW:   | 126.9250     |              | Lead planes   | By Request                                   |
| ATGS: Ken Craw                  | 559-358-7108 | AIR/GROUND:   |              | 172.6125     | ATGS Aircraft | By request                                   |
| HLCO:                           |              | AIR/Guard     | 168.6250N    | RX/TX        | AA410 primar  |  |
| HEBM:                           |              | COMMAND       | Rx: 166.6125 | Tx: 168.4000 | Other         |  |
| ATBM:                           |              | RPT           | Tone 4       |              |               |  |
| HEB Keene Helibase              | 661-822-6978 | DECK:         |              | 163.100      |               |  |
| HEBM1 Lisa Cardoza (Mdw, Field) | 760-685-0429 | TOLC:         |              |              |               |  |

## 9. HELICOPTERS (Use Additional Sheets As Necessary)

| FAA # of Designator | TY | MAKE/MODEL | BASE           | START | REMARKS            | FAA # of Designator | TY | MAKE/MODEL | BASE | START | REMARKS |
|---------------------|----|------------|----------------|-------|--------------------|---------------------|----|------------|------|-------|---------|
| H-408               | 11 | Bell 205++ | Keene Helibase | 24HRS | Medical/ Hoist/ IA |                     |    |            |      |       |         |
| H-554               | 11 | Bell 205++ | Meadow Field   | 08:00 | Passenger/Bucket   |                     |    |            |      |       |         |
|                     |    |            |                |       |                    |                     |    |            |      |       |         |
|                     |    |            |                |       |                    |                     |    |            |      |       |         |
|                     |    |            |                |       |                    |                     |    |            |      |       |         |
|                     |    |            |                |       |                    |                     |    |            |      |       |         |

## 10. TASK/MISSION/ASSIGNMENT (Use ICS-220a if additional space needed; Type/function includes: Air Tactical, Retardant, Recon, Personnel Transport, Water Dropping, etc.)

| TYPE/FUNCTION | NAME OF PERSONNEL OR CARGO (if applicable) OR INSTRUCTIONS FOR TACTICAL AIRCRAFT            | MISSION START | FLY FROM   | FLY TO |
|---------------|---|---------------|------------|--------|
| Troop shuttle | As assigned   | 08:00         |            |        |
| Water Drops   | Priority.   | 08:00         |            |        |
| Recon         | As requested  | 08:00         |            |        |
| Cargo         | Fly supplies from Keene Helibase to Divisions as requested. Lat. 35 13.575 Long. 118 34.047 | TBA           | Keene Helb |        |
| Sling Site    | Backhaul water and supplies from Divisions back to Keene Helibase                           | TBA           |            |        |

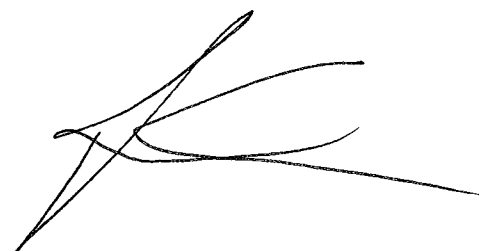
*Robert Reece AOBD*

# Safety Message

Incident: **Breckenridge Complex** Date: 9/17/2011

Management Objective #1: Provide for firefighter safety

- Fatigue affects judgment, decision-making and performance.
- Often insidious, it affects ability to self-diagnose.
- Simple evaluation of duration of assignment or work rest ratios are inadequate indicators of potential fatigue related errors and accidents.
- **We cannot afford NOT to take time to consider whether we are creating the momentum of our efforts, or being swept along by them.**
- Look at this effort as an investment, as time to reflect on those things that have life and death implications.
- You engage in it with the purpose of ensuring fatigue issues will not be the cause of the next accident.
- De-Mob don't drop your (SA).
- **ALWAYS SITUATIONAL AWARENESS !!!**

A handwritten signature in black ink, consisting of several overlapping, sweeping lines that form a stylized, abstract shape.

## INCIDENT RISK ANALYSIS (ICS 215a)

| DIV   | HAZARDOUS ACTIONS / CONDITIONS | MITIGATIONS / WARNINGS / REMEDIES   |  |
|---|--------------------------------|---|--|
| ALL   | <b>FIRE BEHAVIOR</b>           | <ul style="list-style-type: none"> <li>Closely monitor weather conditions. Communicate weather changes to ICP.</li> <li>Maintain adequate escape routes and safety zones. Advise all personnel if these are compromised or changed. Set trigger points when appropriate.</li> <li>Adhere to 10 Std Orders, mitigate 18 situations. Maintain Situational Awareness.</li> </ul>   |  |
| ALL   | <b>COMMUNICATION</b>           | <ul style="list-style-type: none"> <li>Use of human repeaters to link all fire lines and ICP as necessary.</li> <li>Be sure to confirm freqs and tones work for you.</li> <li>Be aware of possible frequency conflicts with other fires</li> </ul>  |  |
| A   | <b>STEEP TERRAIN</b>           | <ul style="list-style-type: none"> <li>ROLLING MATERIAL</li> <li>150%+ slopes in some areas</li> </ul>  |  |
| ALL   | <b>HYDRATION</b>               | <ul style="list-style-type: none"> <li>Drinking water before, during and after shifts, minimum 1.5 gal. per shift.</li> <li>Be alert for signs of heat stress in yourself and others.</li> <li>Be sure and eat throughout day to better assimilate energy/hydration needs.</li> </ul> <p style="text-align: center;"><b>MONSTER, ROCK STAR AND RED BULL ARE NOT HYDRATORS !!!!!!!</b></p>   |  |
| ALL   | <b>AIRCRAFT</b>                | <ul style="list-style-type: none"> <li>Use dedicated and identified air to ground contacts.</li> <li>Multiple aircraft and types.</li> </ul>  |  |
| A/F/M   | <b>ROADS</b>                   | REFER TO IRPG pg 24   |  |
| ALL   | <b>DRIVING HAZARDS</b>         | <ul style="list-style-type: none"> <li>Reduce speed. Be watchful of local vehicles</li> <li>Drive defensively! Expect the unexpected around every curve.</li> <li>Drive with headlights on; use chock blocks, keep windshields clean; look before backing; and use backers whenever available.</li> <li>Hwy 178 will be a major risk for all of us</li> <li>Maintain Driving Situational Awareness.</li> </ul> <p style="text-align: center;"><b>PLEASE KEEP THE SPEED DOWN</b></p> |  |
| INCIDENT NAME:<br><b>BRECKENRIDGE COMPLEX</b><br><br>ICS 215a |                                | DATE PREPARED:<br><p style="text-align: center;"><b>9/16/11</b></p> <hr/> TIME PREPARED: <b>1130 HOURS</b>  | OPERATIONAL PERIOD<br><b>Day Shift 9/17/11</b><br><b>0600/1800</b><br>Prepared by<br><b>Tom Pulcher</b><br><b>SOF2</b> |

# ***TRAINING SPECIALIST MESSAGE***

## **BRECKENRIDGE COMPLEX**

**All Canyon Incident Trainees and Trainers  
Unless you are otherwise notified, all open  
training assignments on the  
BRECKENRIDGE COMPLEX must be “closed  
out” with the TNSP by 2000 Hrs on  
SATURDAY 9-17-2011**

**In order to receive documented credit for your training  
assignment – you must close out with the Training  
Specialist before you Demob!!**

**BEAT THE RUSH!**

**If as much work as possible has been completed in the  
position task book, Trainees may close their assignment  
with the TNSP prior to the demob process  
Bring the following to the “exit interview”**

- **A completed and signed ICS 225 or 226**
- **Performance Evaluation**

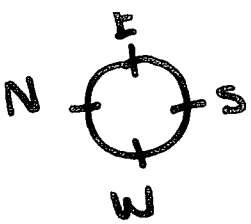
***Forms are available at the Training Office***

***Remember: No documentation – it didn't happen!***

***Hal Nolen - TNSP***

**09-17-11**

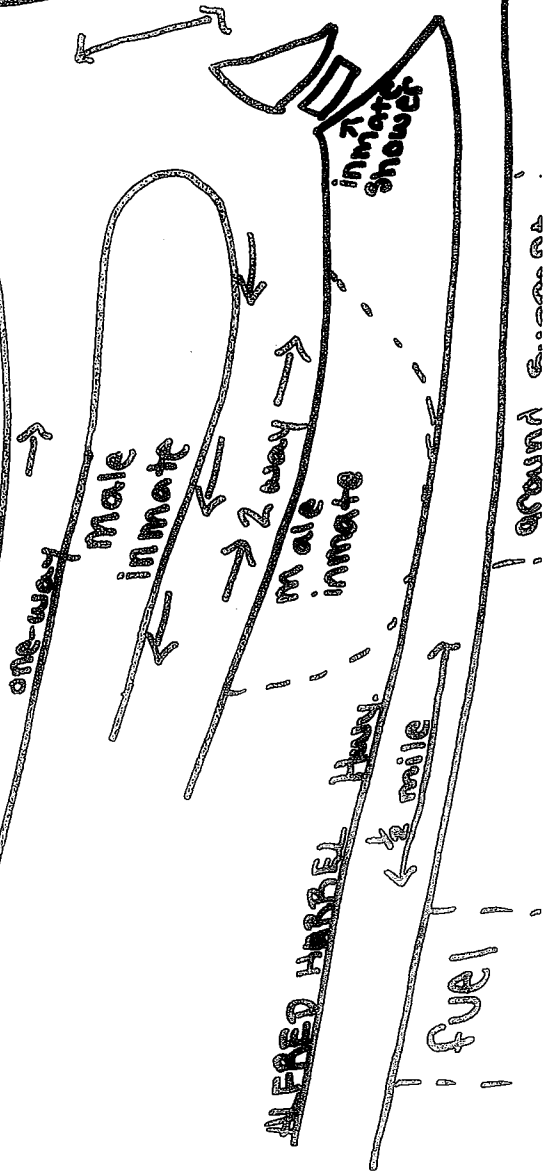
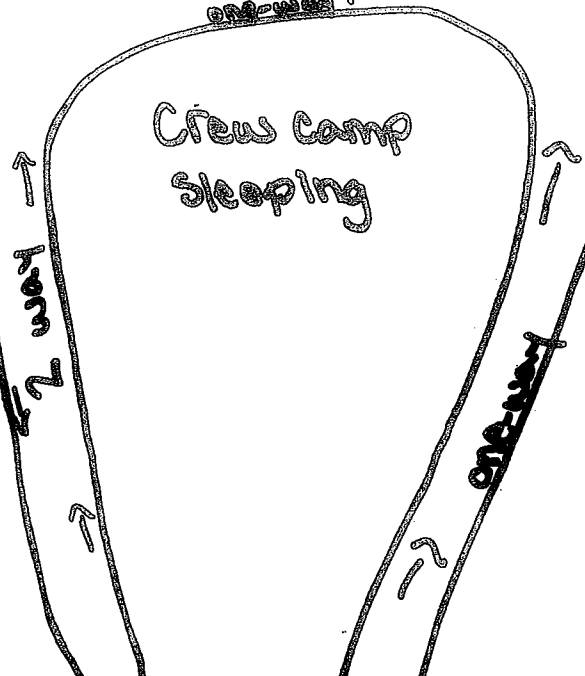
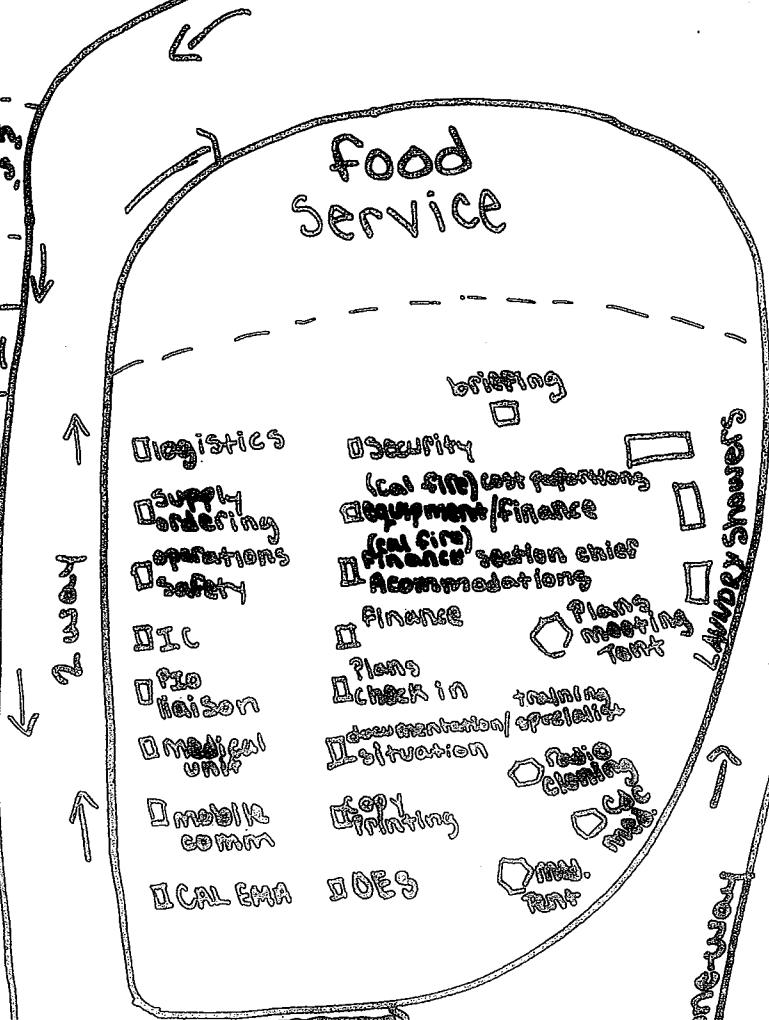




ALFRED HARBOR

female inmate

lunch  
drinks  
ice  
supply  
Ver  
lead  
sleeping



inmate shower

ALFRED HARBOR HARV.

fuel

around camp



# OPERATIONAL AREA SATELLITE INFORMATION SYSTEM (OASIS)

## Dialing Instructions

### To Make Calls Using OASIS:

- 1) From an OASIS phone to another OASIS phone:  
Dial the 5 digit OASIS number
  
- 2) From an OASIS phone to a Public Switched Telephone Network (PSTN)  
(Commercial) Phone:  
Sacramento: Dial 8-0201 → {WVP\*} → Dial "1+ area code + 7 digit number"\*\*\*
  
- 3) From a PSTN phone to an OASIS phone:  
Dial: 1-916-366-5977 → {WVP\*} → Dial the 5 digit OASIS number

\*NOTE: WVP = Wait for Voice Prompt - "extension" means dial the number you want.

\*\* NOTE: When dialing a number within the "916" Area Code, No need to dial "1" or "Area Code".

## For Problems With OASIS:

### INCIDENT COMMUNICATIONS

-OR-

Cal EMA Communications Unit

OASIS Phone:.....7-6624

- OR -

Cal EMA A.C. Telecommunications

OASIS Phone:.....7-6623

LOGISTICS UHF RADIO NET.....{CALEMA 5195}

- OR -

### California State Warning Center (CSWC)

OASIS Phone 24-Hour Contact# .....8-0401 or 8-0402

PSTN Phone 24-Hour Contact# .....(916) 845-8911

{Request Cal EMA Telecomm Duty Officer Assistance}

# BRECKENRIDGE COMPLEX ICP PHONE LIST

|                           |        |   |
|---------------------------|--------|---|
| IC                        | 7-6601 |   |
| OPS                       | 7-6602 |   |
| SAFETY                    | 7-6603 |   |
| PLANS                     | 7-6604 |   |
| PLANS FAX                 | 7-6614 |   |
| FINANCE {CALFIRE}         | 7-6605 | * |
| FINANCE FAX{CALFIRE}      | 7-6615 |   |
| ORDERING/SUPPLY           | 7-6606 |   |
| ORDERING/SUPPLY           | 7-6607 |   |
| ORDERING/SUPPLY           | 7-6608 |   |
| ORDERING/SUPPLY FAX       | 7-6616 |   |
| CALFIRE                   | 7-6609 | × |
| TRAINING                  | 7-6610 |   |
| SIT/STAT                  | 7-6611 |   |
| LOGISTICS                 | 7-6612 |   |
| CALEMA FIRE LIAISON       | 7-6622 |   |
| CALEMA OASIS TECH SUPPORT | 7-6624 |   |

# BRICKENRIDGE COMPLEX

updated 8/14

verizon cell

OFFICE

**OASIS DIAL FIRST**  
1-916-366-5977

| Incident Commander & Staff        |                  |              | OASIS DIAL FIRST<br>1-916-366-5977 |
|-----------------------------------|------------------|--------------|------------------------------------|
| Incident Commander                |                  | 951-225-4503 | 7 6601                             |
| Deputy Incident Commander         |                  | 951-225-4515 | 7 6601                             |
| Safety                            |                  |              | 7 6603                             |
| Safety Officer - Day              |                  |              | 7 6603                             |
| Safety Officer - Night            |                  |              | 7 6603                             |
| Security                          |                  |              |                                    |
| Liason Officer                    |                  | 951-225-4504 | 7 6622                             |
| Information Officer               |                  | 951-225-4505 |                                    |
| Operations                        |                  |              |                                    |
| Op Section Chief                  |                  | 951-225-4517 | 7 6603                             |
| Deputy                            |                  |              | 7 6603                             |
| Air Opps                          |                  | 951-225-4517 |                                    |
| Planning                          |                  |              |                                    |
| Plans Section Chief               |                  | 951-225-4508 | 7 6604                             |
| Plans Section Chief fax#          |                  |              | 7 6614                             |
| Resources Unit                    |                  |              |                                    |
| Situation Unit                    |                  |              | 7 6611                             |
| Documentation Unit                |                  |              |                                    |
| Check-In                          | fax 951-977-4502 | 951-225-4514 |                                    |
| DeMob Unit                        |                  |              |                                    |
| FBAN                              |                  |              |                                    |
| IMET                              |                  |              |                                    |
| Training                          |                  |              | 7 6610                             |
| Technical Specialist              |                  |              |                                    |
| Human Resource Specialist         |                  |              |                                    |
| Logistics                         |                  |              |                                    |
| Logs Section Chief                |                  |              | 7 6612                             |
| Logs                              |                  | 951-225-4516 | 7 6612                             |
| Supply Unit                       |                  | 951-225-4502 | Fax 951-977-4501                   |
| RCDM                              |                  |              |                                    |
| Ordering                          |                  | 951-225-4502 | 7 6606, 7 6607,                    |
| Ordering- FAX                     |                  | 951-977-4501 | 7 6616                             |
| Facilities Unit                   |                  |              |                                    |
| Ground Support Unit               | 916-203-4153     |              |                                    |
| Grnd Support - Clerical           | 925-519-6329     |              |                                    |
| Communications Unit Leader        | 916-519-9006     | 951-225-4501 |                                    |
| Medical Unit                      |                  | 951-225-4506 |                                    |
| Food Unit                         |                  |              |                                    |
| Kitchen                           |                  |              |                                    |
| Finance                           |                  |              |                                    |
| Cal Fire Finance                  |                  |              | 7 6605                             |
| Finance Section Chief             | fax 951-977-4503 | 951-225-4509 | 7 6615                             |
| Procurement                       |                  |              |                                    |
| Finance Cost/Chief/Accom Cal Fire |                  |              | 7 6609                             |
| Comp Claims                       |                  |              |                                    |
| Purchasing                        |                  |              |                                    |
| Finance Cost App Cal Fire         |                  |              | 7 6608                             |
| Cost Unit                         |                  |              |                                    |
| Cal Fire & Equip Time             |                  |              |                                    |
| Other Important Numbers           |                  |              |                                    |
| SQF Dispatch                      |                  |              |                                    |
| CDC REP                           |                  |              |                                    |
| Kern County S/O                   |                  |              |                                    |
| Expanded Dispatch                 |                  |              |                                    |
| CHP                               |                  |              |                                    |
| Souh Opps                         |                  |              |                                    |
| Cal Ema Fire & Rescue Rep         |                  |              | 7 6622                             |
| Copy Trailer                      |                  |              |                                    |
| CALEMA OASIS TECH SUPPORT         |                  |              | 7 6624                             |

B  
R  
E  
C  
K  
E  
N  
R  
I  
D  
G  
E  
  
C  
O  
M  
P  
L  
E  
X  
  
P  
H  
O  
N  
E

| UNIT LOG                           |  | 1. Incident Name                   | 2. Date Prepared | 3. Time Prepared      |
|------------------------------------|--|------------------------------------|------------------|-----------------------|
| 4. Unit Name/Designators           |  | 5. Unit Leader (Name and Position) |                  | 6. Operational Period |
| 7. Personnel Roster Assigned       |  |                                    |                  |                       |
| Name                               |  | ICS Position                       |                  | Home Base             |
|                                    |  |                                    |                  |                       |
|                                    |  |                                    |                  |                       |
|                                    |  |                                    |                  |                       |
|                                    |  |                                    |                  |                       |
|                                    |  |                                    |                  |                       |
|                                    |  |                                    |                  |                       |
|                                    |  |                                    |                  |                       |
|                                    |  |                                    |                  |                       |
|                                    |  |                                    |                  |                       |
|                                    |  |                                    |                  |                       |
|                                    |  |                                    |                  |                       |
|                                    |  |                                    |                  |                       |
|                                    |  |                                    |                  |                       |
|                                    |  |                                    |                  |                       |
|                                    |  |                                    |                  |                       |
| 8. Activity Log                    |  |                                    |                  |                       |
| Time                               |  | Major Events                       |                  |                       |
|                                    |  |                                    |                  |                       |
|                                    |  |                                    |                  |                       |
|                                    |  |                                    |                  |                       |
|                                    |  |                                    |                  |                       |
|                                    |  |                                    |                  |                       |
|                                    |  |                                    |                  |                       |
|                                    |  |                                    |                  |                       |
|                                    |  |                                    |                  |                       |
|                                    |  |                                    |                  |                       |
|                                    |  |                                    |                  |                       |
|                                    |  |                                    |                  |                       |
|                                    |  |                                    |                  |                       |
|                                    |  |                                    |                  |                       |
|                                    |  |                                    |                  |                       |
|                                    |  |                                    |                  |                       |
|                                    |  |                                    |                  |                       |
|                                    |  |                                    |                  |                       |
|                                    |  |                                    |                  |                       |
|                                    |  |                                    |                  |                       |
|                                    |  |                                    |                  |                       |
| 9. Prepared by (Name and Position) |  |                                    |                  |                       |