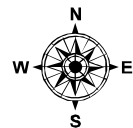




IAP Index Map

Tassajara Incident
CA-BEU-004217
September 21, 2015
0700-0700
NAD 83

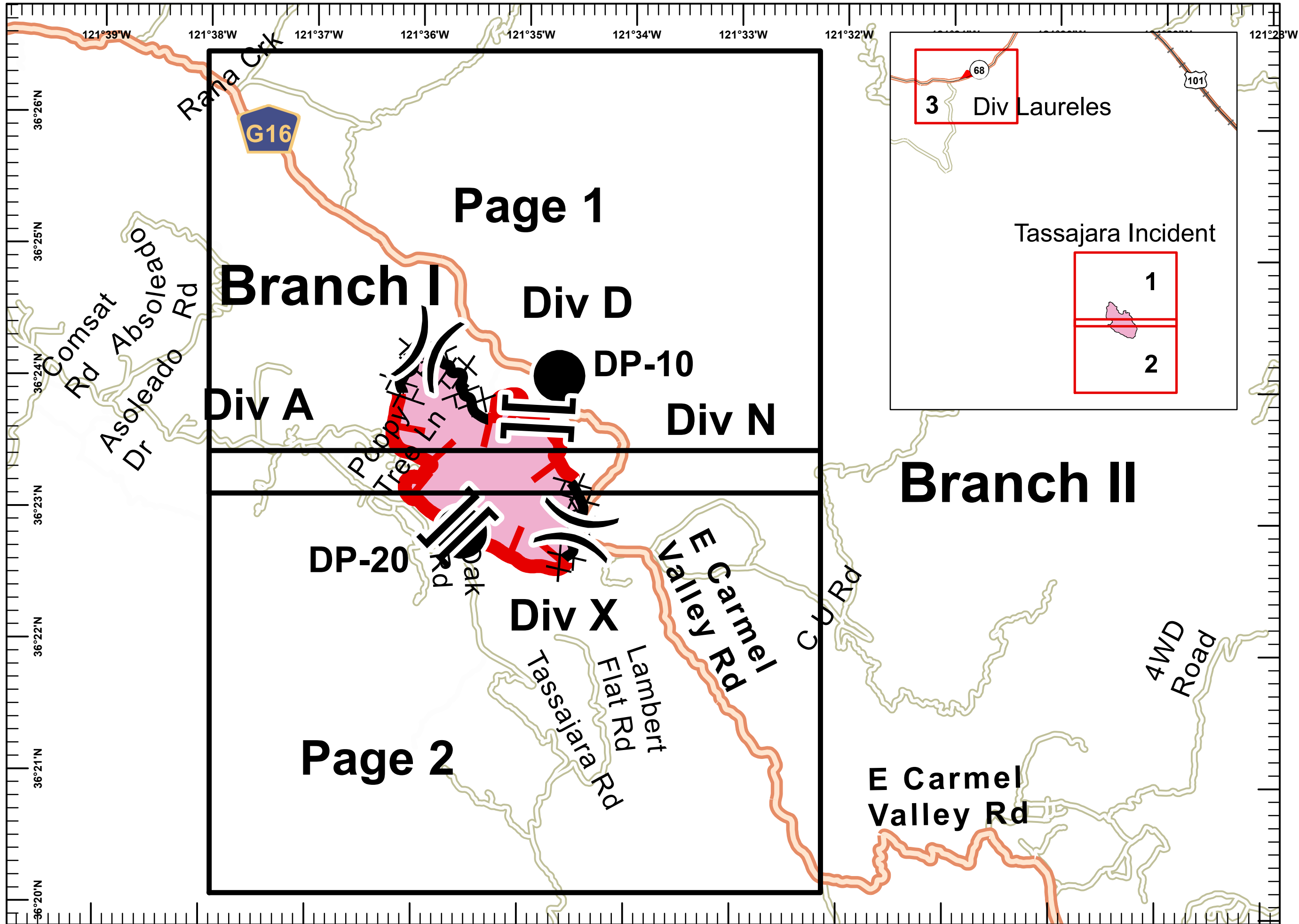
- Division
- Branch
- Drop Point
- Completed Line
- Uncontrolled Fire Edge
- Completed Dozer Line
- DPA Boundary



Miles
0 0.125 0.25 0.5

1:50,000

Poster IMT2 GIS
September 21, 2015
0300





IAP MAP

Tassajara Incident

CA-BEU-004217

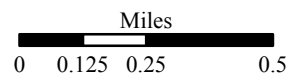
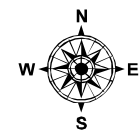
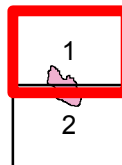
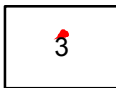
September 21, 2015

0700-0700

NAD 83

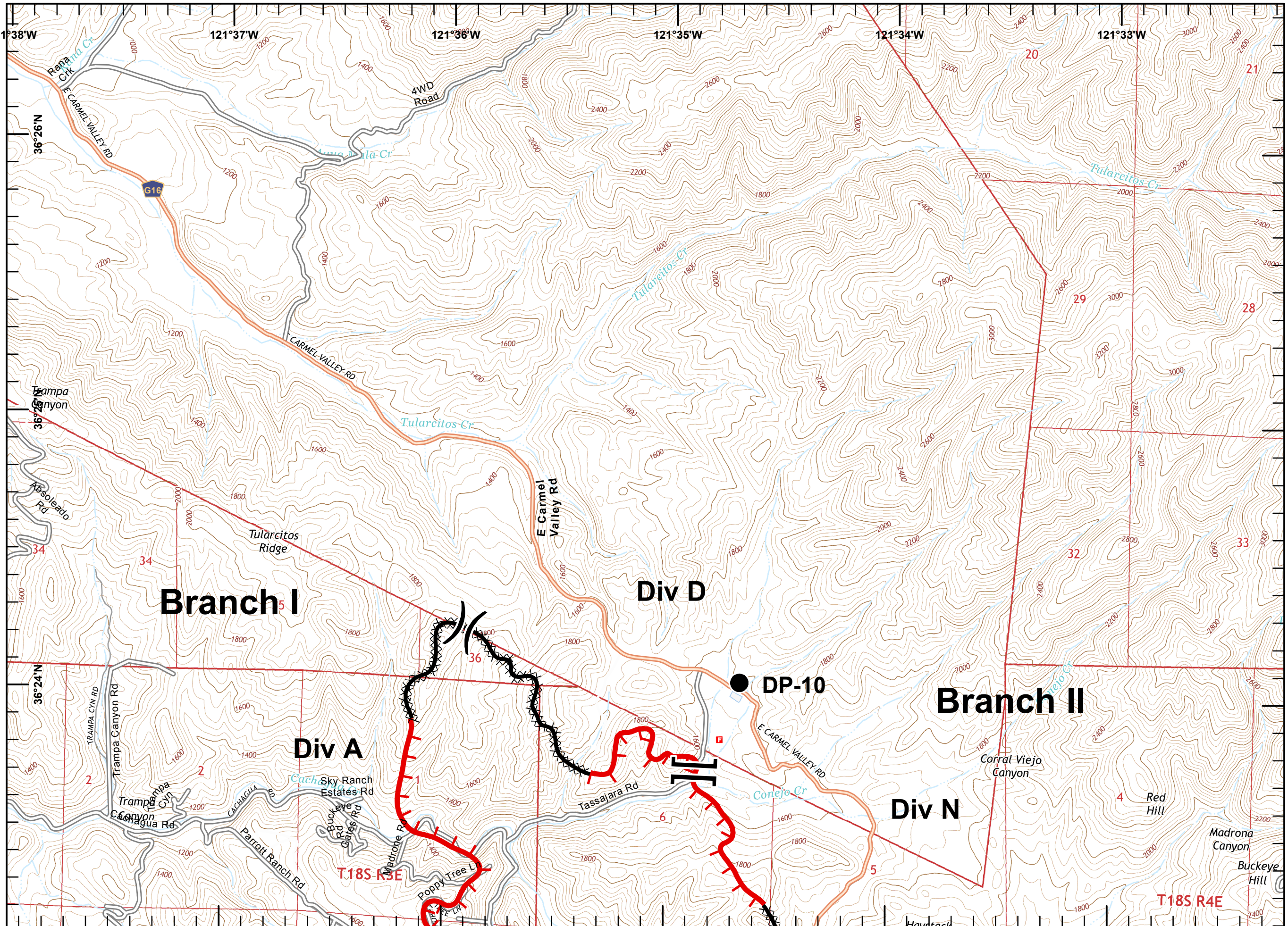
Page 1 of 3

- Division
- Branch
- Drop Point
- Completed Line
- Uncontrolled Fire Edge
- Completed Dozer Line
- DPA Boundary



1:24,000

Poster IMT2 GIS
September 21, 2015
0313





IAP MAP

Tassajara Incident

CA-BEU-004217

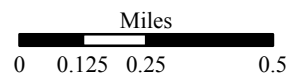
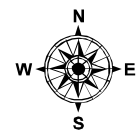
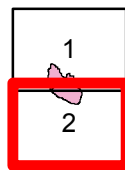
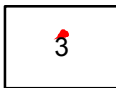
September 21, 2015

0700-0700

NAD 83

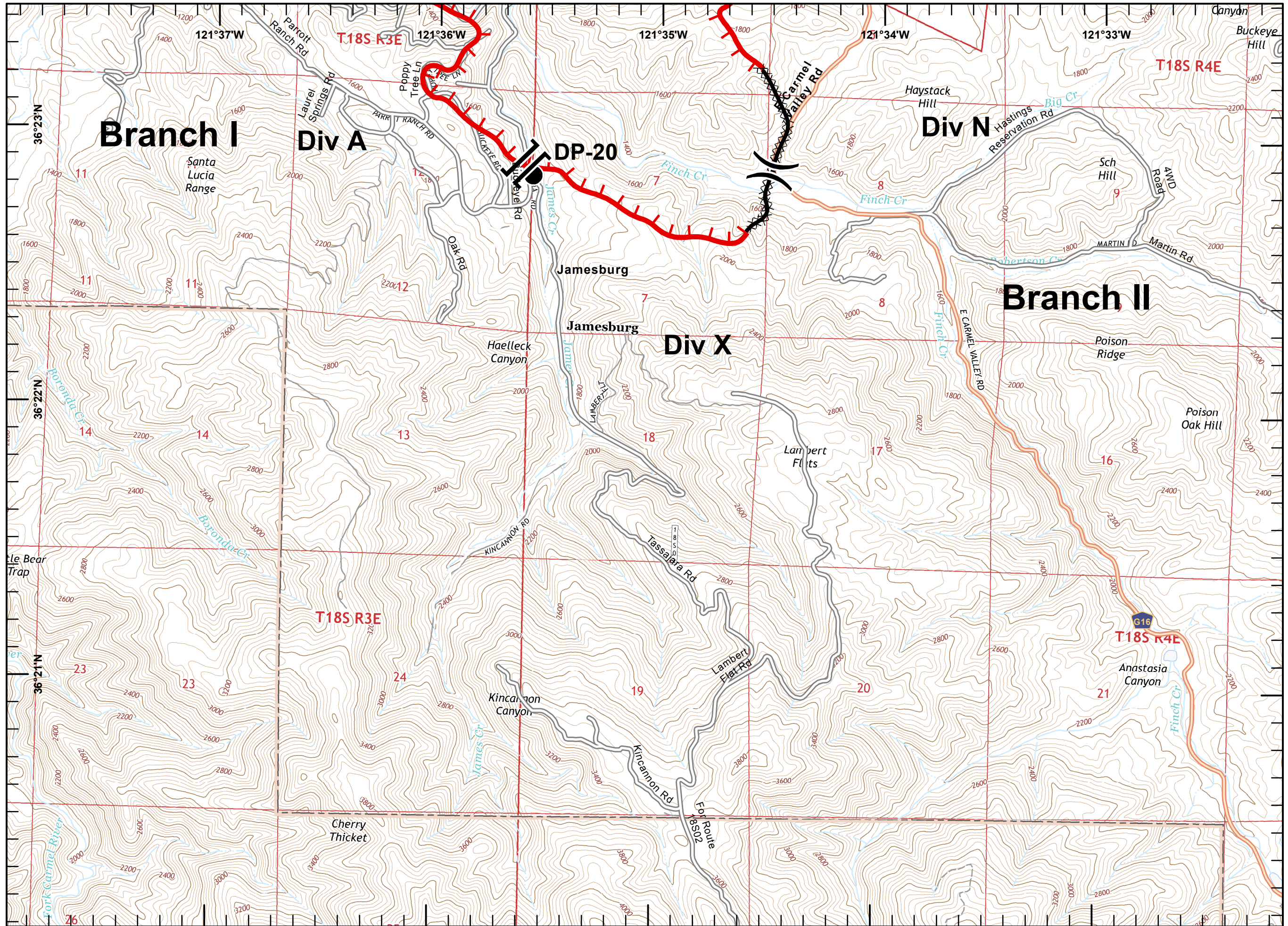
Page 2 of 3

- Division
- Branch
- Drop Point
- Completed Line
- Uncontrolled Fire Edge
- Completed Dozer Line
- DPA Boundary



1:24,000

Poster IMT2 GIS
September 21, 2015
0313



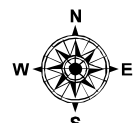
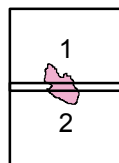


IAP MAP

Tassajara Incident
 CA-BEU-004217
 September 21, 2015
 0700-0700
 NAD 83
 Page 3 of 3

- Division
- Branch
- Drop Point
- Completed Line
- Uncontrolled Fire Edge
- Completed Dozer Line
- DPA Boundary

3



Miles
 0 0.125 0.25 0.5

1:24,000

Poster IMT2 GIS
 September 21, 2015
 0313

