



# OPS/IR MAP

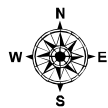
## Tassajara Incident

CA-BEU-004217  
 September 22, 2015  
 0700-0700  
 NAD 83

- Division
- Branch
- Drop Point
- Water Source
- Completed Line
- Uncontrolled Fire Edge
- Completed Dozer Line
- DPA Boundary

IR Flight  
 20150921 2234 hrs

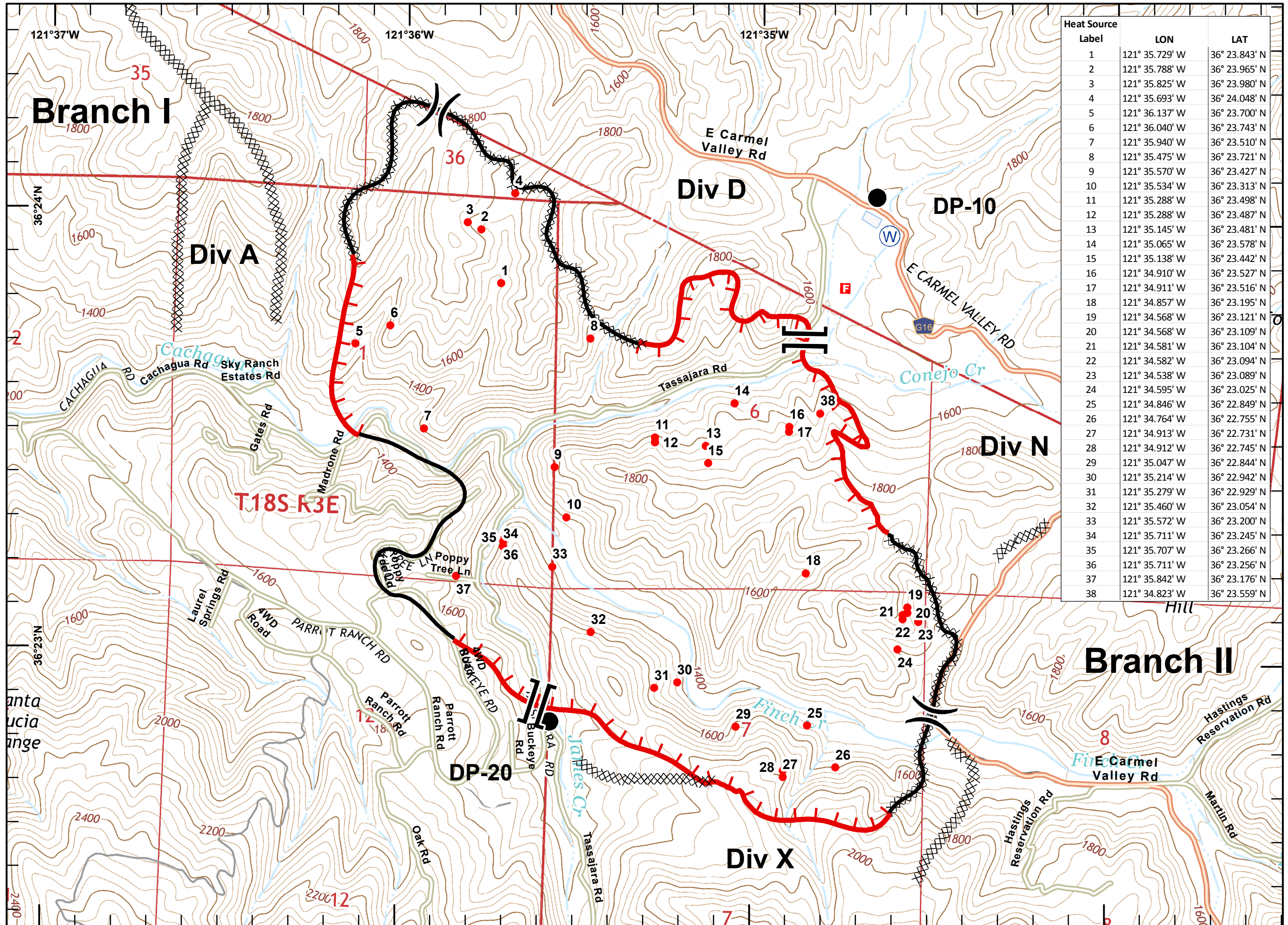
- Isolated Heat Sources



Miles  
 0 0.1 0.2 0.4

1:15,000

Poster IMT2 GIS  
 September 22, 2015  
 0022



Heat Source		
Label	LON	LAT
1	121° 35.729' W	36° 23.843' N
2	121° 35.788' W	36° 23.965' N
3	121° 35.825' W	36° 23.980' N
4	121° 35.693' W	36° 24.048' N
5	121° 36.137' W	36° 23.700' N
6	121° 36.040' W	36° 23.743' N
7	121° 35.940' W	36° 23.510' N
8	121° 35.475' W	36° 23.721' N
9	121° 35.570' W	36° 23.427' N
10	121° 35.534' W	36° 23.313' N
11	121° 35.288' W	36° 23.498' N
12	121° 35.288' W	36° 23.487' N
13	121° 35.145' W	36° 23.481' N
14	121° 35.065' W	36° 23.578' N
15	121° 35.138' W	36° 23.442' N
16	121° 34.910' W	36° 23.527' N
17	121° 34.911' W	36° 23.516' N
18	121° 34.857' W	36° 23.195' N
19	121° 34.568' W	36° 23.121' N
20	121° 34.568' W	36° 23.109' N
21	121° 34.581' W	36° 23.104' N
22	121° 34.582' W	36° 23.094' N
23	121° 34.538' W	36° 23.089' N
24	121° 34.595' W	36° 23.025' N
25	121° 34.846' W	36° 22.849' N
26	121° 34.764' W	36° 22.755' N
27	121° 34.913' W	36° 22.731' N
28	121° 34.912' W	36° 22.745' N
29	121° 35.047' W	36° 22.844' N
30	121° 35.214' W	36° 22.942' N
31	121° 35.279' W	36° 22.929' N
32	121° 35.460' W	36° 23.054' N
33	121° 35.572' W	36° 23.200' N
34	121° 35.711' W	36° 23.245' N
35	121° 35.707' W	36° 23.266' N
36	121° 35.711' W	36° 23.256' N
37	121° 35.842' W	36° 23.176' N
38	121° 34.823' W	36° 23.559' N