



# IR MAP CUESTA INCIDENT CA-SLU-008555

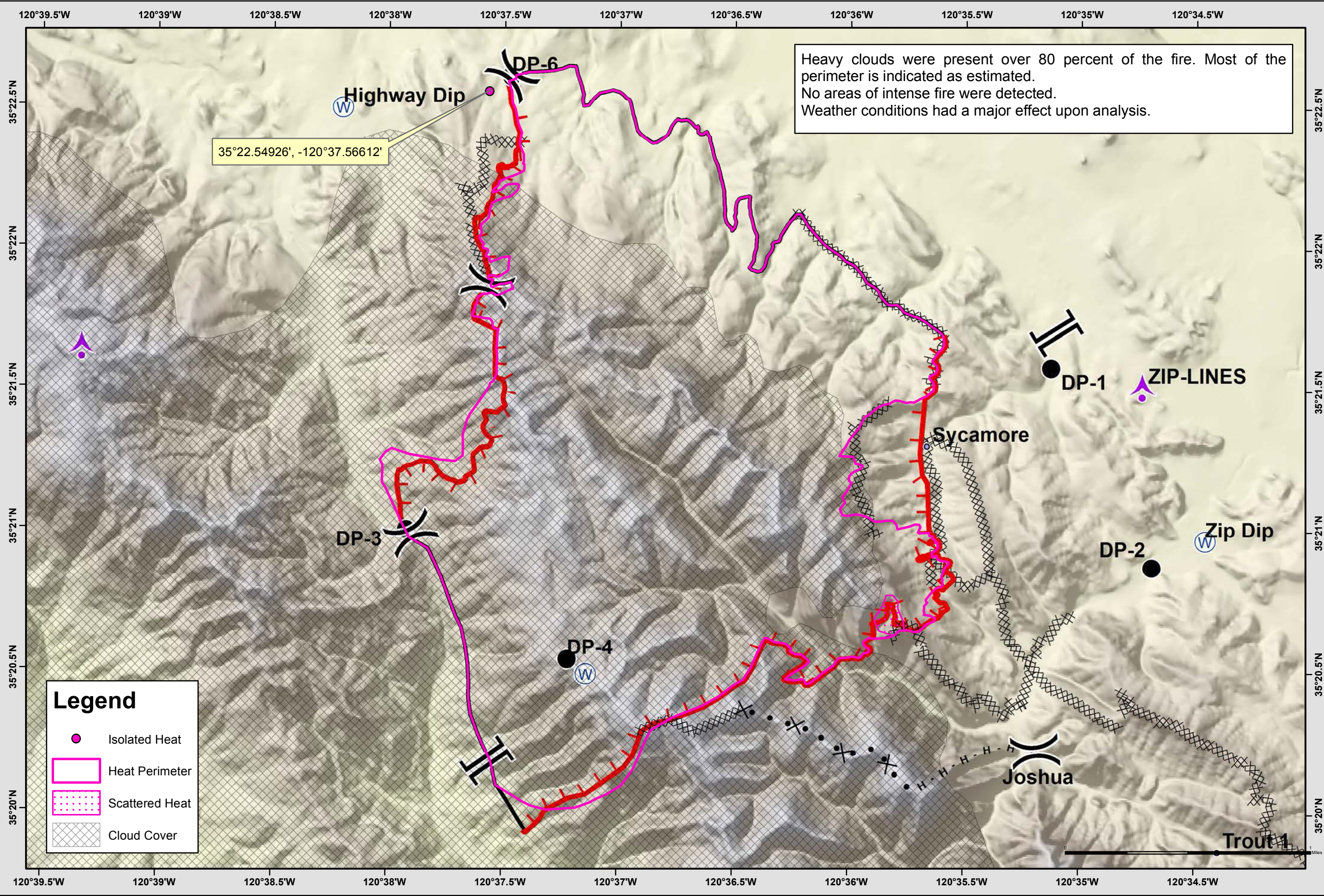
Aug 21, 2015  
IR Flight  
08/20/2015  
2200 hrs

- Legend**
- ( ) Division
  - || Branch
  - ▲ Aerial Hazard
  - Drop Point
  - Incident Command Post
  - Ⓡ Repeater
  - Ⓢ Staging Area
  - Ⓜ Water Source
  - Ⓜ Helibase
  - Ⓜ Cabin
  - ▬ Uncontrolled Fire Edge
  - ⓧ Completed Dozer Line
  - ▬ Completed Line
  - ⓧ Transmission Lines
  - Wilderness

- Legend**
- Isolated Heat
  - ▬ Heat Perimeter
  - ▨ Scattered Heat
  - ⓧ Cloud Cover

Heavy clouds were present over 80 percent of the fire. Most of the perimeter is indicated as estimated.  
No areas of intense fire were detected.  
Weather conditions had a major effect upon analysis.

35°22.54926', -120°37.56612'



NAD83  
1:23,114