

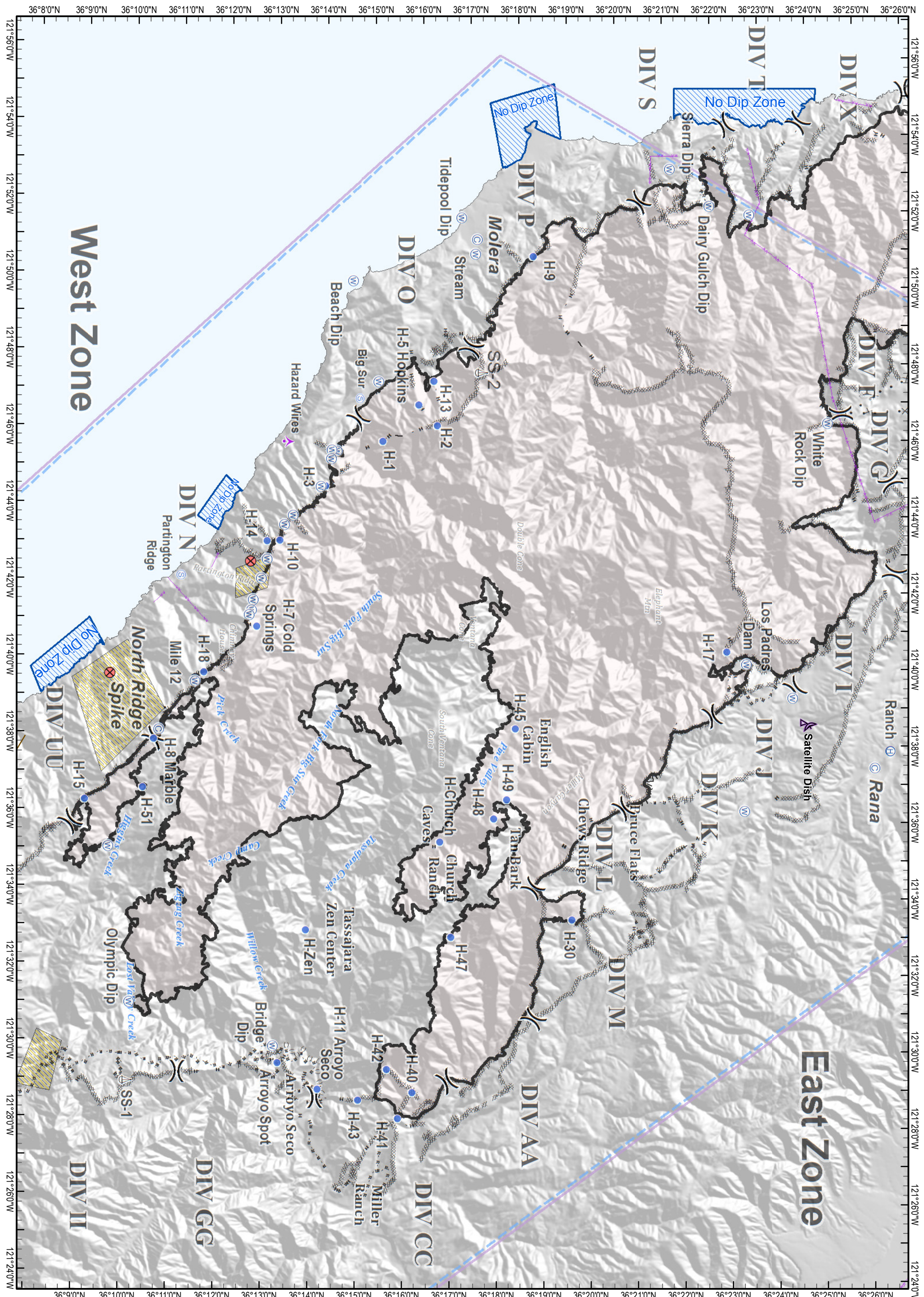
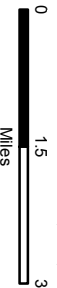
# Air Operations

Soberanes  
CA-BEU-003422  
10/13/2016

- (X) Division Break
- (A) Aerial Hazard
- (C) Camp
- (H) Helibase
- (H) Helispot
- (S) Staging Area
- (W) Water Source
- (X) Relatant Avoidance Area
- Completed Line
- R-R Road as Completed Line
- / — Line Break Completed
- xxxxx Completed Dozer Line
- H Hand Line
- X • Proposed Dozer Line
- Planned Fire Line
- ( ) Ridge/Geographic Feature
- Transmission Lines
- TFR
- California Condor Habitat
- No Dip Zone



Air Ops  
Mobile Map



NAME	TYPE	LATITUDE	LONGITUDE	ELEVATION	COMMENTS
Hazard Wires	Aerial Hazard	N36° 13.275'	W121° 45.671'	453	
Cabin Spike	Camp	N36° 18.383'	W121° 28.647'	3200	English Cabin
Hunter Liggett	Camp	N36° 3.777'	W121° 18.166'	1179	
Indian Spike	Camp	N36° 7.071'	W121° 27.917'		Indian Rangert Station
Molera	Camp	N36° 17.221'	W121° 51.021'	33	
North Ridge	Camp	N36° 10.696'	W121° 38.124'	3935	
Rana	Camp	N36° 25.804'	W121° 37.417'	1022	
Ranch	Helibase	N36° 26.133'	W121° 37.871'	958	
Tassajara Torch Base	Helibase	N36° 24.049'	W121° 34.821'	1580	Junction of Carmel Valley Rd & Tassajara Rd
Tusi	Helibase	N35° 39.620'	W121° 14.206'	0	Fort Hunter Liggett
Miller Helibase/Mobile Retardant Base	Helibase	N36° 14.753'	W121° 25.811'	682	
H-1	Helispot	N36° 15.320'	W121° 45.720'	2042	Along indirect handline
H-2	Helispot	N36° 17.330'	W121° 47.563'	3471	Adjacent to Mount Manuel
H-3	Helispot	N36° 14.118'	W121° 44.539'	2615	Along North Coast Ridge Road
H-5 Hopkins	Helispot	N36° 16.062'	W121° 46.690'	2531	Grassy Bench on Hopkins Ridge
H-7 Cold Springs	Helispot	N36° 12.726'	W121° 40.849'	3272	Pull out along road
H-8 Marble	Helispot	N36° 10.596'	W121° 37.875'	3871	Dust abatement REQUIRED
H-9	Helispot	N36° 18.410'	W121° 50.622'	1358	Pad is grass adjacent to Safety Zone - Gentle Slope
H-10	Helispot	N36° 13.184'	W121° 43.106'	2942	
H-11 Arroyo Seco	Helispot	N36° 14.155'	W121° 28.810'	884	Concrete pad above Seco day use
H-13	Helispot	N36° 16.365'	W121° 47.317'	1766	
H-14	Helispot	N36° 12.918'	W121° 43.077'	2853	
H-15	Helispot	N36° 9.154'	W121° 36.282'	3477	
H-16	Helispot	N36° 6.825'	W121° 31.698'	4488	On dozer line, dust abatement REQUIRED
H-17	Helispot	N36° 22.635'	W121° 40.387'	1896	Type II
H-18	Helispot	N36° 11.622'	W121° 39.628'	3807	Type 3 only; one way in, one way out; needs dust abatement
H-30	Helispot	N36° 19.473'	W121° 33.325'	3860	
H-40	Helispot	N36° 16.160'	W121° 28.745'	2030	
H-41	Helispot	N36° 15.873'	W121° 28.096'	1870	
H-42	Helispot	N36° 15.601'	W121° 29.357'	2620	
H-43	Helispot	N36° 15.013'	W121° 28.540'	2220	
H-45	Helispot	N36° 18.219'	W121° 38.287'	3200	
H-46	Helispot	N36° 7.08'	W121° 27.64'	2100	Very close to Hunter Liggett use 126.200 radio frequency
H-47	Helispot	N36° 16.93'	W121° 32.83'	4000	
H-48	Helispot	N36° 17.781'	W121° 35.926'	4725	
H-49	Helispot	N36° 18.055'	W121° 36.424'	4400	
H-60	Helispot	N36° 3.732'	W121° 18.401'	1248	
H-70	Helispot	N36° 12.877'	W121° 45.359'	253	
H-71 Devils Canyon	Helispot	N36° 4.380'	W121° 35.599'	901	
Arroyo Spot	Helispot	N36° 13.310'	W121° 29.480'	1125	Type 2
H-CHP	Helispot	N36° 1.286'	W121° 32.837'	502	
H-Church	Helispot	N36° 16.657'	W121° 35.292'	2593	
H-Toro	Helispot	N36° 35.327'	W121° 41.604'	436	Powerlines along ridge to East - Trees to West & South
H-Zen	Helispot	N36° 13.865'	W121° 32.955'	1717	
	Incident Command Post	N36° 36.257'	W121° 41.564'	157	
Chimney	Other	N36° 12.106'	W121° 40.095'	3649	
Pinyon Peak IP Check	Other	N36° 29.344'	W121° 47.248'	2223	
Ventana Cone Check	Other	N36° 17.788'	W121° 42.370'	4191	Rotor Wing travel along South Route
Wires Check Point	Other	N36° 24.803'	W121° 46.401'	2024	
	Restricted Water Source	N36° 27.650'	W121° 42.508'	414	
Miller Helibase/Mobile Retardant Base	Retardant/Mud Pit	N36° 14.753'	W121° 25.811'	682	
Hill Mobile Retardant Base	Retardant/Mud Pit	N36° 17.698'	W121° 51.698'	139	
SS-1	Sling Site	N36° 10.112'	W121° 28.963'	3359	
Big Sur	Staging Area	N36° 14.815'	W121° 46.826'	304	
Carmel	Staging Area	N36° 34.432'	W121° 54.843'	465	
Partington Ridge	Staging Area	N36° 11.113'	W121° 42.157'	535	
Rancho	Staging Area	N36° 32.071'	W121° 52.377'	74	
Arroyo Seco Dip Site	Water Source	N36° 14.390'	W121° 26.252'	650	Long Line Only
Beach Dip	Water Source	N36° 14.622'	W121° 49.894'	0	
Bridge Dip	Water Source	N36° 13.200'	W121° 29.920'	1209	Long Line Only
Carmel Dip	Water Source	N36° 27.559'	W121° 43.397'	867	
Dairy Gulch Dip	Water Source	N36° 22.080'	W121° 52.020'	774	
Fountain Dip	Water Source	N36° 31.799'	W121° 52.733'	161	
Hydrant 2	Water Source	N36° 27.962'	W121° 42.792'	370	
Island Dip	Water Source	N36° 12.922'	W121° 45.387'	342	Trees on island
Los Padres Dam	Water Source	N36° 23.054'	W121° 40.068'	1043	Center dip only
Mile 12	Water Source	N36° 11.441'	W121° 39.39'	3749	
Mossy Dip	Water Source	N36° 30.192'	W121° 49.187'	840	
Ocean Hill Dip	Water Source	N36° 17.368'	W121° 51.999'	43	
Olympic Dip	Water Source	N36° 10.162'	W121° 31.008'	1573	Long Line Only
Resort Dip	Water Source	N36° 27.519'	W121° 47.930'	1342	
Sierra Dip	Water Source	N36° 21.240'	W121° 52.970'	1102	
Stream	Water Source	N36° 17.196'	W121° 50.650'	31	
Tidepool Dip	Water Source	N36° 16.889'	W121° 51.585'	6	
White Rock Dip	Water Source	N36° 24.684'	W121° 46.407'	1782	
	Water Source	N36° 22.926'	W121° 51.807'	856	
	Water Source	N36° 15.209'	W121° 47.272'	201	
	Water Source	N36° 14.357'	W121° 45.445'	1827	
	Water Source	N36° 14.240'	W121° 45.467'	1731	
	Water Source	N36° 14.023'	W121° 44.517'	2581	
	Water Source	N36° 13.452'	W121° 43.755'	2702	
	Water Source	N36° 13.271'	W121° 43.512'	2725	
	Water Source	N36° 14.228'	W121° 45.246'	1939	
	Water Source	N36° 12.813'	W121° 42.097'	3174	
	Water Source	N36° 12.641'	W121° 41.541'	3344	
	Water Source	N36° 12.922'	W121° 42.593'	3014	
	Water Source	N36° 12.612'	W121° 41.270'	3419	
	Water Source	N36° 12.570'	W121° 41.149'	3407	
	Water Source	N36° 24.054'	W121° 39.211'	946	