



ALASKA

INCIDENT MANAGEMENT

T E A M

SOBERANES FIRE

CA-BEU-003422

PNKG7Z Override Code USFS 1502



OPERATIONAL PERIOD

Monday, AUGUST 29th 0700

to

Tuesday, AUGUST 30th 0700

**Ground Support, Transportation, Fueling, Weed
Wash has moved to ICP. Follow signs at
Entrance.**

INCIDENT OBJECTIVES1. Incident Name
Soberanes2. Date Prepared
08/28/163. Time Prepared
1900**4. Operational Period – 08/29/16****Management Objectives:**

- Provide for firefighter and public safety through the application of sound risk management analysis and the implementation of appropriate mitigations.
- Protect communities, infrastructure, utilities, improvements, historical assets, and the Ventana watershed.
- Ensure cost containment measures are identified and applied.
- Enhance community relations and political relationships through timely information exchange.
- Provide for initial attack assistance at the request of Monterey Ranger District of the Los Padres National Forest.
- Demonstrate principles of respect and dignity.

Control Objectives:

- Complete suppression repair activities at the north end of the fire in Branches I, II, and IX.
- Protect private property, surrounding communities, and values at risk by keeping the fire:
 - North of Nacimiento-Ferguson Road to limit fire growth toward values to the south.
 - West of Carmel Valley and Reliz Canyon to avoid impacts to the communities along the Highway 101 corridor and Fort Hunter Liggett Military Reservation.
 - East of Highway 1 to protect the visual corridor of this National Scenic Byway.
- When possible, minimize adverse effects to the Ventana Wilderness area by using minimum impact suppression tactics (MIST). Where opportunities exist, use natural features and preexisting containment lines. Consult with Resource Advisers to ensure tactics are compatible with social, economic, and environmental values.

Command Emphasis:

Protect values at risk by using a combination of direct and indirect tactics to suppress the fire. A key element of the strategy is to apply the right resources, to the right task, at the right time, for the right duration in order to achieve objectives with minimum firefighter exposure.

Situational Awareness:

Incident personnel understand daily operational direction for all phases of the incident. Personnel take responsibility for their own personal safety as well as the safety of others, and take corrective action where appropriate. Everyone assigned to the incident understands their roles and responsibilities within the incident medical plan and the incident emergency plan.

Stop, think, talk... then act in response to any situation that may represent unnecessary exposure.

9. Prepared By (Planning Section Chief)
Peter Butteri /s/10. Approved By (Incident Commander)
Tom Kurth /s/

ORGANIZATION ASSIGNMENT LIST

1. Incident Name	
Soberanes	
2. Date 08/28/2016	3. Time 2200
4. Operational Period 08/29/2016 0700 MON to 08/30/2016 0700 TUE	
5. Incident Commander and Staff	
Position	Name
Incident Commander	Tom Kurth / Norm McDonald ICT2(t)
Deputy	Tony Doty
Safety Officer	Tom Hudson / Greg Arkle(t) / David Stone
Information Officer	Pete Buist / Tim Mowry (t)
Human Resources	Andrea Cabida / Sue Warren
Liaison Officer	Warner McGrew
6. Agency Representative	
Agency	Name
USFS Agency Admin	Bob Baird
CAL Fire Agency Admin	Brennan Blue
USFS Agency Admin Rep	Tim Short / Sue Exline
CAL OES	Ken Hood
MOCO OES	Dick Bower
Monterey PRPD	Caine Carmarillo / Joseph Narvaez
California Highway Patrol	Rob Kaczor
California State Parks	Sean James
Big Sur Fire Brigade	Martha Karstens / Frank Pinney
CA Conservation Corp	Amy Duncan
SACC	Tony Collins
7. Planning Section	
Position	Name
Chief	Ilene Wadkins / Peter Butteri / Harold West / John Saddler [Molera](t)
Resources Unit	Jan Passek / Jodi Rist / Julie Vorachek(t) / Lawrence Crane(t)
Situation Unit	Kristi Bulock / Jim Silva / Mike Hill(t) / Scott Bliss [Molera](t)
Documentation	Joseph Blazek / KT Pyne(t)
Demobilization	Jim Cooley / Ed Paul / Don Watson
Fire Behavior Analyst	Robert Ziel / Chris Moore(t)
Training Specialist	Greg White / Dennis Martin(t)
GIS Specialist	Lasheena Nieves / Dan Labarre / Leah Jones(t)
Technology Support Specialist	Bill Beach / Hannah Semock(t)
IMET	Ryan Wallbrun / Brent Bowers(t)
Air Resource Advisor	Randy Striplin / Robert Elleman(t)
8. Logistic Section	
Position	Name
Chief	Jerri Webster / Janet Ladd [Molera] / Rusty Hippchen LSC2(t)
Supply Unit	John Hoch
Facilities Unit	Richard Bidasolo [Molera] / Bryan Seibold
Ground Support	Darren Rathbun
Communications	Lindsey Lien
Food Unit	Ed Haen
Medical	Chuck Passek / Eric Ulwelling(t)
Supply	Steve Streissguth
Security	Frank Antos / Bill Alexander [Molera]

9. Operations Section		
Day Ops Section Chief	Russ Long	
Night Ops Section Chief	Robert Bertolina	
Planning Ops	Jayson Coil / Kyle Cowan(t)	
Branch	I / II / IX / Suppression Repair	
Branch	Jonathan Pangburn	
Division	Supp 1	James McDaniel
Division	Supp 6	Stew McMorrow
Branch	III / IV	
Branch	Doug Downs	
Division	J/K	Shane Martin
Division	M / AA / CC / EE	Togie Wiehl / Seth Ross(t)
Division	East Structure Group	Dana Bagnoli
Division	East Firing Group	Derek Patton
Branch	V	
Branch	Jeff Schardt	
Division	GG	Jeffrey Stark
Division	II	Craig Martin
Branch	VII / VIII	
Branch	Russ Copp / Willie Branson(t)	
Branch	Planning [Molera]	Branden Petersen / Matt Brown(t)
Division	Big Sur Structure Group	Gary Baumgartner
Division	Big Sur Firing Group	Kurt Larue
Division	Molera Staging	
Division	N	Patrick Moore / William McCall(t)
Division	O / P	Ezra Stiles
Division	UU	Mark Johnson / Johnny Villa(t)
Branch	Night	
Night Ops	Robert Bertolina	
Division	N / O / P	Brian Pontes
Branch	Toro IA	
Division	James Rourks / Jason Lago(t)	
Air Operations Branch		
Air Ops Branch Director	Bruce Wicks	
Deputy Air Ops Branch Director	Ken Bingham	
Air Support Supervisor	Kevin Murray / Teresa Williamson(t) / Eric Verdries(t)	
Helibase Manager	Curt Warner	
Helicopter Coordinator	Eric Haskins	
Air Attack Supervisor	Richard Webster / Mark Nunez	
10. Finance Section		
Position	Name	
Chief	Billy Zamora	
Deputy	Barb Haxby	
Time Unit	Rhonda Schwehm / Beth Chandler(t)	
Procurement Unit	Patrick Gallegos	
Compensation Unit / Claims	Tracy Nicholson / Rodger Waters	
Cost Unit	Bonnie Amaral	
Prepared by (Resource Unit Leader)		
Lawrence Crane	<i>Lawrence Crane</i> RRSKH	



Soberanes Fire Weather Forecast



FORECAST NO: 37

NAME OF FIRE: Soberanes

PREDICTION FOR: 0600-2200 Mon

UNIT: CA-BEU/LPF MRD

SHIFT DATE: Monday Aug 29th, 2016

SIGNED: Ryan Walbrun

TIME AND DATE

Incident Meteorologist

FORECAST ISSUED: 1900 8/28/16

Dry frontal passage late this afternoon and overnight

WEATHER DISCUSSION: High pressure will stay in place this morning through early afternoon with a 2000 foot marine layer keeping warm and dry conditions in the hills. Humidity values will start out very dry again this morning and gradually rise through the day. Winds will be light through midday from the west to northwest. By 1500 hours the seabreeze will combine with increasing northwest winds aloft especially along the Big Sur Coast in Branch 8. Northerly winds will increase through the evening and overnight hours as a system moves through Northern California. Winds will be adverse to the line and strong in all of Branch 8 especially near Cold Spring where overnight gusts to 25 mph will be likely from the northeast.

WEATHER FORECAST For Monday:

WEATHER: Patchy morning clouds and fog otherwise sunny. Smoke over the fire. Becoming windy by afternoon in Branch 8.

TEMPERATURES: Highs 82-92 above 2000 feet...70s lower slopes and Hwy 1. **24 HR trend-** little change

HUMIDITY: Starting out 12-22% and slowly rising through the day. **24 HR trend-** 4-8% drier

20 FT WINDS:

RIDGETOP - Northwest 4-8 mph increasing 8-15 mph after 3 pm with gusts 20 mph. Strongest in Branch 8 above Big Sur.

SLOPE/VALLEY - Upslope/upcanyon 4-7 mph afternoon gusts 10-12 mph.

Marine Layer: Around 2000 feet but clouds clearing early.

WEATHER FORECAST For Monday Night:

WEATHER: Mostly clear. Becoming windy Branch 8 near the coast and over interior of the fire.

TEMPERATURES: Lows 65-70 above 2000 feet. 50s lower elevations.

HUMIDITY: Slowly rising 25-35% overnight.

20 FT WINDS:

RIDGETOP - North to Northeast 10-20 mph gusts to 25 mph Branch 8.

SLOPE/VALLEY - Evening upcanyon 5-10 mph staying northerly overnight.

Marine Layer: 2000 feet but poorly defined due strong winds and frontal passage.

EXTENDED FORECAST: Gusty Northwest winds continue into Tuesday behind the frontal passage. A general trend for slightly cooler temperatures with better humidity recovery at least through midweek with an upper level trough setting up over the state.

Portable RAWS Frequency: 163.350 DTMF tones 0032 for H3, 0033 Anderson, 0029 Blue Rock, 0038 Chew Ridge, 0039 Tassajara, 0031 Memorial and 0037 Coastal Ridge.

FIRE BEHAVIOR FORECAST

FORECAST NUMBER 37	TYPE OF FIRE Wildfire
FIRE NAME Soberanes	OPERATIONAL PERIOD 8-29-2016 24 HOUR SHIFT
DATE ISSUED 8-28-2016	TIME ISSUED 1900 HOURS
UNIT CALFIRE BEU & USFS LOS PADRES NF	SIGNED /s/ Robert Ziel FBAN Chris Moore FBAN(t) /

INPUTS

WEATHER SUMMARY ***Marine layer around 2000'. Warm and dry conditions above. ***

Temps: Highs 82-92 interior, 70s on lower slopes and along the coast. Lows: 65-70 above the marine layer.

RH: Above 2000' 12-22%. Overnight 25-35%.

Winds: Ridges NW 4-8mph increasing to 8-15 mph after 1500 with gusts to 20mph.

Interior: Slope winds upslope 4-7 mph day, gusts 10-12mph.

Night: N to NE 10-20 mph gusts to 25 in Branch VIII. Slope/valley- Evening upcanyon 5-10 staying northerly overnight.

ERC 75 1hr 3-5% **Pig 80%** **Rate of spread head fire in brush 60-80cph** **Spotting up to ½ mile**

OUTPUTS

FIRE BEHAVIOR

GENERAL

All classes of fuels are critically dry. Heavier fuels at the bottom of moist drainages will slow the progression of the fire into and across creeks. The fire is now burning primarily in a mix of brush and oak burned in the 2008 Basin Fire. Snags, skeleton brush and heavy downed fuels are abundant and will increase the fire line intensity. Fire burning on ridges and exposed areas will show increased behavior in the afternoon as the winds switch to northwest. Fire burning in sheltered areas or drainage bottoms may not see any increased activity if the wind does not reach canyon bottoms.

In the old burn scars, shrub fuels are not burning aggressively unless sun, aspect, and slope drainage winds align to produce headfire runs. **The predicted winds, northwest switching to north-northeast in the evening, could increase fire behavior significantly from what we have seen in the last few days especially on ridges, exposed slopes and aligned drainages.** 10-20' flame lengths in brush fuels should be expected.

SPECIFIC

BRANCH I, II, IX

No forward fire progression is expected.

BRANCH III, IV, V

Fire has established itself in the Carmel River drainage above the Los Padres Reservoir. The moist drainage bottom has been limiting fire spread. Expect this trend to continue tomorrow if the drainage bottom remains sheltered from the wind.

Near Miller Mountain and above the English Cabin any heat remaining will become active when exposed to the wind. English Cabin is about a ½ mile from the fires edge and could become threatened if there is any new fire spread.

Fire will continue to fill in the unburned pocket north and east of Double Cone.

Branch VIII

DIV O/P – In patrol status. No forward fire progression expected despite hot spots burning interior.

DIV N - The fire is well established in the South Fork of Big Sur River and Mocho Creek. South Fork of Big Sur is aligned northwest to southeast. Forecast winds will spread fire to the southeast and possibly south, slopping over into Pick Creek. Mocho Creek is aligned north to south and could funnel the fire south into Logwood Creek and toward the containment line south of Cold Springs.

Branch VII

DIV UU – Fire is not expected to reach the division in this burn period.

AIR OPERATIONS

Expect the marine layer to lift around 1000-1100.

SAFETY

Strong winds are a change to the weather we have experienced over the fire. Pay attention to the direction the fire is moving versus the local winds you are experiencing. Any fire weakened trees will be more likely to fall with the stronger winds.

Division/Group Assignment List (ICS 204 WF)

1. Incident Name:			3.			
SOBERANES			I,II,IX		SUPP REPAIR 1	
2. Operational Period:						
Date/Time From: 08/29/2016 0700 MON		Date/Time To: 08/30/2016 0700 TUE				
4. Operations Personnel						
OPERATIONS CHIEF		RUSS LONG		BRANCH DIRECTOR		JONATHON PANGBURN
PLANNING OPERATIONS		JAYSON COIL KYLE COWAN (T)		DIVISION/GROUP SUPERVISOR		JAMES MCDANIEL
AIR ATTACK SUPERVISOR		RICH WEBSTER		SAFETY OFFICER		MARK PATINO
5. Resources Assigned this Period						
Strike Team / Task Force / Resource Designator		LWD	Leader	Number Persons	Drop Off PT./Time	Pick Up PT./Time
STG BEU 9489G C-254		09/01	KEVIN DIXON	33	DP 7/0700	DP 7/1900
DOZ T3 PVT ULSH E-965			DALE ULSH	1	DP 7/0700	DP 7/1900
EXC PVT VARIAN E-797			MICAH EVESAN	1	DP 7/0700	DP 7/1900
BKH PVT VENTANA E-1081			AL CAMACHO	1	DP 7/0700	DP 7/1900
HEQB O-354		09/02	STEVE ESTES	1	DP 7/0700	DP 7/1900
EMPF O-10365		09/05	SCOTT OWEN	1	DP 7/0700	DP 7/1900
6. Control Operations/Work Assignments:						
<p>TASK: Complete suppression rehab per rehab guidelines. PURPOSE: Repair suppression damage and minimize potential for negative post fire effects. END STATE: Resources, lands, and facilities in this geographic area which have been damaged by fire management activities have been returned to pre-management condition to the extent practical.</p>						
7. Special Instructions:						
<p>Resources dispatched to a division from staging are required to receive a briefing specific to their assignment. The Communications Plan is complex; please review the ICS 205 with all division personnel. Use headlights. Slow down. Assume there is a vehicle around each corner. LOOK UP. Be aware of hazard trees. DIVS, TFL, and HEQB must account for and certify all hired equipment shift tickets during the operational period. Division Supervisors: Please report to Fire Apportionment to validate the previous day's ICS-204s. Check for ticks.</p>						
8. Division/Group Communication Summary						
Function	Channel	RX Frequency N/W	RX Tone/NAC	TX Frequency N/W	TX Tone/NAC	Mode
TACTICAL	6	154.2725N	156.7	154.2725N	156.7	A
MEDICAL	15	156.0750N	156.7	156.0750N	156.7	A
AIR TO GROUND	14	159.2700N	192.8	159.2700N	192.8	A
EMERGENCY	16	168.6250N		168.625N	110.9	A
9. Prepared By (Resource Unit Leader)			Approved By (Planning Section Chief)		Date	Time
JULIE VORACHEK			PETER BUTTERI		08/28/2016	2015

Division/Group Assignment List (ICS 204 WF)

1. Incident Name:			3.			
SOBERANES			Branch:		Division/Group:	
2. Operational Period:			I, II, IX		SUPP REPAIR 6	
Date/Time From: 08/29/2016 0700 MON	Date/Time To: 08/30/2016 0700 TUE					
4. Operations Personnel						
OPERATIONS CHIEF		RUSS LONG		BRANCH DIRECTOR		JONATHAN PANGBURN
PLANNING OPERATIONS		JAYSON COIL KYLE COWAN (T)		DIVISION/GROUP SUPERVISOR		STEW MCMORROW
AIR ATTACK SUPERVISOR		RICH WEBSTER		SAFETY OFFICER		MARK PATINO
5. Resources Assigned this Period						
Strike Team / Task Force / Resource Designator		LWD	Leader	Number Persons	Drop Off PT./Time	Pick Up PT./Time
CRW T1 BEU GABILAN 3 C-232		09/01	DAMON L JAMESON	15	DP 36/0700	DP 36/1900
CRW T2 CHEVAK #1 C-10108		09/08	LEO MOSES	20	DP 36/0700	DP 36/1900
CRW T2 CHEVAK #2 C-10109		09/08	STEVEN WALKER	20	DP 36/0700	DP 36/1900
CRW T2 HUSLIA #1 C-10106		09/08	DARRELL SAM	20	DP 36/0700	DP36/1900
FALM CASTRO O-704		08/10	JESUS SALINA	2	DP 36/0700	DP 36/1900
DOZ T2 VENTANA E-10320		08/04	TOM NASON	1	DP 36/0700	DP 36/1900
DOZ T2 PVT LENAHAN'S E-1103		08/22	JOHN MUNTZ	2	DP 36/0700	DP 36/1900
W/T - T2 - STATEWIDE FIRE SUPPORT SERVICE E-353			STEVEN RADDIGAN	2	DP 36/0700	DP 36/1900
W/T T1 PVT INDUSTRIAL E-10133		08/29	SCOTT HAVEY	1	DP 36/0700	DP 36/1900
EXC PVT GRAHAM E-10057		08/18	JEFF GRAHAM	2	DP 36/0700	DP 36/1900
EXC PVT GRAHAM E-177		08/06	CLAYTON GRAHAM	2	DP 36/0700	DP 36/1900
MASTICATOR - BOOM MOUNTED - T2 - VENTANA RANCH & VINEY E-10322		09/07	ROBIN MULLINIX	1	DP 36/0700	DP 36/1900
CHIP PVT STATEWIDE E-1130		08/24	ADAM RADDIGAN	2	DP 36/0700	DP 36/1900
CHIP PVT TDE E-1131		08/23	NICK MIGNERON	2	DP 36/0700	DP 36/1900
HEQB O-10158		08/31	LAKOTA BURWELL	1	DP 36/0700	DP 36/1900
RESP O-1452		08/29	GUY ANDERSON	1	DP 36/0700	DP 36/1900
HEQB (T) O-518			GARRETT BULLIS	1	DP 36/0700	DP 36/1900
FSRS O-1471		09/04	JACK HARVEY	1	DP 36/0700	DP 36/1900
8. Division/Group Communication Summary						
Function	Channel	RX Frequency N/W	RX Tone/NAC	TX Frequency N/W	TX Tone/NAC	Mode
TACTICAL	8	154.3025N	156.7	154.3025N	156.7	A
MEDICAL	15	156.0750N	156.7	156.0750N	156.7	A
AIR TO GROUND TAC	14	159.2700N	192.8	159.2700N	192.8	A
EMERGENCY	16	168.6250N		168.6250N	110.9	A
9. Prepared By (Resource Unit Leader)			Approved By (Planning Section Chief)		Date	Time
JULIE VORACHEK			PETER BUTTERI		08/28/2016	2015

Division/Group Assignment List (ICS 204 WF)

1. Incident Name:			3.			
SOBERANES			I, II, IX		SUPP REPAIR 6	
2. Operational Period:						
Date/Time From: 08/29/2016 0700 MON		Date/Time To: 08/30/2016 0700 TUE				
4. Operations Personnel						
OPERATIONS CHIEF		RUSS LONG		BRANCH DIRECTOR		JONATHAN PANGBURN
PLANNING OPERATIONS		JAYSON COIL KYLE COWAN (T)		DIVISION/GROUP SUPERVISOR		STEW MCMORROW
AIR ATTACK SUPERVISOR		RICH WEBSTER		SAFETY OFFICER		MARK PATINO
5. Resources Assigned this Period						
Strike Team / Task Force / Resource Designator		LWD	Leader	Number Persons	Drop Off PT./Time	Pick Up PT./Time
FSRS O-1473		09/05	BRANDON RODGERS	1	DP 36/0700	DP 36/1900
THSP O-1396			NICHOLAS SHEW	1	DP 36/0700	DP 36/1900
EMPF O-10209		08/30	JOBEE FARRER	1	DP 36/0700	DP 36/1900
EMPF O-1320		08/29	LEIF JULIUSSEN	1	DP 36/0700	DP 36/1900
EMPF O-1321		08/29	PAUL JOSEPH SOLIS	1	DP 36/0700	DP 36/1900
6. Control Operations/Work Assignments:						
<p>TASK: Complete suppression rehab per rehab guidelines.</p> <p>PURPOSE: Repair suppression damage and minimize potential for negative post fire effects.</p> <p>END STATE: Resources, lands, and facilities in this geographic area which have been damaged by fire management activities have been returned to pre-management condition to the extent practical. This effort consists of rolling berms, installing drivable water bars, and replacing topsoil. None of the actions taken would limit the ability to use the line as a secondary control feature.</p>						
7. Special Instructions:						
<p>Resources dispatched to a division from staging are required to receive a briefing specific to their assignment.</p> <p>The Communications Plan is complex; please review the ICS 205 with all division personnel.</p> <p>Use headlights. Slow down. Assume there is a vehicle around each corner. LOOK UP. Be aware of hazard trees.</p> <p>DIVS, TFL, and HEQB must account for and certify all hired equipment shift tickets during the operational period.</p> <p>Division Supervisors: Please report to Fire Apportionment to validate the previous day's ICS-204s.</p> <p>Watch for overhead power lines and propane tanks.</p>						
8. Division/Group Communication Summary						
Function	Channel	RX Frequency N/W	RX Tone/NAC	TX Frequency N/W	TX Tone/NAC	Mode
TACTICAL	8	154.3025N	156.7	154.3025N	156.7	A
MEDICAL	15	156.0750N	156.7	156.0750N	156.7	A
AIR TO GROUND TAC	14	159.2700N	192.8	159.2700N	192.8	A
EMERGENCY	16	168.6250N		168.6250N	110.9	A
9. Prepared By (Resource Unit Leader)			Approved By (Planning Section Chief)		Date	Time
JULIE VORACHEK			PETER BUTTERI		08/28/2016	2015

Division/Group Assignment List (ICS 204 WF)

1. Incident Name:			3.			
SOBERANES			III / IV		J/K	
2. Operational Period:						
Date/Time From: 08/29/2016 0700 MON		Date/Time To: 08/30/2016 0700 TUE				
4. Operations Personnel						
OPERATIONS CHIEF		RUSS LONG		BRANCH DIRECTOR		DOUG DOWNS
PLANNING OPERATIONS		JAYSON COIL KYLE COWAN (T)		DIVISION/GROUP SUPERVISOR		SHANE MARTIN
AIR ATTACK SUPERVISOR		RICH WEBSTER		SAFETY OFFICER		JACK WISE TRAVIS DOTSON (T)
5. Resources Assigned this Period						
Strike Team / Task Force / Resource Designator		LWD	Leader	Number Persons	Drop Off PT./Time	Pick Up PT./Time
CREW - T1 - CARSON HOTSHOTS IHC C-10115		09/08	TIM MEMMER	22	DP 36/0700	DP 36/1900
6. Control Operations/Work Assignments:						
<p>TASK: Monitor Fire Activity and Develop Strategy/MAPs that identify a high probability of success for holding line. PURPOSE: To ensure a coordinated firing action occurs if fire threatens line. END STATE: A plan and MAP is created that allows for adequate time to staff appropriately to conduct a successful firing operation</p>						
7. Special Instructions:						
<p>The Communications Plan is complex; please review the ICS 205 with all Division personnel. DIVS, TFL, and HEQB must account for & certify all hired equipment shift tickets during the operational period. Division Supervisors: Please report to Fire Apportionment to validate the previous day's ICS-204s. Use headlights. Slow down. Assume there is a vehicle around each corner. Honk horn before going around blind corners.</p>						
8. Division/Group Communication Summary						
Function	Channel	RX Frequency N/W	RX Tone/NAC	TX Frequency N/W	TX Tone/NAC	Mode
TACTICAL	12	151.1375N	156.7	151.1375N	156.7	A
MEDICAL	15	156.0750N	156.7	156.0750N	156.7	A
AIR TO GROUND TAC	14	159.2700N	192.8	159.2700N	192.8	A
EMERGENCY	16	168.6250N		168.6250N	110.9	A
9. Prepared By (Resource Unit Leader)			Approved By (Planning Section Chief)		Date	Time
JULIE VORACHEK			PETER BUTTERI		08/28/2016	2015

Division/Group Assignment List (ICS 204 WF)

1. Incident Name:			3.			
SOBERANES			III / IV		EAST STRUCTURE GRP	
2. Operational Period:						
Date/Time From: 08/29/2016 0700 MON		Date/Time To: 08/30/2016 0700 TUE				
4. Operations Personnel						
OPERATIONS CHIEF		RUSS LONG		BRANCH DIRECTOR		DOUG DOWNS
PLANNING OPERATIONS		JAYSON COIL KYLE COWAN (T)		DIVISION/GROUP SUPERVISOR		DANA BAGNOLI
AIR ATTACK SUPERVISOR		RICH WEBSTER		SAFETY OFFICER		JACK WISE TRAVIS DOTSON (T)
5. Resources Assigned this Period						
Strike Team / Task Force / Resource Designator		LWD	Leader	Number Persons	Drop Off PT./Time	Pick Up PT./Time
ENG 6 CUBA RD E-10282		09/01	KYLE SANDOVAL	3	TORO/0700	TORO/1900
SOBERANES TASK FORCE #1			JOHN GARRETT O-1480	1	TORO/0700	TORO/1900
RETURNING HEROES C-10117			TERRELL L TREAT	20	TORO/0700	TORO/1900
ENG 3 GOLDER RANCH BRUSH 307 E-10276		09/07	COLIN PORT	4	TORO/0700	TORO/1900
ENG 3 MAYER E-2201 E-10273			TOM HANEY	3	TORO/0700	TORO/1900
ENG 6 CHIHUAHUA E-10261		09/08	CHARLES CLAPPER	3	TORO/0700	TORO/1900
ENG 6 NORTH N COUNTY FIRE MEDICAL BRUSH104 E-10253		09/08	STEVE FLORES	4	TORO/0700	TORO/1900
ENG 6 A/S ENG613 E-10246			MATT BUSTAMANTE	3	TORO/0700	TORO/1900
SOBERANES TASK FORCE #2			CHRIS BRENZEL O-1481	1	TORO/0700	TORO/1900
ENG 3 PEORIA E-10263		09/08	TYSON ESQUIBEL	4	TORO/0700	TORO/1900
ENG 3 DAISY MTN E-10274		09/08	JERRY KNORR	4	TORO/0700	TORO/1900
ENG 6 TUBAC E-10257			TIM ZAMORA	3	TORO/0700	TORO/1900
ENG 6 BENSON E-10265		09/08	KENNETH GAYNOR	3	TORO/0700	TORO/1900
W/T T2 PVT HOLT E-10134		08/29	KEN FOSTER	1	TORO/0700	TORO/1900
ENG 3 FARMINGTON BRUSH #4 E-10270		09/07	JARED J THORNBURG	3	TORO/0700	TORO/1900
ENG 3 BERNCO ENG54 E-10269			MIKE BENTON		TORO/0700	TORO/1900
8. Division/Group Communication Summary						
Function	Channel	RX Frequency N/W	RX Tone/NAC	TX Frequency N/W	TX Tone/NAC	Mode
TACTICAL	10	154.2875N	156.7	154.2875N	156.7	A
MEDICAL	15	156.0750N	156.7	156.0750N	156.7	A
AIR TO GROUND	14	159.2700N	192.8	159.2700N	192.8	A
EMERGENCY	16	168.6250N		168.625N	110.9	A
9. Prepared By (Resource Unit Leader)			Approved By (Planning Section Chief)		Date	Time
JULIE VORACHEK			PETER BUTTERI		08/28/2016	2015

Division/Group Assignment List (ICS 204 WF)

1. Incident Name:			3.			
SOBERANES			III / IV	EAST STRUCTURE GRP		
2. Operational Period:						
Date/Time From:	MON	Date/Time To:	TUE			
08/29/2016 0700		08/30/2016 0700				
4. Operations Personnel						
OPERATIONS CHIEF	RUSS LONG		BRANCH DIRECTOR	DOUG DOWNS		
PLANNING OPERATIONS	JAYSON COIL KYLE COWAN (T)		DIVISION/GROUP SUPERVISOR	DANA BAGNOLI		
AIR ATTACK SUPERVISOR	RICH WEBSTER		SAFETY OFFICER	JACK WISE TRAVIS DOTSON (T)		
5. Resources Assigned this Period						
Strike Team / Task Force / Resource Designator	LWD	Leader	Number Persons	Drop Off PT./Time	Pick Up PT./Time	
CRW T2IA SAN CARLOS #2 C-10118	09/09	JIMI PHILLIPS	19	TORO/0700	TORO/1900	
SOBERANES TASK FORCE #3		JOHN STEBNER 0-10325	1	TORO/0700	TORO/1900	
ENG 3 PINE TOP E-10262	09/08	MARCUM H ROVA JR	3	TORO/0700	TORO/1900	
ENG 6 ANTHIS FAMILY E-10284	09/08	JASON PHILLIPS	3	TORO/0700	TORO/1900	
ENG 6 ANGEL FIRE E-10286	09/08	ANDREW BERTGES	3	TORO/0700	TORO/1900	
CRW T2IA FORT APACHE #06 C-10116	09/08	AMEX TESSAY	21	TORO/0700	TORO/1900	
W/T T1 PVT FIRELINE E-10438	08/21	MATT MICHAELS	1	TORO/0700	TORO/1900	
ENG 3 CONCHO E-1458 E-10258	09/08	JD C OTTMAN	3	TORO/0700	TORO/1900	
TFLD (T) O-10471	09/03	AARON SCHUMACHER	1	TORO/0700	TORO/1900	
FEMP O-10364	09/05	JACOB CURRIE	1	TORO/0700	TORO/1900	
SOFR O-10221	09/01	BRIAN KEITH PISAREK	1	TORO/0700	TORO/1900	
SOF2 O-10558	09/04	BRUCE MALLOY	1	TORO/0700	TORO/1900	
6. Control Operations/Work Assignments:						
<p>TASK: Develop structure protection plan. PURPOSE: Ensure adequate resources and an appropriate strategy is identified to protect structures. END STATE: Resource and Equipment needs are identified and MAPs that allow for successful protection of values at risk.</p>						
7. Special Instructions:						
8. Division/Group Communication Summary						
Function	Channel	RX Frequency N/W	RX Tone/NAC	TX Frequency N/W	TX Tone/NAC	Mode
TACTICAL	10	154.2875N	156.7	154.2875N	156.7	A
MEDICAL	15	156.0750N	156.7	156.0750N	156.7	A
AIR TO GROUND	14	159.2700N	192.8	159.2700N	192.8	A
EMERGENCY	16	168.6250N		168.625N	110.9	A
9. Prepared By (Resource Unit Leader)			Approved By (Planning Section Chief)		Date	Time
JULIE VORACHEK			PETER BUTTERI		08/28/2016	2015

Division/Group Assignment List (ICS 204 WF)

1. Incident Name:			3.			
SOBERANES			III / IV	Division/Group: EAST STRUCTURE GRP		
2. Operational Period:						
Date/Time From:		Date/Time To:				
08/29/2016 0700	MON	08/30/2016 0700	TUE			
4. Operations Personnel						
OPERATIONS CHIEF	RUSS LONG		BRANCH DIRECTOR	DOUG DOWNS		
PLANNING OPERATIONS	JAYSON COIL KYLE COWAN (T)		DIVISION/GROUP SUPERVISOR	DANA BAGNOLI		
AIR ATTACK SUPERVISOR	RICH WEBSTER		SAFETY OFFICER	JACK WISE TRAVIS DOTSON (T)		
7. Special Instructions:						
<p>The Communications Plan is complex; please review the ICS 205 with all Division personnel. DIVS, TFL, and HEQB must account for & certify all hired equipment shift tickets during the operational period. Division Supervisors: Please report to Fire Apportionment to validate the previous day's ICS-204s. Use headlights. Slow down. Assume there is a vehicle around each corner.</p>						
8. Division/Group Communication Summary						
Function	Channel	RX Frequency N/W	RX Tone/NAC	TX Frequency N/W	TX Tone/NAC	Mode
TACTICAL	10	154.2875N	156.7	154.2875N	156.7	A
MEDICAL	15	156.0750N	156.7	156.0750N	156.7	A
AIR TO GROUND	14	159.2700N	192.8	159.2700N	192.8	A
EMERGENCY	16	168.6250N		168.625N	110.9	A
9. Prepared By (Resource Unit Leader)			Approved By (Planning Section Chief)		Date	Time
JULIE VORACHEK			PETER BUTTERI		08/28/2016	2015

Division/Group Assignment List (ICS 204 WF)

1. Incident Name:			3.			
SOBERANES			III/IV		M/AA/CC/EE	
2. Operational Period:						
Date/Time From: 08/29/2016 0700 MON		Date/Time To: 08/30/2016 0700 TUE				
4. Operations Personnel						
OPERATIONS CHIEF		RUSS LONG		BRANCH DIRECTOR		DOUG DOWNS
PLANNING OPERATIONS		JAYSON COIL KYLE COWAN (T)		DIVISION/GROUP SUPERVISOR		TOGIE WIEHL SETH ROSS (T)
AIR ATTACK SUPERVISOR		RICHARD WEBSTER		SAFETY OFFICER		JACK WISE TRAVIS DOTSON (T)
5. Resources Assigned this Period						
Strike Team / Task Force / Resource Designator		LWD	Leader	Number Persons	Drop Off PT./Time	Pick Up PT./Time
READ O-10532			JEFF KWASNY	1		
READ O-10448		09/10	BILL GOODMAN	1		
6. Control Operations/Work Assignments:						
Scout all division lines for burn-out opportunities.						
7. Special Instructions:						
*READS will report in and out to Branch Director III/IV when working in Divisions L and M.						
8. Division/Group Communication Summary						
Function	Channel	RX Frequency N/W	RX Tone/NAC	TX Frequency N/W	TX Tone/NAC	Mode
TACTICAL	6	154.4525N	156.7	154.4525N	156.7	A
MEDICAL	15	156.0750N	156.7	156.0750N	156.7	A
AIR TO GROUND	14	159.2700N	192.8	159.2700N	192.8	A
EMERGENCY	16	168.6250N		168.625N	110.9	A
9. Prepared By (Resource Unit Leader)			Approved By (Planning Section Chief)		Date	Time
JULIE VORACHEK			PETER BUTTERI		08/28/2016	2015

Division/Group Assignment List (ICS 204 WF)

1. Incident Name:		3.				
SOBERANES		III / IV		EAST FIRING GROUP		
2. Operational Period:						
Date/Time From: 08/29/2016 0700 MON	Date/Time To: 08/30/2016 0700 TUE					
4. Operations Personnel						
OPERATIONS CHIEF	RUSS LONG		BRANCH DIRECTOR	DOUG DOWNS		
PLANNING OPERATIONS	JAYSON COIL KYLE COWAN (T)		DIVISION/GROUP SUPERVISOR	DEREK PATTON		
AIR ATTACK SUPERVISOR	RICH WEBSTER		SAFETY OFFICER	JACK WISE TRAVIS DOTSON (T)		
5. Resources Assigned this Period						
Strike Team / Task Force / Resource Designator	LWD	Leader	Number Persons	Drop Off PT./Time	Pick Up PT./Time	
6. Control Operations/Work Assignments:						
<p>TASK: Coordinate with DIVS and Branch and develop a firing plan and associated strategy. PURPOSE: To ensure a safe, effective, and coordinated firing operation. END STATE: Firing operations contribute to holding the fire at designated control lines and threat to values at risk is eliminated.</p>						
7. Special Instructions:						
<p>The Communications Plan is complex; please review the ICS 205 with all Division personnel. DIVS, TFL, and HEQB must account for & certify all hired equipment shift tickets during the operational period. Division Supervisors: Please report to Fire Apportionment to validate the previous day's ICS-204s. Use headlights. Slow down. Assume there is a vehicle around each corner.</p>						
8. Division/Group Communication Summary						
Function	Channel	RX Frequency N/W	RX Tone/NAC	TX Frequency N/W	TX Tone/NAC	Mode
TACTICAL	11	151.2575N	192.8	151.2575N	192.8	A
MEDICAL	15	156.0750N	156.7	156.0750N	156.7	A
AIR TO GROUND	14	159.2700N	192.8	159.2700N	192.8	A
EMERGENCY	16	168.6250N		168.625N	110.9	A
9. Prepared By (Resource Unit Leader)			Approved By (Planning Section Chief)		Date	Time
JULIE VORACHEK			PETER BUTTERI		08/28/2016	2015

Division/Group Assignment List (ICS 204 WF)

1. Incident Name:			3.			
SOBERANES			V		GG	
2. Operational Period:						
Date/Time From: 08/29/2016 0700 MON		Date/Time To: 08/30/2016 0700 TUE				
4. Operations Personnel						
OPERATIONS CHIEF		RUSS LONG		BRANCH DIRECTOR		JEFF SCHARDT
PLANNING OPERATIONS		JAYSON COIL KYLE COWAN (T)		DIVISION/GROUP SUPERVISOR		JEFF STARK
AIR ATTACK SUPERVISOR		RICH WEBSTER		SAFETY OFFICER		JACK WISE TRAVIS DOTSON (T)
5. Resources Assigned this Period						
Strike Team / Task Force / Resource Designator		LWD	Leader	Number Persons	Drop Off PT./Time	Pick Up PT./Time
CRW T2 FORT APACHE #04 C-10151		09/01	BURNETTE BENNETT	21	LIGGETT/0700	LIGGETT/1900
CRW T2 ANF ROAD RUNNERS C-10111		09/07	STEVEN RUSHING	20	LIGGETT/0700	LIGGETT/1900
DOZ T2 LOUIS MOOSIOS DOZER E-221		09/07	LOUIS MOOSIOS	1	LIGGETT/0700	LIGGETT/1900
CHIP T1 GREENOUS E-10088			FRANK DROGOWSKI	1	LIGGETT/0700	LIGGETT/1900
CHIP TOUGH E-10089			JOSHUA ROBERTS	1	LIGGETT/0700	LIGGETT/1900
SKE T2 RIM ROCK E-10053		09/02	TROY RIGEL	3	LIGGETT/0700	LIGGETT/1900
SKE T2 LET ER BUCK E-10054			CLIFF ROWEN	1	LIGGETT/0700	LIGGETT/1900
MAS T2 NORTHSTATE E-10090		09/02	MAURICE RHODES	1	LIGGETT/0700	LIGGETT/1900
MAS T2 SWARTHOUT E-10094			JOSH SWARTHOUT	2	LIGGETT/0700	LIGGETT/1900
TFLD O-10348		09/05	JOSH OCONNOR	1	LIGGETT/0700	LIGGETT/1900
HEQB O-10403		09/07	JAMES MASHBURN	1	LIGGETT/0700	LIGGETT/1900
HEQB (T) O-10406		09/07	RICHARD M RAY	1	LIGGETT/0700	LIGGETT/1900
HEQB O-10352		09/05	PAUL LESLIE CATLETT	1	LIGGETT/0700	LIGGETT/1900
HEQB (T) O-10328		09/06	THOMAS F KROCK	1	LIGGETT/0700	LIGGETT/1900
EMTF O-1314		08/30	JON MILLER	1	LIGGETT/0700	LIGGETT/1900
EMTF O-1313		08/30	JOHN MURAOKA	1	LIGGETT/0700	LIGGETT/1900
EMTF O-10208		08/29	WILLIAM WALLS	1	LIGGETT/0700	LIGGETT/1900
EMPF O-1417			SPENCER JOHNSON	1	LIGGETT/0700	LIGGETT/1900
REM XST 2 O-1421		08/30	ERIC DEHART	2	LIGGETT/0700	LIGGETT/1900
8. Division/Group Communication Summary						
Function	Channel	RX Frequency N/W	RX Tone/NAC	TX Frequency N/W	TX Tone/NAC	Mode
TACTICAL	8	166.5500N		166.5500N		A
MEDICAL	15	156.0750N	156.7	156.0750N	156.7	A
AIR TO GROUND TAC	14	159.2700N	192.8	159.2700N	192.8	A
EMERGENCY	16	168.6250N		168.6250N	110.9	A
9. Prepared By (Resource Unit Leader)			Approved By (Planning Section Chief)		Date	Time
JODI RIST			PETER BUTTERI		08/28/2016	2015

Division/Group Assignment List (ICS 204 WF)

1. Incident Name:		3.				
SOBERANES		V		GG		
2. Operational Period:						
Date/Time From: 08/29/2016 0700	MON	Date/Time To: 08/30/2016 0700	TUE			
4. Operations Personnel						
OPERATIONS CHIEF	RUSS LONG		BRANCH DIRECTOR	JEFF SCHARDT		
PLANNING OPERATIONS	JAYSON COIL KYLE COWAN (T)		DIVISION/GROUP SUPERVISOR	JEFF STARK		
AIR ATTACK SUPERVISOR	RICH WEBSTER		SAFETY OFFICER	JACK WISE TRAVIS DOTSON (T)		
5. Resources Assigned this Period						
Strike Team / Task Force / Resource Designator	LWD	Leader	Number Persons	Drop Off PT./Time	Pick Up PT./Time	
SOF2 O-10557	09/01	LARRY CONNELL	1	LIGGETT/0700	LIGGETT/1900	
6. Control Operations/Work Assignments:						
<p>TASK: Complete indirect line construction. PURPOSE: To prevent fire growth east of control lines. END STATE: Indirect fireline is completed and will be adequate to provide for a high probability of success.</p> <p>TASK: Assess and complete structure protection at Arryo Seco. PURPOSE: To protect structures and infrastructure from the fire. END STATE: Hose lays are completed and will adequately provide protection of structures from the fire.</p> <p>TASK: Assess and implement the needs for structure protection of Fred's camp. PURPOSE: To protect structures and infrastructure at Fred's camp from the fire. END STATE: Provide adequate structure protection to structures and infrastructure in Fred's camp in the event the fire reaches the camp.</p>						
7. Special Instructions:						
<p>The Communications Plan is complex; please review the ICS 205 with all Division personnel. LOOK UP, Be Aware of Hazard Trees. DIVS, TFL, and HEQB must account for & certify all hired equipment shift tickets during the operational period. Division Supervisors: Please report to Fire Apportionment to validate the previous day's ICS-204s. Use headlights. Slow down. Assume there is a vehicle around each corner.</p>						
8. Division/Group Communication Summary						
Function	Channel	RX Frequency N/W	RX Tone/NAC	TX Frequency N/W	TX Tone/NAC	Mode
TACTICAL	8	166.5500N		166.5500N		A
MEDICAL	15	156.0750N	156.7	156.0750N	156.7	A
AIR TO GROUND TAC	14	159.2700N	192.8	159.2700N	192.8	A
EMERGENCY	16	168.6250N		168.6250N	110.9	A
9. Prepared By (Resource Unit Leader)			Approved By (Planning Section Chief)		Date	Time
JODI RIST			PETER BUTTERI		08/28/2016	2015

Division/Group Assignment List (ICS 204 WF)

1. Incident Name:			3.			
SOBERANES			Branch:		Division/Group:	
2. Operational Period:			V		II	
Date/Time From: 08/29/2016 0700 MON		Date/Time To: 08/30/2016 0700 TUE				
4. Operations Personnel						
OPERATIONS CHIEF		RUSS LONG		BRANCH DIRECTOR JEFFREY SCHARDT		
PLANNING OPERATIONS		JAYSON COIL KYLE COWAN (T)		DIVISION/GROUP SUPERVISOR CRAIG MARTIN		
AIR ATTACK SUPERVISOR		RICH WEBSTER		SAFETY OFFICER JACK WISE TRAVIS DOTSON		
5. Resources Assigned this Period						
Strike Team / Task Force / Resource Designator		LWD	Leader	Number Persons	Drop Off PT./Time	Pick Up PT./Time
DIVS O-10350		09/05	JEREMY BRAND	1	DP 45/0700	DP 45/1900
DIVS (T) O-10567		09/11	JAMES THORNOCK	1	DP 45/0700	DP 45/1900
CRW T1 MRN TAMALPAIS C-10095		09/01	TIMOTHY WALSH	16	DP 45/0700	DP 45/1900
DOZ T2 VENTANA E-10321			BRYCE NASON		DP 45/0700	DP 45/1900
W/T T2 INF 21 E-10023			BRIAN PRICE	2	DP 45/0700	DP 45/1900
W/T T2 KRITZ E-10131		09/08	DAVID HARVEY	1	DP 45/0700	DP 45/1900
TFLD O-10324		09/05	DENNIS STERN	1	DP 45/0700	DP 45/1900
TFLD O-10349		09/05	CHRISTOPHER DUNN III	1	DP 45/0700	DP 45/1900
HEQB (T) O-10401		09/07	CHRISTOPHER HAINES	1	DP 45/0700	DP 45/1900
HEQB O-10409		09/07	LESLIE BLACKWELL	1	DP 45/0700	DP 45/1900
FOBS O-10332		08/30	BRUCE CANN	1	DP 45/0700	DP 45/1900
FOBS (T) O-10381		09/06	JOHN ASHCRAFT	1	DP 45/0700	DP 45/1900
FOBS (T) O-10487		09/09	CHRIS WILLIAMS	1	DP 45/0700	DP 45/1900
FOBS (T) O-10488		09/09	GREGORY SUSZEK	1	DP 45/0700	DP 45/1900
EMPF O-10414			ANTHONY RIVAS	1	DP 45/0700	DP 45/1900
EMPF O-10415			FABIAN URESTI	1	DP 45/0700	DP 45/1900
SOFR O-10182		08/29	FEDERICO HERNANDEZ	1	DP 45/0700	DP 45/1900
FOBS O-1112			JOHN CLARK	1	DP 45/0700	DP 45/1900
6. Control Operations/Work Assignments:						
8. Division/Group Communication Summary						
Function	Channel	RX Frequency N/W	RX Tone/NAC	TX Frequency N/W	TX Tone/NAC	Mode
TACTICAL	12	151.1375N	156.7	151.1375N	156.7	A
MEDICAL	15	156.0750N	156.7	156.0750N	156.7	A
AIR TO GROUND	14	159.2700N	192.8	159.2700N	192.8	A
EMERGENCY	16	168.6250N		168.6250N	110.9	A
9. Prepared By (Resource Unit Leader)			Approved By (Planning Section Chief)		Date	Time
JULIE VORACHEK			PETER BUTTERI		08/28/2016	2015

Division/Group Assignment List (ICS 204 WF)

1. Incident Name:		3.				
SOBERANES		Branch:	Division/Group:			
2. Operational Period:		V	II			
Date/Time From: 08/29/2016 0700	MON	Date/Time To: 08/30/2016 0700	TUE			
4. Operations Personnel						
OPERATIONS CHIEF	RUSS LONG	BRANCH DIRECTOR	JEFFREY SCHARDT			
PLANNING OPERATIONS	JAYSON COIL KYLE COWAN (T)	DIVISION/GROUP SUPERVISOR	CRAIG MARTIN			
AIR ATTACK SUPERVISOR	RICH WEBSTER	SAFETY OFFICER	JACK WISE TRAVIS DOTSON			
6. Control Operations/Work Assignments:						
<p>TASK: Complete structure protection hose lays at Memorial around private and government structures, have fire wrap available to wrap the historic Indian Guard Station, if needed.</p> <p>PURPOSE: To protect private structures and the historic Indian Guard Station in the event the fire escapes containment lines.</p> <p>END STATE: Hose lays with water sources are completed and will adequately provide protection of the structures in the event the fire reaches the area.</p> <p>TASK: Remove mastication debris around Escondido Camp Ground.</p> <p>PURPOSE: To protect camp ground from fire.</p> <p>END STATE: Mastication debris is removed from camp ground and will not present an additional hazard to facilities.</p>						
7. Special Instructions:						
<p>The Communications Plan is complex; please review the ICS 205 with all Division personnel.</p> <p>LOOK UP, Be Aware of Hazard Trees.</p> <p>DIVS, TFL, and HEQB must account for & certify all hired equipment shift tickets during the operational period.</p> <p>Division Supervisors: Please report to Fire Apportionment to validate the previous day's ICS-204s.</p> <p>Use headlights. Slow down. Assume there is a vehicle around each corner.</p>						
8. Division/Group Communication Summary						
Function	Channel	RX Frequency N/W	RX Tone/NAC	TX Frequency N/W	TX Tone/NAC	Mode
TACTICAL	12	151.1375N	156.7	151.1375N	156.7	A
MEDICAL	15	156.0750N	156.7	156.0750N	156.7	A
AIR TO GROUND	14	159.2700N	192.8	159.2700N	192.8	A
EMERGENCY	16	168.6250N		168.6250N	110.9	A
9. Prepared By (Resource Unit Leader)		Approved By (Planning Section Chief)		Date	Time	
JULIE VORACHEK		PETER BUTTERI		08/28/2016	2015	

Division/Group Assignment List (ICS 204 WF)

1. Incident Name:			3.			
SOBERANES			VII / VIII	Division/Group: BIG SUR STRUCTURE		
2. Operational Period:						
Date/Time From: 08/29/2016 0700	MON	Date/Time To: 08/30/2016 0700	TUE			
4. Operations Personnel						
OPERATIONS CHIEF	RUSS LONG		BRANCH DIRECTOR	RUSS COPP WILLIE BRANSON (T)		
PLANNING OPERATIONS	JAYSON COIL KYLE COWAN (T)		DIVISION/GROUP SUPERVISOR	GARY BAUMGARTNER		
AIR ATTACK SUPERVISOR	RICH WEBSTER					
5. Resources Assigned this Period						
Strike Team / Task Force / Resource Designator	LWD	Leader	Number Persons	Drop Off PT./Time	Pick Up PT./Time	
HC2 HOOPER BAY #1 C-10110	09/08	ALBERT SIMON	19	MOLERA/0700	MOLERA/0700	
HC2 KALTAG #1 C-10107	09/08	STANLEY DEMOSKI	20	MOLERA/0700	MOLERA/0700	
ENG3 NM SAN JUAN CNTY BRUSH 13 E-10241	09/03	AARION AUSTIN	3	MOLERA/0700	MOLERA/0700	
SOBERANES STRIKE TEAM #1	09/08	MAT MAYALL	1	MOLERA/0700	MOLERA/0700	
STEN	09/08	FRANK ZUPANCIC (T) O-10445	1	MOLERA/0700	MOLERA/0700	
ENG6 AZ STATE 363 E-10288	09/07	STEVE ESTELLE	4	MOLERA/0700	MOLERA/0700	
ENG6 AZ STATE E161 E-10289	09/07	STEVEN GRIEGO	3	MOLERA/0700	MOLERA/0700	
ENG6 PINO 1 E-10260	09/08	DARIN PINO	3	MOLERA/0700	MOLERA/0700	
ENG6 VERDE VALLEY F-366 E-10290	09/08	JOEL ROSENBERG	3	MOLERA/0700	MOLERA/0700	
ENG6 BLOOMFIELD BRUSH #1 E-10251	09/07	TRAVIS OLBERT	3	MOLERA/0700	MOLERA/0700	
SOBERANES STRIKE TEAM #2	08/08	BEN ROCHE 0-1477	1	MOLERA/0700	MOLERA/0700	
STEN	09/08	KURT WALKER (T) O-10436	1	MOLERA/0700	MOLERA/0700	
ENG6 YABOY 805 E-10250	09/08	BRETT BOWER	3	MOLERA/0700	MOLERA/0700	
ENG6 YABOY 707 E-10256	09/08	ROBERT MORRIS	3	MOLERA/0700	MOLERA/0700	
ENG6 RIO RANCHO BRUSH SS E-10285	09/07	SKIPPY SANDOVAL	3	MOLERA/0700	MOLERA/0700	
ENG6 SONOTA ELGIN E-825 E-10254	09/07	BRIAN JACKSON		MOLERA/0700	MOLERA/0700	
8. Division/Group Communication Summary						
Function	Channel	RX Frequency N/W	RX Tone/NAC	TX Frequency N/W	TX Tone/NAC	Mode
TACTICAL	10	151.1450N	192.8	151.1450N	192.8	A
MEDICAL	15	156.0750N	156.7	156.0750N	156.7	A
AIR TO GROUND TAC	14	159.2700N	192.8	159.2700N	192.8	A
EMERGENCY	16	168.6250N		168.6250N	110.9	A
9. Prepared By (Resource Unit Leader)			Approved By (Planning Section Chief)		Date	Time
JODI RIST			PETER BUTTERI		08/28/2016	2015

Division/Group Assignment List (ICS 204 WF)

1. Incident Name:			3.			
SOBERANES			VII / VIII		DIVISION/GROUP: BIG SUR STRUCTURE	
2. Operational Period:						
Date/Time From: 08/29/2016 0700 MON		Date/Time To: 08/30/2016 0700 TUE				
4. Operations Personnel						
OPERATIONS CHIEF		RUSS LONG		BRANCH DIRECTOR		RUSS COPP WILLIE BRANSON (T)
PLANNING OPERATIONS		JAYSON COIL KYLE COWAN (T)		DIVISION/GROUP SUPERVISOR		GARY BAUMGARTNER
AIR ATTACK SUPERVISOR		RICH WEBSTER				
5. Resources Assigned this Period						
Strike Team / Task Force / Resource Designator		LWD	Leader	Number Persons	Drop Off PT./Time	Pick Up PT./Time
ENG6 NOGALES SUBURBAN E-10247		09/09	OSCAR VERDUGO	3		
TFLD (T) O-10398		09/07	TUMASI ROSS	1	MOLERA/0700	MOLERA/0700
SOF2 O-10544		09/08	KIM LEMKE	1	MOLERA/0700	MOLERA/0700
SOF2 (T) O-10543		09/09	JEFF SMITH	1	MOLERA/0700	MOLERA/0700
STENO-10433		09/09	DAN WHITE	1	MOLERA/0700	MOLERA/1900
EMPF O-10362		09/05	DAVID B DURHAM	1	MOLERA/0700	MOLERA/1900
EMTF O-10504			DAVE JENSEN	1	MOLERA/0700	MOLERA/1900
6. Control Operations/Work Assignments:						
<p>TASK: Assess Partington Ridge community and other identified structures/subdivisions along Highway 1. PURPOSE: To protect all values at risk along the Highway 1 Corridor adjacent to the fire. END STATE: All structures were protected and no loss of infrastructure occurred.</p>						
7. Special Instructions:						
Use headlights. Slow down. Assume there is a vehicle around each corner.						
8. Division/Group Communication Summary						
Function	Channel	RX Frequency N/W	RX Tone/NAC	TX Frequency N/W	TX Tone/NAC	Mode
TACTICAL	10	151.1450N	192.8	151.1450N	192.8	A
MEDICAL	15	156.0750N	156.7	156.0750N	156.7	A
AIR TO GROUND TAC	14	159.2700N	192.8	159.2700N	192.8	A
EMERGENCY	16	168.6250N		168.6250N	110.9	A
9. Prepared By (Resource Unit Leader)			Approved By (Planning Section Chief)		Date	Time
JODI RIST			PETER BUTTERI		08/28/2016	2015

Division/Group Assignment List (ICS 204 WF)

1. Incident Name:			3.			
SOBERANES			VII / VIII	Division/Group: BIG SUR FIRING GROUP		
2. Operational Period:						
Date/Time From:	MON	Date/Time To:	TUE			
08/29/2016 0700		08/30/2016 0700				
4. Operations Personnel						
OPERATIONS CHIEF	RUSS LONG		BRANCH DIRECTOR	RUSS COPP WILLIE BRANSON (T)		
PLANNING OPERATIONS	JAYSON COIL KYLE COWAN (T)		DIVISION/GROUP SUPERVISOR	KURT LARUE		
AIR ATTACK SUPERVISOR	RICH WEBSTER					
5. Resources Assigned this Period						
Strike Team / Task Force / Resource Designator	LWD	Leader	Number Persons	Drop Off PT./Time	Pick Up PT./Time	
HC1 PALOMAR HOT SHOTS C-10119	09/09	JOSE ORTEGA	18	MOLERA/0700	MOLERA/1900	
6. Control Operations/Work Assignments:						
<p>TASK: Coordinate with divisions on developing firing plan and associated strategies. PURPOSE: To contain fire within control lines and protect infrastructure within fire area. END STATE: Firing operations were successful and all control lines held the fire.</p>						
7. Special Instructions:						
<p>The Communications Plan is complex; please review the ICS 205 with all Division personnel. DIVS, TFL, and HEQB must account for & certify all hired equipment shift tickets during the operational period. Division Supervisors: Please report to Fire Apportionment to validate the previous day's ICS-204s. Use headlights, slow down, assume there is a vehicle around each corner.</p>						
8. Division/Group Communication Summary						
Function	Channel	RX Frequency N/W	RX Tone/NAC	TX Frequency N/W	TX Tone/NAC	Mode
TACTICAL	11	151.2575N	192.8	151.2575N	192.8	A
MEDICAL	15	156.0750N	156.7	156.0750N	156.7	A
AIR TO GROUND	14	159.2700N	192.8	159.2700N	192.8	A
EMERGENCY	16	168.6250N		168.6250N	110.9	A
9. Prepared By (Resource Unit Leader)			Approved By (Planning Section Chief)		Date	Time
JULIE VORACHEK			PETER BUTTERI		08/28/2016	2015

Division/Group Assignment List (ICS 204 WF)

1. Incident Name:		3.				
SOBERANES		VII / VIII		MOLERA STAGING		
2. Operational Period:						
Date/Time From: 08/29/2016 0700 MON	Date/Time To: 08/30/2016 0700 TUE					
4. Operations Personnel						
OPERATIONS CHIEF	RUSS LONG	BRANCH DIRECTOR	RUSS COPP WILLIE BRANSON (T)			
PLANNING OPERATIONS	JAYSON COIL KYLE COWAN (T)	DIVISION/GROUP SUPERVISOR				
AIR ATTACK SUPERVISOR	RICH WEBSTER					
5. Resources Assigned this Period						
Strike Team / Task Force / Resource Designator	LWD	Leader	Number Persons	Drop Off PT./Time	Pick Up PT./Time	
6. Control Operations/Work Assignments:						
Add Resources as Needed.						
7. Special Instructions:						
Use headlights. Slow down. Assume there is a vehicle around each corner.						
8. Division/Group Communication Summary						
Function	Channel	RX Frequency N/W	RX Tone/NAC	TX Frequency N/W	TX Tone/NAC	Mode
TACTICAL	12	159.4725N	156.7	159.4725N	156.7	A
MEDICAL	15	156.0750N	156.7	156.0750N	156.7	A
AIR TO GROUND	14	159.2700N	192.8	159.2700N	192.8	A
EMERGENCY	16	168.6250N		168.625N	110.9	A
9. Prepared By (Resource Unit Leader)			Approved By (Planning Section Chief)		Date	Time
JODI RIST			PETER BUTTERI		08/28/2016	2015

Division/Group Assignment List (ICS 204 WF)

1. Incident Name:			3.			
SOBERANES			Branch:		Division/Group:	
2. Operational Period:			VII & VIII		O/P	
Date/Time From: 08/29/2016 0700 MON	Date/Time To: 08/30/2016 0700 TUE					
4. Operations Personnel						
OPERATIONS CHIEF		RUSS LONG		BRANCH DIRECTOR		
				RUSSELL COPP WILLIE BRANSON (T)		
PLANNING OPERATIONS		JAYSON COIL KYLE COWAN (T)		DIVISION/GROUP SUPERVISOR		
				EZRA STILES		
AIR ATTACK SUPERVISOR		RICH WEBSTER				
5. Resources Assigned this Period						
Strike Team / Task Force / Resource Designator		LWD	Leader	Number Persons	Drop Off PT./Time	Pick Up PT./Time
ENG T3 SNF 341 E-10238		09/06	CARLOS CABANAS	5	MOLERA /0700	MOLERA /1900
W/T TACTICAL T2 CNF 245 E-10199		09/03	NORMAN ODORICO	2	MOLERA /0700	MOLERA /1900
TFLD O-10355		09/05	BRIAN ROBINSON	1	MOLERA /0700	MOLERA /1900
SOF2 O-10183		08/30	ROBERT MARTIN JR	1	MOLERA/0700	MOLERA/1900
6. Control Operations/Work Assignments:						
<p>TASK: Continue to monitor and secure suppression efforts. PURPOSE: Contain fire activity along control lines, protecting structures and values at risk along Highway 1 and the Big Sur community. END STATE: All control lines successfully held fire with no infrastructure damage.</p>						
7. Special Instructions:						
<p>Look UP, be aware of hazard trees. Back haul excess equipment and trash. Use human repeaters for communications. Fire Plans: Ensure all line personnel in the division are notified and that the Go No Go checklist is utilized. The Communications plan is complex. Please review the ICS 205 with all Division personnel. DIVS, TFL and HEQB must account for & certify all hired equipment shift tickets during the operational period. Division Supervisors: Please report to Fire Apportionment to validate the previous day's ICS-204s. Use headlights. Slow down. Assume there is a vehicle around each corner.</p>						
8. Division/Group Communication Summary						
Function	Channel	RX Frequency N/W	RX Tone/NAC	TX Frequency N/W	TX Tone/NAC	Mode
TACTICAL	8	168.0500N		168.0500N		A
MEDICAL	15	156.0750N	156.7	156.0750N	156.7	A
AIR TO GROUND	14	159.2700N	192.8	159.2700N	192.8	A
EMERGENCY	16	168.6250N		168.6250N	110.9	A
9. Prepared By (Resource Unit Leader)			Approved By (Planning Section Chief)		Date	Time
JODI RIST			PETER BUTTERI		08/28/2016	2015

Division/Group Assignment List (ICS 204 WF)

1. Incident Name:			3.			
SOBERANES			VII & VIII		UU	
2. Operational Period:						
Date/Time From: 08/29/2016 0700 MON		Date/Time To: 08/30/2016 0700 TUE				
4. Operations Personnel						
OPERATIONS CHIEF		RUSS LONG		BRANCH DIRECTOR		RUSSELL COPP WILLIE BRANSON (T)
PLANNING OPERATIONS		JAYSON COIL KYLE COWAN (T)		DIVISION/GROUP SUPERVISOR		MARK JOHNSON JOHNNY VILLA (T)
AIR ATTACK SUPERVISOR		RICH WEBSTER				
5. Resources Assigned this Period						
Strike Team / Task Force / Resource Designator		LWD	Leader	Number Persons	Drop Off PT./Time	Pick Up PT./Time
ENG T6 OVD 3141 E-10036			CRAIG BUNCE	3	MOLERA/0700	MOLERA /1900
W/T T1 FIRELINE ROUGH E-611		09/05	CHARLES KELLEY	1	MOLERA/0700	MOLERA /1900
W/T T1 FIRELINE ROUGH E-612		09/05	TERRY SULLIVAN	1	MOLERA/0700	MOLERA /1900
W/T T2 DOC'S E-10129			NATHAN DUNHAM	1	MOLERA/0700	MOLERA /1900
W/T T2 GOLDEN STATE E-492			RICHARD CARVALHO	1	MOLERA/0700	MOLERA/1900
W/T T2 JARDINE'S E-10068			PAUL HERMAN	1	MOLERA/0700	MOLERA /1900
MAS BORDGES TIMBER E-10395			CODY FIDLETON	1	MOLERA/0700	MOLERA/1900
MAS BORDGES TIMBER #2 E-10396			TIM BORDGES	1	MOLERA/0700	MOLERA/1900
MAS WINNINGHAM FOREST MGMT INC E-10305			SCOTT VELASCO	1	MOLERA/0700	MOLERA/1900
MAS WINNINGHAM FOREST MGMT INC E-10306			ADAM LUKE	1	MOLERA/0700	MOLERA/1900
HEQB O-10351		09/06	STEPHEN SMITH II	1	MOLERA/0700	MOLERA /1900
HEQB (T) O-10361		09/06	ROSALIO VASQUEZ	1	MOLERA/0700	MOLERA /1900
HEQB O-10407		09/07	GLEN RANKIN COLEY	1	MOLERA/0700	MOLERA /1900
HEQB (T) O-10400		09/07	DREW FORD	1	MOLERA/0700	MOLERA /1900
TFLD O-10326		09/06	SUNBEAR VIERRA	1	MOLERA/0700	MOLERA /1900
TFLD (T) O-10367		09/05	BRAD TAUSAN	1	MOLERA/0700	MOLERA /1900
SOFR O-1335		08/31	KEVIN MORRIS	1	MOLERA/0700	MOLERA /1900
FOBS O-1275			AARON GREGORY	1	MOLERA/0700	MOLERA /1900
FOBS O-139		09/02	MARK ENGLAND	1	MOLERA/0700	MOLERA /1900
8. Division/Group Communication Summary						
Function	Channel	RX Frequency N/W	RX Tone/NAC	TX Frequency N/W	TX Tone/NAC	Mode
TACTICAL	7	168.6000N		168.6000N		A
MEDICAL	15	156.0750N	156.7	156.0750N	156.7	A
AIR TO GROUND	14	159.2700N	192.8	159.2700N	192.8	A
EMERGENCY	16	168.6250N		168.6250N	110.9	A
9. Prepared By (Resource Unit Leader)			Approved By (Planning Section Chief)		Date	Time
JULIE VORACHEK			PETER BUTTERI		08/28/2016	2015

Division/Group Assignment List (ICS 204 WF)

1. Incident Name:			3.			
SOBERANES			VII & VIII		UU	
2. Operational Period:						
Date/Time From: 08/29/2016 0700 MON		Date/Time To: 08/30/2016 0700 TUE				
4. Operations Personnel						
OPERATIONS CHIEF		RUSS LONG		BRANCH DIRECTOR		RUSSELL COPP WILLIE BRANSON (T)
PLANNING OPERATIONS		JAYSON COIL KYLE COWAN (T)		DIVISION/GROUP SUPERVISOR		MARK JOHNSON JOHNNY VILLA (T)
AIR ATTACK SUPERVISOR		RICH WEBSTER				
5. Resources Assigned this Period						
Strike Team / Task Force / Resource Designator		LWD	Leader	Number Persons	Drop Off PT./Time	Pick Up PT./Time
FOBS O-10333		09/06	MICHAEL PETRUNCIO	1	MOLERA/0700	MOLERA /1900
EMPF O-10363		09/05	CHRISTOPHER GREGORY	1	MOLERA/0700	MOLERA /1900
EMPF VERGA O-10387		09/05	JUSTIN VERGA	1	MOLERA/0700	MOLERA /1900
EMPF KAY O-10388		09/05	NEVIN KAY	1	MOLERA/0700	MOLERA /1900
6. Control Operations/Work Assignments:						
<p>TASK: Scout and improve indirect line for firing operations. Prep structures within DIV UU.</p> <p>PURPOSE: Control fire activity along dozer lines, protect values at risk along Hwy 1.</p> <p>END STATE: Fire remains east of control lines in UU, is controlled, and no longer threatens structures or other values at risk along Hwy 1.</p>						
7. Special Instructions:						
<p>If ignition operations commence in DIV N, then DIV UU will not be staffed. If fire gets established in Pit Creek, DIV UU will not be staffed.</p> <p>The Communications Plan is complex; please review the ICS 205 with all Division personnel.</p> <p>Review and understand medical emergency evacuation plan.</p> <p>DIVS, TFL and HEQB must account for & certify all hired shift tickets during operational period.</p> <p>Springville to prepare to spike at H-16.</p> <p>Division Supervisors: Please report to Fire Apportionment to validate the previous day's ICS-204s.</p> <p>Use headlights. Slow down. Assume there is a vehicle around each corner.</p>						
8. Division/Group Communication Summary						
Function	Channel	RX Frequency N/W	RX Tone/NAC	TX Frequency N/W	TX Tone/NAC	Mode
TACTICAL	7	168.6000N		168.6000N		A
MEDICAL	15	156.0750N	156.7	156.0750N	156.7	A
AIR TO GROUND	14	159.2700N	192.8	159.2700N	192.8	A
EMERGENCY	16	168.6250N		168.6250N	110.9	A
9. Prepared By (Resource Unit Leader)			Approved By (Planning Section Chief)		Date	Time
JULIE VORACHEK			PETER BUTTERI		08/28/2016	2015

Division/Group Assignment List (ICS 204 WF)

1. Incident Name:				3.			
SOBERANES				VII & VIII		N	
2. Operational Period:							
Date/Time From: 08/29/2016 0700 MON		Date/Time To: 08/30/2016 0700 TUE					
4. Operations Personnel							
OPERATIONS CHIEF		RUSS LONG		BRANCH DIRECTOR		RUSS COPP WILLIE BRANSON (T)	
PLANNING OPERATIONS		JAYSON COIL KYLE COWAN (T)		DIVISION/GROUP SUPERVISOR		PATRICK MOORE BILLY MCCALL (T)	
AIR ATTACK SUPERVISOR		RICH WEBSTER					
5. Resources Assigned this Period							
Strike Team / Task Force / Resource Designator		LWD	Leader	Number Persons	Drop Off PT./Time	Pick Up PT./Time	
HC2I CRW T2IA KNF SALMON RIVER 4 C-10059		09/01	WILLIAM M ROBINSON	19	MOLERA /0700	MOLERA/1900	
CRW T2IA LOST RIVER C-10114		09/01	DAVID DELANEY	20	MOLERA /0700	MOLERA/1900	
CRW T2 PVT MP FORESTRY C-10091		08/31	ENRIQUE MORENO	20	MOLERA /0700	MOLERA/1900	
CRW T2 PVT TORRES C-10034			MARCO MARTINEZ	20	MOLERA /0700	MOLERA/1900	
ENG S/T T3 1617C E-10266		09/06	LUIS DOZAL	15	MOLERA /0700	MOLERA/1900	
ENG T6 AZKNF 611 E-10076		09/04	ARIC RASMUSSEN	4	MOLERA /0700	MOLERA/1900	
DOZ T2 PVT HERTZIG E-215			JOHN HERZIG	2	MOLERA /0700	MOLERA/1900	
W/T T1 ALGERINE WEST E-164			MONTE WEST	2	MOLERA /0700	MOLERA/1900	
W/T T2 PVT WATERBOYS E-1084			RONALD BELION	1	MOLERA /0700	MOLERA/1900	
W/T T2 PVT JARDINE'S E-10092			MIKE JARDINE	1	MOLERA /0700	MOLERA/1900	
W/T T2 PVT CUTTING E-1087		09/07	ED JONES	1	MOLERA /0700	MOLERA/1900	
W/T T2 PVT BAY AREA E-10127			ANGEL JONES	1	MOLERA /0700	MOLERA/1900	
W/T T2 PVT BENNETT E-10130			JONATHON ZAVALA	1	MOLERA /0700	MOLERA/1900	
GRD PVT ROEN E-496			MIKE RYAN	1	MOLERA /0700	MOLERA/1900	
HEQB O-10373		09/07	TANNER GREENE	1	MOLERA /0700	MOLERA/1900	
HEQB (T) O-10402		09/07	CODY SMALLWOOD	1	MOLERA /0700	MOLERA/1900	
HEQB O-10372		09/07	MICHAEL FRANK	1	MOLERA /0700	MOLERA/1900	
HEQB (T) O-10399		09/07	RANDALL BAREFOOT	1	MOLERA /0700	MOLERA/1900	
REAF O-10311		09/04	ANNA COURTNEY	1	MOLERA /0700	MOLERA/1900	
8. Division/Group Communication Summary							
Function	Channel	RX Frequency N/W	RX Tone/NAC	TX Frequency N/W	TX Tone/NAC	Mode	
TACTICAL	6	168.2000N		168.2000N		A	
MEDICAL	15	156.0750N	156.7	156.0750N	156.7	A	
AIR TO GROUND TAC	14	159.2700N	192.8	159.2700N	192.8	A	
EMERGENCY	16	168.6250N		168.6250N	110.9	A	
9. Prepared By (Resource Unit Leader)			Approved By (Planning Section Chief)			Date	Time
JODI RIST			PETER BUTTERI			08/28/2016	2015

Division/Group Assignment List (ICS 204 WF)

1. Incident Name:			3.			
SOBERANES			Branch:		Division/Group:	
2. Operational Period:			VII & VIII		N	
Date/Time From: 08/29/2016 0700	MON	Date/Time To: 08/30/2016 0700				
4. Operations Personnel						
OPERATIONS CHIEF		RUSS LONG		BRANCH DIRECTOR		RUSS COPP WILLIE BRANSON (T)
PLANNING OPERATIONS		JAYSON COIL KYLE COWAN (T)		DIVISION/GROUP SUPERVISOR		PATRICK MOORE BILLY MCCALL (T)
AIR ATTACK SUPERVISOR		RICH WEBSTER				
5. Resources Assigned this Period						
Strike Team / Task Force / Resource Designator		LWD	Leader	Number Persons	Drop Off PT./Time	Pick Up PT./Time
REAF O-10131		08/30	AUSTIN PARKER	1	MOLERA /0700	MOLERA/1900
ARCH O-10175		08/29	JASON NEZ	1	MOLERA /0700	MOLERA/1900
FFT1 O-10539		09/09	ALEX PEREZ	1	MOLERA /0700	MOLERA/1900
SOF2 O-10418		09/08	CHRISTOPHER FOGLE	1	MOLERA /0700	MOLERA/1900
SOFR O-10554		09/11	JAMIE RITTENHOUSE	1	MOLERA /0700	MOLERA/1900
SOFR (T) O-10184		08/30	STEWART ROBERTSON	1	MOLERA /0700	MOLERA/1900
SOFR (T) O-10468		09/08	KYLE OWEN	1	MOLERA /0700	MOLERA/1900
EMPF O-10207			DANIEL NUNEZ	1	MOLERA /0700	MOLERA/1900
EMPF O-1423			MICHAEL SGRO	1	MOLERA /0700	MOLERA/1900
EMPF O-10470		09/09	BOBBY WEIST	1	MOLERA /0700	MOLERA/1900
EMTF O-10450		09/07	JUSTIN SIMMONS	1	MOLERA /0700	MOLERA/1900
REMS XRI 1 O-1119		08/30	SCOTT WILSON	2	MOLERA /0700	MOLERA/1900
6. Control Operations/Work Assignments:						
<p>If fire becomes established west of the North Coast Ridge Road and can not be contained with resources on hand, an evacuation order for Partington Subdivision will be initiated.</p> <p>TASK: Scout and improve indirect line for firing operations. Optimize weather conditions to ensure successful firing operations. PURPOSE: Contain fire activity along control lines, protecting structures and values at risk along Highway 1. END STATE: All control lines successfully held fire with no infrastructure damage.</p>						
7. Special Instructions:						
8. Division/Group Communication Summary						
Function	Channel	RX Frequency N/W	RX Tone/NAC	TX Frequency N/W	TX Tone/NAC	Mode
TACTICAL	6	168.2000N		168.2000N		A
MEDICAL	15	156.0750N	156.7	156.0750N	156.7	A
AIR TO GROUND TAC	14	159.2700N	192.8	159.2700N	192.8	A
EMERGENCY	16	168.6250N		168.6250N	110.9	A
9. Prepared By (Resource Unit Leader)			Approved By (Planning Section Chief)		Date	Time
JODI RIST			PETER BUTTERI		08/28/2016	2015

Division/Group Assignment List (ICS 204 WF)

1. Incident Name:			3.			
SOBERANES			VII & VIII	Division/Group: N		
2. Operational Period:						
Date/Time From:	MON	Date/Time To:	TUE			
08/29/2016 0700		08/30/2016 0700				
4. Operations Personnel						
OPERATIONS CHIEF	RUSS LONG		BRANCH DIRECTOR	RUSS COPP WILLIE BRANSON (T)		
PLANNING OPERATIONS	JAYSON COIL KYLE COWAN (T)		DIVISION/GROUP SUPERVISOR	PATRICK MOORE BILLY MCCALL (T)		
AIR ATTACK SUPERVISOR	RICH WEBSTER					
7. Special Instructions:						
<p>Please keep all Dozer lines out of Highway 1 viewshed.</p> <p>The Communications Plan is complex; please review the ICS 205 with all Division personnel.</p> <p>Use headlights. Slow down. Assume there is a vehicle around each corner. Look up. Be aware of hazard trees.</p> <p>Review and understand medical emergency evacuation plan.</p> <p>DIVS, TFL and HEQB must account for & certify all hired equipment shift tickets during operational period.</p> <p>Division Supervisors: Please report to Fire Apportionment to validate the previous day's ICS-204s.</p> <p>Once ignition begins, only critical resources will be south along North Ridge Rd in front of the ignition group. If the main fire gets established on the south facing slope and Logwood drainage, only critical resources will be in unburned areas.</p>						
8. Division/Group Communication Summary						
Function	Channel	RX Frequency N/W	RX Tone/NAC	TX Frequency N/W	TX Tone/NAC	Mode
TACTICAL	6	168.2000N		168.2000N		A
MEDICAL	15	156.0750N	156.7	156.0750N	156.7	A
AIR TO GROUND TAC	14	159.2700N	192.8	159.2700N	192.8	A
EMERGENCY	16	168.6250N		168.6250N	110.9	A
9. Prepared By (Resource Unit Leader)			Approved By (Planning Section Chief)		Date	Time
JODI RIST			PETER BUTTERI		08/28/2016	2015

Division/Group Assignment List (ICS 204 WF)

1. Incident Name:			3.			
SOBERANES			Branch:		Division/Group: TORO IA/STAGING	
2. Operational Period:						
Date/Time From: 08/29/2016 0700 MON		Date/Time To: 08/30/2016 0700 TUE				
4. Operations Personnel						
OPERATIONS CHIEF		RUSS LONG		BRANCH DIRECTOR		
PLANNING OPERATIONS		JAYSON COIL KYLE COWAN (T)		DIVISION/GROUP SUPERVISOR		JAMES ROURKS JASON LAGO (T)
AIR ATTACK SUPERVISOR		RICH WEBSTER				
5. Resources Assigned this Period						
Strike Team / Task Force / Resource Designator		LWD	Leader	Number Persons	Drop Off PT./Time	Pick Up PT./Time
ENG6 MORA BRUSH #1 E-10245		09/09	MICHAEL LUJAN	3	TORO/0700	TORO/1900
WTS2 HOLT E-10161		09/10	GREG HOLT	1	TORO/0700	TORO/1900
WTS2 PETERSON FARMS E-10160			PETERSON	1	TORO/0700	TORO/1900
TASK FORCE #4			PATRICK WALKER O-1482	1	TORO/0700	TORO/1900
ENG3 THREE POINTS E-10275		09/09	WILLIAM BARBER	4	TORO/0700	TORO/1900
ENG 3 SUNDANCE E-10268		09/09	DAVID BUCKMASTER	3	TORO/0700	TORO/1900
ENG6 E-671		09/09	JAY RUDE	3	TORO/0700	TORO/1900
ENG3 CHRISTOPHER KOHZ E-10272		09/07	NICK SHILL	5	TORO/0700	TORO/1900
ENG 6 BRUSH 911 E-10287		09/08	JERRY MCGRAW	2	TORO/0700	TORO/1900
ENG6 DOUBLE D FIRE E-10252		09/08	DUANE DEARBORN	3	TORO/0700	TORO/1900
TASK FORCE #5		09/09	LAN HECIMOVICH (T) O-10435	1	TORO/0700	TORO/1900
ENG6 EAGER 1660 E-10249		09/09	FRANK ADAMS	3	TORO/0700	TORO/1900
ENG6 J3 ENG#8 E-10283		09/08	DARREN NAMINJHA	3	TORO/0700	TORO/1900
ENG6 SOUTHERN ROCKY 139 E-10255		09/09	TOMMY DIAZ	4	TORO/0700	TORO/1900
ENG SOUTHERN ROCKY137 E-10259		09/09	TIM LATHAN	3	TORO/0700	TORO/1900
STEN O-1478		09/09	ALAN HUSKINS	1	TORO/0700	TORO/1900
8. Division/Group Communication Summary						
Function	Channel	RX Frequency N/W	RX Tone/NAC	TX Frequency N/W	TX Tone/NAC	Mode
TACTICAL	7	168.2500N		168.2500N		A
MEDICAL	15	156.0750N	156.7	156.0750N	156.7	A
AIR TO GROUND	14	159.2700N	192.8	159.2700N	192.8	A
EMERGENCY	16	168.6250N		168.625N	110.9	A
9. Prepared By (Resource Unit Leader)			Approved By (Planning Section Chief)		Date	Time
JODI RIST			PETER BUTTERI		08/28/2016	2000

Division/Group Assignment List (ICS 204 WF)

1. Incident Name:			3.			
SOBERANES			Branch:		Division/Group: TORO IA/STAGING	
2. Operational Period:						
Date/Time From: 08/29/2016 0700 MON		Date/Time To: 08/30/2016 0700 TUE				
4. Operations Personnel						
OPERATIONS CHIEF		RUSS LONG		BRANCH DIRECTOR		
PLANNING OPERATIONS		JAYSON COIL KYLE COWAN (T)		DIVISION/GROUP SUPERVISOR		JAMES ROURKS JASON LAGO (T)
AIR ATTACK SUPERVISOR		RICH WEBSTER				
5. Resources Assigned this Period						
Strike Team / Task Force / Resource Designator		LWD	Leader	Number Persons	Drop Off PT./Time	Pick Up PT./Time
W/T T2 PVT 49ER E-537			DICK SASSER	2	TORO/0700	TORO/1900
TFD (T) O-10408		09/10	REID MARQUART	1	TORO/0700	TORO/1900
STEN O-10434		09/09	DWAYNE JOHNSON	1	TORO/0700	TORO/1900
STEN O-10432		09/10	WILL HILL	1	TORO/0700	TORO/1900
STEN O-10430		09/07	TIM CARPENTER	1	TORO/0700	TORO/1900
STEN (T) O-10480		09/09	ART HATFIELD	1	TORO/0700	TORO/1900
6. Control Operations/Work Assignments:						
7. Special Instructions:						
STEN and TFLD be sure to have positive communications with your assigned resources. Use headlights. Slow down. Assume there is a vehicle around each corner.						
8. Division/Group Communication Summary						
Function	Channel	RX Frequency N/W	RX Tone/NAC	TX Frequency N/W	TX Tone/NAC	Mode
TACTICAL	7	168.2500N		168.2500N		A
MEDICAL	15	156.0750N	156.7	156.0750N	156.7	A
AIR TO GROUND	14	159.2700N	192.8	159.2700N	192.8	A
EMERGENCY	16	168.6250N		168.625N	110.9	A
9. Prepared By (Resource Unit Leader)			Approved By (Planning Section Chief)		Date	Time
JODI RIST			PETER BUTTERI		08/28/2016	2000

Division/Group Assignment List (ICS 204 WF)

1. Incident Name:			3.			
SOBERANES			NIGHT		N/O/P	
2. Operational Period:						
Date/Time From: 08/29/2016 0700 MON		Date/Time To: 08/30/2016 0700 TUE				
4. Operations Personnel						
OPERATIONS CHIEF		RUSS LONG		BRANCH DIRECTOR		ROBERT BERTOLINA
PLANNING OPERATIONS		JAYSON COIL KYLE COWAN (T)		DIVISION/GROUP SUPERVISOR		BRIAN PONTES
AIR ATTACK SUPERVISOR		RICH WEBSTER				
5. Resources Assigned this Period						
Strike Team / Task Force / Resource Designator		LWD	Leader	Number Persons	Drop Off PT./Time	Pick Up PT./Time
HC T2IA MS STATE #1 C-10092		09/05	PATRICK WILLIAMS	20	MOLERA/1900	MOLERA/0700
CRW T2 DESCANSO #5 C-10150		08/29	CHRIS GREEN	19	MOLERA/1900	MOLERA/0700
STC LPF1658 C E-10125			THOMAS STARVISH	27	MOLERA/1900	MOLERA/0700
ENG3 E-327 E-10243		08/29	RAUL ORTIZ	4	MOLERA/1900	MOLERA/0700
ENG3 AZ E-41 E-10242		09/02	ERNESTO MANZANEDO	3	MOLERA/1900	MOLERA/0700
ENG3 E-26 E-10239		09/07	ARLANDO LEYVA	4	MOLERA/1900	MOLERA/0700
ENG3 - ANF 14 E-10267		09/07	EDUARDO CHACON	5	MOLERA/1900	MOLERA/0700
ENG3 AFD E317 E-10240		09/01	CHRISTIAN MEE	4	MOLERA/1900	MOLERA/0700
ENG3 CA-CNF 331 E-10244		08/31	DAVID ESPINOZA	5	MOLERA/1900	MOLERA/0700
ENG3 CA-STF 342 E-10236		09/08	MICHAEL SCHEU	5	MOLERA/1900	MOLERA/0700
ENG3 CA-STF 344 E-10237		09/08	JUSTIN NASH	5	MOLERA/1900	MOLERA/0700
ENG3 AZ-SUM UNIT 24 E-10271		09/08	PRESTON SLAYTON	3	MOLERA/1900	MOLERA/0700
ENG6 AZ-GAD BR-241 E-10264		09/08	JEFF TODD	3	MOLERA/1900	MOLERA/0700
WTT2 CA-SQF 2 E-10198		09/03	JOSE ANDRADE	2	MOLERA/1900	MOLERA/0700
EMPF O-1420		09/03	LORI E EINEM	1	MOLERA/1900	MOLERA/0700
EMPF O-10447		09/07	JUSTIN REYES	1	MOLERA/1900	MOLERA/0700
6. Control Operations/Work Assignments:						
TASK: Monitor fire activity in assigned area.						
PURPOSE: To ensure adequate resources are allocated to protect values at risk.						
END STATE: Changes in fire location and potential are identified and communicated.						
8. Division/Group Communication Summary						
Function	Channel	RX Frequency N/W	RX Tone/NAC	TX Frequency N/W	TX Tone/NAC	Mode
TACTICAL	8	168.0500N		168.0500N		A
MEDICAL	15	156.0750N	156.7	156.0750N	156.7	A
AIR TO GROUND	14	159.2700N	192.8	159.2700N	192.8	A
EMERGENCY	16	168.6250N		168.625N	110.9	A
9. Prepared By (Resource Unit Leader)			Approved By (Planning Section Chief)		Date	Time
JODI RIST			PETER BUTTERI		08/28/2016	2000

Division/Group Assignment List (ICS 204 WF)

1. Incident Name:			3.			
SOBERANES			NIGHT	Division/Group: N/O/P		
2. Operational Period:						
Date/Time From:	MON	Date/Time To:	TUE			
08/29/2016 0700		08/30/2016 0700				
4. Operations Personnel						
OPERATIONS CHIEF	RUSS LONG		BRANCH DIRECTOR	ROBERT BERTOLINA		
PLANNING OPERATIONS	JAYSON COIL KYLE COWAN (T)		DIVISION/GROUP SUPERVISOR	BRIAN PONTES		
AIR ATTACK SUPERVISOR	RICH WEBSTER					
6. Control Operations/Work Assignments:						
7. Special Instructions: Please keep all Dozer lines out of Highway 1 viewshed. Use headlights. Slow down. Assume there is a vehicle around each corner. LOOK UP, be aware of hazard trees. Fire Plans: Ensure all line personnel in the division are notified and that the GO No GO checklist is utilized. The Communications Plan is complex. Please review the ICS 205 with all Division personnel. DIVS, TFLD, and HEQB must account for & certify all hired equipment shift tickets during the operational period. Please follow medical plan for medical emergencies. H-407 is available for night hoist operations. Division Supervisors: Please report to Fire Apportionment to validate the previous day's ICS-204s. At 0001 hrs. all Divisions will contact DIVS N/O/P Murrin for any Branch needs.						
8. Division/Group Communication Summary						
Function	Channel	RX Frequency N/W	RX Tone/NAC	TX Frequency N/W	TX Tone/NAC	Mode
TACTICAL	8	168.0500N		168.0500N		A
MEDICAL	15	156.0750N	156.7	156.0750N	156.7	A
AIR TO GROUND	14	159.2700N	192.8	159.2700N	192.8	A
EMERGENCY	16	168.6250N		168.625N	110.9	A
9. Prepared By (Resource Unit Leader)			Approved By (Planning Section Chief)		Date	Time
JODI RIST			PETER BUTTERI		08/28/2016	2000

INCIDENT RADIO COMMUNICATIONS PLAN		Incident Name			Date/Time Prepared			Operational Period Date/Time			
SUPPRESSION REPAIR (DPH RADIO GRP 15)		8/28/16 1900HRS.			8/29-30/16 0700 - 0700						
Ch #	Function	Channel Name/Trunked Radio System Talkgroup	Assignment	RX Freq N or W	RX Tone/NAC	TX Freq N or W	TX Tone/NAC	Mode A, D or M			
1	COMMAND	NIFC C4	ALL DIVISIONS	166.6125N		168.4000N	136.5	A	REPEATERS IN SUPP		
2	COMMAND	NIFC C11	ALL DIVISIONS	170.6875N		166.5750N	136.5	A	REPAIR LINKED		
3	COMMAND	NIFC C21							(C21 Repeater removed)		
4											
5											
6	TACTICAL	VFIRE 24	SUPP RPR 1	154.2725N	156.7	154.2725N	156.7	A			
7	TACTICAL	VFIRE 25		154.2875N	156.7	154.2875N	156.7	A			
8	TACTICAL	VFIRE 26	SUPP RPR 6	154.3025N	156.7	154.3025N	156.7	A			
9	TACTICAL	NIFC T5		166.7250N		166.7250N		A			
10											
11											
12	TACTICAL	VTAC 14	STAGING	159.4725N	156.7	159.4725N	156.7	A	ORD STAGING		
13	A/G CMD	A/G CMD	ALL DIVISIONS	159.4500N	192.8	159.4500N	192.8	A			
14	A/G TAC	A/G TAC	ALL DIVISIONS	159.2700N	192.8	159.2700N	192.8	A			
15	MEDICAL	CALCORD	ALL DIVISIONS	156.0750N	156.7	156.0750N	156.7	A	MEDICAL COORDINATION		
16	EMERGENCY	GUARD	ALL DIVISIONS	168.6250N		168.6250N	110.9	A	AIR GUARD		
17											
18											
19											
20	EMERGENCY	GUARD	ALL DIVISIONS	168.6250N		168.6250N	110.9	A	Clone Ver.GUARD21		
Prepared By (Communications Unit)		Lindsey Lien COML			Incident Location			5 MILES SOUTH OF CARMEL, GARRAPATA STATE PARK, MONTEREY CALIFORNIA			

Lindsey Lien COML

The convention calls for frequency lists to show four digits after the decimal place, followed by either an "N" or a "W", depending on whether the frequency is narrow or wide band. Mode refers to either "A" or "D" indicating analog or digital (e.g. Project 25) or "M" indicating mixed mode. All channels are shown as if programmed in a control station, mobile or portable radio. Repeater and base stations must be programmed with the KX and I X reversed.

INCIDENT RADIO COMMUNICATIONS PLAN		Incident Name BRANCHES III/IV & V (DHP radio Group 13)			Date/Time Prepared 8/28/16 1900HRS.	Operational Period Date/Time 8/29-30/16 0700 - 0700			
Ch #	Function	Channel Name/Trunked Radio System Talkgroup	Assignment	RX Freq N or W	RX Tone/NAC	TX Freq N or W	Tx Tone/NAC	Mode A, D or M	Remarks
1	COMMAND	NIFC C35	ALL DIVISIONS	172.5500N		164.8625N	136.5	A	ALL Repeaters Linked
2	COMMAND	NIFC C33	ALL DIVISIONS	167.1500N		172.1375N	136.5	A	in Branches III/IV & V
3	COMMAND	NIFC C37	ALL DIVISIONS	163.0750N		172.7500N	136.5	A	
4	COMMAND	NIFC C43		163.1750N		173.6750N	136.5	A	C43 Repeater Removed
5	COMMAND	NIFC C8	ALL DIVISIONS	169.5375N		164.7125N	136.5	A	
6	TACTICAL	VTAC 12	M/AA/CC/EE	154.4525N	156.7	154.4525N	156.7	A	
7	TACTICAL	NIFC T7	TORO IA, Staging	168.2500N		168.2500N		A	
8	TACTICAL	R5 T4	GG	166.5500N		166.5500N		A	
9	TACTICAL	R5 T6	FF	168.2375N		168.2375N		A	CONTINGENCY
10	TACTICAL	VFIRE 25	EAST STR GRP	154.2875N	156.7	154.2875N	156.7	A	
11	TACTICAL	CDF T1	EAST FIRING GRP	151.2575N	192.8	151.2575N	192.8	A	
12	TACTICAL	VTAC 11	J/K, II	151.1375N	156.7	151.1375N	156.7	A	
13	A/G CMD	A/G CMD	ALL DIVISIONS	159.4500N	192.8	159.4500N	192.8	A	
14	A/G TAC	A/G TAC	ALL DIVISIONS	159.2700N	192.8	159.2700N	192.8	A	
15	MEDICAL	CALCORD	ALL DIVISIONS	156.0750N	156.7	156.0750N	156.7	A	MEDICAL COORDINATION
16	EMERGENCY	GUARD	ALL DIVISIONS	168.6250N		168.6250N	110.9	A	AIR GUARD
17									
18									
19									
20	EMERGENCY	GUARD	ALL DIVISIONS	168.6250N		168.6250N	110.9	A	Clone Ver.GUARD21

Prepared By (Communications Unit)
Lindsey Lien COML *Lindsey Lien COML*

Incident Location
5 MILES SOUTH OF CARMEL, GARRAPATA STATE PARK, MONTEREY CALIFORNIA

The convention calls for frequency lists to show four digits after the decimal place, followed by either an "N" or a "W", depending on whether the frequency is narrow or wide band. Mode refers to either "A" or "D" indicating analog or digital (e.g. Project 25) or "M" indicating mixed mode. All channels are shown as if programmed in a control station, mobile or portable radio. Repeater and base stations must be programmed with the KX and IX reversed.

INCIDENT RADIO COMMUNICATIONS PLAN		Incident Name		Date/Time Prepared		Operational Period Date/Time			
BRANCH VI/VIII (DHP radio Group 14)		8/28/16 1900HRS.		8/29-30/16 0700 - 0700					
Ch #	Function	Channel Name/Trunked Radio System Talkgroup	Assignment	RX Freq N or W	RX Tone/NAC	TX Freq N or W	TX Tone/NAC	Mode A, D or M	Remarks
1	COMMAND	NIFC C10	ALL DIVISIONS	170.4125N		165.9625N	136.5	A	
2	COMMAND	NIFC C34	ALL DIVISIONS	170.0875N		162.1875N	136.5	A	C34 Back in Service
3	COMMAND	NIFC C40	ALL DIVISIONS	163.1500N		172.8125N	136.5	A	ALL REPEATERS LINKED
4	COMMAND	NIFC C38	ALL DIVISIONS	163.1250N		172.7750N	136.5	A	IN BRANCH VI/VIII
5	COMMAND	NIFC C21	ALL DIVISIONS	166.3125N		172.6750N	136.5	A	(C21 added repeater is already in clone)
6	TACTICAL	NIFC T2	N	168.2000N		168.2000N		A	
7	TACTICAL	NIFC T3	UU	168.6000N		168.6000N		A	
8	TACTICAL	NIFC T1	O/P	168.0500N		168.0500N		A	N/O/P NIGHT
9	TACTICAL	VFIRE 26		154.3025N	156.7	154.3025N	156.7	A	
10	TACTICAL	SPEC A	BIG SUR STR GRP	151.1450N	192.8	151.1450N	192.8	A	
11	TACTICAL	CDF T1	BIG SUR FIRING GRP	151.2575N	192.8	151.2575N	192.8	A	
12	TACTICAL	VTAC 14	MOLERA STG	159.4725N	156.7	159.4725N	156.7	A	North Coast Ridge Road Traffic Control
13	A/G CMD	A/G CMD	ALL DIVISIONS	159.4500N	192.8	159.4500N	192.8	A	
14	A/G TAC	A/G TAC	ALL DIVISIONS	159.2700N	192.8	159.2700N	192.8	A	
15	MEDICAL	CALCORD	ALL DIVISIONS	156.0750N	156.7	156.0750N	156.7	A	MEDICAL COORDINATION
16	EMERGENCY	GUARD	ALL DIVISIONS	168.6250N		168.6250N	110.9	A	AIR GUARD
17									
18									
19									
20	EMERGENCY	GUARD	ALL DIVISIONS	168.6250N		168.6250N	110.9	A	Clone Ver.GUARD21

Prepared By (Communications Unit)

Lindsey Lien COML

Lindsey Lien COML

Incident Location

5 MILES SOUTH OF CARMEL, GARRAPATA STATE PARK, MONTEREY CALIFORNIA

The convention calls for frequency lists to show four digits after the decimal place, followed by either an "N" or a "W", depending on whether the frequency is narrow or wide band. Mode refers to either "A" or "D" indicating analog or digital (e.g. Project 25) or "M" indicating mixed mode. All channels are shown as if programmed in a control station, mobile or portable radio. Repeater and base stations must be programmed with the KX and IX reversed.

Air Guard must be in the last channel of every plan (168.6250, PL 110.9 on TX only) Once 205 is complete, email it to com205@fire.ca.gov or fax to the local ECC and ask them to email it for you.

HEALTH AND SAFETY MESSAGE

SAFETY* starts with *YOU

We are **ALL** accountable for **SAFE** behaviors

INCIDENT: Soberanes

DATE: 8/29/16

Oper. Period: Day/Night

Major Hazards and Risks:

Driving: Keep your eyes on the road and your hands upon the wheel.

Weather Change: know what the weather is doing, be aware of forecasted change in winds

Change: be aware of possibilities for changing situations

Suppression actions need to be based on good anchor points, escape routes, and safety zones.

Remember LCES. Experienced lookouts are essential under these conditions.

Base all actions on current and expected behavior of the fire.

Watch Out Situation of the Day



**Look Up, Look Down,
Look Around**

***Look Up: Check the sky for any weather changes such as building or approaching thunderstorms, wind shifts or increasing in speed. Watch for air operations and water drops. Look for snags.**

***Look Down: Watch your footing. Keep an eye out for snakes, bees nests and observe fine fuels on the ground.**

*** Look Around Check fuel loading in the area, general terrain, current fire behavior and ladder fuels. Keep an eye on fellow firefighters for signs of heat stress and smoke inhalation.**

11.UNBURNED FUEL BETWEEN YOU AND THE FIRE

Incident Safety Officer: _AK IMT1 Safety Team



Human Resource Message

Fire Assignment Stressors

Environment: climate, altitude, air quality, noise levels and types, new fuel types and topography, different hazards such as bees, snakes, poison oaks, and bears.

People: different supervisor, different co-workers, changes in objectives, change in communications, working with contractors, working with other agencies, not always able to contact home

Physical: sleeping patterns and conditions, eating patterns, demands of the work schedule

Safety: crew awareness, communication of hazards, exposure to new fuel types and weather patterns, lack of access to equipment and resources when needed

S....STANDBACK: look at what's bothering you; take another approach;

T....TALK: about what is bothering you;

R....RELAX: take walks, deep breaths;

E....ESCAPE: take time off away from your co-workers if you can;

S....SCALE DOWN: reduce amounts of caffeine and energy drinks, nicotine, sugars;

S....SENSE OF HUMOR: Laughter is always the best medicine.

Incident Human Resource Specialist is: Andrea Cabida and Sue Warren

Location: Sue Warren ICP; Andrea Cabida Molera



FINANCE

Resources need to come to finance or call 520-780-8150

E-1089 Tough Co. Equipment

E-10265 Benson Fire

All American Tents

C-10034 Torres

Contractors, Inc

C-10091 MP Forestry

C-10114 Lost River

Legible

CTR's

Equals

Salary

08/29/2016

TENTATIVE RELEASE

SOBERANES US-CA-BEU-003422

CREWS

C-10152 0700 (HC2) MILLER TIMBER

EQUIPMENT

E-841 0630 (STK) STAKESIDE - ANDREW W. CLARK

OVERHEAD

O-10139	0600	(BCMG)	DICKERSON, MATTHEW L
O-10169	0600	(SOFR)	FORMAN, STEVE
O-10143	0600	(LSC2)	GADDIS, BRIAN L
O-10103	0600	(EQPM)	KNUTSON, STEVEN WALTER
O-1361	0600	(SECM)	LAPLANT, RALPH WILLIAM
O-10150	0600	(LOFR)	MCELROY, PATRICK J
O-10128	0600	(COST)	MONAHAN, TAMI LEE
O-1232	0600	(COMT)	SMITH, RICHARD W
O-1397	0700	(RESP)	BULLOCK, SCOTT
O-10219	0700	(MEDL)	CORMIER, STEVEN M
O-1413	0700	(SEC2)	MCCASKILL, DARROW

ALL PERSONNEL THAT FLEW TO THE SOBERANES INCIDENT VIA COMMERCIAL AIR NEED TO CONTACT THE DEMOB UNIT AND PROVIDE THE INFORMATION NEEDED TO SECURE A RETURN FLIGHT HOME. THIS INFORMATION IS NEEDED FOR ALL FLIERS AS SOON AS POSSIBLE AND IS REQUIRED AT LEAST 48 HOURS IN ADVANCE.

THE DEMOB UNIT IS LOCATED AT ICP. CONTACT INFORMATION IS:

PH: (831) 484-9725

Email: soberanesdemob@gmail.com

The trainee of today will train the future of tomorrow.

Take advantage now and do it right!



<https://goo.gl/QByKiA>

Trainees and Evaluators don't wait till the last minute. If you have not checked in or if you will be demobing in the next couple days, see the Training Specialist.

The Training Specialist is located at Toro ICP behind check-in.

If you can't make it to Toro ICP then utilize the QR code, URL or give us a call.

Training Specialist's

Greg White
(951) 288-6048

and

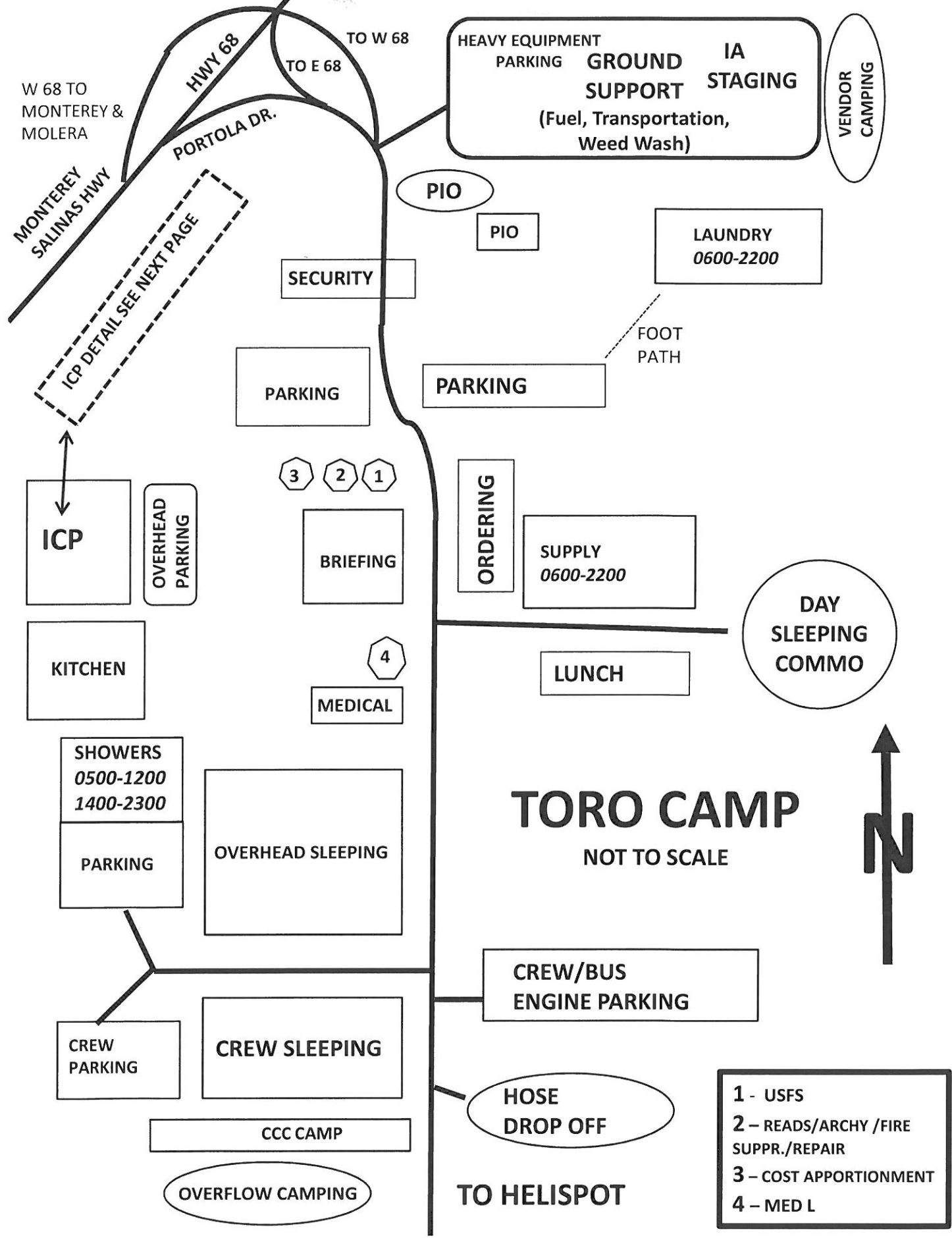
Dennis Martin
(707) 479-8421

Archaeological and Historical Sites
Fireline Guidance for the SOBERANES Incident

One of the values we protect on our National Forest is Heritage Resources, this includes the preservation of Historic sites, Archaeological sites, and sites with traditional or sacred values.

Known archaeological sites are flagged for avoidance with blue flagging tape and yellow and black stripe flagging tape together. Do not compromise safety for the protection and preservation of archaeological and historic sites. When feasible and prudent:

1. Be on the lookout for prehistoric and historic sites. Prehistoric archaeological sites include boulders and bedrock with mortars and cupules, holes and grinding surfaces, temporary camps containing scatters of stone flakes, and deposits of dark brown to blackish soil with shell fragments (midden) occurring in layers or mounds on flat surfaces near sources of water, along coastal areas and wetlands, along ridges and saddles, and other areas suitable for camping. Historic sites include old wooden cabins, barns, corrals and other buildings, rock foundations and historic artifact scatters. These kinds of resources are often found in the same kinds of environmental settings as prehistoric camp sites.
2. Some archaeological and historical sites have not been flagged yet. If you observe artifacts, features, or sites, attempt to avoid dozing or driving through and/or parking on these sites, if feasible, especially with heavy equipment. Some sites can be protected through avoidance, or by carefully removing flammable materials adjacent to sensitive features, or by wrapping with protective fireproof fabric.
3. If you can't avoid sites, minimize disturbance as much as feasible, only clearing the surface to as minimal a depth and width as necessary.
4. Leave all artifacts in place. Some artifacts may have been intentionally placed for religious or ceremonial reasons.
5. When a site is discovered, flag it for visibility and report its location to a Division Supervisor. If feasible, note locations of discovered resources on a map, and take a gps reading and photograph. Leave the information with an archaeologist (in the READ tent) so that sites can be relocated and protected during both the suppression and fire suppression repair phases of the Incident.
6. If you encounter a burial or human remains, cease work in the area immediately and contact the USFS Archaeologist. State law requires that the Archaeologist contact the Coroner, who will determine if the remains are part of a crime scene.



W 68 TO MONTEREY & MOLERA

MONTEREY SALINAS HWY

HWY 68

PORTOLA DR.

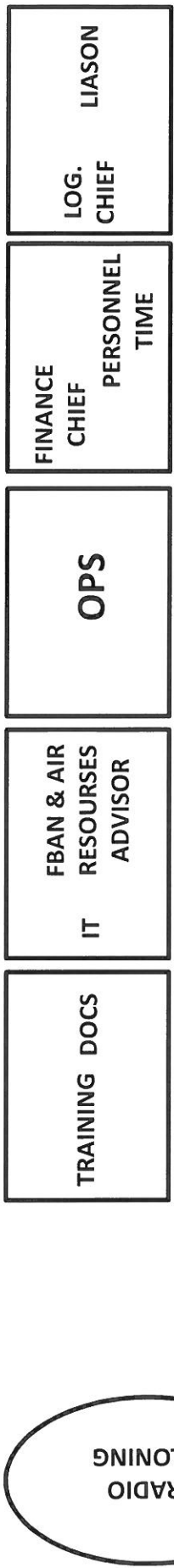
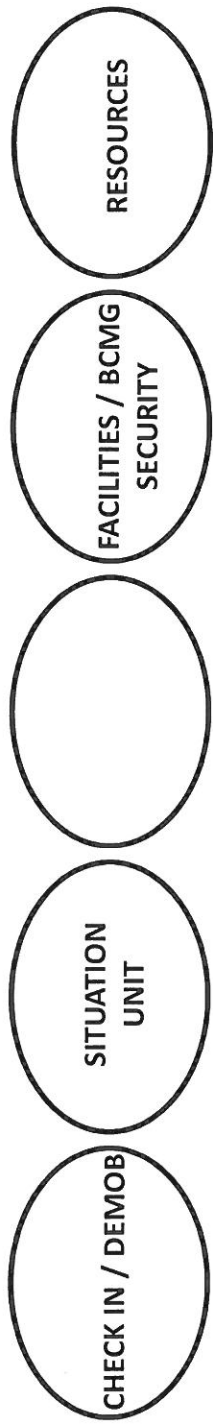
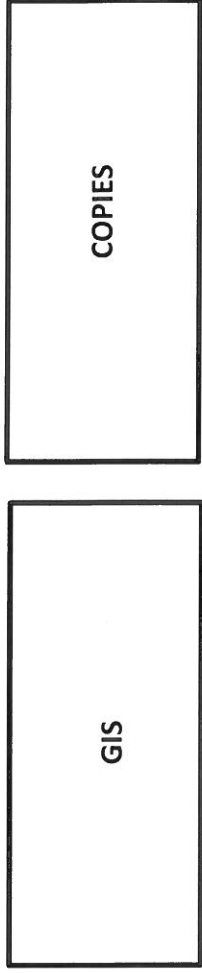
TO W 68
TO E 68

ICP DETAIL SEE NEXT PAGE

3 2 1

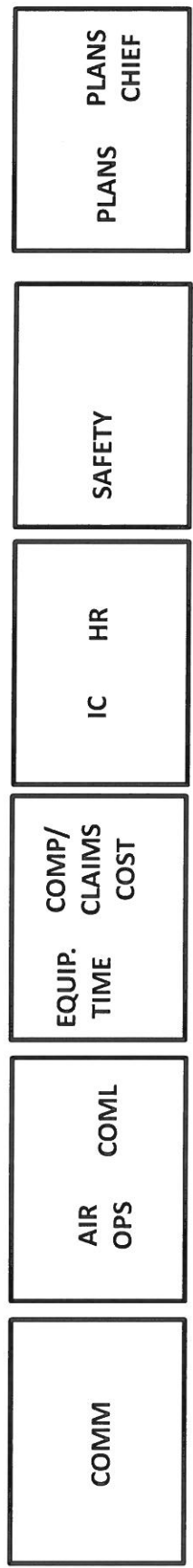
4





MAIN STREET

NOT TO SCALE

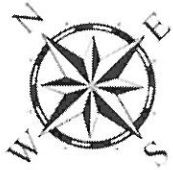


ICP MAP

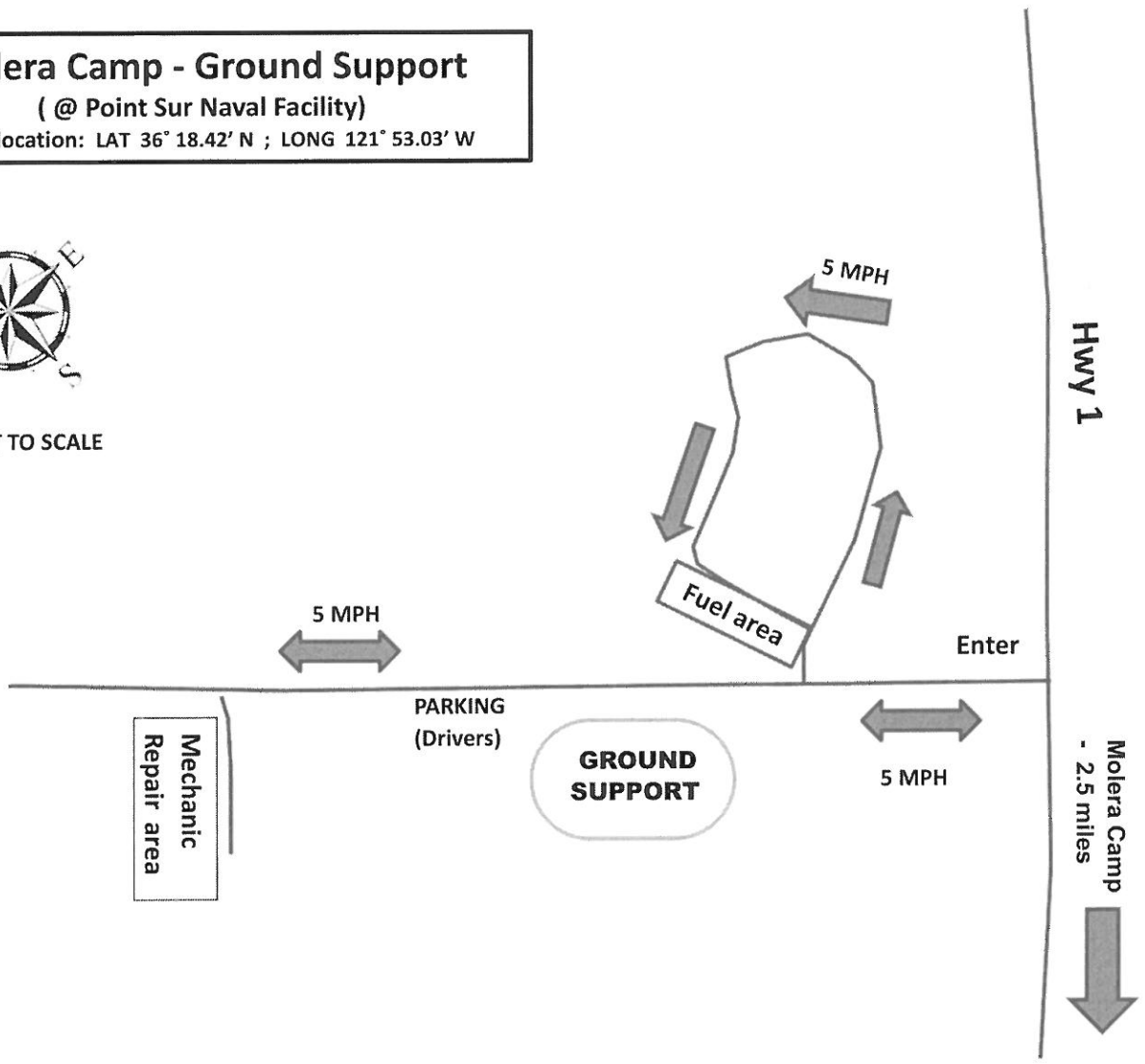
Molera Camp - Ground Support

(@ Point Sur Naval Facility)

Approx. location: LAT 36° 18.42' N ; LONG 121° 53.03' W



MAP NOT TO SCALE


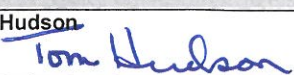


MEDICAL PLAN (ICS 206 WF)

1. Incident/Project Name		2. Operational Period							
Soberanes Incident		Date/Time 08-29-16 0700 to 8-30-16 0700							
3. Ambulance Services									
Name	Complete Address	Phone & EMS Frequency	Advanced Life Support (ALS) Yes No						
MCRFD M5563 **Incident Dedicated**	Rana Ranch Helibase 0700-1900	COMMAND	YES						
AMR M66 **Incident Dedicated**	Big Sur 0700-1900	COMMAND	YES						
AMR M24 / M35 / M36 **Non-dedicated**	Big Sur / Soledad / King City	9-1-1	YES						
FHL Fire Department **Non-dedicated**	Fort Hunter Liggett	9-1-1	YES						
4. Air Ambulance Services									
Name	Phone	Type of Aircraft & Capability							
KRN H407: Fort Hunter Liggett	COMMAND to Comm	NWG Hoist/Helo (ALS) 0700-2100							
CHP H70: Paso Robles CHP	COMMAND to Comm	NWG Hoist/Helo (ALS)							
5. Hospitals									
Name Complete Address	GPS Datum – WGS 84 Coordinate Standard Degrees Decimal Minutes DD° MM.MMM' N - Lat DD° MM.MMM' W - Long		Travel Time Air Gnd		Phone	Helipad Yes No		Level of Care Facility	
	Lat:	Long:				<input checked="" type="checkbox"/>	<input type="checkbox"/>		
Natividad Medical Center 1441 Constitution BLVD Salinas, CA 93906	N 36.41.850	5W 121.38.070			831 755-4111	<input checked="" type="checkbox"/>	<input type="checkbox"/>	Level 2 Trauma Center Destination for TRAUMA	
Santa Clara Valley MC 751 Bascom AVE San Jose, CA 95128	N 37.18.850	5W 121.56.050			408 885-5000	<input checked="" type="checkbox"/>	<input type="checkbox"/>	Level I Trauma Center Destination for BURNS	
CHOMP 23625 Holman Highway Monterey, CA 93942					831 624-5311	<input type="checkbox"/>	<input checked="" type="checkbox"/>	Destination for MEDICALS	
MEE Memorial Hospital 300 Canal ST King City, CA					831 385-6000	<input type="checkbox"/>	<input checked="" type="checkbox"/>	Destination for Camp Fort Hunter Liggett	
SPECIAL MEDICAL INSTRUCTIONS	Camp & ICP Medical Emergencies					FIRELINE Medical Emergencies			
	1. Call 9-1-1 2. Contact COMMUNICATIONS					1. On scene Point of Contact will initiate Medical Incident Report (9-line) with COMMS on COMMAND 2. Contact Division Supervisor			

MEDICAL PLAN (ICS 206 WF)

6. Division Branch	Group Area Location Capability
<h2 style="margin: 0;">See Daily IAP Division Assignment Sheets for Medical Unit personnel locations</h2>	
Left vacant for future use	
Left vacant for future use	
Left vacant for future use	

7. Name and Location	Camp Location(s)			
Toro – Frontline Medical Trailer	Point of contact	(530)375-7555		
	EMS Responders & Capability:	ALS		
	Equipment Available on Scene:	ALS		
Molera Medical Tent	Point of Contact:	Kay Brooks MEDL (850)259-0848 Elaine Fisher MEDL-t (407)453-0760		
	EMS Responders & Capability:	BLS		
	Equipment Available on Scene:	BLS		
Liggett Spike	Point of Contact	Line EMS in morning & night During day call 911 for Fort Hunter Fire Dept		
	EMS Responders & Capability	ALS		
	Equipment available on Scene	ALS		
ICP Medical Unit @ Toro	Point of Contact	Chuck Passek MEDL (907)382-5824 Eric Ulwelling MEDL-t (831)402-8957 Jesse Hernandez MEDL (520)560-2742 Dan Durham FEMP (916)505-3566		
	EMS responders & Capability	ALS		
	Equipment Available	ALS		
8.Prepared By (MEDL)		Date	Approved By (SOF1)	Date
Chuck Passek 		8/28/16	Tom Hudson 	8/28/16

MEDICAL PLAN (ICS 206 WF)

Medical Incident Report					
FOR ALL MEDICAL EMERGENCIES: IDENTIFY ON SCENE INCIDENT COMMANDER BY NAME AND POSITION AND ANNOUNCE "MEDICAL EMERGENCY" TO INITIATE RESPONSE FROM IMT COMMUNICATIONS/DISPATCH.					
Use items one through nine to communicate situation to communications/dispatch.					
1. CONTACT COMMUNICATIONS/DISPATCH <i>Ex: "Communications, Div. Alpha. Stand-by for Priority Medical Incident Report." (If life threatening request designated frequency be cleared for emergency traffic.)</i>					
2. INCIDENT STATUS: <i>Provide incident summary and command structure.</i>					
Nature of Injury/Illness			<i>Describe the injury (Ex: Broken leg with bleeding)</i>		
Incident Name			<i>Geographic Name + "Medical" (Ex: Trout Meadow Medical)</i>		
Incident Commander			<i>Name of IC</i>		
Patient Care			<i>Name of Care Provider (Ex: EMT Smith)</i>		
3. INITIAL PATIENT ASSESSMENT: <i>Complete this section for each patient. This is only a brief, initial assessment. Provide additional patient info after completing this 9 Line Report.</i>					
Number of Patients:	Male / Female	Age	Weight:		
Conscious? <input type="checkbox"/> YES <input type="checkbox"/> NO = MEDEVAC!					
Breathing? <input type="checkbox"/> YES <input type="checkbox"/> NO = MEDEVAC!					
Mechanism of Injury: <i>What caused the injury?</i>					
Lat/Long (Datum WGS84) <i>Ex: N 40° 42.45' x W 123° 03.24'</i>					
4. SEVERITY OF EMERGENCY, TRANSPORT PRIORITY					
SEVERITY			TRANSPORT PRIORITY		
<input type="checkbox"/> URGENT-RED Life threatening injury or illness. <i>Ex: Unconscious, difficulty breathing, bleeding severely, 2° – 3° burns more than 4 palm sizes, heat stroke, disoriented.</i>			Ambulance or MEDEVAC helicopter. Evacuation need is IMMEDIATE.		
<input type="checkbox"/> PRIORITY-YELLOW Serious Injury or illness. <i>Ex: Significant trauma, not able to walk, 2° – 3° burns not more than 1-2 palm sizes.</i>			Ambulance or consider air transport if at remote location. Evacuation may be DELAYED.		
<input type="checkbox"/> ROUTINE-GREEN Not a life threatening injury or illness. <i>Ex: Sprains, strains, minor heat-related illness.</i>			Non-Emergency. Evacuation considered Routine of Convenience.		
5. TRANSPORT PLAN:					
Air Transport: (Agency Aircraft Preferred)					
<input type="checkbox"/> Helispot		<input type="checkbox"/> Short-haul/Hoist		<input type="checkbox"/> Life Flight	<input type="checkbox"/> Other
Ground Transport: Click here to enter text.					
<input type="checkbox"/> Self-Extract		<input type="checkbox"/> Carry-Out		<input type="checkbox"/> Ambulance	<input type="checkbox"/> Other
6. ADDITIONAL RESOURCE/EQUIPMENT NEEDS:					
<input type="checkbox"/> Paramedic/EMT(s)		<input type="checkbox"/> Crew(s)		<input type="checkbox"/> SKED/Backboard/C-Collar	
<input type="checkbox"/> Burn Sheet(s)		<input type="checkbox"/> Oxygen		<input type="checkbox"/> Trauma Bag	
<input type="checkbox"/> Medication(s)		<input type="checkbox"/> IV/Fluid(s)		<input type="checkbox"/> Cardiac Monitor/AED	
<input type="checkbox"/> Other (i.e. splints, rope rescue, wheeled litter)					
7. COMMUNICATIONS:					
Function	Channel Name/Number	Receive (Rx)	Tone/NAC *	Transmit (Tx)	Tone/NAC *
<i>Ex: Command</i>	<i>Forest Rpt, Ch. 2</i>	<i>168.3250</i>	<i>110.9</i>	<i>171.4325</i>	<i>110.9</i>
COMMAND					
AIR-TO-GRND					
TACTICAL					
*(NAC for digital radio system)					
8. EVACUATION LOCATION:					
Lat/Long (Datum WGS84) <i>EX: N 40 42.45' x W 123 03.24'</i>					
Patient's ETA to Evacuation Location:					
Helispot/Extraction Size and Hazards:					
9. CONTINGENCY:					
Considerations: <i>If primary options fail, what actions can be implemented in conjunction with primary evacuation method? Be thinking ahead...</i>			REMEMBER: Confirm ETA's of resources ordered Act according to your level of training Be Alert. Keep Calm. Think Clearly. Act Decisively.		