



ALASKA

INCIDENT MANAGEMENT

T E A M

SOBERANES FIRE

CA-BEU-003422

PNKG7Z Override Code USFS 1502



OPERATIONAL PERIOD

Tuesday, AUGUST 30th 0700

to

Wednesday, AUGUST 31st 0700

Division Supervisors: Effective today, validate fire apportionment as follows:

Branch – I, II, VII, IX – Divisions call Dave Dukart at (805)698-2541 between 0830-1100.

Branch – III, IV, V – Divisions call Kris Armstrong at (661)342-7297 between 0830-1100.

INCIDENT OBJECTIVES1. Incident Name
Soberanes Fire2. Date Prepared
08/29/163. Time Prepared
1900

4. Operational Period – 08/30/2016 0700 TUES - to - 08/31/2016 0700 WED

Management Objectives:

- Provide for firefighter and public safety through the application of sound risk management analysis and the implementation of appropriate mitigations.
- Protect communities, infrastructure, utilities, improvements, historical assets, and the Ventana watershed.
- Ensure cost containment measures are identified and applied.
- Enhance community relations and political relationships through timely information exchange.
- Provide for initial attack assistance at the request of Monterey Ranger District of the Los Padres National Forest.
- Demonstrate principles of respect and dignity.

Control Objectives:

- Complete suppression repair activities at the north end of the fire in Branches I, II, and IX.
- Protect private property, surrounding communities, and values at risk by keeping the fire:
 - North of Nacimiento-Ferguson Road to limit fire growth toward values to the south.
 - West of Carmel Valley and Reliz Canyon to avoid impacts to the communities along the Highway 101 corridor and Fort Hunter Liggett Military Reservation.
 - East of Highway 1 to protect the visual corridor of this National Scenic Byway.
- When possible, minimize adverse effects to the Ventana Wilderness area by using minimum impact suppression tactics (MIST). Where opportunities exist, use natural features and preexisting containment lines. Consult with Resource Advisers to ensure tactics are compatible with social, economic, and environmental values.

Command Emphasis:

Protect values at risk by using a combination of direct and indirect tactics to suppress the fire. A key element of the strategy is to apply the right resources, to the right task, at the right time, for the right duration in order to achieve objectives with minimum firefighter exposure.

Situational Awareness:

Incident personnel understand daily operational direction for all phases of the incident. Personnel take responsibility for their own personal safety as well as the safety of others, and take corrective action where appropriate. Everyone assigned to the incident understands their roles and responsibilities within the incident medical plan and the incident emergency plan.

Stop, think, talk... then act in response to any situation that may represent unnecessary exposure.


9. Prepared By (Planning Section Chief)

Peter Butteri /s/

10. Approved By (Incident Commander)

Tony Doty /s/

ORGANIZATION ASSIGNMENT LIST	
1. Incident Name	
Soberanes Fire	
2. Date 08/29/2016	3. Time 2200
4. Operational Period 08/30/2016 0700 TUES to 08/31/2016 0700 WED	
5. Incident Commander and Staff	
Position	Name
Incident Commander	Tom Kurth / Norm McDonald ICT2(T)
Deputy	Tony Doty
Safety Officer	Tom Hudson / Greg Arkle(T) / David Stone / Tom Greiling
Information Officer	Pete Buist / Tim Mowry (T)
Human Resources	Andrea Cabida / Sue Warren
Liaison Officer	Warner McGrew, Jim Butler
6. Agency Representative	
Agency	Name
USFS Agency Admin	Bob Baird
CAL Fire Agency Admin	Brennan Blue
USFS Agency Admin Rep	Tim Short / Sue Exline
CAL OES	Ken Hood
MOCO OES	Dick Bower
Monterey PRPD	Caine Carmarillo / Joseph Narvaez
California Highway Patrol	Rob Kaczor
California State Parks	Sean James
Big Sur Fire Brigade	Martha Karstens / Frank Pinney
CA Conservation Corp	Amy Duncan
SACC	Tony Collins
7. Planning Section	
Position	Name
Chief	Ilene Wadkins / Peter Butteri / Harold West(T) / John Saddler [Molera](T)
Resources Unit	Jan Passek / Jodi Rist / Julie Vorachek(T) / Lawrence Crane(T) / Justin Query
Situation Unit	Kristi Bulock / Jim Silva / Mike Hill(T) / Scott Bliss [Molera](T)
Documentation	Joseph Blazek / KT Pyne(T)
Demobilization	Jim Cooley / Ed Paul / Don Watson
Fire Behavior Analyst	Robert Ziel / Robb Beery / Chris Moore(T)
Training Specialist	Greg White
GIS Specialist	Lasheena Nieves / Dan Labarre / Leah Jones(T)
Technology Support Specialist	Bill Beach / Hannah Semock(T)
IMET	Ryan Wallbrun / Brent Bowers(T)
Air Resource Advisor	Randy Striplin / Robert Elleman(T)
8. Logistic Section	
Position	Name
Chief	Jerri Webster / Janet Ladd [Molera] / Rusty Hippchen(T)
Supply Unit	John Hoch
Facilities Unit	Richard Bidasolo [Molera] / Bryan Seibold
Ground Support	Darren Rathbun
Communications	Lindsey Lien
Food Unit	Ed Haen
Medical	Chuck Passek / Eric Ulwelling(T)
Supply	Steve Streissguth
Security	Frank Antos / Bill Alexander [Molera]

9. Operations Section		
Day Ops Section Chief	Russ Long	
Night Ops Section Chief	Robert Bertolina	
Planning Ops	Jayson Coil / Kyle Cowan(T)	
Branch		I / II/ IX / Suppression Repair
Branch	Jonathan Pangburn	
Division	Supp 1	James McDaniel
Division	Supp 6	Stew McMorrow
Division	Baer	Brad Rust
Branch		III / IV
Branch	Doug Downs	
Division	J/K	Shane Martin
Division	M / AA / CC / EE	Togie Wiehl / Seth Ross(T)
Division	East Structure Group	Dana Bagnoli
Division	East Firing Group	
Branch		V
Branch	Jeff Schardt	
Division	GG	Jeffrey Stark / James Thorncock(T)
Division	II	Craig Martin
Branch		VII / VIII
Branch	Russ Copp / Willie Branson(T)	
Branch	Planning [Molera]	Branden Petersen / Matt Brown(T)
Division	Big Sur Structure Group	Gary Baumgartner
Division	Big Sur Firing Group	Kurt Larue
Division	Molera Staging	
Division	N	Patrick Moore / William McCall(T)
Division	O / P	
Division	SS	Ezra Stiles
Division	UU	Mark Johnson / Johnny Villa(T)
Branch		Night
Night Ops	Robert Bertolina	
Division	N / O / P	Brian Pontes
Branch		Toro IA
Division	James Rourks / Jason Lago(T)	
Air Operations Branch		
Air Ops Branch Director	Bruce Wicks	
Deputy Air Ops Branch Director	Ken Bingham	
Air Support Supervisor	Kevin Murray / Teresa Williamson(T) / Eric Verdries(T)	
Helibase Manager	Curt Warner	
Helicopter Coordinator	Eric Haskins	
Air Attack Supervisor	Richard Webster / Mark Nunez	
10. Finance Section		
Position	Name	
Chief	Billy Zamora	
Deputy	Barb Haxby	
Time Unit	Rhonda Schwehm / Beth Chandler(T)	
Procurement Unit	Patrick Gallegos	
Compensation Unit / Claims	Tracy Nicholson / Rodger Waters	
Cost Unit	Bonnie Amaral	
Prepared by (Resource Unit Leader)		
Justin Query 		



Soberanes Fire Weather Forecast



FORECAST NO: 38

NAME OF FIRE: Soberanes

PREDICTION FOR: 0600-2200 Tue

UNIT: CA-BEU/LPF MRD

SHIFT DATE: Tuesday Aug 30th, 2016

SIGNED: Ryan Walbrun

TIME AND DATE

Incident Meteorologist

FORECAST ISSUED: 1900 8/29/16

Continued breezy ridgetop winds today

WEATHER DISCUSSION: Breezy winds will continue this morning from the northwest at lower elevations but still northeast in Branch 7 and 8. The trend will be for winds to gradually decrease through the day but still be stronger than previous days. There will be a slight cooling and moistening trend as well but the gusty winds will be the biggest concern through the day. The marine layer will be mostly wiped out by the strong winds and cooling aloft. Strong transport winds will push any smoke to the south with minimal impact on the helibases. Gusty northwest winds will continue for the swing shift before winds gradually ease overnight into Wednesday.

WEATHER FORECAST For Tuesday:

WEATHER: Mostly clear. Areas of smoke interior pushing southward.

TEMPERATURES: Highs 80-90 above 2000 feet...65-75 lower slopes. **24 HR trend-** 2-5 degrees cooler.

HUMIDITY: 15-25% above 2000 feet. 50-60% lower slopes **24 HR trend-** 3-6% wetter

20 FT WINDS:

RIDGETOP - Northerly 8-15 mph with gusts 25-30 mph. Strongest Branch 7&8 from the northeast.

SLOPE/VALLEY - Northerly 4-7 mph afternoon gusts 10-12 mph.

Marine Layer: Around 2000 feet but poorly defined with minimal cloud coverage.

WEATHER FORECAST For Tuesday Night:

WEATHER: Mostly clear early then low clouds forming along the coast overnight.

TEMPERATURES: Lows 65-70 above 2000 feet. 50s lower elevations.

HUMIDITY: Better recovery. 25-40% above 2000 feet...70-90% lower slopes.

20 FT WINDS:

RIDGETOP - North to Northwest 8-18 mph in the evening then 5-10 mph overnight.

SLOPE/VALLEY - Evening upcanyon 4-8 mph staying northerly overnight.

Marine Layer: 2000 feet but still poorly defined most of the night.

EXTENDED FORECAST: An upper trough will be over the state. This will keep temperatures on the cool side of average both day and night. Marine layer around 2000-2500 feet and not as dry above as previous days. General winds will be westerly 5-10 mph.

Portable RAWS Frequency: 163.350 DTMF tones 0032 for H3, 0033 Anderson, 0029 Blue Rock, 0038 Chew Ridge, 0039 Tassajara, 0031 Memorial and 0037 Coastal Ridge.

FIRE BEHAVIOR FORECAST

FORECAST NUMBER 38	TYPE OF FIRE Wildfire
FIRE NAME Soberanes	OPERATIONAL PERIOD 8-30-2016 24 HOUR SHIFT
DATE ISSUED 8-29-2016	TIME ISSUED 1900 HOURS
UNIT CALFIRE BEU & USFS LOS PADRES NF	SIGNED /s/ Robert Ziel FBAN Chris Moore FBAN(t)

INPUTS

WEATHER SUMMARY ***Breezy winds through the morning. Minimal marine layer today ***

Temps: Highs 80-90 above 2000', 65-75 on lower slopes. Lows: 65-70 above 2000' 50s lower elevations.
RH: 15-25% above 2000'. 50-60% lower elevations. Overnight 25-40% above 2000' 70-90% lower slopes.
Winds: Ridges N 8-15 mph gusts 25-30mph. Slope/Valley N 4-7mph afternoon gusts 10-12mph
Night: N to NW 8-18 mph in the evening, then 5-10 overnight. Slope/valley- Evening upcanyon 4-8 staying northerly.

ERC 75 **1hr** 3-5% **Pig** 80% **Rate of spread** head fire in brush 60-80cph **Spotting** up to ½ mile

OUTPUTS

FIRE BEHAVIOR

GENERAL

The last wetting rain for the fire area was May 6th (.19"). Live and dead fuels are critically dry. The fire is burning primarily in a mix of brush and oak burned in the 2008 Basin Fire. Snags, skeleton brush and heavy downed fuels are abundant and will increase the fire line intensity. Fire burning on ridges and exposed areas will show increased behavior during this wind event. Fire burning in sheltered areas or drainage bottoms may not see any increased activity if the wind does not reach canyon bottoms.

Fire behavior will be active with the predicted northerly winds on ridges, exposed slopes and north /south aligned drainages. 10-20' flame lengths in brush fuels should be expected.

SPECIFIC

BRANCH I, II, IX

No forward fire progression is expected.

BRANCH III, IV, V

Fire has established itself in the Carmel River drainage above the Los Padres Reservoir. Wind and slope alignments on south slope near Sulphur Springs Camp may reach the confluence with the Bruce Fork and begin to move updrainage there.

Near Miller Mountain and above the English Cabin any heat remaining will become active when exposed to the northerly winds. English Cabin is about a ½ mile from the fires edge and could become threatened if there is any new fire spread.

Fire will continue to fill in the unburned pocket north and east of Double Cone.

Branch VIII

DIV O/P – In patrol status. No forward fire progression expected despite hot spots burning interior after a good test on Monday.

DIV N - The fire is well established in the South Fork of Big Sur River and Mocho Creek, threatening the head of Pick Creek, the Chimney Area and DP 105. South slope and winds align along the South Fork of Big Sur, with running and short range spotting expected to continue on Tuesday. More northerly winds could push fire across the drainage and up the heavier fuels on the north slopes potentially producing long range spotting into Pick Creek and toward indirect control lines.

Branch VII

DIV UU – Fire is not expected to reach the division in this burn period.

AIR OPERATIONS

Expect the marine layer to lift around 1000-1100, though skies may remain clear overnight.

SAFETY

Continued strong winds will influence fire spread. Local winds may be different from prevailing winds due to topographic influences. Any fire weakened trees will be more likely to fall with the stronger winds.

Division/Group Assignment List (ICS 204 WF)

1. Incident Name:			3.			
SOBERANES			Branch:		Division/Group:	
2. Operational Period:			I,II,IX		SUPP REPAIR 1	
Date/Time From: 08/30/2016 0700	TUE	Date/Time To: 08/31/2016 0700	WED			
4. Operations Personnel						
OPERATIONS CHIEF		RUSS LONG		BRANCH DIRECTOR		
				JONATHON PANGBURN		
PLANNING OPERATIONS		JAYSON COIL KYLE COWAN (T)		DIVISION/GROUP SUPERVISOR		
				JAMES MCDANIEL		
AIR ATTACK SUPERVISOR		RICH WEBSTER		SAFETY OFFICER		
				JACK WISE		
5. Resources Assigned this Period						
Strike Team / Task Force / Resource Designator		LWD	Leader	Number Persons	Drop Off PT./Time	Pick Up PT./Time
STG BEU 9489G C-254		09/01	KEVIN DIXON	33	DP 7/0700	DP 7/1900
EXC PVT VARIAN E-797			MICAH EVESAN	1	DP 7/0700	DP 7/1900
HEQB O-354		09/02	STEVE ESTES	1	DP 7/0700	DP 7/1900
EMPF O-10365		09/05	SCOTT OWEN	1	DP 7/0700	DP 7/1900
6. Control Operations/Work Assignments:						
<p>TASK: Complete suppression rehab per rehab guidelines.</p> <p>PURPOSE: Repair suppression damage and minimize potential for negative post fire effects.</p> <p>END STATE: Resources, lands, and facilities in this geographic area which have been damaged by fire management activities have been returned to pre-management condition to the extent practical.</p>						
7. Special Instructions:						
<p>Resources dispatched to a division from staging are required to receive a briefing specific to their assignment.</p> <p>The Communications Plan is complex; please review the ICS 205 with all division personnel.</p> <p>Use headlights. Slow down. Assume there is a vehicle around each corner. LOOK UP. Be aware of hazard trees. Check for ticks.</p> <p>DIVS, TFL, and HEQB must account for and certify all hired equipment shift tickets during the operational period.</p> <p>Division Supervisors: Effective today the following fire apportionment validation process will be to call Dave Dukart at (805) 698-2541 between 0830-1100.</p> <p>Ensure radio communications are clear and concise when moving into a new work area.</p>						
8. Division/Group Communication Summary						
Function	Channel	RX Frequency N/W	RX Tone/NAC	TX Frequency N/W	TX Tone/NAC	Mode
TACTICAL	6	154.2725N	156.7	154.2725N	156.7	A
MEDICAL	15	156.0750N	156.7	156.0750N	156.7	A
AIR TO GROUND	14	159.2700N	192.8	159.2700N	192.8	A
EMERGENCY	16	168.6250N		168.625N	110.9	A
9. Prepared By (Resource Unit Leader)			Approved By (Planning Section Chief)		Date	Time
JULIE VORACHEK			PETER BUTTERI		08/29/2016	1800

Division/Group Assignment List (ICS 204 WF)

1. Incident Name:			3.			
SOBERANES			I, II, IX		SUPP REPAIR 6	
2. Operational Period:						
Date/Time From: 08/30/2016 0700 TUE		Date/Time To: 08/31/2016 0700 WED				
4. Operations Personnel						
OPERATIONS CHIEF		RUSS LONG		BRANCH DIRECTOR		JONATHAN PANGBURN
PLANNING OPERATIONS		JAYSON COIL KYLE COWAN (T)		DIVISION/GROUP SUPERVISOR		STEW MCMORROW
AIR ATTACK SUPERVISOR		RICH WEBSTER		SAFETY OFFICER		JACK WISE
5. Resources Assigned this Period						
Strike Team / Task Force / Resource Designator		LWD	Leader	Number Persons	Drop Off PT./Time	Pick Up PT./Time
HC1 GABILAN #3 C-232		09/01	DAMON JAMESON	15	DP 36/0700	DP 36/1900
HC2 CHEVAK #1 C-10108		09/08	LEO MOSES	20	DP 36/0700	DP 36/1900
HC2 CHEVAK #2 C-10109		09/08	STEVEN WALKER	20	DP 36/0700	DP 36/1900
HC2 HOOPER BAY #1 C-10110		09/08	ALBERT SIMON	19	DP 36/0700	DP 36/1900
DOZ2 LENAHAHAN'S E-1103			JOHN MUNTZ	2	DP 36/0700	DP 36/1900
DOZ T2 VENTANA E-10320			TOM NASON	1	DP 36/0700	DP 36/1900
WTRK STATEWIDE E-353			STEVEN RADDIGAN	2	DP 36/0700	DP 36/1900
WTS1 INDUSTRIAL E-10133		08/29	SCOTT HAVEY	1	DP 36/0700	DP 36/1900
EXCA JEFF GRAHAM E-10057			JEFF GRAHAM	2	DP 36/0700	DP 36/1900
MAST VENTANA MASTICATOR E-10322		09/07		1	DP 36/0700	DP 36/1900
CHIP TDE CHIP E-1131			NICK MIGNERON	2	DP 36/0700	DP 36/1900
BHOE VENTANA BACKHOE E-1081			AL CAMACHO	1	DP 36/0700	DP 36/1900
HEQB O-10158		08/31	LAKOTA BURWELL	1	DP 36/0700	DP 36/1900
HEQB (T) O-518			GARRETT BULLIS	1	DP 36/0700	DP 36/1900
RESP O-1452		08/29	GUY ANDERSON	1	DP 36/0700	DP 36/1900
FSRS O-1473		09/05	BRANDON RODGERS	1	DP 36/0700	DP 36/1900
FSRS O-1471		09/04	JACK HARVEY	1	DP 36/0700	DP 36/1900
THSP O-1396		08/31	NICHOLAS SHEW	1	DP 36/0700	DP 36/1900
EMPF O-10209		08/30	JOBEE FARRER	1	DP 36/0700	DP 36/1900
8. Division/Group Communication Summary						
Function	Channel	RX Frequency N/W	RX Tone/NAC	TX Frequency N/W	TX Tone/NAC	Mode
TACTICAL	8	154.3025N	156.7	154.3025N	156.7	A
MEDICAL	15	156.0750N	156.7	156.0750N	156.7	A
AIR TO GROUND TAC	14	159.2700N	192.8	159.2700N	192.8	A
EMERGENCY	16	168.6250N		168.6250N	110.9	A
9. Prepared By (Resource Unit Leader)			Approved By (Planning Section Chief)		Date	Time
JULIE VORACHEK			PETER BUTTERI		08/29/2016	1800

Division/Group Assignment List (ICS 204 WF)

1. Incident Name:			3.			
SOBERANES			I, II, IX		SUPP REPAIR 6	
2. Operational Period:						
Date/Time From:		Date/Time To:				
08/30/2016 0700	TUE	08/31/2016 0700	WED			
4. Operations Personnel						
OPERATIONS CHIEF	RUSS LONG		BRANCH DIRECTOR	JONATHAN PANGBURN		
PLANNING OPERATIONS	JAYSON COIL KYLE COWAN (T)		DIVISION/GROUP SUPERVISOR	STEW MCMORROW		
AIR ATTACK SUPERVISOR	RICH WEBSTER		SAFETY OFFICER	JACK WISE		
6. Control Operations/Work Assignments:						
<p>TASK: Complete suppression rehab per rehab guidelines.</p> <p>PURPOSE: Repair suppression damage and minimize potential for negative post fire effects.</p> <p>END STATE: Resources, lands, and facilities in this geographic area which have been damaged by fire management activities have been returned to pre-management condition to the extent practical. This effort consists of rolling berms, installing drivable water bars, and replacing topsoil. None of the actions taken would limit the ability to use the line as a secondary control feature.</p>						
7. Special Instructions:						
<p>Resources dispatched to a division from staging are required to receive a briefing specific to their assignment.</p> <p>The Communications Plan is complex; please review the ICS 205 with all division personnel.</p> <p>Use headlights. Slow down. Assume there is a vehicle around each corner. LOOK UP. Be aware of hazard trees.</p> <p>DIVS, TFL, and HEQB must account for and certify all hired equipment shift tickets during the operational period.</p> <p>Watch for overhead power lines and propane tanks.</p> <p>Division Supervisors: Effective today the following fire apportionment validation process will be to call Dave Dukart at (805) 698-2541 between 0830-1100.</p> <p>Brief incoming crews on local fire behavior terrain influences.</p>						
8. Division/Group Communication Summary						
Function	Channel	RX Frequency N/W	RX Tone/NAC	TX Frequency N/W	TX Tone/NAC	Mode
TACTICAL	8	154.3025N	156.7	154.3025N	156.7	A
MEDICAL	15	156.0750N	156.7	156.0750N	156.7	A
AIR TO GROUND TAC	14	159.2700N	192.8	159.2700N	192.8	A
EMERGENCY	16	168.6250N		168.6250N	110.9	A
9. Prepared By (Resource Unit Leader)			Approved By (Planning Section Chief)		Date	Time
JULIE VORACHEK			PETER BUTTERI		08/29/2016	1800

Division/Group Assignment List (ICS 204 WF)

1. Incident Name:			3.			
SOBERANES			III / IV		J/K	
2. Operational Period:						
Date/Time From: 08/30/2016 0700 TUE		Date/Time To: 08/31/2016 0700 WED				
4. Operations Personnel						
OPERATIONS CHIEF		RUSS LONG		BRANCH DIRECTOR		DOUG DOWNS
PLANNING OPERATIONS		JAYSON COIL KYLE COWAN (T)		DIVISION/GROUP SUPERVISOR		SHANE MARTIN
AIR ATTACK SUPERVISOR		RICH WEBSTER		SAFETY OFFICER		BRUCE MALLOY TRAVIS DOTSON (T)
5. Resources Assigned this Period						
Strike Team / Task Force / Resource Designator		LWD	Leader	Number Persons	Drop Off PT./Time	Pick Up PT./Time
CREW - T1 - CARSON HOTSHOTS IHC C-10115		09/08	TIM MEMMER	22	DP 36/0700	DP 36/1900
6. Control Operations/Work Assignments:						
<p>TASK: Monitor Fire Activity and Develop Strategy/MAPs that identify a high probability of success for holding line.</p> <p>PURPOSE: To ensure a coordinated firing action occurs if fire threatens line.</p> <p>END STATE: A plan and MAP is created that allows for adequate time to staff appropriately to conduct a successful firing operation</p>						
7. Special Instructions:						
<p>The Communications Plan is complex; please review the ICS 205 with all Division personnel.</p> <p>DIVS, TFL, and HEQB must account for & certify all hired equipment shift tickets during the operational period.</p> <p>Use headlights. Slow down. Assume there is a vehicle around each corner.</p> <p>Honk horn before going around blind corners.</p> <p>Division Supervisors: Effective today the following fire apportionment validation process will be to call Kris Armstrong at (661) 342-7297 between 0830-1100.</p>						
8. Division/Group Communication Summary						
Function	Channel	RX Frequency N/W	RX Tone/NAC	TX Frequency N/W	TX Tone/NAC	Mode
TACTICAL	12	151.1375N	156.7	151.1375N	156.7	A
MEDICAL	15	156.0750N	156.7	156.0750N	156.7	A
AIR TO GROUND TAC	14	159.2700N	192.8	159.2700N	192.8	A
EMERGENCY	16	168.6250N		168.6250N	110.9	A
9. Prepared By (Resource Unit Leader)			Approved By (Planning Section Chief)		Date	Time
JULIE VORACHEK			PETER BUTTERI		08/29/2016	1800

Division/Group Assignment List (ICS 204 WF)

1. Incident Name:			3.			
SOBERANES			Branch:		Division/Group:	
2. Operational Period:			III/IV		M/AA/CC/EE	
Date/Time From: 08/30/2016 0700 TUE		Date/Time To: 08/31/2016 0700 WED				
4. Operations Personnel						
OPERATIONS CHIEF		RUSS LONG		BRANCH DIRECTOR		DOUG DOWNS
PLANNING OPERATIONS		JAYSON COIL KYLE COWAN (T)		DIVISION/GROUP SUPERVISOR		TOGIE WIEHL SETH ROSS (T)
AIR ATTACK SUPERVISOR		RICHARD WEBSTER		SAFETY OFFICER		BRUCE MALLOY TRAVIS DOTSON (T)
5. Resources Assigned this Period						
Strike Team / Task Force / Resource Designator		LWD	Leader	Number Persons	Drop Off PT./Time	Pick Up PT./Time
FOBS NATE PERRINE O-10542		09/11		1	DP 43/0700	DP 43/1900
FOBS JOHN ASHCRAFT (T) O-10381		09/06		1	DP 43/0700	DP 43/1900
6. Control Operations/Work Assignments:						
Scout all division lines for burn-out opportunities.						
7. Special Instructions:						
*READS will report in and out to Branch Director III/IV when working in Divisions L and M. Division Supervisors: Effective today the following fire apportionment validation process will be to call Kris Armstrong at (661) 342-7297 between 0830-1100.						
8. Division/Group Communication Summary						
Function	Channel	RX Frequency N/W	RX Tone/NAC	TX Frequency N/W	TX Tone/NAC	Mode
TACTICAL	6	154.4525N	156.7	154.4525N	156.7	A
MEDICAL	15	156.0750N	156.7	156.0750N	156.7	A
AIR TO GROUND	14	159.2700N	192.8	159.2700N	192.8	A
EMERGENCY	16	168.6250N		168.625N	110.9	A
9. Prepared By (Resource Unit Leader)			Approved By (Planning Section Chief)		Date	Time
JULIE VORACHEK			PETER BUTTERI		08/29/2016	1800

Division/Group Assignment List (ICS 204 WF)

1. Incident Name:			3.			
SOBERANES			Branch:		Division/Group:	
2. Operational Period:			III / IV		EAST STRUCTURE GRP	
Date/Time From: 08/30/2016 0700 TUE		Date/Time To: 08/31/2016 0700 WED				
4. Operations Personnel						
OPERATIONS CHIEF		RUSS LONG		BRANCH DIRECTOR		DOUG DOWNS
PLANNING OPERATIONS		JAYSON COIL KYLE COWAN (T)		DIVISION/GROUP SUPERVISOR		DANA BAGNOLI
AIR ATTACK SUPERVISOR		RICH WEBSTER		SAFETY OFFICER		BRUCE MALLOY TRAVIS DOTSON (T)
5. Resources Assigned this Period						
Strike Team / Task Force / Resource Designator		LWD	Leader	Number Persons	Drop Off PT./Time	Pick Up PT./Time
ENG6 SANTA FE ENGINE 621 E-10282		09/01		3	TORO/0700	TORO/1900
SOBERANES TASK FORCE #1				1	TORO/0700	TORO/1900
STEN JOHN M GARRETT O-10515		09/06		1	TORO/0700	TORO/1900
HC2I RETURNING HEROES #1 C-10117		09/09	TERRELL TREAT	19	TORO/0700	TORO/1900
ENG3 GOLDER RANCH BRUSH 370 E-10276		09/08	COLIN PORT	4	TORO/0700	TORO/1900
ENG3 MAYER E-2201 E-10273		09/08	TOM HANEY	3	TORO/0700	TORO/1900
ENG6 CHIHUAHUA E-10261		09/08	CHARLES CLAPPER	3	TORO/0700	TORO/1900
ENG6 NORTH COUNTY BRUSH104 E-10253		09/08	STEVE FLORES	4	TORO/0700	TORO/1900
ENG6 A/S ENG613 E-10246		09/09	MATT BUSTAMANTE	3	TORO/0700	TORO/1900
SOBERANES TASK FORCE #2				1	TORO/0700	TORO/1900
STEN CHRIS BRENZEL O-10524		09/08		1	TORO/0700	TORO/1900
HC2I SAN CARLOS #2 C-10118		09/09	JIMI PHILLIPS	19	TORO/0700	TORO/1900
ENG 3 PEORIA E-10263		09/08	TYSON ESQUIBEL	4	TORO/0700	TORO/1900
ENG3 DAISY MTN E-10274		09/08	JERRY KNORR	4	TORO/0700	TORO/1900
ENG6 TUBAC E-10257		09/08	TIM ZAMORA	2	TORO/0700	TORO/1900
ENG6 BENSON E-10265		09/08	KENNETH GAYNOR	3	TORO/0700	TORO/1900
WTT2 W/T T2 PVT HOLT E-10134		09/02	FRANK LOPEZ	1	TORO/0700	TORO/1900
8. Division/Group Communication Summary						
Function	Channel	RX Frequency N/W	RX Tone/NAC	TX Frequency N/W	TX Tone/NAC	Mode
TACTICAL	10	154.2875N	156.7	154.2875N	156.7	A
MEDICAL	15	156.0750N	156.7	156.0750N	156.7	A
AIR TO GROUND	14	159.2700N	192.8	159.2700N	192.8	A
EMERGENCY	16	168.6250N		168.625N	110.9	A
9. Prepared By (Resource Unit Leader)			Approved By (Planning Section Chief)		Date	Time
JULIE VORACHEK			PETER BUTTERI		08/29/2016	1800

Division/Group Assignment List (ICS 204 WF)

1. Incident Name:			3.			
SOBERANES			III / IV		EAST STRUCTURE GRP	
2. Operational Period:						
Date/Time From: 08/30/2016 0700 TUE		Date/Time To: 08/31/2016 0700 WED				
4. Operations Personnel						
OPERATIONS CHIEF		RUSS LONG		BRANCH DIRECTOR		DOUG DOWNS
PLANNING OPERATIONS		JAYSON COIL KYLE COWAN (T)		DIVISION/GROUP SUPERVISOR		DANA BAGNOLI
AIR ATTACK SUPERVISOR		RICH WEBSTER		SAFETY OFFICER		BRUCE MALLOY TRAVIS DOTSON (T)
5. Resources Assigned this Period						
Strike Team / Task Force / Resource Designator		LWD	Leader	Number Persons	Drop Off PT./Time	Pick Up PT./Time
ENG3 FARMINGTON BRUSH #4 E-10270		09/08	JARED J THORNBURG	3	TORO/0700	TORO/1900
ENG3 BERNCO ENG54 E-10269		09/08	MIKE BENTON	3	TORO/0700	TORO/1900
SOBERANES TASK FORCE #3				1	TORO/0700	TORO/1900
TFLD JOHN STEBNER O-10325		09/08		1	TORO/0700	TORO/1900
HC2I FORT APACHE #06 C-10116		09/08	AMEX TESSAY	21	TORO/0700	TORO/1900
ENG3 PINE TOP E-10262		09/08	MARCUM ROVA	3	TORO/0700	TORO/1900
ENG3 CONCHO E-1458 E-10258		09/08	JD OTTMAN	3	TORO/0700	TORO/1900
ENG6 ANTHIS FAMILY E-10284		09/08	JASON PHILLIPS	3	TORO/0700	TORO/1900
ENG6 ANGEL FIRE E-10286		09/08	ANDREW BERTGES	3	TORO/0700	TORO/1900
WTS2 FIRELINE SUPPORT SERVICES E-10438			MATT MICHAELS	1	TORO/0700	TORO/1900
FEMP O-10364		09/05	JACOB CURRIE	1	TORO/0700	TORO/1900
SOFR O-10221		09/01	BRIAN KEITH PISAREK	1	TORO/0700	TORO/1900
6. Control Operations/Work Assignments:						
TASK: Develop structure protection plan. PURPOSE: Ensure adequate resources and an appropriate strategy is identified to protect structures. END STATE: Resource and Equipment needs are identified and MAPs that allow for successful protection of values at risk.						
7. Special Instructions:						
8. Division/Group Communication Summary						
Function	Channel	RX Frequency N/W	RX Tone/NAC	TX Frequency N/W	TX Tone/NAC	Mode
TACTICAL	10	154.2875N	156.7	154.2875N	156.7	A
MEDICAL	15	156.0750N	156.7	156.0750N	156.7	A
AIR TO GROUND	14	159.2700N	192.8	159.2700N	192.8	A
EMERGENCY	16	168.6250N		168.625N	110.9	A
9. Prepared By (Resource Unit Leader)			Approved By (Planning Section Chief)		Date	Time
JULIE VORACHEK			PETER BUTTERI		08/29/2016	1800

Division/Group Assignment List (ICS 204 WF)

1. Incident Name:		3.				
SOBERANES		III / IV		EAST STRUCTURE GRP		
2. Operational Period:						
Date/Time From: 08/30/2016 0700	TUE	Date/Time To: 08/31/2016 0700	WED			
4. Operations Personnel						
OPERATIONS CHIEF	RUSS LONG		BRANCH DIRECTOR	DOUG DOWNS		
PLANNING OPERATIONS	JAYSON COIL KYLE COWAN (T)		DIVISION/GROUP SUPERVISOR	DANA BAGNOLI		
AIR ATTACK SUPERVISOR	RICH WEBSTER		SAFETY OFFICER	BRUCE MALLOY TRAVIS DOTSON (T)		
7. Special Instructions:						
<p>The Communications Plan is complex; please review the ICS 205 with all Division personnel. DIVS, TFL, and HEQB must account for & certify all hired equipment shift tickets during the operational period. Use headlights. Slow down. Assume there is a vehicle around each corner. Division Supervisors: Effective today, the following fire apportionment validation process will be to call Kris Armstrong at (661) 342-7297 between 0830-1100.</p>						
8. Division/Group Communication Summary						
Function	Channel	RX Frequency N/W	RX Tone/NAC	TX Frequency N/W	TX Tone/NAC	Mode
TACTICAL	10	154.2875N	156.7	154.2875N	156.7	A
MEDICAL	15	156.0750N	156.7	156.0750N	156.7	A
AIR TO GROUND	14	159.2700N	192.8	159.2700N	192.8	A
EMERGENCY	16	168.6250N		168.625N	110.9	A
9. Prepared By (Resource Unit Leader)		Approved By (Planning Section Chief)		Date	Time	
JULIE VORACHEK		PETER BUTTERI		08/29/2016	1800	

Division/Group Assignment List (ICS 204 WF)

1. Incident Name:			3.			
SOBERANES			III / IV	EAST FIRING GROUP		
2. Operational Period:						
Date/Time From:	TUE	Date/Time To:	WED			
08/30/2016 0700		08/31/2016 0700				
4. Operations Personnel						
OPERATIONS CHIEF	RUSS LONG		BRANCH DIRECTOR	DOUG DOWNS		
PLANNING OPERATIONS	JAYSON COIL KYLE COWAN (T)		DIVISION/GROUP SUPERVISOR			
AIR ATTACK SUPERVISOR	RICH WEBSTER		SAFETY OFFICER	TOM HUDSON GREG ARKLE (T)		
5. Resources Assigned this Period						
Strike Team / Task Force / Resource Designator	LWD	Leader	Number Persons	Drop Off PT./Time	Pick Up PT./Time	
6. Control Operations/Work Assignments:						
7. Special Instructions:						
<p>The Communications Plan is complex; please review the ICS 205 with all Division personnel. Use headlights. Slow down. Assume there is a vehicle around each corner. Division Supervisors: Effective today the following fire apportionment validation process will be to call Kris Armstrong at (661) 342-7297 between 0830-1100.</p>						
8. Division/Group Communication Summary						
Function	Channel	RX Frequency N/W	RX Tone/NAC	TX Frequency N/W	TX Tone/NAC	Mode
TACTICAL	11	151.2575N	192.8	151.2575N	192.8	A
MEDICAL	15	156.0750N	156.7	156.0750N	156.7	A
AIR TO GROUND	14	159.2700N	192.8	159.2700N	192.8	A
EMERGENCY	16	168.6250N		168.625N	110.9	A
9. Prepared By (Resource Unit Leader)			Approved By (Planning Section Chief)		Date	Time
JULIE VORACHEK			PETER BUTTERI		08/29/2016	1800

Division/Group Assignment List (ICS 204 WF)

1. Incident Name:			3.			
SOBERANES			V		GG	
2. Operational Period:						
Date/Time From: 08/30/2016 0700 TUE		Date/Time To: 08/31/2016 0700 WED				
4. Operations Personnel						
OPERATIONS CHIEF		RUSS LONG		BRANCH DIRECTOR		JEFF SCHARDT
PLANNING OPERATIONS		JAYSON COIL KYLE COWAN (T)		DIVISION/GROUP SUPERVISOR		JEFF STARK JAMES THORNOCK (T)
AIR ATTACK SUPERVISOR		RICH WEBSTER		SAFETY OFFICER		LARRY CONNELL TRAVIS DOTSON (T)
5. Resources Assigned this Period						
Strike Team / Task Force / Resource Designator		LWD	Leader	Number Persons	Drop Off PT./Time	Pick Up PT./Time
HC2 FORT APACHE #04 C-10151		09/01	BURNNETT BENNETT	21	LIGGETT/0700	LIGGETT/1900
HC2 ROAD RUNNERS C-10111		09/14	STEVEN RUSHING	20	LIGGETT/0700	LIGGETT/1900
DOZ2 LOUIS MOOSIOS DOZER E-221		09/07	LOUIS MOOSIOS	1	LIGGETT/0700	LIGGETT/1900
CHIP GREENOUS CHIP E-10088		09/13	FRANK DROGOWSKI	2	LIGGETT/0700	LIGGETT/1900
SKG2 SKE T2 PVT RIM ROCK E-10053		09/02	TROY RIGEL	3	LIGGETT/0700	LIGGETT/1900
SKG2 SKE T2 PVT LET ER BUCK E-10054		09/06	CLIFF ROWEN	1	LIGGETT/0700	LIGGETT/1900
MAST MAS T2 PVT NORTHSTATE E-10090		09/02	MAURICE RHODES	1	LIGGETT/0700	LIGGETT/1900
MAST MAS T2 PVT SWARTHOUT E-10094		09/04	JOSH SWARTHOUT	2	LIGGETT/0700	LIGGETT/1900
TFLD O-10348		09/05	JOSH OCONNOR	1	LIGGETT/0700	LIGGETT/1900
HEQB O-10403		09/07	JAMES MASHBURN	1	LIGGETT/0700	LIGGETT/1900
HEQB (T) O-10406		09/07	RICHARD M RAY	1	LIGGETT/0700	LIGGETT/1900
HEQB O-10352		09/06	PAUL LESLIE CATLETT	1	LIGGETT/0700	LIGGETT/1900
HEQB (T) O-10328		09/06	THOMAS F KROCK	1	LIGGETT/0700	LIGGETT/1900
EMTF O-10554		08/30	JON MILLER	1	LIGGETT/0700	LIGGETT/1900
EMTF O-10600		08/30	JOHN MURAOKA	1	LIGGETT/0700	LIGGETT/1900
EMPF O-10601		09/02	SPENCER JOHNSON	1	LIGGETT/0700	LIGGETT/1900
EMTF AMERICAN FIRE SUPPORT E-10411		09/12	JON ZARECOR	1	LIGGETT/0700	LIGGETT/1900
6. Control Operations/Work Assignments:						
8. Division/Group Communication Summary						
Function	Channel	RX Frequency N/W	RX Tone/NAC	TX Frequency N/W	TX Tone/NAC	Mode
TACTICAL	8	166.5500N		166.5500N		A
MEDICAL	15	156.0750N	156.7	156.0750N	156.7	A
AIR TO GROUND TAC	14	159.2700N	192.8	159.2700N	192.8	A
EMERGENCY	16	168.6250N		168.6250N	110.9	A
9. Prepared By (Resource Unit Leader)			Approved By (Planning Section Chief)		Date	Time
JODI RIST			PETER BUTTERI		08/29/2016	2000

Division/Group Assignment List (ICS 204 WF)

1. Incident Name:			3.			
SOBERANES			V	GG		Branch:
						Division/Group:
2. Operational Period:						
Date/Time From:		Date/Time To:				
08/30/2016 0700	TUE	08/31/2016 0700	WED			
4. Operations Personnel						
OPERATIONS CHIEF	RUSS LONG		BRANCH DIRECTOR	JEFF SCHARDT		
PLANNING OPERATIONS	JAYSON COIL KYLE COWAN (T)		DIVISION/GROUP SUPERVISOR	JEFF STARK JAMES THORNOCK (T)		
AIR ATTACK SUPERVISOR	RICH WEBSTER		SAFETY OFFICER	LARRY CONNELL TRAVIS DOTSON (T)		
6. Control Operations/Work Assignments:						
<p>TASK: Complete indirect line construction. PURPOSE: To prevent fire growth east of control lines. END STATE: Indirect fireline is completed and will be adequate to provide for a high probability of success.</p> <p>TASK: Assess and complete structure protection at Arryo Seco. PURPOSE: To protect structures and infrastructure from the fire. END STATE: Hose lays are completed and will adequately provide protection of structures from the fire.</p> <p>TASK: Assess and implement the needs for structure protection of Fred's camp. PURPOSE: To protect structures and infrastructure at Fred's camp from the fire. END STATE: Provide adequate structure protection to structures and infrastructure in Fred's camp in the event the fire reaches the camp.</p>						
7. Special Instructions:						
<p>The Communications Plan is complex; please review the ICS 205 with all Division personnel. LOOK UP, Be Aware of Hazard Trees. DIVS, TFL, and HEQB must account for & certify all hired equipment shift tickets during the operational period. Use headlights. Slow down. Assume there is a vehicle around each corner. Division Supervisors: Effective today the following fire apportionment validation process will be to call Kris Armstrong at (661) 342-7297 between 0830-1100.</p>						
8. Division/Group Communication Summary						
Function	Channel	RX Frequency N/W	RX Tone/NAC	TX Frequency N/W	TX Tone/NAC	Mode
TACTICAL	8	166.5500N		166.5500N		A
MEDICAL	15	156.0750N	156.7	156.0750N	156.7	A
AIR TO GROUND TAC	14	159.2700N	192.8	159.2700N	192.8	A
EMERGENCY	16	168.6250N		168.6250N	110.9	A
9. Prepared By (Resource Unit Leader)			Approved By (Planning Section Chief)		Date	Time
JODI RIST			PETER BUTTERI		08/29/2016	2000

Division/Group Assignment List (ICS 204 WF)

1. Incident Name:			3.			
SOBERANES			V		II	
2. Operational Period:						
Date/Time From: 08/30/2016 0700 TUE		Date/Time To: 08/31/2016 0700 WED				
4. Operations Personnel						
OPERATIONS CHIEF		RUSS LONG		BRANCH DIRECTOR		JEFFREY SCHARDT
PLANNING OPERATIONS		JAYSON COIL KYLE COWAN (T)		DIVISION/GROUP SUPERVISOR		CRAIG MARTIN
AIR ATTACK SUPERVISOR		RICH WEBSTER		SAFETY OFFICER		LARRY CONNELL TRAVIS DOTSON (T)
5. Resources Assigned this Period						
Strike Team / Task Force / Resource Designator		LWD	Leader	Number Persons	Drop Off PT./Time	Pick Up PT./Time
DIVS O-10350		09/05	JEREMY BRAND	1	DP 45/0700	DP 45/1900
DOZ2 VENTANA DOZER E-10321		08/04	BRYCE NASON	1	DP 45/0700	DP 45/1900
WTT2 INF 21 E-10023		08/18	BRIAN PRICE	2	DP 45/0700	DP 45/1900
WTS2 KRITZ E-10131		08/27	DAVID HARVEY	1	DP 45/0700	DP 45/1900
TFLD O-10324		09/05	DENNIS STERN	1	DP 45/0700	DP 45/1900
TFLD O-10349		09/05	CHRISTOPHER DUNN III	1	DP 45/0700	DP 45/1900
HEQB (T) O-10401		09/07	CHRISTOPHER HAINES	1	DP 45/0700	DP 45/1900
HEQB O-10409		09/07	LESLIE BLACKWELL	1	DP 45/0700	DP 45/1900
FOBS O-10332		08/30	BRUCE CANN	1	DP 45/0700	DP 45/1900
FOBS (T) O-10487		09/09	CHRIS WILLIAMS	1	DP 45/0700	DP 45/1900
FOBS (T) O-10488		09/09	GREGORY SUSZEK	1	DP 45/0700	DP 45/1900
READ O-487			TOM MURPHEY	1	DP 45/0700	DP 45/1900
READ O-10448		09/10	BILL GOODMAN	1	DP 45/0700	DP 45/1900
READ O-10532			JEFF KWASNY	1	DP 45/0700	DP 45/1900
EMPF O-10414		09/07	ANTHONY RIVAS	1	DP 45/0700	DP 45/1900
EMPF O-10415		09/07	FABIAN URESTI	1	DP 45/0700	DP 45/1900
SOFR O-10182		08/29	FEDERICO HERNANDEZ	1	DP 45/0700	DP 45/1900
6. Control Operations/Work Assignments:						
8. Division/Group Communication Summary						
Function	Channel	RX Frequency N/W	RX Tone/NAC	TX Frequency N/W	TX Tone/NAC	Mode
TACTICAL	12	151.1375N	156.7	151.1375N	156.7	A
MEDICAL	15	156.0750N	156.7	156.0750N	156.7	A
AIR TO GROUND	14	159.2700N	192.8	159.2700N	192.8	A
EMERGENCY	16	168.6250N		168.6250N	110.9	A
9. Prepared By (Resource Unit Leader)			Approved By (Planning Section Chief)		Date	Time
JULIE VORACHEK			PETER BUTTERI		08/29/2016	1800

Division/Group Assignment List (ICS 204 WF)

1. Incident Name:			3.			
SOBERANES			Branch:		Division/Group:	
2. Operational Period:			V		II	
Date/Time From: 08/30/2016 0700 TUE		Date/Time To: 08/31/2016 0700 WED				
4. Operations Personnel						
OPERATIONS CHIEF		RUSS LONG		BRANCH DIRECTOR		
				JEFFREY SCHARDT		
PLANNING OPERATIONS		JAYSON COIL KYLE COWAN (T)		DIVISION/GROUP SUPERVISOR		
				CRAIG MARTIN		
AIR ATTACK SUPERVISOR		RICH WEBSTER		SAFETY OFFICER		
				LARRY CONNELL TRAVIS DOTSON (T)		
6. Control Operations/Work Assignments:						
<p>TASK: Complete structure protection hose lays at Memorial around private and government structures, have fire wrap available to wrap the historic Indian Guard Station, if needed.</p> <p>PURPOSE: To protect private structures and the historic Indian Guard Station in the event the fire escapes containment lines.</p> <p>END STATE: Hose lays with water sources are completed and will adequately provide protection of the structures in the event the fire reaches the area.</p> <p>TASK: Remove mastication debris around Escondido Camp Ground.</p> <p>PURPOSE: To protect camp ground from fire.</p> <p>END STATE: Mastication debris is removed from camp ground and will not present an additional hazard to facilities.</p>						
7. Special Instructions:						
<p>The Communications Plan is complex; please review the ICS 205 with all Division personnel.</p> <p>LOOK UP, Be Aware of Hazard Trees.</p> <p>DIVS, TFL, and HEQB must account for & certify all hired equipment shift tickets during the operational period.</p> <p>Use headlights. Slow down. Assume there is a vehicle around each corner.</p> <p>Division Supervisors: Effective today the following fire apportionment validation process will be to call Kris Armstrong at (661) 342-7297 between 0830-1100.</p>						
8. Division/Group Communication Summary						
Function	Channel	RX Frequency N/W	RX Tone/NAC	TX Frequency N/W	TX Tone/NAC	Mode
TACTICAL	12	151.1375N	156.7	151.1375N	156.7	A
MEDICAL	15	156.0750N	156.7	156.0750N	156.7	A
AIR TO GROUND	14	159.2700N	192.8	159.2700N	192.8	A
EMERGENCY	16	168.6250N		168.6250N	110.9	A
9. Prepared By (Resource Unit Leader)			Approved By (Planning Section Chief)		Date	Time
JULIE VORACHEK			PETER BUTTERI		08/29/2016	1800

Division/Group Assignment List (ICS 204 WF)

1. Incident Name:				3.		
SOBERANES				VII / VIII	Division/Group: BIG SUR STRUCTURE	
2. Operational Period:						
Date/Time From: 08/30/2016 0700 TUE		Date/Time To: 08/31/2016 0700 WED				
4. Operations Personnel						
OPERATIONS CHIEF	RUSS LONG		BRANCH DIRECTOR	RUSS COPP WILLIE BRANSON (T)		
PLANNING OPERATIONS	JAYSON COIL KYLE COWAN (T)		DIVISION/GROUP SUPERVISOR	GARY BAUMGARTNER		
AIR ATTACK SUPERVISOR	RICH WEBSTER		SAFETY OFFICER	TOM HUDSON GREG ARKLE (T)		
5. Resources Assigned this Period						
Strike Team / Task Force / Resource Designator	LWD	Leader	Number Persons	Drop Off PT./Time	Pick Up PT./Time	
HC2 HUSLIA #1 C-10106	09/08	DARRELL SAM	20	MOLERA/0700	MOLERA/0700	
HC2 KALTAG #1 C-10107	09/08	STANLEY DEMOSKI	20	MOLERA/0700	MOLERA/0700	
ENG3 NM SAN JUAN CNTY BRUSH 13 E-10241	09/03	AARION AUSTIN	3	MOLERA/0700	MOLERA/0700	
SOBERANES STRIKE TEAM #1			1	MOLERA/0700	MOLERA/0700	
STEN O-10518		MATHEW MAYHALL	1	MOLERA/0700	MOLERA/0700	
STEN (T) O-10445	09/08	FRANK ZUPANCIC	1	MOLERA/0700	MOLERA/0700	
ENG6 AZ STATE 363 E-10288	09/07	STEVE ESTELLE	4	MOLERA/0700	MOLERA/0700	
ENG6 AZ STATE E161 E-10289	09/07	STEVEN GRIEGO	3	MOLERA/0700	MOLERA/0700	
SOBERANES STRIKE TEAM #2			1	MOLERA/0700	MOLERA/0700	
ENG6 PINO 1 E-10260	09/08	DARIN PINO	3	MOLERA/0700	MOLERA/0700	
ENG6 VERDE VALLEY F-366 E-10290	09/08	JOEL ROSENBERG	3	MOLERA/0700	MOLERA/0700	
ENG6 BLOOMFIELD BRUSH #1 E-10251	09/07	TRAVIS OLBERT	3	MOLERA/0700	MOLERA/0700	
STEN O-10517	09/08	BEN ROCHE	1	MOLERA/0700	MOLERA/0700	
STEN (T) O-10436	09/08	KURT WALKER	1	MOLERA/0700	MOLERA/0700	
ENG6 YABOY 805 E-10250	09/08	BRETT BOWER	3	MOLERA/0700	MOLERA/0700	
ENG6 YABOY 707 E-10256	09/08	ROBERT MORRIS	3	MOLERA/0700	MOLERA/0700	
ENG6 RIO RANCHO BRUSH SS E-10285	09/07	DAMIAN MAINOLFA	3	MOLERA/0700	MOLERA/0700	
8. Division/Group Communication Summary						
Function	Channel	RX Frequency N/W	RX Tone/NAC	TX Frequency N/W	TX Tone/NAC	Mode
TACTICAL	10	151.1450N	192.8	151.1450N	192.8	A
MEDICAL	15	156.0750N	156.7	156.0750N	156.7	A
AIR TO GROUND TAC	14	159.2700N	192.8	159.2700N	192.8	A
EMERGENCY	16	168.6250N		168.6250N	110.9	A
9. Prepared By (Resource Unit Leader)			Approved By (Planning Section Chief)		Date	Time
JODI RIST			PETER BUTTERI		08/29/2016	1800

Division/Group Assignment List (ICS 204 WF)

1. Incident Name:			3.				
SOBERANES			Branch:		Division/Group:		
2. Operational Period:			VII / VIII		BIG SUR STRUCTURE		
Date/Time From: 08/30/2016 0700 TUE		Date/Time To: 08/31/2016 0700 WED					
4. Operations Personnel							
OPERATIONS CHIEF		RUSS LONG		BRANCH DIRECTOR		RUSS COPP WILLIE BRANSON (T)	
PLANNING OPERATIONS		JAYSON COIL KYLE COWAN (T)		DIVISION/GROUP SUPERVISOR		GARY BAUMGARTNER	
AIR ATTACK SUPERVISOR		RICH WEBSTER		SAFETY OFFICER		TOM HUDSON GREG ARKLE (T)	
5. Resources Assigned this Period							
Strike Team / Task Force / Resource Designator		LWD	Leader		Number Persons	Drop Off PT./Time	Pick Up PT./Time
ENG6 SONOTA ELGIN E-825 E-10254		09/07	BRIAN JACKSON			MOLERA/0700	MOLERA/0700
ENG6 NOGALES SUBURBAN E-10247		09/09	OSCAR VERDUGO		3	MOLERA/0700	MOLERA/0700
DIVS O-10472		09/03	DEREK PATTON		1	MOLERA/0700	MOLERA/0700
TFLD (T) O-10398		09/07	TUMASI ROSS		1	MOLERA/0700	MOLERA/0700
TFLD (T) O-10471		09/03	AARON SCHUMACHER		1	MOLERA/0700	MOLERA/0700
STEN O-10433		09/09	DAN WHITE		1	MOLERA/0700	MOLERA/0700
EMPF O-10362		09/05	DAVID B DURHAM		1	MOLERA/0700	MOLERA/0700
EMTF O-10504		09/11	DAVID JENSEN		1	MOLERA/0700	MOLERA/0700
6. Control Operations/Work Assignments:							
<p>TASK: Assess Partington Ridge community and other identified structures/subdivisions along Highway 1.</p> <p>PURPOSE: To protect all values at risk along the Highway 1 Corridor adjacent to the fire.</p> <p>END STATE: All structures were protected and no loss of infrastructure occurred.</p>							
7. Special Instructions:							
<p>Use headlights. Slow down. Assume there is a vehicle around each corner.</p> <p>Fire personnel in staging along Hwy 1 place traffic cones, wear visible clothing and use overhead lights when pulling off and on the highway.</p> <p>Division Supervisors: Effective today the following fire apportionment validation process will be to call Dave Dukart at (805) 698-2541 between 0830-1100.</p>							
8. Division/Group Communication Summary							
Function	Channel	RX Frequency N/W	RX Tone/NAC	TX Frequency N/W	TX Tone/NAC	Mode	
TACTICAL	10	151.1450N	192.8	151.1450N	192.8	A	
MEDICAL	15	156.0750N	156.7	156.0750N	156.7	A	
AIR TO GROUND TAC	14	159.2700N	192.8	159.2700N	192.8	A	
EMERGENCY	16	168.6250N		168.6250N	110.9	A	
9. Prepared By (Resource Unit Leader)			Approved By (Planning Section Chief)		Date	Time	
JODI RIST			PETER BUTTERI		08/29/2016	1800	

Division/Group Assignment List (ICS 204 WF)

1. Incident Name:			3.			
SOBERANES			VII / VIII	DIVISION/GROUP: BIG SUR FIRING GROUP		
2. Operational Period:						
Date/Time From:	Date/Time To:					
08/30/2016 0700 TUE	08/31/2016 0700 WED					
4. Operations Personnel						
OPERATIONS CHIEF	RUSS LONG		BRANCH DIRECTOR	RUSS COPP WILLIE BRANSON (T)		
PLANNING OPERATIONS	JAYSON COIL KYLE COWAN (T)		DIVISION/GROUP SUPERVISOR	KURT LARUE		
AIR ATTACK SUPERVISOR	RICH WEBSTER		SAFETY OFFICER	TOM HUDSON GREG ARKLE (T)		
5. Resources Assigned this Period						
Strike Team / Task Force / Resource Designator	LWD	Leader	Number Persons	Drop Off PT./Time	Pick Up PT./Time	
HC1 PALOMAR HOT SHOTS C-10119	09/09	JOSE ORTEGA	18	MOLERA/0700	MOLERA/1900	
HC1 ARROYO GRANDE C-10159	09/11	MICHAEL HICKEY	20	MOLERA/0700	MOLERA/1900	
6. Control Operations/Work Assignments:						
<p>TASK: Coordinate with divisions on developing firing plan and associated strategies.</p> <p>PURPOSE: To contain fire within control lines and protect infrastructure within fire area.</p> <p>END STATE: Firing operations were successful and all control lines held the fire.</p>						
7. Special Instructions:						
<p>The Communications Plan is complex; please review the ICS 205 with all Division personnel.</p> <p>DIVS, TFL, and HEQB must account for & certify all hired equipment shift tickets during the operational period.</p> <p>Use headlights, slow down, assume there is a vehicle around each corner.</p> <p>Division Supervisors: Effective today the following fire apportionment validation process will be to call Dave Dukart at (805) 698-2541 between 0830-1100.</p>						
8. Division/Group Communication Summary						
Function	Channel	RX Frequency N/W	RX Tone/NAC	TX Frequency N/W	TX Tone/NAC	Mode
TACTICAL	11	151.2575N	192.8	151.2575N	192.8	A
MEDICAL	15	156.0750N	156.7	156.0750N	156.7	A
AIR TO GROUND	14	159.2700N	192.8	159.2700N	192.8	A
EMERGENCY	16	168.6250N		168.6250N	110.9	A
9. Prepared By (Resource Unit Leader)			Approved By (Planning Section Chief)		Date	Time
JULIE VORACHEK			PETER BUTTERI		08/29/2016	1800

Division/Group Assignment List (ICS 204 WF)

1. Incident Name:			3.			
SOBERANES			VII / VIII	MOLERA STAGING		
2. Operational Period:						
Date/Time From: 08/30/2016 0700 TUE			Date/Time To: 08/31/2016 0700 WED			
4. Operations Personnel						
OPERATIONS CHIEF	RUSS LONG		BRANCH DIRECTOR	RUSS COPP WILLIE BRANSON (T)		
PLANNING OPERATIONS	JAYSON COIL KYLE COWAN (T)		DIVISION/GROUP SUPERVISOR			
AIR ATTACK SUPERVISOR	RICH WEBSTER		SAFETY OFFICER	TOM HUDSON GREG ARKLE (T)		
5. Resources Assigned this Period						
Strike Team / Task Force / Resource Designator	LWD	Leader	Number Persons	Drop Off PT./Time	Pick Up PT./Time	
6. Control Operations/Work Assignments:						
Add Resources as Needed.						
7. Special Instructions:						
Use headlights. Slow down. Assume there is a vehicle around each corner. Division Supervisors: Effective today, the following fire apportionment validation process will be to call Dave Dukart at (805) 698-2541 between 0830-1100.						
8. Division/Group Communication Summary						
Function	Channel	RX Frequency N/W	RX Tone/NAC	TX Frequency N/W	TX Tone/NAC	Mode
TACTICAL	12	159.4725N	156.7	159.4725N	156.7	A
MEDICAL	15	156.0750N	156.7	156.0750N	156.7	A
AIR TO GROUND	14	159.2700N	192.8	159.2700N	192.8	A
EMERGENCY	16	168.6250N		168.625N	110.9	A
9. Prepared By (Resource Unit Leader)			Approved By (Planning Section Chief)		Date	Time
JODI RIST			PETER BUTTERI		08/29/2016	1800

Division/Group Assignment List (ICS 204 WF)

1. Incident Name:		3.				
SOBERANES		VII/VIII		O/P		
2. Operational Period:						
Date/Time From: 08/30/2016 0700	TUE	Date/Time To: 08/31/2016 0700	WED			
4. Operations Personnel						
OPERATIONS CHIEF	RUSS LONG	BRANCH DIRECTOR				
PLANNING OPERATIONS	JAYSON COIL KYLE COWAN (T)	DIVISION/GROUP SUPERVISOR				
AIR ATTACK SUPERVISOR	RICH WEBSTER	SAFETY OFFICER		TOM HUDSON GREG ARKLE (T)		
5. Resources Assigned this Period						
Strike Team / Task Force / Resource Designator	LWD	Leader	Number Persons	Drop Off PT./Time	Pick Up PT./Time	
UNSTAFFED						
6. Control Operations/Work Assignments:						
7. Special Instructions:						
8. Division/Group Communication Summary						
Function	Channel	RX Frequency N/W	RX Tone/NAC	TX Frequency N/W	TX Tone/NAC	Mode
TACTICAL	8	168.0500N		168.0500N		A
MEDICAL	15	156.0750N	156.7	156.0750N	156.7	A
AIR TO GROUND TAC	14	159.2700N	192.8	159.2700N	192.8	A
EMERGENCY	16	168.6250N		168.6250N	110.9	A
9. Prepared By (Resource Unit Leader)		Approved By (Planning Section Chief)		Date	Time	
JULIE VORACHEK		PETER BUTTERI		08/29/2016	1800	

Division/Group Assignment List (ICS 204 WF)

1. Incident Name:			3.			
SOBERANES			VII & VIII		UU	
2. Operational Period:						
Date/Time From: 08/30/2016 0700 TUE		Date/Time To: 08/31/2016 0700 WED				
4. Operations Personnel						
OPERATIONS CHIEF		RUSS LONG		BRANCH DIRECTOR		RUSSELL COPP WILLIE BRANSON (T)
PLANNING OPERATIONS		JAYSON COIL KYLE COWAN (T)		DIVISION/GROUP SUPERVISOR		MARK JOHNSON JOHNNY VILLA (T)
AIR ATTACK SUPERVISOR		RICH WEBSTER		SAFETY OFFICER		TOM HUDSON GREG ARKLE (T)
5. Resources Assigned this Period						
Strike Team / Task Force / Resource Designator		LWD	Leader	Number Persons	Drop Off PT./Time	Pick Up PT./Time
HC1 MILL CREEK HOTSHOTS C-10160		09/12	JOHN ELLISON	20	MOLERA/0700	MOLERA /1900
ENG6 OVD 3141 E-10036			CRAIG BUNCE	3	MOLERA/0700	MOLERA /1900
WT2 DOC'S E-10129			NATHAN DUNHAM	1	MOLERA/0700	MOLERA /1900
WT2 GOLDEN STATE E-492			RICHARD CARVALHO	1	MOLERA/0700	MOLERA /1900
WT2 JARDINE'S E-10068			PAUL HERMAN	1	MOLERA/0700	MOLERA /1900
MAS BORDGES TIMBER E-10395			CODY FIDLETON	1	MOLERA/0700	MOLERA /1900
MAS BORDGES TIMBER #2 E-10396			TIM BORDGES	1	MOLERA/0700	MOLERA /1900
MAS WINNINGHAM FOREST MGMT INC E-10305			SCOTT VELASCO	1	MOLERA/0700	MOLERA /1900
MAS WINNINGHAM FOREST MGMT INC E-10306			ADAM LUKE	1	MOLERA/0700	MOLERA /1900
HEQB O-10351		09/06	STEPHEN SMITH II	1	MOLERA/0700	MOLERA /1900
HEQB (T) O-10361		09/06	ROSALIO VASQUEZ	1	MOLERA/0700	MOLERA /1900
HEQB O-10407		09/07	GLEN RANKIN COLEY	1	MOLERA/0700	MOLERA /1900
HEQB (T) O-10400		09/07	DREW FORD	1	MOLERA/0700	MOLERA /1900
TFLD O-10326		09/06	SUNBEAR VIERRA	1	MOLERA/0700	MOLERA /1900
TFLD (T) O-10367		09/05	BRAD TAUSAN	1	MOLERA/0700	MOLERA /1900
SOFR O-1335		08/31	KEVIN MORRIS	1	MOLERA/0700	MOLERA /1900
EMPF O-10363		09/05	CHRISTOPHER GREGORY	1	MOLERA/0700	MOLERA /1900
EMPF VERGA O-10387		09/05	JUSTIN VERGA	1	MOLERA/0700	MOLERA /1900
EMPF KAY O-10388		09/05	NEVIN KAY	1	MOLERA/0700	MOLERA /1900
8. Division/Group Communication Summary						
Function	Channel	RX Frequency N/W	RX Tone/NAC	TX Frequency N/W	TX Tone/NAC	Mode
TACTICAL	7	168.6000N		168.6000N		A
MEDICAL	15	156.0750N	156.7	156.0750N	156.7	A
AIR TO GROUND	14	159.2700N	192.8	159.2700N	192.8	A
EMERGENCY	16	168.6250N		168.6250N	110.9	A
9. Prepared By (Resource Unit Leader)			Approved By (Planning Section Chief)		Date	Time
JULIE VORACHEK			PETER BUTTERI		08/29/2016	1800

Division/Group Assignment List (ICS 204 WF)

1. Incident Name:			3.			
SOBERANES			VII & VIII	UU		
2. Operational Period:						
Date/Time From:	Date/Time To:					
08/30/2016 0700 TUE	08/31/2016 0700 WED					
4. Operations Personnel						
OPERATIONS CHIEF	RUSS LONG		BRANCH DIRECTOR	RUSSELL COPP WILLIE BRANSON (T)		
PLANNING OPERATIONS	JAYSON COIL KYLE COWAN (T)		DIVISION/GROUP SUPERVISOR	MARK JOHNSON JOHNNY VILLA (T)		
AIR ATTACK SUPERVISOR	RICH WEBSTER		SAFETY OFFICER	TOM HUDSON GREG ARKLE (T)		
6. Control Operations/Work Assignments:						
<p>TASK: Scout and improve indirect line for firing operations. Prep structures within DIV UU.</p> <p>PURPOSE: Control fire activity along dozer lines, protect values at risk along Hwy 1.</p> <p>END STATE: Fire remains east of control lines in UU, is controlled, and no longer threatens structures or other values at risk along Hwy 1.</p>						
7. Special Instructions:						
<p>If ignition operations commence in DIV N, then DIV UU will not be staffed. If fire gets established in Pit Creek, DIV UU will not be staffed.</p> <p>The Communications Plan is complex; please review the ICS 205 with all Division personnel.</p> <p>Review and understand medical emergency evacuation plan.</p> <p>DIVS, TFL and HEQB must account for & certify all hired shift tickets during operational period.</p> <p>Springville to prepare to spike at H-16.</p> <p>Use headlights. Slow down. Assume there is a vehicle around each corner.</p> <p>Division Supervisors: Effective today the following fire apportionment validation process will be to call Dave Dukart at (805) 698-2541 between 0830-1100.</p>						
8. Division/Group Communication Summary						
Function	Channel	RX Frequency N/W	RX Tone/NAC	TX Frequency N/W	TX Tone/NAC	Mode
TACTICAL	7	168.6000N		168.6000N		A
MEDICAL	15	156.0750N	156.7	156.0750N	156.7	A
AIR TO GROUND	14	159.2700N	192.8	159.2700N	192.8	A
EMERGENCY	16	168.6250N		168.6250N	110.9	A
9. Prepared By (Resource Unit Leader)			Approved By (Planning Section Chief)		Date	Time
JULIE VORACHEK			PETER BUTTERI		08/29/2016	1800

Division/Group Assignment List (ICS 204 WF)

1. Incident Name:			3.				
SOBERANES			Branch:		Division/Group:		
2. Operational Period:			VII & VIII		SS		
Date/Time From: 08/30/2016 0700	TUE	Date/Time To: 08/31/2016 0700					WED
4. Operations Personnel							
OPERATIONS CHIEF		RUSS LONG		BRANCH DIRECTOR		RUSSELL COPP WILLIE BRANSON (T)	
PLANNING OPERATIONS		JAYSON COIL KYLE COWAN (T)		DIVISION/GROUP SUPERVISOR		EZRA STILES	
AIR ATTACK SUPERVISOR		RICH WEBSTER		SAFETY OFFICER		TOM HUDSON GREG ARKLE (T)	
5. Resources Assigned this Period							
Strike Team / Task Force / Resource Designator		LWD	Leader		Number Persons	Drop Off PT./Time	Pick Up PT./Time
ENG3 SNF 341 E-10238		09/06	CARLOS CABANAS		5	MOLERA/0700	MOLERA/1900
WT2 CNF 245 E-10199		09/03	NORMAN ODORICO		2	MOLERA/0700	MOLERA/1900
TFLD O-10355		09/05	BRIAN ROBINSON		1	MOLERA/0700	MOLERA/1900
TFLD O-10431		09/11	CLIFF MCCLURE		1	MOLERA/0700	MOLERA/1900
SOF2 O-10183		08/30	ROBERT MARTIN JR		1	MOLERA/0700	MOLERA/1900
SOF2 O-10544		09/08	KIM LEMKE		1	MOLERA/0700	MOLERA/1900
6. Control Operations/Work Assignments:							
<p>TASK: Continue to monitor and secure suppression efforts. PURPOSE: Contain fire activity along control lines, protecting structures and values at risk along Highway 1 and the Big Sur community. END STATE: All control lines successfully held fire with no infrastructure damage.</p>							
7. Special Instructions:							
<p>Look UP, be aware of hazard trees. Back haul excess equipment and trash. Use human repeaters for communications. Fire Plans: Ensure all line personnel in the division are notified and that the Go No Go checklist is utilized. The Communications plan is complex. Please review the ICS 205 with all Division personnel. DIVS, TFL and HEQB must account for & certify all hired equipment shift tickets during the operational period. Use headlights. Slow down. Assume there is a vehicle around each corner. Division Supervisors: Effective today the following fire apportionment validation process will be to call Dave Dukart at (805) 698-2541 between 0830-1100.</p>							
8. Division/Group Communication Summary							
Function	Channel	RX Frequency N/W	RX Tone/NAC	TX Frequency N/W	TX Tone/NAC	Mode	
TACTICAL	8	168.0500N		168.0500N		A	
MEDICAL	15	156.0750N	156.7	156.0750N	156.7	A	
AIR TO GROUND	14	159.2700N	192.8	159.2700N	192.8	A	
EMERGENCY	16	168.6250N		168.6250N	110.9	A	
9. Prepared By (Resource Unit Leader)			Approved By (Planning Section Chief)			Date	Time
JODI RIST			PETER BUTTERI			08/29/2016	1800

Division/Group Assignment List (ICS 204 WF)

1. Incident Name:				3.		
SOBERANES				VII & VIII	Division/Group: N	
2. Operational Period:						
Date/Time From: 08/30/2016 0700 TUE		Date/Time To: 08/31/2016 0700 WED				
4. Operations Personnel						
OPERATIONS CHIEF	RUSS LONG			BRANCH DIRECTOR	RUSS COPP WILLIE BRANSON (T)	
PLANNING OPERATIONS	JAYSON COIL KYLE COWAN (T)			DIVISION/GROUP SUPERVISOR	PATRICK MOORE BILLY MCCALL (T)	
AIR ATTACK SUPERVISOR	RICH WEBSTER			SAFETY OFFICER	TOM HUDSON GREG ARKLE (T)	
5. Resources Assigned this Period						
Strike Team / Task Force / Resource Designator	LWD	Leader	Number Persons	Drop Off PT./Time	Pick Up PT./Time	
HC2I KNF SALMON RIVER 4 C-10059	09/01	WILLIAM ROBINSON	19	MOLERA /0700	MOLERA/1900	
HC2I LOST RIVER C-10114	09/03	DAVID DELANEY	20	MOLERA /0700	MOLERA/1900	
HC2 MP FORESTRY C-10091	08/31	ENRIQUE MORENO	20	MOLERA /0700	MOLERA/1900	
ENG S/T T3 1617C E-10266	09/06	LUIS DOZAL	15	MOLERA /0700	MOLERA/1900	
ENG6 AZ-KNF 611 E-10076	09/04	ARIC RASMUSSEN	4	MOLERA /0700	MOLERA/1900	
DOZ2 PVT HERTZIG E-215		JOHN HERZIG	2	MOLERA /0700	MOLERA/1900	
WTS2 ALGERINE WEST E-10392		MONTE WEST	1	MOLERA /0700	MOLERA/1900	
WTS2 WATER BOYS E-10302		JEFF PECKA	1	MOLERA /0700	MOLERA/1900	
WTS2 JARDINE'S WT2 E-10092		MIKE JARDINE	1	MOLERA /0700	MOLERA/1900	
WTS2 CUTTING EDGE CONSTRUCTION E-10394	09/07	PHIL BAUMAN	1	MOLERA /0700	MOLERA/1900	
WTS2 BAY AREA E-10127		ANGEL JONES	1	MOLERA /0700	MOLERA/1900	
WTS2 BENNETT E-10130		JONATHON ZAVALA	1	MOLERA /0700	MOLERA/1900	
GRD ROEN E-10300		LENNY BERTAGNOLLI	1	MOLERA /0700	MOLERA/1900	
HEQB O-10373	09/07	TANNER GREENE	1	MOLERA /0700	MOLERA/1900	
HEQB (T) O-10402	09/07	CODY SMALLWOOD	1	MOLERA /0700	MOLERA/1900	
HEQB O-10372	09/07	MICHAEL FRANK	1	MOLERA /0700	MOLERA/1900	
HEQB (T) O-10399	09/07	RANDALL BAREFOOT	1	MOLERA /0700	MOLERA/1900	
FFT1 O-10539	09/09	ALEX PEREZ	1	MOLERA /0700	MOLERA/1900	
FOBS O-139		MARK ENGLAND	1	MOLERA /0700	MOLERA/1900	
8. Division/Group Communication Summary						
Function	Channel	RX Frequency N/W	RX Tone/NAC	TX Frequency N/W	TX Tone/NAC	Mode
TACTICAL	6	168.2000N		168.2000N		A
MEDICAL	15	156.0750N	156.7	156.0750N	156.7	A
AIR TO GROUND TAC	14	159.2700N	192.8	159.2700N	192.8	A
EMERGENCY	16	168.6250N		168.6250N	110.9	A
9. Prepared By (Resource Unit Leader)			Approved By (Planning Section Chief)		Date	Time
JODI RIST			PETER BUTTERI		08/29/2016	1800

Division/Group Assignment List (ICS 204 WF)

1. Incident Name:			3.			
SOBERANES			Branch:		Division/Group:	
2. Operational Period:			VII & VIII		N	
Date/Time From: 08/30/2016 0700 TUE		Date/Time To: 08/31/2016 0700 WED				
4. Operations Personnel						
OPERATIONS CHIEF		RUSS LONG		BRANCH DIRECTOR		
				RUSS COPP WILLIE BRANSON (T)		
PLANNING OPERATIONS		JAYSON COIL KYLE COWAN (T)		DIVISION/GROUP SUPERVISOR		
				PATRICK MOORE BILLY MCCALL (T)		
AIR ATTACK SUPERVISOR		RICH WEBSTER		SAFETY OFFICER		
				TOM HUDSON GREG ARKLE (T)		
5. Resources Assigned this Period						
Strike Team / Task Force / Resource Designator		LWD	Leader	Number Persons	Drop Off PT./Time	Pick Up PT./Time
FOBS O-10333		09/06	MICHAEL PETRUNCIO	1	MOLERA /0700	MOLERA/1900
SOF2 O-10418		09/08	CHRISTOPHER FOGLE	1	MOLERA /0700	MOLERA/1900
SOFR (T) O-10184		08/30	STEWART ROBERTSON	1	MOLERA /0700	MOLERA/1900
SOFR (T) O-10468		09/08	KYLE OWEN	1	MOLERA /0700	MOLERA/1900
EMTF O-1423		09/02	MICHAEL SGRO	1		
EMPF O-10470		09/09	BOBBY WEIST	1	MOLERA /0700	MOLERA/1900
EMTF O-10450		09/07	JUSTIN SIMMONS	1	MOLERA /0700	MOLERA/1900
REMS XRI 1 O-10604		08/30	SCOTT WILSON	2	MOLERA /0700	MOLERA/1900
6. Control Operations/Work Assignments:						
<p>If fire becomes established west of the North Coast Ridge Road and can not be contained with resources on hand, an evacuation order for Partington Subdivision will be initiated.</p> <p>TASK: Scout and improve indirect line for firing operations. Optimize weather conditions to ensure successful firing operations. PURPOSE: Contain fire activity along control lines, protecting structures and values at risk along Highway 1. END STATE: All control lines successfully held fire with no infrastructure damage.</p>						
7. Special Instructions:						
<p>Please keep all Dozer lines out of Highway 1 viewshed. The Communications Plan is complex; please review the ICS 205 with all Division personnel. Use headlights. Slow down. Assume there is a vehicle around each corner. Look up. Be aware of hazard trees. Review and understand medical emergency evacuation plan. DIVS, TFL and HEQB must account for & certify all hired equipment shift tickets during operational period. Once ignition begins, only critical resources will be south along North Ridge Rd in front of the ignition group. If the main fire gets established on the south facing slope and Logwood drainage, only critical resources will be in unburned areas. Division Supervisors: Effective today the following fire apportionment validation process will be to call Dave Dukart at (805) 698-2541 between 0830-1100.</p>						
8. Division/Group Communication Summary						
Function	Channel	RX Frequency N/W	RX Tone/NAC	TX Frequency N/W	TX Tone/NAC	Mode
TACTICAL	6	168.2000N		168.2000N		A
MEDICAL	15	156.0750N	156.7	156.0750N	156.7	A
AIR TO GROUND TAC	14	159.2700N	192.8	159.2700N	192.8	A
EMERGENCY	16	168.6250N		168.6250N	110.9	A
9. Prepared By (Resource Unit Leader)			Approved By (Planning Section Chief)		Date	Time
JODI RIST			PETER BUTTERI		08/29/2016	1800

Division/Group Assignment List (ICS 204 WF)

1. Incident Name:			3.			
SOBERANES			Branch:		Division/Group:	
2. Operational Period:			VII & VIII		N	
Date/Time From: 08/30/2016 0700 TUE	Date/Time To: 08/31/2016 0700 WED					
4. Operations Personnel						
OPERATIONS CHIEF		RUSS LONG		BRANCH DIRECTOR		RUSS COPP WILLIE BRANSON (T)
PLANNING OPERATIONS		JAYSON COIL KYLE COWAN (T)		DIVISION/GROUP SUPERVISOR		PATRICK MOORE BILLY MCCALL (T)
AIR ATTACK SUPERVISOR		RICH WEBSTER		SAFETY OFFICER		TOM HUDSON GREG ARKLE (T)
7. Special Instructions:						
Utilize Ch. 12 (V-Tac 14) for traffic control on North Coast Ridge Road.						
8. Division/Group Communication Summary						
Function	Channel	RX Frequency N/W	RX Tone/NAC	TX Frequency N/W	TX Tone/NAC	Mode
TACTICAL	6	168.2000N		168.2000N		A
MEDICAL	15	156.0750N	156.7	156.0750N	156.7	A
AIR TO GROUND TAC	14	159.2700N	192.8	159.2700N	192.8	A
EMERGENCY	16	168.6250N		168.6250N	110.9	A
9. Prepared By (Resource Unit Leader)		Approved By (Planning Section Chief)			Date	Time
JODI RIST		PETER BUTTERI			08/29/2016	1800

Division/Group Assignment List (ICS 204 WF)

1. Incident Name:			3.			
SOBERANES			Branch:		Division/Group:	
2. Operational Period:			TORO IA/STAGING			
Date/Time From: 08/30/2016 0700 TUE	Date/Time To: 08/31/2016 0700 WED					
4. Operations Personnel						
OPERATIONS CHIEF		RUSS LONG		BRANCH DIRECTOR		
PLANNING OPERATIONS		JAYSON COIL KYLE COWAN (T)		DIVISION/GROUP SUPERVISOR		
AIR ATTACK SUPERVISOR		RICH WEBSTER		SAFETY OFFICER		
				JAMES ROURKS JASON LAGO (T)		
				TOM HUDSON GREG ARKLE (T)		
5. Resources Assigned this Period						
Strike Team / Task Force / Resource Designator	LWD	Leader	Number Persons	Drop Off PT./Time	Pick Up PT./Time	
TASK FORCE #4	09/07	PATRICK WALKER O-10585	1	TORO/0700	TORO/1900	
ENG3 THREE POINTS E-10275	09/09	WILLIAM BARBER	4	TORO/0700	TORO/1900	
ENG 3 SUNDANCE E-10268	09/09	DAVID BUCKMASTER	3	TORO/0700	TORO/1900	
ENG6 E-671	09/09	JAY RUDE	3	TORO/0700	TORO/1900	
ENG3 CHRISTOPHER KOHZ E-10272	09/07	NICK SHILL	5	TORO/0700	TORO/1900	
ENG 6 BRUSH 911 E-10287	09/08	JERRY MCGRAW	2	TORO/0700	TORO/1900	
ENG6 DOUBLE D FIRE E-10252	09/08	DUANE DEARBORN	3	TORO/0700	TORO/1900	
WTS2 DICK ALLEN WATER TRUCKS E-10159	09/26	DICK ALLEN	1	TORO/0700	TORO/1900	
WTS2 PETERSON FARMS E-10160	09/26	JACK HUNT	1	TORO/0700	TORO/1900	
TASK FORCE #5	09/09	TIM CARPENTER O-10430	1	TORO/0700	TORO/1900	
ENG6 MORA BRUSH #1 E-10245	09/09	MICHAEL LUJAN	3	TORO/0700	TORO/1900	
ENG6 EAGER 1660 E-10249	09/09	FRANK ADAMS	3	TORO/0700	TORO/1900	
ENG6 J3 ENG#8 E-10283	09/08	DARREN NAMINJHA	3	TORO/0700	TORO/1900	
ENG6 SOUTHERN ROCKY 139 E-10255	09/09	TOMMY DIAZ	4	TORO/0700	TORO/1900	
ENG SOUTHERN ROCKY137 E-10259	09/09	TIM LATHAN	3	TORO/0700	TORO/1900	
STEN O-1478	09/09	ALAN HUSKINS	1	TORO/0700	TORO/1900	
WTS2 PVT 49ER E-10437	09/12	DICK SASSER	2	TORO/0700	TORO/1900	
WTS2 E-10161	09/10	GREG HOLT	1	TORO/0700	TORO/1900	
8. Division/Group Communication Summary						
Function	Channel	RX Frequency N/W	RX Tone/NAC	TX Frequency N/W	TX Tone/NAC	Mode
TACTICAL	7	168.2500N		168.2500N		A
MEDICAL	15	156.0750N	156.7	156.0750N	156.7	A
AIR TO GROUND	14	159.2700N	192.8	159.2700N	192.8	A
EMERGENCY	16	168.6250N		168.625N	110.9	A
9. Prepared By (Resource Unit Leader)			Approved By (Planning Section Chief)		Date	Time
JODI RIST			PETER BUTTERI		08/29/2016	1800

Division/Group Assignment List (ICS 204 WF)

1. Incident Name:			3.			
SOBERANES			Branch:		Division/Group:	
2. Operational Period:			TORO IA/STAGING			
Date/Time From: 08/30/2016 0700 TUE		Date/Time To: 08/31/2016 0700 WED				
4. Operations Personnel						
OPERATIONS CHIEF		RUSS LONG		BRANCH DIRECTOR		
PLANNING OPERATIONS		JAYSON COIL KYLE COWAN (T)		DIVISION/GROUP SUPERVISOR		JAMES ROURKS JASON LAGO (T)
AIR ATTACK SUPERVISOR		RICH WEBSTER		SAFETY OFFICER		TOM HUDSON GREG ARKLE (T)
5. Resources Assigned this Period						
Strike Team / Task Force / Resource Designator		LWD	Leader	Number Persons	Drop Off PT./Time	Pick Up PT./Time
ENG6 AZ E-484 E-10434		09/07	ELLEN LARSON (T)	4	TORO/0700	TORO/1900
TFLD O-10408		09/10	REID MARQUART	1	TORO/0700	TORO/1900
TFLD O-10435		09/09	LAN HECIMOVICH (T)	1	TORO/0700	TORO/1900
STEN O-10434		09/09	DWAYNE JOHNSON	1	TORO/0700	TORO/1900
STEN (T) O-10480		09/09	ART HATFIELD	1	TORO/0700	TORO/1900
6. Control Operations/Work Assignments:						
7. Special Instructions:						
STEN and TFLD be sure to have positive communications with your assigned resources. Use headlights. Slow down. Assume there is a vehicle around each corner.						
8. Division/Group Communication Summary						
Function	Channel	RX Frequency N/W	RX Tone/NAC	TX Frequency N/W	TX Tone/NAC	Mode
TACTICAL	7	168.2500N		168.2500N		A
MEDICAL	15	156.0750N	156.7	156.0750N	156.7	A
AIR TO GROUND	14	159.2700N	192.8	159.2700N	192.8	A
EMERGENCY	16	168.6250N		168.625N	110.9	A
9. Prepared By (Resource Unit Leader)			Approved By (Planning Section Chief)		Date	Time
JODI RIST			PETER BUTTERI		08/29/2016	1800

Division/Group Assignment List (ICS 204 WF)

1. Incident Name:				3.			
SOBERANES				Branch:		Division/Group:	
2. Operational Period:				NIGHT		N/O/P	
Date/Time From: 08/30/2016 0700 TUE		Date/Time To: 08/31/2016 0700 WED					
4. Operations Personnel							
OPERATIONS CHIEF		RUSS LONG		BRANCH DIRECTOR		ROBERT BERTOLINA	
PLANNING OPERATIONS		JAYSON COIL KYLE COWAN (T)		DIVISION/GROUP SUPERVISOR		BRIAN PONTES	
AIR ATTACK SUPERVISOR		RICH WEBSTER		SAFETY OFFICER		TOM HUDSON TOM ARKLE (T)	
5. Resources Assigned this Period							
Strike Team / Task Force / Resource Designator		LWD	Leader	Number Persons	Drop Off PT./Time	Pick Up PT./Time	
HC T2IA MS STATE #1 C-10092		09/05	PATRICK WILLIAMS	20	MOLERA/1900	MOLERA/0700	
ENG3 AZ E-41 E-10242		09/02	ERNESTO MANZANEDO	3	MOLERA/1900	MOLERA/0700	
ENG3 E-26 E-10239		09/07	ARLANDO LEYVA	4	MOLERA/1900	MOLERA/0700	
ENG3 - ANF 14 E-10267		09/07	EDUARDO CHACON	5	MOLERA/1900	MOLERA/0700	
ENG3 AFD E317 E-10240		09/01	CHRISTIAN MEE	4	MOLERA/1900	MOLERA/0700	
ENG3 CA-CNF 331 E-10244		08/31	DAVID ESPINOZA	5	MOLERA/1900	MOLERA/0700	
ENG3 CA-STF 342 E-10236		09/08	MICHAEL SCHEU	5	MOLERA/1900	MOLERA/0700	
ENG3 CA-STF 344 E-10237		09/08	JUSTIN NASH	5	MOLERA/1900	MOLERA/0700	
ENG3 AZ-SUM UNIT 24 E-10271		09/08	PRESTON SLAYTON	3	MOLERA/1900	MOLERA/0700	
ENG6 AZ-GAD BR-241 E-10264		09/08	JEFF TODD	3	MOLERA/1900	MOLERA/0700	
WTT2 CA-SQF 2 E-10198		09/03	JOSE ANDRADE	2	MOLERA/1900	MOLERA/0700	
STEN O-10432		09/10	WILL HILL	1	MOLERA/1900	MOLERA/0700	
SOF2 O-10543		09/09	JEFF SMITH (T)	1	MOLERA/1900	MOLERA/0700	
EMPF O-10598		09/03	LORI E EINEM	1	MOLERA/1900	MOLERA/0700	
EMPF O-10447		09/07	JUSTIN REYES	1	MOLERA/1900	MOLERA/0700	
EMPF E-10402		09/11	GARY FORD	1	MOLERA/1900	MOLERA/0700	
EMTF E-10410		09/11	REBECCA JOY	1	MOLERA/1900	MOLERA/0700	
6. Control Operations/Work Assignments:							
8. Division/Group Communication Summary							
Function	Channel	RX Frequency N/W	RX Tone/NAC	TX Frequency N/W	TX Tone/NAC	Mode	
TACTICAL	8	168.0500N		168.0500N		A	
MEDICAL	15	156.0750N	156.7	156.0750N	156.7	A	
AIR TO GROUND	14	159.2700N	192.8	159.2700N	192.8	A	
EMERGENCY	16	168.6250N		168.625N	110.9	A	
9. Prepared By (Resource Unit Leader)			Approved By (Planning Section Chief)			Date	Time
JUSTIN QUERY			PETER BUTTERI			08/29/2016	1800

Division/Group Assignment List (ICS 204 WF)

1. Incident Name:			3.			
SOBERANES			NIGHT	Division/Group: N/O/P		
2. Operational Period:						
Date/Time From:	TUE	Date/Time To:	WED			
08/30/2016 0700		08/31/2016 0700				
4. Operations Personnel						
OPERATIONS CHIEF	RUSS LONG		BRANCH DIRECTOR	ROBERT BERTOLINA		
PLANNING OPERATIONS	JAYSON COIL KYLE COWAN (T)		DIVISION/GROUP SUPERVISOR	BRIAN PONTES		
AIR ATTACK SUPERVISOR	RICH WEBSTER		SAFETY OFFICER	TOM HUDSON TOM ARKLE (T)		
6. Control Operations/Work Assignments:						
TASK: Monitor fire activity in assigned area.						
PURPOSE: To ensure adequate resources are allocated to protect values at risk.						
END STATE: Changes in fire location and potential are identified and communicated.						
7. Special Instructions:						
Please keep all Dozer lines out of Highway 1 viewshed.						
Use headlights. Slow down. Assume there is a vehicle around each corner. LOOK UP, be aware of hazard trees.						
Fire Plans: Ensure all line personnel in the division are notified and that the GO No GO checklist is utilized.						
The Communications Plan is complex. Please review the ICS 205 with all Division personnel.						
DIVS, TFLD, and HEQB must account for & certify all hired equipment shift tickets during the operational period.						
Please follow medical plan for medical emergencies. H-407 is available for night hoist operations.						
At 0001 hrs. all Divisions will contact DIVS N/O/P Murrin for any Branch needs.						
Division Supervisors: Effective today the following fire apportionment validation process will be to call Kris Armstrong at (661) 342-7297 between 0830-1100.						
Utilize Ch. 12 (V-Tac 14) for traffic control on North Coast Ridge Road.						
8. Division/Group Communication Summary						
Function	Channel	RX Frequency N/W	RX Tone/NAC	TX Frequency N/W	TX Tone/NAC	Mode
TACTICAL	8	168.0500N		168.0500N		A
MEDICAL	15	156.0750N	156.7	156.0750N	156.7	A
AIR TO GROUND	14	159.2700N	192.8	159.2700N	192.8	A
EMERGENCY	16	168.6250N		168.625N	110.9	A
9. Prepared By (Resource Unit Leader)			Approved By (Planning Section Chief)		Date	Time
JUSTIN QUERY			PETER BUTTERI		08/29/2016	1800

Division/Group Assignment List (ICS 204 WF)

1. Incident Name:			3.				
SOBERANES			Branch:		Division/Group:		
2. Operational Period:			I II VIII IX		BAER TEAM		
Date/Time From: 08/30/2016 0700 TUE		Date/Time To: 08/31/2016 0700 WED					
4. Operations Personnel							
OPERATIONS CHIEF		RUSS LONG		BRANCH DIRECTOR			
DIVISION/GROUP SUPERVISOR				AIR ATTACK SUPERVISOR		RICH WEBSTER	
SAFETY OFFICER							
5. Resources Assigned this Period							
Strike Team / Task Force / Resource Designator		LWD	Leader		Number Persons	Drop Off PT./Time	Pick Up PT./Time
BAER TEAM LEADER		09/05	BRAD RUST		1	CARMEL/0700	CARMEL/0700
BAER TEAM MEMBER		09/05	LUKE RUTTEN		1	CARMEL/0700	CARMEL/0700
BAER TEAM MEMBER		09/05	ERIC NICITA		1	CARMEL/0700	CARMEL/0700
BAER TEAM MEMBER		09/05	KELSHA ANDERSON		1	CARMEL/0700	CARMEL/0700
BAER TEAM MEMBER		09/05	ALLEN KING		1	CARMEL/0700	CARMEL/0700
BAER TEAM MEMBER		09/05	WILLIAM TRIPP		1	CARMEL/0700	CARMEL/0700
BEAR TEAM MEMBER		09/05	KEVIN COOPER		1	CARMEL/0700	CARMEL/0700
BAER TEAM MEMBER		09/05	JONATHAN SCHWARTZ		1	CARMEL/0700	CARMEL/0700
6. Control Operations/Work Assignments:							
7. Special Instructions:							
Check in an out with the Division you are in.							
8. Division/Group Communication Summary							
Function	Channel	RX Frequency N/W	RX Tone/NAC	TX Frequency N/W	TX Tone/NAC	Mode	
SEE THE	ICS 205	COMMUNICATIONS	PLAN				
9. Prepared By (Resource Unit Leader)			Approved By (Planning Section Chief)		Date	Time	
JAN PASSEK			PETER BUTTERI		08/29/2016	2030	

INCIDENT RADIO COMMUNICATIONS PLAN		Incident Name		Date/Time Prepared		Operational Period Date/Time			
BRANCHES III/IV & V (DHP radio Group 13)		8/29/16 1900HRS.		8/30-31/16 0700 - 0700					
Ch #	Function	Channel Name/Trunked Radio System Talkgroup	Assignment	RX Freq N or W	RX Tone/NAC	TX Freq N or W	Tx Tone/NAC	Mode A, D or M	Remarks
1	COMMAND	NIFC C35	ALL DIVISIONS	172.5500N		164.8625N	136.5	A	ALL Repeaters Linked
2	COMMAND	NIFC C33	ALL DIVISIONS	167.1500N		172.1375N	136.5	A	in Branches III/IV & V
3	COMMAND	NIFC C37	ALL DIVISIONS	163.0750N		172.7500N	136.5	A	
4	COMMAND	NIFC C43		163.1750N		173.6750N	136.5	A	C43 Repeater Removed
5	COMMAND	NIFC C8	ALL DIVISIONS	169.5375N		164.7125N	136.5	A	
6	TACTICAL	VTAC 12	M/AA/CJ/EE	154.4525N	156.7	154.4525N	156.7	A	
7	TACTICAL	NIFC T7	TORO IA, Staging	168.2500N		168.2500N		A	
8	TACTICAL	R5 T4	GG	166.5500N		166.5500N		A	
9	TACTICAL	R5 T6	FF	168.2375N		168.2375N		A	CONTINGENCY
10	TACTICAL	VFIRE 25	EAST STR GRP	154.2875N	156.7	154.2875N	156.7	A	
11	TACTICAL	CDF T1	EAST FIRING GRP	151.2575N	192.8	151.2575N	192.8	A	
12	TACTICAL	VTAC 11	J/K, II	151.1375N	156.7	151.1375N	156.7	A	
13	A/G CMD	A/G CMD	ALL DIVISIONS	159.4500N	192.8	159.4500N	192.8	A	
14	A/G TAC	A/G TAC	ALL DIVISIONS	159.2700N	192.8	159.2700N	192.8	A	
15	MEDICAL	CALCORD	ALL DIVISIONS	156.0750N	156.7	156.0750N	156.7	A	MEDICAL COORDINATION
16	EMERGENCY	GUARD	ALL DIVISIONS	168.6250N		168.6250N	110.9	A	AIR GUARD
17									
18									
19									
20	EMERGENCY	GUARD	ALL DIVISIONS	168.6250N		168.6250N	110.9	A	Clone Ver. GUARD21

Prepared By (Communications Unit)

Lindsey Lien COML *Lindsey Lien COML*

Incident Location
5 MILES SOUTH OF CARMEL, GARRAPATA STATE PARK, MONTEREY CALIFORNIA

The convention calls for frequency lists to show four digits after the decimal place, followed by either an "N" or a "W", depending on whether the frequency is narrow or wide band. Mode refers to either "A" or "D" indicating analog or digital (e.g. Project 25) or "M" indicating mixed mode. All channels are shown as if programmed in a control station, mobile or portable radio. Repeater and base stations must be programmed with the Kx and Ix reversed.

INCIDENT RADIO COMMUNICATIONS PLAN		Incident Name BRANCH VII/VIII (DHP radio Group 14)			Date/Time Prepared 8/29/16 1900HRS.	Operational Period Date/Time 8/30-31/16 0700 - 0700			
Ch #	Function	Channel Name/Trunked Radio System Talkgroup	Assignment	RX Freq N or W	RX Tone/NAC	TX Freq N or W	TX Tone/NAC	Mode A, D or M	Remarks
1	COMMAND	NIFC C10	ALL DIVISIONS	170.4125N		165.9625N	136.5	A	
2	COMMAND	NIFC C34	ALL DIVISIONS	170.0875N		162.1875N	136.5	A	
3	COMMAND	NIFC C40	ALL DIVISIONS	163.1500N		172.8125N	136.5	A	ALL REPEATERS LINKED
4	COMMAND	NIFC C38	ALL DIVISIONS	163.1250N		172.7750N	136.5	A	IN BRANCH VII/VIII
5	COMMAND	NIFC C21	ALL DIVISIONS	166.3125N		172.6750N	136.5	A	C21 Relocated south to Junipero Serra
6	TACTICAL	NIFC T2	N	168.2000N		168.2000N		A	
7	TACTICAL	NIFC T3	UU	168.6000N		168.6000N		A	
8	TACTICAL	NIFC T1	SS, O/P	168.0500N		168.0500N		A	N/O/P NIGHT
9	TACTICAL	VFIRE 26	BAER	154.3025N	156.7	154.3025N	156.7	A	
10	TACTICAL	SPEC A	BIG SUR STR GRP	151.1450N	192.8	151.1450N	192.8	A	
11	TACTICAL	CDF T1	BIG SUR FIRING GRP	151.2575N	192.8	151.2575N	192.8	A	
12	TACTICAL	VTAC 14	MOLERA STG	159.4725N	156.7	159.4725N	156.7	A	North Coast Ridge Road Traffic Control
13	A/G CMD	A/G CMD	ALL DIVISIONS	159.4500N	192.8	159.4500N	192.8	A	
14	A/G TAC	A/G TAC	ALL DIVISIONS	159.2700N	192.8	159.2700N	192.8	A	
15	MEDICAL	CALCORD	ALL DIVISIONS	156.0750N	156.7	156.0750N	156.7	A	MEDICAL COORDINATION
16	EMERGENCY	GUARD	ALL DIVISIONS	168.6250N		168.6250N	110.9	A	AIR GUARD
17									
18									
19									
20	EMERGENCY	GUARD	ALL DIVISIONS	168.6250N		168.6250N	110.9	A	Clone Ver. GUARD21

Prepared By (Communications Unit)
Lindsey Lien COML *Lindsey Lien COML*

Incident Location
5 MILES SOUTH OF CARMEL, GARRAPATA STATE PARK, MONTEREY CALIFORNIA

The convention calls for frequency lists to show four digits after the decimal place, followed by either an "N" or a "W", depending on whether the frequency is narrow or wide band. Mode refers to either "A" or "D" indicating analog or digital (e.g. Project 25) or "M" indicating mixed mode. All channels are shown as if programmed in a control station, mobile or portable radio. Repeater and base stations must be programmed with the KX and IX reversed.

INCIDENT RADIO COMMUNICATIONS PLAN		Incident Name			Date/Time Prepared		Operational Period Date/Time	
SUPPRESSION REPAIR (DPH RADIO GRP 15)		SUPPRESSION REPAIR (DPH RADIO GRP 15)			8/29/16 1900HRS.		8/30-31/16 0700 - 0700	
Ch #	Function	Channel Name/Trunked Radio System Talkgroup	Assignment	RX Freq N or W	RX Tone/NAC	TX Freq N or W	Tx Tone/NAC	Mode A, D or M
1	COMMAND	NIFC C4	ALL DIVISIONS	166.6125N		168.4000N	136.5	A
2	COMMAND	NIFC C11	ALL DIVISIONS	170.6875N		166.5750N	136.5	A
3	COMMAND							(C21 Repeater removed)
4								
5								
6	TACTICAL	VFIRE 24	SUPP RPR 1	154.2725N	156.7	154.2725N	156.7	A
7	TACTICAL	VFIRE 25	BAER	154.2875N	156.7	154.2875N	156.7	A
8	TACTICAL	VFIRE 26	SUPP RPR 6	154.3025N	156.7	154.3025N	156.7	A
9	TACTICAL	NIFC T5		166.7250N		166.7250N		A
10								
11								
12	TACTICAL	VTAC 14	STAGING	159.4725N	156.7	159.4725N	156.7	A
13	A/G CMD	A/G CMD	ALL DIVISIONS	159.4500N	192.8	159.4500N	192.8	A
14	A/G TAC	A/G TAC	ALL DIVISIONS	159.2700N	192.8	159.2700N	192.8	A
15	MEDICAL	CALCORD	ALL DIVISIONS	156.0750N	156.7	156.0750N	156.7	A
16	EMERGENCY	GUARD	ALL DIVISIONS	168.6250N		168.6250N	110.9	A
17								
18								
19								
20	EMERGENCY	GUARD	ALL DIVISIONS	168.6250N		168.6250N	110.9	A

Prepared By (Communications Unit)
 Lindsey Lien COML *Lindsey Lien COML*
 Incident Location
 5 MILES SOUTH OF CARMEL, GARRAPATA STATE PARK, MONTEREY CALIFORNIA

The convention calls for frequency lists to show four digits after the decimal place, followed by either an "N" or a "W", depending on whether the frequency is narrow or wide band. Mode refers to either "A" or "D" indicating analog or digital (e.g. Project 25) or "M" indicating mixed mode. All channels are shown as if programmed in a control station, mobile or portable radio. Repeater and base stations must be programmed with the KX and 1X reversed.



Soberanes Incident Contact List

Incident Command		Logistics(cont.)	
Incident Commander	Tom Kurth	907-590-3184	Ordering
Deputy Incident Commander	Tony Doty	907-978-3689	Ordering
Liaison Officer	Warner McGrew	805-886-1572	Ordering
Liaison Officer	Jim Butler	907-398-8866	Base Camp Manager
Human Resource Specialist	Andrea Cabida	707-330-9939	ICP Base Camp Manager
	Safety		Food Unit Leader
Safety Officer	Tom Hudson	907-240-1208	Ground Support - Molera
Asst. Safety Officer	Greg Arkle	907-707-9801	EQPM Transportation - Molera
	Information		EQPM Mechanic - Molera
Fire Information - General Hotline		831-204-0446	Security
Public Information Officer	Pete Buist	907-388-7204	
Public Information Officer (t)	Tim Mowry	907-590-4038	Planning
	Operations		831-484-9689
Operations Section Chief	Russ Long	907-388-9773	Planning Section Chief
Operations Section Chief (Planning)	Jason Coil	928-607-1419	Deputy Planning Section Chief
	Aviation		Planning Section Chief (t) [Molera]
Air Operations Branch Director	Bruce Wicks	530-906-2224	Resources
Deputy Air Operations Branch Director	Ken Bingham	541-921-0987	Resources
Air Support Group Supervisor	Teresa Williams	479-264-2031	Situation
Helibase	Curt Warner	805-478-1231	Documentation Unit
	Logistics		Demobilization
Logistics Unit		831-484-9688	Computer Technician
Logistics Section Chief	Jerri Webster	907-748-0180	Fire Behavior Analyst
Logistics Section Chief [Molera]	Janet Ladd	907-202-2354	Air Resource Advisor
Logistics Section Chief (t)	Rusty Hippchen	907-398-8113	Training Specialist
Supply Unit	John Hoch	907-590-3672	Training Specialist
Facilities	Richard Bidasolo	907-232-1551	
Communications Unit Leader	Lindsey Lien	907-388-3915	Finance
Soberanes Communications Unit (Primary)		831-484-9674	Finance Section Chief (Primary)
Soberanes Communications Unit (Secondary)		831-484-9693	Finance Section Chief (Secondary)
Ground Support	Darren Rathbun	907-250-6508	Comp/Claims
Ground Support Transportation (Primary)	Lana Campbell	209-206-3973	Time
Ground Support Transportation (Secondary)	Steve Knutson	541-880-8943	Equipment Time Recorder
Medical Unit Leader	Chuck Passek	907-382-5824	OES
			916-912-4685
			ext 77728

HEALTH AND SAFETY MESSAGE

SAFETY** starts with **YOU

We are **ALL** accountable for **SAFE** behaviors

INCIDENT: Soberanes

DATE: 8/30/16

Oper. Period: Day Shift

Major Hazards and Risks:

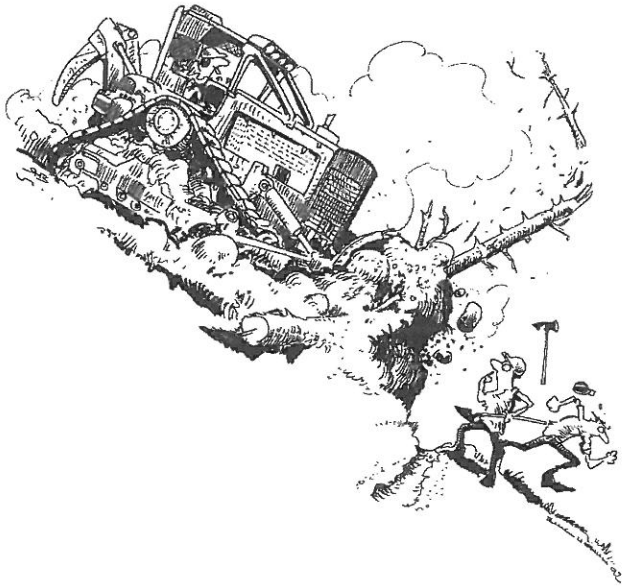
Working in the WUI: Review your IRPG for WUI Watch out Situations.

Driving: Be patient and mindful.

Fire Order of the Day – Retain control at all times

Narrative: Fire activity is picking up! Know where your resources are and what they are doing at all times. Maintain comms with adjoining divisions. Have a viable plan in place for emergencies. Look at the PACE model.

Watch Out Situation of the Day



5. UNINFORMED ON STRATEGY, TACTICS AND HAZARDS

Hazardous Materials Procedures

If you encounter outbuildings, vehicles and/or homes being threatened or destroyed by fire – remember: Hazardous materials may be stored, including agricultural or industrial chemicals, explosive substances, propane and other fuel tanks, plastics, etc.

If you encounter what you may suspect may be hazardous materials, generally:

Stay upwind, uphill and avoid smoke;

Isolate the area;

Warn others in the immediate area;

Notify your supervisor of the potential problem so trained specialists can evaluate and mitigate the situation;

If not properly trained and equipped – **do not** get involved.

Remember – If you don't know, don't go, it may blow!!

Incident Safety Officer: AK IMT1 Safety Team

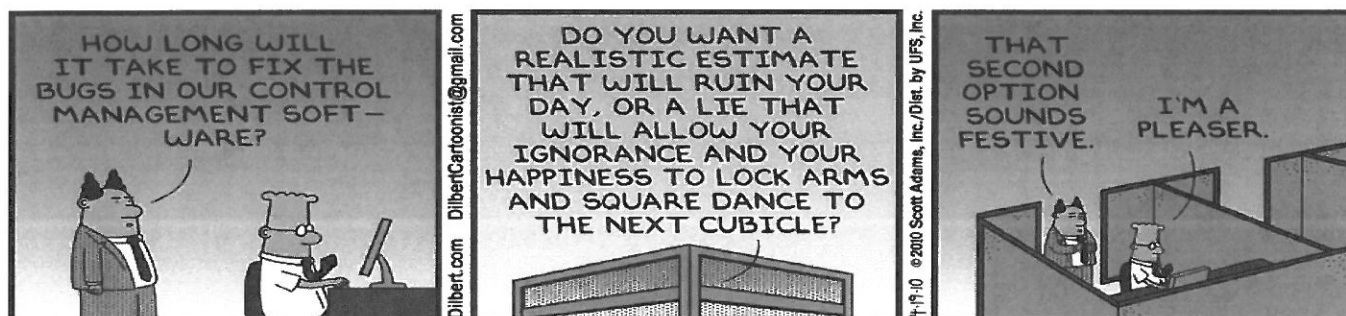
HUMAN RESOURCE MESSAGE

WATCH OUT SITUATIONS



1. People have never worked together and have not had enough time to scout out potential issues or size up each other for differences.
2. People are left in the dark due to poor communications and don't have clear goals or expectations.
3. People feel threatened by a supervisor and escape routes are not visible.
4. People are asked to work with unfamiliar weather and fire behavior, causing stress and/or fear to smolder within.
5. People are unfamiliar with local culture or beliefs, which may lead to lack of sensitive strategies or tactics for diversity or community differences.
6. Communications are not clear, instructions are lacking and individuals develop a creeping sense of frustration, which may build to torching relationships.

We would like to congratulate you all on a job well done and keep up the good work.



FINANCE

**Equipment Resources need to come to finance or call
520-780-8150**

E-1089 Tough Co. Equipment

E-10265 Benson Fire

C-10091 MP Forestry

C-10114 Lost River

Personal Resources need to come to finance or call

460-212-6587

Maylon Brown - Angel Fire Department

TIP FOR THE DAY

1. Please make sure your 'E' number is on EVERY shift ticket and CTR that you turn in.

08/30/2016

TENTATIVE RELEASE

SOBERANES US-CA-BEU-003422

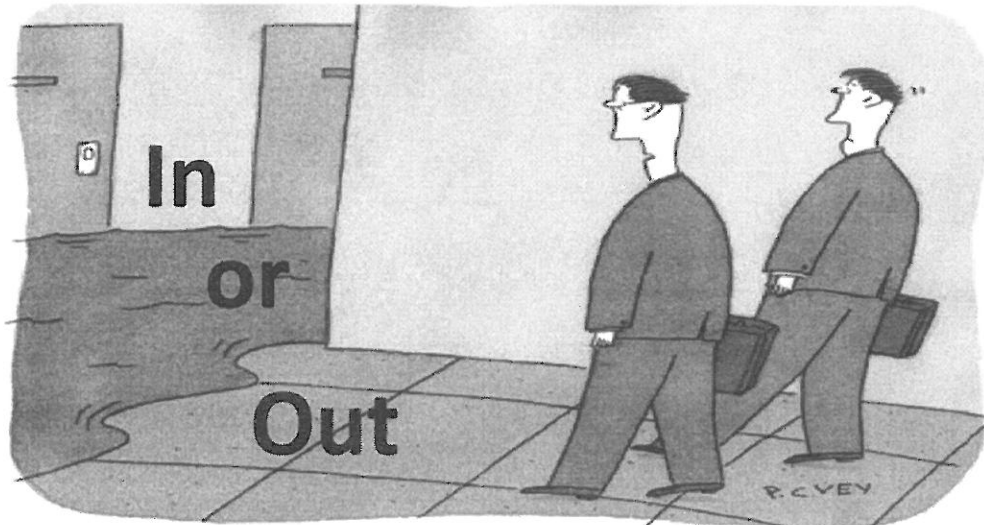
CREWS

C-10088 1200 (CC) CREW - CAMP - PLACER 1

OVERHEAD

O-10214	0630	(PIOF)	ENGLISH, JOSEPH E
O-1452	0700	(RESP)	ANDERSON, GUY
O-10064	0700	(SEC2)	HAPP, DANE ANTHONY
O-10201	0700	(ORDM)	HARRIS, KEN
O-10207	0700	(FEMP)	NUNEZ, DANIEL
O-1421	0700	(MISC)	REMS XST 2
O-10188	0700	(HECM)	WAKEFIELD, SHANE R
O-10185	0800	(SOFR)	PATINO, MARK
O-10163	0800	(SEC2)	PATTON, JAMES D
O-1215	1200	(EQPM)	CAMPBELL, LANA J
O-383	2000	(PTRC)	ARMSTRONG, KRISTINA

Training Specialist Message



"Let's not panic till we know whether it's coming in or going out."

All trainees come see the Training Specialist when you check in at the incident and before you check out.

Training is located at Toro ICP behind check-in if you can't make it before DMOB then use the QR code, URL, or give me a call.



<https://goo.gl/QByKiA>

Greg White

951-288-6048

Archaeological and Historical Sites Fireline Guidance for the SOBERANES Incident

One of the values we protect on our National Forest is Heritage Resources, this includes the preservation of Historic sites, Archaeological sites, and sites with traditional or sacred values.

Known archaeological sites are flagged for avoidance with blue flagging tape and yellow and black stripe flagging tape together. Do not compromise safety for the protection and preservation of archaeological and historic sites. When feasible and prudent:

1. ***Be on the lookout for prehistoric and historic sites.*** Prehistoric archaeological sites include boulders and bedrock with mortars and cupules, holes and grinding surfaces, temporary camps containing scatters of stone flakes, and deposits of dark brown to blackish soil with shell fragments (midden) occurring in layers or mounds on flat surfaces near sources of water, along coastal areas and wetlands, along ridges and saddles, and other areas suitable for camping. Historic sites include old wooden cabins, barns, corrals and other buildings, rock foundations and historic artifact scatters. These kinds of resources are often found in the same kinds of environmental settings as prehistoric camp sites.
2. Some archaeological and historical sites have not been flagged yet. If you observe artifacts, features, or sites, attempt to avoid dozing or driving through and/or parking on these sites, if feasible, especially with heavy equipment. Some sites can be protected through avoidance, or by carefully removing flammable materials adjacent to sensitive features, or by wrapping with protective fireproof fabric.
3. If you can't avoid sites, minimize disturbance as much as feasible, only clearing the surface to as minimal a depth and width as necessary.
4. Leave all artifacts in place. Some artifacts may have been intentionally placed for religious or ceremonial reasons.
5. When a site is discovered, flag it for visibility and report its location to a Division Supervisor. ***If feasible, plot locations of discovered resources on a map, and take a gps reading and photograph.*** Leave the information with an archaeologist (in the READ tent) so that sites can be relocated and protected during both the suppression and fire suppression repair phases of the Incident.
6. ***If you encounter a burial or human remains, cease work in the area immediately*** and contact the USFS Archaeologist. State law requires that the Archaeologist contact the Coroner, who will determine if the remains are part of a crime scene.

E 68 TO SALINAS

W 68 TO
MONTEREY &
MOLERA

HWY 68

TO W 68
TO E 68

PORTOLA DR.

MONTEREY
SALINAS HWY

ICP DETAIL SEE NEXT PAGE

HEAVY EQUIPMENT
PARKING
**GROUND
SUPPORT**
(Fuel, Transportation,
Weed Wash)

**IA
STAGING**

VENDOR
CAMPING

PIO

PIO

LAUNDRY
0600-2200

SECURITY

FOOT
PATH

PARKING

PARKING

3 2 1

ICP

OVERHEAD
PARKING

BRIEFING

ORDERING

SUPPLY
0600-2200

DAY
SLEEPING
COMMO

KITCHEN

4

MEDICAL

LUNCH

SHOWERS
0500-1200
1400-2300

PARKING

OVERHEAD SLEEPING

TORO CAMP

NOT TO SCALE



CREW/BUS
ENGINE PARKING

CREW
PARKING

CREW SLEEPING

HOSE
DROP OFF

- 1 - USFS
- 2 - READS/ARCHY /FIRE SUPPR./REPAIR
- 3 - COST APPORTIONMENT
- 4 - MED L

CCC CAMP

TO HELISPOT

OVERFLOW CAMPING

GIS

COPIES

CHECK IN / DEMOB

SITUATION UNIT

PERSONNEL TIME

FACILITIES / BCMG SECURITY

RESOURCES

RADIO CLONING

TRAINING DOCS

IT IMET & FBAN & ARA

OPS

FINANCE CHIEF COST COMP / CLAIMS

LOG. CHIEF LIASON

MAIN STREET

NOT TO SCALE

COMMO

AIR OPS COML

PROCUREMENT EQUIPMENT TIME

IC HR

SAFETY

PLANS CHIEF



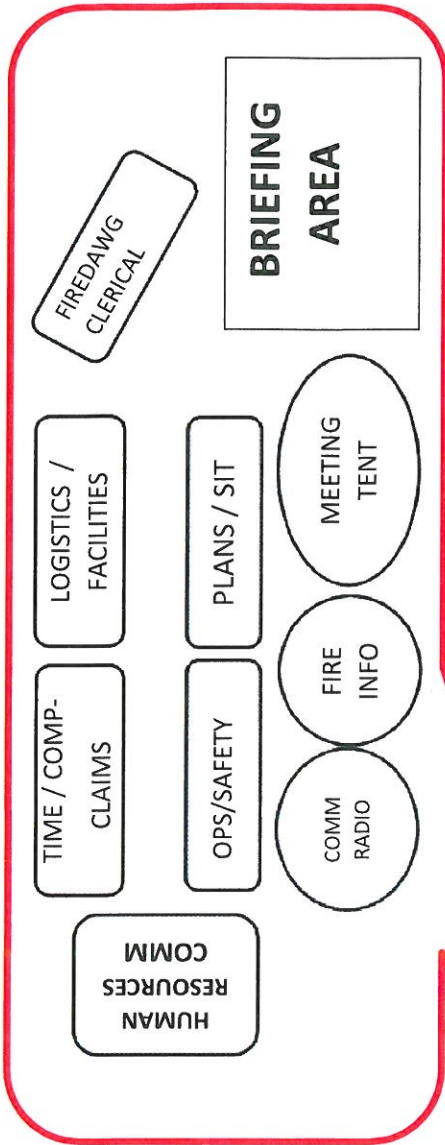
TORO PARK ICP MAP

Molera Camp

(@ Andrew Molera St. Park)

Approx. location:

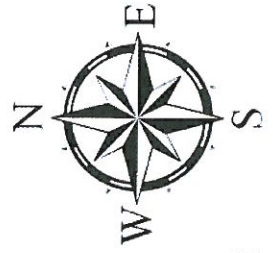
LAT 36° 17.33' N ; LONG 121° 50.80' W



Hwy 1

Enter

Exit



MAP NOT TO SCALE

Sleeping Trailers

ICP

Sleeping (CCC/OH)

PARKING

Sleeping

Sleeping Trailers

Lunch / Water

Supply

Chainsaw shop

Laundry

Shower

Kitchen

Sleeping

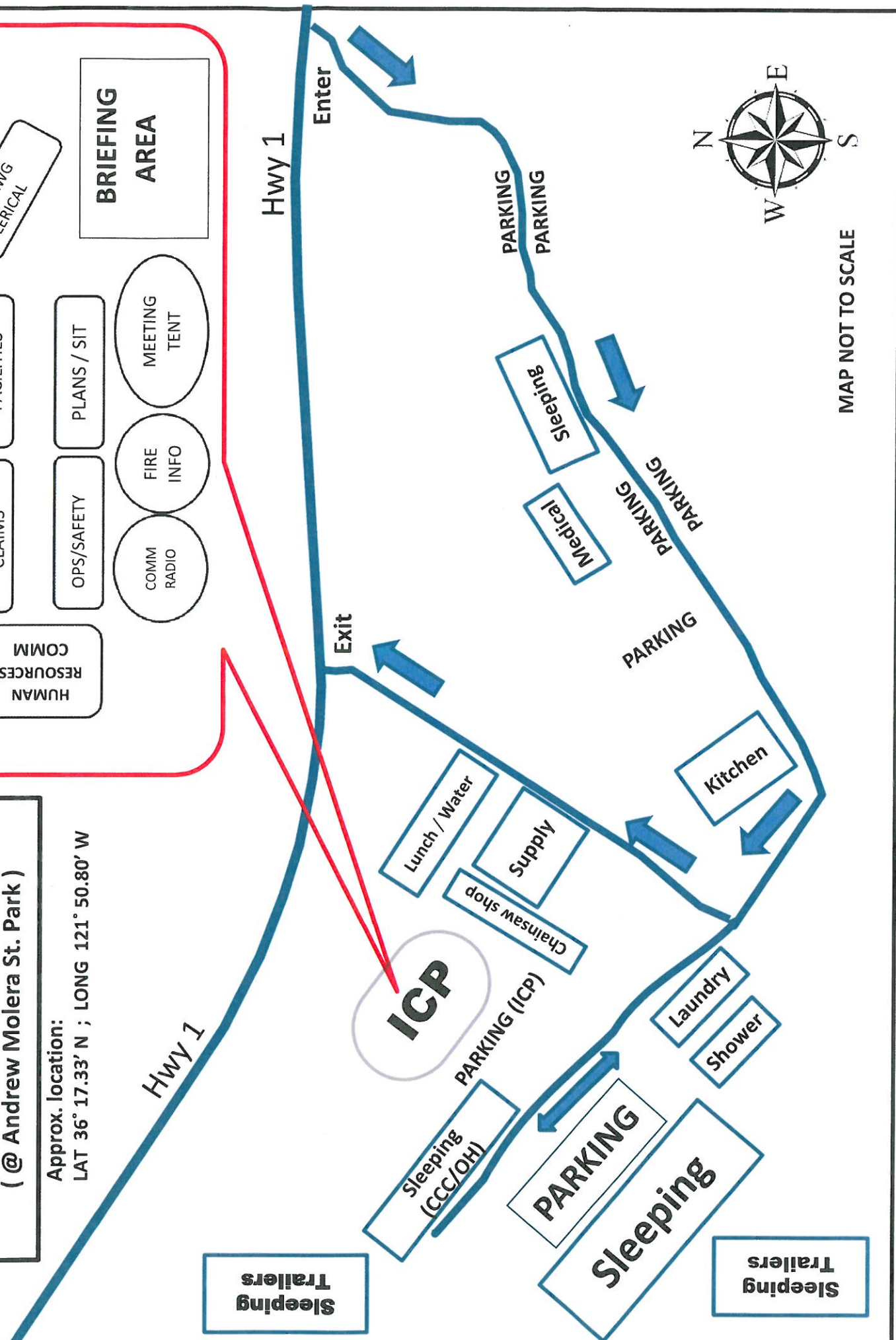
Medical

PARKING

PARKING

PARKING

PARKING



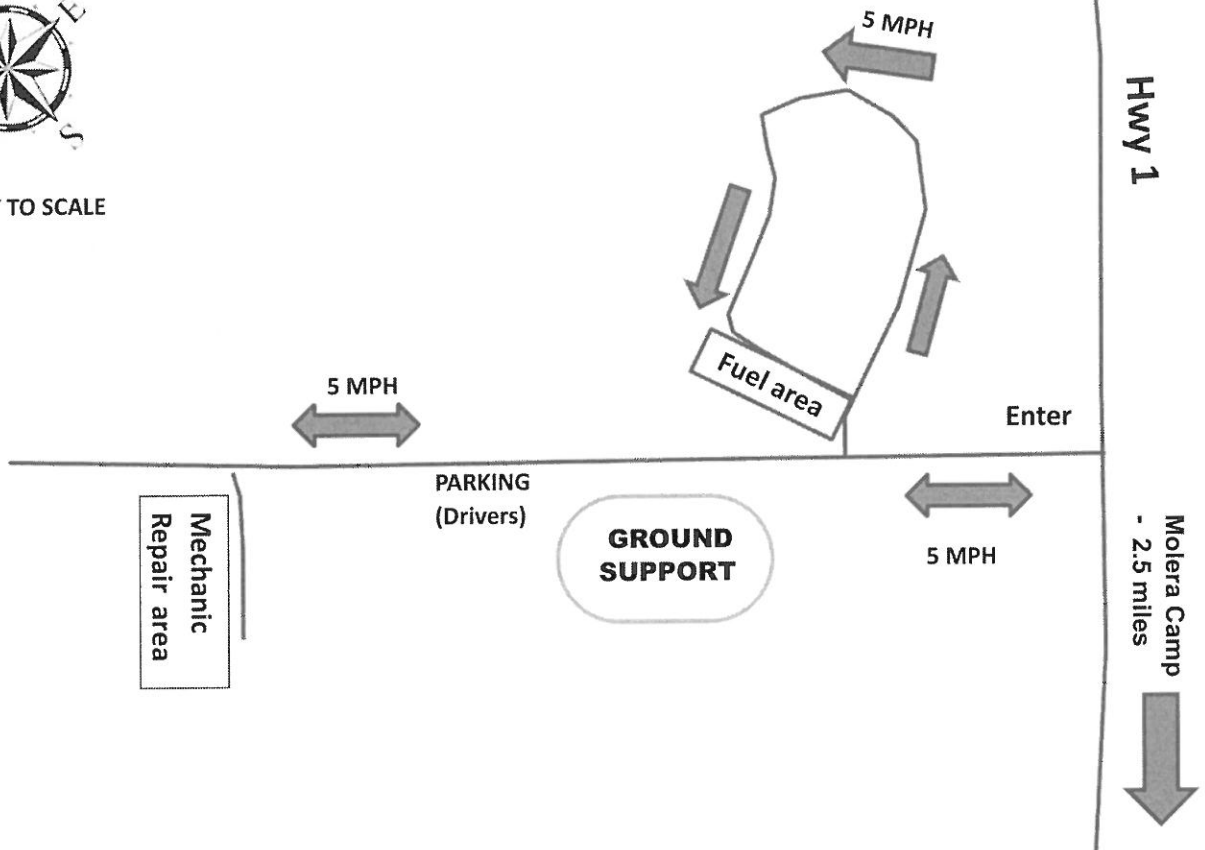
Molera Camp - Ground Support

(@ Point Sur Naval Facility)

Approx. location: LAT 36° 18.42' N ; LONG 121° 53.03' W



MAP NOT TO SCALE

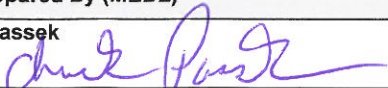



MEDICAL PLAN (ICS 206 WF)

1. Incident/Project Name		2. Operational Period					
Soberanes Incident		Date/Time 08-30-16 0700 to 8-31-16 0700					
3. Ambulance Services							
Name	Complete Address	Phone & EMS Frequency	Advanced Life Support (ALS) Yes No				
MCRFD M5563 **Incident Dedicated**	Rana Ranch Helibase 0700-1900	COMMAND	YES				
AMR M66 **Incident Dedicated**	Big Sur 0700-1900	COMMAND	YES				
AMR M24 / M35 / M36 **Non-dedicated**	Big Sur / Soledad / King City	9-1-1	YES				
FHL Fire Department **Non-dedicated**	Fort Hunter Liggett	9-1-1	YES				
4. Air Ambulance Services							
Name	Phone	Type of Aircraft & Capability					
KRN H407: Fort Hunter Liggett	COMMAND to Comm	NWG / Hoist - Helo (ALS) 0700-2100 - incident dedicated					
CHP H70: Paso Robles CHP	COMMAND to Comm	NWG / Daylight Hoist - Helo (ALS) 24 Hr - non -dedicated					
5. Hospitals							
Name Complete Address	GPS Datum – WGS 84 Coordinate Standard Degrees Decimal Minutes DD° MM.MMM' N - Lat DD° MM.MMM' W - Long		Travel Time Air Gnd	Phone	Helipad Yes No		Level of Care Facility
	Lat:	Long:			VHF:	Yes	
Natividad Medical Center 1441 Constitution BLVD Salinas, CA 93906	Lat: N 36.41.850 Long: 5W 121.38.070	VHF:	Will vary with patient location	831 755-4111	<input checked="" type="checkbox"/>	<input type="checkbox"/>	Level 2 Trauma Center Destination for TRAUMA
Santa Clara Valley MC 751 Bascom AVE San Jose, CA 95128	Lat: N 37.18.850 Long: 5W 121.56.050	VHF:	Will vary with patient location	408 885-5000	<input checked="" type="checkbox"/>	<input type="checkbox"/>	Level I Trauma Center Destination for BURNS
CHOMP 23625 Holman Highway Monterey, CA 93942	Lat: Long: VHF:		Will vary with patient location	831 624-5311	<input type="checkbox"/>	<input checked="" type="checkbox"/>	Destination for MEDICALS
MEE Memorial Hospital 300 Canal ST King City, CA	Lat: Long: VHF:		Will vary with patient location	831 385-6000	<input type="checkbox"/>	<input checked="" type="checkbox"/>	Destination for Camp Fort Hunter Liggett
SPECIAL MEDICAL INSTRUCTIONS	Camp & ICP Medical Emergencies 1.Call 9-1-1 2.Contact COMMUNICATIONS					FIRELINE Medical Emergencies 1.On scene Point of Contact will initiate Medical Incident Report (9-line) with COMMS on COMMAND 2. Contact Division Supervisor	

MEDICAL PLAN (ICS 206 WF)

6. Division Branch	Group Area Location Capability
<p>See Daily IAP Division Assignment Sheets for Medical Unit personnel locations</p>	
Left vacant for future use	
Left vacant for future use	
Left vacant for future use	

7. Name and Location	Camp Location(s)			
Toro – Frontline Medical Trailer	Point of contact	(530)375-7555		
	EMS Responders & Capability:	ALS		
	Equipment Available on Scene:	ALS		
Molera Medical Tent	Point of Contact:	Kay Brooks MEDL (850)259-0848 Elaine Fisher MEDL-t (407)453-0760		
	EMS Responders & Capability:	BLS		
	Equipment Available on Scene:	BLS		
Liggett Spike	Point of Contact	Line EMS in morning & night During day call 911 for Fort Hunter Fire Dept		
	EMS Responders & Capability	ALS		
	Equipment available on Scene	ALS		
ICP Medical Unit @ Toro	Point of Contact	Chuck Passek MEDL (907)382-5824 Eric Ulwelling MEDL-t (831)402-8957 Jesse Hernandez MEDL (520)560-2742 Dave Durham FEMP (916)505-3566		
	EMS responders & Capability	ALS		
	Equipment Available	ALS		
8.Prepared By (MEDL)		Date	Approved By (SOF1)	Date
Chuck Passek 		8/29/16	Tom Hudson 	8/29/16

MEDICAL PLAN (ICS 206 WF)

Medical Incident Report					
FOR ALL MEDICAL EMERGENCIES: IDENTIFY ON SCENE INCIDENT COMMANDER BY NAME AND POSITION AND ANNOUNCE "MEDICAL EMERGENCY" TO INITIATE RESPONSE FROM IMT COMMUNICATIONS/DISPATCH.					
Use items one through nine to communicate situation to communications/dispatch.					
1. CONTACT COMMUNICATIONS/DISPATCH <i>Ex: "Communications, Div. Alpha. Stand-by for Priority Medical Incident Report." (If life threatening request designated frequency be cleared for emergency traffic.)</i>					
2. INCIDENT STATUS: Provide incident summary and command structure.					
Nature of Injury/illness			<i>Describe the injury (Ex: Broken leg with bleeding)</i>		
Incident Name			<i>Geographic Name + "Medical" (Ex: Trout Meadow Medical)</i>		
Incident Commander			<i>Name of IC</i>		
Patient Care			<i>Name of Care Provider (Ex: EMT Smith)</i>		
3. INITIAL PATIENT ASSESSMENT: Complete this section for each patient. This is only a brief, initial assessment. Provide additional patient info after completing this 9 Line Report.					
Number of Patients:	Male / Female	Age	Weight:		
Conscious? <input type="checkbox"/> YES <input type="checkbox"/> NO = MEDEVAC!					
Breathing? <input type="checkbox"/> YES <input type="checkbox"/> NO = MEDEVAC!					
Mechanism of Injury: <i>What caused the injury?</i>					
Lat/Long (Datum WGS84) Ex: N 40° 42.45' x W 123° 03.24'					
4. SEVERITY OF EMERGENCY, TRANSPORT PRIORITY					
SEVERITY			TRANSPORT PRIORITY		
<input type="checkbox"/> URGENT-RED Life threatening injury or illness. <i>Ex: Unconscious, difficulty breathing, bleeding severely, 2° – 3° burns more than 4 palm sizes, heat stroke, disoriented.</i>			Ambulance or MEDEVAC helicopter. Evacuation need is IMMEDIATE.		
<input type="checkbox"/> PRIORITY-YELLOW Serious Injury or illness. <i>Ex: Significant trauma, not able to walk, 2° – 3° burns not more than 1-2 palm sizes.</i>			Ambulance or consider air transport if at remote location. Evacuation may be DELAYED.		
<input type="checkbox"/> ROUTINE-GREEN Not a life threatening injury or illness. <i>Ex: Sprains, strains, minor heat-related illness.</i>			Non-Emergency. Evacuation considered Routine of Convenience.		
5. TRANSPORT PLAN:					
Air Transport: (Agency Aircraft Preferred)					
<input type="checkbox"/> Helispot		<input type="checkbox"/> Short-haul/Hoist		<input type="checkbox"/> Life Flight	
				<input type="checkbox"/> Other	
Ground Transport: Click here to enter text.					
<input type="checkbox"/> Self-Extract		<input type="checkbox"/> Carry-Out		<input type="checkbox"/> Ambulance	
				<input type="checkbox"/> Other	
6. ADDITIONAL RESOURCE/EQUIPMENT NEEDS:					
<input type="checkbox"/> Paramedic/EMT(s)		<input type="checkbox"/> Crew(s)		<input type="checkbox"/> SKED/Backboard/C-Collar	
<input type="checkbox"/> Burn Sheet(s)		<input type="checkbox"/> Oxygen		<input type="checkbox"/> Trauma Bag	
<input type="checkbox"/> Medication(s)		<input type="checkbox"/> IV/Fluid(s)		<input type="checkbox"/> Cardiac Monitor/AED	
<input type="checkbox"/> Other (i.e. splints, rope rescue, wheeled litter)					
7. COMMUNICATIONS:					
Function	Channel Name/Number	Receive (Rx)	Tone/NAC *	Transmit (Tx)	Tone/NAC *
<i>Ex: Command</i>	<i>Forest Rpt, Ch. 2</i>	<i>168.3250</i>	<i>110.9</i>	<i>171.4325</i>	<i>110.9</i>
COMMAND					
AIR-TO-GRND					
TACTICAL					
*(NAC for digital radio system)					
8. EVACUATION LOCATION:					
Lat/Long (Datum WGS84) EX: N 40 42.45' x W 123 03.24'					
Patient's ETA to Evacuation Location:					
Helispot/Extraction Size and Hazards:					
9. CONTINGENCY:					
Considerations: <i>If primary options fail, what actions can be implemented in conjunction with primary evacuation method? Be thinking ahead...</i>				REMEMBER: Confirm ETA's of resources ordered Act according to your level of training Be Alert. Keep Calm. Think Clearly. Act Decisively.	