

# INCIDENT ACTION PLAN

## SOBERANES

CA-BEU-003422 PNKG7Z (1502)



OPERATIONAL PERIOD

SATURDAY, OCTOBER 1, 2016

0700-1900 HOURS

Maps



Fire weather



RAWS



<b>INCIDENT OBJECTIVES</b>	1. Incident Name <b>Soberanes</b>	2. Date <b>09/30/2016</b>	3. Time <b>2200</b>
4. Operational Period <b>SATURDAY October 01, 2016                      0700 - 1900 Hours</b>			
5. General Control Objectives for the Incident (include alternatives) <b>Management Objectives</b> <ul style="list-style-type: none"> <li>• Provide for the safety of all responders and the public by utilizing national Risk Management Standards and the implementation of appropriate mitigations.</li> <li>• Reduce firefighter exposure by only engaging fire assignments with the highest probability of success.</li> <li>• Engage cooperators and stakeholders to jointly provide for the defense of communities, infrastructure and economic interests.</li> <li>• Utilize local resource specialists to identify and protect sensitive sites and cultural resource values by minimizing impacts from suppression operations.</li> <li>• Maintain and enhance community, County, State, National Forest and stakeholder relationships through accurate and timely dissemination of information.</li> <li>• Assess and implement suppression repair needs, where appropriate in coordination with the Resource Advisor following agency policy.</li> <li>• Manage incident costs effectively for the values at risk through regular and ongoing cost analysis.</li> </ul> <b>Control Objectives</b> <p>Keep the fire;</p> <ul style="list-style-type: none"> <li>• East of Coast Ridge Road.</li> <li>• North of Nacimiento-Fergusson Road.</li> <li>• West of Carmel Valley and Reliz Canyon.</li> <li>• South of Carmel Valley Road.</li> </ul>			
6. Weather Forecast for Operational Period <ul style="list-style-type: none"> <li>• SEE WEATHER FORECAST</li> </ul>			
7. General Safety Message <ul style="list-style-type: none"> <li>• SEE SAFETY MESSAGE</li> </ul>			
8. Attachments (mark if attached)			
<input checked="" type="checkbox"/> <b>Organizational List</b> ICS 203	<input checked="" type="checkbox"/> <b>Air Operations Summary</b> ICS 220	<input checked="" type="checkbox"/> <b>Communications Plan</b> ICS 205	
<input checked="" type="checkbox"/> <b>Weather Forecast</b>	<input checked="" type="checkbox"/> <b>Safety Message</b>	<input checked="" type="checkbox"/> <b>Maps and Messages</b>	
<input checked="" type="checkbox"/> <b>Divisional Assignment Lists</b> ICS 204	<input checked="" type="checkbox"/> <b>Medical Plan</b> ICS 206	<input checked="" type="checkbox"/> <b>Unit Log</b> ICS 214	
9. Prepared by (Planning Section Chief) <u>Ann Marx</u> <i>Ann Marx</i>	10. Approved by (Incident Commander) <u>Van Arroyo</u> <i>Van Arroyo</i>		

ORGANIZATION ASSIGNMENT LIST	
1. Incident Name	
<b>Soberanes Fire</b>	
2. Date 09/30/2016	3. Time 2200
4. Operational Period	
<b>SATURDAY, October 01, 2016 0700 – 1900 HRS</b>	
5. Incident Commander and Staff	
Position	Name
Incident Commander	Van Arroyo
Deputy	Mike Sandwick / Dana D'Andrea
Safety Officer	Rick Bertram / Tom Zeulner
Information Officer	Helen Tarbet / Manny Madrigal
Human Resources	Janine Summy / Alan Seago (Rana) Cathleen Thompson (T)
Liaison Officer	Randy Graham / Warner McGrew / Jeff Jones
6. Agency Representative	
Agency	Name
USFS Agency Admin	Bob Baird
CAL FIRE Agency Admin	Brennan Blue
USFS Agency Admin Rep	Tim Short
CAL OES	Gary Humphrey / Cory Zander
Monterey County OES	Dick Bower
Monterey PRPD	Caine Carmarillo / Joseph Narvaez
California Highway Patrol	Rob Kaczor
California State Parks	Sean James
Big Sur Fire Brigade	Martha Karstens / Frank Pinney
CA Conservation Corp	Ben Herbert / Fresno CCC (Liggett)
SACC	Tony Collins
7. Planning Section	
Position	Name
Chief	Ann Marx / Robert Kovach (Rana) / Dan Michael (T)
Resources Unit	Pat Caprioli / Justin Wilson / Mike Finnerty Bobby Cahal / Wayne Barney (Rana)
Situation Unit	Mike Held / Paul Kaiser / Allison Hitchcock (Rana) Brian Wilson(T)/Jennifer Erickson(T)/Dena Paschke(T)
Documentation	Rex Crabtree
Demobilization	Marian Kadota
Fire Behavior Analyst	Scott Cones / Josh Eichamer (T)
Long Term Anylist	Cary Newman
Training Specialist	Robert Rivelle / Dennis Martin (T) (Rana)
GIS Specialist	Nick Mouthann
Technology Support	Marty Cohn / Charlene Jumper / Heather Wiskow Sherry Degroot (T) / Cheryl DeShazer (T)
IMET	Julia Ruthford / Kurt Van Speybroeck [Rana]
Air Resource Advisor	Jennifer Croft / Sean Luchs (T)
Resource Advisor	Cedar Drake / James Heintz


8. Logistics Section	
Position	Name
Chief	Tom Crakes / Rob Griffith / Bob Feldtz Scott Gardner (T) Mike Beeman (T)
Supply Unit	John Harkelroad
Facilities Unit	Mike Farmer / Jim Eckroth
Ground Support	Fred Simonds / John Badaracco
Communications	David Paschke / Kevin Harper
Food Unit	Kerry Kellogg / Laura Roundine (Rana) / Scott Hague (T)
Medical	Devon Haggie / Andy Demetroplis (T)
Security	Fred Workman

9. Operations Section	
Operations Section Chief	John Abell Troy Nelsen (T) / Shaun Craig (T)
Planning Ops. Section Chief	Bob Neumann / John Lucas (T)

DIVISIONS / GROUPS		
Division	J / K / L	Chris Linane
Division	M / AA	Bill King / Steve Miranda (T)
Group	Tassajara SDG	Trenton Prins / Jeff Goldstien Josh Thomas (T)
Group	North Repair	Tim Ernst / Brent Kaiser Greg Cox (T) / Sean Perkins (T)
Group	Road Group East	Andrew Bernard / Joseph Fansler (T)
Division	CC	Dan Freeh

Division	GG	Michael Sweany
Group	South Repair	Zane Brown
Group	West Repair	Ralph Sweeney / Tim Whorton


Air Operations Branch	
Air Ops Branch Director	John Crotty / Brian Sexton (T)
Air Support Supervisor	Al Driesbach / Curt Warner
Air Attack Supervisor	Val Linch / Mark Nunez
Helicopter Coordinator	Dave Phillips

10. Finance Section	
Position	Name
Chief	Robin Nimura / Amy Lee (T) Ann Marie Carlson (T)
Time Unit	Gloria McCabe / Dione Perkins (T)
Cost	Tammy Monahan
Procurement Unit	
Compensation Unit / Claims	Michelle Beltcher / Tracy Nicholson
Prepared by Pat Caprioli RESL 	





# Soberanes Fire Weather Forecast



Forecast Information & SPOT Forecasts

FORECAST NO: 70

NAME OF FIRE: Soberanes

PREDICTION FOR: 0700 Sat - 0700 Sun  
SHIFT DATE: Saturday Oct 1, 2016

UNIT: CA-BEU/LPF MRD

SIGNED: Julia Ruthford

*Julia E. Ruthford*  
Incident Meteorologists

TIME AND DATE  
FORECAST ISSUED: 1900 9/30/16

Julia Ruthford (Toro ICP) – Cell 971-221-6728

Kurt Van Speybroeck (Rana Camp) – Cell 831-659-0290

**Weather Discussion:** Cool, breezy conditions will continue today behind the cold front that passed overhead late yesterday. Patchy morning ridge level clouds should burn off for a mostly sunny afternoon. General winds will be out of the north in the morning and turn more northwesterly in the afternoon. Miller Canyon, Pine Valley and Tassajara Creek will remain favorable for channeling the afternoon northwest winds.

## WEATHER FORECAST for Today: Cooler but Breezy

	Coastal Valleys / Lower Slopes	Ridgetops / Upper Slope	Inland Valleys / Lower Slopes
<b>Weather</b>	Partly cloudy in the morning then becoming sunny.	Patchy ridge level clouds in the morning then becoming sunny.	Partly cloudy in the morning then becoming sunny.
<b>Highs</b>	In the mid 70s	In the lower 70s	In the lower 80s
<b>Min RHs</b>	25 - 30%	Around 30%	20 to 25%
<b>20 ft Winds</b>	North wind 15 to 20 mph with gusts to 25 mph becoming NW in the afternoon.	North wind 20 to 25 mph with gusts to 30 mph becoming NW 15 to 25 mph in the afternoon.	Upslope winds 3-5 mph becoming up-valley 5-8 mph with gusts 10-15 mph in the afternoon. E-NE winds 15-20 mph through lower elevations in Arroyo Seco and Willow Creek. <b>NW winds 15 to 25 mph in NW to SE drainages such as Pine Valley and Miller Canyon and Tassajara Creek.</b>

**Marine Layer:** Increased morning RHs due to onshore flow and cooler temperatures but low marine stratus not expected along the coast.

**Haines: 3**


**WEATHER FORECAST for Tonight:** Mostly clear and cool. Lows in the 40s. Max RHs 70 to 80% valleys and 50 % to 60% mid-slope. Northwest winds 15 to 20 mph.

**OUTLOOK for Sunday:** A stronger upper level trough swinging through northern California will bring strong winds, colder temperatures and high humidities. Northwest winds will increase to 25 to 35 mph through the day Sunday and then continue Sunday night. High temperatures around 60 ridges to lower 70s valleys. Minimum RHs 40 to 50%. Lows in the lower 30s on ridges to lower 40s in valleys. Nighttime RH recoveries 90 to 100% with upslope clouds forming along ridges. While accumulating precipitation from this system is not expected over the fire area, heavy dew and mist is likely.

**EXTENDED FORECAST for Monday through Thursday:** Breezy winds will continue on Monday out of the north to northwest and then turn more northerly Tuesday as they gradually diminish. Offshore northeast winds will develop on Wednesday and then become southeast Thursday. Temperatures will gradually warm through the week with humidities falling back into the mid-teens by Wednesday and Thursday.



## FIRE BEHAVIOR FORECAST

<b>FORECAST NUMBER:</b> 69	<b>TYPE OF FIRE</b> Wildfire
<b>FIRE NAME:</b> Soberanes East/West Operational Area	<b>OPERATIONAL PERIOD</b> 10-1-2016 24 HOUR SHIFT
<b>DATE ISSUED</b> 9-30-2016	<b>TIME ISSUED</b> 1900 HOURS
<b>UNIT</b> CA-BEU-003422	<b>SIGNED</b> Josh Eichamer FBAN (t) 

### INPUTS

**\*\*\* WIND SCHEDULE \*\*\***  
GENERAL OVERVIEW

Wind N-NW 15-25 during the day.  
NW 25-35 Saturday evening

**\*\*\*Review Weather Forecast for details\*\*\***

### FIRE BEHAVIOR

**GENERAL**  
**LOCAL THRESHOLDS – WATCH OUTS**

Combinations of any of these threshold factors can greatly increase fire behavior:

<b>Thresholds:</b>		20' wind Over 7mph	RH Less Than 17%	Temperatures Over 98°	10hr fuel Less than 6%
<b>Forecasted</b>	<b>Ridges</b>	<b>15-25 mph</b>	25-30%	65-69°	<b>6-9%</b>
	<b>Valleys</b>	<b>15-25 mph</b>	25-30%	75-79°	<b>5-10%</b>

**\*\*\*RH will increase significantly during the night-time hours in valleys\*\*\***

Coastal Sage Scrub fuel, primarily chamise and button brush, have seasonally low live fuel moisture for this time of year. Fire continues to burn in areas burned by both the 1999 Kirk and 2008 Basin Fires, and further south in fuels burned only once by the 2008 Basin fire. Snags, skeleton brush and heavy downed fuel are abundant.

**Probability of ignition: Day: Unshaded 70% Night: 40%**

### SPECIFIC

#### **ALL DIVISIONS**

Cooler temperatures and higher RH will assist in reinforcing control lines. Surface fuels remain extremely dry due to drought conditions and will take time to fully recover. Areas that appeared to be dormant for several weeks, are now starting to show themselves. The potential is still there for large fire growth, but the probability is low due to minimal active fire perimeter.

West Operational area may have some creeping and smoldering heat.

East Operational area will continue to have smoke pop up where there is heat. Expect creeping and smoldering where there is still scattered heat.

The possibility for active fire behavior within the fire perimeter between Pine Valley and Tassajara Drainage exists. In the event the fire becomes established, upslope rapid runs and plume development will be possible, however they would likely be short lived. Spotting distances in this area >1/10<sup>th</sup> mile.

#### **AIR OPERATIONS**

VFR conditions expected through the operational period.

#### **SAFETY**

**Avoid having a hazardous attitude!!!**

## Division/Group Assignment List (ICS 204 WF)

<b>1. Incident Name:</b>			<b>3.</b>			
SOBERANES			Branch:		Division/Group:	
<b>2. Operational Period:</b>			<b>DAY</b>		J/K/L	
Date/Time From: 10/01/2016 0700      SAT		Date/Time To: 10/01/2016 1900      SAT				
<b>4. Operations Personnel</b>						
<b>OPERATIONS CHIEF</b>		JOHN ABELL (10/12) SHAUN CRAIG (10/12) (T)		<b>DIVISION/GROUP SUPERVISOR</b>		CHRIS LINANE (10/1)
<b>AIR ATTACK SUPERVISOR</b>		VAL LINCHE (10/12) MARK NUNEZ 10/12)				
<b>5. Resources Assigned this Period</b>						
Strike Team / Task Force / Resource Designator	LWD	Leader	Number Persons	Drop Off PT./Time	Pick Up PT./Time	
CRW2IA BOISE CREW 3 C-10219	10/04	ED HUNT	18	RANA/0700	RANA/1900	
ENG3 LPF 18 E-10821.2	10/10	BEAU RICHWINE	5	RANA/0700	RANA/1900	
ENG4 UPF 24 E-10798	10/03	BRAD HARDESTY	6	RANA/0700	RANA/1900	
SKG2 LET ER BUCK E-10054	10/12	STEVE LASSEN JR	1	RANA/0700	RANA/1900	
WTS1 FIRELINE SUPPORT E-10438	10/09	MATT MICHAELS	1	RANA/0700	RANA/1900	
WTT2 CNF 222 E-10449	10/11	GUZMAN EDUARDO	2	RANA/0700	RANA/1900	
TFLD O-11400	10/08	JESSE KNOX	1	RANA/0700	RANA/1900	
TFLD (T) O-11072	10/05	RACHAEL HANSEN	1	RANA/0700	RANA/1900	
FEMP O-11366	10/06	GARY JOHNSON	1	RANA/0700	RANA/1900	
FEMP O-11370	10/06	NICHOLAS STEPANIAN	1	RANA/0700	RANA/1900	
FEMP O-11365	10/06	NICK RUBIN	1	RANA/0700	RANA/1900	
FEMT O-11042	10/03	PHIL FAULDING	1	RANA/0700	RANA/1900	
SOF2 O-11479.38	10/12	GALEN R YOUNG	1	RANA/0700	RANA/1900	
<b>8. Division/Group Communication Summary</b>						
Function	Channel	RX Frequency N/W	RX Tone/NAC	TX Frequency N/W	TX Tone/NAC	Mode
TACTICAL NIFC T7	7	168.2500N		168.2500N		A
MEDICAL CALCORD	15	156.0750N	156.7	156.0750N	156.7	A
AIR TO GROUND TAC	14	159.2700N	192.8	159.2700N	192.8	A
EMERGENCY GUARD	16	168.6250N		168.625N	110.9	A
<b>9. Prepared By (Resource Unit Leader)</b>			<b>Approved By (Planning Section Chief)</b>		<b>Date</b>	<b>Time</b>
MIKE FINNERTY			ANN MARX		09/30/2016	2200



## Division/Group Assignment List (ICS 204 WF)

<b>1. Incident Name:</b>		<b>3.</b>				
SOBERANES		<b>Branch:</b>		<b>Division/Group:</b>		
<b>2. Operational Period:</b>		<b>J / K / L</b>				
<b>DAY</b>						
Date/Time From: 10/01/2016 0700      SAT	Date/Time To: 10/01/2016 1900      SAT					
<b>4. Operations Personnel</b>						
<b>OPERATIONS CHIEF</b>	JOHN ABELL (10/12) SHAUN CRAIG (10/12) (T)	<b>DIVISION/GROUP SUPERVISOR</b>	CHRIS LINANE (10/1)			
<b>AIR ATTACK SUPERVISOR</b>	VAL LINCH (10/12) MARK NUNEZ 10/12)					
<b>5. Resources Assigned this Period</b>						
Strike Team / Task Force / Resource Designator	LWD	Leader	Number Persons	Drop Off PT./Time	Pick Up PT./Time	
<b>6. Control Operations/Work Assignments:</b>						
<ul style="list-style-type: none"> <li>Mop-up to the degree necessary to make the possibility of escape very low while ensuring a safe working environment.</li> <li>Backhaul equipment, trash and hose at the direction of the Division.</li> <li>Division to work with READS and Repair Group in identifying and assisting where possible with Fire Suppression repair.</li> </ul>						
<b>7. Special Instructions:</b>						
<ul style="list-style-type: none"> <li>REMS #1 ( w/ FEMP's Stary and Peters ) / REMS #2 ( w/ FEMP's Warrick, Giacomini and Odebralski ) are assigned to East Zone.</li> <li>Division Group Supervisors must validate cost apportionment on 204's at the end of each shift. Contact Finance Section Chief for questions.</li> <li>All resources utilizing water in excess of 100 gal must document water usage on the enclosed Water Usage Log. Submit with your time.</li> <li>If you open a gate close the gate!!!</li> </ul>						
<b>8. Division/Group Communication Summary</b>						
Function	Channel	RX Frequency N/W	RX Tone/NAC	TX Frequency N/W	TX Tone/NAC	Mode
TACTICAL NIFC T7	7	168.2500N		168.2500N		A
MEDICAL CALCORD	15	156.0750N	156.7	156.0750N	156.7	A
AIR TO GROUND TAC	14	159.2700N	192.8	159.2700N	192.8	A
EMERGENCY GUARD	16	168.6250N		168.625N	110.9	A
<b>9. Prepared By (Resource Unit Leader)</b>		<b>Approved By (Planning Section Chief)</b>		<b>Date</b>	<b>Time</b>	
MIKE FINNERTY		ANN MARX		09/30/2016	2200	

### Division/Group Assignment List (ICS 204 WF)

<b>1. Incident Name:</b>			<b>3.</b>			
SOBERANES			<b>Branch:</b>		<b>Division/Group:</b>	
<b>2. Operational Period:</b>			<b>M / AA</b>			
<b>DAY</b>						
Date/Time From: 10/01/2016 0700 SAT		Date/Time To: 10/01/2016 1900 SAT				
<b>4. Operations Personnel</b>						
<b>OPERATIONS CHIEF</b>		JOHN ABELL (10/12) SHAUN CRAIG (10/12) (T)		<b>DIVISION/GROUP SUPERVISOR</b>		
				BILL KING (10/5) STEVEN MIRANDA (10/5) (T)		
<b>AIR ATTACK SUPERVISOR</b>		VAL LINCH (10/12) MARK NUNEZ (10/12)				
<b>5. Resources Assigned this Period</b>						
Strike Team / Task Force / Resource Designator		LWD	Leader	Number Persons	Drop Off PT./Time	Pick Up PT./Time
CRW1 PIKE IHC C-10229		10/06	JOHN ALLBRIGHT	22	RANA/0700	RANA/1900
FEMP O-11281		10/03	JUSTIN MARTIN	1	RANA/0700	RANA/1900
FEMP O-11368		10/06	THOMAS WATSON	1	RANA/0700	RANA/1900
FEMT O-11421		10/04	MICHAEL J COLEY	1	RANA/0700	RANA/1900
FEMT O-11374		10/06	DREW KOSTAL	1	RANA/0700	RANA/1900
SOFR O-11340		10/04	DAVID MCFEE	1	RANA/0700	RANA/1900
SOFR(T) O-11527		10/13	KENNETH L THOMPSON	1	RANA/0700	RANA/1900
<b>6. Control Operations/Work Assignments:</b>						
<ul style="list-style-type: none"> <li>• Mop-up to the degree necessary to make the possibility of escape very low while ensuring a safe working environment.</li> <li>• Backhaul equipment, trash and hose at the direction of the Division.</li> <li>• Division to work with READS and Repair Group in identifying and assisting where possible with Fire Suppression repair.</li> </ul>						
<b>7. Special Instructions:</b>						
<ul style="list-style-type: none"> <li>• REMS #1 ( w/ FEMP's Stary and Peters ) / REMS #2 ( w/ FEMP's Warrick, Giacomini and Odebralski ) are assigned to East Zone.</li> <li>• Division Group Supervisors must validate cost apportionment on 204's at the end of each shift. Contact Finance Section Chief for questions.</li> <li>• All resources utilizing water in excess of 100 gal must document water usage on the enclosed Water Usage Log. Submit with your time.</li> <li>• If you open a gate close the gate!!!</li> </ul>						
<b>8. Division/Group Communication Summary</b>						
Function	Channel	RX Frequency N/W	RX Tone/NAC	TX Frequency N/W	TX Tone/NAC	Mode
TACTICAL R5 T6	9	168.2375N		168.2375N		A
MEDICAL CALCORD	15	156.0750N	156.7	156.0750N	156.7	A
AIR TO GROUND TAC	14	159.2700N	192.8	159.2700N	192.8	A
EMERGENCY GUARD	16	168.6250N		168.625N	110.9	A
<b>9. Prepared By (Resource Unit Leader)</b>			<b>Approved By (Planning Section Chief)</b>		<b>Date</b>	<b>Time</b>
MIKE FINNERTY			ANN MARX		09/30/2016	2200



## Division/Group Assignment List (ICS 204 WF)

<b>1. Incident Name:</b>		<b>3.</b>				
SOBERANES		<b>Branch:</b>		<b>Division/Group:</b>		
<b>2. Operational Period:</b>		<b>TASSAJARA SDG</b>				
<b>DAY</b>						
Date/Time From: 10/01/2016 0700	SAT	Date/Time To: 10/01/2016 1900	SAT			
<b>4. Operations Personnel</b>						
<b>OPERATIONS CHIEF</b>		JOHN ABELL (10/12) SHAUN CRAIG (10/12) (T)		<b>DIVISION/GROUP SUPERVISOR</b>		TRENTON PRINS (10/3) J.GOLDSTEIN (10/11) ; J.THOMAS (T)
<b>AIR ATTACK SUPERVISOR</b>		VAL LINCH (10/12) MARK NUNEZ (10/12)				
<b>5. Resources Assigned this Period</b>						
Strike Team / Task Force / Resource Designator	LWD	Leader	Number Persons	Drop Off PT./Time	Pick Up PT./Time	
CRW1 ALPINE IHC C-10210	10/01	PAUL CERDA	21	RANA/0700	RANA/1900	
CRW1 ZIGZAG IHC C-10243	10/03	DIEGO MENDIOLA	20	RANA/0700	RANA/1900	
CRW1 BAKER RIVER IHC C-10244	10/02	KURT RANTA	20	RANA/0700	RANA/1900	
CRW1 RIO BRAVO IHC C-10245	10/01	JIMMIE ROCHA	20	RANA/0700	RANA/1900	
CRW1 BEAR DIVIDE C-10227	10/04	BRIAN ANDERSON	20	RANA/0700	RANA/1900	
CRW1 MAD RIVER IHC C-10238	10/06	CHARLES HAIR	21	RANA/0700	RANA/1900	
CRW1 BRECKENRIDGE IHC C-10230	10/06	JAMES ROBERTSON	20	RANA/0700	RANA/1900	
CRW2 BIG HORN C-10215	10/01	ROMALDO NAVARRO	23	RANA/0700	RANA/1900	
ENG3 LPF 352 E-10821.5	10/10	MICHAEL SHIFFRAR	5	RANA/0700	RANA/1900	
ENG3 LPF 371 E-10821.6	10/10	RICKY AISPURO	5	RANA/0700	RANA/1900	
ENG6 LUR 8160 E-10723	10/01	KEITH A MAYER	3	RANA/0700	RANA/1900	
FRONT END LOADER E-10781	10/06	JOHN RICKER	1	RANA/0700	RANA/1900	
WTS1 NORTHSTATE 324 E-10740	10/01	MAURICE RHODES	1	RANA/0700	RANA/1900	
STEN E-10821.1	10/10	ROB THIBAULT	1	RANA/0700	RANA/1900	
FFT2 O-11425	10/06	TAYLOR SIEMANN	1	RANA/0700	RANA/1900	
FOBS O-11473	10/11	MICHAEL CONNOLLY	1	RANA/0700	RANA/1900	
FOBS (T) O-11474	10/11	THOMAS STEVENS	1	RANA/0700	RANA/1900	
FEMP O-11372	10/06	TODD LESIEUR	1	RANA/0700	RANA/1900	
FEMT O-11422	10/07	JEFF TOMERLIN	1	RANA/0700	RANA/1900	
FEMP O-11371	10/06	SEAN CAVAVAUGH	1	RANA/0700	RANA/1900	
<b>8. Division/Group Communication Summary</b>						
Function	Channel	RX Frequency N/W	RX Tone/NAC	TX Frequency N/W	TX Tone/NAC	Mode
TACTICAL VFIRE 25	10	154.2875N	156.7	154.2875N	156.7	A
MEDICAL CALCORD	15	156.0750N	156.7	156.0750N	156.7	A
AIR TO GROUND TAC	14	159.2700N	192.8	159.2700N	192.8	A
EMERGENCY GUARD	16	168.6250N		168.625N	110.9	A
<b>9. Prepared By (Resource Unit Leader)</b>		<b>Approved By (Planning Section Chief)</b>		<b>Date</b>	<b>Time</b>	
MIKE FINNERTY		ANN MARX		09/30/2016	2200	

## Division/Group Assignment List (ICS 204 WF)

<b>1. Incident Name:</b>			<b>3.</b>			
SOBERANES			<b>Branch:</b>		<b>Division/Group:</b>  <b>TASSAJARA SDG</b>	
<b>2. Operational Period: DAY</b>						
Date/Time From: 10/01/2016 0700 SAT		Date/Time To: 10/01/2016 1900 SAT				
<b>4. Operations Personnel</b>						
<b>OPERATIONS CHIEF</b>		JOHN ABELL (10/12) SHAUN CRAIG (10/12) (T)		<b>DIVISION/GROUP SUPERVISOR</b>		TRENTON PRINS (10/3) J.GOLDSTEIN (10/11) ; J.THOMAS (T)
<b>AIR ATTACK SUPERVISOR</b>		VAL LINCH (10/12) MARK NUNEZ (10/12)				
<b>5. Resources Assigned this Period</b>						
Strike Team / Task Force / Resource Designator		LWD	Leader	Number Persons	Drop Off PT./Time	Pick Up PT./Time
FEMP O-11282		10/03	CHRISTOPHER VILLASENOR	1	RANA/0700	RANA/1900
SOF2 O-11394		10/08	LARRY WADE	1	RANA/0700	RANA/1900
<b>6. Control Operations/Work Assignments:</b>						
<ul style="list-style-type: none"> <li>Continue direct line tactics along fires edge where safe.</li> <li>Be prepared to implement structure defense plan as appropriate.</li> </ul>						
<b>7. Special Instructions:</b>						
<ul style="list-style-type: none"> <li>REMS #1 ( w/ FEMP's Stary and Peters ) / REMS #2 ( w/ FEMP's Warrick, Giacomini and Odebralski ) are assigned to East Zone.</li> <li>Division Group Supervisors must validate cost apportionment on 204's at the end of each shift. Contact Finance Section Chief for questions.</li> <li>All resources utilizing water in excess of 100 gal must document water usage on the enclosed Water Usage Log. Submit with your time.</li> <li>If you open a gate close the gate!!!</li> </ul>						
<b>8. Division/Group Communication Summary</b>						
Function	Channel	RX Frequency N/W	RX Tone/NAC	TX Frequency N/W	TX Tone/NAC	Mode
TACTICAL VFIRE 25	10	154.2875N	156.7	154.2875N	156.7	A
MEDICAL CALCORD	15	156.0750N	156.7	156.0750N	156.7	A
AIR TO GROUND TAC	14	159.2700N	192.8	159.2700N	192.8	A
EMERGENCY GUARD	16	168.6250N		168.625N	110.9	A
<b>9. Prepared By (Resource Unit Leader)</b>			<b>Approved By (Planning Section Chief)</b>		<b>Date</b>	<b>Time</b>
MIKE FINNERTY			ANN MARX		09/30/2016	2200



## Division/Group Assignment List (ICS 204 WF)

<b>1. Incident Name:</b>		<b>3.</b>				
SOBERANES		<b>Branch:</b>		<b>Division/Group:</b>		
<b>2. Operational Period:</b>		<b>NORTH REPAIR GROUP</b>				
<b>DAY</b>						
Date/Time From: 10/01/2016 0700 SAT	Date/Time To: 10/01/2016 1900 SAT					
<b>4. Operations Personnel</b>						
<b>OPERATIONS CHIEF</b>	JOHN ABELL (10/12) SHAUN CRAIG (10/12) (T)	<b>DIVISION/GROUP SUPERVISOR</b>	TIM ERNST (10/3), BRETT KAISER (10/8) G. COX (10/8) (T), S. PERKINS (10/3) (T)			
<b>AIR ATTACK SUPERVISOR</b>	VAL LINCH (10/12) MARK NUNEZ (10/12)					
<b>5. Resources Assigned this Period</b>						
Strike Team / Task Force / Resource Designator	LWD	Leader	Number Persons	Drop Off PT./Time	Pick Up PT./Time	
CRW2IA GE FORESTRY 8C C-10236	10/03	PEDRO CHAPARRO	20	RANA/0700	RANA/1900	
CRW2IA GE FORESTRY 8B C-10221	10/04	ESTEBAN GONZALEZ	20	RANA/0700	RANA/1900	
ENG6 PATROL 11 E-10724	10/01	GENE HICKS	2	RANA/0700	RANA/1900	
DOZ2 BENNETT E-10777	10/06	SAM BENNETT	2	RANA/0700	RANA/1900	
DOZ2 DENIS DOZER E-10775	10/06	MATT BORLAND	2	RANA/0700	RANA/1900	
DOZ2 CAROTHERS DOZER E-10776	10/06	JOEL CAROTHERS	2	RANA/0700	RANA/1900	
EXCA2 WALBERG E-10669	09/30	GARY LAWLESS	1	RANA/0700	RANA/1900	
EXCA VARIAN U1360 E-10676	10/02	MIKE EVENSON	1	RANA/0700	RANA/1900	
CHIP1 CECIL E-10817	10/11	DENNIS PALMER	2	RANA/0700	RANA/1900	
WTS2 SIERRA WATER 544 E-10610	10/10	PAUL BRANDON	1	RANA/0700	RANA/1900	
TFLD O-11404	10/08	PAMELA MESSAL	1	RANA/0700	RANA/1900	
TFLD O-11403	10/08	RICK MARINELLI	1	RANA/0700	RANA/1900	
TFLD (T) O-11423	10/08	CINDY PETRICH	1	RANA/0700	RANA/1900	
HEQB O-11409	10/08	RITTER BETHEL	1	RANA/0700	RANA/1900	
HEQB O-11410	10/08	RIGOBERTO FLORES	1	RANA/0700	RANA/1900	
HEQB O-11408	10/02	TROY MACKAY	1	RANA/0700	RANA/1900	
HEQB (T) O-11429	10/08	BRENT CORKISH	1	RANA/0700	RANA/1900	
FOBS O-11491	10/03	MICHAEL COBB	1	RANA/0700	RANA/1900	
FOBS O-11233	10/01	DAVID CELAYA	1	RANA/0700	RANA/1900	
FOBS O-11477	10/11	MEREDITH CHILDS	1	RANA/0700	RANA/1900	
<b>8. Division/Group Communication Summary</b>						
Function	Channel	RX Frequency N/W	RX Tone/NAC	TX Frequency N/W	TX Tone/NAC	Mode
TACTICAL CDF T1	11	151.2575N	192.8	151.2575N	192.8	A
MEDICAL CALCORD	15	156.0750N	156.7	156.0750N	156.7	A
AIR TO GROUND TAC	14	159.2700N	192.8	159.2700N	192.8	A
EMERGENCY GUARD	16	168.6250N		168.625N	110.9	A
<b>9. Prepared By (Resource Unit Leader)</b>			<b>Approved By (Planning Section Chief)</b>		<b>Date</b>	<b>Time</b>
MIKE FINNERTY			ANN MARX		09/30/2016	2200

## Division/Group Assignment List (ICS 204 WF)

<b>1. Incident Name:</b>		<b>3.</b>				
SOBERANES		<b>Branch:</b>		<b>Division/Group:</b>		
<b>2. Operational Period:</b>		<b>NORTH REPAIR GROUP</b>				
<b>DAY</b>						
Date/Time From: 10/01/2016 0700	SAT	Date/Time To: 10/01/2016 1900	SAT			
<b>4. Operations Personnel</b>						
<b>OPERATIONS CHIEF</b>	JOHN ABELL (10/12) SHAUN CRAIG (10/12) (T)		<b>DIVISION/GROUP SUPERVISOR</b>	TIM ERNST (10/3), BRETT KAISER (10/8) G. COX (10/8) (T), S. PERKINS (10/3) (T)		
<b>AIR ATTACK SUPERVISOR</b>	VAL LINCH (10/12) MARK NUNEZ (10/12)					
<b>5. Resources Assigned this Period</b>						
Strike Team / Task Force / Resource Designator	LWD	Leader	Number Persons	Drop Off PT./Time	Pick Up PT./Time	
FOBS (T) O-11487	10/03	JOHN ALEXIOU	1	RANA/0700	RANA/1900	
FEMP O-11468	10/03	CHARLES BROWN	1	RANA/0700	RANA/1900	
FEMP O-11467	10/03	TIMOTHY CHOW	1	RANA/0700	RANA/1900	
SOFR O-11399	10/08	NATHAN LEATHERMAN	1	RANA/0700	RANA/1900	
SOFR (T) O-11285	10/03	MATTHEW LUCAS	1	RANA/0700	RANA/1900	
ARCH O-11147	10/02	ALICIA BONSKOWSKI	1	RANA/0700	RANA/1900	
REAF O-11149	10/02	STACY MANSON	1	RANA/0700	RANA/1900	
REAF O-11229	10/03	CLIFF PIPER	1	RANA/0700	RANA/1900	
ARCH O-10994	10/03	ANN BROWN	1	RANA/0700	RANA/1900	
READ O-11224	10/04	KEVIN KEELER	1	RANA/0700	RANA/1900	
<b>6. Control Operations/Work Assignments:</b>						
<ul style="list-style-type: none"> <li>• Assess &amp; implement fire suppression repair as directed by Resource Advisers.</li> <li>• Patrol &amp; mop-up to prevent the fire from escaping containment lines.</li> <li>• If found, assist in the back haul of excess equipment &amp; trash.</li> </ul>						
<b>7. Special Instructions:</b>						
<ul style="list-style-type: none"> <li>• REMS #1 ( w/ FEMP's Stary and Peters ) / REMS #2 ( w/ FEMP's Warrick, Giacomini and Odebralski ) are assigned to East Zone.</li> <li>• Division Group Supervisors must validate cost apportionment on 204's at the end of each shift. Contact Finance Section Chief for questions.</li> <li>• All resources utilizing water in excess of 100 gal must document water usage on the enclosed Water Usage Log. Submit with your time.</li> <li>• If you open a gate close the gate!!!</li> </ul>						
<b>8. Division/Group Communication Summary</b>						
Function	Channel	RX Frequency N/W	RX Tone/NAC	TX Frequency N/W	TX Tone/NAC	Mode
TACTICAL CDF T1	11	151.2575N	192.8	151.2575N	192.8	A
MEDICAL CALCORD	15	156.0750N	156.7	156.0750N	156.7	A
AIR TO GROUND TAC	14	159.2700N	192.8	159.2700N	192.8	A
EMERGENCY GUARD	16	168.6250N		168.625N	110.9	A
<b>9. Prepared By (Resource Unit Leader)</b>			<b>Approved By (Planning Section Chief)</b>		<b>Date</b>	<b>Time</b>
MIKE FINNERTY			ANN MARX		09/30/2016	2200

## Division/Group Assignment List (ICS 204 WF)

<b>1. Incident Name:</b>		<b>3.</b>				
SOBERANES		<b>Branch:</b>		<b>Division/Group:</b>		
<b>2. Operational Period:</b>		<b>ROAD GROUP EAST</b>				
<b>DAY</b>						
Date/Time From: 10/01/2016 0700      SAT	Date/Time To: 10/01/2016 1900      SAT					
<b>4. Operations Personnel</b>						
<b>OPERATIONS CHIEF</b>	JOHN ABELL (10/12) SHAUN CRAIG (10/12) (T)	<b>DIVISION/GROUP SUPERVISOR</b>	ANDREW BERNARD (10/2) JOSEPH FANSLER (10/2) (T)			
<b>AIR ATTACK SUPERVISOR</b>	VAL LINCH (10/12) MARK NUNEZ (10/12)					
<b>5. Resources Assigned this Period</b>						
Strike Team / Task Force / Resource Designator	LWD	Leader	Number Persons	Drop Off PT./Time	Pick Up PT./Time	
GRAD ROEN E-10300	10/04	LENNY BERTAGNOLLI	1	RANA/1800	RANA/0600	
GRAD HUMPHREY E-10480	10/02	RONALD HUMPHREY	1	RANA/1800	RANA/0600	
WTS2 NORTHSTATE E-10763	10/03	RANDY HERMAN	1	RANA/1800	RANA/0600	
WTS2 NORTHSTATE E-10500	10/03	DARRYL PRUITT	1	RANA/1800	RANA/0600	
WTS2 BAY AREA E-10761	10/03	MATTHEW STEWART	1	RANA/1800	RANA/0600	
WTS2 RIVER OAK 2 E-10760	10/03	JASON ALEXANDER	1	RANA/1800	RANA/0600	
WTS2 INDIHAR #028 E-10654	10/08	PHILLIP INDIHAR	1	RANA/1800	RANA/0600	
WTS2 49ER E-10437	10/12	DICK SASSER	1	RANA/1800	RANA/0600	
TFLD O-11192	10/01	CHAD HYATT	1	RANA/1800	RANA/0600	
<b>6. Control Operations/Work Assignments:</b>						
<ul style="list-style-type: none"> <li>Assess &amp; implement fire suppression repair as directed by Resource Advisers.</li> <li>Patrol &amp; mop-up to prevent the fire from escaping containment lines.</li> <li>If found, assist in the back haul of excess equipment &amp; trash.</li> </ul>						
<b>7. Special Instructions:</b>						
<ul style="list-style-type: none"> <li>REMS #1 ( w/ FEMP's Stary and Peters ) / REMS #2 ( w/ FEMP's Warrick, Giacomini and Odebralski ) are assigned to East Zone.</li> <li>Please be mindful of your driving habits, other drivers, and road conditions. We've had several incidents and near misses along our routes and roadways.</li> <li>Division Group Supervisors must validate cost apportionment on 204's at the end of each shift. Contact Finance Section Chief for questions.</li> <li>All resources utilizing water in excess of 100 gal must document water usage on the enclosed Water Usage Log. Submit with your time.</li> <li>If you open a gate close the gate!!!</li> </ul>						
<b>8. Division/Group Communication Summary</b>						
Function	Channel	RX Frequency N/W	RX Tone/NAC	TX Frequency N/W	TX Tone/NAC	Mode
TACTICAL CDF T1	11	151.2575N	192.8	151.2575N	192.8	A
MEDICAL CALCORD	15	156.0750N	156.7	156.0750N	156.7	A
AIR TO GROUND TAC	14	159.2700N	192.8	159.2700N	192.8	A
EMERGENCY GUARD	16	168.6250N		168.6250N	110.9	A
<b>9. Prepared By (Resource Unit Leader)</b>			<b>Approved By (Planning Section Chief)</b>		<b>Date</b>	<b>Time</b>
MIKE FINNERTY			ANN MARX		09/30/2016	2200



## Division/Group Assignment List (ICS 204 WF)

<b>1. Incident Name:</b>			<b>3.</b>			
SOBERANES			<b>Branch:</b>		<b>Division/Group:</b>  <b>CC</b>	
<b>2. Operational Period:</b> <b>DAY</b>						
Date/Time From: 10/01/2016 0700                      SAT		Date/Time To: 10/01/2016 1900                      SAT				
<b>4. Operations Personnel</b>						
<b>OPERATIONS CHIEF</b>		JOHN ABELL (10/12) SHAUN CRAIG (10/12) (T)		<b>DIVISION/GROUP SUPERVISOR</b>		DAN FREEH (10/11)
<b>AIR ATTACK SUPERVISOR</b>		VAL LINCH (10/12) MARK NUNEZ (10/12)				
<b>5. Resources Assigned this Period</b>						
Strike Team / Task Force / Resource Designator		LWD	Leader	Number Persons	Drop Off PT./Time	Pick Up PT./Time
CRW1 TEXAS CANYON IHC C-10242		10/01	JOHN ARMSTRONG	20	RANA/0700	RANA/1900
CRW2IA PACIFIC OASIS 8A C-10220		10/03	DONOVAN CULP	20	RANA/0700	RANA/1900
HEQB O-11198		10/02	MICHAEL LESLIE	1	RANA/0700	RANA/1900
FEMT O-11284		10/03	PATRICK DOTSON	1	RANA/0700	RANA/1900
FEMT O-10945		10/01	RUSTY EHRLER	1	RANA/0700	RANA/1900
SOF 2 O-11530		10/13	MARK HELM	1	RANA/0700	RANA/1900
<b>6. Control Operations/Work Assignments:</b>						
<ul style="list-style-type: none"> <li>• Mop-up to the degree necessary to make the probability of escape very low while ensuring a safe work environment.</li> <li>• Back haul equipment, trash and hose at the direction of the division.</li> <li>• Division to work with READs and repair group in identifying and assisting where possible with fire suppression repair.</li> </ul>						
<b>7. Special Instructions:</b>						
<ul style="list-style-type: none"> <li>• REMS #1 ( w/ FEMP's Stary and Peters ) / REMS #2 ( w/ FEMP's Warrick, Giacomini and Odebralski ) are assigned to East Zone.</li> <li>• Division/Group Supervisors must validate cost apportionment on 204's at the end of each shift. Contact Finance Section Chief for questions.</li> <li>• All resources utilizing water in excess of 100 gal must document water usage on the enclosed Water Usage Log. Submit with your time.</li> <li>• If you open a gate close the gate!!!</li> </ul>						
<b>8. Division/Group Communication Summary</b>						
Function	Channel	RX Frequency N/W	RX Tone/NAC	TX Frequency N/W	TX Tone/NAC	Mode
TACTICAL VTAC 11	12	151.1375N	156.7	151.1375N	156.7	A
MEDICAL-CALCORD	15	156.0750N	156.7	156.0750N	156.7	A
AIR TO GROUND TAC	14	159.2700N	192.8	159.2700N	192.8	A
EMERGENCY-GUARD	16	168.6250N		168.625N	110.9	A
<b>9. Prepared By (Resource Unit Leader)</b>			<b>Approved By (Planning Section Chief)</b>		<b>Date</b>	<b>Time</b>
BOBBY CAHAL			ANN MARX		09/30/2016	2200

## Division/Group Assignment List (ICS 204 WF)

<b>1. Incident Name:</b>			<b>3.</b>			
SOBERANES			<b>Branch:</b>		<b>Division/Group:</b>	
<b>2. Operational Period:</b>			<b>GG</b>			
<b>DAY</b>						
Date/Time From: 10/01/2016 0700      SAT		Date/Time To: 10/01/2016 1900      SAT				
<b>4. Operations Personnel</b>						
<b>OPERATIONS CHIEF</b>		JOHN ABELL (10/12) SHAUN CRAIG (10/12) (T)		<b>DIVISION/GROUP SUPERVISOR</b>		MIKE SWEANY (10/11)
<b>AIR ATTACK SUPERVISOR</b>		VAL LINCH (10/12) MARK NUNEZ (10/12)				
<b>5. Resources Assigned this Period</b>						
Strike Team / Task Force / Resource Designator		LWD	Leader	Number Persons	Drop Off PT./Time	Pick Up PT./Time
ENG3 LNF 81 E-10805		10/08	MATTHEW PRENTISS	5	RANA/0700	RANA/1900
ENG3 ENF 333 E-10806		10/08	RYAN WAGGONER	7	RANA/0700	RANA/1900
ENG3 PNF 323 E-10807		10/08	CLAYTON BECK	5	RANA/0700	RANA/1900
ENG6 FWF 654 E-10795		10/01	PRESTON T BRIDGES	4	RANA/0700	RANA/1900
ENG6 FIRESTORM 9903 E-10800		10/08	TACOMA MANUEL	3	RANA/0700	RANA/1900
CHIP TOUGH EQPT E-10816		10/11	JOSHUA ROBERTS	2	RANA/0700	RANA/1900
WTS2 KRITZ E-10131		10/05	DAVID HARVEY	1	RANA/0700	RANA/1900
TFLD O-11000		10/02	TIM WILSON	1	RANA/0700	RANA/1900
FEMP O-10930		10/05	DUSTIN KUNTZ	1	RANA/0700	RANA/1900
FEMT O-11270		10/02	SCOTT BLANDFORD	1	RANA/0700	RANA/1900
FEMT O-11469		10/03	DAVID MAZAIKA	1	RANA/0700	RANA/1900
<b>6. Control Operations/Work Assignments:</b>						
<ul style="list-style-type: none"> <li>Mop-up to the degree necessary to make the probability of escape very low while ensuring a safe work environment.</li> <li>Back haul equipment, trash and hose at the direction of the division.</li> <li>Division to work with READs and repair group in identifying and assisting where possible with fire suppression repair.</li> <li>SOFR Mark Helm in Divisions CC &amp; GG.</li> </ul>						
<b>8. Division/Group Communication Summary</b>						
Function	Channel	RX Frequency N/W	RX Tone/NAC	TX Frequency N/W	TX Tone/NAC	Mode
TACTICAL R5 T4	8	166.5500N		166.5500N		A
MEDICAL - CALCORD	15	156.0750N	156.7	156.0750N	156.7	A
AIR TO GROUND TAC	14	159.2700N	192.8	159.2700N	192.8	A
EMERGENCY	16	168.6250N		168.625N	110.9	A
<b>9. Prepared By (Resource Unit Leader)</b>			<b>Approved By (Planning Section Chief)</b>		<b>Date</b>	<b>Time</b>
BOBBY CAHAL			ANN MARX		09/30/2016	2200

## Division/Group Assignment List (ICS 204 WF)

<b>1. Incident Name:</b>			<b>3.</b>			
SOBERANES			<b>Branch:</b>	<b>Division/Group:</b>  <b>GG</b>		
<b>2. Operational Period: DAY</b>						
Date/Time From:	SAT	Date/Time To:	SAT			
10/01/2016 0700		10/01/2016 1900				
<b>4. Operations Personnel</b>						
<b>OPERATIONS CHIEF</b>	JOHN ABELL (10/12) SHAUN CRAIG (10/12) (T)		<b>DIVISION/GROUP SUPERVISOR</b>	MIKE SWEANY (10/11)		
<b>AIR ATTACK SUPERVISOR</b>	VAL LINCH (10/12) MARK NUNEZ (10/12)					
<b>7. Special Instructions:</b>						
<ul style="list-style-type: none"> <li><b>Avoid ground disturbance in areas marked with Seibert Stakes.</b></li> <li>REMS #1 ( w/ FEMP's Stary and Peters ) / REMS #2 ( w/ FEMP's Warrick, Giacomini and Odebralski ) are assigned to East Zone.</li> <li>Division/Group Supervisors must validate cost apportionment on 204's at end of shift. Contact the Finance Section Chief for questions.</li> <li>All resources utilizing water in excess of 100 gal must document water usage on the enclosed Water Usage Log. Submit with your time.</li> <li>If you open a gate close the gate!!!</li> </ul>						
<b>8. Division/Group Communication Summary</b>						
Function	Channel	RX Frequency N/W	RX Tone/NAC	TX Frequency N/W	TX Tone/NAC	Mode
TACTICAL R5 T4	8	166.5500N		166.5500N		A
MEDICAL - CALCORD	15	156.0750N	156.7	156.0750N	156.7	A
AIR TO GROUND TAC	14	159.2700N	192.8	159.2700N	192.8	A
EMERGENCY	16	168.6250N		168.625N	110.9	A
<b>9. Prepared By (Resource Unit Leader)</b>			<b>Approved By (Planning Section Chief)</b>		<b>Date</b>	<b>Time</b>
BOBBY CAHAL			ANN MARX		09/30/2016	2200



## Division/Group Assignment List (ICS 204 WF)

<b>1. Incident Name:</b>			<b>3.</b>			
SOBERANES			<b>Branch:</b>		<b>Division/Group:</b>	
<b>2. Operational Period:</b>			<b>SOUTH REPAIR GROUP</b>			
<b>DAY</b>						
Date/Time From: 10/01/2016 0700      SAT		Date/Time To: 10/01/2016 1900      SAT				
<b>4. Operations Personnel</b>						
<b>OPERATIONS CHIEF</b>		JOHN ABELL (10/12) SHAUN CRAIG (10/12) (T)		<b>DIVISION/GROUP SUPERVISOR</b>		ZANE BROWN (10/2)
<b>AIR ATTACK SUPERVISOR</b>		VAL LINCH (10/12) MARK NUNEZ (10/12)				
<b>5. Resources Assigned this Period</b>						
Strike Team / Task Force / Resource Designator		LWD	Leader	Number Persons	Drop Off PT./Time	Pick Up PT./Time
CRW2IA GE FORESTRY 7C C-10218		10/04	TOVAR ARMANDO	20	TORO/0700	TORO/1900
ENG6 AR E651 E-10520		10/07	MATTHEW FERGUSON	3	TORO/0700	TORO/1900
DOZ2 MOOSIOS E-10452		10/03	LOUIS MOOSIOS	2	TORO/0700	TORO/1900
EXCA GRAHAM E-10057		10/01	ROGER BROWN	2	TORO/0700	TORO/1900
MAST2 NORTHSTATE 186 E-10792		10/06	CRAIG HEADRICK	1	TORO/0700	TORO/1900
MAST2 MCKELLAR TREE E-10793		10/08	BRETT STRONG	2	TORO/0700	TORO/1900
WTS2 LITTLE BIG MAN #2 E-10656		10/10	THOMAS STROTHER	1	TORO/0700	TORO/1900
TFLD O-11196		10/01	GEORGE CORREA	1	TORO/0700	TORO/1900
HEQB O-11398		10/02	KEITH MCMILLEN	1	TORO/0700	TORO/1900
HEQB O-11405		10/06	PAUL PELLEGRINI	1	TORO/0700	TORO/1900
HEQB O-11412		10/03	AUSTIN STYLER	1	TORO/0700	TORO/1900
HEQB (T) O-10328		10/08	THOMAS KROCK	1	TORO/0700	TORO/1900
FEMP O-11286		10/03	MATT DEPOLO	1	TORO/0700	TORO/1900
FEMP O-11287		10/03	DAVE WOODS	1	TORO/0700	TORO/1900
SOFR O-11399		10/08	NATHAN LEATHERMAN	1	TORO/0700	TORO/1900
SOFR (T) O-11285		10/03	MATTHEW LUCAS	1	TORO/0700	TORO/1900
ARCH O-11013		10/13	JOSHUA MASSEY	1	TORO/0700	TORO/1900
REAF O-11150		10/02	JONATHAN FREEMAN	1	TORO/0700	TORO/1900
REAF O-11226		10/02	DYLAN MCCOY	1	TORO/0700	TORO/1900
<b>8. Division/Group Communication Summary</b>						
Function	Channel	RX Frequency N/W	RX Tone/NAC	TX Frequency N/W	TX Tone/NAC	Mode
TACTICAL CDF T1	11	151.2575N	192.8	151.2575N	192.8	A
MEDICAL CALCORD	15	156.0750N	156.7	156.0750N	156.7	A
AIR TO GROUND TAC	14	159.2700N	192.8	159.2700N	192.8	A
EMERGENCY GUARD	16	168.6250N		168.6250N	110.9	A
<b>9. Prepared By (Resource Unit Leader)</b>			<b>Approved By (Planning Section Chief)</b>		<b>Date</b>	<b>Time</b>
BOBBY CAHAL			ANN MARX		09/30/2016	2200

## Division/Group Assignment List (ICS 204 WF)

<b>1. Incident Name:</b>			<b>3.</b>			
SOBERANES			<b>Branch:</b>		<b>Division/Group:</b>  <b>SOUTH REPAIR GROUP</b>	
<b>2. Operational Period: DAY</b>						
Date/Time From: 10/01/2016 0700 SAT		Date/Time To: 10/01/2016 1900 SAT				
<b>4. Operations Personnel</b>						
<b>OPERATIONS CHIEF</b>		JOHN ABELL (10/12) SHAUN CRAIG (10/12) (T)		<b>DIVISION/GROUP SUPERVISOR</b>		ZANE BROWN (10/2)
<b>AIR ATTACK SUPERVISOR</b>		VAL LINCH (10/12) MARK NUNEZ (10/12)				
<b>5. Resources Assigned this Period</b>						
Strike Team / Task Force / Resource Designator		LWD	Leader	Number Persons	Drop Off PT./Time	Pick Up PT./Time
<b>6. Control Operations/Work Assignments:</b>						
<ul style="list-style-type: none"> <li>Assess &amp; implement fire suppression repair as directed by Resource Advisers.</li> <li>Patrol &amp; mop-up to prevent the fire from escaping containment lines.</li> <li>If found, assist in the back haul of excess equipment &amp; trash.</li> </ul>						
<b>7. Special Instructions:</b>						
<ul style="list-style-type: none"> <li>REMS #1 ( w/ FEMP's Stary and Peters ) / REMS #2 ( w/ FEMP's Warrick, Giacomini and Odebralski ) are assigned to East Zone.</li> <li>Division/Group Supervisors must validate cost apportionment on 204's at end of shift. Contact the Finance Section Chief for questions.</li> <li>All resources utilizing water in excess of 100 gal must document water usage on the enclosed Water Usage Log. Submit with your time.</li> <li>If you open a gate close the gate!!!</li> </ul>						
<b>8. Division/Group Communication Summary</b>						
Function	Channel	RX Frequency N/W	RX Tone/NAC	TX Frequency N/W	TX Tone/NAC	Mode
TACTICAL CDF T1	11	151.2575N	192.8	151.2575N	192.8	A
MEDICAL CALCORD	15	156.0750N	156.7	156.0750N	156.7	A
AIR TO GROUND TAC	14	159.2700N	192.8	159.2700N	192.8	A
EMERGENCY GUARD	16	168.6250N		168.6250N	110.9	A
<b>9. Prepared By (Resource Unit Leader)</b>			<b>Approved By (Planning Section Chief)</b>		<b>Date</b>	<b>Time</b>
BOBBY CAHAL			ANN MARX		09/30/2016	2200

## Division/Group Assignment List (ICS 204 WF)

<b>1. Incident Name:</b>			<b>3.</b>			
SOBERANES			<b>Branch:</b>		<b>Division/Group:</b>	
<b>2. Operational Period:</b>			<b>WEST REPAIR</b>			
<b>DAY</b>						
Date/Time From: 10/01/2016 0700      SAT		Date/Time To: 10/01/2016 1900      SAT				
<b>4. Operations Personnel</b>						
<b>OPERATIONS CHIEF</b>		JOHN ABELL (10/12) SHAUN CRAIG (10/12) (T)		<b>DIVISION/GROUP SUPERVISOR</b>		RALPH SWEENEY (10/1) TIMOTHY WHORTON (10/1)
<b>AIR ATTACK SUPERVISOR</b>		VAL LINCH (10/12) MARK NUNEZ (10/12)				
<b>5. Resources Assigned this Period</b>						
Strike Team / Task Force / Resource Designator		LWD	Leader	Number Persons	Drop Off PT./Time	Pick Up PT./Time
CRW2IA ASI ARDEN 6A C-10224		10/04	JEFFERY HARRISON	20	MOLERA/0600	MOLERA/1800
ENG3 MNF 42 E-10808		10/08	ANDREW J QUICK	5	MOLERA/0600	MOLERA/1800
ENG3 LPF 342 E-10821.4		10/10	BRAD CHRISTENSEN	5	MOLERA/0600	MOLERA/1800
ENG3 LPF 37 E-10821.3		10/10	LEWIS DELAROSA	5	MOLERA/0600	MOLERA/1800
ENG6 MTO PATROL91 E-10819		10/14	DANA ST. OEGGER	2	MOLERA/0600	MOLERA/1800
DOZ2 VENTANA RANCH 119 E-10697		10/08	ROBIN MULLNIX	1	MOLERA/0600	MOLERA/1800
EXCA2 GRAHAM E-10670		10/01	CLAYTON GRAHAM	1	MOLERA/0600	MOLERA/1800
MAST BORDGES TIMBER 2 E-10396		10/10	JUAN LOPEZ	1	MOLERA/0600	MOLERA/1800
MAST BORDGES TIMBER 1 E-10395		10/10	JOHN THOULANDER	1	MOLERA/0600	MOLERA/1800
AMBU AMR 66 E-10315		10/03		2	MOLERA/0600	MOLERA/1800
WTS2 DUST BUSTERS E-10161		10/11	GREG HOLT	1	MOLERA/0600	MOLERA/1800
WTS2 DUST BUSTERS E-10476		10/01	BRIAN SCOTT	1	MOLERA/0600	MOLERA/1800
WTT2 INF 21 E-10023		10/05	LUCAS HURLEY	2	MOLERA/0600	MOLERA/1800
TFLD O-11109		09/30	MEL TENNESON	1	MOLERA/0600	MOLERA/1800
TFLD O-11193		09/30	SKY NELSON	1	MOLERA/0600	MOLERA/1800
STEN (T) E-10821.7		10/10	JEFF PINA	1	MOLERA/0600	MOLERA/1800
HEQB O-11197		10/01	JAMES RUST	1	MOLERA/0600	MOLERA/1800
HEQB (T) O-11299		10/03	MICHAEL WEST	1	MOLERA/0600	MOLERA/1800
FOBS (T) O-11205		09/30	JAMES HEALY	1	MOLERA/0600	MOLERA/1800
FEMP O-11151		10/06	JEFFREY DACPANO	1	MOLERA/0600	MOLERA/1800
<b>8. Division/Group Communication Summary</b>						
Function	Channel	RX Frequency N/W	RX Tone/NAC	TX Frequency N/W	TX Tone/NAC	Mode
TACTICAL NIFC T3	7	168.6000N		168.6000N		A
MEDICAL CALCORD	15	156.0750N	156.7	156.0750N	156.7	A
AIR TO GROUND TAC	14	159.2700N	192.8	159.2700N	192.8	A
EMERGENCY GUARD	16	168.6250N		168.6250N	110.9	A
<b>9. Prepared By (Resource Unit Leader)</b>			<b>Approved By (Planning Section Chief)</b>		<b>Date</b>	<b>Time</b>
BOBBY CAHAL			ANN MARX		09/30/2016	2200



## Division/Group Assignment List (ICS 204 WF)

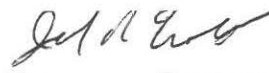
<b>1. Incident Name:</b>			<b>3.</b>			
SOBERANES			<b>Branch:</b>		<b>Division/Group:</b>	
<b>2. Operational Period:</b>			<b>WEST REPAIR</b>			
<b>DAY</b>						
Date/Time From: 10/01/2016 0700 SAT		Date/Time To: 10/01/2016 1900 SAT				
<b>4. Operations Personnel</b>						
<b>OPERATIONS CHIEF</b>		JOHN ABELL (10/12) SHAUN CRAIG (10/12) (T)		<b>DIVISION/GROUP SUPERVISOR</b>		RALPH SWEENEY (10/1) TIMOTHY WHORTON (10/1)
<b>AIR ATTACK SUPERVISOR</b>		VAL LINCH (10/12) MARK NUNEZ (10/12)				
<b>5. Resources Assigned this Period</b>						
Strike Team / Task Force / Resource Designator		LWD	Leader	Number Persons	Drop Off PT./Time	Pick Up PT./Time
FEMP O-11364		10/05	ZACHARY BROWN	1	MOLERA/0600	MOLERA/1800
FEMP O-11283		10/03	DAVID WILLIAMS	1	MOLERA/0600	MOLERA/1800
FEMP O-11279		10/03	CHRIS CINCOTTA	1	MOLERA/0600	MOLERA/1800
SOF2 O-11396		10/08	CRAIG MARTIN	1	MOLERA/0600	MOLERA/1800
ARCH O-10995		10/03	ROBERT WEAVER	1	MOLERA/0600	MOLERA/1800
ARCH O-11012		10/13	EMERY MANUEL	1	MOLERA/0600	MOLERA/1800
REAF O-11227		10/02	MICHAEL BOROWSKI	1	MOLERA/0600	MOLERA/1800
REAF O-11228		10/02	MATT DAIGLE	1	MOLERA/0600	MOLERA/1800
REAF O-11362		10/08	JAMES HEINTZ	1	MOLERA/0600	MOLERA/1800
<b>6. Control Operations/Work Assignments:</b>						
<ul style="list-style-type: none"> <li>Assess &amp; implement fire suppression repair as directed by Resource Advisers.</li> <li>Patrol &amp; mop-up to prevent the fire from escaping containment lines.</li> <li>If found, assist in the back haul of excess equipment &amp; trash.</li> </ul>						
<b>7. Special Instructions:</b>						
<ul style="list-style-type: none"> <li>REMS #1 ( w/ FEMP's Stary and Crane ) / REMS #2 ( w/ FEMP's Warrick and Odebralski ) are assigned to East Zone.</li> <li>Division/Group Supervisors must validate cost apportionment on 204's at end of shift. Contact the Finance Section Chief for questions.</li> <li>All resources utilizing water in excess of 100 gal must document water usage on the enclosed Water Usage Log. Submit with your time.</li> <li>If you open a gate close the gate!!!</li> </ul>						
<b>8. Division/Group Communication Summary</b>						
Function	Channel	RX Frequency N/W	RX Tone/NAC	TX Frequency N/W	TX Tone/NAC	Mode
TACTICAL NIFC T3	7	168.6000N		168.6000N		A
MEDICAL CALCORD	15	156.0750N	156.7	156.0750N	156.7	A
AIR TO GROUND TAC	14	159.2700N	192.8	159.2700N	192.8	A
EMERGENCY GUARD	16	168.6250N		168.6250N	110.9	A
<b>9. Prepared By (Resource Unit Leader)</b>			<b>Approved By (Planning Section Chief)</b>		<b>Date</b>	<b>Time</b>
BOBBY CAHAL			ANN MARX		09/30/2016	2200

**AIR OPERATIONS SUMMARY**  
**ICS 220**

Prepared By: **John Crotty**  
AOBD

Prepared Date: **09/30/2016**

Prepared Time: **1630**



<b>1. INCIDENT NAME: Soberanes Fire</b>	<b>2. OPS PERIOD DATE: 10/01/2016</b>	<b>START TIME: 0700</b>	<b>END TIME: 2100</b>	<b>SUNRISE: 0702</b>	<b>SUNSET: 1850</b>
---	---------------------------------------	-------------------------	-----------------------	----------------------	---------------------

<p><b>3. REMARKS (Safety Notes, Hazards, Air Operations Special Equipment, etc.):</b> Track all dipsite locations/number of dips/gallons taken. Track all drop locations/number of drops/gallons dropped. All GPS data to be collected in <b>DEGREES, DECIMAL MINUTES</b> format.  <b>AVOID</b> Aerial Application of Retardant/Foam/Agent within 300' of Waterways, Bodies of Water, etc.  <b>If Retardant/Foam/Agent</b> is dropped within these areas immediately notify the AOBD and provide the following information: Lat/Long, estimated number of gallons and a map detailing the area.  <b>Fly with Transponder 1255.</b></p> <p>Air Attack Briefing 132.0250 AM (A-10002)</p> <p>For scheduling recon flights contact Ranch HB communications @ 925-407-6353</p> <p>All rotor wing aircraft will be on the ground at 1900.  TUSI Advisory 126.200 for restricted airspace.</p>	<p><b>4. Helibase Information:</b>  <b>Name: Ranch Helibase</b>  <b>Latitude: 36 26.133</b>  <b>Longitude: 121 37.871</b></p> <p><b>Name: Miller Helibase / MRB</b>  <b>Latitude: 36 14.753</b>  <b>Longitude: 121 25.811</b></p>	<p><b>5. TFR's:</b>  <b>Request #: A-10129</b>  <b>Polygon: NM</b>  <b>Altitude: 9000' MSL</b></p> <p><b>NOTAMS: 6/9747</b>  <b>Frequency: 119.1250</b></p> <p><a href="http://tfr.faa.gov/tfr2/list.html">http://tfr.faa.gov/tfr2/list.html</a></p>
--	---	--

6. PERSONNEL	NAME	PHONE #	7. FREQUENCIES	TX	TONE	RX	TONE	AM/FM	8. MEDIVAC SHIP INFORMATION	
									Day:	Night:
AOBD	John Crotty	805-440-6186	<b>A/G Command</b>	159.4500	192.8 (16)	159.4500	192.8 (16)	FM	<b>Name: H-407</b>	
AOBD (T)	Brian Sexton	805-350-3717		A-10006					Make/Model: Bell UH-1H	
ASGS	Al Driesbach	805-703-0649	<b>A/G Tactical</b>	159.2700	192.8 (16)	159.2700	192.8 (16)	FM	Location: Hunter Liggett HB	
ASGS	Curt Warner	805-478-1231		A-10005					Request Procedure for this	
									Aircraft. See Medical Plan.	
									<b>H-407 – Hoist capable</b>	
<b>Ranch Helibase</b>		925-407-6353 831-659-0220								
HEB1 - Ranch	Don Clark	928-245-2539	<b>A/A Primary</b>	119.1250	A-10,000	119.1250			<b>Mercy Air 20- Air Ambulance</b>	
HEB1(t)	Chad Bergren	541-219-2594							<b>Location: Hunter Liggett</b>	
Miller Retardant Plant	Will remain open	831-674-5689	<b>A/A Secondary</b>	123.8750	A-10001	123.8750			831-385-0302	
HLCO	Dave Phillips	209-770-0517	<b>AIR TACTICS</b>	169.0875	A-10004	169.0875			Cal Star 5- air ambulance	
HLCO	Jonathan Harris	805-550-7903	<b>TOLC</b>	123.0250		123.0250		AM	Location: Salinas	
ATGS	Mark Nunez	805-975-5227	<b>DECK</b>	168.3500		168.3500		FM		
ATGS	Val Linch	661-487-2636	<b>Air Guard</b>	168.6250	110.9 (1)	168.6250		FM		

**HELICOPTERS**

FAA N#	T	MAKE/ MODEL	BASE	START	AVAIL	REMARKS	FAA N#	T	MAKE/MODEL	BASE	START	AVAIL	REMARKS
N613CK	1	SH-61 EU	Ranch	0700	0800	A-10254 Croman	N371SH	3	Astar	Ranch	0700	0800	A-10200 Shorthaul
N4035S H-783	1	S-64E EU	Ranch	0700	0800	A-10023 Siller	N383SH	3	Bell 206 L3	Toro	0700	0800	A-10211 CWN Recon/IR
N471CH	1	CH-47 EU	Ranch	0700	0800	A-10243 Columbia	N911FS	3	Bell 407	Ranch	0700	0800	A-10032 HLCO CWN
N2FH	1	S-70 EU	Ranch	0700	0800	A-10244 Firehawk	N718GH H-535	3	Astar B3	Ranch	0700	0800	A-10263 EU
CFXFT	1	K-Max EU	Ranch	0700	0800	A-10089 Heliquest							
							N205HQ H-530	2	Bell 205-A1++	Ranch	0700	0800	A-10067 EU
							N205WW H-527	2	Bell 205-A1++	Ranch	0700	0800	A-10270 Heli/Burn EU
							N205BT H-517	2	Bell 205 A1++	Ranch	0700	0800	A-10142 PSD EU
							N689H	2	Bell 205++	Ranch	0700	0800	A-10255 Rappel EU
							N107Z H-507	2	Bell 209	Ranch	0700	0800	A-10193

**FIXED WING**

N108SA	1	690A	MRY	0700	0800	A-10175							
N690RA AA07	1	690A	MRY	0700	0800	A-10021							

Missions:	Aircraft	AVAIL	Departure Point	Destination	
<b>Air Attack</b>		0800	<b>MRY (Monterey)</b>	Fire	Provide Tactical Aerial Support
<b>Bucket Support</b>	Varies	0800	<b>Ranch HB</b>	Fire	Bucket support requested by Ops, Branch, Division or Air Attack
<b>Cargo</b>	T-2, T-3	0800	<b>Ranch HB</b>	Fire	Type 2 or Type 3 Helicopter as requested
<b>PAX</b>	T-2, T-3	0800	<b>Ranch HB, ICP</b>	Fire	Type 2 or Type 3 Helicopter as requested
<b>MEDIVAC</b>	H-407	0800	<b>Hunter Liggett</b>	As Directed	Request through ICP Communications & MEDL on Command Repeater. Give location: lat/long if known. Check Medical plan/IAP.
<b>Recon/Mapping</b>	T-3	0800	<b>Ranch HB, ICP</b>	Fire	As requested/7AC(3SH) IR mapping.
<b>Retardant &amp; Lead Plane</b>	Varies	Varies	<b>Various Tanker Bases</b>	Fire	Request through Air Attack via Initial Air/Ground. Give location and ground contact.
<b>IA within TFR</b>		0800	<b>Ranch HB</b>	As Directed	Aircraft to be available for IA within TFR. IA missions within TFR are requested thru OPS or Air Attack. Notify LP Dispatch
<b>Initial Attack Assistance</b>	Varies	0800	<b>Ranch HB</b>	As requested	Will be requested through LP Dispatch.



# Soberanes- SAFETY MESSAGE

INCIDENT: **Soberanes**

DATE: **10.1.2016**

TIME: **0700-1900 Day**

## Major Hazards and Risks:

- **Falling apparently live trees in camp and on the line, snags**
- **Steep, narrow and curvy roads up to the incident**
- **Ash pits, stump holes**
- **Hiking in rough, steep terrain**
- **Rolling material – Rocks**
- **Heavy equipment operations**
- **Crew fatigue**

## Narrative:

You and your family are the most important asset to this team. Be safe, slow down and think about what the plan is and is it attainable without injury. If not don't do it. Just because you pushed the boundaries last time and succeeded, you are rolling the dice. Do not normalize deviation of the fire service safety standards set fourth. It will catch up to you one day.

## Life First

**1. Life First - everyone goes home.** We cannot accept any loss of life; while we are well aware of the challenges and the hazards our people face every day in the fire environment, together we can work to eliminate unnecessary exposure and increase the odds that everyone goes home in 2016.

- It means that knowing the dangers we face, we still expect that our personnel will not engage unless they can do so with the greatest margin of safety.
- We expect our emergency responders to refuse assignments where hazards cannot be satisfactorily addressed.
- We ask people to take risks in fire every day, sending them to work in environments that are known to be hazardous, but we should only do so where the values we have determined threatened justify the risks and the probability of success is high.
- The way to achieve our goal of zero fatalities is to train, to practice risk management, to think, to communicate, and to foster a learning environment to seek smarter ways to meet our objectives in every situation, and to learn and improve every day.

## First Hand Crew 1938



Since the inception of wildland firefighting, the safety of firefighters has continued to evolve. Unfortunately many of the improvements have evolved due to tragic accidents and deaths. What is important now is that we learn from those accidents and honor the sacrifices made by those individuals by doing our job with an emphasis on the safety and adhering to our Fire Orders and Watch Outs. Remember Life First.

Incident Safety Officers: Rick Bertram SOE2 805-471-8076, Tom Zeulner SOF2 805-536-8057, Curt Schwarm SOF2 t 805-620-2561





**INCIDENT RISK ANALYSIS**

**SOBERANES FIRE CA-BEU-003422**

**(ICS 215a) Day Shift**

DIV/BR	HAZARDOUS ACTIONS / CONDITIONS	MITIGATIONS / WARNINGS / REMEDIES
ALL	TRAFFIC HAZARDS AND DRIVING	<ul style="list-style-type: none"> <li>• Use caution while driving on all incident roads.</li> <li>• <b>Drive defensively!</b> Expect the unexpected around every curve.</li> <li>• Watch for other vehicles, distracted drivers, rocks and debris on the roadway.</li> <li>• Beware of heavy local traffic on Carmel Valley Road, Hwy. 68 and Hwy. 1.</li> <li>• Drive with headlights on; wear seatbelts, use chock blocks, keep windshields clean, look before backing; and use backers when available.</li> <li>• <b>Roads are narrow with steep drop-offs.</b></li> <li>• Flagging on the side of North Coast Ridge road indicates a false berm or soft shoulder created by heavy equipment.</li> </ul>
ALL	WEATHER AND FIRE BEHAVIOR	<ul style="list-style-type: none"> <li>• <b>With the continued high winds there is potential for Extreme Fire Behavior.</b></li> <li>• <b>Continued high winds with higher RH and Sunday winds increasing.</b></li> <li>• <b>With the wind, look for more issues with hazard trees in afternoon.</b></li> <li>• <b>Stay hydrated. Monitor resources for heat related illness.</b></li> <li>• Communicate any observed changes in weather and fire behavior.</li> <li>• Maintain adequate escape routes and safety zones. Set trigger points.</li> <li>• Expect the unexpected with drought stricken fuels at critically low fuel moistures.</li> <li>• <b>Historical trends indicate changes in the fire environment support large fire growth.</b></li> </ul>
Tassajara CC	LINE CONSTRUCTION	<ul style="list-style-type: none"> <li>• Conduct thorough briefings for all personnel involved (inside rear cover IRPG).</li> <li>• Ensure LCES in place prior to engagement (IRPG p. 7).</li> <li>• Establish adequate safety zones (IRPG p.8) and escape routes.</li> <li>• Use Downhill Line Checklist (IRPG p. 9).</li> <li>• Use "Look Up, Look Down, Look Around" procedures (IRPG p. 3-4)</li> <li>• Utilize Risk Management Process (IRPG p.1).</li> </ul>
ALL	MOP-UP	<ul style="list-style-type: none"> <li>• Evaluate areas for hazard trees and locate stump holes for avoidance.</li> <li>• Monitor fatigue; adjust shifts to increase rest where appropriate.</li> <li>• Provide motivation to workers to maintain situational awareness and avoid complacency.</li> <li>• Evaluate mop up distances against what is safe and necessary.</li> <li>• Review and follow "Look Up, Look Down, Look Around" procedures (IRPG p. 3-4).</li> <li>• Survey your work area. Assess the hazards and implement appropriate mitigations.</li> </ul>
ALL	COMMUNICATIONS	<ul style="list-style-type: none"> <li>• Share your Situational Awareness with those who also have a need.</li> <li>• <b>Radio Communications may be poor in some areas. Use human repeaters.</b></li> <li>• Ensure all personnel are familiar with the incident communications plan. The Soberanes Fire is using 2 different groups. Ensure you are using the proper one.</li> <li>• Don't be afraid to over communicate.</li> <li>• Ensure everyone gets a proper and thorough briefing.</li> <li>• Know who you are working for.</li> </ul>
ALL	AVIATION OPERATIONS	<ul style="list-style-type: none"> <li>• Use risk analysis to determine if any given flight is necessary.</li> <li>• Use air to ground tactical frequency when assigned a specific aircraft.</li> <li>• Use air to ground command frequency to communicate with air attack.</li> <li>• Use concise statements &amp; clock directions when directing aircraft IRPG pg. 57.</li> <li>• Maintain good separation between ground forces &amp; water/retardant drops.</li> <li>• Review and follow "Aviation Watch-Out Situations" on page 44, IRPG.</li> <li>• Remember visibility changes minute by minute here on the Soberanes Fire.</li> </ul>
ALL	HEAVY EQUIPMENT OPERATIONS	<ul style="list-style-type: none"> <li>• Ensure communications are established with operators.</li> <li>• Use hand signals if other communications are unavailable.</li> <li>• Maintain a 50'-100' exclusion area around equipment.</li> <li>• When in timber, increase distance to 2.5 times the height of the tress.</li> <li>• Never work below or behind heavy equipment.</li> </ul>
ALL	ENVIRONMENTAL HAZARDS	<ul style="list-style-type: none"> <li>• Keep alert for wildlife, cattle, rattlesnakes, bees, and insects.</li> <li>• Watch footing and hand placement around rocks.</li> <li>• Determine if any personnel under your control are allergic to bee stings.</li> <li>• Ensure all personnel can identify poison oak in work and camp areas.</li> <li>• Identify employees who are highly receptive to poison oak and minimize their exposure.</li> <li>• Utilize line medics at the earliest appearance of allergic reactions.</li> </ul>
ALL	STRUCTURE PROTECTION	<ul style="list-style-type: none"> <li>• Review Structure Protection; IRPG pages 12-16.</li> <li>• Do not commit to stay at a structure unless the area around the structure represents an adequate safety zone.</li> <li>• Set trigger points to disengage and allow adequate time to relocate to primary and secondary safety zones.</li> <li>• Look for propane tanks and other hazardous materials.</li> </ul>

INCIDENT NAME:

**Soberanes Fire**





Operational Period: 0700-1900

**October 1, 2016**

DATE AND TIME PREPARED:

**September 30, 2016 1130 hours**



MEDICAL PLAN ICS 206		1. INCIDENT NAME	2. DATE PREPARED	3. TIME PREPARED	4. OPERATIONAL PERIOD			
		<b>Soberanes</b>	9/30/2016	2000	Day 10/1/2016 0700-1900			
5. INCIDENT MEDICAL AID STATIONS								
MEDICAL AID STATIONS		LOCATION			PARAMEDICS			
Frontline Medical Trailer		Toro ICP / Rana Camp			YES	NO		
					X			
6. TRANSPORTATION								
A. AIR AMBULANCES								
NAME		LOCATION		PHONE		PARAMEDICS		
Kern County H407 ALS / Hoist / Day Missions Only		Fort Hunter Liggett		Soberanes Comms		YES	NO	
						X		
B. GROUND AMBULANCES & REM TEAMS								
NAME		LOCATION			PARAMEDICS			
MCRFD M5563 (Incident Dedicated)		Rana Camp 24 Hours			Command	YES	NO	
AMR M66 (Incident Dedicated)		Big Sur 24 Hours			Command	X		
AMR M24, M35, M36 (Non-Dedicated)		Big Sur / Soledad / King City			9-1-1	X		
FHL Fire Department (Non-Dedicated)		Fort Hunter Liggett			9-1-1	X		
7. HOSPITALS								
NAME	ADDRESS	TRAVEL TIME		PHONE	HELIPAD		BURN CTR	
		AIR	GRND		YES	NO	YES	NO
Natividad Medical Center (Level 2 Trauma)	1441 Constitution Blvd. Salinas, CA N 36 41.85 W 121 38.07	15 Min	30 Min	(831) 424-9461	X			X
Salinas Valley	450 E. Romie Ln. Salinas, CA	N/A	15 Min	(831) 757-2673		X		X
CHOMP	23625 Holman Highway Monterey, CA	N/A	30 Min	(831) 624-1945		X		X
MEE Memorial	300 Canal St. King City, CA N 36 12.33 W 121 07.95	10 Min	1.75 Hr	(831) 385-7220	X			X
Santa Clara Valley Medical Center (LVL 1 Trauma, Burn Center)	751 Bascom Ave. San Jose, CA 95128 N 37 18.85 W 121 56.05	36 Min	1.5 Hr	(408) 885-6912	X		X	
Community Regional (LVL 1 Trauma, Burn Center)	2823 Fresno St. Fresno, CA N 36 44.62 W 119 47.12	45 Min	2.5 Hr	(559) 459-7430	X		X	
8. MEDICAL EMERGENCY PROCEDURES								
<b>LINE MEDICAL EMERGENCY DAY PLAN:</b> Crew Supervisor to contact Division Supervisor/Operations with patient complaint, condition and location. Division Supervisor/Operations contacts Communications: <ul style="list-style-type: none"> <li>• Division Supervisor or *POC to use "Medical Incident Report" worksheet on next page</li> <li>• Division Supervisor or *POC will run medical emergency on the command channel</li> <li>• Communications contacts Medical Unit Leader on Command channel or (cell phone, list number)</li> <li>• Medical Unit Leader position is responsible for: <ol style="list-style-type: none"> <li>1. Go to incident Communications location.</li> <li>2. Ensure Communications dispatches appropriate ground/air transport resources.</li> <li>3. Notify receiving hospital of injury status.</li> <li>4. Develop primary and contingency transport plan</li> <li>5. Notify Safety, Logistics, Operations</li> </ol> </li> </ul>					<b>CAMP MEDICAL EMERGENCY 24 HOUR PLAN</b> Contact incident Communications with patient complaint, condition and location, via LOGs Net or Command frequency as needed. <ul style="list-style-type: none"> <li>• Medical Unit Leader will ensure contacts made to: <ul style="list-style-type: none"> <li>• Safety, Logistics, Operations</li> </ul> </li> <li>• Medical Unit Leader will: <ol style="list-style-type: none"> <li>1. Contact incident Communications to dispatch ground / air transport resources.</li> <li>2. Notify receiving hospital of injury status.</li> <li>3. Develop primary and contingency transport plan.</li> </ol> </li> </ul> <p>*POC (Point of Contact) and Operations</p>			
ICS 206		9. PREPARED BY: (Medical Unit Leader) Devon Haggie MEDL 			10. REVIEWED BY: (Safety Officer) Rick Bertram SOF2 			

## Medical Incident Report

**Use items one through nine to communicate situation to communications/dispatch.**

**1. CONTACT COMMUNICATIONS DECLARE: "MEDICAL EMERGENCY" OR "NON-EMERGENCY MEDICAL TRANSPORT"**  
*Ex: "Communications, Div. Alpha. Stand-by for a medical emergency on Div. Alpha" (If life threatening request designated frequency be cleared for emergency traffic.)*

**2. INCIDENT STATUS:** Provide incident summary and command structure.

- **Nature of Injury/Illness** Describe the injury (Ex: Broken leg with bleeding) \_\_\_\_\_
- **Incident Name** Geographic Name + "Medical" (Ex: Trout Meadow Medical) \_\_\_\_\_
- **Incident Commander (Division Sup. or designee)** Name of IC \_\_\_\_\_
- **Patient Care** Name of Care Provider (Ex: EMT Smith) \_\_\_\_\_

**3. INITIAL PATIENT ASSESSMENT:** Complete this section for each pt. This is only a brief, initial assessment. Provide additional pt. info after completing this report.

- **Number of Patients:** \_\_\_\_\_ - **Male / Female:** \_\_\_\_\_ - **Age:** \_\_\_\_\_ - **Weight:** \_\_\_\_\_
- **Conscious?**  YES  NO = MEDEVAC! - **Breathing?**  YES  NO = MEDEVAC!
- **Mechanism of Injury** What caused the injury? \_\_\_\_\_
- **Location, Lat/Long** (Datum WGS84) Ex: N 40° 42.45' x W 123° 03.24' \_\_\_\_\_

**4. SEVERITY OF EMERGENCY: TRANSPORT PRIORITY**

SEVERITY	TRANSPORT PRIORITY
<input type="checkbox"/> <b>URGENT-RED</b> Life threatening injury or illness. <i>Ex: Unconscious, difficulty breathing, bleeding severely, 2° - 3° burns more than 4 palm sizes, heat stroke, disoriented.</i>	Ambulance or MEDEVAC helicopter. Evacuation need is <b>IMMEDIATE.</b>
<input type="checkbox"/> <b>PRIORITY-YELLOW</b> Serious Injury or illness. <i>Ex: Significant trauma, not able to walk, 2° - 3° burns not more than 1-2 palm sizes.</i>	Ambulance or consider air transport if at remote location. Evacuation may be <b>DELAYED.</b>
<input type="checkbox"/> <b>ROUTINE-GREEN</b> Not a life threatening injury or illness. <i>Ex: Sprains, strains, minor heat-related illness.</i>	Non-Emergency. Evacuation considered <b>Route of Convenience.</b>

**5. TRANSPORT PLAN:**

**Air Transport:** (Agency Aircraft Preferred)

- Helispot
- Short-haul/Hoist
- Life Flight
- Other

**Ground Transport:**

- Self-Extract
- Carry-Out
- Ambulance
- Other

**6. ADDITIONAL RESOURCE/EQUIPMENT NEEDS:**

- Paramedic/EMT(s)
- SKED/Backboard/C-Collar
- Crew(s)
- Burn Supplies
- Oxygen
- Trauma Bag
- Medication(s)
- IV/Fluid(s)
- Cardiac Monitor/AED
- Other (i.e. splints, rope rescue, wheeled litter)

**7. COMMUNICATIONS:**

- Run Medical Emergency on Command
- Coordinate with air ambulance on CALCORD tone 6

**8. EVACUATION LOCATION:**

- **Lat/Long** (Datum WGS84) EX: N 40 42.45' x W 123 03.24' \_\_\_\_\_
- **Patient's ETA to Evacuation Location:** \_\_\_\_\_
- **Helispot/Extraction Size and Hazards:** \_\_\_\_\_

**9. CONTINGENCY:** If primary options fail, what actions can be implemented in conjunction with primary evacuation method? Be thinking ahead...

---



---

**REMEMBER:** -Confirm ETA's of resources ordered -Act according to your level of training  
 - If air or ground ambulance is DELAYED: Package and transport patient to rendezvous with incoming Ambulance.  
 Re-route EMS helicopter to rendezvous point as appropriate.



INCIDENT RADIO COMMUNICATIONS PLAN			Incident Name WEST OPERATIONS (DPH radio Group 14)			Date/Time Prepared 9/30/2016 1900HRS.		Operational Period Date/Time 10/1-10/2/2016 0700 - 0700		
Ch #	Function	Channel Name/Trunked Radio System Talkgroup	Assignment	RX Freq N or W	RX Tone/NAC	TX Freq N or W	Tx Tone/NAC	Mode A, D or M	Remarks	
1	COMMAND	<b>C10</b> Lighthouse	ALL DIVISIONS	170.4125N		165.9625N	136.5	A	ALL REPEATERS IN WEST	
2	COMMAND	<b>C34</b> Double Cone	ALL DIVISIONS	170.0875N		162.1875N	136.5	A	OPERATIONS IS LINKED	
3	COMMAND	<b>C40</b> Ander' Peak	ALL DIVISIONS	163.1500N		172.8125N	136.5	A	BACK TO ICP	
4	COMMAND							A		
5	COMMAND	<b>C21</b> Junip. Serra	ALL DIVISIONS	166.3125		172.6750	136.5	A		
6	TACTICAL	<b>NIFC T2</b>		168.2000		168.2000		A		
7	TACTICAL	<b>NIFC T3</b>	<b>WEST REPAIR</b>	168.6000		168.6000		A		
8	TACTICAL	<b>NIFC T1</b>		168.0500		168.0500		A		
9	TACTICAL	<b>VFIRE 26</b>		154.3025	156.7	154.3025	156.7	A		
10	TACTICAL	<b>SPEC A</b>		151.1450	192.8	151.1450	192.8	A		
11	TACTICAL	<b>CDF T1</b>		151.2575	192.8	151.2575	192.8	A		
12	TACTICAL	<b>VTAC 14</b>		159.4725	156.7	159.4725	156.7	A		
13	A/G CMD	<b>A/G CMD</b>	ALL DIVISIONS	159.4500	192.8	159.4500	192.8	A		
14	A/G TAC	<b>A/G TAC</b>	ALL DIVISIONS	159.2700	192.8	159.2700	192.8	A		
15	MEDICAL	<b>CALCORD</b>	ALL DIVISIONS	156.0750	156.7	156.0750	156.7	A	MEDICAL COORDINATION	
16	EMERGENCY	<b>GUARD 21</b>	ALL DIVISIONS	168.6250		168.6250	110.9	A	AIR GUARD 21	
17									<b>Note: The # behind the</b>	
18									<b>Guard Channel is the</b>	
19									<b>Date of last Clone.</b>	
20										
Prepared By (Communications Unit) David Paschke Kevin Harper COML Phone 831-484-9674					Incident Location 5 MILES SOUTH OF CARMEL, GARRAPATA STATE PARK, MONTEREY CALIFORNIA					

The convention calls for frequency lists to show four digits after the decimal place, followed by either an "N" or a "W", depending on whether the frequency is narrow or wide band. Mode refers to either "A" or "D" indicating analog or digital (e.g. Project 25) or "M" indicating mixed mode. All channels are shown as it programmed in a control station, mobile or portable radio. Repeater and base stations must be programmed with the RX and TX reversed.

Air Guard must be in the last channel of every plan (168.6250, PL 110.9 on TX only) Once 205 is complete, email it to com205@fire.ca.gov or fax to the local ECC and ask them to email it for you.

INCIDENT RADIO COMMUNICATIONS PLAN			Incident Name EAST OPERATIONS (DPH radio Group 13)			Date/Time Prepared 9/30/2016 1900hrs			Operational Period Date/Time 10/1-10/2/2016 0700 - 0700	
Ch #	Function	Channel Name/Trunked Radio System Talkgroup	Assignment	RX Freq N or W	RX Tone/NAC	TX Freq N or W	Tx Tone/NAC	Mode A, D or M	Remarks	
1	COMMAND	C35 Junip. Serra	ALL DIVISIONS	172.5500		164.8625	136.5	A	All Repeaters in East	
2	COMMAND	C33 Chews Rdg.	ALL DIVISIONS	167.1500		172.1375	136.5	A	Operations Linked	
3	COMMAND	C37 SKY RANCH	ALL DIVISIONS	163.0750		172.7500	136.5	A	back to ICP	
4	COMMAND	C-4 MILLER	ALL DIVISIONS	166.6125		168.4000	136.5	A		
5	COMMAND	C8 Black Butte	ALL DIVISIONS	169.5375		164.7125	136.5	A		
6	COMMAND	C-9 PINYON PK	ALL DIVISIONS	170.0125		165.2500	136.5	A		
7	TACTICAL	NIFC T7	J/K/L	168.2500		168.2500		A		
8	TACTICAL	R5 T4	GG	166.5500		166.5500		A		
9	TACTICAL	R5 T6	M/AA	168.2375		168.2375		A		
10	TACTICAL	VFIRE 25	TASSAJARA GRP	154.2875	156.7	154.2875	156.7	A		
11	TACTICAL	CDF T1	SOUTH RG, NORTH RG, ROAD GRP EAST	151.2575	192.8	151.2575	192.8	A	RG=REPAIR GROUP	
12	TACTICAL	VTAC 11	CC	151.1375	156.7	151.1375	156.7	A		
13	A/G CMD	A/G CMD	ALL DIVISIONS	159.4500	192.8	159.4500	192.8	A		
14	A/G TAC	A/G TAC	ALL DIVISIONS	159.2700	192.8	159.2700	192.8	A		
15	MEDICAL	CALCORD	ALL DIVISIONS	156.0750	156.7	156.0750	156.7	A	MEDICAL COORDINATION	
16	EMERGENCY	GUARD 21	ALL DIVISIONS	168.6250		168.6250	110.9	A	AIR GUARD 21	
17									NOTE: The # after the	
18									Guard channel is the	
19									date of last clone.	
20										
Prepared By (Communications Unit) David Paschke Kevin Harper COML Ph 831-484-9674					Incident Location 5 MILES SOUTH OF CARMEL, GARRAPATA STATE PARK, MONTEREY CALIFORNIA					

The convention calls for frequency lists to show four digits after the decimal place, followed by either an "N" or a "W", depending on whether the frequency is narrow or wide band. Mode refers to either "A" or "D" indicating analog or digital (e.g. Project 25) or "M" indicating mixed mode. All channels are shown as it programmed in a control station, mobile or portable radio. Repeater and base stations must be programmed with the Rx and Tx reversed.

Air Guard must be in the last channel of every plan (168.6250, PL 110.9 on TX only) Once 205 is complete, email it to com205@fire.ca.gov or fax to the local ECC and ask them to email it for you.







## Human Resource Message



# ALCOHOL- AND NON-PRESCRIPTION DRUG- FREE INCIDENT



---

A leader is one who knows the way, goes the way,  
and shows the way.

~John C. Maxwell

Your HR Specialists:

At Toro: Janine Summy, (509) 429-1206  
and Cathleen Thompson HRSP(T), (707) 853-4243.  
At Rana: Alan Seago, (707) 315-6537.



# Soberanes Fire Trainee/Trainer Data Form

**Training Specialists:** Robert Rivelle – 707.498.1761  
Dennis Martin - 707.479.8421

- All Incident trainees, including those on Firefighting Modules, at your earliest opportunity complete this form and see the Training Specialist. Bring your taskbook and qualification card. One Training Specialist is covering Rana and Molera Camp and a drop box has been set up for Data Form drop off. These Camps will forward your Trainee Data Form to Toro ICP.
- You will meet with the Training Specialist and receive your training package as you go through DEMOB at Toro ICP, To close your training package, bring to the Training Specialist at Toro ICP your:
  - 1) A performance rating from your trainer. (ICS 225)
  - 2) Your task book that has as many entries as possible by your Trainer.

## Trainee Data

Trainee Name: \_\_\_\_\_ ICS Trainee Position: \_\_\_\_\_

Request Number (O, C, E): \_\_\_\_\_ Agency Designator (Example: CA-ANF): \_\_\_\_\_

Cell # While on Incident: \_\_\_\_\_ Date Assigned: \_\_\_\_\_

---

## Training Records Mailed To: (Fire Chief, Training Officer)

Name: \_\_\_\_\_ Title \_\_\_\_\_

Name of Agency/Unit: \_\_\_\_\_

Agency/Unit Address: \_\_\_\_\_

City: \_\_\_\_\_ State: \_\_\_\_\_ Zip Code: \_\_\_\_\_ Phone: \_\_\_\_\_

---

## Trainee Prerequisites

1. Possesses valid Red Card or agency certification card?  Yes  No

2. Trainee has current position task book issued by home unit?  Yes  No

---

## Trainer/Evaluator Data

Trainer / Evaluator Name: \_\_\_\_\_ ICS position on fire: \_\_\_\_\_

Home Unit: \_\_\_\_\_

City: \_\_\_\_\_ State: \_\_\_\_\_

Cell # While on Incident: \_\_\_\_\_

## What do you need/want to accomplish on this incident:

10/01/2016

TENTATIVE RELEASE

SOBERANES US-CA-BEU-003422

**EQUIPMENT**

E-10684	0700	(ES3)	ENG3 S/T 3660C
E-10804	0700	(ENG3)	ENG3 NOD 3230
E-10524	0800	(ENG6)	ENG6 LKR 84

**OVERHEAD**

O-11137	0700	(PIO2)	BARTON, FREDERICK M
O-11099	0700	(RESL)	CAHAL III, ROBERT
O-11085	0700	(SOF2)	HICKOK, ROB
O-11113	0700	(GSUL)	HOUK, JOHN E
O-10974	0700	(HMGB)	NEVES, RICHARD
O-11187	0700	(FEMP)	ODEBRALSKI, TIM
O-11186	0700	(FEMP)	SCHLEIGER, RYAN
O-11177	0700	(PSCT)	TELLO, GUALBERTO "DAVID"
O-10921	0700	(FEMP)	VALLELUNGA, RYAN
O-11178	0700	(PSCT)	WHITMIRE, MARTIN
O-11176	0730	(PSCT)	SCHULZE, STEVE
O-11152	0730	(FEMP)	WARRICK, JOHN
O-10970	0800	(HECM)	DONNELLY, SHAWN
O-10968	0800	(HECM)	LILLEY, CHRISTOPHER
O-11353	1200	(EQPI)	MORDA, CHRISTOPHER
O-11213	1300	(PIO2)	STAFFORD, KELI
O-11052	1400	(COMT)	ROWE, BRIAN
O-11422	1400	(FEMT)	TOMERLIN, JEFF

10/02/2016

TENTATIVE RELEASE

SOBERANES US-CA-BEU-003422

**CREWS**

C-10242	0700	(HC1)	CRW1 TEXAS CANYON IHC
C-10210	0730	(HC1)	CRW1 ALPINE IHC
C-10245	0730	(HC1)	CRW1 RIO BRAVO IHC
C-10215	0800	(HC2)	CRW2 BIG HORN

**EQUIPMENT**

E-10724	0700	(ENG6)	ENG6 PATROL 11
E-10723	0730	(ENG6)	ENG6 LUR 8160
E-10795	0800	(ENG6)	ENG6 FWF 654
E-10283	0830	(ENG6)	ENG6 NM J3 CONTRACTING #8

**OVERHEAD**

O-11163	0600	(SEC1)	CRAIG, JASON BRETT
O-11260	0600	(THSP)	CROFT, JENNIFER
O-11241	0700	(COMT)	ANDREWS, MATTHEW
O-11200	0700	(PIO2)	BELLAH, RALPH S
O-11059	0700	(SCKN)	BERNHARDT, MATTHEW
O-11170	0700	(SEC2)	BUCK, NATHAN ALEXANDER
O-11233	0700	(FOBS)	CELAYA, DAVID
O-11196	0700	(TFLD)	CORREA, GEORGE
O-10945	0700	(FEMT)	EHRLER, RUSTY
O-11379	0700	(HECM)	HEISEY, ROBERT
O-11165	0700	(SEC1)	HEITZMAN, MARK
O-11192	0700	(TFLD)	HYATT, CHAD
O-11255	0700	(INJR)	LUCIEN, WILLARD KENNY
O-11207	0700	(PIOF)	MAILES, CHRISTOPHER

10/02/2016

TENTATIVE RELEASE

SOBERANES US-CA-BEU-003422

O-11209	0700	(DRIV)	NUNEZ, JONATHAN
O-11378	0700	(HMGB)	PIPPIN, BRIAN
O-11197	0700	(HEQB)	RUST, JAMES
O-11127	0700	(IMET)	RUTHFORD, JULIA ELIZABETH
O-10655	0700	(HRSP)	SEAGO, ALAN
O-11161	0700	(SEC1)	STEPHENS, JERAMY J
O-11194	0700	(DIVS)	SWEENEY, RALPH
O-10887	0700	(HMGB)	UVODICH, SARAH JEAN
O-10926	0800	(DMOB)	CURLEY, ARTHUR
O-11168	1000	(SEC2)	KERNS, MELVIN OWEN





Revised on  
09/04/2016

W 68 TO  
MONTEREY &  
MOLERA

E 68 TO SALINAS

HWY 68

TO W 68  
TO E 68

HEAVY EQUIPMENT  
PARKING GROUND  
SUPPORT IA  
STAGING  
(Fuel, Transportation,  
Weed Wash)

VENDOR  
CAMPING

MONTEREY  
SALINAS HWY

PORTOLA DR.

PIO

PIO

LAUNDRY  
0600-2200

SECURITY

FOOT  
PATH

CCC  
CAMP

PARKING

PARKING

ICP  
DETAIL SEE NEXT PAGE

1 2 3

ORDERING

SUPPLY  
0600-2200

Additional  
Day Sleeping  
Request Contact  
Facilities

ICP

OVERHEAD  
PARKING

BRIEFING

LUNCH

KITCHEN  
0530-0930  
1730-2130

4

MEDICAL

SHOWERS  
0500-1200  
1400-2300

**TORO CAMP**

NOT TO SCALE



PARKING

OVERHEAD SLEEPING

CREW/BUS  
ENGINE PARKING

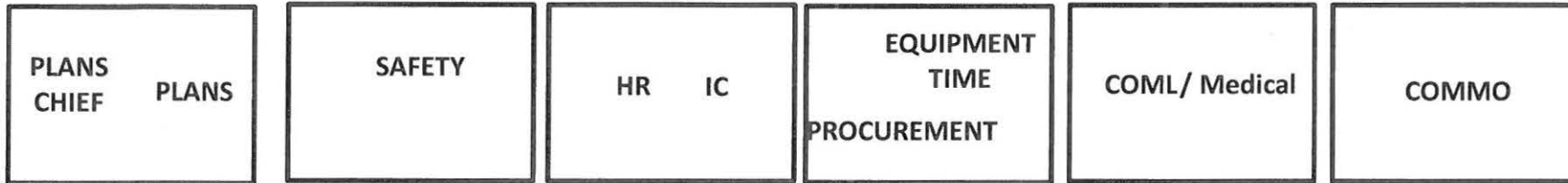
CREW  
PARKING

CREW SLEEPING

1 - READS/ARCHY /FIRE  
SUPPR./REPAIR  
2 - USFS  
3 - FOOD UNIT LEADER  
4 - MED L

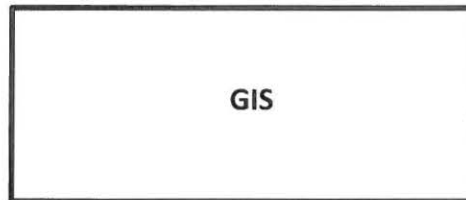
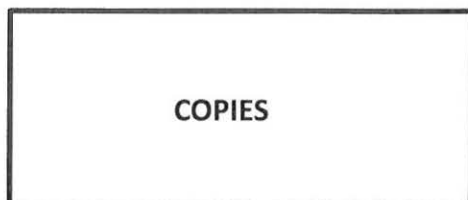
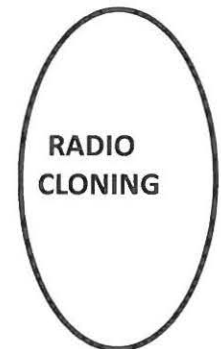
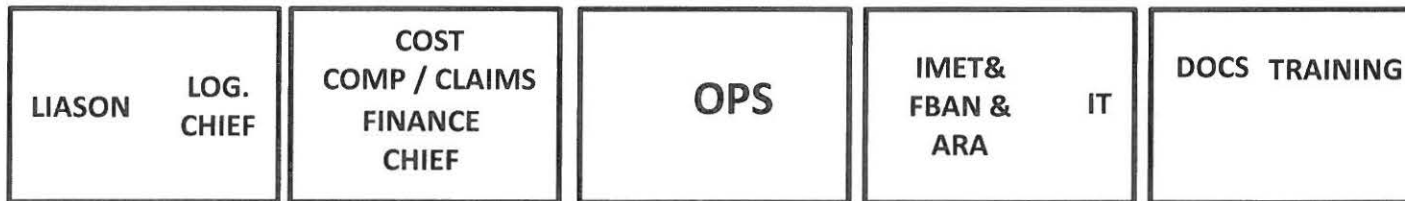
TO HELISPOT

# TORO PARK ICP MAP

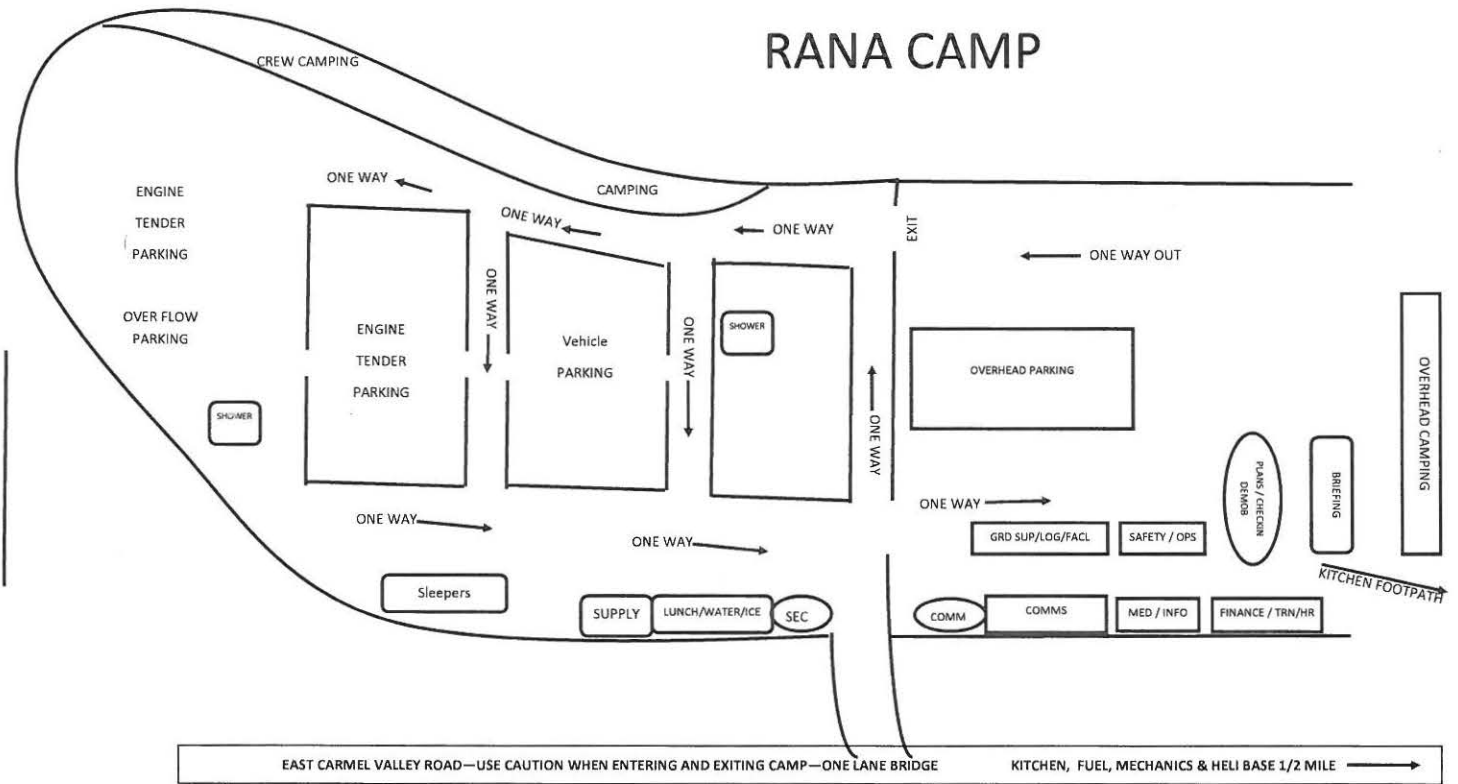


## MAIN STREET

NOT TO SCALE



# RANA CAMP



EAST CARMEL VALLEY ROAD—USE CAUTION WHEN ENTERING AND EXITING CAMP—ONE LANE BRIDGE

KITCHEN, FUEL, MECHANICS & HELI BASE 1/2 MILE





