

INCIDENT ACTION PLAN

SOBERANES

CA-BEU-003422 PNKG7Z (1502)



OPERATIONAL PERIOD

TUESDAY, OCTOBER 4, 2016

0700-1900 HOURS

Maps

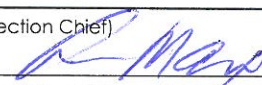
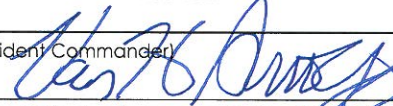


Fire weather



RAWS



INCIDENT OBJECTIVES	1. Incident Name Soberanes	2. Date 10/3/2016	3. Time 2200
4. Operational Period TUESDAY October 04, 2016 0700 - 1900 Hours			
5. General Control Objectives for the Incident (include alternatives) Management Objectives <ul style="list-style-type: none"> • Provide for the safety of all responders and the public by utilizing national Risk Management Standards and the implementation of appropriate mitigations. • Reduce firefighter exposure by only engaging fire assignments with the highest probability of success. • Engage cooperators and stakeholders to jointly provide for the defense of communities, infrastructure and economic interests. • Utilize local resource specialists to identify and protect sensitive sites and cultural resource values by minimizing impacts from suppression operations. • Maintain and enhance community, County, State, National Forest and stakeholder relationships through accurate and timely dissemination of information. • Assess and implement suppression repair needs, where appropriate in coordination with the Resource Advisor following agency policy. • Manage incident costs effectively for the values at risk through regular and ongoing cost analysis. Control Objectives <p>Keep the fire;</p> <ul style="list-style-type: none"> • East of Coast Ridge Road. • North of Nacimiento-Fergusson Road. • West of Carmel Valley and Reliz Canyon. • South of Carmel Valley Road. 			
6. Weather Forecast for Operational Period <ul style="list-style-type: none"> • SEE WEATHER FORECAST 			
7. General Safety Message <ul style="list-style-type: none"> • SEE SAFETY MESSAGE 			
8. Attachments (mark if attached)			
<input checked="" type="checkbox"/> Organizational List ICS 203	<input checked="" type="checkbox"/> Air Operations Summary ICS 220	<input checked="" type="checkbox"/> Communications Plan ICS 205	
<input checked="" type="checkbox"/> Weather Forecast	<input checked="" type="checkbox"/> Safety Message	<input checked="" type="checkbox"/> Maps and Messages	
<input checked="" type="checkbox"/> Divisional Assignment Lists ICS 204	<input checked="" type="checkbox"/> Medical Plan ICS 206	<input checked="" type="checkbox"/> Unit Log ICS 214	
9. Prepared by (Planning Section Chief) <u>Ann Marx</u> 	10. Approved by (Incident Commander) <u>Van Arroyo</u> 		

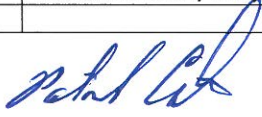
ORGANIZATION ASSIGNMENT LIST	
1. Incident Name	
Soberanes Fire	
2. Date 10/03/2016	3. Time 2200
4. Operational Period	
TUESDAY, October 04, 2016 0700 – 1900 HRS	
5. Incident Commander and Staff	
Position	Name
Incident Commander	Van Arroyo
Deputy	Mike Sandwick / Dana D'Andrea
Safety Officer	Rick Bertram / Tom Zeulner
Information Officer	Helen Tarbet / Manny Madrigal
Human Resources	Janine Summy / Cathleen Thompson (T)
Liaison Officer	Randy Graham / Warner McGrew / Jeff Jones
6. Agency Representative	
Agency	Name
USFS Agency Admin	Bob Baird
CAL FIRE Agency Admin	Brennan Blue
USFS Agency Admin Rep	Tim Short
CAL OES	Gary Humphrey / Corey Zander
Monterey County OES	Dick Bower
Monterey PRPD	Caine Carmarillo / Joseph Narvaez
California Highway Patrol	Rob Kaczor
California State Parks	Sean James
Big Sur Fire Brigade	Martha Karstens / Frank Pinney
CA Conservation Corp	Ben Herbert / Fresno CCC
SACC	Tony Collins
7. Planning Section	
Position	Name
Chief	Ann Marx / Robert Kovach (Rana) / Dan Michael (T)
Resources Unit	Pat Caprioli / Justin Wilson / Mike Finnerty Bobby Cahal/ (Rana) Wayne Barney & Nancy Masters
Situation Unit	Mike Held / Paul Kaiser / Allison Hitchcock (Rana) Brian Wilson (T) / Dena Paschke(T)
Documentation	Rex Crabtree
Demobilization	Marian Kadota
Fire Behavior Analyst	Scott Cones / Josh Eichamer (T)
Long Term Analyst	Cary Newman
Training Specialist	Brad Smith / Dennis Martin (T) (Rana)
GIS Specialist	Nick Mouthann
Technology Support	Charlene Jumper / Heather Wiskow Sherry Degroot (T) / Cheryl DeShazer (T)
IMET	Jason Clapp / Shawn Weagle (Rana)
Air Resource Advisor	Jennifer Croft / Sean Luchs (T)
Resource Advisor	Cedar Drake / James Heintz
8. Logistics Section	
Position	Name
Chief	Tom Crakes / Bob Feldtz Scott Gardner (T) (Molera) / Mike Beeman (T) (Rana)
Supply Unit	John Harkelroad
Facilities Unit	Mike Farmer / Jim Eckroth
Ground Support	Fred Simonds / John Badaracco
Communications	David Paschke / Kevin Harper
Food Unit	Kerry Kellogg / Laura Roundine (Rana) / Scott Hague (T)
Medical	Devon Haggie / Andy Demetropolis (T)
Security	Chuck Jones
9. Operations Section	

Operations Section Chief	John Abell Troy Nelsen (T) / Shaun Craig (T)
Planning Ops. Section Chief	Bob Neumann / Jon Lucas (T)

DIVISIONS / GROUPS		
Division	J / K / L	Chris Linane
Division	M / AA	Bill King / Steve Miranda (T)
Division	CC	Micheal Sweany
Division	GG	Michael Sweany
Group	Tassajara SDG	Dan Freeh / Josh Thomas (T) Greg Fashano (T)
Group	North Repair	Brent Kaiser / Greg Cox (T)
Group	South Repair	Zane Brown
Group	Road Group East	Chris Linane
Group	West Repair	Tim Whorton / William Marks (T)

DIVISIONS / GROUPS		

Air Operations Branch	
Air Ops Branch Director	John Crotty / Brian Sexton (T)
Air Support Supervisor	Al Driesbach / Curt Warner
Air Attack Supervisor	Val Linch / Mark Nunez
Helicopter Coordinator	Dave Phillips

10. Finance Section	
Position	Name
Chief	Robin Nimura / Amy Lee (T) Ann Marie Carlson (T)
Time Unit	Gloria McCabe / Dione Perkins (T)
Cost	Tammy Monahan
Procurement Unit	
Compensation Unit / Claims	Michelle Beltcher / Tracy Nicholson
Prepared by Pat Caprioli RESL 	



Soberanes Fire Weather Forecast



Forecast Information & SPOT Forecasts

FORECAST NO: 73

NAME OF FIRE: Soberanes

PREDICTION FOR: 0700 Tue - 0700 Wed
SHIFT DATE: Tuesday Oct 4, 2016

UNIT: CA-BEU/LPF MRD
SIGNED: Jason Clapp

TIME AND DATE
FORECAST ISSUED: 1900 10/3/16

Incident Meteorologists
Shawn Weagle (Rana Camp) – 503-956-7504
Jason Clapp (Toro ICP) – 530-383-4839

Weather Discussion: Morning clouds left behind by yesterday's front will likely break up by late morning, but still yield a partly cloudy sky over fire with slightly warmer temperatures. Moderate N to NW general winds will mainly affect coastal and ridgetop areas through Wednesday with terrain-driven winds expected to prevail elsewhere. Today will be the beginning of a warming and drying trend that will push temperatures above normal by Thursday.

WEATHER FORECAST for Today:

	Ridgetops / Upper Slope	Valleys / Lower Slopes
Weather	Mostly cloudy AM, then partly cloudy	Mostly cloudy AM, then partly cloudy
Highs	58 - 66	70 - 76
Min RHs	30 - 40%	25 to 30%
20 ft Winds	NE 5-10 mph early, becoming N-NW 13-16 mph with gusts to 25 mph in the afternoon.	Upslope winds 3-5 mph becoming up-valley 5-8 mph with afternoon gusts 10-15 mph. E-NE winds 10-15 mph lower elevations in Arroyo Seco and Willow Creek. NW winds 10-13 mph in NW-SE drainages (Miller Canyon, Pine Valley & Tassajara) increasing to 25 mph in afternoon.

Marine Layer: No well-defined marine layer, but morning low clouds in morning. **Haines:** 3


WEATHER FORECAST for Tonight: Mainly clear; becoming much drier on ridgetops. RH lowering to 30-35% above thermal belts... otherwise, Max RH 65-85%. Lows mainly in the 40s. North winds 6-10 mph with gusts 20 mph, becoming NE 10-15 mph with gusts to 25 mph ridges and coastal gaps. Otherwise, winds diminishing overnight.

OUTLOOK for Wednesday:

Weather	Sunny and drier as ridge builds into area	
Highs/Lows	65-69 ridges...75-79 valleys	36-39 ridges...44-48 valleys
Min/Max %	Min...25 to 30%.	Max...70-80%
20 ft Winds	Winds NE 10-15 mph with gusts 20-25 mph ridges and coastal gaps, becoming N 5-10 mph with gusts 15-20 mph in the afternoon. Otherwise, expect increasing upslope/upcanyon winds 4-8 mph with gusts to 15 mph.	

EXTENDED FORECAST for Thursday through Sunday: Warming and drying trend continues through the upcoming weekend with inland valley temperatures likely reaching into the upper 80s to lower 90s. RH will likely get back into the 10-18% range for inland valleys, with poor humidity recovery above thermal belts due to a strengthening subsidence inversion. Much cooler temperatures and higher RH expected for the immediate coast under a 1000-1500' marine layer. Light to moderate NE general winds during the night and morning hours, tending up-slope or West each afternoon.

FIRE BEHAVIOR FORECAST

FORECAST NUMBER: 72	TYPE OF FIRE Wildfire
FIRE NAME: Soberanes Fire	OPERATIONAL PERIOD 10-4-2016 24 HOUR SHIFT
DATE ISSUED 10-3-2016	TIME ISSUED 1700 HOURS
UNIT CA-BEU-003422	SIGNED Josh Eichamer FBAN (t) 

INPUTS

*****Review Weather Forecast for details*****

Gusty northerly winds expected throughout the day. Predicted RH values between 25% and 40%.

FIRE BEHAVIOR

GENERAL

The probability of active fire spread today is minimal. Increasing temps and decreasing RH values will begin to bring back favorable burning conditions later in the week. Live fuel moistures remain extremely low due to drought conditions and will take time to fully recover.

Optimal Alignment - Peak Burning Conditions

POI = 40 – 50 Spotting Distance= up to 1/4. ROS 5 - 10 ch/h Fine Dead Fuel Moisture = 6 %

LOCAL THRESHOLDS – WATCH OUTS

Coastal Sage Scrub fuel, primarily chamise and button brush, have seasonally low live fuel moisture for this time of year. Fire continues to burn in areas burned by both the 1999 Kirk and 2008 Basin Fires, and further south in fuels burned only once by the 2008 Basin fire. Snags, skeleton brush and heavy downed fuel are abundant

Combinations of any of these threshold factors can greatly increase fire behavior:

Thresholds:	20' wind Over 7mph	RH Less Than 17%	Temperatures Over 98°	10hr fuel Less than 6%
--------------------	-----------------------	---------------------	--------------------------	---------------------------

SPECIFIC

- Some creeping and smoldering in the duff and leaf litter along unlined portions of the fire. Heavy fuels will retain heat and may be problematic where close to the fires edge.
- Specific areas of concern include Miller, Pine, and Tassajara canyons due to lack of containment. Expect continued smoke production from the Ventanta Cone area.

AIR OPERATIONS

Expect morning clouds diminishing by mid-morning. Some cumulus expected throughout the day.
Gusty afternoon winds expected.

SAFETY

Luck can be defined as success or failure apparently brought by chance rather than through one's own actions.

Division/Group Assignment List (ICS 204 WF)

1. Incident Name:			3.			
SOBERANES			Branch:		Division/Group:	
2. Operational Period: DAY			J / K / L			
Date/Time From: 10/04/2016 0700 TUE		Date/Time To: 10/04/2016 1900 TUE				
4. Operations Personnel						
OPERATIONS CHIEF		JOHN ABELL (10/12) SHAUN CRAIG (10/12) ; TROY NELSEN		DIVISION/GROUP SUPERVISOR		CHRIS LINANE (10/11)
AIR ATTACK SUPERVISOR		VAL LINCH (10/12) MARK NUNEZ 10/12)				
5. Resources Assigned this Period						
Strike Team / Task Force / Resource Designator		LWD	Leader	Number Persons	Drop Off PT./Time	Pick Up PT./Time
CRW2IA BOISE CREW 3 C-10219		10/04	ED HUNT	18	RANA/0700	RANA/1900
ENG3 LPF44 E-10829		10/15	NIGEL ALLEN	5	RANA/0700	RANA/1900
ENG3 LPF 18 E-10821.2		10/10	BEAU RICHWINE	5	RANA/0700	RANA/1900
REMS # 2 O-11386		10/06	LARRY R FREITAS	2	RANA/0700	RANA/1900
FEMP O-11366		10/06	GARY JOHNSON	1	RANA/0700	RANA/1900
EMTF O-11654			MICHAEL BRAMLETT	1	RANA/0700	RANA/1900
FEMP O-11370		10/06	NICHOLAS STEPANIAN	1	RANA/0700	RANA/1900
SOFR O-11529		10/15	LINDA FERGUSON	1	RANA/0700	RANA/1900
SOFR (T) O-11681		10/17	JOSHUA WHEELER	1	RANA/0700	RANA/1900
6. Control Operations/Work Assignments:						
<ul style="list-style-type: none"> • Mop-up to the degree necessary to make the possibility of escape very low while ensuring a safe working environment. • Backhaul equipment, trash and hose at the direction of the Division. • Division to work with READS and Repair Group in identifying and assisting where possible with Fire Suppression repair. 						
7. Special Instructions:						
<ul style="list-style-type: none"> • REMS #2 (w FEMP's Smith and Giacomini) available from DP 42 for all division/group's in East Zone. • Division Group Supervisors must validate cost apportionment on 204's at the end of each shift. Contact Finance Section Chief for questions. • Division/Group Supervisors to record location and condition of all UTV's, pumps, and excess equipment, and report to Logistics via Planning Ops. • All resources utilizing water in excess of 100 gal must document water usage on the enclosed Water Usage Log. Submit with your time. • If you open a gate close the gate!!! • SOFR Linda Ferguson and Joshua Wheeler are assigned to Divisions J/K/L and Road Group East • Rana Safety Officer (SOF2) Kenneth Rogers (208) 940-2921 / Rana Safety Trailer (831) 659-0460. 						
8. Division/Group Communication Summary						
Function	Channel	RX Frequency N/W	RX Tone/NAC	TX Frequency N/W	TX Tone/NAC	Mode
TACTICAL NIFC T7	7	168.2500N		168.2500N		A
MEDICAL CALCORD	15	156.0750N	156.7	156.0750N	156.7	A
AIR TO GROUND TAC	14	159.2700N	192.8	159.2700N	192.8	A
EMERGENCY GUARD	16	168.6250N		168.625N	110.9	A
9. Prepared By (Resource Unit Leader)			Approved By (Planning Section Chief)		Date	Time
MIKE FINNERTY			ANN MARX		10/03/2016	1640

Division/Group Assignment List (ICS 204 WF)

1. Incident Name:			3.			
SOBERANES			Branch:		Division/Group:	
2. Operational Period: DAY					M / AA	
Date/Time From: 10/04/2016 0700 TUE			Date/Time To: 10/04/2016 1900 TUE			
4. Operations Personnel						
OPERATIONS CHIEF		JOHN ABELL (10/12) SHAUN CRAIG (10/12) ; TROY NELSEN		DIVISION/GROUP SUPERVISOR		BILL KING (10/5) STEVEN MIRANDA (10/5) (T)
AIR ATTACK SUPERVISOR		VAL LINCH (10/12) MARK NUNEZ (10/12)				
5. Resources Assigned this Period						
Strike Team / Task Force / Resource Designator		LWD	Leader	Number Persons	Drop Off PT./Time	Pick Up PT./Time
CRW1 PIKE IHC C-10229		10/06	JOHN ALLBRIGHT	22	RANA/0700	RANA/1900
CRW1 LOS PADRES IHC C-10246		10/15	THOMAS WOODS	21	RANA/0700	RANA/1900
ENG3 LPF 31 E-10830		10/14	JERROD LEE KRENKEL	5	RANA/0700	RANA/1900
FEMP O-11368		10/06	THOMAS WATSON	1	RANA/0700	RANA/1900
FEMP O-11627		10/17	JUSTIN VERGA	1	RANA/0700	RANA/1900
FEMT O-11374		10/06	DREW KOSTAL	1	RANA/0700	RANA/1900
FEMT O-11628		10/17	DARREN STRECKER	1	RANA/0700	RANA/1900
REMS # 2 O-11386		10/06	LARRY R FREITAS	2	RANA/0700	RANA/1900
6. Control Operations/Work Assignments:						
<ul style="list-style-type: none"> • Mop-up to the degree necessary to make the possibility of escape very low while ensuring a safe working environment. • Backhaul equipment, trash and hose at the direction of the Division. • Division to work with READS and Repair Group in identifying and assisting where possible with Fire Suppression repair. 						
7. Special Instructions:						
<ul style="list-style-type: none"> • REMS #2 (w/ FEMP's Smith and Giacomini) available from DP 42 for all division/group's in East Zone. • Division Group Supervisors must validate cost apportionment on 204's at the end of each shift. Contact Finance Section Chief for questions. • Division/Group Supervisors to record location and condition of all UTV's, pumps, and excess equipment, and report to Logistics via Planning Ops. • All resources utilizing water in excess of 100 gal must document water usage on the enclosed Water Usage Log. Submit with your time. • If you open a gate close the gate!!! • Rana Safety Officer (SOF2) Kenneth Rogers (208) 940-2921 / Rana Safety Trailer (831) 659-0460. 						
8. Division/Group Communication Summary						
Function	Channel	RX Frequency N/W	RX Tone/NAC	TX Frequency N/W	TX Tone/NAC	Mode
TACTICAL R5 T6	9	168.2375N		168.2375N		A
MEDICAL CALCORD	15	156.0750N	156.7	156.0750N	156.7	A
AIR TO GROUND TAC	14	159.2700N	192.8	159.2700N	192.8	A
EMERGENCY GUARD	16	168.6250N		168.625N	110.9	A
9. Prepared By (Resource Unit Leader)			Approved By (Planning Section Chief)		Date	Time
MIKE FINNERTY			ANN MARX		10/03/2016	2200

Division/Group Assignment List (ICS 204 WF)

1. Incident Name:			3.			
SOBERANES			Branch:		Division/Group: CC	
2. Operational Period: DAY						
Date/Time From: 10/04/2016 0700 TUE		Date/Time To: 10/04/2016 1900 TUE				
4. Operations Personnel						
OPERATIONS CHIEF		JOHN ABELL (10/12) SHAUN CRAIG (10/12) TROY NELSEN		DIVISION/GROUP SUPERVISOR		MICHAEL SWEANY (10/12)
AIR ATTACK SUPERVISOR		VAL LINCH (10/12) MARK NUNEZ (10/12)				
5. Resources Assigned this Period						
Strike Team / Task Force / Resource Designator		LWD	Leader	Number Persons	Drop Off PT./Time	Pick Up PT./Time
ENG3 LNF 81 E-10805		10/08	MATTHEW PRENTISS	5	RANA/0700	RANA/1900
WTS2 KRITZ E-10131		10/05	BRANDON VIEIRA	1	RANA/0700	RANA/1900
REMS # 2 O-11386		10/06	LARRY R FREITAS	2	RANA/0700	RANA/1900
FEMP O-11372		10/06	TODD LESIEUR	1	RANA/0700	RANA/1900
FEMP O-11673		10/17	FRANK CULHNO	1	RANA/0700	RANA/1900
SOF 2 O-11530		10/13	MARK HELM	1	RANA/0700	RANA/1900
6. Control Operations/Work Assignments:						
<ul style="list-style-type: none"> Mop-up to the degree necessary to make the probability of escape very low while ensuring a safe work environment. Back haul equipment, trash and hose at the direction of the division. Division to work with READs and repair group in identifying and assisting where possible with fire suppression repair. 						
7. Special Instructions:						
<ul style="list-style-type: none"> REMS #2 (w/ FEMP's Smith and Giacomini) available from DP 42 for all division/group's in East Zone. Division/Group Supervisors must validate cost apportionment on 204's at the end of each shift. Contact Finance Section Chief for questions. Division/Group Supervisors to record location and condition of all UTV's, pumps, and excess equipment, and report to Logistics via Planning Ops. All resources utilizing water in excess of 100 gal must document water usage on the enclosed Water Usage Log. Submit with your time. If you open a gate close the gate!!! Rana Safety Officer (SOF2) Kenneth Rogers (208) 940-2921 / Rana Safety Trailer (831) 659-0460. 						
8. Division/Group Communication Summary						
Function	Channel	RX Frequency N/W	RX Tone/NAC	TX Frequency N/W	TX Tone/NAC	Mode
TACTICAL VTAC 11	12	151.1375N	156.7	151.1375N	156.7	A
MEDICAL-CALCORD	15	156.0750N	156.7	156.0750N	156.7	A
AIR TO GROUND TAC	14	159.2700N	192.8	159.2700N	192.8	A
EMERGENCY-GUARD	16	168.6250N		168.625N	110.9	A
9. Prepared By (Resource Unit Leader)			Approved By (Planning Section Chief)		Date	Time
BOBBY CAHAL			ANN MARX		10/03/2016	1640

Division/Group Assignment List (ICS 204 WF)

1. Incident Name:			3.			
SOBERANES			Branch:		Division/Group: GG	
2. Operational Period: DAY						
Date/Time From: 10/04/2016 0700 TUE		Date/Time To: 10/04/2016 1900 TUE				
4. Operations Personnel						
OPERATIONS CHIEF		JOHN ABELL (10/12) SHAUN CRAIG (10/12) ; TROY NELSEN		DIVISION/GROUP SUPERVISOR		MIKE SWEANY (10/11)
AIR ATTACK SUPERVISOR		VAL LINCH (10/12) MARK NUNEZ (10/12)				
5. Resources Assigned this Period						
Strike Team / Task Force / Resource Designator		LWD	Leader	Number Persons	Drop Off PT./Time	Pick Up PT./Time
ENG3 ENF 333 E-10806		10/08	RYAN WAGGONER	7	RANA/0700	RANA/1900
ENG3 PNF 323 E-10807		10/08	CLAYTON BECK	5	RANA/0700	RANA/1900
ENG6 FIRESTORM 9903 E-10800		10/08	TACOMA MANUEL	3	RANA/0700	RANA/1900
REMS # 2 O-11386		10/06	LARRY R FREITAS	2	RANA/0700	RANA/1900
FEMP O-10930		10/05	DUSTIN KUNTZ	1	RANA/0700	RANA/1900
FEMP O-11575		10/15	TOM KAVANAUGH	1	RANA/0700	RANA/1900
FEMT O-11675		10/17	RAICE WICKLAS	1	RANA/0700	RANA/1900
6. Control Operations/Work Assignments:						
<ul style="list-style-type: none"> • Mop-up to the degree necessary to make the probability of escape very low while ensuring a safe work environment. • Back haul equipment, trash and hose at the direction of the division. • Division to work with READs and repair group in identifying and assisting where possible with fire suppression repair. • SOFR Mark Helm in Divisions CC & GG. 						
7. Special Instructions:						
<ul style="list-style-type: none"> • Avoid ground disturbance in areas marked with Seibert Stakes. • REMS #2 (w/ FEMP's Smith and Giacomini) available from DP 42 for all division/group's in East Zone. • Division/Group Supervisors must validate cost apportionment on 204's at end of shift. Contact the Finance Section Chief for questions. • Division/Group Supervisors to record location and condition of all UTV's, pumps, and excess equipment, and report to Logistics via Planning Ops. • All resources utilizing water in excess of 100 gal must document water usage on the enclosed Water Usage Log. Submit with your time. • If you open a gate close the gate!!! • Rana Safety Officer (SOF2) Kenneth Rogers (208) 940-2921 / Rana Safety Trailer (831) 659-0460. 						
8. Division/Group Communication Summary						
Function	Channel	RX Frequency N/W	RX Tone/NAC	TX Frequency N/W	TX Tone/NAC	Mode
TACTICAL R5 T4	8	166.5500N		166.5500N		A
MEDICAL - CALCORD	15	156.0750N	156.7	156.0750N	156.7	A
AIR TO GROUND TAC	14	159.2700N	192.8	159.2700N	192.8	A
EMERGENCY	16	168.6250N		168.625N	110.9	A
9. Prepared By (Resource Unit Leader)			Approved By (Planning Section Chief)		Date	Time
BOBBY CAHAL			ANN MARX		10/03/2016	1640

Division/Group Assignment List (ICS 204 WF)

1. Incident Name:			3.			
SOBERANES			Branch:		Division/Group:	
2. Operational Period:			TASSAJARA SDG			
DAY						
Date/Time From: 10/04/2016 0700 TUE		Date/Time To: 10/04/2016 1900 TUE				
4. Operations Personnel						
OPERATIONS CHIEF		JOHN ABELL (10/12) SHAUN CRAIG (10/12) ; TROY NELSEN		DIVISION/GROUP SUPERVISOR		D. FREEH(10/11) G. FASHANO(T) 10/14) J.THOMAS (T) (10/4),
AIR ATTACK SUPERVISOR		VAL LINCH (10/12) MARK NUNEZ (10/12)				
5. Resources Assigned this Period						
Strike Team / Task Force / Resource Designator		LWD	Leader	Number Persons	Drop Off PT./Time	Pick Up PT./Time
CRW1 HORSESHOE IHC C-10249		10/11	JOSE GONZALES	21	RANA/0700	RANA/1900
CRW1 SIERRA IHC C-10247		10/11	ALAN P ROBY	20	RANA/0700	RANA/1900
CRW1 SPRINGVILLE IHC C-10248		10/10	JOAQUIN MEDINA	19	RANA/0700	RANA/1900
ENG3 LPF 352 E-10821.5		10/10	MICHAEL SHIFFRAR	5	RANA/0700	RANA/1900
ENG3 LPF 371 E-10821.6		10/10	RICKY AISPURO	5	RANA/0700	RANA/1900
ENG3 LPF 37 E-10821.3		10/10	LOUIS J DELAROSA	5	RANA/0700	RANA/1900
ENG6 3648 E-10827		10/15	CRAIG OWEN	3	RANA/0700	RANA/1900
FRONT END LOADER E-10781		10/06	JOHN RICKER	1	RANA/0700	RANA/1900
WTT2 SEQUOIA WT2 E-10820		10/14	JAIMEE AYALA	2	RANA/0700	RANA/1900
STEN E-10821.1		10/10	ROB THIBAUT	1	RANA/0700	RANA/1900
FFT2 O-11425		10/06	TAYLOR SIEMANN	1	RANA/0700	RANA/1900
FEMP O-11536		10/14	RANDY SHAFER	1	RANA/0700	RANA/1900
FEMT O-11577		10/14	JOE SCARROTT	1	RANA/0700	RANA/1900
CRW1 BEAR DIVIDE C-10227		10/04	BRIAN ANDERSON	20	ENGLISH CABIN/0700	TORO/1300
CRW1 BRECKENRIDGE IHC C-10230		10/06	JAMES ROBERTSON	20	ENGLISH CABIN/0700	ENGLISH CABIN/1900
CRW1 MAD RIVER IHC C-10238		10/06	CHARLES HAIR	21	ENGLISH CABIN/0700	ENGLISH CABIN/1900
FEMP O-11371		10/06	SEAN CAVAVAUGH	1	ENGLISH CABIN/0700	ENGLISH CABIN/1900
FEMP O-11602		10/16	CHRIS SCHUETZ	1	ENGLISH CABIN/0700	ENGLISH CABIN/1900
FEMP O-11672		10/17	SCOTT T DRAGOUN	1	ENGLISH CABIN/0700	ENGLISH CABIN/1900
8. Division/Group Communication Summary						
Function	Channel	RX Frequency N/W	RX Tone/NAC	TX Frequency N/W	TX Tone/NAC	Mode
TACTICAL VFIRE 25	10	154.2875N	156.7	154.2875N	156.7	A
MEDICAL CALCORD	15	156.0750N	156.7	156.0750N	156.7	A
AIR TO GROUND TAC	14	159.2700N	192.8	159.2700N	192.8	A
EMERGENCY GUARD	16	168.6250N		168.625N	110.9	A
9. Prepared By (Resource Unit Leader)			Approved By (Planning Section Chief)		Date	Time
MIKE FINNERTY			ANN MARX		10/03/2016	2200

Division/Group Assignment List (ICS 204 WF)

1. Incident Name:			3.			
SOBERANES			Branch:		Division/Group: TASSAJARA SDG	
2. Operational Period: DAY						
Date/Time From: 10/04/2016 0700 TUE		Date/Time To: 10/04/2016 1900 TUE				
4. Operations Personnel						
OPERATIONS CHIEF		JOHN ABELL (10/12) SHAUN CRAIG (10/12) ; TROY NELSEN		DIVISION/GROUP SUPERVISOR		
				D. FREEH(10/11) G. FASHANO(T) 10/14) J.THOMAS (T) (10/4),		
AIR ATTACK SUPERVISOR		VAL LINCH (10/12) MARK NUNEZ (10/12)				
5. Resources Assigned this Period						
Strike Team / Task Force / Resource Designator		LWD	Leader	Number Persons	Drop Off PT./Time	Pick Up PT./Time
FEMT O-11605		10/16	RUBEN GARCIA	1	ENGLISH CABIN/0700	ENGLISH CABIN/1900
FEMT O-11674		10/17	KORIE WALKLEY	1	ENGLISH CABIN/0700	ENGLISH CABIN/1900
SOF2 O-11394		10/08	LARRY WADE	1	RANA/0700	RANA/1900
SOF2 (T) O-11656		10/16	JOE LABAK	1	RANA/0700	RANA/1900
6. Control Operations/Work Assignments:						
<ul style="list-style-type: none"> • Continue direct line tactics along fires edge where safe. • Be prepared to implement structure defense plan as appropriate. 						
7. Special Instructions:						
<ul style="list-style-type: none"> • REMS #2 (w/ FEMP's Smith and Giacomini) available from DP 42 for all division/group's in East Zone. • Division Group Supervisors must validate cost apportionment on 204's at the end of each shift. Contact Finance Section Chief for questions. • Division/Group Supervisors to record location and condition of all UTV's, pumps, and excess equipment, and report to Logistics via Planning Ops. • All resources utilizing water in excess of 100 gal must document water usage on the enclosed Water Usage Log. Submit with your time. • If you open a gate close the gate!!! • Rana Safety Officer (SOF2) Kenneth Rogers (208) 940-2921 / Rana Safety Trailer (831) 659-0460. 						
8. Division/Group Communication Summary						
Function	Channel	RX Frequency N/W	RX Tone/NAC	TX Frequency N/W	TX Tone/NAC	Mode
TACTICAL VFIRE 25	10	154.2875N	156.7	154.2875N	156.7	A
MEDICAL CALCORD	15	156.0750N	156.7	156.0750N	156.7	A
AIR TO GROUND TAC	14	159.2700N	192.8	159.2700N	192.8	A
EMERGENCY GUARD	16	168.6250N		168.625N	110.9	A
9. Prepared By (Resource Unit Leader)			Approved By (Planning Section Chief)		Date	Time
MIKE FINNERTY			ANN MARX		10/03/2016	2200

Division/Group Assignment List (ICS 204 WF)

1. Incident Name:			3.			
SOBERANES			Branch:		Division/Group:	
2. Operational Period:			NORTH REPAIR GROUP			
DAY						
Date/Time From: 10/04/2016 0700 TUE		Date/Time To: 10/04/2016 1900 TUE				
4. Operations Personnel						
OPERATIONS CHIEF		JOHN ABELL (10/12) SHAUN CRAIG (10/12) ; TROY NELSEN		DIVISION/GROUP SUPERVISOR		B. KAISER (10/8) G. COX (10/8) (T) J. SIMMONS (10/15) (T)
AIR ATTACK SUPERVISOR		VAL LINCH (10/12) MARK NUNEZ (10/12)				
5. Resources Assigned this Period						
Strike Team / Task Force / Resource Designator		LWD	Leader	Number Persons	Drop Off PT./Time	Pick Up PT./Time
CRW2IA GE FORESTRY 8B C-10221		10/04	ESTEBAN GONZALEZ	20	RANA/0700	RANA/1900
CRW2IA BLACK EAGLES - 3 C-10251		10/06	ROBERT G SOLLAMI	21	RANA/0700	RANA/1900
ENG6 NM J3 CONTRACTING #8 E-10283		10/12	REID BARNEY	3	RANA/0700	RANA/1900
DOZ2 BENNETT E-10777		10/06	SAM BENNETT	2	RANA/0700	RANA/1900
DOZ2 DENIS DOZER E-10775		10/06	MATT BORLAND	2	RANA/0700	RANA/1900
DOZ2 CAROTHERS DOZER E-10776		10/06	JOEL CAROTHERS	2	RANA/0700	RANA/1900
EXCA2 WALBERG E-10669		10/13	KYLE PEREIRA	1	RANA/0700	RANA/1900
EXCA2 WALBERG 315 E-10671		10/15	BOB BOLAYOG	1	RANA/0700	RANA/1900
EXCA2 VARIAN U1360 E-10676		10/16	GREG VARIAN	1	RANA/0700	RANA/1900
SKG2 LET ER BUCK E-10054		10/12	STEVE LASSEN JR	1	RANA/0700	RANA/1900
CHIP1 CECIL E-10817		10/11	DENNIS PALMER	2	RANA/0700	RANA/1900
WTS2 SIERRA WATER 544 E-10610		10/10	PAUL BRANDOW	1	RANA/0700	RANA/1900
REMS 2 O-11386		10/06	LARRY R FREITAS	2	RANA/0700	RANA/1900
TFLD O-11404		10/08	PAMELA MESSAL	1	RANA/0700	RANA/1900
TFLD O-11403		10/08	RICK MARINELLI	1	RANA/0700	RANA/1900
TFLD O-11621		10/16	JERICK DOMINGUES	1	RANA/0700	RANA/1900
TFLD (T) O-11423		10/08	CINDY PETRICH	1	RANA/0700	RANA/1900
HEQB O-11409		10/08	RITTER BETHEL	1	RANA/0700	RANA/1900
HEQB O-11410		10/08	RIGOBERTO FLORES	1	RANA/0700	RANA/1900
HEQB O-11607		10/17	ROBERT J NEVAREZ	1	RANA/0700	RANA/1900
8. Division/Group Communication Summary						
Function	Channel	RX Frequency N/W	RX Tone/NAC	TX Frequency N/W	TX Tone/NAC	Mode
TACTICAL CDF T1	11	151.2575N	192.8	151.2575N	192.8	A
MEDICAL CALCORD	15	156.0750N	156.7	156.0750N	156.7	A
AIR TO GROUND TAC	14	159.2700N	192.8	159.2700N	192.8	A
EMERGENCY GUARD	16	168.6250N		168.625N	110.9	A
9. Prepared By (Resource Unit Leader)			Approved By (Planning Section Chief)		Date	Time
MIKE FINNERTY			ANN MARX		10/03/2016	1640

Division/Group Assignment List (ICS 204 WF)

1. Incident Name:			3.			
SOBERANES			Branch:		Division/Group:	
2. Operational Period:					NORTH REPAIR GROUP	
DAY						
Date/Time From: 10/04/2016 0700 TUE		Date/Time To: 10/04/2016 1900 TUE				
4. Operations Personnel						
OPERATIONS CHIEF		JOHN ABELL (10/12) SHAUN CRAIG (10/12) ; TROY NELSEN		DIVISION/GROUP SUPERVISOR		B. KAISER (10/8) G. COX (10/8) (T) J. SIMMONS (10/15) (T)
AIR ATTACK SUPERVISOR		VAL LINCH (10/12) MARK NUNEZ (10/12)				
5. Resources Assigned this Period						
Strike Team / Task Force / Resource Designator		LWD	Leader	Number Persons	Drop Off PT./Time	Pick Up PT./Time
HEQB (T) O-11599		10/15	CODY CAMARA	1	RANA/0700	RANA/1900
HEQB (T) O-11429		10/08	BRENT CORKISH	1	RANA/0700	RANA/1900
TFLD O-11616		10/17	ERIK BLANKENSHIP	1	RANA/0700	RANA/1900
FOBS O-11477		10/11	MEREDITH CHILDS	1	RANA/0700	RANA/1900
FOBS O-11563		10/14	JOSEPH RODRIGUEZ	1	RANA/0700	RANA/1900
FEMP O-11468		10/03	CHARLES BROWN	1	RANA/0700	RANA/1900
FEMP O-11578		10/13	DEREK JONES	1	RANA/0700	RANA/1900
FEMT O-11537		10/13	JASEN MATLOCK	1	RANA/0700	RANA/1900
SOF2 O-11479.38		10/12	GALEN R YOUNG	1	RANA/0700	RANA/1900
SOFR (T) O-11573		11/12	KENNETH L THOMPSON	1	RANA/0700	RANA/1900
READ O-11224		10/04	KEVIN KEELER	1	RANA/0700	RANA/1900
READ O-11502		10/12	DAVID IMMCKER	1	RANA/0700	RANA/1900
REAF O-11229		10/03	CLIFF PIPER	1	RANA/0700	RANA/1900
REAF O-11541		10/14	TYLER GREEN	1	RANA/0700	RANA/1900
REAF O-11362		10/08	JAMES HEINTZ	1	RANA/0700	RANA/1900
REAF O-11665		10/08	JENNIFER ERICKSON	1	RANA/0700	RANA/1900
REAF O-10996		10/12	DAVID BATES	1	RANA/0700	RANA/1900
REAF(T) O-11542		10/14	MARY OSTER	1	RANA/0700	RANA/1900
8. Division/Group Communication Summary						
Function	Channel	RX Frequency N/W	RX Tone/NAC	TX Frequency N/W	TX Tone/NAC	Mode
TACTICAL CDF T1	11	151.2575N	192.8	151.2575N	192.8	A
MEDICAL CALCORD	15	156.0750N	156.7	156.0750N	156.7	A
AIR TO GROUND TAC	14	159.2700N	192.8	159.2700N	192.8	A
EMERGENCY GUARD	16	168.6250N		168.625N	110.9	A
9. Prepared By (Resource Unit Leader)			Approved By (Planning Section Chief)		Date	Time
MIKE FINNERTY			ANN MARX		10/03/2016	1640

Division/Group Assignment List (ICS 204 WF)

1. Incident Name:		3.				
SOBERANES		Branch:		Division/Group: NORTH REPAIR GROUP		
2. Operational Period: DAY						
Date/Time From: 10/04/2016 0700	TUE	Date/Time To: 10/04/2016 1900	TUE			
4. Operations Personnel						
OPERATIONS CHIEF	JOHN ABELL (10/12) SHAUN CRAIG (10/12) ; TROY NELSEN		DIVISION/GROUP SUPERVISOR	B. KAISER (10/8) G. COX (10/8) (T) J. SIMMONS (10/15) (T)		
AIR ATTACK SUPERVISOR	VAL LINCH (10/12) MARK NUNEZ (10/12)					
5. Resources Assigned this Period						
Strike Team / Task Force / Resource Designator	LWD	Leader	Number Persons	Drop Off PT./Time	Pick Up PT./Time	
6. Control Operations/Work Assignments:						
<ul style="list-style-type: none"> Assess & implement fire suppression repair as directed by Resource Advisers. Patrol & mop-up to prevent the fire from escaping containment lines. If found, assist in the back haul of excess equipment & trash. 						
7. Special Instructions:						
<ul style="list-style-type: none"> REMS #2 (w/ FEMP's Smith and Giacomini) available from DP 42 for all division/group's in East Zone. Division Group Supervisors must validate cost apportionment on 204's at the end of each shift. Contact Finance Section Chief for questions. Division/Group Supervisors to record location and condition of all UTV's, pumps, and excess equipment, and report to Logistics via Planning Ops. All resources utilizing water in excess of 100 gal must document water usage on the enclosed Water Usage Log. Submit with your time. If you open a gate close the gate!!! Rana Safety Officer (SOF2) Kenneth Rogers (208) 940-2921 / Rana Safety Trailer (831) 659-0460. 						
8. Division/Group Communication Summary						
Function	Channel	RX Frequency N/W	RX Tone/NAC	TX Frequency N/W	TX Tone/NAC	Mode
TACTICAL CDF T1	11	151.2575N	192.8	151.2575N	192.8	A
MEDICAL CALCORD	15	156.0750N	156.7	156.0750N	156.7	A
AIR TO GROUND TAC	14	159.2700N	192.8	159.2700N	192.8	A
EMERGENCY GUARD	16	168.6250N		168.625N	110.9	A
9. Prepared By (Resource Unit Leader)		Approved By (Planning Section Chief)		Date	Time	
MIKE FINNERTY		ANN MARX		10/03/2016	1640	

Division/Group Assignment List (ICS 204 WF)

1. Incident Name:			3.			
SOBERANES			Branch:		Division/Group: SOUTH REPAIR GROUP	
2. Operational Period: DAY						
Date/Time From: 10/04/2016 0700 TUE		Date/Time To: 10/04/2016 1900 TUE				
4. Operations Personnel						
OPERATIONS CHIEF		JOHN ABELL (10/12) SHAUN CRAIG (10/12) ; TROY NELSEN		DIVISION/GROUP SUPERVISOR		ZANE BROWN (10/9)
AIR ATTACK SUPERVISOR		VAL LINCH (10/12) MARK NUNEZ (10/12)				
5. Resources Assigned this Period						
Strike Team / Task Force / Resource Designator		LWD	Leader	Number Persons	Drop Off PT./Time	Pick Up PT./Time
CRW2IA GE FORESTRY 7C C-10218		10/04	TOVAR ARMANDO	20	TORO/0700	TORO/1900
DOZ2 MOOSIOS E-10452		10/16	MIKE CRAIG	2	TORO/0700	TORO/1900
DOZ3 - AAA EQUIPMENT E-10825		10/15	MATT SWANK	2	TORO/0700	TORO/1900
DOZ3 PARLET1 E-10826		10/14	FRANK PARLETT	2	TORO/0700	TORO/1900
WTS2 LITTLE BIG MAN E-10656		10/10	THOMAS STROTHER	1	TORO/0700	TORO/0700
TFLD (T) A-10255.24		10/12	MICHAEL RICHARDS	1	TORO/0700	TORO/1900
FEMP O-11601		10/15	KEVIN LENIHAN	1	TORO/0700	TORO/1900
LEMT O-11604		10/15	JASON MONAHAN	1	TORO/0700	TORO/1900
SOFR O-11399		10/08	NATHAN LEATHERMAN	1	TORO/0700	TORO/1900
ARCH O-11013		10/13	JOSHUA MASSEY	1	TORO/0700	TORO/1900
ARCH O-11012		10/13	EMERY MANUEL	1	TORO/0700	TORO/1900
REAF O-11543		10/15	STEPHEN HODGES	1	TORO/0700	TORO/1900
ENG6 AR E651 E-10520		10/07	MATTHEW FERGUSON	3	INDIAN SPIKE/0700	INDIAN SPIKE/1900
MAST2 NORTHSTATE 186 E-10792		10/06	CRAIG HEADRICK	1	INDIAN SPIKE/0700	INDIAN SPIKE/1900
MAST2 MCKELLAR TREE E-10793		10/08	BRETT STRONG	2	INDIAN SPIKE/0700	INDIAN SPIKE/1900
EXCA GRAHAM E-10057		10/14	CODY EVANS	2	INDIAN SPIKE/0700	INDIAN SPIKE/1900
HEQB O-11405		10/06	PAUL PELLEGRINI	1	INDIAN SPIKE/0700	INDIAN SPIKE/1900
HEQB O-11412		10/10	AUSTIN STYLER	1	INDIAN SPIKE/0700	INDIAN SPIKE/1900
8. Division/Group Communication Summary						
Function	Channel	RX Frequency N/W	RX Tone/NAC	TX Frequency N/W	TX Tone/NAC	Mode
TACTICAL CDF T1	11	151.2575N	192.8	151.2575N	192.8	A
MEDICAL CALCORD	15	156.0750N	156.7	156.0750N	156.7	A
AIR TO GROUND TAC	14	159.2700N	192.8	159.2700N	192.8	A
EMERGENCY GUARD	16	168.6250N		168.6250N	110.9	A
9. Prepared By (Resource Unit Leader)			Approved By (Planning Section Chief)		Date	Time
BOBBY CAHAL			ANN MARX		10/03/2016	2200

Division/Group Assignment List (ICS 204 WF)

1. Incident Name:		3.				
SOBERANES		Branch:		Division/Group:		
2. Operational Period:		SOUTH REPAIR GROUP				
DAY						
Date/Time From: 10/04/2016 0700	TUE	Date/Time To: 10/04/2016 1900	TUE			
4. Operations Personnel						
OPERATIONS CHIEF	JOHN ABELL (10/12) SHAUN CRAIG (10/12) ; TROY NELSEN		DIVISION/GROUP SUPERVISOR	ZANE BROWN (10/9)		
AIR ATTACK SUPERVISOR	VAL LINCH (10/12) MARK NUNEZ (10/12)					
5. Resources Assigned this Period						
Strike Team / Task Force / Resource Designator	LWD	Leader	Number Persons	Drop Off PT./Time	Pick Up PT./Time	
HEQB O-11398	10/09	KEITH MCMILLEN	1	INDIAN SPIKE/0700	INDIAN SPIKE/1900	
HEQB (T) O-10328	10/08	THOMAS KROCK	1	INDIAN SPIKE/0700	INDIAN SPIKE/1900	
HEQB (T) E-10520.7	10/07	CHAD LUNSFORD	1	INDIAN SPIKE/0700	INDIAN SPIKE/1900	
HQEB (T) A-10255.22	10/12	JEREMY MOTHERSHEAD	1	INDIAN SPIKE/0700	INDIAN SPIKE/1900	
6. Control Operations/Work Assignments:						
<ul style="list-style-type: none"> Assess & implement fire suppression repair as directed by Resource Advisers. Patrol & mop-up to prevent the fire from escaping containment lines. If found, assist in the back haul of excess equipment & trash. 						
7. Special Instructions:						
<ul style="list-style-type: none"> REMS #2 (w/ FEMP's Smith and Giacomini) available from DP 42 for all division/group's in East Zone. Division/Group Supervisors must validate cost apportionment on 204's at end of shift. Contact the Finance Section Chief for questions. Division/Group Supervisors to record location and condition of all UTV's, pumps, and excess equipment, and report to Logistics via Planning Ops. All resources utilizing water in excess of 100 gal must document water usage on the enclosed Water Usage Log. Submit with your time. If you open a gate close the gate!!! 						
8. Division/Group Communication Summary						
Function	Channel	RX Frequency N/W	RX Tone/NAC	TX Frequency N/W	TX Tone/NAC	Mode
TACTICAL CDF T1	11	151.2575N	192.8	151.2575N	192.8	A
MEDICAL CALCORD	15	156.0750N	156.7	156.0750N	156.7	A
AIR TO GROUND TAC	14	159.2700N	192.8	159.2700N	192.8	A
EMERGENCY GUARD	16	168.6250N		168.6250N	110.9	A
9. Prepared By (Resource Unit Leader)		Approved By (Planning Section Chief)		Date	Time	
BOBBY CAHAL		ANN MARX		10/03/2016	2200	

Division/Group Assignment List (ICS 204 WF)

1. Incident Name:			3.			
SOBERANES			Branch:		Division/Group: ROAD GROUP EAST	
2. Operational Period: DAY						
Date/Time From: 10/04/2016 0700 TUE		Date/Time To: 10/04/2016 1900 TUE				
4. Operations Personnel						
OPERATIONS CHIEF		JOHN ABELL (10/12) SHAUN CRAIG (10/12) ; TROY NELSEN		DIVISION/GROUP SUPERVISOR		CHRIS LINANE (10/11)
AIR ATTACK SUPERVISOR		VAL LINCH (10/12) MARK NUNEZ (10/12)				
5. Resources Assigned this Period						
Strike Team / Task Force / Resource Designator		LWD	Leader	Number Persons	Drop Off PT./Time	Pick Up PT./Time
GRAD HUMPHREY E-10480		10/18	RONALD HUMPHREY	1	RANA/0700	RANA/1900
GRAD ROEN E-10300		10/14	LENNY BERTAGNOLLI	1	RANA/0700	RANA/1900
WTS1 FIRELINE SUPPORT E-10438		10/16	MATT MICHAELS	1	RANA/0700	RANA/1900
WTS2 NORTHSTATE E-10500		10/17	DARRYL PRUITT	1	RANA/0700	RANA/1900
WTS2 NORTHSTATE E-10763		10/16	BRENT SMALL	1	RANA/0700	RANA/1900
WTS2 BAY AREA E-10761		10/17	ROBERT BRITTON	1	RANA/0700	RANA/1900
WTS2 INDIHAR #028 E-10654		10/10	PHILLIP INDIHAR	1	RANA/0700	RANA/1900
WTS2 49ER E-10437		10/12	DICK SASSER	1	RANA/0700	RANA/1900
WTT2 CNF 222 E-10449		10/11	GUZMAN EDUARDO	2	RANA/0700	RANA/1900
REMS # 2 O-11386		10/06	LARRY R FREITAS	2	RANA/0700	RANA/1900
TFLD O-11614		10/10	MIKE CARTER	1	RANA/0700	RANA/1900
TFLD O-11400		10/08	JESSE KNOX	1	RANA/0700	RANA/1900
TFLD (T) O-11072		10/05	RACHAEL HANSEN	1	RANA/0700	RANA/1900
TFLD (T) O-11597		10/16	JOSH DUBOIS	1	RANA/0700	RANA/1900
TFLD (T) O-11680		10/17	BEN HENDRICKS	1	RANA/0700	RANA/1900
FOBS O-11572		10/17	JOHN DONAHUE	1	RANA/0700	RANA/1900
FOBS (T) O-11474		10/11	THOMAS STEVENS	1	RANA/0700	RANA/1900
SOFR O-11529		10/15	LINDA FERGUSON	1	RANA/0700	RANA/1900
8. Division/Group Communication Summary						
Function	Channel	RX Frequency N/W	RX Tone/NAC	TX Frequency N/W	TX Tone/NAC	Mode
TACTICAL CDF T1	11	151.2575N	192.8	151.2575N	192.8	A
MEDICAL CALCORD	15	156.0750N	156.7	156.0750N	156.7	A
AIR TO GROUND TAC	14	159.2700N	192.8	159.2700N	192.8	A
EMERGENCY GUARD	16	168.6250N		168.6250N	110.9	A
9. Prepared By (Resource Unit Leader)			Approved By (Planning Section Chief)		Date	Time
MIKE FINNERTY			ANN MARX		10/03/2016	1640

Division/Group Assignment List (ICS 204 WF)

1. Incident Name:			3.			
SOBERANES			Branch:	Division/Group: ROAD GROUP EAST		
2. Operational Period: DAY						
Date/Time From:	TUE	Date/Time To:	TUE			
10/04/2016 0700		10/04/2016 1900				
4. Operations Personnel						
OPERATIONS CHIEF	JOHN ABELL (10/12) SHAUN CRAIG (10/12) ; TROY NELSEN		DIVISION/GROUP SUPERVISOR	CHRIS LINANE (10/11)		
AIR ATTACK SUPERVISOR	VAL LINCH (10/12) MARK NUNEZ (10/12)					
6. Control Operations/Work Assignments:						
<ul style="list-style-type: none"> Assess & implement fire suppression repair as directed by Resource Advisers. Patrol & mop-up to prevent the fire from escaping containment lines. If found, assist in the back haul of excess equipment & trash. 						
7. Special Instructions:						
<ul style="list-style-type: none"> REMS #2 (w/ FEMP's Smith and Giacomini) available from DP 42 for all division/group's in East Zone. Please be mindful of your driving habits, other drivers, and road conditions. We've had several incidents and near misses along our routes and roadways. Division/Group Supervisors to record location and condition of all UTV's, pumps, and excess equipment, and report to Logistics via Planning Ops. Division Group Supervisors must validate cost apportionment on 204's at the end of each shift. Contact Finance Section Chief for questions. All resources utilizing water in excess of 100 gal must document water usage on the enclosed Water Usage Log. Submit with your time. If you open a gate close the gate!!! SOFR Linda Ferguson is assigned to Divisions J/K/L and Road Group East Rana Safety Officer (SOF2) Kenneth Rogers (208) 940-2921 / Rana Safety Trailer (831) 659-0460. 						
8. Division/Group Communication Summary						
Function	Channel	RX Frequency N/W	RX Tone/NAC	TX Frequency N/W	TX Tone/NAC	Mode
TACTICAL CDF T1	11	151.2575N	192.8	151.2575N	192.8	A
MEDICAL CALCORD	15	156.0750N	156.7	156.0750N	156.7	A
AIR TO GROUND TAC	14	159.2700N	192.8	159.2700N	192.8	A
EMERGENCY GUARD	16	168.6250N		168.6250N	110.9	A
9. Prepared By (Resource Unit Leader)			Approved By (Planning Section Chief)		Date	Time
MIKE FINNERTY			ANN MARX		10/03/2016	1640

Division/Group Assignment List (ICS 204 WF)

1. Incident Name:			3.			
SOBERANES			Branch:		Division/Group:	
2. Operational Period:			WEST REPAIR			
DAY						
Date/Time From: 10/04/2016 0700 TUE		Date/Time To: 10/04/2016 1900 TUE				
4. Operations Personnel						
OPERATIONS CHIEF		JOHN ABELL (10/12) SHAUN CRAIG (10/12) ; TROY NELSEN		DIVISION/GROUP SUPERVISOR		TIMOTHY WHORTON (10/12) WILLIAM F MARCKS (10/15) (T)
AIR ATTACK SUPERVISOR		VAL LINCH (10/12) MARK NUNEZ (10/12)				
5. Resources Assigned this Period						
Strike Team / Task Force / Resource Designator		LWD	Leader	Number Persons	Drop Off PT./Time	Pick Up PT./Time
CRW2IA ASI ARDEN 6A C-10224		10/04	JEFFERY HARRISON	20	MOLERA/0600	MOLERA/1800
CRW2IA BLACK EAGLES - 2 C-10250		11/05	GUSTAVO SANTAYO- GALLEGOS	20	MOLERA/0600	MOLERA/1800
ENG3 MNF 42 E-10808 **		10/08	ANDREW J QUICK	5	MOLERA/0600	MOLERA/1800
ENG3 LPF 342 E-10821.4 **		10/10	BRAD CHRISTENSEN	5	MOLERA/0600	MOLERA/1800
ENG6 MTO PATROL91 E-10819		10/14	DANA ST. OEGGER	2	MOLERA/0600	MOLERA/1800
ENG6 YUROC 661 E-10828		10/16	WILLIAM CARPENTER III	5	MOLERA/0600	MOLERA/1800
DO22 VENTANA RANCH 119 E-10697		10/08	ROBIN MULLNIX	1	MOLERA/0600	MOLERA/1800
EXCA2 GRAHAM E-10670		10/14	JEFF GRAHAM	1	MOLERA/0600	MOLERA/1800
EXCA3 - VENTANA RANCH E-10834		10/16	APOLONIA CAMACHO	2	MOLERA/0600	MOLERA/1800
EXCA4 ALGERINE 25080 E-10824		10/16	MONTE WEST	2	MOLERA/0600	MOLERA/1800
EXCA2 WYATT 16 E-10668		10/15	ADRIAN FUKUDA	1	MOLERA/0600	MOLERA/1800
MAST BORDGES TIMBER 2 E-10396		10/10	JUAN LOPEZ	1	MOLERA/0600	MOLERA/1800
MAST BORDGES TIMBER 1 E-10395		10/10	JOHN THOULANDER	1	MOLERA/0600	MOLERA/1800
CHIP TOUGH EQPT E-10816		10/11	JOSHUA ROBERTS	2	MOLERA/0600	MOLERA/1800
CHIP2 VENTANA RANCH E-10833		10/16	CLINTON ZOBEL	2	MOLERA/0600	MOLERA/1800
WTS2 DUST BUSTERS E-10161		10/11	GREG HOLT	1	MOLERA/0600	MOLERA/1800
WTS2 DUST BUSTERS E-10476		10/13	BRIAN SCOTT	1	MOLERA/0600	MOLERA/1800
WTT2 INF 21 E-10023		10/05	LUCAS HURLEY	2	MOLERA/0600	MOLERA/1800
REMS # 1 O-11385		10/08	ERIK ROMAN RUBALCAVA	2	MOLERA/0600	MOLERA/1800
AMBU AMR 66 E-10315		10/03		2	MOLERA/0600	MOLERA/1800
8. Division/Group Communication Summary						
Function	Channel	RX Frequency N/W	RX Tone/NAC	TX Frequency N/W	TX Tone/NAC	Mode
TACTICAL NIFC T3	7	168.6000N		168.6000N		A
MEDICAL CALCORD	15	156.0750N	156.7	156.0750N	156.7	A
AIR TO GROUND TAC	14	159.2700N	192.8	159.2700N	192.8	A
EMERGENCY GUARD	16	168.6250N		168.6250N	110.9	A
9. Prepared By (Resource Unit Leader)			Approved By (Planning Section Chief)		Date	Time
BOBBY CAHAL			ANN MARX		10/03/2016	1640

Division/Group Assignment List (ICS 204 WF)

1. Incident Name:			3.			
SOBERANES			Branch:		Division/Group:	
2. Operational Period:			WEST REPAIR			
DAY						
Date/Time From: 10/04/2016 0700 TUE		Date/Time To: 10/04/2016 1900 TUE				
4. Operations Personnel						
OPERATIONS CHIEF		JOHN ABELL (10/12) SHAUN CRAIG (10/12) ; TROY NELSEN		DIVISION/GROUP SUPERVISOR		TIMOTHY WHORTON (10/12) WILLIAM F MARCKS (10/15) (T)
AIR ATTACK SUPERVISOR		VAL LINCH (10/12) MARK NUNEZ (10/12)				
5. Resources Assigned this Period						
Strike Team / Task Force / Resource Designator		LWD	Leader	Number Persons	Drop Off PT./Time	Pick Up PT./Time
STEN (T) E-10821.7		10/10	JEFF PINA	1	MOLERA/0600	MOLERA/1800
HEQB O-11646		10/18	LEVY M RENTZ	1	MOLERA/0600	MOLERA/1800
HEQB O-11679		10/17	RODNEY G HELZER	1	MOLERA/0600	MOLERA/1800
HEQB (T) O-11598		10/15	CODY CANNING	1	MOLERA/0600	MOLERA/1800
FEMP O-11151		10/06	JEFFREY DACPANO	1	MOLERA/0600	MOLERA/1800
FEMP O-11364		10/06	ZACHARY BROWN	1	MOLERA/0600	MOLERA/1800
FEMP O-11153		09/29	MATT PETERS	1	MOLERA/0600	MOLERA/1800
FEMT O-11269		10/08	JOBEE FARRER	1	MOLERA/0600	MOLERA/1800
SOF2 O-11396		10/08	CRAIG MARTIN	1	MOLERA/0600	MOLERA/1800
SOFR (T) O-11566		10/14	WILLIAM HARRIS	1	MOLERA/0600	MOLERA/1800
READ O-11545		10/14	KYLE KINPORTS	1	MOLERA/0600	MOLERA/1800
ARCH O-11488		10/14	ALEX VINDAS CRUZ	1	MOLERA/0600	MOLERA/1800
8. Division/Group Communication Summary						
Function	Channel	RX Frequency N/W	RX Tone/NAC	TX Frequency N/W	TX Tone/NAC	Mode
TACTICAL NIFC T3	7	168.6000N		168.6000N		A
MEDICAL CALCORD	15	156.0750N	156.7	156.0750N	156.7	A
AIR TO GROUND TAC	14	159.2700N	192.8	159.2700N	192.8	A
EMERGENCY GUARD	16	168.6250N		168.6250N	110.9	A
9. Prepared By (Resource Unit Leader)			Approved By (Planning Section Chief)		Date	Time
BOBBY CAHAL			ANN MARX		10/03/2016	1640

Division/Group Assignment List (ICS 204 WF)

1. Incident Name:		3.				
SOBERANES		Branch:		Division/Group: WEST REPAIR		
2. Operational Period: DAY						
Date/Time From: 10/04/2016 0700	TUE	Date/Time To: 10/04/2016 1900	TUE			
4. Operations Personnel						
OPERATIONS CHIEF	JOHN ABELL (10/12) SHAUN CRAIG (10/12) ; TROY NELSEN		DIVISION/GROUP SUPERVISOR	TIMOTHY WHORTON (10/12) WILLIAM F MARCKS (10/15) (T)		
AIR ATTACK SUPERVISOR	VAL LINCH (10/12) MARK NUNEZ (10/12)					
5. Resources Assigned this Period						
Strike Team / Task Force / Resource Designator	LWD	Leader	Number Persons	Drop Off PT./Time	Pick Up PT./Time	
6. Control Operations/Work Assignments:						
<ul style="list-style-type: none"> Assess & implement fire suppression repair as directed by Resource Advisers. Patrol & mop-up to prevent the fire from escaping containment lines. If found, assist in the back haul of excess equipment & trash. 						
7. Special Instructions:						
<ul style="list-style-type: none"> REMS #1 (w/ FEMP's Farrer and Peters) available from DP 106 for West Zone. Division/Group Supervisors must validate cost apportionment on 204's at end of shift. Contact the Finance Section Chief for questions. Division/Group Supervisors to record location and condition of all UTV's, pumps, and excess equipment, and report to Logistics via Planning Ops. All resources utilizing water in excess of 100 gal must document water usage on the enclosed Water Usage Log. Submit with your time. If you open a gate close the gate!!! ** Resources are available for IA at Big Sur Sta. 						
8. Division/Group Communication Summary						
Function	Channel	RX Frequency N/W	RX Tone/NAC	TX Frequency N/W	TX Tone/NAC	Mode
TACTICAL NIFC T3	7	168.6000N		168.6000N		A
MEDICAL CALCORD	15	156.0750N	156.7	156.0750N	156.7	A
AIR TO GROUND TAC	14	159.2700N	192.8	159.2700N	192.8	A
EMERGENCY GUARD	16	168.6250N		168.6250N	110.9	A
9. Prepared By (Resource Unit Leader)		Approved By (Planning Section Chief)		Date	Time	
BOBBY CAHAL		ANN MARX		10/03/2016	1640	

AIR OPERATIONS SUMMARY
ICS 220

Prepared By: John Crotty
 AOB

Prepared Date: 10/03/2016

Prepared Time: 1630

1. INCIDENT NAME: Soberanes Fire	2. OPS PERIOD DATE: 10/04/2016	START TIME: 0700	END TIME: 2100	SUNRISE: 0704	SUNSET: 1849
----------------------------------	--------------------------------	------------------	----------------	---------------	--------------

3. REMARKS (Safety Notes, Hazards, Air Operations Special Equipment, etc.): Track all dipsite locations/number of dips/gallons taken. Track all drop locations/number of drops/gallons dropped. All GPS data to be collected in DEGREES, DECIMAL MINUTES format. AVOID Aerial Application of Retardant/Foam/Agent within 300' of Waterways, Bodies of Water, etc. If Retardant/Foam/Agent is dropped within these areas immediately notify the AOB and provide the following information: Lat/Long, estimated number of gallons and a map detailing the area.
Fly with Transponder 1255.

4. Helibase Information:
 Name: Ranch Helibase
 Latitude: 36 26.133
 Longitude: 121 37.871
 Name: Miller Helibase / MRB
 Latitude: 36 14.753
 Longitude: 121 25.811

Air Attack Briefing 132.0250 AM (A-10002)

For scheduling recon flights contact Ranch HB communications @ 925-407-6353

All rotor wing aircraft will be on the ground at 1900.
 TUSI Advisory 126.200 for restricted airspace.

5. TFR's:
 Request #: A-10129
 Polygon: NIM
 Altitude: 9000' MSL
 NOTAMS: 6/9747
 Frequency: 119.1250
<http://tfr.faa.gov/tfr2/list.html>

6. PERSONNEL	NAME	PHONE #	7. FREQUENCIES	TX	ZONE	RX	ZONE	AM/FM	8. MEDIVAC SHIP INFORMATION Day: Night:
AOBD	John Crotty	805-440-6186	A/G Command	159.4500	192.8 (16)	159.4500	192.8 (16)	FM	Name: H-407 Make/Model: Bell UH-1H
AOBD (T)	Brian Sexton	805-350-3717		A-10006					Location: Hunter Liggett HB
ASGS	Al Driesbach	805-703-0649	A/G Tactical	159.2700	192.8 (16)	159.2700	192.8 (16)	FM	Request Procedure for this Aircraft. See Medical Plan.
ASGS	Curt Warner	805-478-1231		A-10005					H-407 – Hoist capable
Ranch Helibase									
HEB1 - Ranch	Don Clark	928-245-2539	A/A Primary	119.1250	A-10.000	119.1250			Mercy Air 20- Air Ambulance
HEB1(t)	Chad Bergren	541-219-2594							Location: Hunter Liggett
Miller Retardant Plant	Will remain open	831-674-5689	A/A Secondary						831-385-0302
HLCO	Dave Phillips	209-770-0517	AIR TACTICS	169.0875	A-10004	169.0875			Cal Star 5- air ambulance
HLCO(t)	Jonathan Harris	805-550-7903	TOLC	123.0250		123.0250		AM	Location: Salinas
ATGS	Mark Nunez	805-975-5227	DECK	168.3500		168.3500		FM	831-424-3815
ATGS	Val Linch	661-487-2636	Air Guard	168.6250	110.9 (1)	168.6250		FM	

HELICOPTERS

FAA #	T	MAKE/ MODEL	BASE	START	AVAIL	REMARKS	FAA #	T	MAKE/MODEL	BASE	START	AVAIL	REMARKS
N613CK	1	SH-61 EU	Ranch	0700	0800	A-10254 Croman	N371SH	3	Astar	Ranch	0700	0800	A-10200 Shorthaul
N4035S H-783	1	S-64E EU	Ranch	0700	0800	A-10023 Siller	N383SH	3	Bell 206 L3	Toro	0700	0800	A-10211 CWN Recon/IR
N471CH	1	CH-47 EU	Ranch	0700	0800	A-10243 Columbia	N911FS	3	Bell 407	Ranch	0700	0800	A-10032 HLCO CWN
N2FH	1	S-70 EU	Ranch	0700	0800	A-10244 Firehawk	N718GH H-535	3	Astar B3	Ranch	0700	0800	A-10263 EU
CFXFT	1	K-Max EU	Ranch	0700	0800	A-10089 Heliquist							
							N205HQ H-530	2	Bell 205-A1++	Ranch	0700	0800	A-10067 EU
							N205WW H-527	2	Bell 205-A1++	Ranch	0700	0800	A-10270 Heli/Burn EU
							N205BT H-517	2	Bell 205 A1++	Ranch	0700	0800	A-10142 PSD EU
							N689H	2	Bell 205++	Ranch	0700	0800	A-10255 Rappel EU
							N107Z H-507	2	Bell 209	Ranch	0700	0800	A-10193

FIXED WING

N108SA	1	690A	MRY	0700	0800	A-10175							
N690RA AA07	1	690A	MRY	0700	0800	A-10021							

Missions:	Aircraft	AVAIL	Departure Point	Destination
Air Attack		0800	MRY (Monterey)	Fire
Bucket Support	Varies	0800	Ranch HB	Fire
Cargo	T-2, T-3	0800	Ranch HB	Fire
PAX	T-2, T-3	0800	Ranch HB, ICP	Fire
MEDIVAC	H-407	0800	Hunter Liggett	As Directed
Recon/Mapping	T-3	0800	Ranch HB, ICP	Fire
Retardant & Lead Plane	Varies	Varies	Various Tanker Bases	Fire
IA within TFR		0800	Ranch HB	As Directed
Initial Attack Assistance	Varies	0800	Ranch HB	As requested

Provide Tactical Aerial Support

Bucket support requested by Ops, Branch, Division or Air Attack

Type 2 or Type 3 Helicopter as requested

Type 2 or Type 3 Helicopter as requested

Request through ICP Communications & MEDL on Command Repeater. Give location: lat/long if known. Check Medical plan/IAP.

As requested/7AC(3SH) IR mapping.

Request through Air Attack via Initial Air/Ground. Give location and ground contact.

Aircraft to be available for IA within TFR. IA missions within TFR are requested thru OPS or Air Attack. Notify LP Dispatch

Will be requested through LP Dispatch.

Soberanes Fire – Safety Message

INCIDENT #CA-BEU-003422

DATE:10.4.16

TIME: 0700-1900

Major Hazards

- *Traffic Hazards and Driving*
 - *Working with or under helicopters*
 - *Line Construction in Tassajara/Div.CC*
 - *Working around Heavy Equipment in the suppression repair groups*
 - *Hazard Trees in Fire area and Weakened Trees in camps*
- **Weather and Fire Behavior*
 - **Hydration and Fatigue*
 - **Poison oak and bees*

Six Minutes for Safety –Lead Time...Bias for Action

Leaders in the wildland fire service are not only empowered but also duty-bound to act on a situation that is within our power to affect, even without direction from above. This empowerment is not intended to encourage freelancing. In a high-risk environment, freelancing is a dangerous and unpredictable element, causing more harm than good. Ultimately, leaders are always accountable for their actions.

- A bias for action acknowledges wildfire as an environment where events do not always go according to plan.
- At times during an incident, one person may be the only one in a position to see what needs to be done and to make it happen.
- Time may not permit gathering all of the information that one might like to have. If you wait until you have all the facts to be 100% sure, it will almost always be too late.

In these time critical situations, fire leaders use judgment, act within the intent of their leaders, work in unison with others, develop and communicate a plan, and then inform leaders of actions as soon as safely possible. On a chaotic and rapidly developing wildfire, one person taking the initiative can make all the difference in seizing and taking advantage of an opportunity. Being hesitant, risk-averse, or indecisive can expose firefighters to greater long-term risks and translate into a waste of time, opportunity, energy, and money.

6 Minutes - Discussion Points

- Discuss the difference between freelancing and a bias for action.
- Describe and discuss instances of taking appropriate action and indecisiveness or non-action.
- How are some ways we train for situations requiring a bias for action?

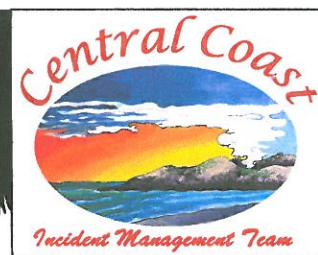
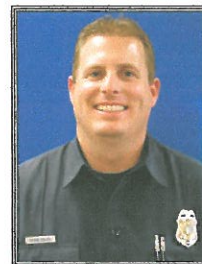
“Bias” definition: a strong interest in something or ability to do something.

Rick Bertram SOF2 805-471-8076

We honor our fallen Brother

Engineer Ryan Osler (VNC)

L.O.D.D. September 21, 2016



INCIDENT RISK ANALYSIS SOBERANES FIRE CA-BEU-003422 (ICS 215a) Day Shift

DIV/BR	HAZARDOUS ACTIONS / CONDITIONS	MITIGATIONS / WARNINGS / REMEDIES
ALL	TRAFFIC HAZARDS AND DRIVING	<ul style="list-style-type: none"> • Use caution while driving on all incident roads, nightly moisture/fog may create slick roads. • Drive defensively! Expect the unexpected around every curve. Expect bike riders. • Watch for other vehicles, distracted drivers, rocks and debris on the roadway. • Beware of heavy local traffic on Carmel Valley Road, Hwy. 68 and Hwy 1. • Roads are narrow with steep drop-offs. • Flagger on the side of North Coast Ridge road indicates a false berm or soft shoulder created by heavy equipment. Watch out for soft shoulders.
ALL	WEATHER AND FIRE BEHAVIOR	<ul style="list-style-type: none"> • Winds increase today out of N to NW behind the weak front in morning (10mph). • Afternoon winds increase to 15 to 20 mph with gust to 25-30 mph. • Winds will test weakened trees, stay alert around snags. • Communicate any observed changes in weather and fire behavior. • Maintain adequate escape routes and safety zones. Set trigger points. • Expect the unexpected with drought stricken fuels at critically low fuel moistures. • Historical trends indicate changes in the fire environment support large fire growth.
Tassajara CC	LINE CONSTRUCTION	<ul style="list-style-type: none"> • Conduct thorough briefings for all personnel involved (inside rear cover IRPG). • Ensure LCES in place prior to engagement (IRPG p. 7). • Establish adequate safety zones (IRPG p.8) and escape routes. • Use Downhill Line Checklist (IRPG p. 9). • Use "Look Up, Look Down, Look Around" procedures (IRPG p. 3-4) • Utilize Risk Management Process (IRPG p.1).
ALL	MOP-UP	<ul style="list-style-type: none"> • Evaluate areas for hazard trees and locate stump holes for avoidance. • Monitor fatigue; adjust shifts to increase rest where appropriate. • Provide motivation to workers to maintain situational awareness and avoid complacency. • Evaluate mop up distances against what is safe and necessary. • Review and follow "Look Up, Look Down, Look Around" procedures (IRPG p. 3-4). • Survey your work area. Assess the hazards and implement appropriate mitigations.
ALL	COMMUNICATIONS	<ul style="list-style-type: none"> • Share your Situational Awareness with those who also have a need. • Radio Communications may be poor in some areas. Use human repeaters. • Ensure all personnel are familiar with the incident communications plan. The Soberanes Fire is using 2 different groups. Ensure you are using the proper one. • Don't be afraid to over communicate. • Ensure everyone gets a proper and thorough briefing. • Know who you are working for.
ALL	AVIATION OPERATIONS	<ul style="list-style-type: none"> • Use risk analysis to determine if any given flight is necessary. • Use air to ground tactical frequency when assigned a specific aircraft. • Use air to ground command frequency to communicate with air attack. • Use concise statements & clock directions when directing aircraft IRPG pg. 57. • Review and follow "Aviation Watch-Out Situations" on page 44, IRPG. • Remember visibility changes minute by minute.
ALL	HEAVY EQUIPMENT OPERATIONS	<ul style="list-style-type: none"> • Ensure communications are established with operators. • Use hand signals if other communications are unavailable. • Maintain a 50'-100' exclusion area around equipment. • When in timber, increase distance to 2.5 times the height of the tress. • Never work below or behind heavy equipment.
ALL	ENVIRONMENTAL HAZARDS	<ul style="list-style-type: none"> • Keep alert for wildlife, cattle, rattlesnakes, bees, and insects. • Watch footing and hand placement around rocks. • Determine if any personnel under your control are allergic to bee stings. • Ensure all personnel can identify poison oak in work and camp areas. • Identify employees who are highly receptive to poison oak and minimize their exposure. • Utilize line medics at the earliest appearance of allergic reactions.
ALL	Spike Camps	<ul style="list-style-type: none"> • Watch for dead or drought damaged trees in sleeping areas. • Maintain hygiene to avoid camp crud. Wash hands often in camp. • Sleep only in designated areas sleeping areas. • Drive slowly and watch for fellow firefighters while driving (5mph in camp). • Ensure you get a full briefing daily and document it. • Check in when off the line to maintain accountability with your supervisor.
<p>INCIDENT NAME:</p> <h1 style="text-align: center;">Soberanes Fire</h1> 		<p style="text-align: center;">Operational Period: 0700-1900</p> <h2 style="text-align: center;">October 4, 2016</h2> <hr/> <p>DATE AND TIME PREPARED:</p> <p style="text-align: center;">October 3, 2016 @ 1400 hours</p>

MEDICAL PLAN ICS 206	1. INCIDENT NAME	2. DATE PREPARED	3. TIME PREPARED	4. OPERATIONAL PERIOD
	Soberanes	10/3/2016	2000	Day 10/4/2016 0700-1900

5. INCIDENT MEDICAL AID STATIONS

MEDICAL AID STATIONS	LOCATION	PARAMEDICS	
		YES	NO
Frontline Medical Trailer	Toro ICP / Rana Camp	X	

6. TRANSPORTATION

A. AIR AMBULANCES

NAME	LOCATION	PHONE	PARAMEDICS	
			YES	NO
Kern County H407 ALS / Hoist / NVG / Day-Night Missions	Fort Hunter Liggett	Soberanes Comms	X	

B. GROUND AMBULANCES & REM TEAMS

NAME	LOCATION		PARAMEDICS	
			YES	NO
MCRFD M5563 (Incident Dedicated)	Rana Camp 24 Hours	Command	X	
AMR M66 (Incident Dedicated)	Big Sur 24 Hours	Command	X	
AMR M24, M35, M36 (Non-Dedicated)	Big Sur / Soledad / King City	9-1-1	X	
FHL Fire Department (Non-Dedicated)	Fort Hunter Liggett	9-1-1	X	

7. HOSPITALS

NAME	ADDRESS	TRAVEL TIME		PHONE	HELIPAD		BURN CTR	
		AIR	GRND		YES	NO	YES	NO
Natividad Medical Center (Level 2 Trauma)	1441 Constitution Blvd. Salinas, CA N 36 41.85 W 121 38.07	15 Min	30 Min	(831) 424-9461	X			X
Salinas Valley	450 E. Romie Ln. Salinas, CA	N/A	15 Min	(831) 757-2673		X		X
CHOMP	23625 Holman Highway Monterey, CA	N/A	30 Min	(831) 624-1945		X		X
MEE Memorial	300 Canal St. King City, CA N 36 12.33 W 121 07.95	10 Min	1.75 Hr	(831) 385-7220	X			X
Santa Clara Valley Medical Center (LVL 1 Trauma, Burn Center)	751 Bascom Ave. San Jose, CA 95128 N 37 18.85 W 121 56.05	36 Min	1.5 Hr	(408) 885-6912	X		X	
Community Regional (LVL 1 Trauma, Burn Center)	2823 Fresno St. Fresno, CA N 36 44.62 W 119 47.12	45 Min	2.5 Hr	(559) 459-7430	X		X	

8. MEDICAL EMERGENCY PROCEDURES

LINE MEDICAL EMERGENCY DAY PLAN:

CAMP MEDICAL EMERGENCY 24 HOUR PLAN

Crew Supervisor to contact Division Supervisor/Operations with patient complaint, condition and location.

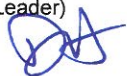

Contact incident Communications with patient complaint, condition and location, via LOGs Net or Command frequency as needed.

Division Supervisor/Operations contacts Communications:

- Division Supervisor or *POC to use "**Medical Incident Report**" worksheet on next page
- Division Supervisor or *POC will run medical emergency on the command channel
- Communications contacts Medical Unit Leader on Command channel or (cell phone, list number)
- Medical Unit Leader position is responsible for:
 1. Go to incident Communications location.
 2. Ensure Communications dispatches appropriate ground/air transport resources.
 3. Notify receiving hospital of injury status.
 4. Develop primary and contingency transport plan
 5. Notify Safety, Logistics, Operations

- Medical Unit Leader will ensure contacts made to:
 - Safety, Logistics, Operations
- Medical Unit Leader will:
 1. Contact incident Communications to dispatch ground / air transport resources.
 2. Notify receiving hospital of injury status.
 3. Develop primary and contingency transport plan.

*POC (Point of Contact) and Operations

ICS 206	9. PREPARED BY: (Medical Unit Leader)	10. REVIEWED BY: (Safety Officer)
	Devon Haggie MEDL 	Rick Bertram SOF2 

Medical Incident Report

Use items one through nine to communicate situation to communications/dispatch.

1. CONTACT COMMUNICATIONS DECLARE: "MEDICAL EMERGENCY" OR "NON-EMERGENCY MEDICAL TRANSPORT"
 Ex: "Communications, Div. Alpha. Stand-by for a medical emergency on Div. Alpha" (If life threatening request designated frequency be cleared for emergency traffic.)

2. INCIDENT STATUS: Provide incident summary and command structure.

- **Nature of Injury/Illness** Describe the injury (Ex: Broken leg with bleeding) _____

- **Incident Name** Geographic Name + "Medical" (Ex: Trout Meadow Medical) _____

- **Incident Commander (Division Sup. or designee)** Name of IC _____

- **Patient Care** Name of Care Provider (Ex: EMT Smith) _____

3. INITIAL PATIENT ASSESSMENT: Complete this section for each pt. This is only a brief, initial assessment. Provide additional pt. info after completing this report.

- **Number of Patients:** _____ - **Male / Female:** _____ - **Age:** _____ - **Weight:** _____

- **Conscious?** YES NO = MEDEVAC! - **Breathing?** YES NO = MEDEVAC!

- **Mechanism of Injury** What caused the injury? _____

- **Location, Lat/Long** (Datum WGS84) Ex: N 40° 42.45' x W 123° 03.24' _____

4. SEVERITY OF EMERGENCY: TRANSPORT PRIORITY

SEVERITY	TRANSPORT PRIORITY
<input type="checkbox"/> URGENT-RED Life threatening injury or illness. Ex: Unconscious, difficulty breathing, bleeding severely, 2° – 3° burns more than 4 palm sizes, heat stroke, disoriented.	Ambulance or MEDEVAC helicopter. Evacuation need is IMMEDIATE.
<input type="checkbox"/> PRIORITY-YELLOW Serious Injury or illness. Ex: Significant trauma, not able to walk, 2° – 3° burns not more than 1-2 palm sizes.	Ambulance or consider air transport if at remote location. Evacuation may be DELAYED.
<input type="checkbox"/> ROUTINE-GREEN Not a life threatening injury or illness. Ex: Sprains, strains, minor heat-related illness.	Non-Emergency. Evacuation considered Route of Convenience.

5. TRANSPORT PLAN:

Air Transport: (Agency Aircraft Preferred)

Helispot Short-haul/Hoist Life Flight Other

Ground Transport:

Self-Extract Carry-Out Ambulance Other

6. ADDITIONAL RESOURCE/EQUIPMENT NEEDS:

Paramedic/EMT(s) SKED/Backboard/C-Collar Crew(s) Burn Supplies Oxygen

Trauma Bag Medication(s) IV/Fluid(s) Cardiac Monitor/AED

Other (i.e. splints, rope rescue, wheeled litter)

7. COMMUNICATIONS:

- Run Medical Emergency on Command - Coordinate with air ambulance on CALCORD tone 6

8. EVACUATION LOCATION:

- **Lat/Long** (Datum WGS84) EX: N 40 42.45' x W 123 03.24 ' _____

- **Patient's ETA to Evacuation Location:** _____

Helispot/Extraction Size and Hazards: _____

9. CONTINGENCY: If primary options fail, what actions can be implemented in conjunction with primary evacuation method? Be thinking ahead...

REMEMBER: -Confirm ETA's of resources ordered -Act according to your level of training
 - If air or ground ambulance is **DELAYED:** Package and transport patient to rendezvous with incoming Ambulance.
 Re-route EMS helicopter to rendezvous point as appropriate.

INCIDENT RADIO COMMUNICATIONS PLAN

Incident Name: **EAST OPERATIONS (DPH Radio Group 13)**

Date/Time Prepared: **10/3/2016 1900hrs**

Operational Period Date/Time: **10/4-10/5/2016 0700 - 0700**

Ch #	Function	Channel Name/Trunked Radio System Talkgroup	Assignment	RX Freq N or W	RX Tone/NAC	TX Freq N or W	TX Tone/NAC	Mode A, D or M	Remarks
1	COMMAND	C35 Junip. Serra	ALL DIVISIONS	172.5500		164.8625	136.5	A	All Repeaters in East Operations Linked
2	COMMAND	C33 Chews Rdg.	ALL DIVISIONS	167.1500		172.1375	136.5	A	
3	COMMAND	C37 SKY RANGH	ALL DIVISIONS	163.0750		172.7500	136.5	A	back to ICP
4	COMMAND	C-4 MILLER	ALL DIVISIONS	166.6125		168.4000	136.5	A	
5	COMMAND	C8 Black Butte	ALL DIVISIONS	169.5375		164.7125	136.5	A	
6	COMMAND	C-9 PINYON PK	ALL DIVISIONS	170.0125		165.2500	136.5	A	
7	TACTICAL	NIFC T7	J/K/L	168.2500		168.2500		A	
8	TACTICAL	R5 T4	GG	166.5500		166.5500		A	
9	TACTICAL	R5 T6	M/AA	168.2375		168.2375		A	
10	TACTICAL	VFIRE 25	TASSAJARA GRP	154.2875	156.7	154.2875	156.7	A	
11	TACTICAL	CDF T1	SOUTH RG, NORTH RG, ROAD GRP EAST	151.2575	192.8	151.2575	192.8	A	RG=REPAIR GROUP
12	TACTICAL	VTAC 11	CC	151.1375	156.7	151.1375	156.7	A	
13	A/G CMD	A/G CMD	ALL DIVISIONS	159.4500	192.8	159.4500	192.8	A	
14	A/G TAC	A/G TAC	ALL DIVISIONS	159.2700	192.8	159.2700	192.8	A	
15	MEDICAL	CALCORD	ALL DIVISIONS	156.0750	156.7	156.0750	156.7	A	MEDICAL COORDINATION
16	EMERGENCY	GUARD 21	ALL DIVISIONS	168.6250		168.6250	110.9	A	AIR GUARD 21
17									NOTE: The # after the
18									Guard channel is the
19									date of last clone.
20									

Prepared by: **David Paschke** (Communications Unit)
 Kevin Harper COM1 Pn 831-484-9674

Incident Location
 5 MILES SOUTH OF CARMEL, GARRAPATA STATE PARK, MONTEREY CALIFORNIA

The convention calls for frequency lists to show four digits after the decimal place, followed by either an "N" or a "W", depending on whether the frequency is narrow or wide band. Mode refers to either "A" or "D" indicating analog or digital (e.g. Project 25) or "M" indicating mixed mode. All channels are shown as it programmed in a control station, mobile or portable radio. Repeater and base stations must be programmed with the RX and TX reversed.

Air Guard must be in the last channel of every plan (168.6250, PL 110.9 on TX only) Once 205 is complete, email it to com205@fire.ca.gov or fax to the local ECC and ask them to email it for you.

ICS 205 Excel 3/2007

INCIDENT RADIO COMMUNICATIONS PLAN		Incident Name WEST OPERATIONS (DPH radio Group 14)			Date/Time Prepared 10/3/2016 1900HRS.	Operational Period Date/Time 10/4-10/5/2016 0700 - 0700			
Ch #	Function	Channel Name/Trunked Radio System Talkgroup	Assignment	RX Freq N or W	RX Tone/NAC	TX Freq N or W	Tx Tone/NAC	Mode A, D or M	Remarks
1	COMMAND	C10 Lighthouse	ALL DIVISIONS	170.4125N		165.9625N	136.5	A	ALL REPEATERS IN WEST
2	COMMAND	C34 Double Cone	ALL DIVISIONS	170.0875N		162.1875N	136.5	A	OPERATIONS LINKED
3	COMMAND	C40 Ander' Peak	ALL DIVISIONS	163.1500N		172.8125N	136.5	A	BACK TO ICP
4	COMMAND							A	
5	COMMAND	C21 Junip. Serra	ALL DIVISIONS	166.3125		172.6750	136.5	A	
6	TACTICAL	NIFC T2		168.2000		168.2000		A	
7	TACTICAL	NIFC T3	WEST REPAIR	168.6000		168.6000		A	
8	TACTICAL	NIFC T1		168.0500		168.0500		A	
9	TACTICAL	VFIRE 26		154.3025	156.7	154.3025	156.7	A	
10	TACTICAL	SPEC A		151.1450	192.8	151.1450	192.8	A	
11	TACTICAL	GDF T1		151.2575	192.8	151.2575	192.8	A	
12	TACTICAL	VTAC 14		159.4725	156.7	159.4725	156.7	A	
13	A/G CMD	A/G CMD	ALL DIVISIONS	159.4500	192.8	159.4500	192.8	A	
14	A/G TAC	A/G TAC	ALL DIVISIONS	159.2700	192.8	159.2700	192.8	A	
15	MEDICAL	CALCORD	ALL DIVISIONS	156.0750	156.7	156.0750	156.7	A	MEDICAL COORDINATION
16	EMERGENCY	GUARD 21	ALL DIVISIONS	168.6250		168.6250	110.9	A	AIR GUARD 21
17									Note: The # behind the
18									Guard Channel is the
19									Date of last Clone.
20									

Prepared By: (Communications Unit)
 David Paschke Kevin Harper COML Phone 831-484-9674
 Incident Location
 5 MILES SOUTH OF CARMEL, GARRAPATA STATE PARK, MONTEREY CALIFORNIA

The convention calls for frequency lists to show four digits after the decimal place, followed by either an "N" or a "W", depending on whether the frequency is narrow or wide band. Mode refers to either "A" or "D" indicating analog or digital (e.g. Project 25) or "M" indicating mixed mode. All channels are shown as it programmed in a control station, mobile or portable radio. Repeater and base stations must be programmed with the Kx and Ix reversed.

Soberanes Incident Contact List

Incident Command		Logistics(cont.)	
Incident Commander	Van Arroyo	916-206-1828	Soberanes Communications Unit (Primary)
Deputy Incident Commander	Mike Sandwick	805-377-0498	Soberanes Communications Unit (Secondary/INCM)
Deputy IC - Molera	Dana D'Andrea	925-968-8999	COML
Liaison	Randy Graham	805-896-3159	Comm Unit Rana
Liaison	Jeff Jones	805-471-3310	Ground Support Toro
Liaison	Warner McGrew	805-886-1572	Transportation Toro
			Ground Support Rana
Safety Officer	Rick Bertram	805-471-8076	Molera
Safety Officer	Tom Zeulner	805-440-5252	Molera
Safety Officer (t)	Curt Schwarm	805-620-2561	Ordering
SOFR Rana	Mark Helm	831-659-0460	Ordering
			Ordering
			Supplies
Information	Helen Tarbet	805-550-1002	ICP Base Camp Manager
Public Information Officer			Food Unit Leader
Agency Representative	Gary Humphrey	916-952-5214	Security Manager
CAL OES	Corey Zander	916-712-6771	
CAL OES			Planning
Operations			Plans/Check in
Operations Section Chief	John Abell	661-289-2021	Resources/Situation
Operations Section Chief Trainee	Shaun Craig	209-352-6132	Resource Unit Leader
Operations Section Chief Trainee	Troy Nelsen	909-648-4690	Resources
Planning Ops	Bob Neumann	805-441-5469	Resources
Planning Ops Trainee	Jon Lucas	209-222-1549	Resources
			Situation
Aviation			Demobilization
Air Operations Branch Director	John Crotty	805-440-6186	FBAN/ARA
Air Operations Branch Director (t)	Brian Sexton	805-350-3717	IMET Toro
Air Support Group Supervisor	AI Driesbach	805-703-0649	IMET Toro
Air Support Group Supervisor	Curt Warner	805-478-1231	IMET Rana
Ranch Helibase		831-659-0220	Training Specialist
Miller Helibase		925-588-6678	
Hunter Liggett Helibase		720-306-7247	Finance
			Finance Section Chief (Primary)
Logistics			Comp/Claims
Logistics Section Chief	Tom Crakes	805-878-1369	Personnel Time
Logistics Section Chief (t)	Scott Gardner	323-855-0054	Equipment Time
LSC2-T	Mike Breeman	925-719-9867	
Supply Unit		661-304-3770	
Facilities Toro	Mike Farmer	805-868-0541	
Medical Tent Rana		831-659-0260	
Medical Unit Leader Toro	Devon Haggie	805-748-5152	
Medical Tent Molera		831-265-4171	

* Contact Toro Communications for any changes.

Updated 10/09/16

**Soberanes Fire
Human Resource Message
October 4, 2016**

THOUGHT FOR THE DAY

FIRE

Fatigue: Be aware of fatigue having a negative impact on your conduct and speech.

Integrity: Integrity and Honesty are vital on a fire. If you mess up, fess up, whatever you did can most likely be fixed if you report it as soon as you are aware of it.

Respect: Treat others as you would like to be treated.

Example: Set an example. Realize you influence others around you; therefore, always conduct yourself in a professional and competent manner, but still have fun!

~~~~~  
*"Leaders always choose the harder right rather than the easier wrong."  
~Orrin Woodward*  
~~~~~



Soberanes Fire Trainee/Trainer Data Form

Training Specialists: Robert Rivelle – 707.498.1761
Dennis Martin - 707.479.8421

- All Incident trainees, including those on Firefighting Modules, at your earliest opportunity complete this form and see the Training Specialist. Bring your taskbook and qualification card. One Training Specialist is covering Rana and Molera Camp and a drop box has been set up for Data Form drop off. These Camps will forward your Trainee Data Form to Toro ICP.
- You will meet with the Training Specialist and receive your training package as you go through DEMOB at Toro ICP, To close your training package, bring to the Training Specialist at Toro ICP your:
 - 1) A performance rating from your trainer. (ICS 225)
 - 2) Your task book that has as many entries as possible by your Trainer.

Trainee Data

Trainee Name: _____ ICS Trainee Position: _____

Request Number (O, C, E): _____ Agency Designator (Example: CA-ANF): _____

Cell # While on Incident: _____ Date Assigned: _____

Training Records Mailed To: (Fire Chief, Training Officer)

Name: _____ Title _____

Name of Agency/Unit: _____

Agency/Unit Address: _____

City: _____ State: _____ Zip Code: _____ Phone: _____

Trainee Prerequisites

1. Possesses valid Red Card or agency certification card? ___Yes ___No

2. Trainee has current position task book issued by home unit? ___Yes ___No

Trainer/Evaluator Data

Trainer / Evaluator Name: _____ ICS position on fire: _____

Home Unit: _____

City: _____ State: _____

Cell # While on Incident: _____

What do you need/want to accomplish on this incident:

10/04/2016

TENTATIVE RELEASE

SOBERANES US-CA-BEU-003422

CREWS

C-10220	0700	(HC2I)	CRW2IA PACIFIC OASIS 8A
C-10236	0730	(HC2I)	CRW2IA GE FORESTRY 8C

EQUIPMENT

E-10798	0700	(ENG4)	ENG4 UPF 24
---------	------	--------	-------------

OVERHEAD

O-11487	0700	(FOBS)	ALEXIOU, JOHN
O-11237	0700	(BCMG)	BURMANN, MIKE
O-11042	0700	(FEMT)	FAULDING, PHIL
O-11225	0700	(REAF)	GOODMAN, WILLIAM
O-11291	0700	(BCMG)	HOLTZ, MELVIT R
O-10995	0700	(ARCH)	WEAVER, ROBERT
O-11288	0730	(GISS)	EISTER, MATTHEW
O-11211	0730	(RCDM)	LAWHORN, ANDREW RENARD
O-11266	0730	(DIVS)	PRINS, TRENTON
O-11248	0730	(PTRC)	WEST, MARY
O-10994	0800	(ARCH)	BROWN, ANN
O-11286	0800	(FEMP)	DEPOLO, MATTHEW
O-11284	0800	(FEMP)	DOTSON, PATRICK
O-11280	0800	(FEMP)	GIACOMINI, TONY
O-11281	0800	(FEMP)	MARTIN, JUSTIN
O-11267	0800	(TNSP)	RIVELLE, ROBERT
O-11299	0800	(HEQB)	WEST, MICHAEL
O-11287	0800	(FEMP)	WOODS, DAVE
O-11156	0830	(ITSS)	DESHAZER, CHERYL A

10/04/2016

TENTATIVE RELEASE

SOBERANES US-CA-BEU-003422

O-11400	0900	(TFLD)	KNOX, JESSE
O-11511	1400	(RCDM)	BERNARDO, DAYSON
O-11245	1400	(FDUL)	HAGUE, ROBERT S
O-11293	1700	(BCMG)	BOBIC, MIKE
O-11443	1700	(SEC2)	KENT II, CARL
O-11253	1700	(RADO)	LASOTA, CASEY
O-11340	1700	(SOFR)	MCFEE, DAVID

10/05/2016

TENTATIVE RELEASE

SOBERANES US-CA-BEU-003422

CREWS

C-10218	0700	(HC2I)	CRW2IA GE FORESTRY 7C
C-10221	0730	(HC2I)	CRW2IA GE FORESTRY 8B
C-10219	0800	(HC2I)	CRW2IA BOISE CREW 3
C-10227	0830	(HC1)	CRW1 BEAR DIVIDE
C-10224	0900	(HC2I)	CRW2IA ASI ARDEN 6A

EQUIPMENT

E-10772	0700	(ES3)	ENG3 S/T 4104C
E-10602	0730	(PU)	PICKUP - T1 - ROBERT THOMASON

OVERHEAD

O-11315	0700	(RADO)	DAVIS, JEFF
O-10736	0700	(DECK)	HADDAD, COREY
O-11296	0700	(AREP)	HARRIS, CHAD
O-11032	0700	(SEC2)	TURATI, BENJAMIN A
O-11455	0700	(SEC2)	TURKALY, WILLIAM
O-10577	0730	(RESL)	BARNEY, WAYNE
O-11224	0730	(READ)	KEELER, KEVIN
O-11101	0730	(RCDM)	KRUGER, BRIAN
O-11327	0730	(INCM)	MILLER, SHALEE
O-11298	0730	(PTRC)	SCHLUMPF, ERIC

Revised on
09/04/2016

E 68 TO SALINAS

W 68 TO
MONTEREY &
MOLERA

MONTEREY
SALINAS HWY

HWY 68
PORTOLA DR.

TO W 68
TO E 68

HEAVY EQUIPMENT
PARKING
GROUND
SUPPORT
IA
STAGING
(Fuel, Transportation,
Weed Wash)

VENDOR
CAMPING

PIO

PIO

LAUNDRY
0600-2200

SECURITY

FOOT
PATH

CCC CAMP

PARKING

PARKING

1 2 3

ICP

OVERHEAD
PARKING

BRIEFING

ORDERING

SUPPLY
0600-2200

Additional
Day Sleeping
Request Contact
Facilities

KITCHEN
0530-0930
1730-2130

4

MEDICAL

LUNCH

SHOWERS
0500-1200
1400-2300

OVERHEAD SLEEPING

PARKING

TORO CAMP

NOT TO SCALE



CREW/BUS
ENGINE PARKING

CREW
PARKING

CREW SLEEPING

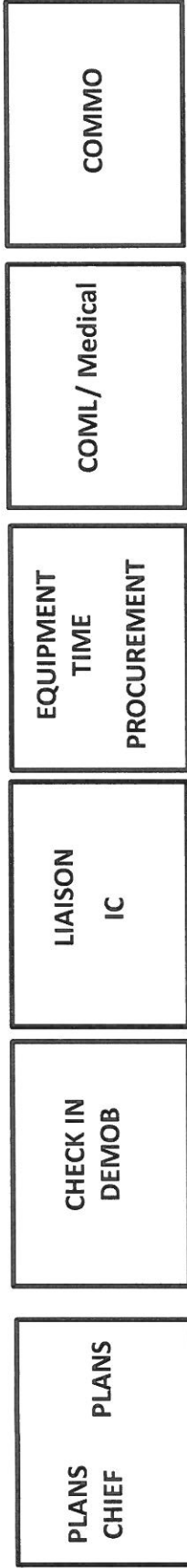
1 - READS/ARCHY /FIRE
SUPPR./REPAIR
2 - USFS
3 - FOOD UNIT LEADER
4 - MED L

TO HELISPOT

ICP DETAIL SEE NEXT PAGE

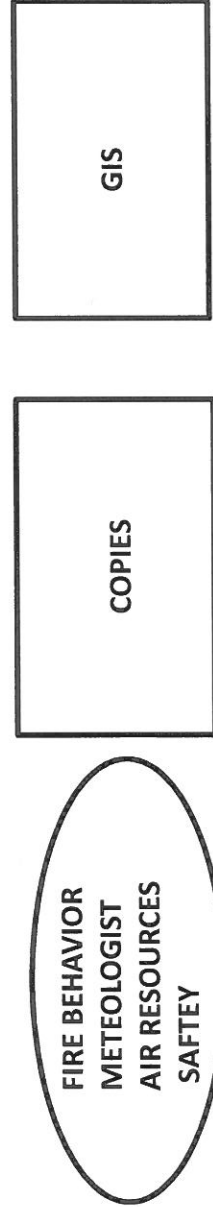
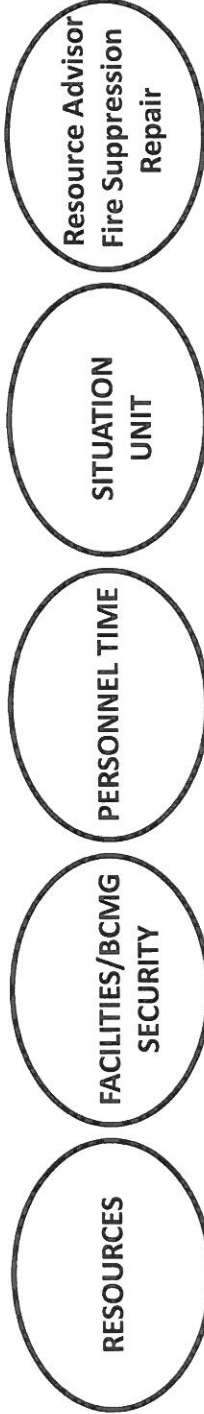
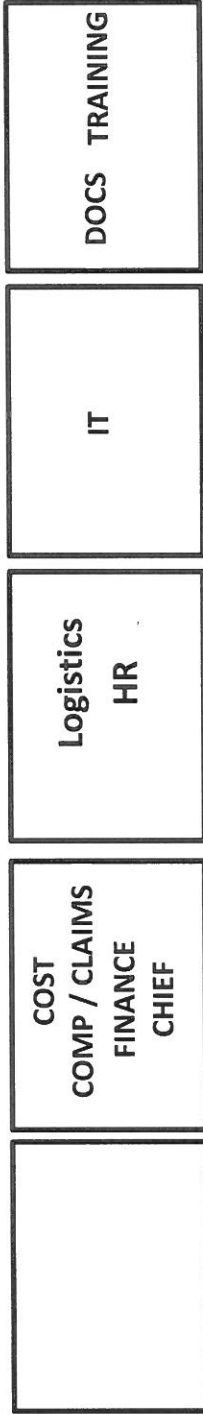
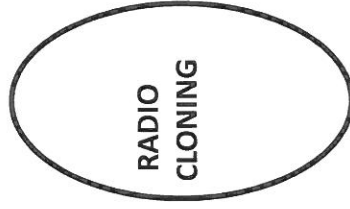


TORO PARK ICP MAP

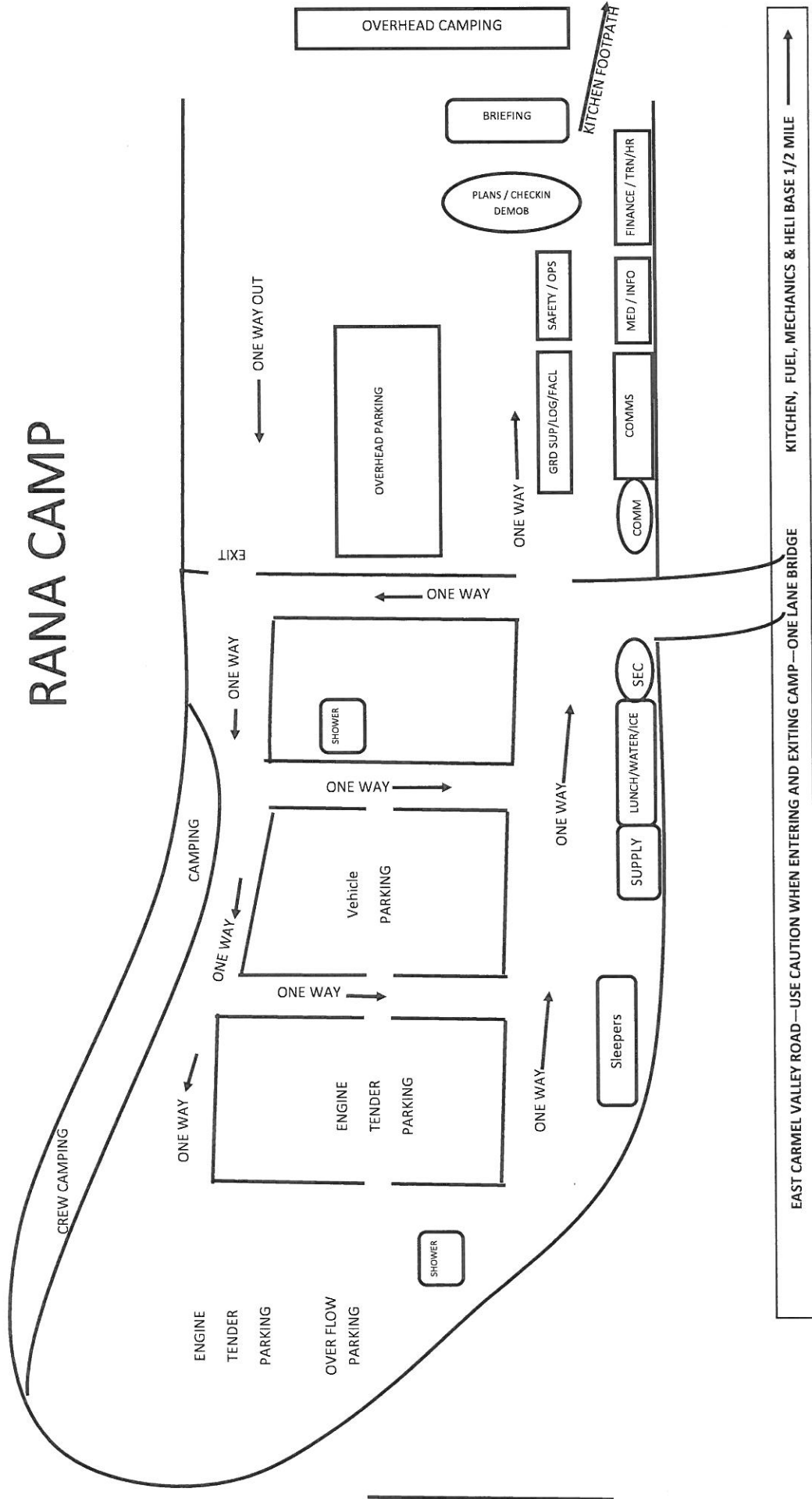


MAIN STREET

NOT TO SCALE



RANA CAMP



UNIT LOG	1. Incident Name Soberanes Fire	2. Date Prepared	3. Time Prepared
4. Unit Name/Designators	5. Unit Leader (Name and Position)		6. Operational Period
7. Personnel Roster Assigned			
Name	ICS Position	Home Base	
8. Activity Log			
Time	Major Events		
9. Prepared by (Name and Position)			