

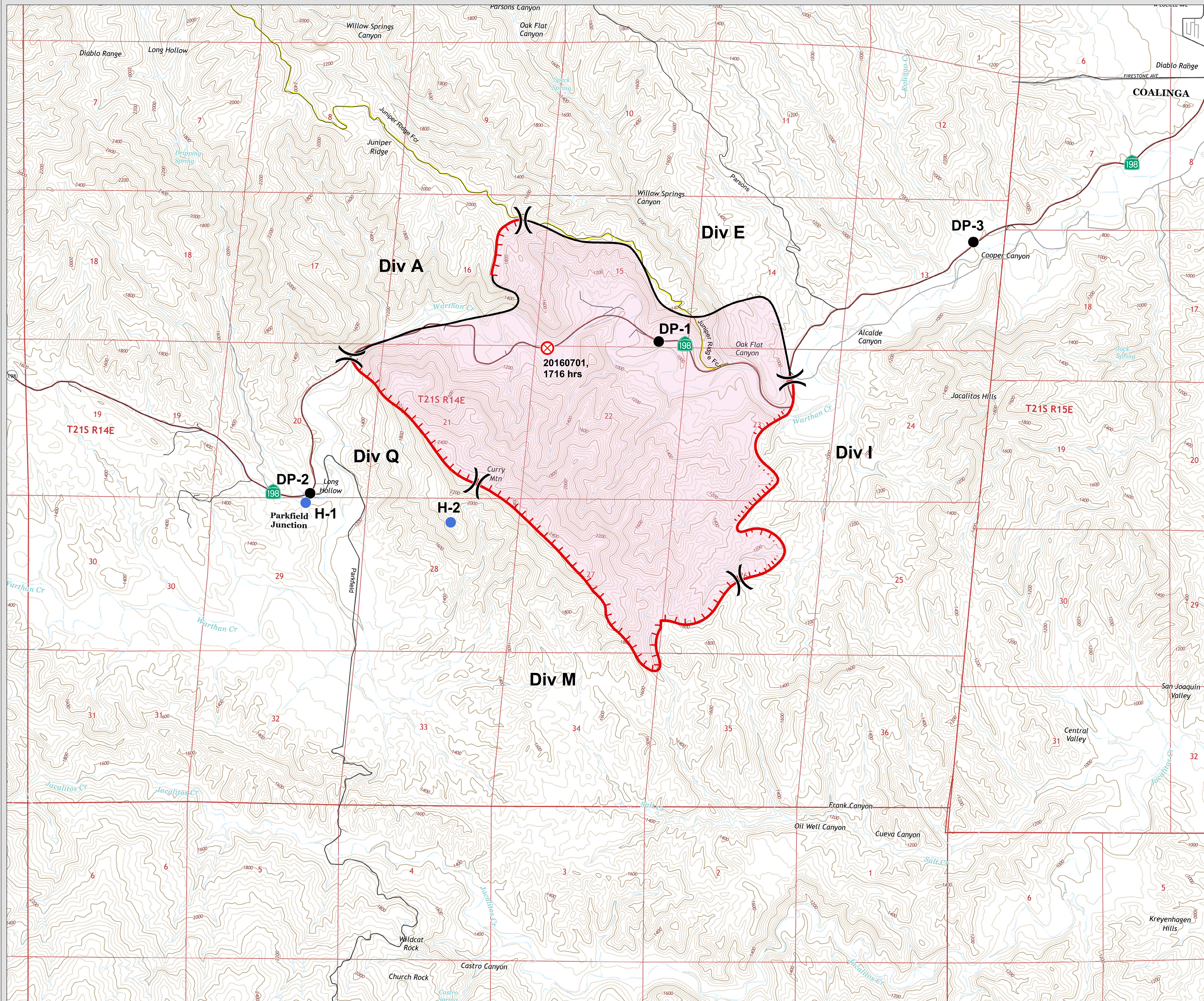


CURRY INCIDENT CA-FKU-009100

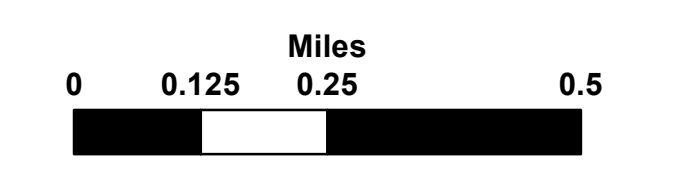
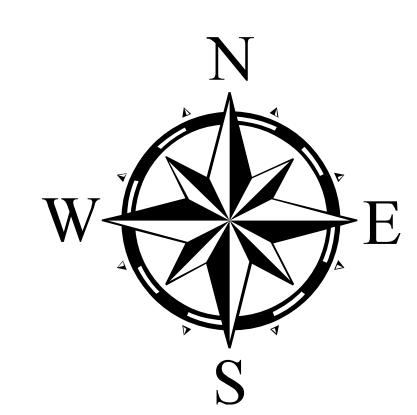
OPERATIONS MAP

7/3/2016

Fire Perimeter as of
7/2/2016 1938 hours



- Division
- Uncontrolled Fire Edge
- Completed Line
- Drop Point
- Fire Origin
- Helispot



Datum: NAD 83 1:12,000

DISCLAIMER: The displayed incident data is approximate and should only be used for informational purposes. The information contained in supporting base layers was generated from GIS data maintained by different sources and agencies and is not necessarily accurate to mapping, surveying, or engineering.

Team 2 GIS
July 02 2016
2225 hrs