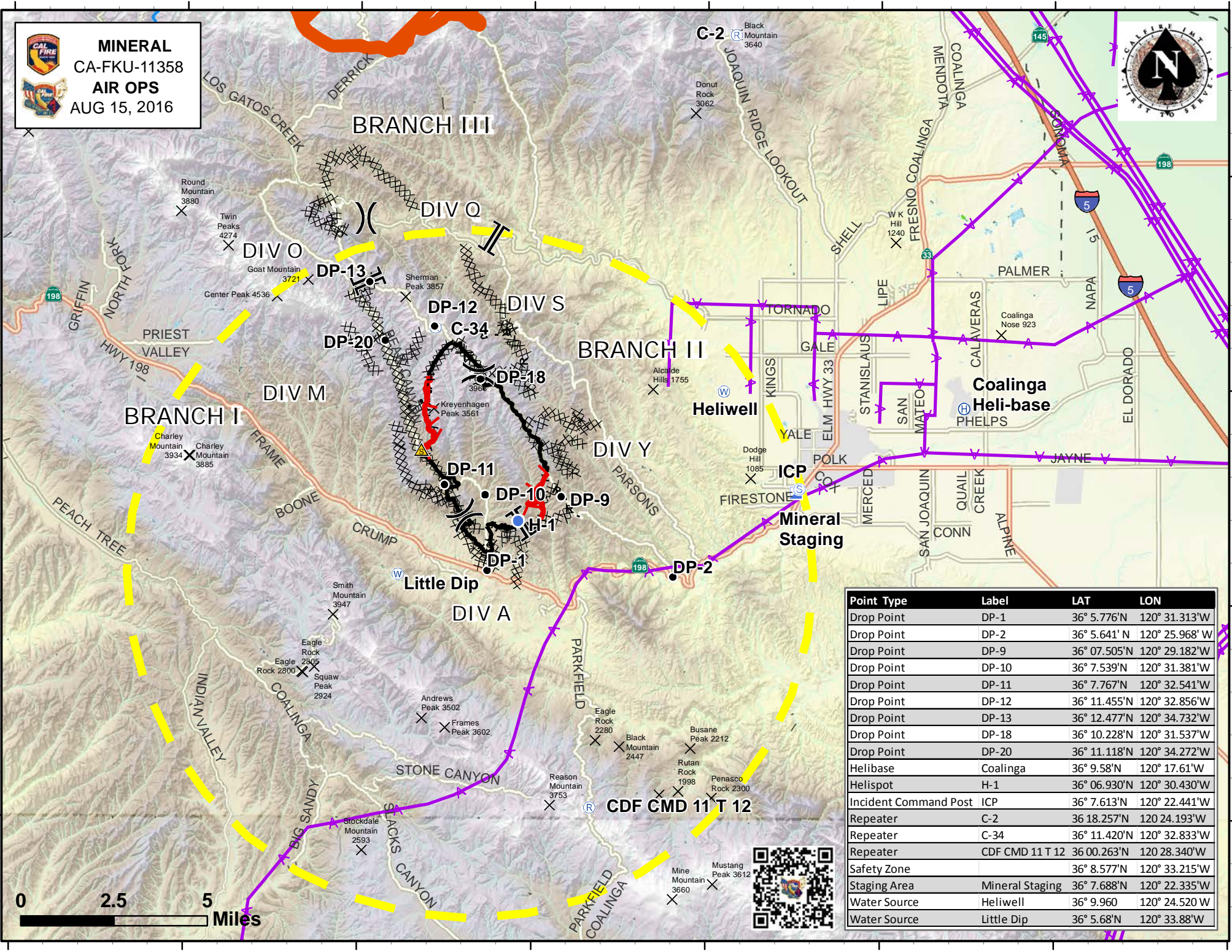




MINERAL
CA-FKU-11358
AIR OPS
AUG 15, 2016



Point Type	Label	LAT	LOX
Drop Point	DP-1	36° 5.776'N	120° 31.313'W
Drop Point	DP-2	36° 5.641' N	120° 25.968' W
Drop Point	DP-9	36° 07.505'N	120° 29.182'W
Drop Point	DP-10	36° 7.539'N	120° 31.381'W
Drop Point	DP-11	36° 7.767'N	120° 32.541'W
Drop Point	DP-12	36° 11.455'N	120° 32.856'W
Drop Point	DP-13	36° 12.477'N	120° 34.732'W
Drop Point	DP-18	36° 10.228'N	120° 31.537'W
Drop Point	DP-20	36° 11.118'N	120° 34.272'W
Helibase	Coalinga	36° 9.58'N	120° 17.61'W
Helispot	H-1	36° 06.930'N	120° 30.430'W
Incident Command Post	ICP	36° 7.613'N	120° 22.441'W
Repeater	C-2	36 18.257'N	120 24.193'W
Repeater	C-34	36° 11.420'N	120° 32.833'W
Repeater	CDF CMD 11 T 12	36 00.263'N	120 28.340'W
Safety Zone		36° 8.577'N	120° 33.215'W
Staging Area	Mineral Staging	36° 7.688'N	120° 22.335'W
Water Source	Heliwell	36° 9.960	120° 24.520 W
Water Source	Little Dip	36° 5.68'N	120° 33.88'W

