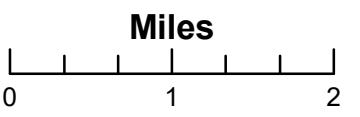
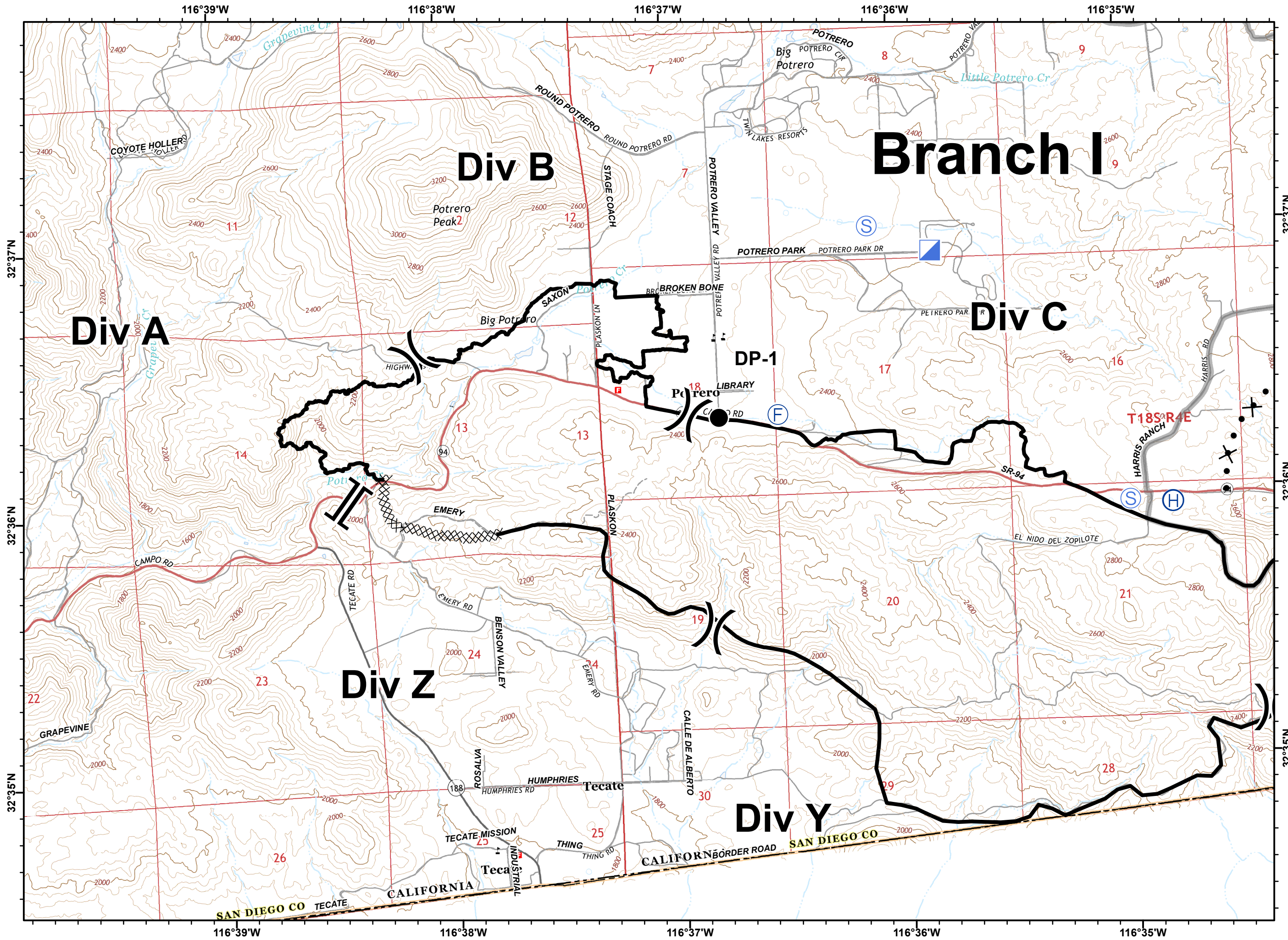


Legend

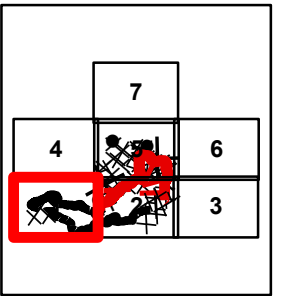
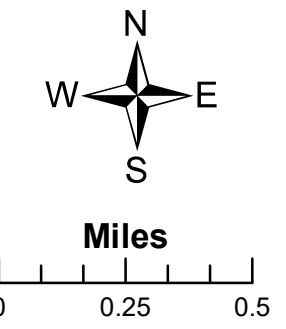
- () Division
- [] Branch
- Drop Point
- (F) Fire Station
- (H) Helibase
- ▣ Incident Command Post
- Spot Fire
- (S) Staging Area
- (W) Water Source
- ▬ Uncontrolled Fire Edge
- ▨ Completed Dozer Line
- ▬ Completed Line
- H - H Hand Line
- ⊗ Proposed Dozer Line
- ▭ Division Boundaries
- ▨ Lake Morena Fuelbreak

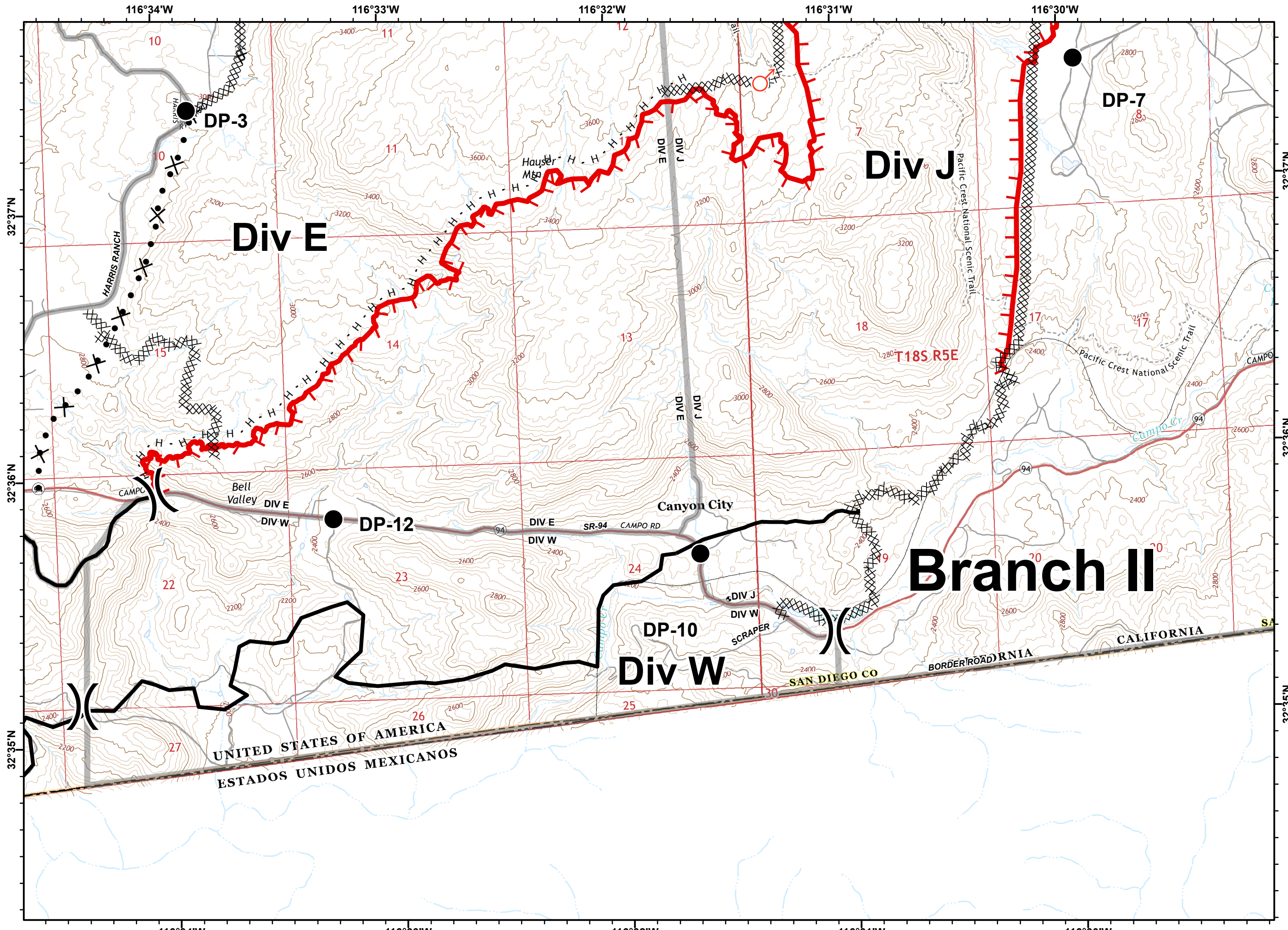




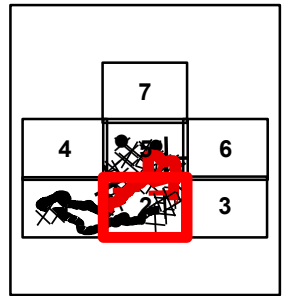
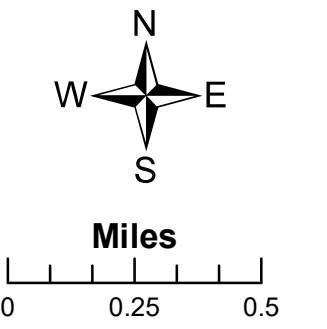
Legend

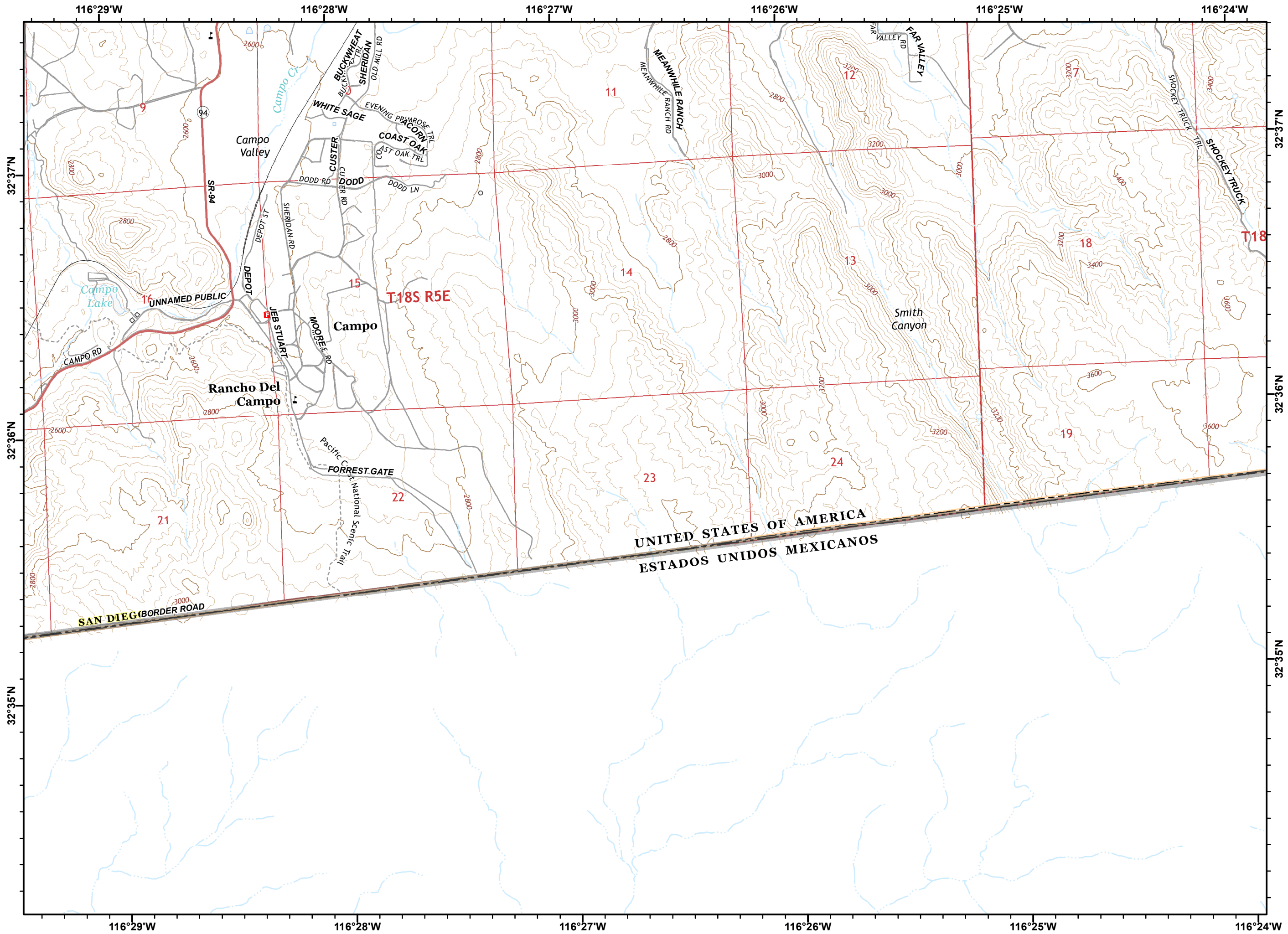
- Division
- Branch
- Drop Point
- Fire Station
- Helibase
- Incident Command Post
- Spot Fire
- Staging Area
- Water Source
- Uncontrolled Fire Edge
- Completed Dozer Line
- Completed Line
- H - H Hand Line
- Proposed Dozer Line
- Division Boundaries
- Lake Morena Fuelbreak





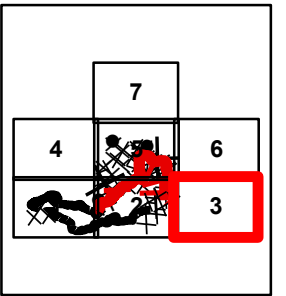
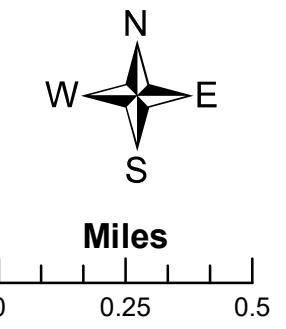
- Legend**
- () Division
 - [] Branch
 - Drop Point
 - (F) Fire Station
 - (H) Helibase
 - (ICP) Incident Command Post
 - (SF) Spot Fire
 - (S) Staging Area
 - (W) Water Source
 - Uncontrolled Fire Edge
 - XXXXX Completed Dozer Line
 - Completed Line
 - H - H Hand Line
 - X ● Proposed Dozer Line
 - ▭ Division Boundaries
 - ▨ Lake Morena Fuelbreak





Legend

- Division
- Branch
- Drop Point
- Fire Station
- Helibase
- Incident Command Post
- Spot Fire
- Staging Area
- Water Source
- Uncontrolled Fire Edge
- Completed Dozer Line
- Completed Line
- H - H Hand Line
- Proposed Dozer Line
- Division Boundaries
- Lake Morena Fuelbreak



116°39'W

116°38'W

116°37'W

116°36'W

116°35'W

32°41'N

32°40'N

32°39'N





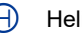

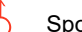
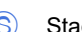




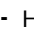



32°38'N

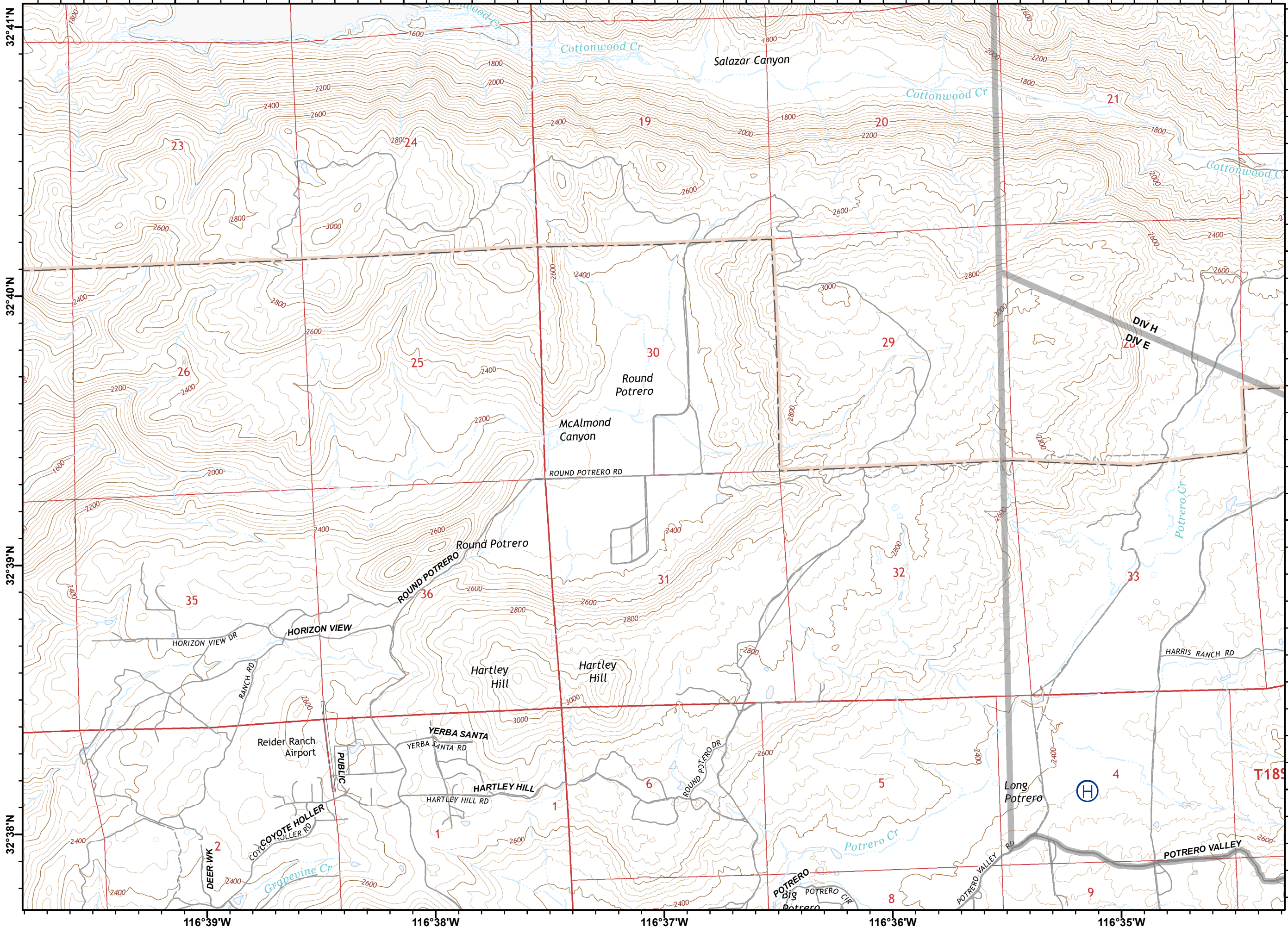
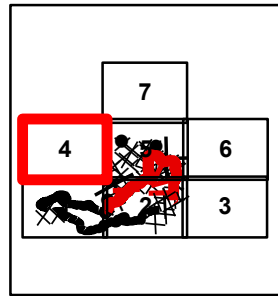
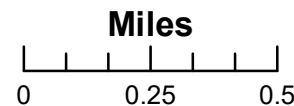
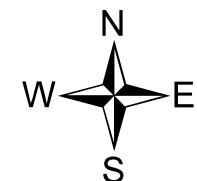
32°40'N

32°39'N

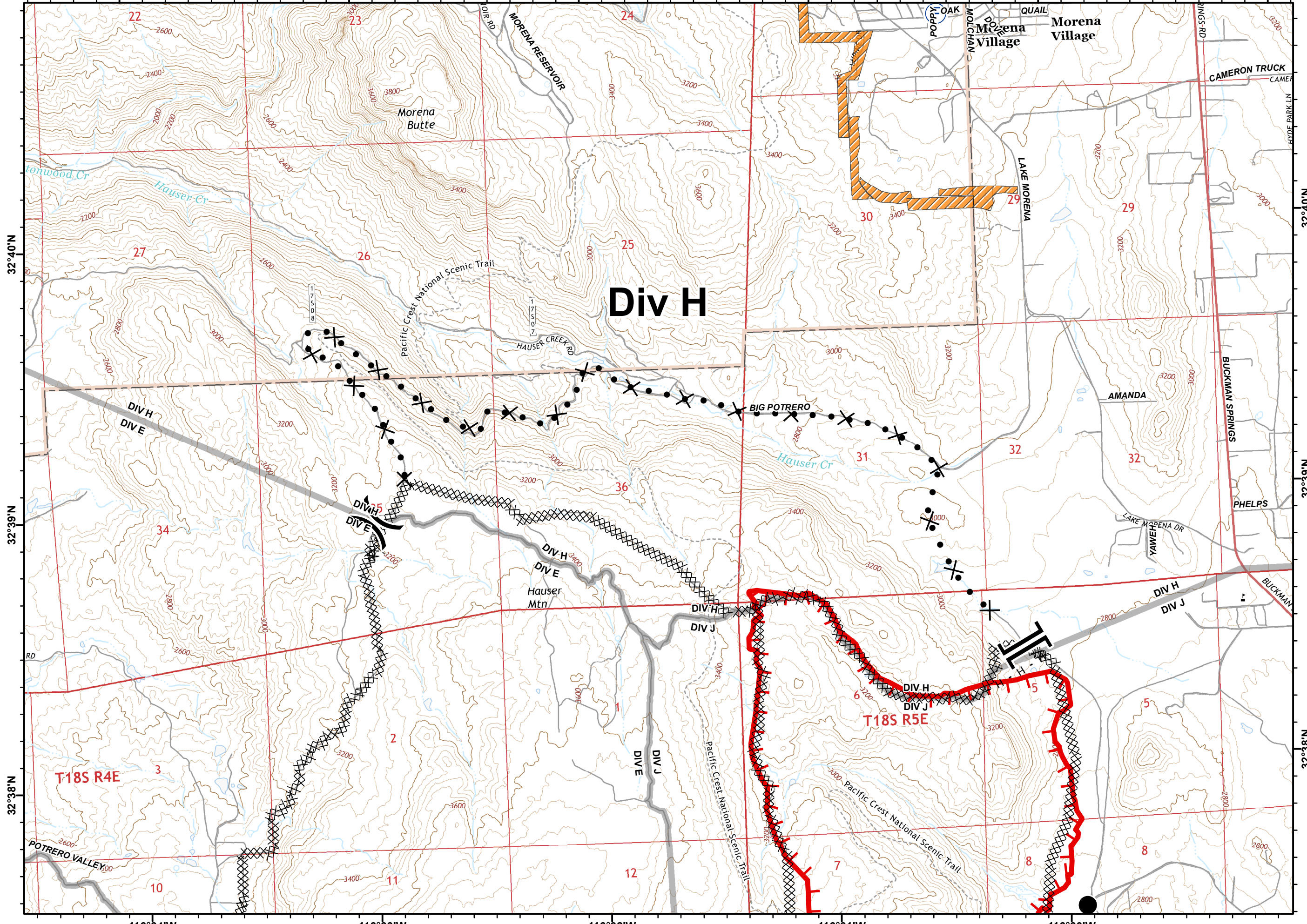
32°38'N

Legend

-  Division
-  Branch
-  Drop Point
-  Fire Station
-  Helibase
-  Incident Command Post
-  Spot Fire
-  Staging Area
-  Water Source
-  Uncontrolled Fire Edge
-  Completed Dozer Line
-  Completed Line
-  H - H Hand Line
-  Proposed Dozer Line
-  Division Boundaries
-  Lake Morena Fuelbreak

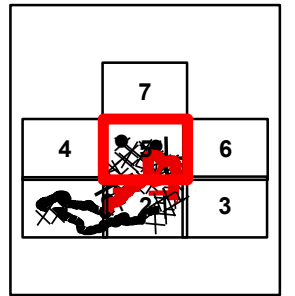
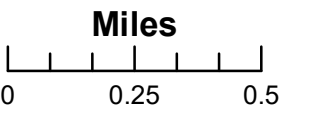


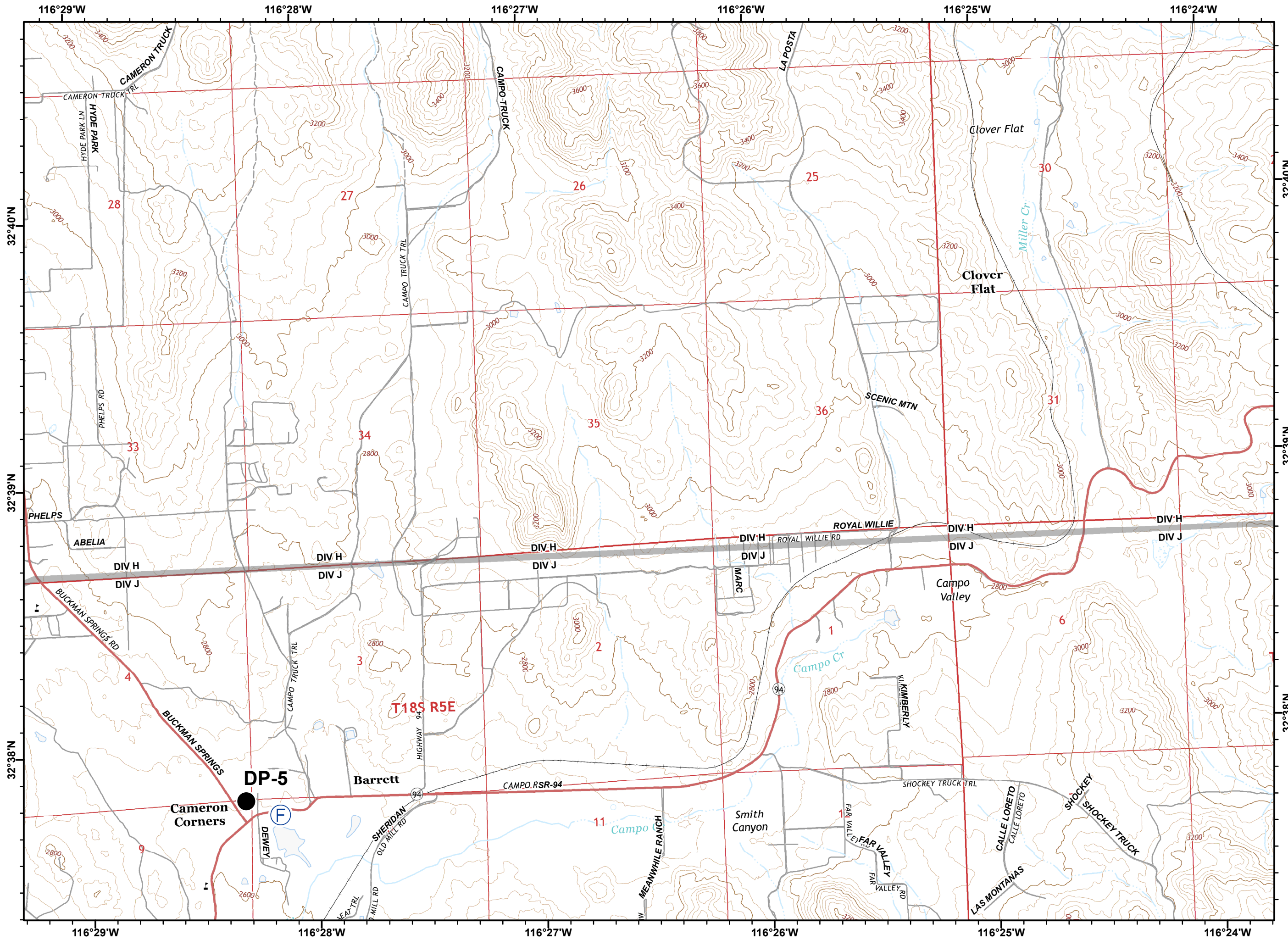
116°34'W 116°33'W 116°32'W 116°31'W 116°30'W 116°29'W



Legend

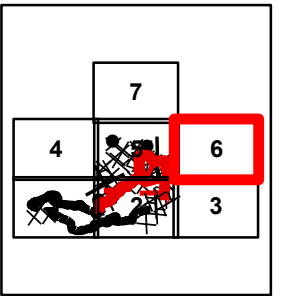
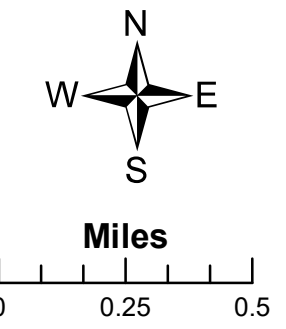
- Division
- Branch
- Drop Point
- Fire Station
- Helibase
- Incident Command Post
- Spot Fire
- Staging Area
- Water Source
- Uncontrolled Fire Edge
- Completed Dozer Line
- Completed Line
- H - H Hand Line
- Proposed Dozer Line
- Division Boundaries
- Lake Morena Fuelbreak

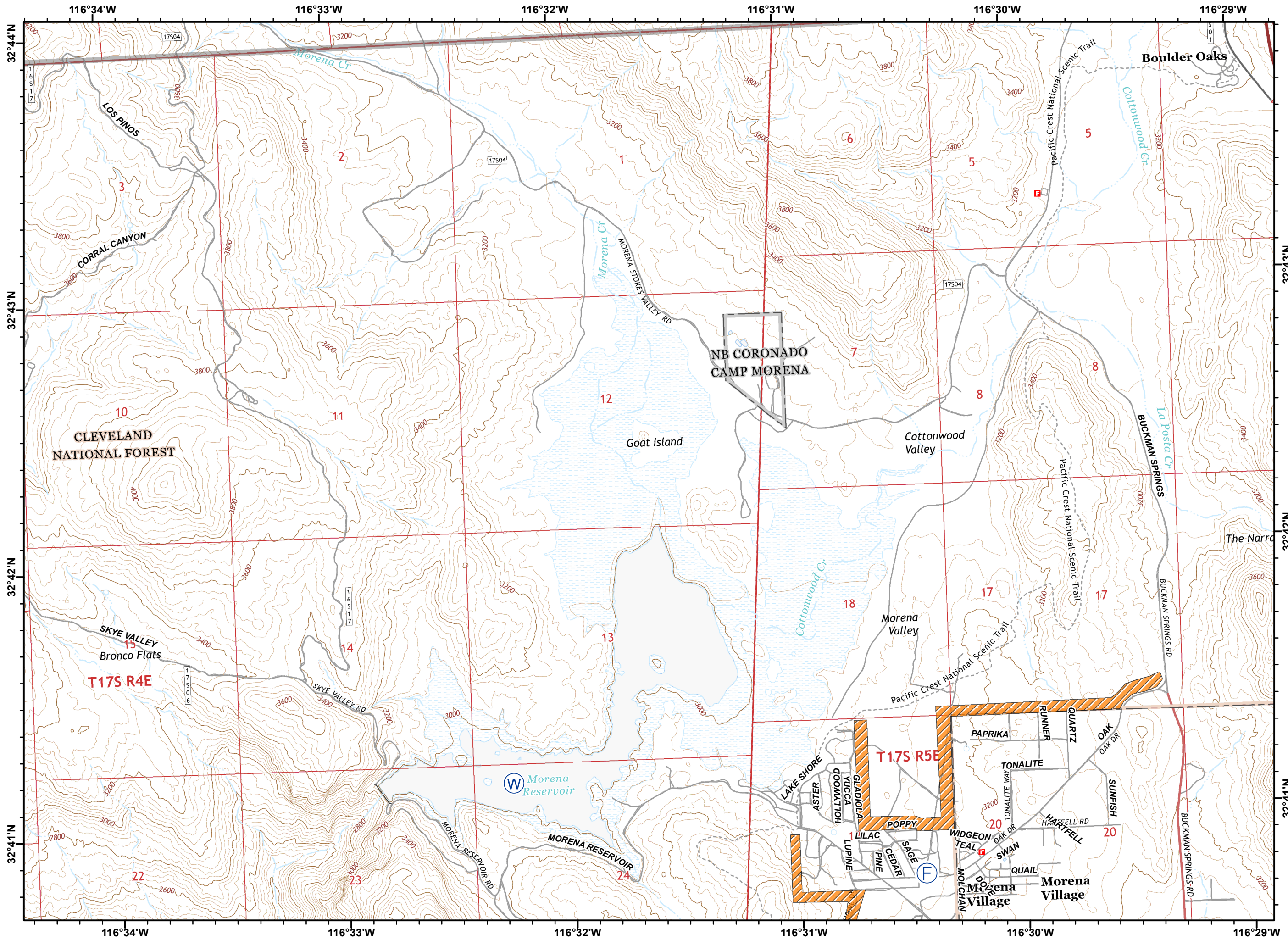




Legend

- Division
- Branch
- Drop Point
- Fire Station
- Helibase
- Incident Command Post
- Spot Fire
- Staging Area
- Water Source
- Uncontrolled Fire Edge
- Completed Dozer Line
- Completed Line
- H - H Hand Line
- Proposed Dozer Line
- Division Boundaries
- Lake Morena Fuelbreak





- Legend**
- Division
 - Branch
 - Drop Point
 - Fire Station
 - Helibase
 - Incident Command Post
 - Spot Fire
 - Staging Area
 - Water Source
 - Uncontrolled Fire Edge
 - Completed Dozer Line
 - Completed Line
 - H - H Hand Line
 - Proposed Dozer Line
 - Division Boundaries
 - Lake Morena Fuelbreak

