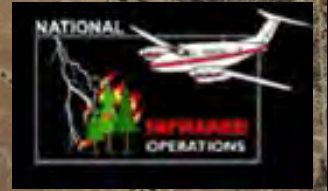
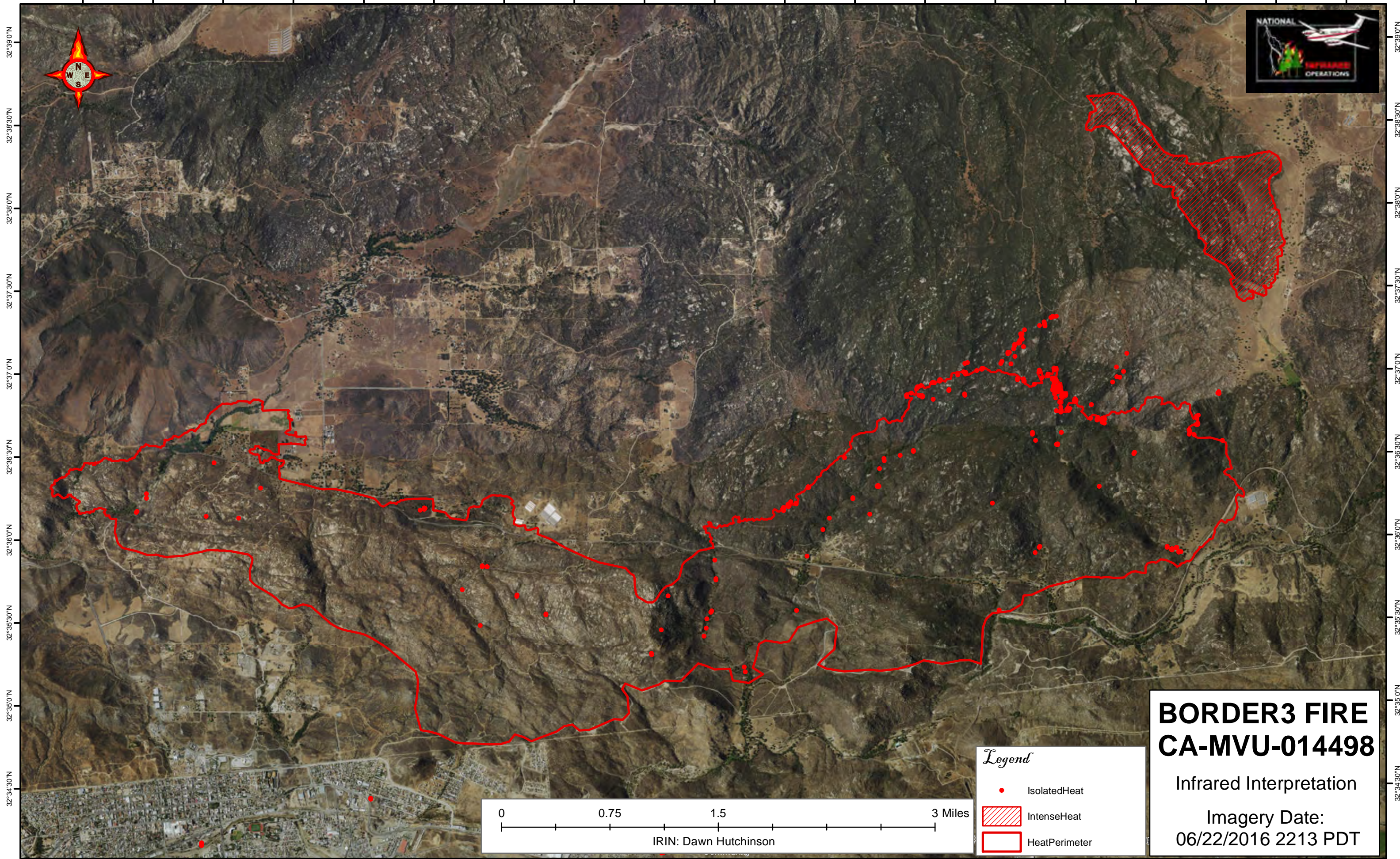
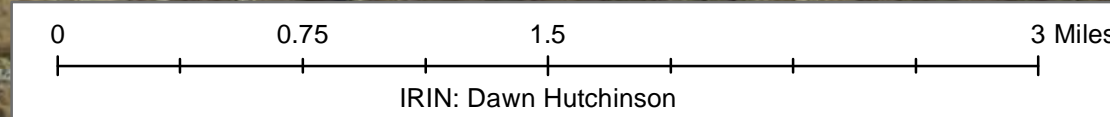


116°38'30"W 116°38'0"W 116°37'30"W 116°37'0"W 116°36'30"W 116°36'0"W 116°35'30"W 116°35'0"W 116°34'30"W 116°34'0"W 116°33'30"W 116°33'0"W 116°32'30"W 116°32'0"W 116°31'30"W 116°31'0"W 116°30'30"W 116°30'0"W 116°29'30"W



32°39'0"N  
32°38'30"N  
32°38'0"N  
32°37'30"N  
32°37'0"N  
32°36'30"N  
32°36'0"N  
32°35'30"N  
32°35'0"N  
32°34'30"N

32°39'0"N  
32°38'30"N  
32°38'0"N  
32°37'30"N  
32°37'0"N  
32°36'30"N  
32°36'0"N  
32°35'30"N  
32°35'0"N  
32°34'30"N



IRIN: Dawn Hutchinson

*Legend*

- IsolatedHeat
- IntenseHeat
- HeatPerimeter

# BORDER3 FIRE CA-MVU-014498

Infrared Interpretation

Imagery Date:  
06/22/2016 2213 PDT

116°38'30"W 116°38'0"W 116°37'30"W 116°37'0"W 116°36'30"W 116°36'0"W 116°35'30"W 116°35'0"W 116°34'30"W 116°34'0"W 116°33'30"W 116°33'0"W 116°32'30"W 116°32'0"W 116°31'30"W 116°31'0"W 116°30'30"W 116°30'0"W 116°29'30"W