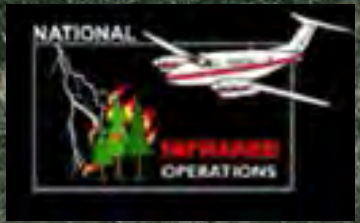
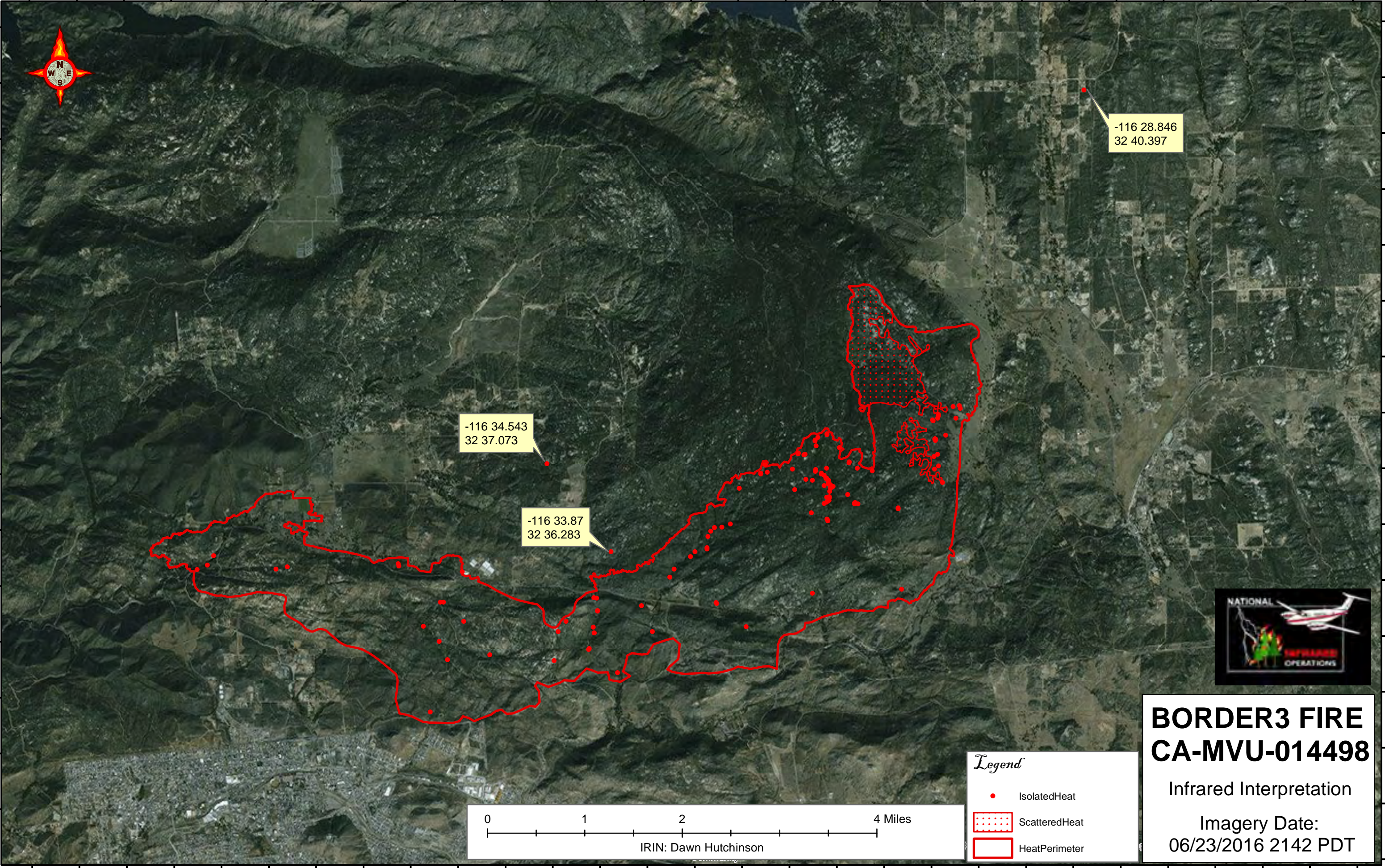


116°40'0"W 116°39'30"W 116°39'0"W 116°38'30"W 116°38'0"W 116°37'30"W 116°37'0"W 116°36'30"W 116°36'0"W 116°35'30"W 116°35'0"W 116°34'30"W 116°34'0"W 116°33'30"W 116°33'0"W 116°32'30"W 116°32'0"W 116°31'30"W 116°31'0"W 116°30'30"W 116°30'0"W 116°29'30"W 116°29'0"W 116°28'30"W 116°28'0"W 116°27'30"W 116°27'0"W 116°26'30"W 116°26'0"W

32°41'0"N
32°40'30"N
32°40'0"N
32°39'30"N
32°39'0"N
32°38'30"N
32°38'0"N
32°37'30"N
32°37'0"N
32°36'30"N
32°36'0"N
32°35'30"N
32°35'0"N
32°34'30"N
32°34'0"N

32°41'0"N
32°40'30"N
32°40'0"N
32°39'30"N
32°39'0"N
32°38'30"N
32°38'0"N
32°37'30"N
32°37'0"N
32°36'30"N
32°36'0"N
32°35'30"N
32°35'0"N
32°34'30"N
32°34'0"N



BORDER3 FIRE CA-MVU-014498

Infrared Interpretation

Imagery Date:
06/23/2016 2142 PDT

Legend

- IsolatedHeat
- ScatteredHeat
- HeatPerimeter

0 1 2 4 Miles

IRIN: Dawn Hutchinson

116°40'0"W 116°39'30"W 116°39'0"W 116°38'30"W 116°38'0"W 116°37'30"W 116°37'0"W 116°36'30"W 116°36'0"W 116°35'30"W 116°35'0"W 116°34'30"W 116°34'0"W 116°33'30"W 116°33'0"W 116°32'30"W 116°32'0"W 116°31'30"W 116°31'0"W 116°30'30"W 116°30'0"W 116°29'30"W 116°29'0"W 116°28'30"W 116°28'0"W 116°27'30"W 116°27'0"W 116°26'30"W 116°26'0"W