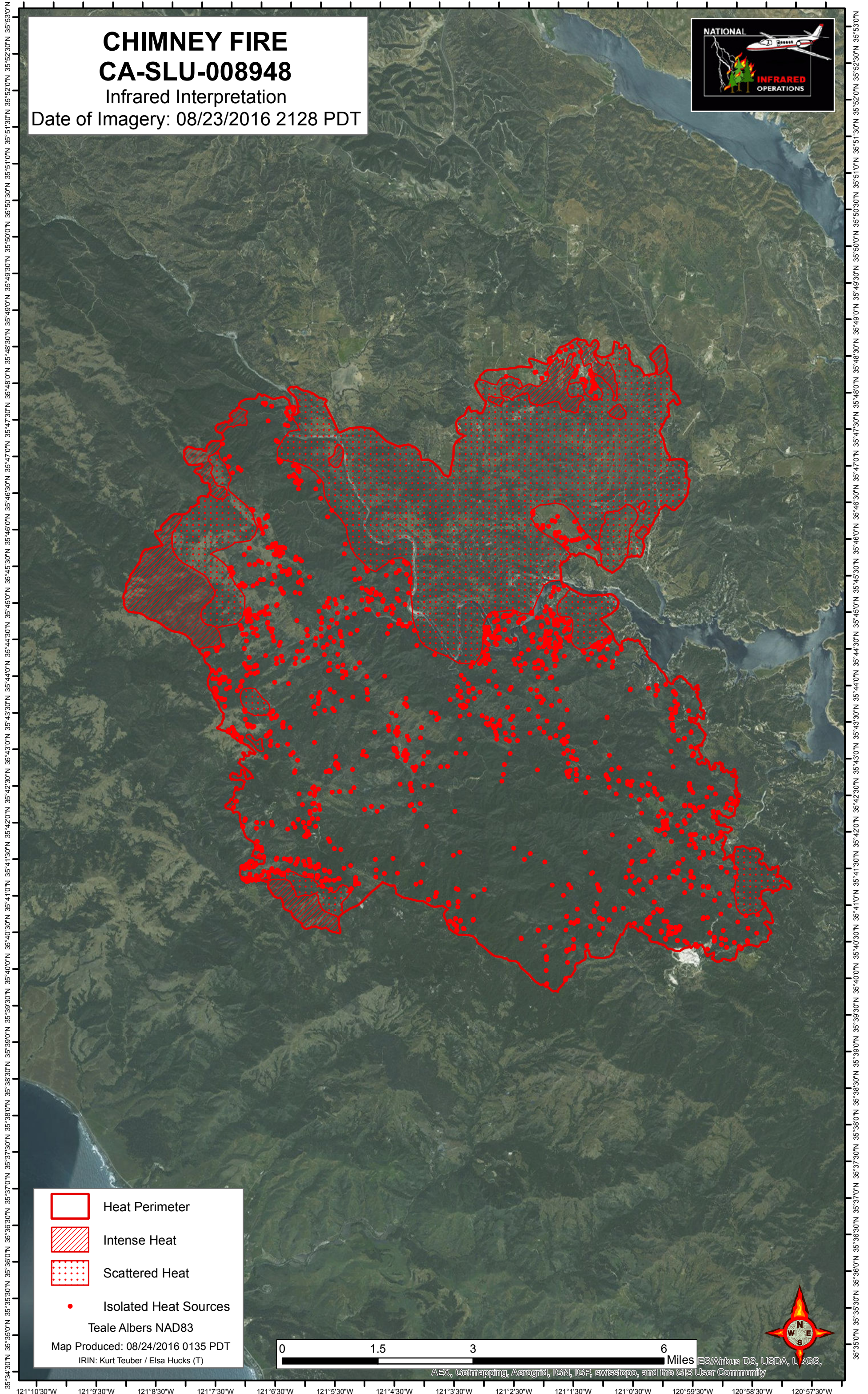






121°10'30"W 121°9'30"W 121°8'30"W 121°7'30"W 121°6'30"W 121°5'30"W 121°4'30"W 121°3'30"W 121°2'30"W 121°1'30"W 121°0'30"W 120°59'30"W 120°58'30"W 120°57'30"W

CHIMNEY FIRE CA-SLU-008948

Infrared Interpretation

Date of Imagery: 08/23/2016 2128 PDT

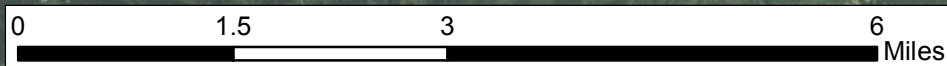


-  Heat Perimeter
-  Intense Heat
-  Scattered Heat
-  Isolated Heat Sources

Teale Albers NAD83

Map Produced: 08/24/2016 0135 PDT

IRIN: Kurt Teuber / Elsa Hucks (T)



Miles ES/Airbus DS, USDA, USGS, AEX, Getmapping, Aerogrid, IGN, IGP, swisstopo, and the GIS User Community

121°10'30"W 121°9'30"W 121°8'30"W 121°7'30"W 121°6'30"W 121°5'30"W 121°4'30"W 121°3'30"W 121°2'30"W 121°1'30"W 121°0'30"W 120°59'30"W 120°58'30"W 120°57'30"W