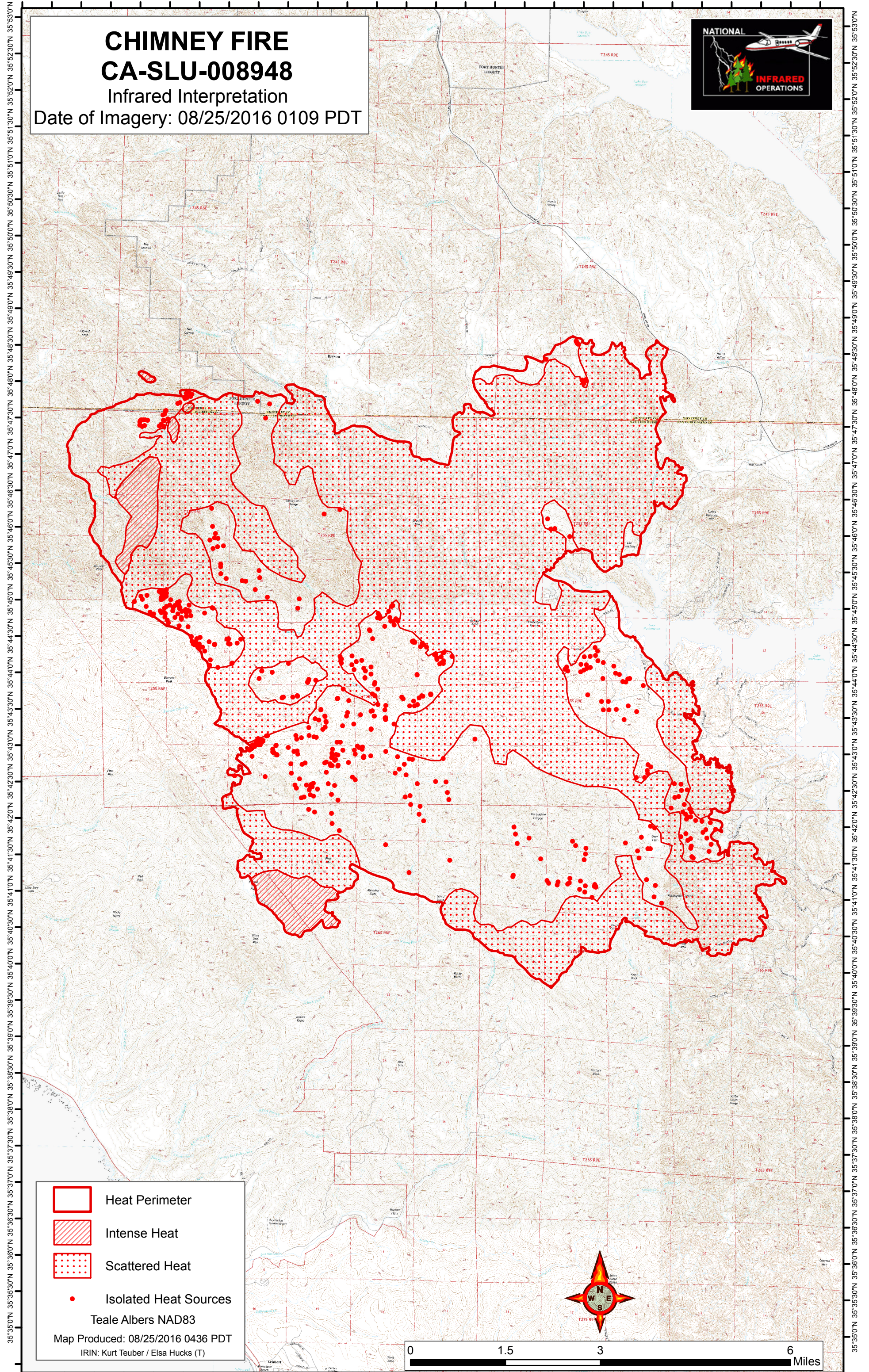






121°10'30"W 121°9'30"W 121°8'30"W 121°7'30"W 121°6'30"W 121°5'30"W 121°4'30"W 121°3'30"W 121°2'30"W 121°1'30"W 121°0'30"W 120°59'30"W 120°58'30"W 120°57'30"W

# CHIMNEY FIRE CA-SLU-008948

## Infrared Interpretation

Date of Imagery: 08/25/2016 0109 PDT

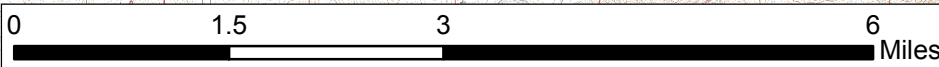


-  Heat Perimeter
-  Intense Heat
-  Scattered Heat
-  Isolated Heat Sources

Teale Albers NAD83

Map Produced: 08/25/2016 0436 PDT

IRIN: Kurt Teuber / Elsa Hucks (T)



121°10'30"W 121°9'30"W 121°8'30"W 121°7'30"W 121°6'30"W 121°5'30"W 121°4'30"W 121°3'30"W 121°2'30"W 121°1'30"W 121°0'30"W 120°59'30"W 120°58'30"W 120°57'30"W

35°35'00"N 35°34'00"N 35°33'00"N 35°32'00"N 35°31'00"N 35°30'00"N 35°29'00"N 35°28'00"N 35°27'00"N 35°26'00"N 35°25'00"N 35°24'00"N 35°23'00"N 35°22'00"N 35°21'00"N 35°20'00"N 35°19'00"N 35°18'00"N 35°17'00"N 35°16'00"N 35°15'00"N 35°14'00"N 35°13'00"N 35°12'00"N 35°11'00"N 35°10'00"N 35°09'00"N 35°08'00"N 35°07'00"N 35°06'00"N 35°05'00"N 35°04'00"N 35°03'00"N 35°02'00"N 35°01'00"N 35°00'00"N

35°35'00"N 35°34'00"N 35°33'00"N 35°32'00"N 35°31'00"N 35°30'00"N 35°29'00"N 35°28'00"N 35°27'00"N 35°26'00"N 35°25'00"N 35°24'00"N 35°23'00"N 35°22'00"N 35°21'00"N 35°20'00"N 35°19'00"N 35°18'00"N 35°17'00"N 35°16'00"N 35°15'00"N 35°14'00"N 35°13'00"N 35°12'00"N 35°11'00"N 35°10'00"N 35°09'00"N 35°08'00"N 35°07'00"N 35°06'00"N 35°05'00"N 35°04'00"N 35°03'00"N 35°02'00"N 35°01'00"N 35°00'00"N